

Port of Barcelona traffic statistics

Accumulated data May 2026

Statistics Service

Index

Traffic indicators

Total traffic	3
Main indicators	4
Breakdown of total traffic	5
Breakdown of traffic in transit	6
Monthly evolution of traffic	7

Container traffic

TEU evolution	8
Container traffic (TEU)	9

Passenger traffic

Passenger traffic	10
Passenger classification	11

Automobile traffic

Automobile traffic	12
--------------------	----

Short Sea Shipping traffic (SSS)

SSS Goods classification	13
SSS General cargo and Motorways of the sea (MoS)	14
SSS Ranking countries	15

Vessel traffic

Vessel traffic	16
----------------	----

Goods traffic

Mode of packaging and navigation	17
Goods by classification 4.3.7.	18
Goods ranking	19
Containerized goods by classification 4.3.7.	20

Maritime traffic by origin/destination

Geographical areas. Tonnes	21
Geographical areas. Full TEU non transit	22
Ranqing countries. Full TEU non transit	23

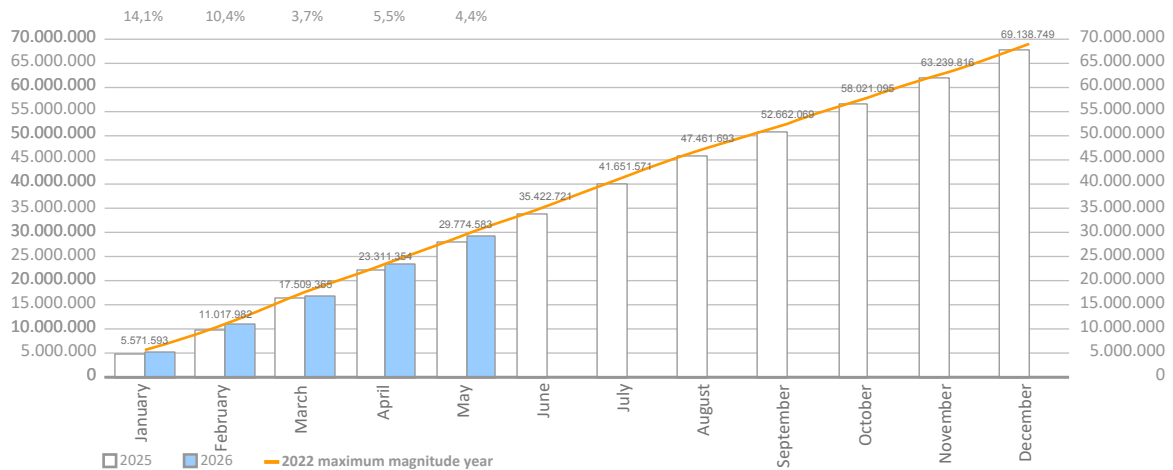
Railway traffic

Evolution of railway traffic (TEU and automobile)	24
Evolution of railway traffic (Solid and liquid bulk)	25
Railway gauge traffic	25

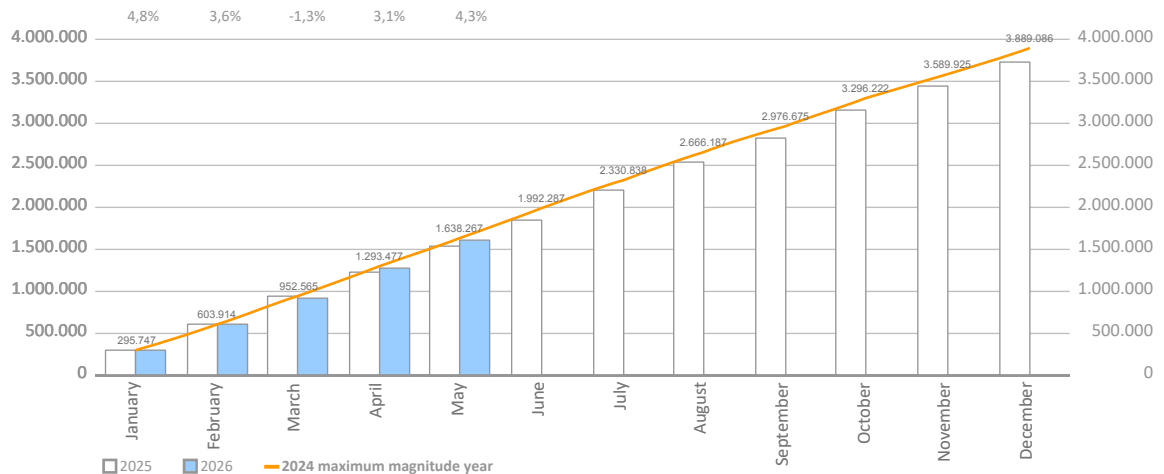
TRAFFIC INDICATORS

Total traffic	Monthly accumulated				% 26-25 accum. April	% 26-25 accum. March	Total traffic 2025
	2025	2026	Diff. 26-25	%			
O/D	18.043.387	18.014.875	-28.512	-0,2%	0,7%	-1,2%	43.823.696
Transit	10.039.427	11.298.793	1.259.366	12,5%	14,1%	12,5%	23.872.442
Total throughput (tonnes)	28.082.814	29.313.668	1.230.854	4,4%	5,5%	3,7%	67.696.137
Supplies	679.414	714.949	35.535	5,2%	0,0%	-4,4%	1.740.656
Fishing	765	496	-269	-35,1%	-23,6%	-10,2%	1.382
TOTAL TRAFFIC (tonnes)	28.762.993	30.029.114	1.266.121	4,4%	5,3%	3,5%	69.438.175
TEU	1.545.295	1.611.488	66.193	4,3%	3,1%	-1,3%	3.729.063
UTI	178.228	181.905	3.677	2,1%	2,9%	1,7%	430.408
Automobiles (units)	300.781	314.711	13.930	4,6%	7,0%	5,3%	716.680
Vessels (units)	3.273	3.220	-53	-1,6%	-1,2%	-0,9%	8.378
Railway traffic (units)	4.726	3.985	-741	-15,7%	-16,2%	-19,5%	11.083
Cruise passengers (units)	1.245.687	1.305.172	59.485	4,8%	6,4%	32,3%	3.997.441
Ferry passengers (units)	472.391	488.181	15.790	3,3%	1,4%	9,6%	1.788.258

Monthly evolution of the accumulated traffic of goods. Tonnes



Monthly evolution of the accumulated traffic of goods. TEU



TRAFFIC INDICATORS

Main indicators	Monthly accumulated				Last 12 months	Total traffic 2025	% 12 months-2025
	2025	2026	Diff. 26-25	%			
Goods indicators by navigation and operation (tonnes)							
Navigation (t)	28.082.814	29.313.668	1.230.854	4,4%	68.926.992	67.696.137	1,8%
Domestic	3.616.969	3.668.897	51.928	1,4%	8.856.511	8.804.583	0,6%
Foreign	24.465.844	25.644.771	1.178.926	4,8%	60.070.481	58.891.555	2,0%
Operation (t)	28.082.814	29.313.668	1.230.854	4,4%	68.926.992	67.696.137	1,8%
Loaded	8.117.733	7.881.439	-236.293	-2,9%	19.529.798	19.766.091	-1,2%
Unloaded	9.925.654	10.133.436	207.781	2,1%	24.265.386	24.057.604	0,9%
Transit	10.039.427	11.298.793	1.259.366	12,5%	25.131.808	23.872.442	5,3%
Goods indicators by main units							
Containers (TEU)	1.545.295	1.611.488	66.193	4,3%	3.795.256	3.729.063	1,8%
TEU O/D	913.020	901.148	-11.872	-1,3%	2.203.138	2.215.009	-0,5%
TEU transit	632.275	710.340	78.065	12,3%	1.592.119	1.514.054	5,2%
Containerized tonnes	14.985.822	15.539.600	553.778	3,7%	35.843.206	35.289.429	1,6%
Level of containerization	75,35%	76,00%			75,34%	75,06%	
Passengers (u)	1.718.078	1.793.353	75.275	4,4%	5.860.974	5.785.699	1,3%
Regular line	472.391	488.181	15.790	3,3%	1.804.048	1.788.258	0,9%
Pleasure cruises	1.245.687	1.305.172	59.485	4,8%	4.056.926	3.997.441	1,5%
Automobiles (u)	300.781	314.711	13.930	4,6%	730.610	716.680	1,9%
Loaded	183.308	178.850	-4.458	-2,4%	412.011	416.469	-1,1%
Unloaded	77.320	96.225	18.905	24,5%	223.818	204.913	9,2%
Transit	40.153	39.636	-517	-1,3%	94.781	95.298	-0,5%
Vessels (u)	3.273	3.220	-53	-1,6%	8.325	8.378	-0,6%
Number of calls	3.273	3.220	-53	-1,6%	8.325	8.378	-0,6%
Gross Tonnage (GT)	141.866.983	143.855.374	1.988.391	1,4%	379.156.992	377.168.601	0,5%
Average tonnes by vessel	8.580	9.104	523	6,1%	8.280	8.080	2,5%
UTI	178.228	181.905	3.677	2,1%	434.085	430.408	0,9%
Domestic	115.390	115.377	-13	-0,0%	281.948	281.961	-0,0%
% Full	61,5%	62,1%			61,6%	61,3%	
Foreign	62.838	66.528	3.690	5,9%	152.138	148.448	2,5%
% Full	89,5%	91,9%			90,0%	89,0%	

TRAFFIC INDICATORS

Breakdown of total traffic (tonnes)	Monthly accumulated				% 26-25 accum. April	% 26-25 accum. March	% of total accum. 2026
	2025	2026	Diff. 26-25	%			
Goods indicators by type of packaging (t)	28.082.814	29.313.668	1.230.854	4,4%	5,5%	3,7%	100%
Liquid bulk	6.677.122	7.224.829	547.707	8,2%	21,4%	29,1%	24,6%
Hydrocarbons	5.073.029	4.966.574	-106.454	-2,1%	11,5%	18,9%	16,9%
Petrol	2.314.041	2.309.923	-4.118	-0,2%	7,8%	4,6%	7,9%
Natural gas	1.228.056	1.305.618	77.562	6,3%	35,5%	49,4%	4,5%
Diesel oils	1.039.720	918.441	-121.279	-11,7%	-0,4%	36,0%	3,1%
Fuel oil	388.295	242.314	-145.981	-37,6%	-19,2%	-14,4%	0,8%
Other petroleum products	90.125	178.771	88.645	98,4%	39,1%	-6,3%	0,6%
Remainder	12.792	11.508	-1.284	-10,0%	-18,0%	-21,2%	0,0%
Other liquid bulk	1.604.094	2.258.255	654.161	40,8%	53,7%	61,1%	7,7%
Chemical products	922.183	1.402.028	479.845	52,0%	93,1%	98,6%	4,8%
Biofuel	343.394	536.907	193.512	56,4%	31,2%	32,4%	1,8%
Oils and fats	307.294	313.205	5.911	1,9%	5,3%	32,0%	1,1%
Natural/artificial fertilizer	24.254	6.114	-18.140	-74,8%	-87,4%	-87,4%	0,0%
Other food products	5.664	0	-5.664	-100,0%	-100,0%	-100,0%	0,0%
Remainder	1.303	0	-1.303				0,0%
Dry bulk	1.516.612	1.642.675	126.063	8,3%	-4,9%	-9,7%	5,6%
Special installation	1.392.726	1.534.017	141.291	10,1%	-3,3%	-9,3%	5,2%
Soya bean	552.042	705.217	153.175	27,7%	11,9%	11,0%	2,4%
Cement and clinker	233.850	231.369	-2.481	-1,1%	5,7%	-2,6%	0,8%
Potashes	176.547	227.356	50.809	28,8%	24,9%	41,9%	0,8%
Cereals and flours	322.316	215.324	-106.992	-33,2%	-49,7%	-63,7%	0,7%
Common salt	100.070	133.731	33.661	33,6%	21,7%	46,7%	0,5%
Remainder	7.900	21.019	13.118	166,1%			0,1%
Without special installation	123.886	108.658	-15.228	-12,3%	-23,3%	-14,9%	0,4%
Scrap iron	57.419	57.728	309	0,5%	-1,7%	8,3%	0,2%
Other non-metallic minerals	43.448	30.777	-12.671	-29,2%	-49,9%	-54,4%	0,1%
Chemical products	7.950	8.200	250	3,1%	-49,7%	15,9%	0,0%
Other minerals and metallic waste	9.800	5.500	-4.300	-43,9%	-43,9%	-21,4%	0,0%
Iron and steel products	0	4.000	4.000	0,0%	0,0%	0,0%	0,0%
Remainder	5.270	2.454	-2.816	-53,4%			0,0%
General cargo	19.889.079	20.446.164	557.085	2,8%	1,4%	-1,9%	69,7%
Containerized	14.985.822	15.539.600	553.778	3,7%	1,5%	-2,3%	53,0%
Tare of containers	3.129.249	3.270.440	141.191	4,5%	3,3%	-1,0%	11,2%
Chemical products	2.742.051	2.710.259	-31.792	-1,2%	-2,0%	-9,8%	9,2%
Other cargo by type	1.661.231	1.543.235	-117.995	-7,1%	-5,9%	-6,8%	5,3%
Other food products	1.219.627	1.321.617	101.990	8,4%	1,1%	-0,4%	4,5%
Machinery and spare parts	981.903	1.055.670	73.767	7,5%	5,1%	-2,8%	3,6%
Remainder	5.251.762	5.638.379	386.617	7,4%	3,9%	1,7%	19,2%
Non-containerized	4.903.257	4.906.564	3.307	0,1%	1,0%	-0,6%	16,7%
Tare of platform and wagons (Ro-Ro)	1.758.191	1.796.510	38.319	2,2%	3,5%	3,4%	6,1%
Other cargo by type	843.999	1.029.539	185.539	22,0%	21,5%	14,9%	3,5%
Automobiles and parts	508.550	564.276	55.726	11,0%	14,9%	14,0%	1,9%
Machinery and spare parts	507.109	297.342	-209.767	-41,4%	-42,7%	-42,7%	1,0%
Frozen fish	150.416	254.110	103.694	68,9%	79,4%	88,5%	0,9%
Remainder	1.134.993	964.789	-170.204	-15,0%	-13,8%	-15,9%	3,3%

TRAFFIC INDICATORS

Breakdown of traffic in transit (tonnes)	Monthly accumulated				% 26-25 accum. April	% 26-25 accum. March	% of total accum. 2026
	2025	2026	Diff. 26-25	%			
Goods indicators by type of packaging (t)	10.039.427	11.298.793	1.259.366	12,5%	14,1%	12,5%	100%
Liquid bulk	3.081.986	3.369.406	287.420	9,3%	19,2%	33,3%	29,8%
Hydrocarbons	2.269.591	2.036.271	-233.319	-10,3%	-3,4%	6,7%	18,0%
Petrol	1.629.298	1.481.411	-147.888	-9,1%	-5,1%	-6,9%	13,1%
Diesel oils	265.720	280.006	14.286	5,4%	44,7%	217,9%	2,5%
Fuel oil	369.877	208.810	-161.068	-43,5%	-31,4%	-11,5%	1,8%
Other petroleum products	4.695	66.045	61.350	1306,8%	209,8%	209,8%	0,6%
Remainder	0	0	0				0,0%
Other liquid bulk	812.396	1.333.135	520.739	64,1%	91,8%	127,1%	11,8%
Chemical products	534.285	967.881	433.596	81,2%	162,7%	243,8%	8,6%
Biofuel	263.365	358.806	95.441	36,2%	11,8%	12,8%	3,2%
Oils and fats	14.745	6.448	-8.297	-56,3%	-56,3%	42,5%	0,1%
Remainder	0	0	0				0,0%
Dry bulk	0	0	0				0,0%
Special installation	0	0	0				0,0%
Remainder	0	0	0				0,0%
Without special installation	0	0	0				0,0%
Remainder	0	0	0				0,0%
General cargo	6.957.440	7.929.386	971.946	14,0%	12,2%	5,9%	70,2%
Containerized	6.673.452	7.631.509	958.057	14,4%	12,2%	5,4%	67,5%
Tare of containers	1.280.885	1.450.239	169.354	13,2%	14,6%	6,8%	12,8%
Chemical products	1.179.454	1.218.899	39.445	3,3%	5,1%	-11,1%	10,8%
Other food products	655.594	860.139	204.545	31,2%	17,4%	13,8%	7,6%
Other cargo by type	719.128	657.299	-61.828	-8,6%	-6,1%	-8,8%	5,8%
Other construction materials	495.943	542.242	46.299	9,3%	6,6%	6,3%	4,8%
Remainder	2.342.448	2.902.691	560.243	23,9%	19,9%	15,0%	25,7%
Non-containerized	283.988	297.877	13.889	4,9%	11,7%	19,0%	2,6%
Automobiles and parts	78.087	84.400	6.313	8,1%	17,1%	16,9%	0,7%
Tare of platform and wagons (Ro-Ro)	51.009	48.503	-2.506	-4,9%	0,4%	9,2%	0,4%
Other cargo by type	45.107	39.950	-5.157	-11,4%	-1,5%	7,9%	0,4%
Oils and fats	13.715	39.580	25.864	188,6%	174,6%	212,8%	0,4%
Chemical products	17.148	20.273	3.124	18,2%	14,7%	5,2%	0,2%
Remainder	78.922	65.172	-13.750	-17,4%	-12,2%	-5,7%	0,6%

TRAFFIC INDICATORS

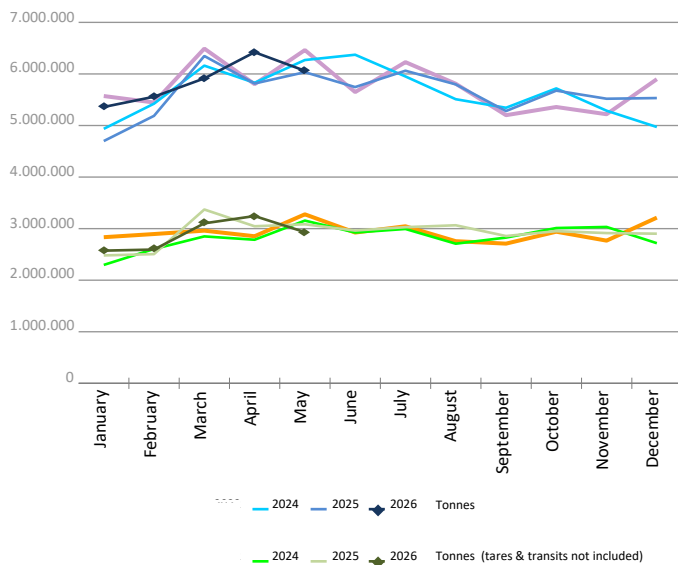
Monthly evolution of traffic. Tonnes

Monthly evolution of traffic	Total tonnes			%		Tonnes (tares & transits not included)			%	
	2025	2026	Diff. 26-25	Monthly	Accumulated	2025	2026	Diff. 26-25	Monthly	Accumulated
January	4.698.525	5.359.230	660.705	14,1%	14,1%	2.480.314	2.573.241	92.927	3,7%	3,7%
February	5.187.251	5.558.232	370.981	7,2%	10,4%	2.506.128	2.594.117	87.989	3,5%	3,6%
March	6.348.125	5.913.909	-434.216	-6,8%	3,7%	3.370.919	3.103.128	-267.792	-7,9%	-1,0%
April	5.814.600	6.421.048	606.447	10,4%	5,5%	3.045.985	3.243.918	197.933	6,5%	1,0%
May	6.034.313	6.061.250	26.937	0,4%	4,4%	3.084.496	2.932.265	-152.231	-4,9%	-0,3%
June	5.745.464					2.962.500				
July	6.062.104					3.028.302				
August	5.797.704					3.065.150				
September	5.280.189					2.856.506				
October	5.676.339					2.951.114				
November	5.519.207					2.913.805				
December	5.532.317					2.901.863				
Total	67.696.137	29.313.668				35.167.081	14.446.668			

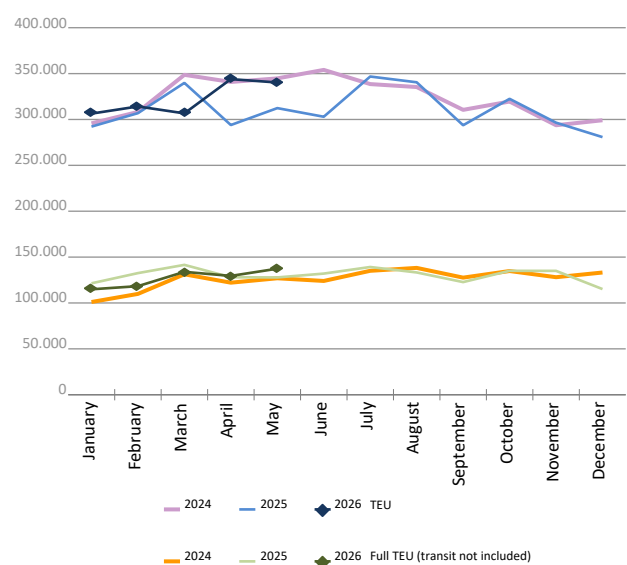
Monthly evolution of traffic. TEU

Monthly evolution of traffic	Total TEU			%		Full TEU (transit not included)			%	
	2025	2026	Diff. 26-25	Monthly	Accumulated	2025	2026	Diff. 26-25	Monthly	Accumulated
January	292.214	306.374	14.160	4,8%	4,8%	121.427	114.896	-6.532	-5,4%	-5,4%
February	306.907	314.170	7.263	2,4%	3,6%	132.547	118.332	-14.216	-10,7%	-8,2%
March	339.868	306.663	-33.206	-9,8%	-1,3%	141.546	133.914	-7.633	-5,4%	-7,2%
April	293.945	343.976	50.031	17,0%	3,1%	128.018	129.475	1.457	1,1%	-5,1%
May	312.362	340.307	27.945	8,9%	4,3%	127.830	137.367	9.538	7,5%	-2,7%
June	302.973					132.015				
July	346.803					139.215				
August	340.507					133.270				
September	293.712					122.768				
October	322.489					135.042				
November	296.513					134.989				
December	280.773					115.132				
Total	3.729.063	1.611.488				1.563.796	633.982			

Goods (total tonnes)



Containers (total TEU)



CONTAINER TRAFFIC

TEU evolution

Full-unloaded foreign	Full TEU			%		Full-loaded foreign	Full TEU			%	
	2025	2026	Diff. 26-25	Monthly	Accumulated		2025	2026	Diff. 26-25	Monthly	Accumulated
January	58.514	57.191	-1.323	-2,3%	-2,3%	January	53.689	48.256	-5.433	-10,1%	-10,1%
February	59.518	55.902	-3.616	-6,1%	-4,2%	February	62.193	53.049	-9.144	-14,7%	-12,6%
March	58.039	68.671	10.632	18,3%	3,2%	March	72.524	54.562	-17.962	-24,8%	-17,3%
April	59.383	60.679	1.296	2,2%	3,0%	April	58.847	58.047	-801	-1,4%	-13,5%
May	60.421	70.370	9.950	16,5%	5,7%	May	56.575	56.501	-74	-0,1%	-11,0%
June	60.504					June	61.306				
July	68.515					July	59.793				
August	60.236					August	62.780				
September	60.013					September	52.677				
October	61.678					October	62.151				
November	60.269					November	65.105				
December	52.554					December	54.077				
Total	719.640	312.812				Total	721.714	270.414			

Full-unloaded domestic	Full TEU			%		Full-loaded domestic	Full TEU			%	
	2025	2026	Diff. 26-25	Monthly	Accumulated		2025	2026	Diff. 26-25	Monthly	Accumulated
January	2.226	2.016	-210	-9,4%	-9,4%	January	7.000	7.433	433	6,2%	6,2%
February	2.523	1.973	-550	-21,8%	-16,0%	February	8.315	7.408	-907	-10,9%	-3,1%
March	2.522	2.343	-180	-7,1%	-12,9%	March	8.462	8.339	-124	-1,5%	-2,5%
April	2.426	2.428	3	0,1%	-9,7%	April	7.362	8.322	960	13,0%	1,2%
May	2.198	2.124	-74	-3,4%	-8,5%	May	8.636	8.372	-264	-3,1%	0,2%
June	2.380					June	7.826				
July	2.380					July	8.527				
August	2.069					August	8.186				
September	1.970					September	8.110				
October	2.400					October	8.814				
November	1.833					November	7.783				
December	1.984					December	6.517				
Total	26.907	10.884				Total	95.536	39.873			

Full - Transit	Full TEU			%		Empty	Empty TEU			%	
	2025	2026	Diff. 26-25	Monthly	Accumulated		2025	2026	Diff. 26-25	Monthly	Accumulated
January	100.847	106.020	5.173	5,1%	5,1%	January	69.940	85.459	15.519	22,2%	22,2%
February	100.796	123.268	22.472	22,3%	13,7%	February	73.564	72.571	-993	-1,3%	10,1%
March	117.424	84.799	-32.625	-27,8%	-1,6%	March	80.899	87.951	7.052	8,7%	9,6%
April	82.980	110.064	27.084	32,6%	5,5%	April	82.947	104.438	21.491	25,9%	14,0%
May	84.081	100.821	16.740	19,9%	8,0%	May	100.452	102.119	1.668	1,7%	11,0%
June	76.145					June	94.813				
July	96.395					July	111.193				
August	96.112					August	111.126				
September	74.854					September	96.089				
October	74.530					October	112.918				
November	77.072					November	84.453				
December	93.174					December	72.468				
Total	1.074.408	524.970				Total	1.090.859	452.536			

CONTAINER TRAFFIC

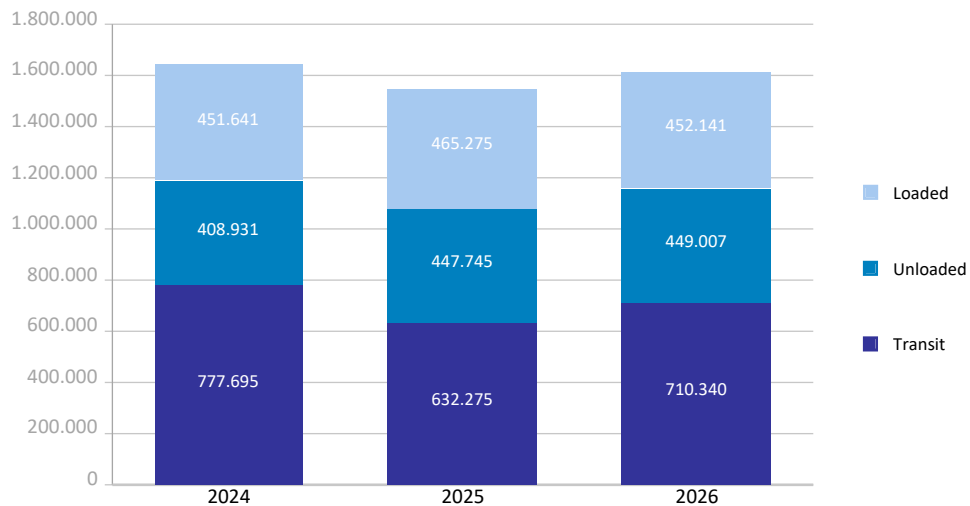
TEU

Container traffic	Monthly accumulated 2025			Monthly accumulated 2026			%
	Domestic	Foreign	Total	Domestic	Foreign	Total	
Total traffic	92.977	1.452.318	1.545.295	93.819	1.517.669	1.611.488	4,3%
Unloaded	48.990	730.810	779.800	47.587	763.466	811.053	4,0%
Roll On-Roll Off	8.540	2.440	10.980	8.097	1.956	10.053	-8,4%
Lift On-Lift Off	40.451	728.370	768.820	39.491	761.510	801.001	4,2%
Loaded	43.987	721.508	765.495	46.232	754.203	800.435	4,6%
Roll On-Roll Off	9.218	2.368	11.586	8.597	2.135	10.732	-7,4%
Lift On-Lift Off	34.769	719.140	753.909	37.635	752.068	789.703	4,7%

Breakdown by navigation and operation	Monthly accumulated 2025			Monthly accumulated 2026			%
	Domestic	Foreign	Total	Domestic	Foreign	Total	
Loaded	43.964	421.311	465.275	46.212	405.929	452.141	-2,8%
Full	39.774	303.827	343.601	39.873	270.414	310.287	-9,7%
Empty	4.190	117.484	121.674	6.339	135.515	141.854	16,6%
Unloaded	48.350	399.396	447.745	46.703	402.304	449.007	0,3%
Full	11.894	295.873	307.767	10.884	312.812	323.696	5,2%
Empty	36.456	103.523	139.979	35.820	89.492	125.312	-10,5%
Transit	664	631.612	632.275	904	709.436	710.340	12,3%
Full	14	486.114	486.128	160	524.810	524.970	8,0%
Empty	650	145.498	146.148	744	184.627	185.371	26,8%

Total traffic	92.977	1.452.318	1.545.295	93.819	1.517.669	1.611.488	4,3%
Full	51.682	1.085.813	1.137.495	50.916	1.108.036	1.158.952	1,9%
Empty	41.296	366.505	407.800	42.903	409.634	452.536	11,0%
% Empty	44,4%	25,2%	26,4%	45,7%	27,0%	28,1%	
% Transit	0,7%	43,5%	40,9%	1,0%	46,7%	44,1%	

General cargo distribution by operation (TEU)

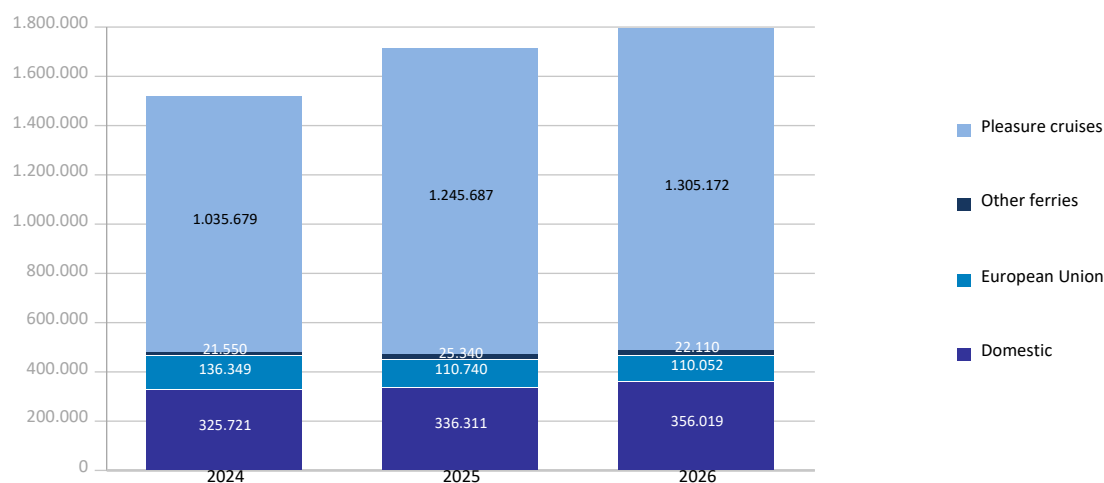


PASSENGER TRAFFIC

Total passenger traffic (units)	Monthly accumulated				% 26-25 accum. April	% 26-25 accum. March
	2025	2026	Diff. 26-25	%		
Total passengers	1.718.078	1.793.353	75.275	4,4%	4,8%	23,7%
Embarkation	590.253	624.004	33.751	5,7%	2,8%	19,7%
Disembarkation	551.699	586.201	34.502	6,3%	5,1%	18,6%
Transit	576.126	583.148	7.022	1,2%	6,7%	34,3%
Regular line ferries	472.391	488.181	15.790	3,3%	1,4%	9,6%
Embarkation	253.211	262.122	8.911	3,5%	1,6%	11,2%
Disembarkation	219.180	226.059	6.879	3,1%	1,2%	7,7%
Domestic	336.311	356.019	19.708	5,9%	3,5%	11,0%
Embarkation	185.918	196.238	10.320	5,6%	3,0%	12,3%
Disembarkation	150.393	159.781	9.388	6,2%	4,1%	9,3%
European Union	110.740	110.052	-688	-0,6%	-0,8%	11,7%
Embarkation	54.297	53.148	-1.149	-2,1%	-0,0%	13,8%
Disembarkation	56.443	56.904	461	0,8%	-1,4%	9,8%
Other ferries	25.340	22.110	-3.230	-12,7%	-16,5%	-14,7%
Embarkation	12.996	12.736	-260	-2,0%	-12,5%	-10,7%
Disembarkation	12.344	9.374	-2.970	-24,1%	-21,0%	-19,1%
Pleasure cruises	1.245.687	1.305.172	59.485	4,8%	6,4%	32,3%
Embarkation	337.042	361.882	24.840	7,4%	4,1%	30,7%
Disembarkation	332.519	360.142	27.623	8,3%	8,4%	30,2%
Transit	576.126	583.148	7.022	1,2%	6,7%	34,3%
Barcelona cruise visitors *	759.555	784.762	25.206	3,32%	6,53%	33,15%
Automobile passengers	147.181	153.498	6.317	4,3%	2,6%	8,3%

Total passenger calls (units)	Monthly accumulated				% 26-25 accum. April	% 26-25 accum. March
	2025	2026	Diff. 26-25	%		
Total number of calls	1.516	1.440	-76	-5,0%	-5,0%	-4,2%
Regular Line ferries	1.216	1.137	-79	-6,5%	-7,4%	-9,1%
Pleasure cruises	300	303	3	1,0%	8,0%	41,3%

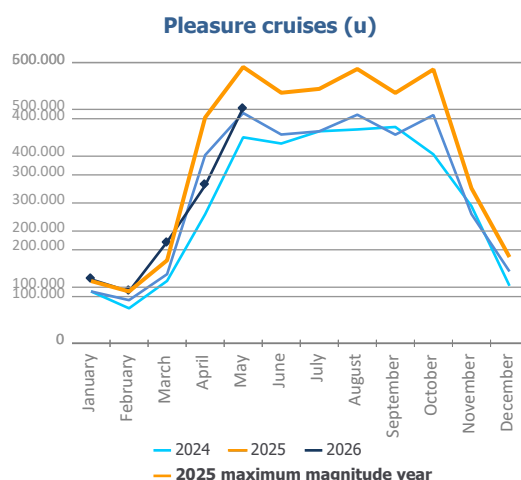
Passenger traffic distribution (u)



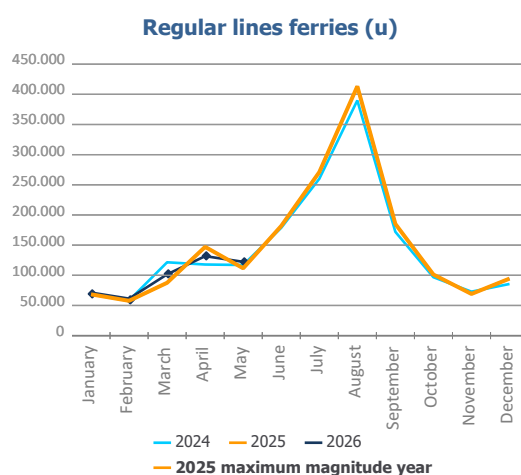
* The Port of Barcelona's statistics reflect cruise ship movements in accordance with international accounting standards. However, these figures do not show the actual number of cruise passengers arriving in the city. To address this, a new calculation system, developed in collaboration with Turisme de Barcelona, homogenizes the cruise passenger data reported by the Port with that provided by the city.

PASSENGER CLASSIFICATION

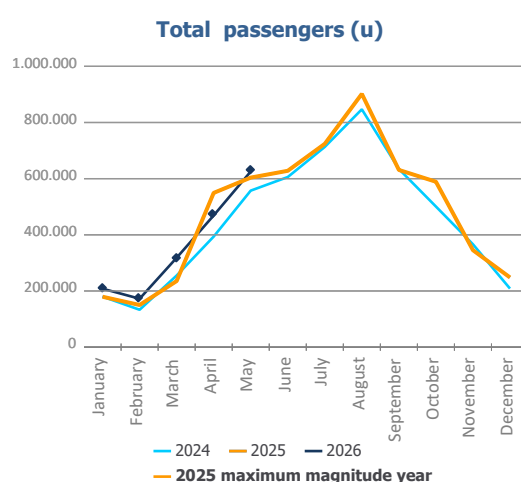
Monthly evolution of passenger traffic	Pleasure cruises			%	
	2025	2026	Diff. 26-25	Monthly	Accumulated
January	111.054	136.856	25.802	23,2%	23,2%
February	92.360	111.147	18.787	20,3%	21,9%
March	147.890	216.773	68.883	46,6%	32,3%
April	402.225	337.317	-64.908	-16,1%	6,4%
May	492.158	503.079	10.921	2,2%	4,8%
June	446.267				
July	453.131				
August	488.584				
September	445.948				
October	487.841				
November	276.291				
December	153.692				
Total	3.997.441	1.305.172			



Monthly evolution of passenger traffic	Regular lines ferries			%	
	2025	2026	Diff. 26-25	Monthly	Accumulated
January	68.438	71.304	2.866	4,2%	4,2%
February	57.696	61.300	3.604	6,2%	5,1%
March	87.560	101.548	13.988	16,0%	9,6%
April	147.079	131.721	-15.358	-10,4%	1,4%
May	111.618	122.308	10.690	9,6%	3,3%
June	181.775				
July	270.921				
August	413.279				
September	185.106				
October	101.232				
November	69.085				
December	94.469				
Total	1.788.258	488.181			



Monthly evolution of passenger traffic	Total passengers			%	
	2025	2026	Diff. 26-25	Monthly	Accumulated
January	179.492	208.160	28.668	16,0%	16,0%
February	150.056	172.447	22.391	14,9%	15,5%
March	235.450	318.321	82.871	35,2%	23,7%
April	549.304	469.038	-80.266	-14,6%	4,8%
May	603.776	625.387	21.611	3,6%	4,4%
June	628.042				
July	724.052				
August	901.863				
September	631.054				
October	589.073				
November	345.376				
December	248.161				
Total	5.785.699	1.793.353			

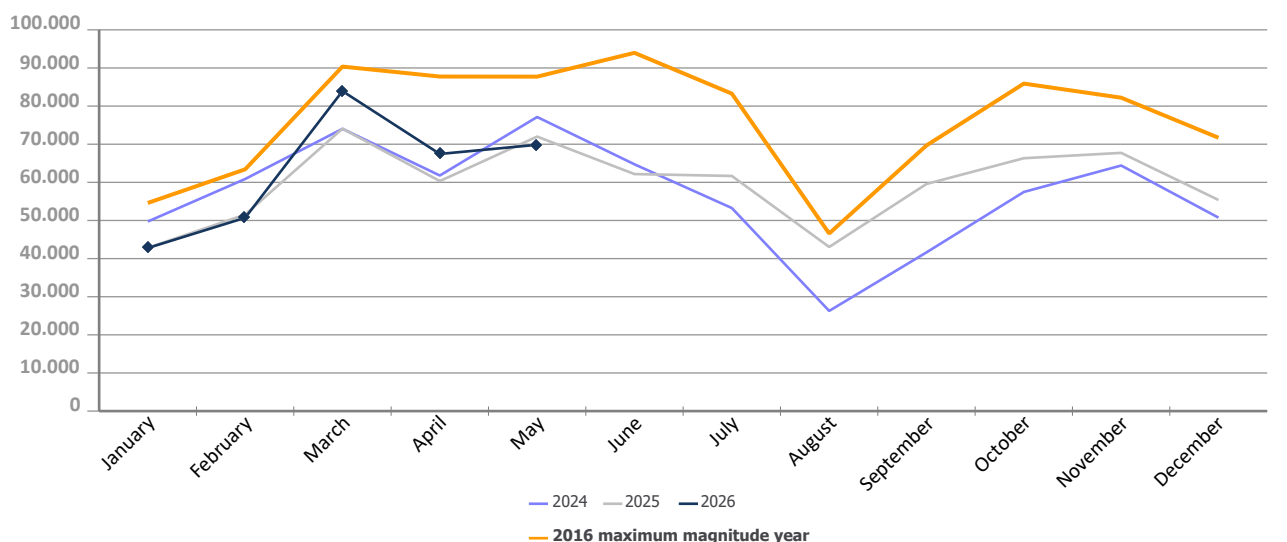


AUTOMOBILE TRAFFIC

Total automobile traffic (units)	Monthly accumulated				% 26-25 accum. April	% 26-25 accum. March
	2025	2026	Diff. 26-25	%		
Automobile traffic by navigation and operation	300.781	314.711	13.930	4,6%	7,0%	5,3%
Domestic	56.055	48.113	-7.942	-14,2%	-19,3%	-20,7%
Loaded	51.300	46.100	-5.200	-10,1%	-15,4%	-17,6%
Unloaded	4.731	2.013	-2.718	-57,5%	-61,6%	-53,2%
Transit	24	0	-24			
Foreign	244.726	266.598	21.872	8,9%	12,9%	10,7%
Loaded	132.008	132.750	742	0,6%	1,9%	-1,6%
Unloaded	72.589	94.212	21.623	29,8%	35,5%	37,3%
Transit	40.129	39.636	-493	-1,2%	7,6%	3,8%
Electric or Hybrid Automobile Traffic	31.186	55.420	24.234	77,7%	79,9%	91,7%
% of the total automobiles	10,37%	17,61%				
Domestic	633	998	365	57,7%	38,8%	-20,4%
Loaded	486	917	431	88,7%	76,4%	-0,5%
Unloaded	147	81	-66	-44,9%	-69,8%	-77,7%
Transit						
Foreign	30.553	54.422	23.869	78,1%	80,9%	95,5%
Loaded	14.938	9.271	-5.667	-37,9%	-47,3%	-36,9%
Unloaded	10.881	41.450	30.569	280,9%	370,6%	481,8%
Transit	4.734	3.701	-1.033	-21,8%	-86,0%	-92,9%

Monthly automobile traffic (u)	Monthly		Accumulated		%	
	2025	2026	2025	2026	Monthly	Accumulated
January	42.823	42.779	42.823	42.779	-0,1%	-0,1%
February	51.536	50.704	94.359	93.483	-1,6%	-0,9%
March	74.087	83.927	168.446	177.410	13,3%	5,3%
April	60.332	67.445	228.778	244.855	11,8%	7,0%
May	72.003	69.856	300.781	314.711	-3,0%	4,6%
June	62.171		362.952			
July	61.677		424.629			
August	43.044		467.673			
September	59.574		527.247			
October	66.326		593.573			
November	67.730		661.303			
December	55.377		716.680			

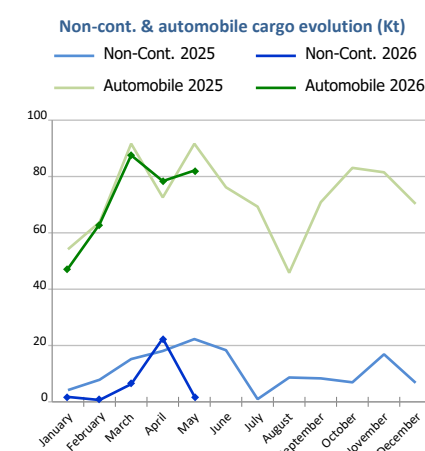
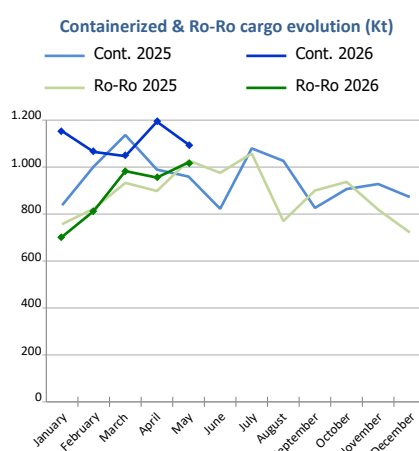
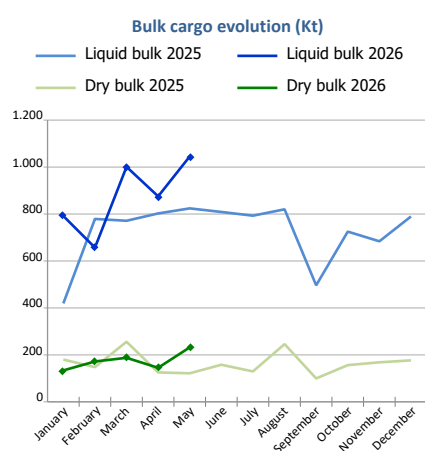
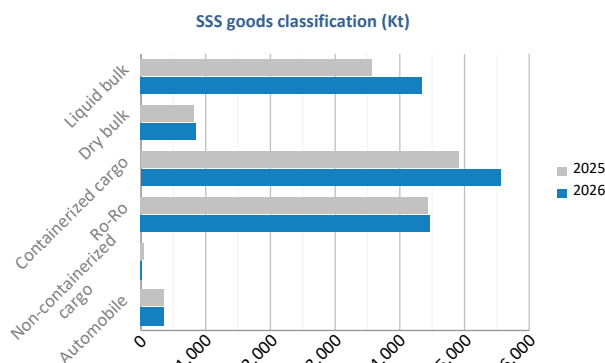
Evolution of monthly automobile traffic (u)



SHORT SEA SHIPPING (SSS)

SSS Goods classification

Goods classification. Tonnes	Monthly accumulated		%	% of total port traffic
	2025	2026		
Liquid bulk	3.596.329	4.370.767	21,5%	60,5%
Dry bulk	830.338	870.039	4,8%	53,0%
Containerized cargo	4.926.211	5.554.191	12,7%	36,1%
Ro-Ro	4.439.221	4.474.734	0,8%	100,0%
Non-containerized cargo	67.523	33.135	-50,9%	37,6%
Automobile	373.809	358.407	-4,1%	73,2%
Total	14.233.430	15.661.273	10,0%	53,4%



SSS General Cargo	Spanish Islands			SSS Remainder			TOTAL		
	2025	2026	%	2025	2026	%	2025	2026	%
Containerized cargo	423.541	434.711	2,6%	4.502.670	5.119.481	13,7%	4.926.211	5.554.191	12,7%
O/D	409.050	422.822	3,4%	1.444.248	1.449.485	0,4%	1.853.298	1.872.306	1,0%
Transit	14.491	11.889	-18,0%	3.058.422	3.669.996	20,0%	3.072.913	3.681.885	19,8%
Ro-Ro	2.620.310	2.478.427	-5,4%	1.818.911	1.996.307	9,8%	4.439.221	4.474.734	0,8%
O/D	2.620.310	2.478.427	-5,4%	1.585.135	1.757.961	10,9%	4.205.444	4.236.387	0,7%
Transit	0	0	0,0%	233.777	238.346	2,0%	233.777	238.346	2,0%
Non-cont. cargo	655	560	-14,5%	66.868	32.576	-51,3%	67.523	33.135	-50,9%
O/D	655	560	-14,5%	64.785	31.867	-50,8%	65.440	32.427	-50,4%
Transit	0	0	0,0%	2.083	709	-66,0%	2.083	709	-66,0%
Automobile	92.453	74.373	-19,6%	281.356	284.034	1,0%	373.809	358.407	-4,1%
O/D	92.443	74.371	-19,5%	232.110	230.352	-0,8%	324.553	304.723	-6,1%
Transit	9	2	-81,4%	49.246	53.682	9,0%	49.255	53.684	9,0%



Short Sea Shipping (SSS):

The transport of cargo/goods and passengers between ports situated in the European Union or between these ports and non-European ports with a coastline in seas bordering Europe. This applies to cargo either originating from or is destined for these countries (in accordance with the European Shortsea Network).

Motorways of the sea (MoS):

Short Sea Shipping services as an alternative to road transport and which fulfill the following criteria: minimum frequency of 3 calls per week and calling at a maximum of 3 different ports.

General cargo:

Including containerized cargo, non-containerized cargo, Ro-Ro and automobiles.

Containerized cargo:

Excluding container cargo by Ro-Ro.

Non-containerized cargo:

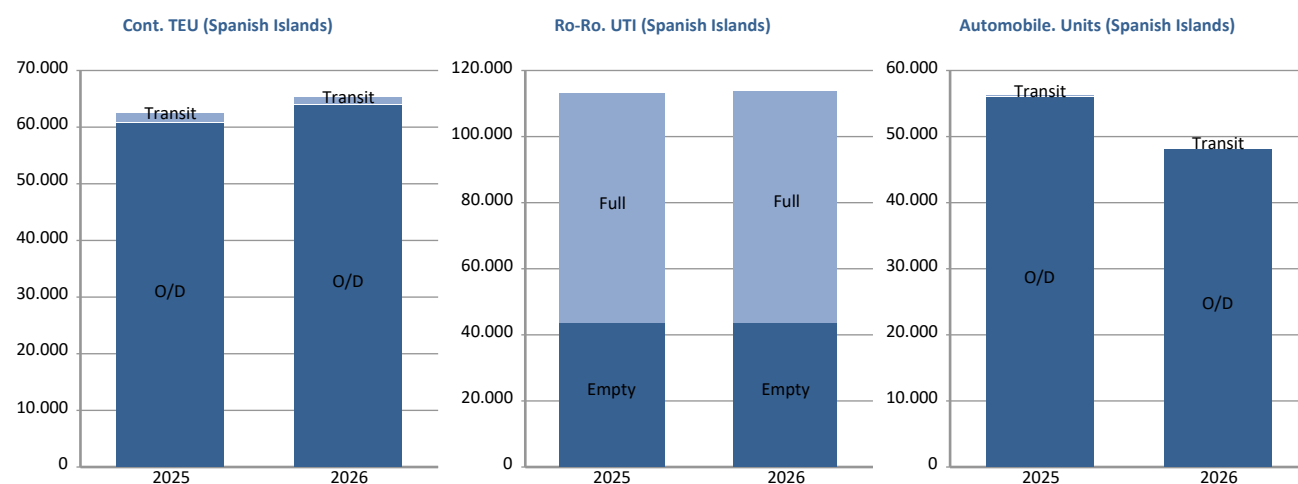
General non-containerized goods other than Ro-Ro and excluding automobiles.

Ro-Ro:

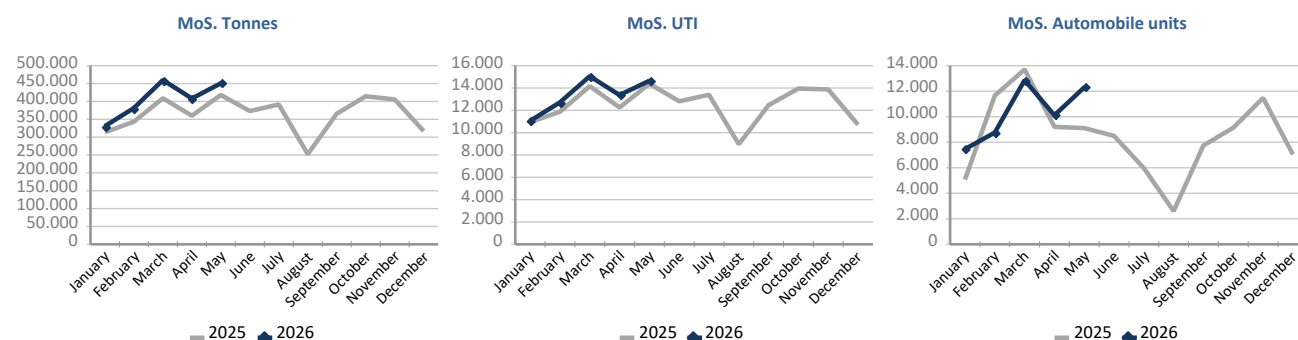
General cargo carried in UTI's. Excluding automobiles.

SHORT SEA SHIPPING (SSS)

SSS General cargo	Spanish Islands			SSS Remainder			TOTAL		
	2025	2026	%	2025	2026	%	2025	2026	%
Containerized cargo. TEU	62.373	65.200	4,5%	444.518	501.419	12,8%	506.891	566.619	11,8%
O/D	60.601	63.750	5,2%	172.591	189.201	9,6%	233.191	252.950	8,5%
Full	40.625	41.127	1,2%	97.740	98.758	1,0%	138.365	139.885	1,1%
Empty	19.976	22.623	13,2%	74.851	90.443	20,8%	94.827	113.065	19,2%
Transit	1.773	1.451	-18,2%	271.928	312.218	14,8%	273.700	313.669	14,6%
Full	1.307	846	-35,2%	229.810	259.321	12,8%	231.117	260.167	12,6%
Empty	466	605	29,7%	42.118	52.898	25,6%	42.584	53.502	25,6%
Ro-Ro. UTI	113.190	113.877	0,6%	65.037	68.025	4,6%	178.227	181.902	2,1%
Full	69.497	70.429	1,3%	57.709	62.373	8,1%	127.206	132.802	4,4%
Empty	43.693	43.448	-0,6%	7.328	5.652	-22,9%	51.021	49.100	-3,8%
Automobile units	56.028	48.095	-14,2%	188.403	188.101	-0,2%	244.431	236.196	-3,4%
O/D	56.023	48.094	-14,2%	156.449	157.774	0,8%	212.472	205.868	-3,1%
Transit	5	1	-80,0%	31.954	30.327	-5,1%	31.959	30.328	-5,1%



Motorways of the Sea (MoS)	EU			Non-EU			TOTAL		
	2025	2026	%	2025	2026	%	2025	2026	%
Tonnes	1.840.020	2.026.287	10,1%	4.155	5.093	22,6%	1.844.175	2.031.379	10,2%
Loaded	996.212	1.120.652	12,5%	3.994	5.015	25,6%	1.000.206	1.125.668	12,5%
Unloaded	843.808	905.634	7,3%	162	77	-52,2%	843.969	905.712	7,3%
UTI	63.478	66.651	5,0%	146	209	43,2%	63.624	66.860	5,1%
Loaded	32.661	34.730	6,3%	132	205	55,3%	32.793	34.935	6,5%
Unloaded	30.817	31.921	3,6%	14	4	-71,4%	30.831	31.925	3,5%
Automobile units	48.636	51.378	5,6%	118	115	-2,5%	48.754	51.493	5,6%
Loaded	46.401	49.673	7,1%	118	115	-2,5%	46.519	49.788	7,0%
Unloaded	2.235	1.705	-23,7%	0	0		2.235	1.705	-23,7%

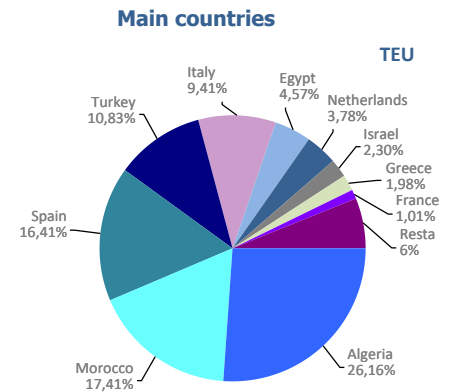


UTI: All those means of unitization, self-propelled or otherwise, that are directly or indirectly used as a means of land transport (e.g. trailers, platforms, trucks, freezer trucks, etc.) are considered as UTI. Containers are not considered to be included, except those that are handled by an equipment transport of the own terminal.

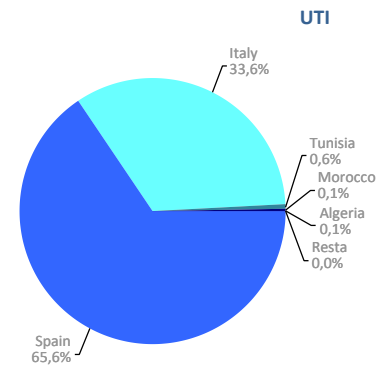
SHORT SEA SHIPPING (SSS)

SSS Ranking countries by mode of packaging

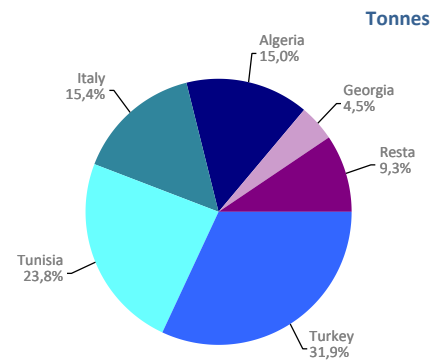
Containerized cargo. TEU	Monthly accumulated				% of total 2026
	2025	2026	Diff. 26-25	%	
Total	506.891	566.619	59.727	11,8%	100%
Algeria	101.085	148.247	47.162	46,7%	26,2%
Morocco	51.667	98.662	46.995	91,0%	17,4%
Spain	86.280	92.998	6.718	7,8%	16,4%
Turkey	56.378	61.367	4.989	8,8%	10,8%
Italy	54.859	53.322	-1.537	-2,8%	9,4%
Egypt	24.343	25.886	1.543	6,3%	4,6%
Netherlands	30.483	21.437	-9.047	-29,7%	3,8%
Israel	21.095	13.024	-8.071	-38,3%	2,3%
Greece	17.295	11.191	-6.104	-35,3%	2,0%
France	26.406	5.721	-20.685	-78,3%	1,0%
Remainder	37.001	34.766	-2.236	-6,0%	6,1%



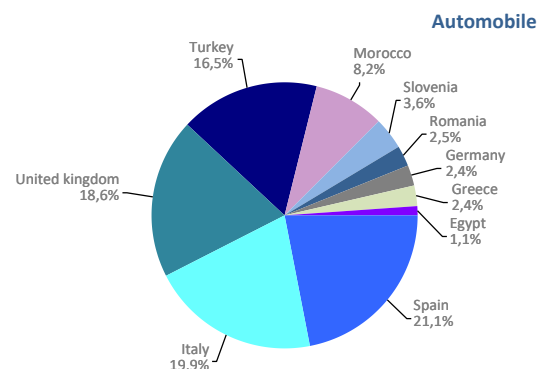
Ro-Ro. UTI	Monthly accumulated				% of total 2026
	2025	2026	Diff. 26-25	%	
Total	178.227	181.902	3.675	2,1%	100%
Spain	119.614	119.380	-234	-0,2%	65,6%
Italy	57.054	61.148	4.094	7,2%	33,6%
Tunisia	1.344	1.062	-282	-21,0%	0,6%
Morocco	146	209	63	43,2%	0,1%
Algeria	69	102	33	47,8%	0,1%
Remainder	0	1	1	0,0%	0,0%



Non-cont. cargo. Tonnes	Monthly accumulated				% of total 2026
	2025	2026	Diff. 26-25	%	
Total	67.523	33.135	-34.387	-50,9%	100%
Turkey	20.901	10.570	-10.331	-49,4%	31,9%
Tunisia	8.202	7.900	-303	-3,7%	23,8%
Italy	20.092	5.092	-15.000	-74,7%	15,4%
Algeria	8.073	4.980	-3.093	-38,3%	15,0%
Georgia	3.501	1.503	-1.998	-57,1%	4,5%
Remainder	6.753	3.091	-3.662	-54,2%	9,3%



Automobile. Units	Monthly accumulated				% of total 2026
	2025	2026	Diff. 26-25	%	
Total	244.431	236.196	-8.235	-3,4%	100%
Spain	61.321	49.727	-11.594	-18,9%	21,1%
Italy	47.364	46.892	-472	-1,0%	19,9%
United kingdom	38.707	43.837	5.130	13,3%	18,6%
Turkey	46.173	38.940	-7.233	-15,7%	16,5%
Morocco	14.491	19.348	4.857	33,5%	8,2%
Slovenia	7.691	8.430	739	9,6%	3,6%
Romania	6.521	5.847	-674	-10,3%	2,5%
Germany	6.674	5.739	-935	-14,0%	2,4%
Greece	5.514	5.737	223	4,0%	2,4%
Egypt	1.865	2.509	644	34,5%	1,1%
Remainder	8.110	9.190	1.080	13,3%	3,9%

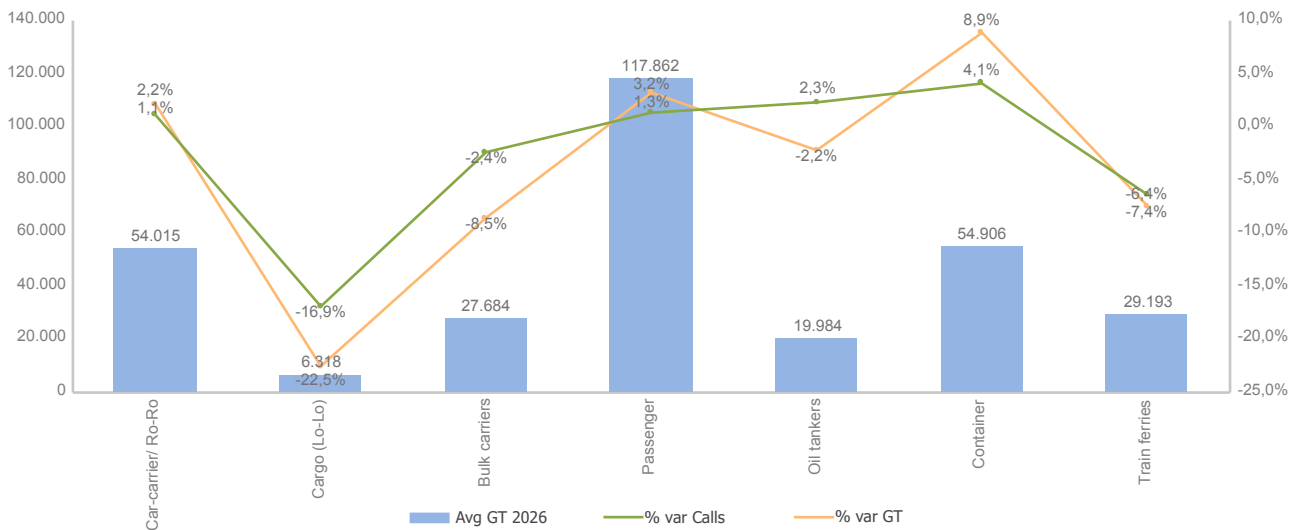


VESSELS TRAFFIC

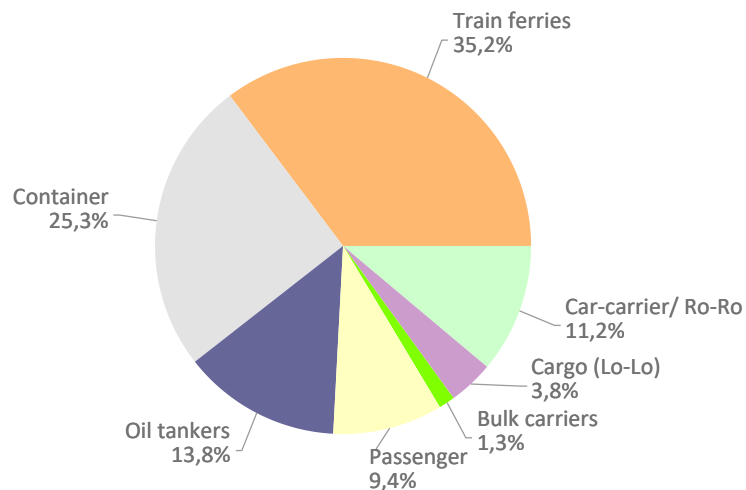
Vessels traffic	Monthly accumulated		
	2025	2026	%
Number of calls	3.273	3.220	-1,6%
Gross Tonnage (GT)	141.866.983	143.855.374	1,4%
Average Gross Tonnage	43.345	44.676	3,1%

Type of vessels	Monthly accumulated						Avg GT	
	2025		2026		%		2025	2026
	Calls	GT	Calls	GT	Calls	GT		
Total	3.273	141.866.983	3.220	143.855.374	-1,6%	1,4%	43.345	44.676
Car-carrier/ Ro-Ro	357	19.088.949	361	19.499.539	1,1%	2,2%	53.470	54.015
Cargo (Lo-Lo)	148	1.002.996	123	777.070	-16,9%	-22,5%	6.777	6.318
Bulk carriers	42	1.241.135	41	1.135.043	-2,4%	-8,5%	29.551	27.684
Passenger	299	34.595.831	303	35.712.325	1,3%	3,2%	115.705	117.862
Oil tankers	433	9.051.727	443	8.852.707	2,3%	-2,2%	20.905	19.984
Container	784	41.156.246	816	44.803.414	4,1%	8,9%	52.495	54.906
Train ferries	1.210	35.730.099	1.133	33.075.276	-6,4%	-7,4%	29.529	29.193

Average GT by type of vessel and variation of calls and GT



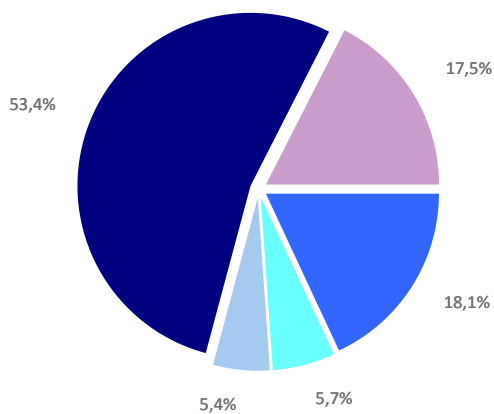
Distribution by type of vessel



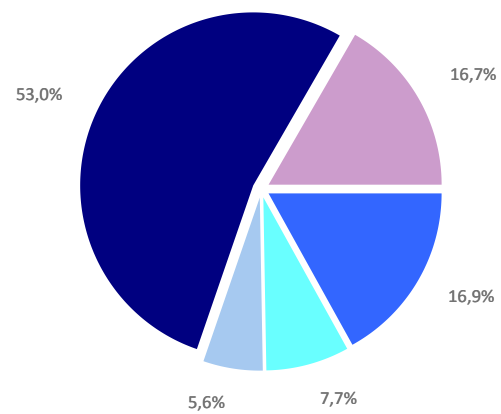
GOODS TRAFFIC

Type of packaging and navigation	Monthly accumulated 2025			Monthly accumulated 2026			%
	Domestic	Foreign	Total	Domestic	Foreign	Total	
Hydrocarbons	224.289	4.848.739	5.073.029	392.625	4.573.950	4.966.574	-2,1%
Incoming	195.974	3.814.113	4.010.087	367.673	3.478.380	3.846.053	-4,1%
Outgoing	28.316	1.034.626	1.062.942	24.952	1.095.570	1.120.522	5,4%
Other liquid bulk	116.593	1.487.501	1.604.094	121.215	2.137.040	2.258.255	40,8%
Incoming	95.048	1.115.594	1.210.642	104.068	1.396.524	1.500.592	24,0%
Outgoing	21.545	371.906	393.451	17.147	740.516	757.663	92,6%
Dry bulk	50.571	1.466.041	1.516.612	97.028	1.545.647	1.642.675	8,3%
Incoming	43.495	946.484	989.979	52.830	987.949	1.040.779	5,1%
Outgoing	7.076	519.557	526.633	44.198	557.698	601.896	14,3%
Containerized cargo	582.855	14.402.967	14.985.822	568.804	14.970.796	15.539.600	3,7%
Incoming	193.293	6.899.845	7.093.138	181.639	7.362.671	7.544.310	6,4%
Outgoing	389.562	7.503.122	7.892.684	387.165	7.608.125	7.995.290	1,3%
Non-containerized cargo	2.642.661	2.260.596	4.903.257	2.489.225	2.417.339	4.906.564	0,1%
Incoming	837.186	1.115.366	1.952.553	813.990	1.149.219	1.963.209	0,5%
Outgoing	1.805.475	1.145.230	2.950.704	1.675.236	1.268.119	2.943.355	-0,2%
Total general cargo	3.225.516	16.663.563	19.889.079	3.058.029	17.388.134	20.446.164	2,8%
Incoming	1.030.480	8.015.211	9.045.691	995.629	8.511.890	9.507.519	5,1%
Outgoing	2.195.036	8.648.352	10.843.388	2.062.401	8.876.244	10.938.645	0,9%
Total throughput (tonnes)	3.616.969	24.465.844	28.082.814	3.668.897	25.644.771	29.313.668	4,4%
Incoming	1.364.996	13.891.403	15.256.399	1.520.200	14.374.743	15.894.943	4,2%
Outgoing	2.251.973	10.574.442	12.826.415	2.148.698	11.270.027	13.418.725	4,6%
Container traffic (TEU)	92.977	1.452.318	1.545.295	93.819	1.517.669	1.611.488	4,3%
Incoming	48.990	730.810	779.800	47.587	763.466	811.053	4,0%
Outgoing	43.987	721.508	765.495	46.232	754.203	800.435	4,6%

Distribution by type of packaging 2025

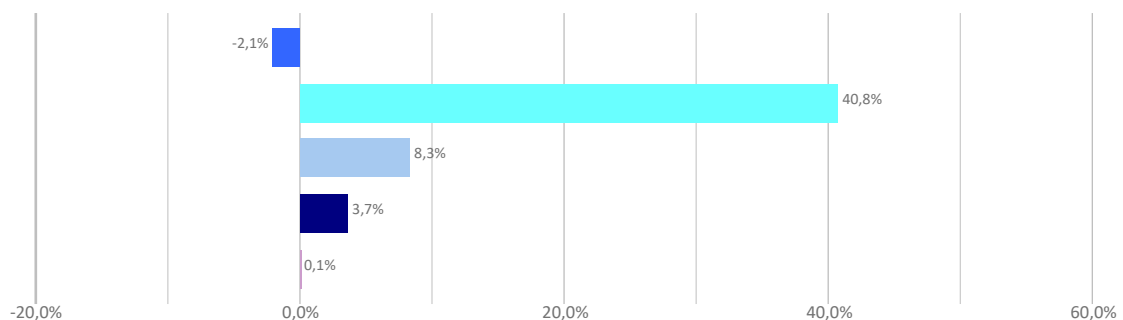


Distribution by type of packaging 2026



Hydrocarbons Liquid bulk Dry bulk Containerized cargo Non Containerized cargo

Annual growth by type of packaging



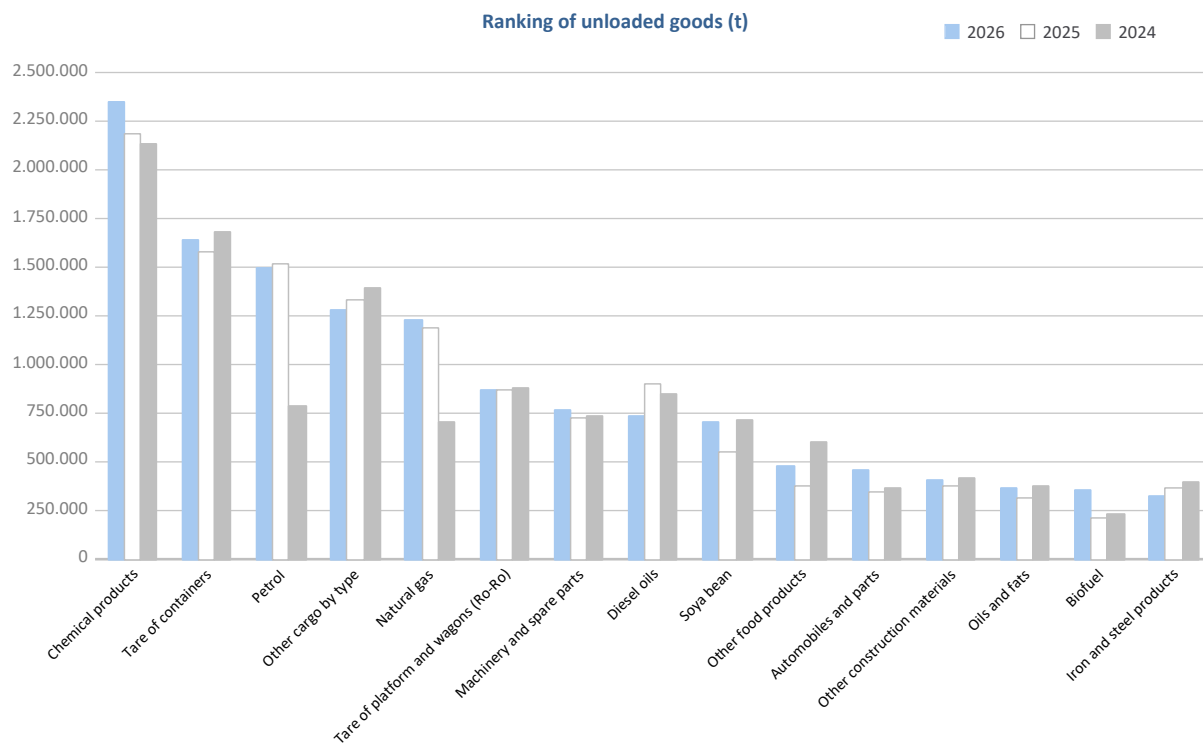
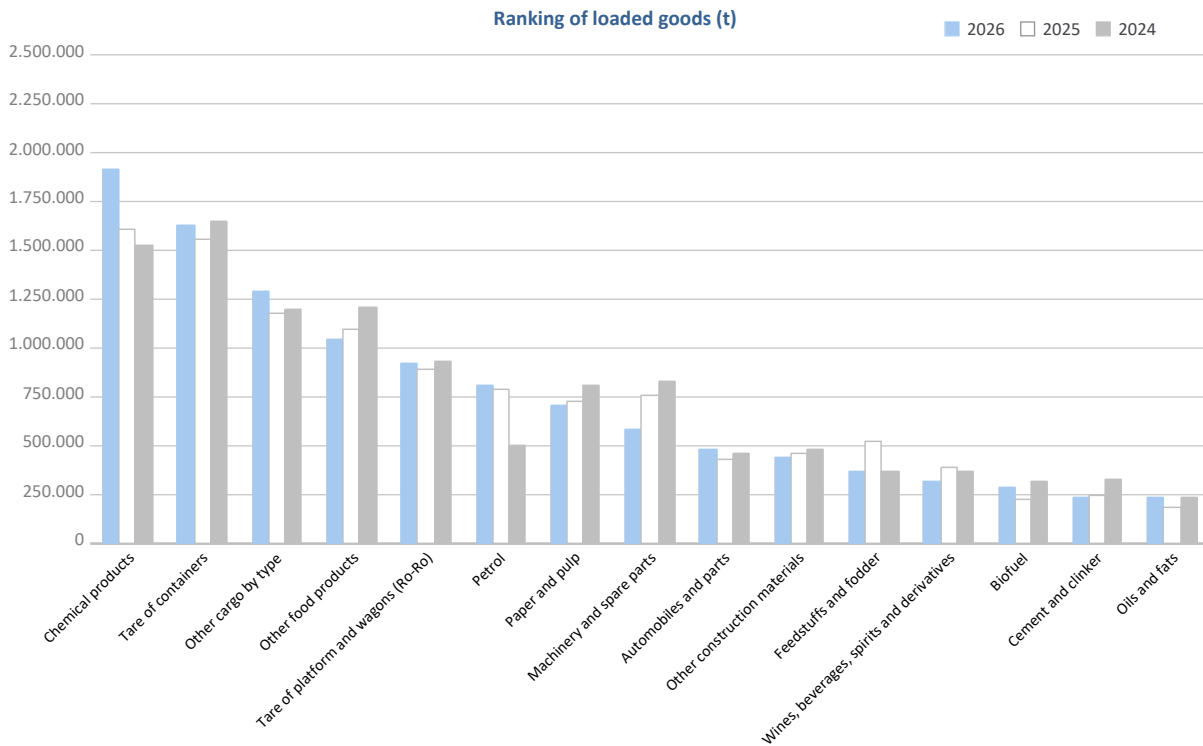
GOODS TRAFFIC

Goods by classification 4.3.7.	Monthly accumulated				% of total accum. 2026
	2025	2026	Diff. 26-25	%	
Tonnes	28.082.814	29.313.668	1.230.854	4,4%	100%
Energy	5.592.975	5.671.582	78.607	1,4%	19,3%
Crude oil	506	190	-316	-62,4%	0,0%
Fuel oil	410.746	260.856	-149.890	-36,5%	0,9%
Diesel oils	1.039.720	918.772	-120.949	-11,6%	3,1%
Petrol	2.314.120	2.310.139	-3.981	-0,2%	7,9%
Other petroleum products	111.513	205.269	93.756	84,1%	0,7%
Petroleum fuel gasses	31.113	11.710	-19.402	-62,4%	0,0%
Coal	12.214	20.937	8.723	71,4%	0,1%
Natural gas	1.228.056	1.305.618	77.562	6,3%	4,5%
Biofuel	444.987	638.090	193.103	43,4%	2,2%
Iron, steel and metallurgical products	1.052.876	1.059.952	7.077	0,7%	3,6%
Iron ore	11.626	4.673	-6.953	-59,8%	0,0%
Other minerals and metallic waste	191.122	193.047	1.926	1,0%	0,7%
Scrap iron	116.655	128.161	11.506	9,9%	0,4%
Iron and steel products	543.594	522.321	-21.273	-3,9%	1,8%
Other metallurgical products	189.879	211.751	21.872	11,5%	0,7%
Non-metallic minerals	336.059	411.161	75.102	22,3%	1,4%
Common salt	124.035	154.431	30.397	24,5%	0,5%
Other non-metallic minerals	212.024	256.730	44.705	21,1%	0,9%
Fertilizers	295.881	386.540	90.659	30,6%	1,3%
Phosphates	1.246	96	-1.150	-92,3%	0,0%
Potashes	183.881	233.919	50.039	27,2%	0,8%
Natural/artificial fertilizer	110.754	152.525	41.771	37,7%	0,5%
Chemicals	3.791.962	4.260.404	468.442	12,4%	14,5%
Chemical products	3.791.962	4.260.404	468.442	12,4%	14,5%
Construction materials	1.108.017	1.119.398	11.381	1,0%	3,8%
Asphalt	2.755	2.806	51	1,9%	0,0%
Cement and clinker	269.707	267.658	-2.049	-0,8%	0,9%
Other construction materials	835.555	848.935	13.379	1,6%	2,9%
Agriculture, livestock and food	5.040.405	5.274.742	234.337	4,6%	18,0%
Cereals and flours	419.212	351.476	-67.736	-16,2%	1,2%
Soya bean	553.132	713.587	160.454	29,0%	2,4%
Fruits, vegetables, pulses	229.371	307.343	77.971	34,0%	1,0%
Wines, beverages, spirits and derivatives	529.231	406.590	-122.641	-23,2%	1,4%
Canned goods	158.378	138.702	-19.675	-12,4%	0,5%
Tobacco, coffee, cocoa	397.243	476.584	79.341	20,0%	1,6%
Oils and fats	502.771	598.121	95.350	19,0%	2,0%
Other food products	1.474.439	1.522.044	47.604	3,2%	5,2%
Frozen fish	190.443	300.155	109.713	57,6%	1,0%
Feedstuffs and fodder	586.185	460.140	-126.045	-21,5%	1,6%
Other cargo	5.201.264	5.123.877	-77.387	-1,5%	17,5%
Timber	217.336	248.081	30.746	14,1%	0,8%
Paper and pulp	988.384	950.011	-38.373	-3,9%	3,2%
Machinery and spare parts	1.489.011	1.353.011	-136.000	-9,1%	4,6%
Other cargo by type	2.506.533	2.572.774	66.241	2,6%	8,8%
Vehicles and transport parts	5.663.375	6.006.011	342.636	6,1%	20,5%
Automobiles and parts	775.936	939.062	163.126	21,0%	3,2%
Tare of platform and wagons (Ro-Ro)	1.758.191	1.796.510	38.319	2,2%	6,1%
Tare of containers	3.129.249	3.270.440	141.191	4,5%	11,2%

GOODS TRAFFIC

Goods by classification 4.3.7.

Ranking of goods (tonnes)

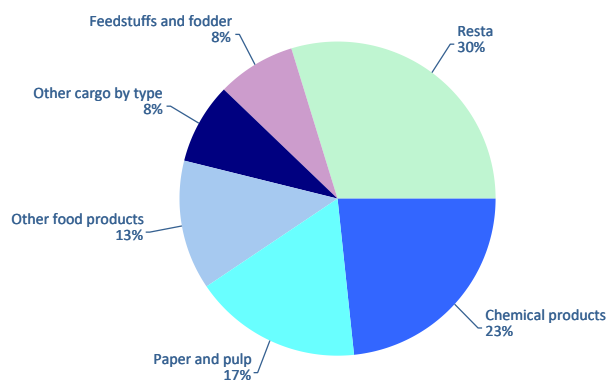


GOODS TRAFFIC

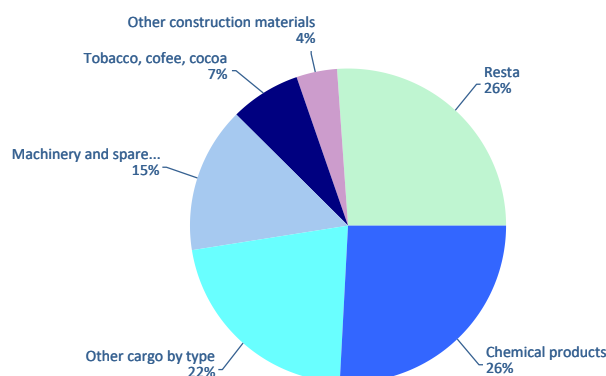
Containerized goods by classification 4.3.7. (Tares & transits not included)

Containerized goods classification	Loaded			Unloaded			Total monthly accumulated		
	2025	2026	%	2025	2026	%	2025	2026	%
Total tonnes (tares & transits not included)	3.656.438	3.259.634	-10,9%	2.807.569	2.828.070	0,7%	6.464.007	6.087.704	-5,8%
Chemical products	779.598	764.299	-2,0%	782.999	726.875	-7,2%	1.562.597	1.491.174	-4,6%
Other cargo by type	276.836	271.803	-1,8%	665.267	614.133	-7,7%	942.103	885.936	-6,0%
Paper and pulp	580.056	560.196	-3,4%	90.001	94.739	5,3%	670.057	654.935	-2,3%
Machinery and spare parts	182.479	153.847	-15,7%	363.267	423.405	16,6%	545.745	577.252	5,8%
Other food products	539.524	429.185	-20,5%	24.509	32.293	31,8%	564.033	461.478	-18,2%
Feedstuffs and fodder	433.222	268.471	-38,0%	18.320	31.358	71,2%	451.541	299.829	-33,6%
Tobacco, coffee, cocoa	34.685	30.468	-12,2%	195.106	203.962	4,5%	229.792	234.430	2,0%
Other construction materials	125.074	111.633	-10,7%	104.012	117.475	12,9%	229.086	229.107	0,0%
Wines, beverages, spirits and derivatives	161.964	156.619	-3,3%	17.637	17.257	-2,2%	179.601	173.876	-3,2%
Iron and steel products	69.879	52.655	-24,6%	116.986	115.273	-1,5%	186.864	167.928	-10,1%
Automobiles and parts	48.984	43.107	-12,0%	99.587	115.312	15,8%	148.571	158.418	6,6%
Other minerals and metallic waste	97.847	107.996	10,4%	17.444	12.263	-29,7%	115.291	120.259	4,3%
Other metallurgical products	30.087	21.257	-29,3%	57.748	62.873	8,9%	87.835	84.130	-4,2%
Oils and fats	56.107	49.980	-10,9%	15.105	25.724	70,3%	71.212	75.703	6,3%
Fruits, vegetables, pulses	19.789	19.197	-3,0%	54.583	54.672	0,2%	74.372	73.869	-0,7%
Biofuel	55.099	51.423	-6,7%	19.556	21.464	9,8%	74.655	72.887	-2,4%
Other non-metallic minerals	37.195	35.587	-4,3%	31.535	36.101	14,5%	68.731	71.689	4,3%
Canned goods	32.116	29.498	-8,1%	45.302	39.276	-13,3%	77.418	68.774	-11,2%
Cereals and flours	17.637	25.394	44,0%	12.556	14.952	19,1%	30.194	40.346	33,6%
Natural/artificial fertilizer	19.634	22.448	14,3%	7.863	7.791	-0,9%	27.497	30.239	10,0%
Scrap iron	8.777	14.551	65,8%	18.262	10.923	-40,2%	27.039	25.474	-5,8%
Frozen fish	813	2.157	165,2%	21.344	20.183	-5,4%	22.158	22.340	0,8%
Timber	7.576	4.348	-42,6%	11.383	12.792	12,4%	18.959	17.140	-9,6%
Other petroleum products	8.853	8.477	-4,2%	5.737	5.981	4,2%	14.590	14.457	-0,9%
Common salt	12.504	9.999	-20,0%	875	812	-7,3%	13.379	10.811	-19,2%
Coal	935	1.387	48,4%	6.683	6.794	1,7%	7.618	8.181	7,4%
Fuel oil	4.070	5.488	34,8%	1.902	1.359	-28,6%	5.972	6.847	14,6%
Cement and clinker	5.362	6.380	19,0%	502	1	-99,9%	5.864	6.381	8,8%
Potashes	350	344	-1,6%	634	1.510	138,2%	984	1.855	88,5%
Asphalt	299	977	226,3%	22	88	300,0%	321	1.065	231,3%
Diesel oils	1	97	10728,9%	0	121		1	218	24209,7%
Petrol	9	172	1810,8%	70	44	-37,1%	79	216	174,3%
Petroleum fuel gasses	8.668	53	-99,4%	101	103	2,1%	8.770	156	-98,2%
Soya bean	203	63	-68,7%	596	83	-86,1%	799	146	-81,7%
Iron ore	186	24	-87,0%	23	56	142,9%	209	81	-61,5%
Phosphates	20	25	21,8%	49	20	-58,7%	70	45	-35,1%
Crude oil	0	31		0	0		0	31	

Distribution of main goods
Loaded 2026



Distribution of main goods
Unloaded 2026

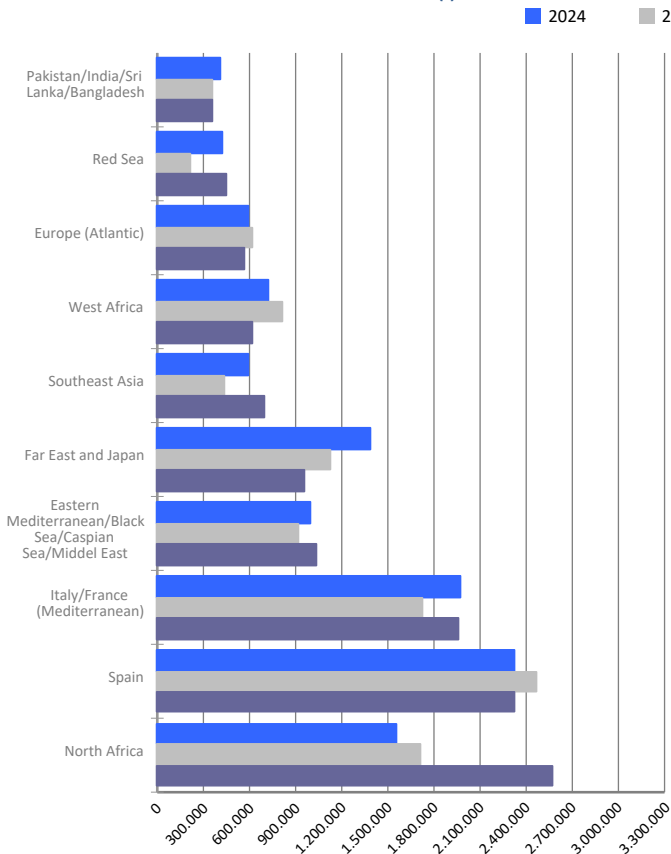


MARITIME TRAFFIC BY ORIGIN/DESTINATION

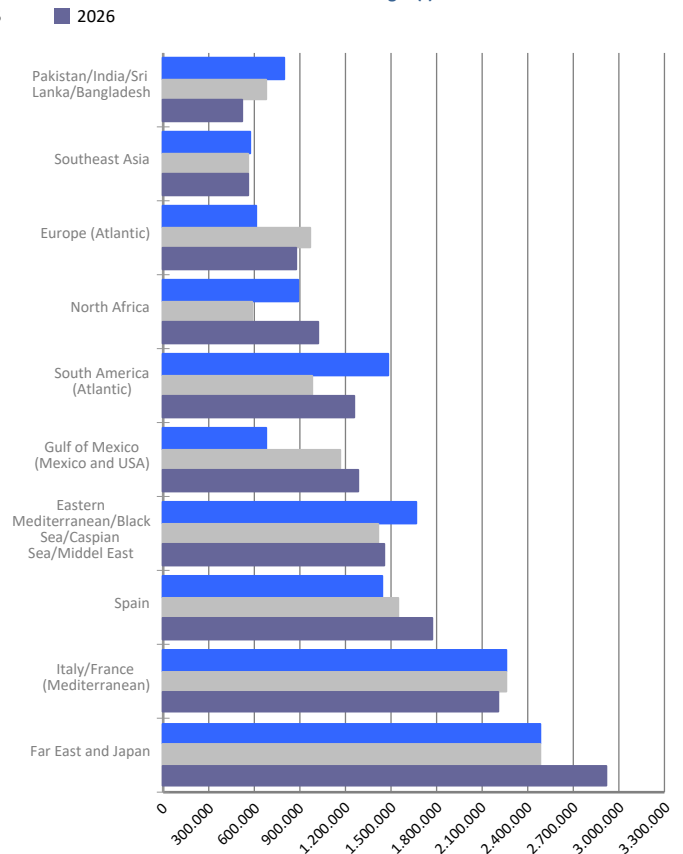
Geographical areas. Tonnes

Geographical areas	Monthly accumulated				% of total accum. 2026
	2025	2026	Diff. 26-25	%	
Tonnes	28.082.814	29.313.668	1.230.854	4,4%	100%
Italy/France (Mediterranean)	3.995.613	4.167.992	172.380	4,3%	14,2%
Spain	4.017.873	4.096.613	78.740	2,0%	14,0%
Far East and Japan	3.606.534	3.870.702	264.169	7,3%	13,2%
North Africa	2.300.999	3.589.613	1.288.614	56,0%	12,2%
Eastern Mediterranean/Black Sea/Caspian Sea/Middel	2.327.178	2.490.316	163.138	7,0%	8,5%
Gulf of Mexico (Mexico and USA)	1.537.012	1.558.972	21.960	1,4%	5,3%
South America (Atlantic)	1.168.644	1.473.629	304.984	26,1%	5,0%
Europe (Atlantic)	1.595.868	1.455.272	-140.596	-8,8%	5,0%
Southeast Asia	1.002.937	1.260.314	257.377	25,7%	4,3%
West Africa	1.119.156	1.080.957	-38.198	-3,4%	3,7%
Red Sea	745.846	973.056	227.210	30,5%	3,3%
Pakistan/India/Sri Lanka/Bangladesh	1.029.079	885.604	-143.476	-13,9%	3,0%
North America (Atlantic)	826.678	502.208	-324.470	-39,2%	1,7%
Persian Gulf/Arabian Sea	1.154.354	458.934	-695.420	-60,2%	1,6%
Central America and Caribbean	561.693	379.477	-182.216	-32,4%	1,3%
Unknown area (Tare of empty containers)	267.684	296.078	28.394	10,6%	1,0%
South-Eastern Africa/Indian Ocean	181.120	252.971	71.851	39,7%	0,9%
South America (Pacific)	302.209	235.521	-66.689	-22,1%	0,8%
Australia, New Zealand/Pacific Islands	126.103	105.977	-20.126	-16,0%	0,4%
North America (Pacific)	105.082	89.783	-15.298	-14,6%	0,3%
Canada (Atlantic) and Great Lakes	111.150	89.678	-21.472	-19,3%	0,3%

Main areas of destination (t)



Main areas of origin (t)

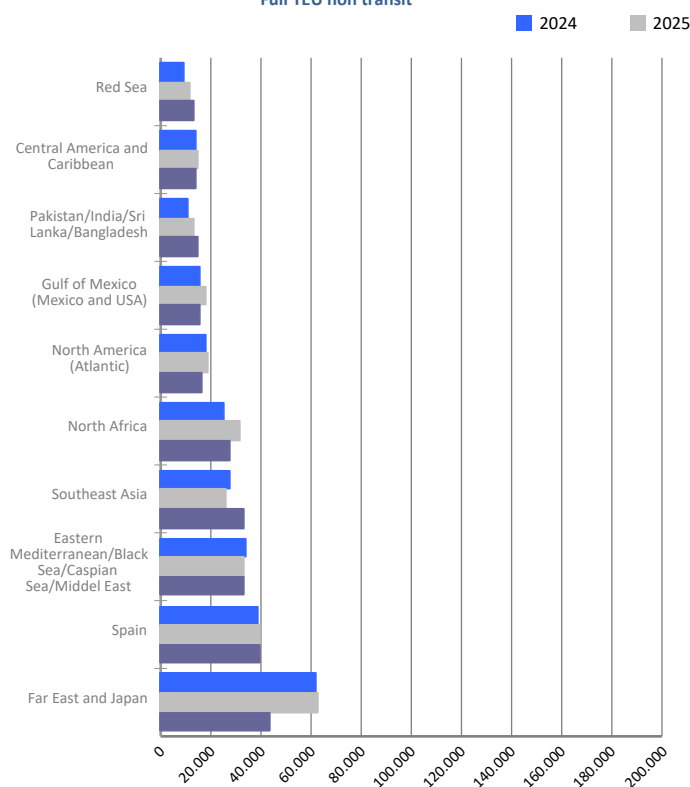


MARITIME TRAFFIC BY ORIGIN/DESTINATION

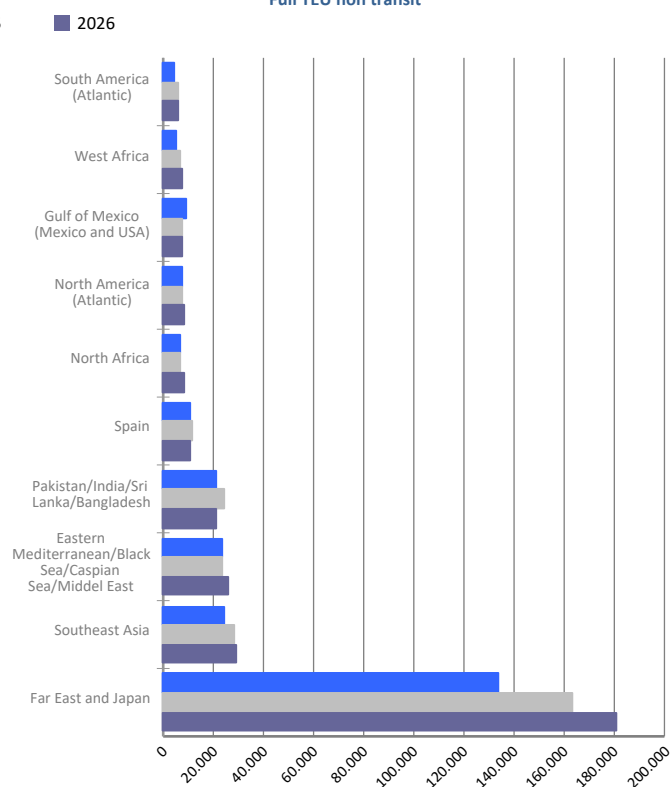
Geographical areas. Full TEU non transit

Geographical areas	Monthly accumulated				% of total accum. 2026
	2025	2026	Diff. 26-25	%	
Full TEU non transit	651.367	633.982	-17.385	-2,7%	100%
Far East and Japan	226.245	224.640	-1.605	-0,7%	35,4%
Southeast Asia	54.178	62.079	7.901	14,6%	9,8%
Eastern Mediterranean/Black Sea/Caspian Sea/Middel	57.465	59.189	1.724	3,0%	9,3%
Spain	51.536	50.612	-923	-1,8%	8,0%
Pakistan/India/Sri Lanka/Bangladesh	38.079	36.348	-1.731	-4,5%	5,7%
North Africa	38.557	36.068	-2.490	-6,5%	5,7%
North America (Atlantic)	26.423	24.555	-1.868	-7,1%	3,9%
Gulf of Mexico (Mexico and USA)	25.728	23.519	-2.209	-8,6%	3,7%
South America (Atlantic)	17.078	17.675	597	3,5%	2,8%
West Africa	15.771	17.333	1.562	9,9%	2,7%
Red Sea	14.755	16.219	1.465	9,9%	2,6%
Central America and Caribbean	17.157	16.075	-1.082	-6,3%	2,5%
South America (Pacific)	14.639	14.924	285	1,9%	2,4%
Persian Gulf/Arabian Sea	28.770	11.891	-16.879	-58,7%	1,9%
South-Eastern Africa/Indian Ocean	9.032	7.323	-1.709	-18,9%	1,2%
Australia, New Zealand/Pacific Islands	4.551	4.491	-60	-1,3%	0,7%
Canada (Atlantic) and Great Lakes	5.245	4.328	-917	-17,5%	0,7%
Europe (Atlantic)	2.436	3.977	1.541	63,3%	0,6%
North America (Pacific)	3.294	2.160	-1.134	-34,4%	0,3%
Italy/France (Mediterranean)	432	579	147	34,0%	0,1%

Main areas of destination
Full TEU non transit



Main areas of origin
Full TEU non transit

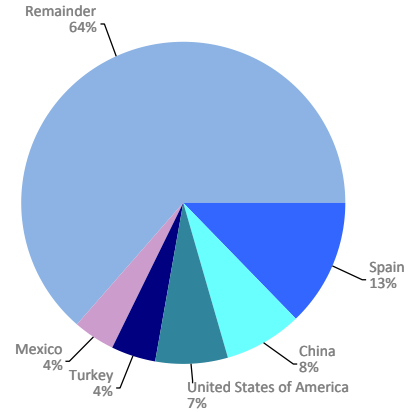


MARITIME TRAFFIC BY ORIGIN/DESTINATION

Ranking countries. Full TEU non transit

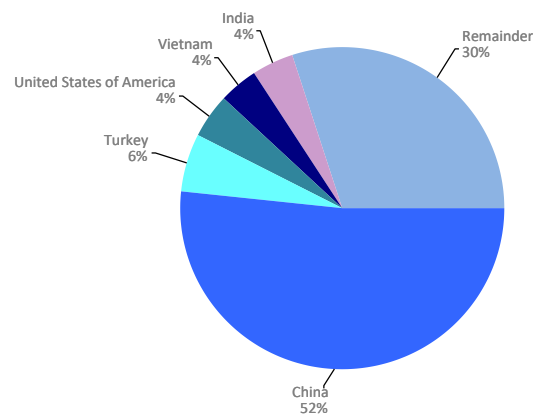
Loaded	Full TEU	% 26-25	% a/packaging
Spain	39.726	0,2%	12,8%
China	24.480	-29,0%	7,9%
United States of America	21.998	-14,9%	7,1%
Turkey	13.958	4,2%	4,5%
Mexico	12.844	-12,9%	4,1%
India	11.807	11,1%	3,8%
Saudi Arabia	10.374	-20,3%	3,3%
Algeria	9.866	3,0%	3,2%
Morocco	9.481	-23,9%	3,1%
Korea (South)	8.628	-16,7%	2,8%
Vietnam	8.093	60,1%	2,6%
Israel	7.787	-7,8%	2,5%
Brazil	7.777	29,2%	2,5%
Japan	6.935	-28,5%	2,2%
Malaysia	6.923	17,9%	2,2%
Remainder	109.614	-11,8%	35,3%
TOTAL	310.287	-9,7%	100%

Main countries. Loaded



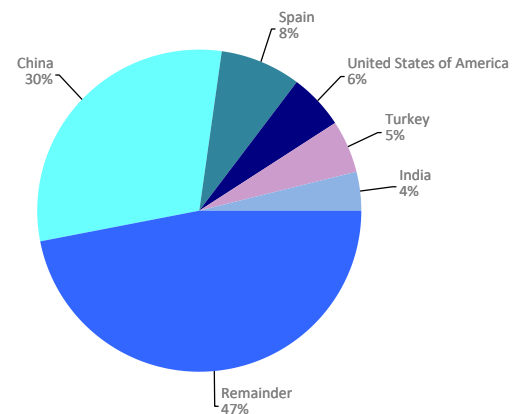
Unloaded	Full TEU	% 26-25	% a/packaging
China	166.879	13,7%	51,6%
Turkey	19.285	8,7%	6,0%
United States of America	13.938	3,9%	4,3%
Vietnam	13.376	10,4%	4,1%
India	12.810	-10,0%	4,0%
Spain	10.887	-8,5%	3,4%
Korea (South)	8.043	-19,6%	2,5%
Egypt	6.533	24,3%	2,0%
Bangladesh	5.685	-18,4%	1,8%
Brazil	4.305	-14,8%	1,3%
Indonesia	4.035	2,8%	1,2%
Thailand	3.734	-7,1%	1,2%
Greece	3.714	18,6%	1,1%
Saudi Arabia	3.638	-25,8%	1,1%
Cote d'Ivoire	3.420	-8,9%	1,1%
Remainder	43.414	-2,6%	13,4%
TOTAL	323.696	5,2%	100%

Main countries. Unloaded



Total	Full TEU	% 26-25	% a/packaging
China	191.359	5,6%	30,2%
Spain	50.612	-1,8%	8,0%
United States of America	35.936	-8,5%	5,7%
Turkey	33.243	6,8%	5,2%
India	24.617	-1,0%	3,9%
Vietnam	21.469	25,1%	3,4%
Korea (South)	16.671	-18,1%	2,6%
Mexico	15.106	-14,7%	2,4%
Saudi Arabia	14.012	-21,8%	2,2%
Brazil	12.082	9,1%	1,9%
Egypt	11.627	5,3%	1,8%
Morocco	10.375	-22,1%	1,6%
Indonesia	10.308	19,6%	1,6%
Algeria	10.287	5,9%	1,6%
Israel	9.660	-9,0%	1,5%
Remainder	166.622	-10,3%	26,3%
TOTAL	633.982	-2,7%	100%

Main countries. Total



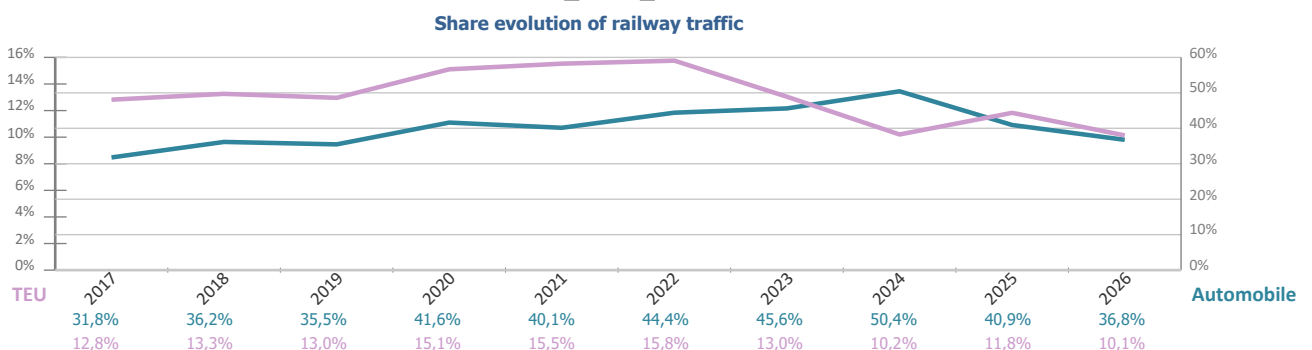
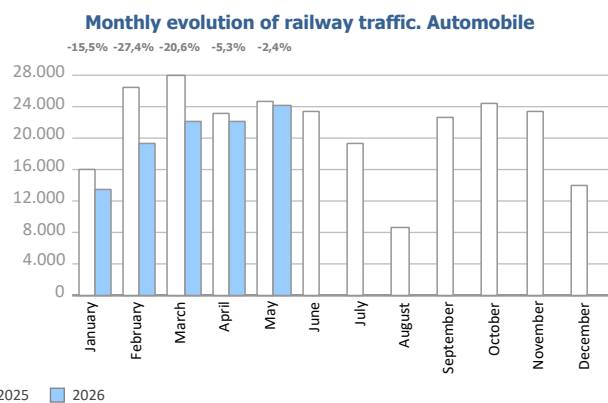
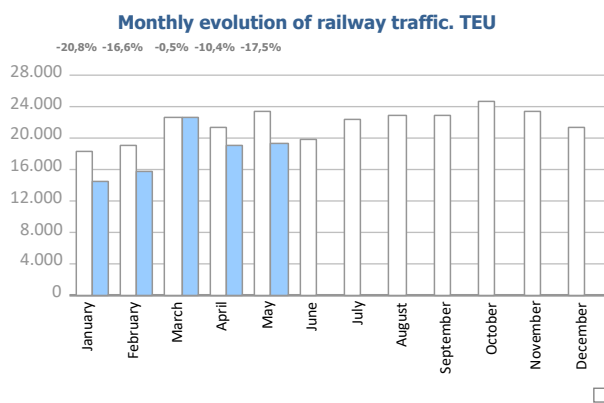
RAILWAY TRAFFIC

Monthly evolution of railway traffic. TEU

Monthly evolution of railway traffic	TEU 2025			TEU 2026			%		% of total port traffic 2026
	Loaded	Unloaded	Total	Loaded	Unloaded	Total	Monthly	Accumulated	
January	8.469	9.885	18.354	8.017	6.527	14.544	-20,8%	-20,8%	8,7%
February	9.016	9.960	18.976	8.023	7.805	15.828	-16,6%	-18,6%	9,7%
March	10.451	12.288	22.739	11.859	10.774	22.633	-0,5%	-11,8%	12,2%
April	10.040	11.254	21.294	9.792	9.286	19.078	-10,4%	-11,4%	10,1%
May	11.651	11.664	23.315	10.244	8.989	19.233	-17,5%	-12,8%	9,8%
June	9.237	10.534	19.771						
July	10.555	11.746	22.301						
August	10.855	11.909	22.764						
September	11.658	11.303	22.961						
October	11.934	12.713	24.647						
November	11.530	11.802	23.332						
December	10.082	11.395	21.477						
Total	125.478	136.453	261.931	47.935	43.381	91.316			10,1%

Monthly evolution of railway traffic. Automobile

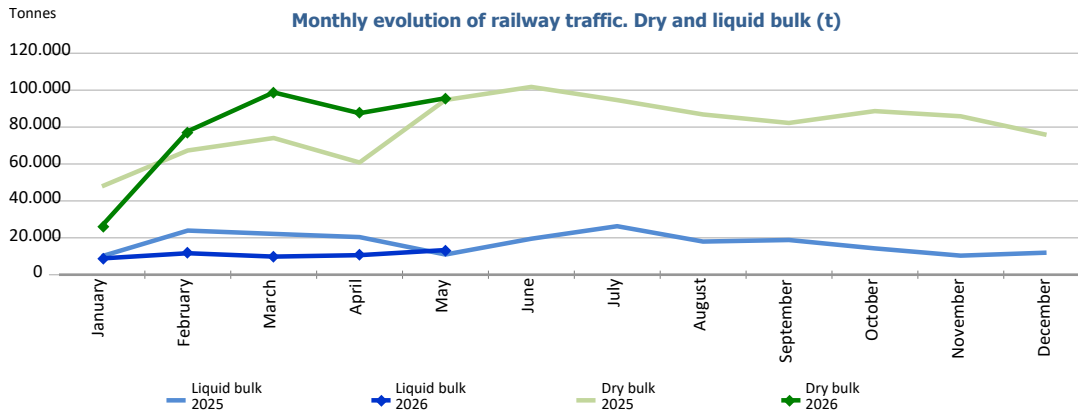
Monthly evolution of railway traffic	Automobile 2025			Automobile 2026			%		% of total port traffic 2026
	Loaded	Unloaded	Total	Loaded	Unloaded	Total	Monthly	Accumulated	
January	2.968	13.032	16.000	1.544	11.971	13.515	-15,5%	-15,5%	39,0%
February	4.381	22.094	26.475	2.196	17.026	19.222	-27,4%	-22,9%	43,0%
March	4.831	23.148	27.979	1.469	20.734	22.203	-20,6%	-22,0%	30,5%
April	3.780	19.481	23.261	350	21.677	22.027	-5,3%	-17,9%	35,9%
May	2.397	22.334	24.731	3.051	21.098	24.149	-2,4%	-14,6%	39,2%
June	2.956	20.530	23.486						
July	3.390	15.927	19.317						
August	1.705	6.882	8.587						
September	2.955	19.618	22.573						
October	3.368	21.134	24.502						
November	2.619	20.771	23.390						
December	2.841	11.190	14.031						
Total	38.191	216.141	254.332	8.610	92.506	101.116			36,8%



RAILWAY TRAFFIC

Monthly evolution of railway traffic. Dry and liquid bulk. Tonnes

Monthly evolution of railway traffic	Tonnes 2025			Tonnes 2026			%	
	Dry bulk	Liquid bulk	Total	Dry bulk	Liquid bulk	Total	Monthly	Accumulated
January	47.878	10.031	57.909	26.516	8.825	35.341	-39,0%	-39,0%
February	67.327	23.920	91.247	77.725	11.641	89.366	-2,1%	-16,4%
March	74.072	22.114	96.186	98.785	9.819	108.604	12,9%	-4,9%
April	60.821	20.390	81.211	87.528	10.587	98.115	20,8%	1,5%
May	94.685	10.947	105.632	95.644	13.363	109.007	3,2%	1,9%
June	101.762	19.497	121.259					
July	94.625	26.285	120.910					
August	86.833	17.962	104.795					
September	82.230	18.811	101.041					
October	88.659	14.271	102.930					
November	85.854	10.326	96.180					
December	75.796	11.945	87.741					
Total	960.542	206.499	1.167.041	386.198	54.235	440.433		



Railway traffic.

Railway gauge traffic (u)	Monthly accumulated		%	% of accumulated total 2026
	2025	2026		
Iberian gauge	2.969	2.372	-20,1%	59,5%
UIC	377	167	-55,7%	4,2%
FGC	1.380	1.446	4,8%	36,3%
Total	4.726	3.985	-15,7%	100%

