

Port of Barcelona traffic statistics

Accumulated data April 2026

Statistics Service

Index

Traffic indicators

Total traffic	3
Main indicators	4
Breakdown of total traffic	5
Breakdown of traffic in transit	6
Monthly evolution of traffic	7

Container traffic

TEU evolution	8
Container traffic (TEU)	9

Passenger traffic

Passenger traffic	10
Passenger classification	11

Automobile traffic

Automobile traffic	12
--------------------	----

Short Sea Shipping traffic (SSS)

SSS Goods classification	13
SSS General cargo and Motorways of the sea (MoS)	14
SSS Ranking countries	15

Vessel traffic

Vessel traffic	16
----------------	----

Goods traffic

Mode of packaging and navigation	17
Goods by classification 4.3.7.	18
Goods ranking	19
Containerized goods by classification 4.3.7.	20

Maritime traffic by origin/destination

Geographical areas. Tonnes	21
Geographical areas. Full TEU non transit	22
Ranqing countries. Full TEU non transit	23

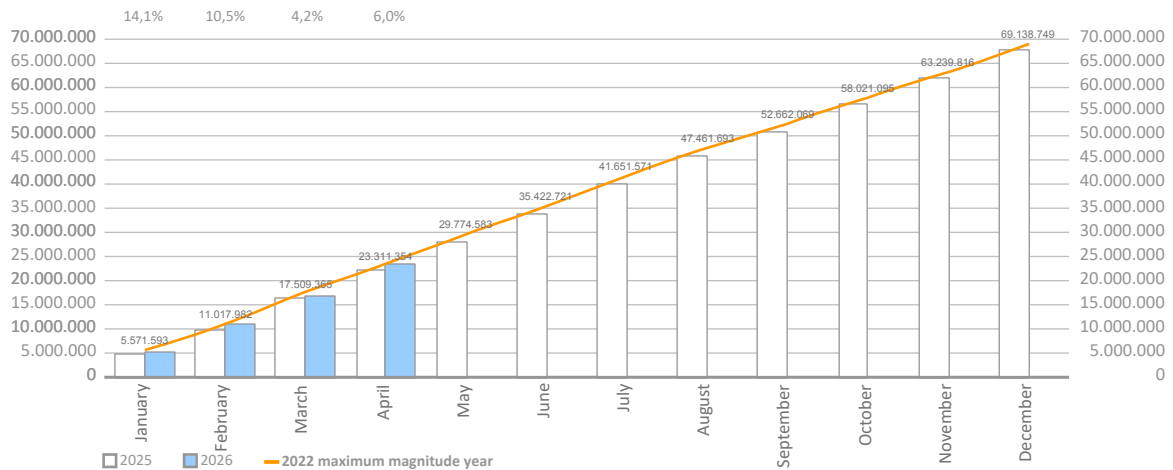
Railway traffic

Evolution of railway traffic (TEU and automobile)	24
Evolution of railway traffic (Solid and liquid bulk)	25
Railway gauge traffic	25

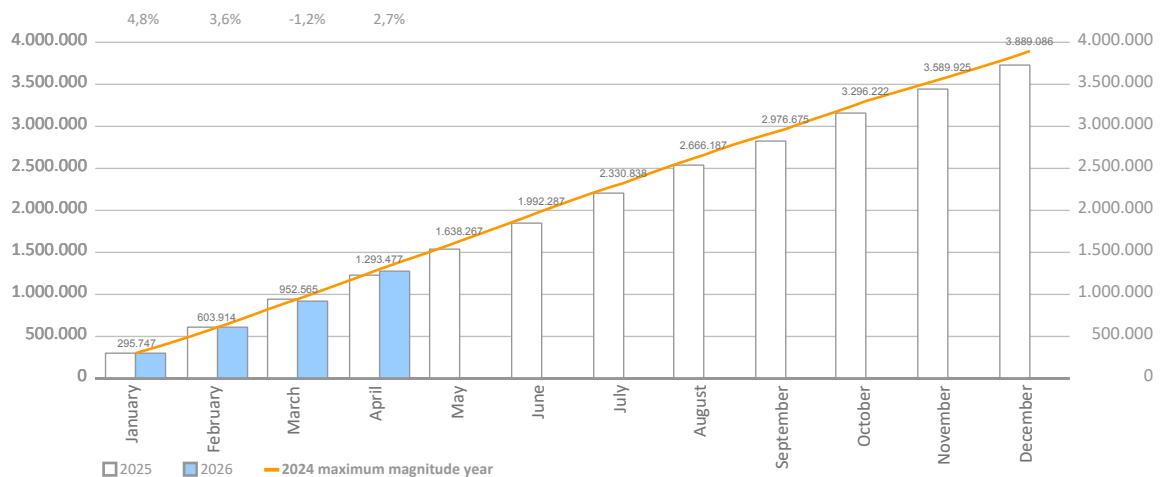
TRAFFIC INDICATORS

Total traffic	Monthly accumulated				% 26-25 accum. March	% 26-25 accum. February	Total traffic 2025
	2025	2026	Diff. 26-25	%			
O/D	14.174.599	14.379.799	205.199	1,4%	-0,1%	2,5%	43.824.893
Transit	7.861.065	8.975.074	1.114.009	14,2%	11,9%	24,3%	23.861.729
Total throughput (tonnes)	22.035.664	23.354.873	1.319.208	6,0%	4,2%	10,5%	67.686.622
Supplies	524.301	520.480	-3.821	-0,7%	-4,1%	-2,2%	1.741.836
Fishing	475	363	-112	-23,6%	-10,2%	-13,4%	1.382
TOTAL TRAFFIC (tonnes)	22.560.440	23.875.715	1.315.276	5,8%	4,0%	10,2%	69.429.839
TEU	1.232.933	1.266.611	33.679	2,7%	-1,2%	3,6%	3.729.051
UTI	136.391	140.251	3.860	2,8%	1,7%	-1,1%	430.408
Automobiles (units)	228.778	244.853	16.075	7,0%	5,3%	-0,9%	716.680
Vessels (units)	2.499	2.469	-30	-1,2%	-0,9%	1,3%	8.378
Railway traffic (units)	3.682	3.087	-595	-16,2%	-19,5%	-27,6%	11.083
Cruise passengers (units)	753.529	804.146	50.617	6,7%	32,9%	21,9%	3.997.441
Ferry passengers (units)	360.773	365.470	4.697	1,3%	9,6%	5,1%	1.788.258

Monthly evolution of the accumulated traffic of goods. Tonnes



Monthly evolution of the accumulated traffic of goods. TEU



TRAFFIC INDICATORS

Main indicators	Monthly accumulated				Last 12 months	Total traffic 2025	% 12 months-2025
	2025	2026	Diff. 26-25	%			
Goods indicators by navigation and operation (tonnes)							
Navigation (t)	22.035.664	23.354.873	1.319.208	6,0%	69.005.830	67.686.622	1,9%
Domestic	2.795.480	2.814.994	19.514	0,7%	8.824.097	8.804.583	0,2%
Foreign	19.240.184	20.539.879	1.299.695	6,8%	60.181.734	58.882.039	2,2%
Operation (t)	22.035.664	23.354.873	1.319.208	6,0%	69.005.830	67.686.622	1,9%
Loaded	6.421.151	6.124.182	-296.968	-4,6%	19.469.488	19.766.457	-1,5%
Unloaded	7.753.448	8.255.616	502.168	6,5%	24.560.604	24.058.436	2,1%
Transit	7.861.065	8.975.074	1.114.009	14,2%	24.975.738	23.861.729	4,7%
Goods indicators by main units							
Containers (TEU)	1.232.933	1.266.611	33.679	2,7%	3.762.729	3.729.051	0,9%
TEU O/D	734.082	701.493	-32.589	-4,4%	2.182.744	2.215.333	-1,5%
TEU transit	498.851	565.119	66.268	13,3%	1.579.985	1.513.718	4,4%
Containerized tonnes	12.130.374	12.297.439	167.065	1,4%	35.456.342	35.289.277	0,5%
Level of containerization	76,32%	76,37%			75,08%	75,06%	
Passengers (u)	1.114.302	1.169.616	55.314	5,0%	5.841.013	5.785.699	1,0%
Regular line	360.773	365.470	4.697	1,3%	1.792.955	1.788.258	0,3%
Pleasure cruises	753.529	804.146	50.617	6,7%	4.048.058	3.997.441	1,3%
Automobiles (u)	228.778	244.853	16.075	7,0%	732.755	716.680	2,2%
Loaded	139.995	136.132	-3.863	-2,8%	412.606	416.469	-0,9%
Unloaded	59.648	77.406	17.758	29,8%	222.671	204.913	8,7%
Transit	29.135	31.315	2.180	7,5%	97.478	95.298	2,3%
Vessels (u)	2.499	2.469	-30	-1,2%	8.348	8.378	-0,4%
Number of calls	2.499	2.469	-30	-1,2%	8.348	8.378	-0,4%
Gross Tonnage (GT)	104.961.981	107.171.023	2.209.042	2,1%	379.377.643	377.168.601	0,6%
Average tonnes by vessel	8.818	9.459	641	7,3%	8.266	8.079	2,3%
UTI	136.391	140.251	3.860	2,8%	434.268	430.408	0,9%
Domestic	87.699	88.443	744	0,8%	282.705	281.961	0,3%
% Full	61,7%	62,2%			61,5%	61,3%	
Foreign	48.692	51.808	3.116	6,4%	151.564	148.448	2,1%
% Full	89,5%	91,8%			89,8%	89,0%	

TRAFFIC INDICATORS

Breakdown of total traffic (tonnes)	Monthly accumulated				% 26-25 accum. March	% 26-25 accum. February	% of total accum. 2026
	2025	2026	Diff. 26-25	%			
Goods indicators by type of packaging (t)	22.035.664	23.354.873	1.319.208	6,0%	4,2%	10,5%	100%
Liquid bulk	4.898.837	6.057.966	1.159.129	23,7%	31,4%	40,6%	25,9%
Hydrocarbons	3.745.698	4.303.974	558.276	14,9%	22,3%	25,3%	18,4%
Petrol	1.729.380	1.874.023	144.643	8,4%	5,4%	12,2%	8,0%
Natural gas	883.810	1.274.641	390.830	44,2%	63,1%	88,0%	5,5%
Diesel oils	796.132	797.304	1.172	0,1%	36,0%	42,0%	3,4%
Fuel oil	244.484	197.547	-46.936	-19,2%	-14,4%	-29,5%	0,8%
Other petroleum products	81.823	152.207	70.384	86,0%	-6,3%	-20,3%	0,7%
Remainder	10.069	8.252	-1.817	-18,0%	-21,2%	-26,0%	0,0%
Other liquid bulk	1.153.138	1.753.991	600.853	52,1%	60,0%	84,4%	7,5%
Chemical products	582.759	1.106.344	523.585	89,8%	96,4%	148,5%	4,7%
Biofuel	297.210	389.793	92.583	31,2%	32,4%	22,1%	1,7%
Oils and fats	241.947	254.796	12.849	5,3%	32,0%	43,7%	1,1%
Natural/artificial fertilizer	24.254	3.058	-21.196	-87,4%	-87,4%	-100,0%	0,0%
Other food products	5.664	0	-5.664		-100,0%	0,0%	
Remainder	1.303	0	-1.303				0,0%
Dry bulk	1.243.491	1.194.308	-49.183	-4,0%	-8,6%	15,4%	5,1%
Special installation	1.141.202	1.115.898	-25.304	-2,2%	-8,0%	16,1%	4,8%
Soya bean	437.267	488.821	51.554	11,8%	11,0%	60,5%	2,1%
Cement and clinker	186.414	197.006	10.592	5,7%	-2,6%	13,1%	0,8%
Potashes	131.924	164.802	32.878	24,9%	41,9%	-1,0%	0,7%
Cereals and flours	309.479	162.234	-147.246	-47,6%	-62,1%	-64,2%	0,7%
Common salt	76.118	92.599	16.481	21,7%	46,7%	131,3%	0,4%
Remainder	0	10.437	10.437				0,0%
Without special installation	102.289	78.409	-23.879	-23,3%	-14,9%	5,6%	0,3%
Scrap iron	46.907	46.105	-802	-1,7%	8,3%	2,2%	0,2%
Other non-metallic minerals	37.631	18.850	-18.781	-49,9%	-54,4%		0,1%
Other minerals and metallic waste	9.800	5.500	-4.300	-43,9%	-21,4%	-21,4%	0,0%
Chemical products	7.950	4.000	-3.950	-49,7%	15,9%	15,9%	0,0%
Natural/artificial fertilizer	0	2.454	2.454	0,0%	0,0%	0,0%	0,0%
Remainder	0	1.500	1.500				0,0%
General cargo	15.893.337	16.102.599	209.262	1,3%	-1,9%	3,1%	68,9%
Containerized	12.130.374	12.297.439	167.065	1,4%	-2,3%	5,4%	52,7%
Tare of containers	2.495.472	2.568.874	73.401	2,9%	-1,0%	4,1%	11,0%
Chemical products	2.210.432	2.167.099	-43.333	-2,0%	-9,8%	-4,4%	9,3%
Other cargo by type	1.348.113	1.266.156	-81.957	-6,1%	-6,8%	-5,6%	5,4%
Other food products	1.001.579	1.012.911	11.332	1,1%	-0,4%	23,0%	4,3%
Machinery and spare parts	787.355	827.379	40.024	5,1%	-2,8%	-0,3%	3,5%
Remainder	4.287.423	4.455.021	167.598	3,9%	1,7%	12,0%	19,1%
Non-containerized	3.762.963	3.805.160	42.197	1,1%	-0,6%	-4,8%	16,3%
Tare of platform and wagons (Ro-Ro)	1.337.402	1.383.266	45.863	3,4%	3,4%	-0,0%	5,9%
Other cargo by type	650.792	790.494	139.702	21,5%	14,9%	9,6%	3,4%
Automobiles and parts	385.537	443.144	57.607	14,9%	14,0%	7,5%	1,9%
Machinery and spare parts	403.772	231.318	-172.453	-42,7%	-42,7%	-37,8%	1,0%
Frozen fish	108.886	195.299	86.413	79,4%	88,5%	89,2%	0,8%
Remainder	876.574	761.639	-114.935	-13,1%	-15,9%	-23,6%	3,3%

TRAFFIC INDICATORS

Breakdown of traffic in transit (tonnes)	Monthly accumulated				% 26-25 accum. March	% 26-25 accum. February	% of total accum. 2026
	2025	2026	Diff. 26-25	%			
Goods indicators by type of packaging (t)	7.861.065	8.975.074	1.114.009	14,2%	11,9%	24,3%	100%
Liquid bulk	2.195.621	2.625.144	429.523	19,6%	31,2%	31,7%	29,2%
Hydrocarbons	1.674.223	1.664.355	-9.869	-0,6%	7,6%	-2,8%	18,5%
Petrol	1.269.004	1.213.682	-55.322	-4,4%	-5,8%	6,1%	13,5%
Diesel oils	161.498	233.736	72.239	44,7%	217,9%	-21,0%	2,6%
Fuel oil	239.027	164.043	-74.984	-31,4%	-11,5%	-29,5%	1,8%
Other petroleum products	4.695	52.893	48.198	1026,6%	209,8%	103,0%	0,6%
Remainder	0	0	0				0,0%
Other liquid bulk	521.398	960.789	439.391	84,3%	114,7%	137,9%	10,7%
Chemical products	283.173	717.237	434.064	153,3%	227,0%	309,6%	8,0%
Biofuel	223.479	237.103	13.624	6,1%	4,3%	-4,6%	2,6%
Oils and fats	14.745	6.448	-8.297	-56,3%	42,5%	38,4%	0,1%
Remainder	0	0	0				0,0%
Dry bulk	0	0	0				0,0%
Special installation	0	0	0				0,0%
Remainder	0	0	0				0,0%
Without special installation	0	0	0				0,0%
Remainder	0	0	0				0,0%
General cargo	5.665.444	6.349.931	684.486	12,1%	5,9%	22,1%	70,8%
Containerized	5.448.415	6.107.471	659.056	12,1%	5,4%	22,2%	68,0%
Tare of containers	1.009.043	1.151.473	142.430	14,1%	6,7%	20,3%	12,8%
Chemical products	969.029	1.017.985	48.955	5,1%	-11,1%	0,1%	11,3%
Other food products	544.841	639.487	94.647	17,4%	13,8%	50,0%	7,1%
Other cargo by type	598.944	562.443	-36.501	-6,1%	-8,8%	-1,5%	6,3%
Other construction materials	394.647	420.833	26.186	6,6%	6,3%	17,6%	4,7%
Remainder	1.931.910	2.315.249	383.339	19,8%	15,0%	36,6%	25,8%
Non-containerized	217.030	242.460	25.430	11,7%	19,0%	18,9%	2,7%
Automobiles and parts	57.201	66.974	9.773	17,1%	16,9%	9,1%	0,7%
Tare of platform and wagons (Ro-Ro)	39.741	39.893	152	0,4%	9,2%	16,1%	0,4%
Other cargo by type	34.622	34.111	-511	-1,5%	7,9%	21,5%	0,4%
Oils and fats	12.087	33.196	21.109	174,6%	212,8%	131,0%	0,4%
Wines, beverages, spirits and derivatives	18.409	16.716	-1.693	-9,2%	-0,9%	16,3%	0,2%
Remainder	54.970	51.571	-3.400	-6,2%	-4,1%	5,7%	0,6%

TRAFFIC INDICATORS

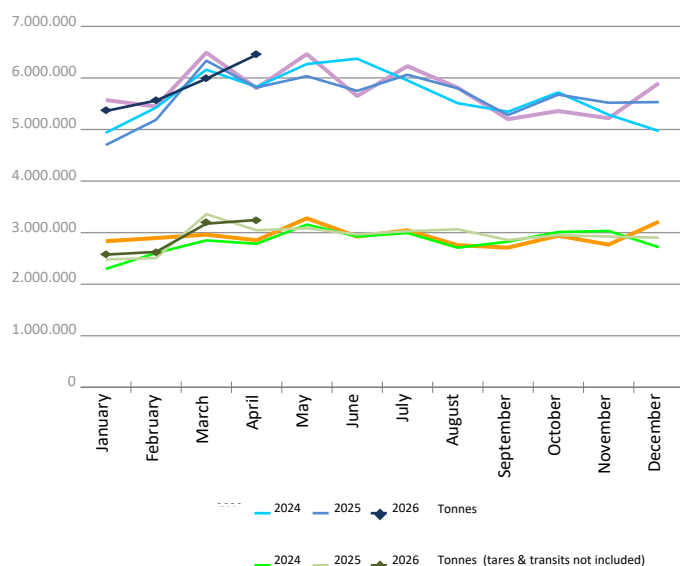
Monthly evolution of traffic. Tonnes

Monthly evolution of traffic	Total tonnes			%		Tonnes (tares & transits not included)			%	
	2025	2026	Diff. 26-25	Monthly	Accumulated	2025	2026	Diff. 26-25	Monthly	Accumulated
January	4.698.525	5.358.956	660.431	14,1%	14,1%	2.480.314	2.573.192	92.878	3,7%	3,7%
February	5.187.251	5.560.817	373.566	7,2%	10,5%	2.506.128	2.626.297	120.169	4,8%	4,3%
March	6.335.288	5.985.282	-350.007	-5,5%	4,2%	3.358.082	3.174.002	-184.081	-5,5%	0,3%
April	5.814.600	6.449.818	635.218	10,9%	6,0%	3.045.985	3.245.536	199.551	6,6%	2,0%
May	6.034.313					3.084.496				
June	5.748.936					2.965.972				
July	6.062.007					3.028.262				
August	5.797.704					3.065.150				
September	5.280.189					2.856.506				
October	5.676.332					2.951.106				
November	5.519.207					2.923.806				
December	5.532.270					2.901.823				
Total	67.686.622	23.354.873				35.167.631	11.619.026			

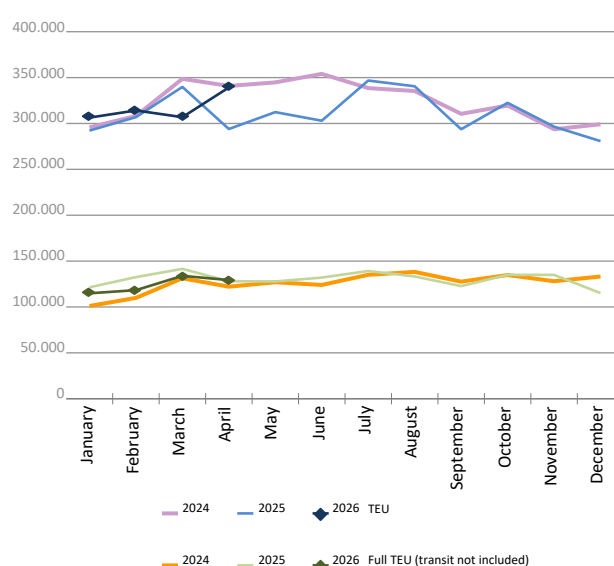
Monthly evolution of traffic. TEU

Monthly evolution of traffic	Total TEU			%		Full TEU (transit not included)			%	
	2025	2026	Diff. 26-25	Monthly	Accumulated	2025	2026	Diff. 26-25	Monthly	Accumulated
January	292.214	306.369	14.155	4,8%	4,8%	121.427	114.902	-6.526	-5,4%	-5,4%
February	306.907	314.170	7.263	2,4%	3,6%	132.547	118.335	-14.213	-10,7%	-8,2%
March	339.868	306.865	-33.004	-9,7%	-1,2%	141.546	133.893	-7.654	-5,4%	-7,2%
April	293.945	339.209	45.264	15,4%	2,7%	128.018	129.330	1.313	1,0%	-5,2%
May	312.362					127.830				
June	302.973					132.015				
July	346.795					139.211				
August	340.507					133.270				
September	293.712					122.768				
October	322.489					135.042				
November	296.513					134.989				
December	280.769					115.128				
Total	3.729.051	1.266.611				1.563.788	496.459			

Goods (total tonnes)



Containers (total TEU)



CONTAINER TRAFFIC

TEU evolution

Full-unloaded foreign	Full TEU			%		Full-loaded foreign	Full TEU			%	
	2025	2026	Diff. 26-25	Monthly	Accumulated		2025	2026	Diff. 26-25	Monthly	Accumulated
January	58.514	57.200	-1.314	-2,2%	-2,2%	January	53.689	48.253	-5.436	-10,1%	-10,1%
February	59.518	55.909	-3.609	-6,1%	-4,2%	February	62.193	53.045	-9.148	-14,7%	-12,6%
March	58.039	68.671	10.632	18,3%	3,2%	March	72.524	54.541	-17.983	-24,8%	-17,3%
April	59.383	60.692	1.309	2,2%	3,0%	April	58.847	57.888	-960	-1,6%	-13,6%
May	60.421					May	56.575				
June	60.504					June	61.306				
July	68.511					July	59.793				
August	60.236					August	62.780				
September	60.013					September	52.677				
October	61.678					October	62.151				
November	60.269					November	65.105				
December	52.554					December	54.073				
Total	719.636	242.471				Total	721.710	213.726			

Full-unloaded domestic	Full TEU			%		Full-loaded domestic	Full TEU			%	
	2025	2026	Diff. 26-25	Monthly	Accumulated		2025	2026	Diff. 26-25	Monthly	Accumulated
January	2.226	2.016	-210	-9,4%	-9,4%	January	7.000	7.433	433	6,2%	6,2%
February	2.523	1.973	-550	-21,8%	-16,0%	February	8.315	7.408	-907	-10,9%	-3,1%
March	2.522	2.343	-180	-7,1%	-12,9%	March	8.462	8.339	-124	-1,5%	-2,5%
April	2.426	2.428	3	0,1%	-9,7%	April	7.362	8.323	961	13,1%	1,2%
May	2.198					May	8.636				
June	2.380					June	7.826				
July	2.380					July	8.527				
August	2.069					August	8.186				
September	1.970					September	8.110				
October	2.400					October	8.814				
November	1.833					November	7.783				
December	1.984					December	6.517				
Total	26.907	8.760				Total	95.536	31.502			

Full - Transit	Full TEU			%		Empty	Empty TEU			%	
	2025	2026	Diff. 26-25	Monthly	Accumulated		2025	2026	Diff. 26-25	Monthly	Accumulated
January	100.847	106.010	5.163	5,1%	5,1%	January	69.940	85.458	15.518	22,2%	22,2%
February	100.796	123.265	22.469	22,3%	13,7%	February	73.564	72.571	-993	-1,3%	10,1%
March	117.424	84.790	-32.634	-27,8%	-1,6%	March	80.899	88.183	7.284	9,0%	9,7%
April	82.980	110.044	27.064	32,6%	5,5%	April	82.947	99.835	16.888	20,4%	12,6%
May	84.081					May	100.452				
June	76.145					June	94.813				
July	96.391					July	111.193				
August	96.112					August	111.126				
September	74.854					September	96.089				
October	74.530					October	112.918				
November	77.072					November	84.453				
December	93.174					December	72.468				
Total	1.074.404	424.107				Total	1.090.859	346.046			

CONTAINER TRAFFIC

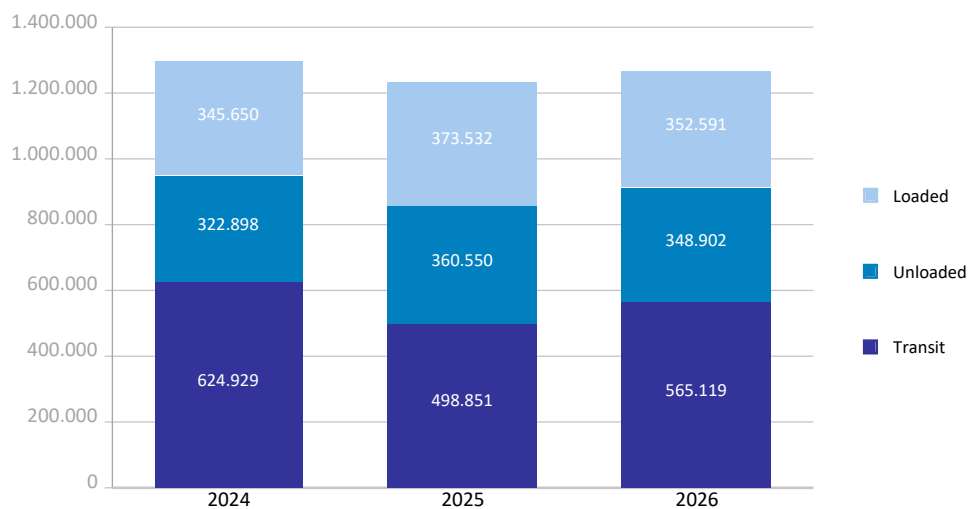
TEU

Container traffic	Monthly accumulated 2025			Monthly accumulated 2026			%
	Domestic	Foreign	Total	Domestic	Foreign	Total	
Total traffic	74.261	1.158.672	1.232.933	73.389	1.193.222	1.266.611	2,7%
Unloaded	39.447	585.731	625.178	37.475	602.126	639.601	2,3%
Roll On-Roll Off	6.581	1.817	8.398	6.226	1.495	7.721	-8,1%
Lift On-Lift Off	32.866	583.914	616.780	31.249	600.631	631.880	2,4%
Loaded	34.814	572.941	607.755	35.914	591.097	627.011	3,2%
Roll On-Roll Off	7.091	1.859	8.950	6.540	1.660	8.200	-8,4%
Lift On-Lift Off	27.723	571.082	598.805	29.375	589.437	618.811	3,3%

Breakdown by navigation and operation	Monthly accumulated 2025			Monthly accumulated 2026			%
	Domestic	Foreign	Total	Domestic	Foreign	Total	
Loaded	34.794	338.739	373.532	35.898	316.693	352.591	-5,6%
Full	31.138	247.252	278.390	31.502	213.726	245.228	-11,9%
Empty	3.656	91.487	95.143	4.396	102.967	107.363	12,8%
Unloaded	38.949	321.601	360.550	36.673	312.229	348.902	-3,2%
Full	9.696	235.453	245.148	8.760	242.471	251.231	2,5%
Empty	29.253	86.149	115.402	27.914	69.758	97.672	-15,4%
Transit	519	498.333	498.851	818	564.301	565.119	13,3%
Full	12	402.035	402.047	158	423.949	424.107	5,5%
Empty	507	96.298	96.805	660	140.352	141.012	45,7%

Total traffic	74.261	1.158.672	1.232.933	73.389	1.193.222	1.266.611	2,7%
Full	40.846	884.739	925.584	40.420	880.146	920.566	-0,5%
Empty	33.415	273.934	307.349	32.970	313.076	346.046	12,6%
% Empty	45,0%	23,6%	24,9%	44,9%	26,2%	27,3%	
% Transit	0,7%	43,0%	40,5%	1,1%	47,3%	44,6%	

General cargo distribution by operation (TEU)

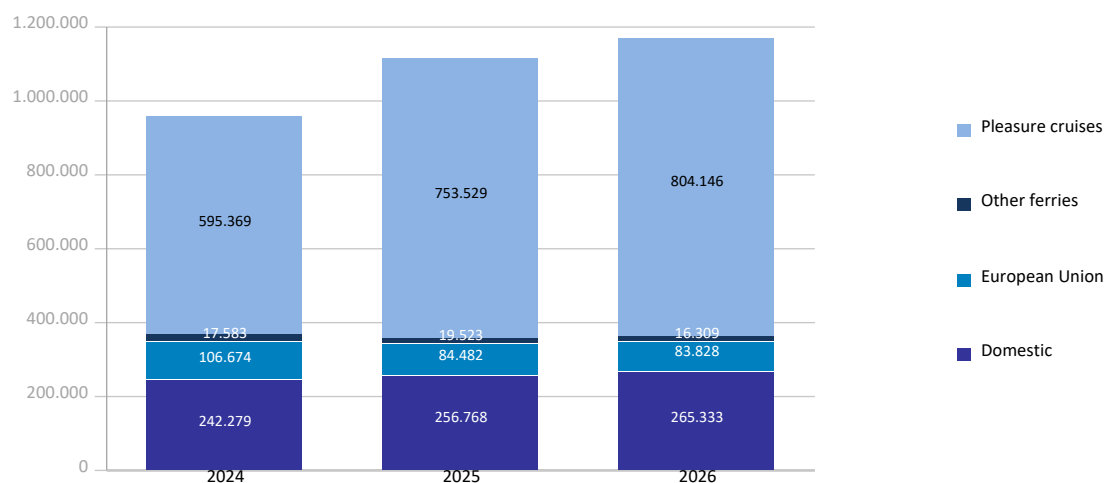


PASSENGER TRAFFIC

Total passenger traffic (units)	Monthly accumulated				% 26-25 accum. March	% 26-25 accum. February
	2025	2026	Diff. 26-25	%		
Total passengers	1.114.302	1.169.616	55.314	5,0%	24,1%	15,5%
Embarkation	391.073	403.222	12.149	3,1%	20,3%	10,8%
Disembarkation	360.803	380.322	19.519	5,4%	19,3%	13,1%
Transit	362.426	386.072	23.646	6,5%	34,0%	23,8%
Regular line ferries	360.773	365.470	4.697	1,3%	9,6%	5,1%
Embarkation	193.888	196.674	2.786	1,4%	11,2%	1,4%
Disembarkation	166.885	168.796	1.911	1,1%	7,7%	9,3%
Domestic	256.768	265.333	8.565	3,3%	11,0%	5,7%
Embarkation	143.895	147.986	4.091	2,8%	12,3%	2,2%
Disembarkation	112.873	117.347	4.474	4,0%	9,3%	9,8%
European Union	84.482	83.828	-654	-0,8%	11,7%	19,7%
Embarkation	39.600	39.590	-10	-0,0%	13,8%	16,8%
Disembarkation	44.882	44.238	-644	-1,4%	9,8%	22,3%
Other ferries	19.523	16.309	-3.214	-16,5%	-14,7%	-25,5%
Embarkation	10.393	9.098	-1.295	-12,5%	-10,7%	-31,3%
Disembarkation	9.130	7.211	-1.919	-21,0%	-19,1%	-19,4%
Pleasure cruises	753.529	804.146	50.617	6,7%	32,9%	21,9%
Embarkation	197.185	206.548	9.363	4,7%	32,1%	23,4%
Disembarkation	193.918	211.526	17.608	9,1%	31,6%	17,1%
Transit	362.426	386.072	23.646	6,5%	34,0%	23,8%
Barcelona cruise visitors *	466.980	497.971	30.991	6,64%	33,37%	22,72%
Automobile passengers	110.239	113.103	2.864	2,6%	8,3%	3,7%

Total passenger calls (units)	Monthly accumulated				% 26-25 accum. March	% 26-25 accum. February
	2025	2026	Diff. 26-25	%		
Total number of calls	1.124	1.068	-56	-5,0%	-4,2%	-5,7%
Regular Line ferries	948	878	-70	-7,4%	-9,1%	-9,0%
Pleasure cruises	176	190	14	8,0%	41,3%	27,9%

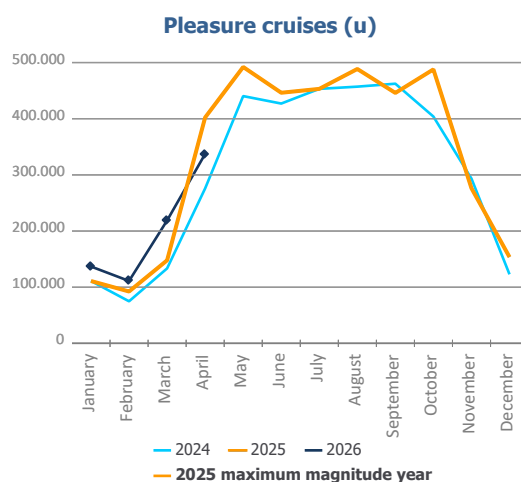
Passenger traffic distribution (u)



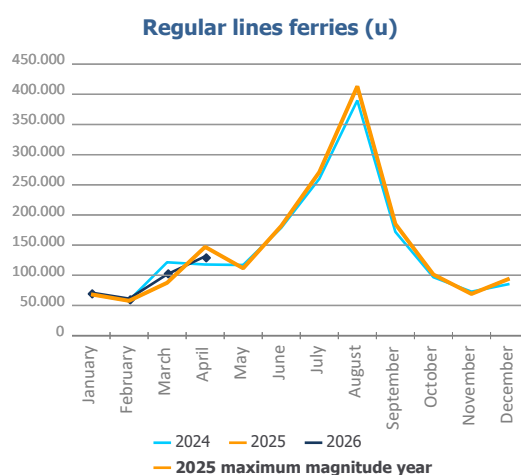
* The Port of Barcelona's statistics reflect cruise ship movements in accordance with international accounting standards. However, these figures do not show the actual number of cruise passengers arriving in the city. To address this, a new calculation system, developed in collaboration with Turisme de Barcelona, homogenizes the cruise passenger data reported by the Port with that provided by the city.

PASSENGER CLASSIFICATION

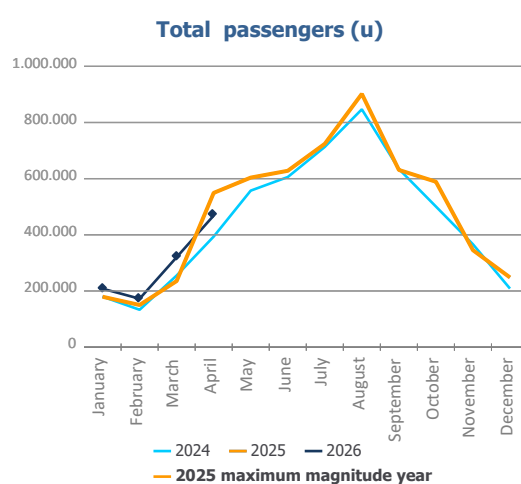
Monthly evolution of passenger traffic	Pleasure cruises			%	
	2025	2026	Diff. 26-25	Monthly	Accumulated
January	111.054	136.856	25.802	23,2%	23,2%
February	92.360	111.147	18.787	20,3%	21,9%
March	147.890	218.826	70.936	48,0%	32,9%
April	402.225	337.317	-64.908	-16,1%	6,7%
May	492.158				
June	446.267				
July	453.131				
August	488.584				
September	445.948				
October	487.841				
November	276.291				
December	153.692				
Total	3.997.441	804.146			



Monthly evolution of passenger traffic	Regular lines ferries			%	
	2025	2026	Diff. 26-25	Monthly	Accumulated
January	68.438	71.304	2.866	4,2%	4,2%
February	57.696	61.300	3.604	6,2%	5,1%
March	87.560	101.548	13.988	16,0%	9,6%
April	147.079	131.318	-15.761	-10,7%	1,3%
May	111.618				
June	181.775				
July	270.921				
August	413.279				
September	185.106				
October	101.232				
November	69.085				
December	94.469				
Total	1.788.258	365.470			



Monthly evolution of passenger traffic	Total passengers			%	
	2025	2026	Diff. 26-25	Monthly	Accumulated
January	179.492	208.160	28.668	16,0%	16,0%
February	150.056	172.447	22.391	14,9%	15,5%
March	235.450	320.374	84.924	36,1%	24,1%
April	549.304	468.635	-80.669	-14,7%	5,0%
May	603.776				
June	628.042				
July	724.052				
August	901.863				
September	631.054				
October	589.073				
November	345.376				
December	248.161				
Total	5.785.699	1.169.616			

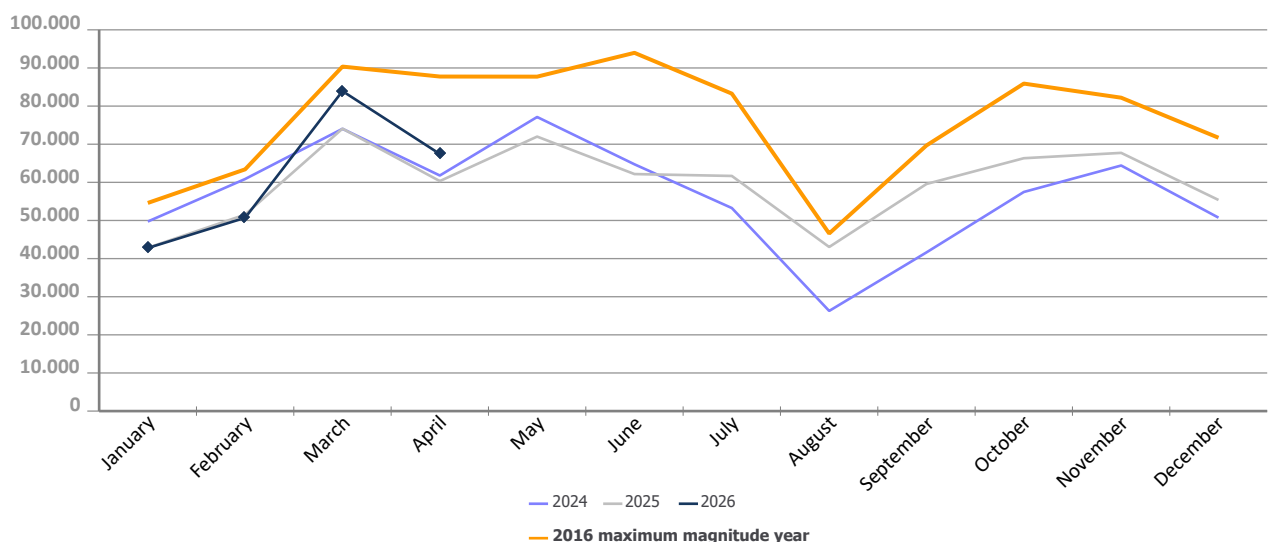


AUTOMOBILE TRAFFIC

Total automobile traffic (units)	Monthly accumulated				% 26-25 accum. March	% 26-25 accum. February
	2025	2026	Diff. 26-25	%		
Automobile traffic by navigation and operation	228.778	244.853	16.075	7,0%	5,3%	-0,9%
Domestic	41.503	33.479	-8.024	-19,3%	-20,7%	-16,8%
Loaded	37.972	32.132	-5.840	-15,4%	-17,6%	-12,3%
Unloaded	3.507	1.347	-2.160	-61,6%	-53,2%	-54,3%
Transit	24	0	-24			
Foreign	187.275	211.374	24.099	12,9%	10,7%	1,6%
Loaded	102.023	104.000	1.977	1,9%	-1,6%	-2,9%
Unloaded	56.141	76.059	19.918	35,5%	37,3%	19,1%
Transit	29.111	31.315	2.204	7,6%	3,8%	-9,4%
Electric or Hybrid Automobile Traffic	24.223	43.580	19.357	79,9%	91,7%	30,9%
% of the total automobiles	10,59%	17,80%				
Domestic	541	751	210	38,8%	-20,4%	-33,4%
Loaded	402	709	307	76,4%	-0,5%	-13,5%
Unloaded	139	42	-97	-69,8%	-77,7%	-81,0%
Transit						
Foreign	23.682	42.829	19.147	80,9%	95,5%	33,2%
Loaded	12.626	6.657	-5.969	-47,3%	-36,9%	-58,9%
Unloaded	7.583	35.685	28.102	370,6%	481,8%	489,6%
Transit	3.473	487	-2.986	-86,0%	-92,9%	-89,3%

Monthly automobile traffic (u)	Monthly		Accumulated		%	
	2025	2026	2025	2026	Monthly	Accumulated
January	42.823	42.779	42.823	42.779	-0,1%	-0,1%
February	51.536	50.704	94.359	93.483	-1,6%	-0,9%
March	74.087	83.926	168.446	177.409	13,3%	5,3%
April	60.332	67.444	228.778	244.853	11,8%	7,0%
May	72.003		300.781			
June	62.171		362.952			
July	61.677		424.629			
August	43.044		467.673			
September	59.574		527.247			
October	66.326		593.573			
November	67.730		661.303			
December	55.377		716.680			

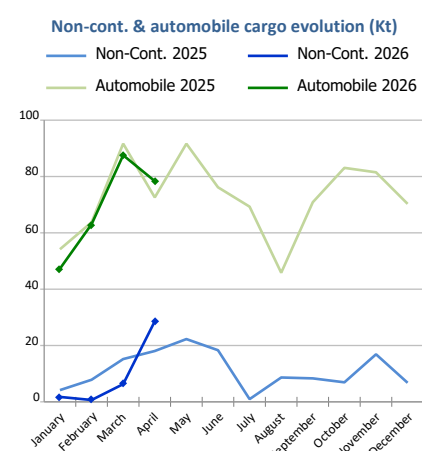
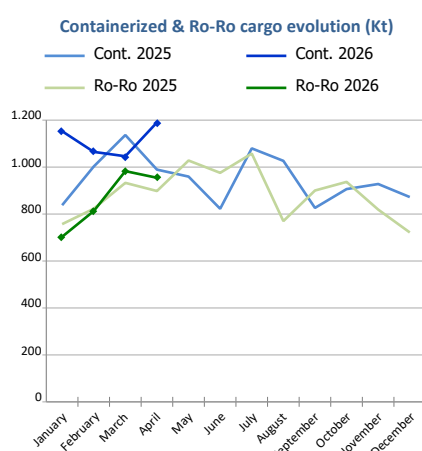
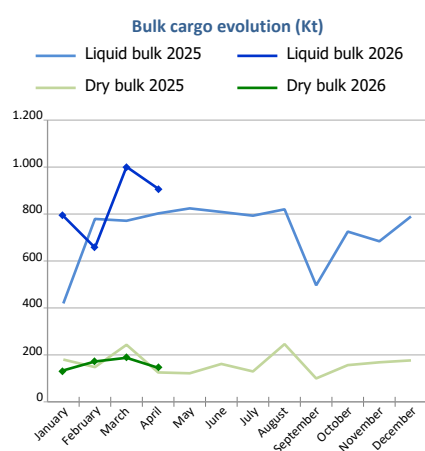
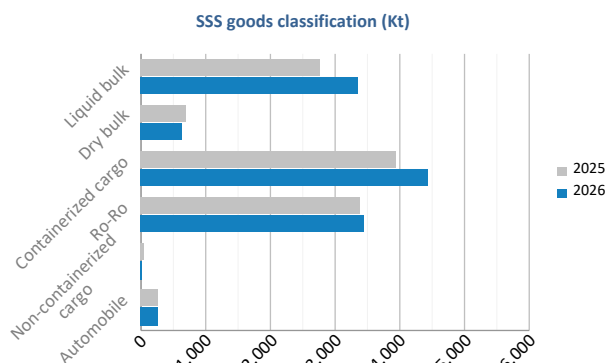
Evolution of monthly automobile traffic (u)



SHORT SEA SHIPPING (SSS)

SSS Goods classification

Goods classification. Tonnes	Monthly accumulated		%	% of total port traffic
	2025	2026		
Liquid bulk	2.772.176	3.358.052	21,1%	55,4%
Dry bulk	695.992	638.069	-8,3%	53,4%
Containerized cargo	3.966.573	4.454.533	12,3%	36,6%
Ro-Ro	3.411.066	3.453.537	1,2%	100,0%
Non-containerized cargo	45.240	37.278	-17,6%	45,7%
Automobile	282.164	276.281	-2,1%	72,4%
Total	11.173.212	12.217.749	9,3%	52,3%



SSS General Cargo	Spanish Islands			SSS Remainder			TOTAL		
	2025	2026	%	2025	2026	%	2025	2026	%
Containerized cargo	340.461	347.980	2,2%	3.626.113	4.106.553	13,2%	3.966.573	4.454.533	12,3%
O/D	326.599	337.564	3,4%	1.160.531	1.150.660	-0,9%	1.487.130	1.488.224	0,1%
Transit	13.862	10.416	-24,9%	2.465.582	2.955.893	19,9%	2.479.444	2.966.309	19,6%
Ro-Ro	2.005.651	1.899.287	-5,3%	1.405.415	1.554.249	10,6%	3.411.066	3.453.537	1,2%
O/D	2.005.651	1.899.287	-5,3%	1.223.651	1.358.689	11,0%	3.229.301	3.257.976	0,9%
Transit	0	0	0,0%	181.764	195.561	7,6%	181.764	195.561	7,6%
Non-cont. cargo	424	442	4,2%	44.815	36.835	-17,8%	45.240	37.278	-17,6%
O/D	424	442	4,2%	42.855	36.206	-15,5%	43.279	36.648	-15,3%
Transit	0	0	0,0%	1.961	630	-67,9%	1.961	630	-67,9%
Automobile	69.245	52.430	-24,3%	212.919	223.851	5,1%	282.164	276.281	-2,1%
O/D	69.243	52.428	-24,3%	176.325	180.517	2,4%	245.568	232.945	-5,1%
Transit	2	2	0,9%	36.595	43.334	18,4%	36.597	43.336	18,4%



Short Sea Shipping (SSS):

The transport of cargo/goods and passengers between ports situated in the European Union or between these ports and non-European ports with a coastline in seas bordering Europe. This applies to cargo either originating from or is destined for these countries (in accordance with the European Shortsea Network).

Motorways of the sea (MoS):

Short Sea Shipping services as an alternative to road transport and which fulfill the following criteria: minimum frequency of 3 calls per week and calling at a maximum of 3 different ports.

General cargo:

Including containerized cargo, non-containerized cargo, Ro-Ro and automobiles.

Containerized cargo:

Excluding container cargo by Ro-Ro.

Non-containerized cargo:

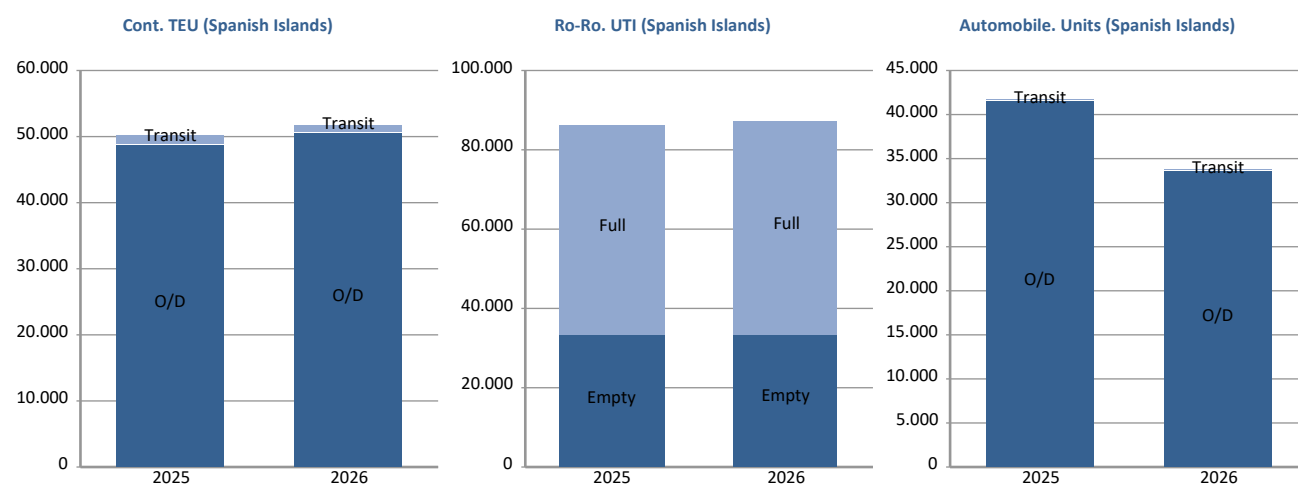
General non-containerized goods other than Ro-Ro and excluding automobiles.

Ro-Ro:

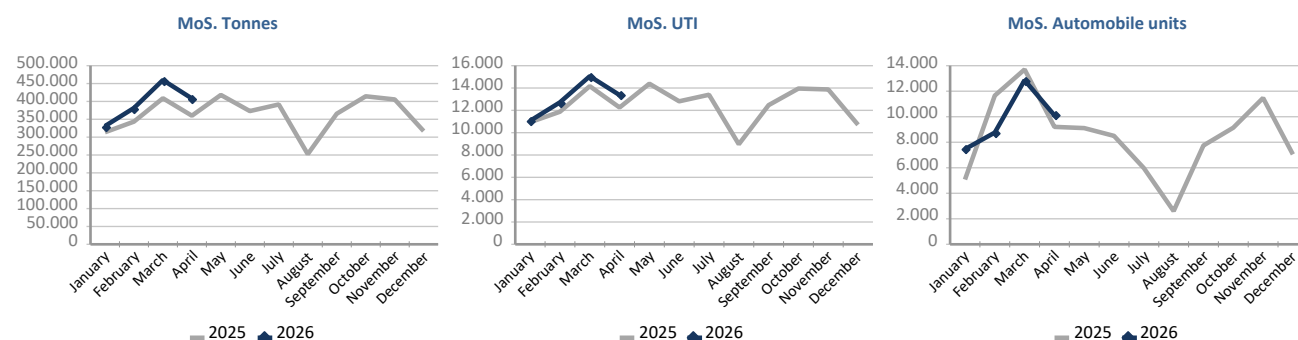
General cargo carried in UTI's. Excluding automobiles.

SHORT SEA SHIPPING (SSS)

SSS General cargo	Spanish Islands			SSS Remainder			TOTAL		
	2025	2026	%	2025	2026	%	2025	2026	%
Containerized cargo. TEU	50.319	51.776	2,9%	350.408	397.945	13,6%	400.726	449.721	12,2%
O/D	48.641	50.482	3,8%	139.800	147.086	5,2%	188.441	197.568	4,8%
Full	32.326	32.872	1,7%	78.108	79.008	1,2%	110.433	111.880	1,3%
Empty	16.316	17.610	7,9%	61.692	68.079	10,4%	78.008	85.688	9,8%
Transit	1.678	1.295	-22,8%	210.608	250.859	19,1%	212.286	252.153	18,8%
Full	1.256	715	-43,1%	187.144	210.200	12,3%	188.400	210.915	12,0%
Empty	422	580	37,3%	23.464	40.659	73,3%	23.886	41.239	72,6%
Ro-Ro. UTI	86.012	87.140	1,3%	50.378	53.108	5,4%	136.390	140.248	2,8%
Full	53.022	53.967	1,8%	44.709	48.659	8,8%	97.731	102.626	5,0%
Empty	32.990	33.173	0,6%	5.669	4.449	-21,5%	38.659	37.622	-2,7%
Automobile units	41.477	33.463	-19,3%	142.969	148.798	4,1%	184.446	182.261	-1,2%
O/D	41.476	33.462	-19,3%	118.889	124.146	4,4%	160.365	157.608	-1,7%
Transit	1	1	0,0%	24.080	24.652	2,4%	24.081	24.653	2,4%



Motorways of the Sea (MoS)	2025	EU		2025	Non-EU		2025	TOTAL	
		2026	%		2026	%		2026	%
Tonnes	1.422.728	1.576.462	10,8%	3.301	4.094	24,0%	1.426.029	1.580.557	10,8%
Loaded	764.959	870.468	13,8%	3.263	4.044	23,9%	768.222	874.512	13,8%
Unloaded	657.768	705.995	7,3%	38	50	31,5%	657.807	706.045	7,3%
UTI	49.129	52.037	5,9%	108	169	56,5%	49.237	52.206	6,0%
Loaded	25.123	27.121	8,0%	106	166	56,6%	25.229	27.287	8,2%
Unloaded	24.006	24.916	3,8%	2	3	50,0%	24.008	24.919	3,8%
Automobile units	39.550	39.115	-1,1%	94	82	-12,8%	39.644	39.197	-1,1%
Loaded	37.590	37.985	1,1%	94	82	-12,8%	37.684	38.067	1,0%
Unloaded	1.960	1.130	-42,3%	0	0		1.960	1.130	-42,3%



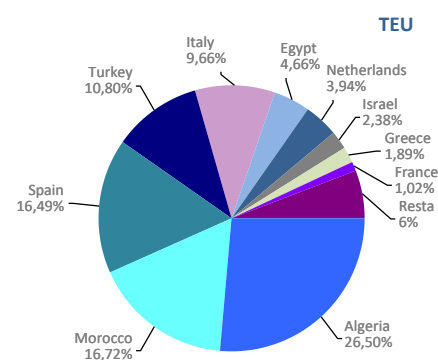
UTI: All those means of unitization, self-propelled or otherwise, that are directly or indirectly used as a means of land transport (e.g. trailers, platforms, trucks, freezer trucks, etc.) are considered as UTI. Containers are not considered to be included, except those that are handled by an equipment transport of the own terminal.

SHORT SEA SHIPPING (SSS)

SSS Ranking countries by mode of packaging

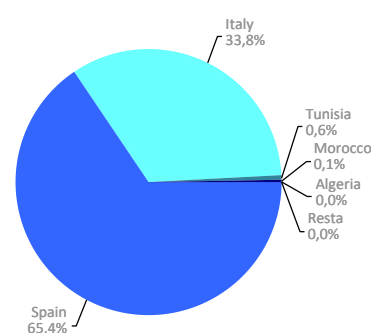
Containerized cargo. TEU	Monthly accumulated				% of total 2026
	2025	2026	Diff. 26-25	%	
Total	400.726	449.721	48.995	12,2%	100%
Algeria	72.531	119.157	46.627	64,3%	26,5%
Morocco	37.107	75.214	38.107	102,7%	16,7%
Spain	69.327	74.177	4.850	7,0%	16,5%
Turkey	44.205	48.582	4.377	9,9%	10,8%
Italy	45.894	43.450	-2.445	-5,3%	9,7%
Egypt	19.097	20.961	1.865	9,8%	4,7%
Netherlands	24.090	17.740	-6.351	-26,4%	3,9%
Israel	17.297	10.689	-6.608	-38,2%	2,4%
Greece	14.722	8.484	-6.238	-42,4%	1,9%
France	26.058	4.603	-21.455	-82,3%	1,0%
Remainder	30.399	26.666	-3.734	-12,3%	5,9%

Main countries



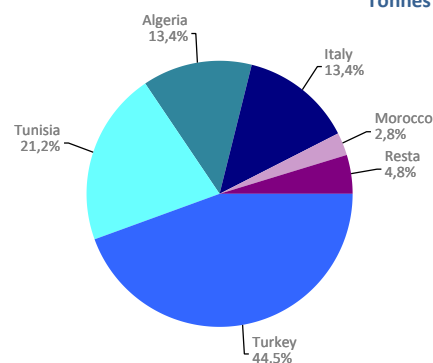
Ro-Ro. UTI	Monthly accumulated				% of total 2026
	2025	2026	Diff. 26-25	%	
Total	136.390	140.248	3.858	2,8%	100%
Spain	90.978	91.757	779	0,9%	65,4%
Italy	44.163	47.420	3.257	7,4%	33,8%
Tunisia	1.073	843	-230	-21,4%	0,6%
Morocco	108	169	61	56,5%	0,1%
Algeria	68	58	-10	-14,7%	0,0%
Remainder	0	1	1	0,0%	0,0%

UTI



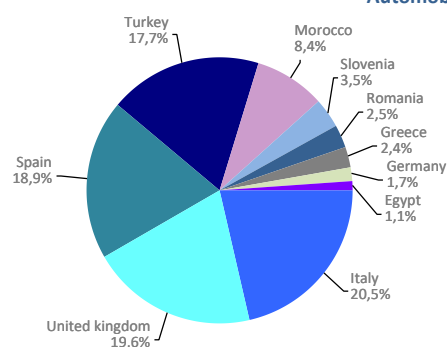
Non-cont. cargo. Tonnes	Monthly accumulated				% of total 2026
	2025	2026	Diff. 26-25	%	
Total	45.240	37.278	-7.962	-17,6%	100%
Turkey	7.562	16.575	9.012	119,2%	44,5%
Tunisia	8.202	7.900	-303	-3,7%	21,2%
Algeria	3.074	4.980	1.906	62,0%	13,4%
Italy	17.473	4.980	-12.493	-71,5%	13,4%
Morocco	2.897	1.038	-1.859	-64,2%	2,8%
Remainder	6.032	1.806	-4.226	-70,1%	4,8%

Tonnes



Automobile. Units	Monthly accumulated				% of total 2026
	2025	2026	Diff. 26-25	%	
Total	184.446	182.261	-2.185	-1,2%	100%
Italy	37.518	37.418	-100	-0,3%	20,5%
United kingdom	29.778	35.676	5.898	19,8%	19,6%
Spain	46.049	34.504	-11.545	-25,1%	18,9%
Turkey	32.957	32.333	-624	-1,9%	17,7%
Morocco	9.852	15.274	5.422	55,0%	8,4%
Slovenia	6.375	6.438	63	1,0%	3,5%
Romania	3.949	4.601	652	16,5%	2,5%
Greece	5.014	4.379	-635	-12,7%	2,4%
Germany	5.875	3.053	-2.822	-48,0%	1,7%
Egypt	1.641	2.070	429	26,1%	1,1%
Remainder	5.438	6.515	1.077	19,8%	3,6%

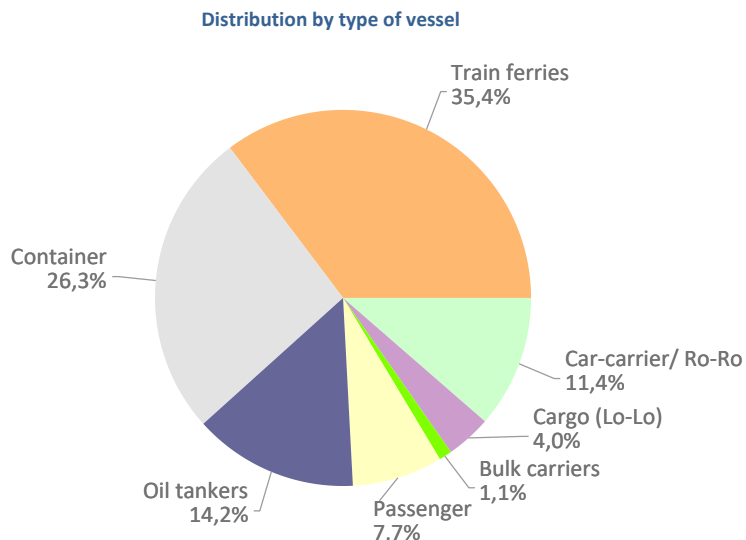
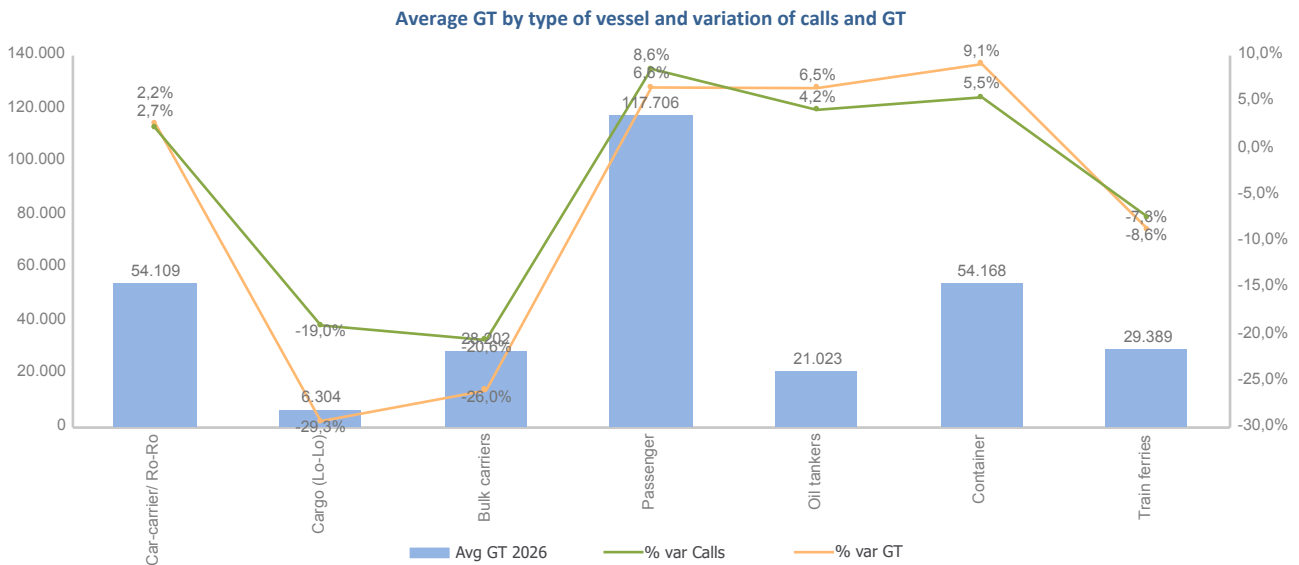
Automobile



VESSELS TRAFFIC

Vessels traffic	Monthly accumulated		
	2025	2026	%
Number of calls	2.499	2.469	-1,2%
Gross Tonnage (GT)	104.961.981	107.171.023	2,1%
Average Gross Tonnage	42.002	43.407	3,3%

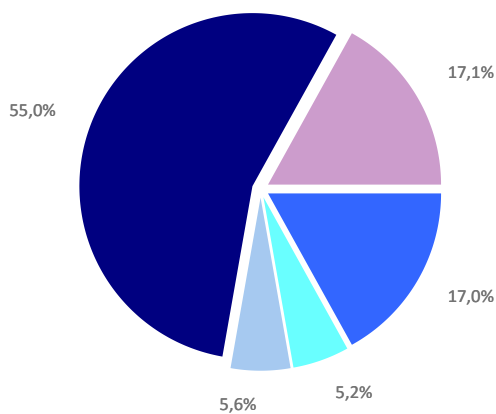
Type of vessels	Monthly accumulated						Avg GT	
	2025		2026		%		2025	2026
	Calls	GT	Calls	GT	Calls	GT		
Total	2.499	104.961.981	2.469	107.171.023	-1,2%	2,1%	42.002	43.407
Car-carrier/ Ro-Ro	275	14.811.262	281	15.204.540	2,2%	2,7%	53.859	54.109
Cargo (Lo-Lo)	121	873.964	98	617.786	-19,0%	-29,3%	7.223	6.304
Bulk carriers	34	1.029.226	27	761.442	-20,6%	-26,0%	30.271	28.202
Passenger	175	20.984.460	190	22.364.225	8,6%	6,6%	119.911	117.706
Oil tankers	336	6.908.827	350	7.357.971	4,2%	6,5%	20.562	21.023
Container	616	32.276.939	650	35.208.890	5,5%	9,1%	52.398	54.168
Train ferries	942	28.077.303	873	25.656.169	-7,3%	-8,6%	29.806	29.389



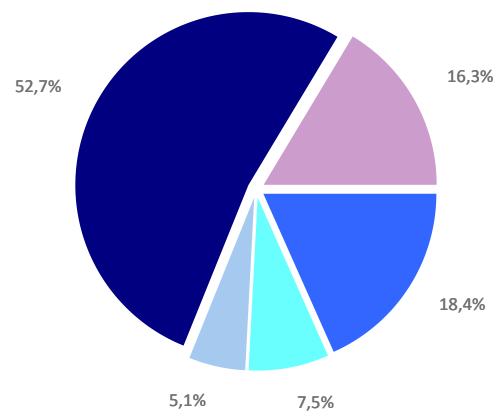
GOODS TRAFFIC

Type of packaging and navigation	Monthly accumulated 2025			Monthly accumulated 2026			%
	Domestic	Foreign	Total	Domestic	Foreign	Total	
Hydrocarbons	186.751	3.558.947	3.745.698	304.287	3.999.687	4.303.974	14,9%
Incoming	158.585	2.912.602	3.071.187	293.704	3.060.925	3.354.630	9,2%
Outgoing	28.166	646.345	674.511	10.583	938.761	949.345	40,7%
Other liquid bulk	88.250	1.064.888	1.153.138	93.839	1.660.153	1.753.991	52,1%
Incoming	72.705	874.739	947.444	81.948	1.090.004	1.171.952	23,7%
Outgoing	15.545	190.150	205.694	11.891	570.149	582.040	183,0%
Dry bulk	36.562	1.206.929	1.243.491	60.621	1.133.687	1.194.308	-4,0%
Incoming	32.586	807.062	839.648	36.358	697.919	734.277	-12,5%
Outgoing	3.976	399.867	403.843	24.263	435.768	460.031	13,9%
Containerized cargo	462.412	11.667.962	12.130.374	448.907	11.848.533	12.297.439	1,4%
Incoming	156.782	5.570.345	5.727.127	144.325	5.819.506	5.963.832	4,1%
Outgoing	305.631	6.097.617	6.403.247	304.582	6.029.026	6.333.608	-1,1%
Non-containerized cargo	2.021.505	1.741.458	3.762.963	1.907.340	1.897.820	3.805.160	1,1%
Incoming	634.358	862.961	1.497.320	625.042	913.093	1.538.135	2,7%
Outgoing	1.387.147	878.496	2.265.643	1.282.298	984.727	2.267.025	0,1%
Total general cargo	2.483.917	13.409.419	15.893.337	2.356.247	13.746.353	16.102.599	1,3%
Incoming	791.140	6.433.307	7.224.446	769.367	6.732.599	7.501.966	3,8%
Outgoing	1.692.778	6.976.113	8.668.890	1.586.879	7.013.754	8.600.633	-0,8%
Total throughput (tonnes)	2.795.480	19.240.184	22.035.664	2.814.994	20.539.879	23.354.873	6,0%
Incoming	1.055.016	11.027.709	12.082.725	1.181.378	11.581.447	12.762.824	5,6%
Outgoing	1.740.464	8.212.475	9.952.939	1.633.616	8.958.432	10.592.048	6,4%
Container traffic (TEU)	74.261	1.158.672	1.232.933	73.389	1.193.222	1.266.611	2,7%
Incoming	39.447	585.731	625.178	37.475	602.126	639.601	2,3%
Outgoing	34.814	572.941	607.755	35.914	591.097	627.011	3,2%

Distribution by type of packaging 2025

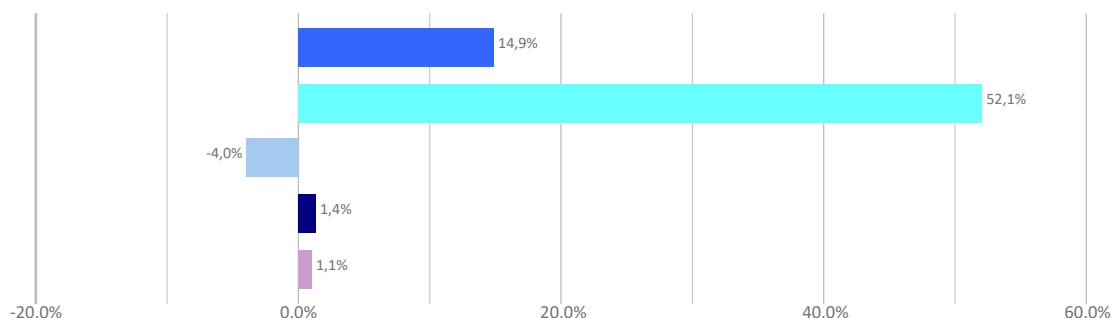


Distribution by type of packaging 2026



Hydrocarbons Liquid bulk Dry bulk Containerized cargo Non Containerized cargo

Annual growth by type of packaging



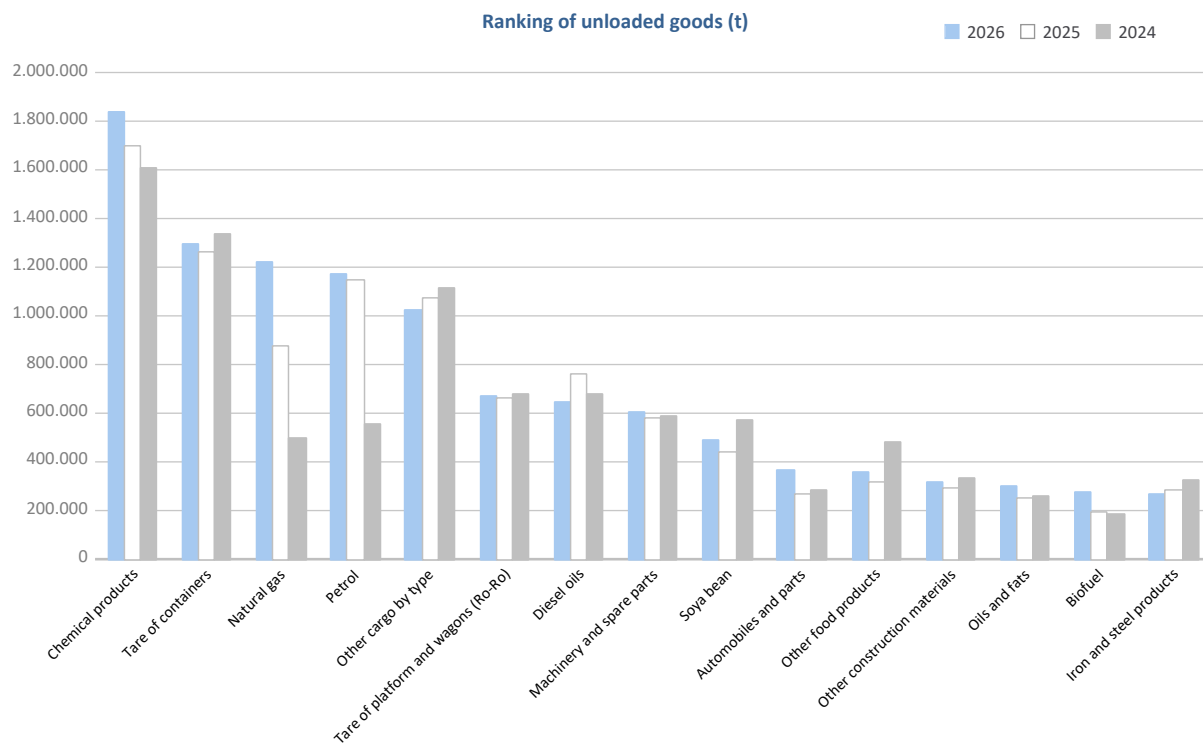
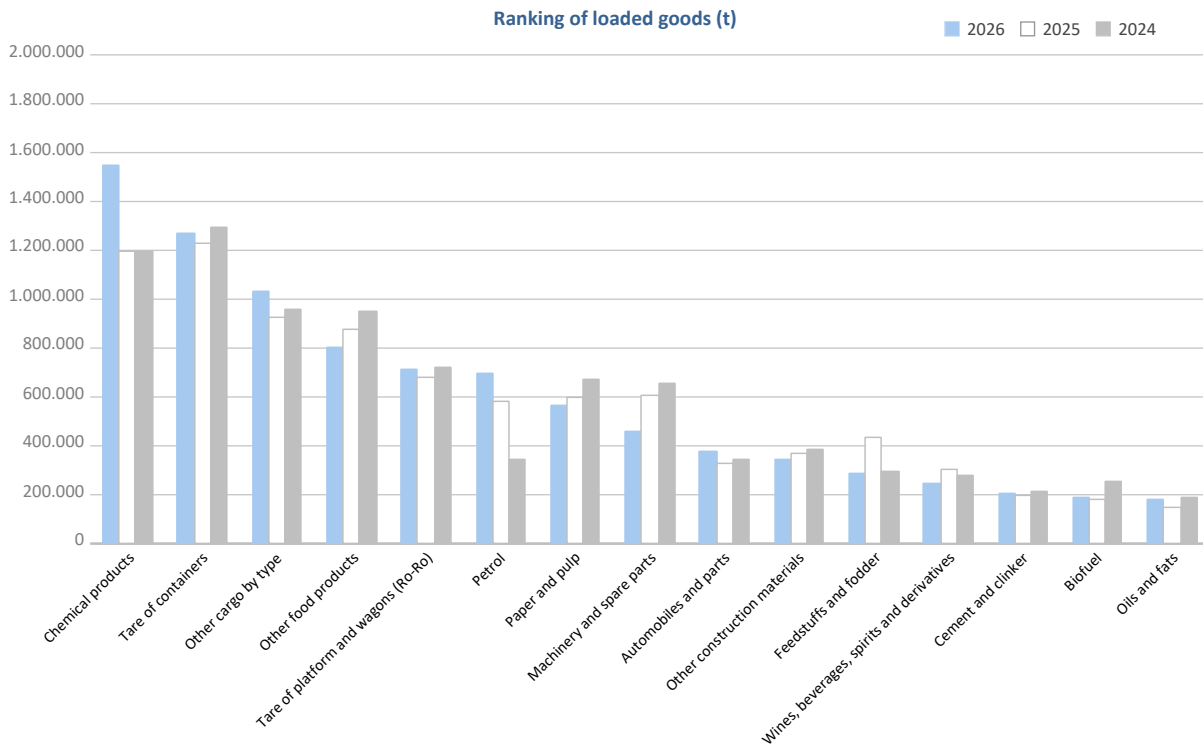
GOODS TRAFFIC

Goods by classification 4.3.7.	Monthly accumulated				% of total accum. 2026
	2025	2026	Diff. 26-25	%	
Tonnes	22.035.664	23.354.873	1.319.208	6,0%	100%
Energy	4.182.826	4.823.156	640.330	15,3%	20,7%
Crude oil	480	190	-290	-60,4%	0,0%
Fuel oil	264.138	212.042	-52.096	-19,7%	0,9%
Diesel oils	796.132	797.422	1.289	0,2%	3,4%
Petrol	1.729.433	1.874.098	144.666	8,4%	8,0%
Other petroleum products	98.709	173.920	75.211	76,2%	0,7%
Petroleum fuel gasses	25.035	8.376	-16.659	-66,5%	0,0%
Coal	10.049	17.772	7.724	76,9%	0,1%
Natural gas	883.810	1.274.641	390.830	44,2%	5,5%
Biofuel	375.040	464.695	89.655	23,9%	2,0%
Iron, steel and metallurgical products	850.577	864.562	13.985	1,6%	3,7%
Iron ore	10.712	3.343	-7.368	-68,8%	0,0%
Other minerals and metallic waste	164.519	156.104	-8.414	-5,1%	0,7%
Scrap iron	99.038	103.636	4.598	4,6%	0,4%
Iron and steel products	424.000	429.137	5.136	1,2%	1,8%
Other metallurgical products	152.308	172.341	20.033	13,2%	0,7%
Non-metallic minerals	270.469	303.301	32.832	12,1%	1,3%
Common salt	92.586	110.321	17.735	19,2%	0,5%
Other non-metallic minerals	177.882	192.980	15.098	8,5%	0,8%
Fertilizers	232.994	280.628	47.634	20,4%	1,2%
Phosphates	1.246	96	-1.150	-92,3%	0,0%
Potashes	138.714	169.228	30.514	22,0%	0,7%
Natural/artificial fertilizer	93.034	111.304	18.270	19,6%	0,5%
Chemicals	2.896.689	3.386.875	490.186	16,9%	14,5%
Chemical products	2.896.689	3.386.875	490.186	16,9%	14,5%
Construction materials	880.002	888.265	8.262	0,9%	3,8%
Asphalt	1.754	1.933	180	10,2%	0,0%
Cement and clinker	213.117	225.882	12.766	6,0%	1,0%
Other construction materials	665.132	660.449	-4.683	-0,7%	2,8%
Agriculture, livestock and food	4.097.716	4.048.172	-49.544	-1,2%	17,3%
Cereals and flours	381.185	283.087	-98.098	-25,7%	1,2%
Soya bean	438.287	497.190	58.903	13,4%	2,1%
Fruits, vegetables, pulses	192.085	230.226	38.140	19,9%	1,0%
Wines, beverages, spirits and derivatives	424.547	321.123	-103.423	-24,4%	1,4%
Canned goods	121.878	111.244	-10.634	-8,7%	0,5%
Tobacco, coffee, cocoa	318.750	376.306	57.556	18,1%	1,6%
Oils and fats	395.800	478.084	82.285	20,8%	2,0%
Other food products	1.199.737	1.163.263	-36.475	-3,0%	5,0%
Frozen fish	140.091	233.064	92.974	66,4%	1,0%
Feedstuffs and fodder	485.357	354.585	-130.772	-26,9%	1,5%
Other cargo	4.187.988	4.062.024	-125.964	-3,0%	17,4%
Timber	189.742	181.366	-8.376	-4,4%	0,8%
Paper and pulp	806.911	765.311	-41.601	-5,2%	3,3%
Machinery and spare parts	1.191.127	1.058.698	-132.429	-11,1%	4,5%
Other cargo by type	2.000.208	2.056.650	56.442	2,8%	8,8%
Vehicles and transport parts	4.436.403	4.697.890	261.487	5,9%	20,1%
Automobiles and parts	603.528	745.751	142.222	23,6%	3,2%
Tare of platform and wagons (Ro-Ro)	1.337.402	1.383.266	45.863	3,4%	5,9%
Tare of containers	2.495.472	2.568.874	73.401	2,9%	11,0%

GOODS TRAFFIC

Goods by classification 4.3.7.

Ranking of goods (tonnes)

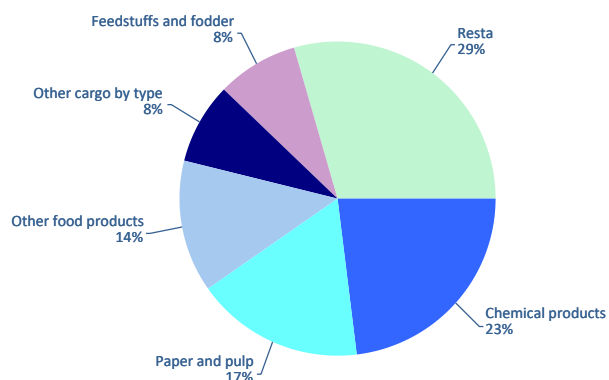


GOODS TRAFFIC

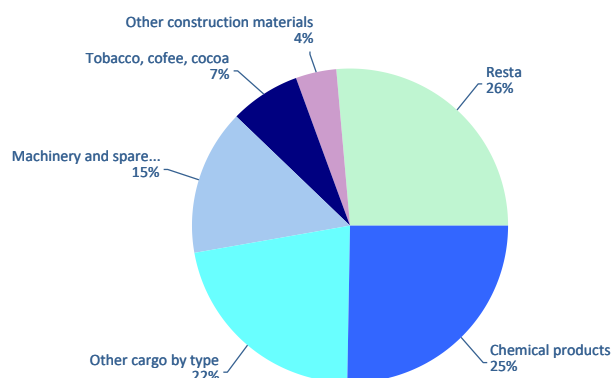
Containerized goods by classification 4.3.7. (Tares & transits not included)

Containerized goods classification	Loaded			Unloaded			Total monthly accumulated		
	2025	2026	%	2025	2026	%	2025	2026	%
Total tonnes (tares & transits not included)	2.978.079	2.577.369	-13,5%	2.217.452	2.195.013	-1,0%	5.195.531	4.772.382	-8,1%
Chemical products	630.815	596.002	-5,5%	610.587	552.926	-9,4%	1.241.402	1.148.928	-7,4%
Other cargo by type	215.069	218.892	1,8%	534.099	484.820	-9,2%	749.168	703.713	-6,1%
Paper and pulp	489.154	443.935	-9,2%	65.903	72.524	10,0%	555.057	516.459	-7,0%
Machinery and spare parts	145.511	120.594	-17,1%	286.560	326.330	13,9%	432.071	446.924	3,4%
Other food products	438.290	348.407	-20,5%	18.449	25.017	35,6%	456.738	373.424	-18,2%
Feedstuffs and fodder	367.582	210.375	-42,8%	13.011	22.491	72,9%	380.593	232.866	-38,8%
Tobacco, coffee, cocoa	27.825	23.921	-14,0%	156.449	160.747	2,7%	184.274	184.668	0,2%
Other construction materials	100.171	84.664	-15,5%	81.703	92.246	12,9%	181.874	176.910	-2,7%
Wines, beverages, spirits and derivatives	126.977	123.135	-3,0%	14.463	12.727	-12,0%	141.440	135.862	-3,9%
Iron and steel products	54.804	41.791	-23,7%	94.317	89.606	-5,0%	149.121	131.397	-11,9%
Automobiles and parts	38.691	34.429	-11,0%	81.977	87.369	6,6%	120.668	121.798	0,9%
Other minerals and metallic waste	80.848	86.394	6,9%	14.684	9.645	-34,3%	95.532	96.039	0,5%
Other metallurgical products	25.046	15.421	-38,4%	44.831	49.294	10,0%	69.877	64.716	-7,4%
Fruits, vegetables, pulses	17.604	17.287	-1,8%	43.522	43.606	0,2%	61.126	60.892	-0,4%
Oils and fats	44.500	39.225	-11,9%	10.841	20.355	87,8%	55.341	59.581	7,7%
Biofuel	43.490	40.339	-7,2%	13.845	16.663	20,4%	57.334	57.003	-0,6%
Canned goods	25.456	23.755	-6,7%	36.918	32.527	-11,9%	62.374	56.282	-9,8%
Other non-metallic minerals	30.357	27.557	-9,2%	25.233	28.340	12,3%	55.590	55.898	0,6%
Cereals and flours	14.267	20.542	44,0%	10.117	12.472	23,3%	24.384	33.015	35,4%
Natural/artificial fertilizer	15.060	17.552	16,5%	6.515	6.681	2,5%	21.575	24.233	12,3%
Scrap iron	8.127	10.868	33,7%	15.306	9.170	-40,1%	23.434	20.038	-14,5%
Frozen fish	519	1.632	214,7%	16.135	16.670	3,3%	16.654	18.302	9,9%
Timber	5.486	3.078	-43,9%	8.374	10.182	21,6%	13.859	13.260	-4,3%
Other petroleum products	6.478	6.458	-0,3%	4.492	4.596	2,3%	10.970	11.054	0,8%
Common salt	9.561	7.822	-18,2%	570	599	5,0%	10.131	8.421	-16,9%
Coal	817	1.382	69,1%	4.963	4.774	-3,8%	5.780	6.156	6,5%
Fuel oil	3.492	4.730	35,4%	1.677	1.179	-29,7%	5.169	5.909	14,3%
Cement and clinker	4.342	5.818	34,0%	502	1	-99,9%	4.844	5.819	20,1%
Potashes	209	218	4,3%	590	1.152	95,3%	799	1.370	71,5%
Asphalt	275	944	242,8%	22	44	100,0%	297	988	232,3%
Soya bean	152	63	-58,4%	576	83	-85,6%	729	146	-79,9%
Iron ore	186	24	-87,0%	23	56	142,9%	209	81	-61,5%
Petroleum fuel gasses	6.892	18	-99,7%	99	59	-40,9%	6.991	77	-98,9%
Petrol	4	31	624,3%	48	44	-8,1%	52	75	44,3%
Phosphates	20	25	23,6%	49	20	-58,7%	69	45	-34,8%
Crude oil	0	31	470,0%	0	0		0	31	
Diesel oils	1	5	470,0%	0	0		1	5	470,0%

Distribution of main goods Loaded 2026



Distribution of main goods Unloaded 2026

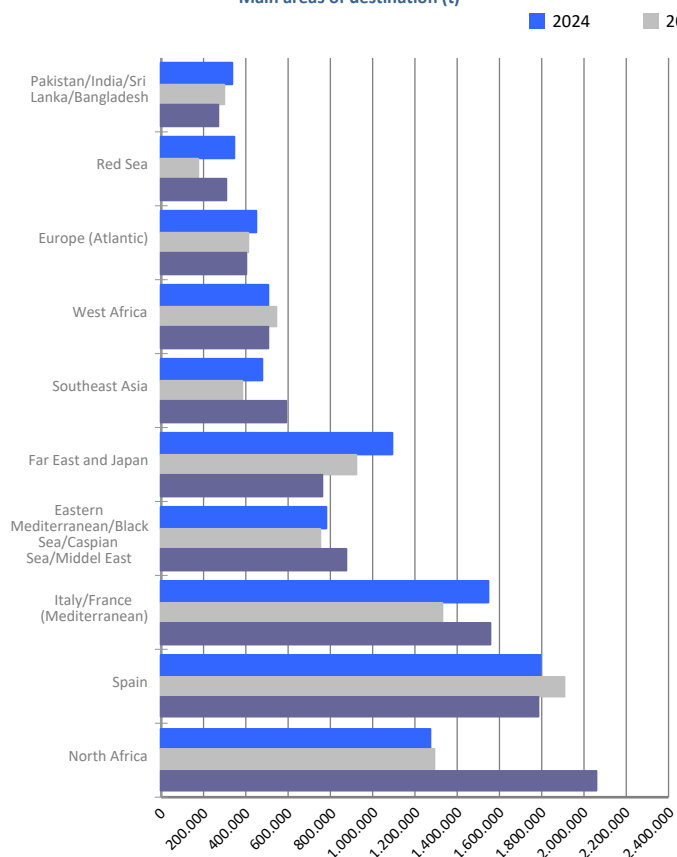


MARITIME TRAFFIC BY ORIGIN/DESTINATION

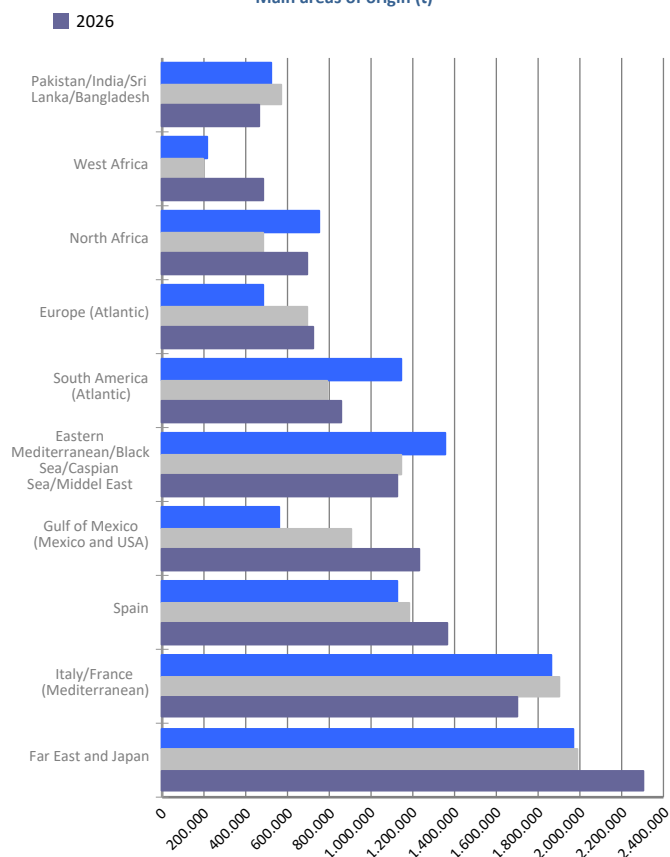
Geographical areas. Tonnes

Geographical areas	Monthly accumulated				% of total accum. 2026
	2025	2026	Diff. 26-25	%	
Tonnes	22.035.664	23.354.873	1.319.208	6,0%	100%
Italy/France (Mediterranean)	3.235.067	3.260.394	25.327	0,8%	14,0%
Spain	3.093.968	3.153.445	59.477	1,9%	13,5%
Far East and Japan	2.911.446	3.068.207	156.761	5,4%	13,1%
North Africa	1.773.837	2.755.653	981.816	55,3%	11,8%
Eastern Mediterranean/Black Sea/Caspian Sea/Middel	1.898.920	1.997.107	98.186	5,2%	8,6%
Gulf of Mexico (Mexico and USA)	1.202.210	1.442.882	240.672	20,0%	6,2%
Europe (Atlantic)	1.112.488	1.126.618	14.130	1,3%	4,8%
Southeast Asia	821.883	1.030.241	208.358	25,4%	4,4%
South America (Atlantic)	947.361	1.028.464	81.103	8,6%	4,4%
West Africa	743.658	994.659	251.001	33,8%	4,3%
Red Sea	638.779	764.169	125.390	19,6%	3,3%
Pakistan/India/Sri Lanka/Bangladesh	875.580	736.157	-139.423	-15,9%	3,2%
Persian Gulf/Arabian Sea	823.047	424.996	-398.050	-48,4%	1,8%
North America (Atlantic)	623.591	423.990	-199.601	-32,0%	1,8%
Central America and Caribbean	454.950	310.936	-144.014	-31,7%	1,3%
Unknown area (Tare of empty containers)	202.328	216.288	13.960	6,9%	0,9%
South-Eastern Africa/Indian Ocean	141.205	202.009	60.804	43,1%	0,9%
South America (Pacific)	252.975	186.394	-66.581	-26,3%	0,8%
Australia, New Zealand/Pacific Islands	101.916	81.757	-20.159	-19,8%	0,4%
North America (Pacific)	89.252	76.268	-12.984	-14,5%	0,3%
Canada (Atlantic) and Great Lakes	91.202	74.240	-16.962	-18,6%	0,3%

Main areas of destination (t)



Main areas of origin (t)

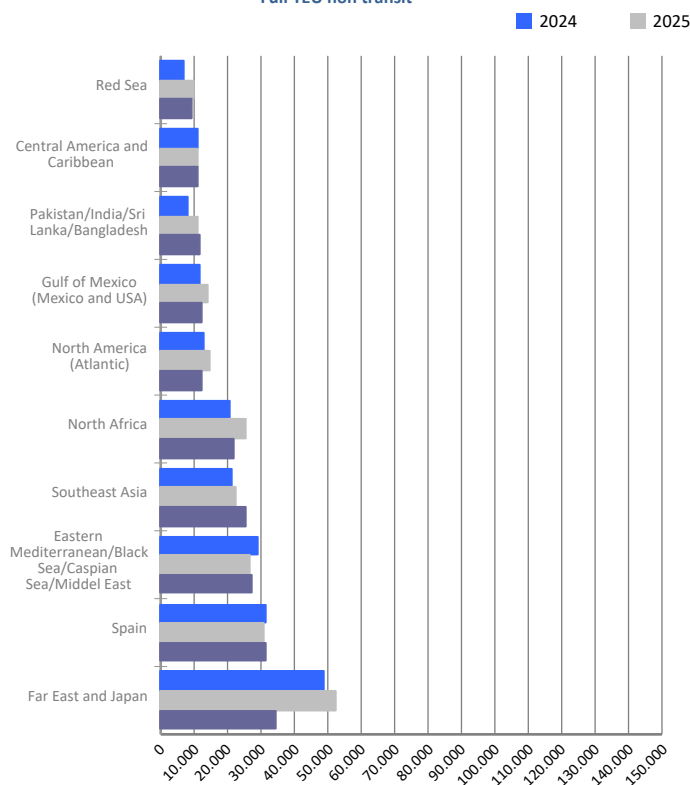


MARITIME TRAFFIC BY ORIGIN/DESTINATION

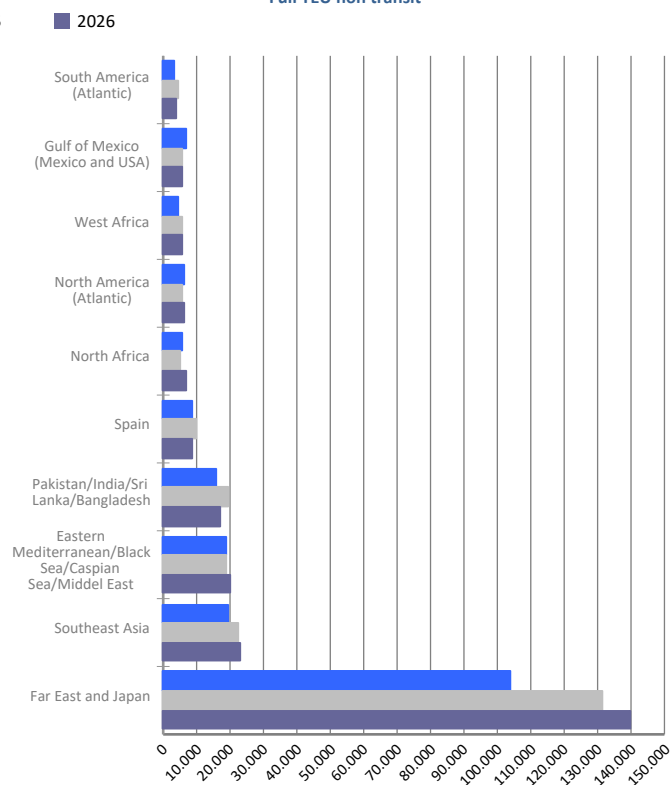
Geographical areas. Full TEU non transit

Geographical areas	Monthly accumulated				% of total accum. 2026
	2025	2026	Diff. 26-25	%	
Full TEU non transit	523.538	496.459	-27.079	-5,2%	100%
Far East and Japan	184.005	174.196	-9.810	-5,3%	35,1%
Southeast Asia	45.164	48.621	3.458	7,7%	9,8%
Eastern Mediterranean/Black Sea/Caspian Sea/Middel	45.728	47.357	1.629	3,6%	9,5%
Spain	40.720	40.146	-574	-1,4%	8,1%
Pakistan/India/Sri Lanka/Bangladesh	31.080	28.984	-2.096	-6,7%	5,8%
North Africa	30.958	28.646	-2.312	-7,5%	5,8%
North America (Atlantic)	20.546	18.844	-1.702	-8,3%	3,8%
Gulf of Mexico (Mexico and USA)	19.993	18.036	-1.957	-9,8%	3,6%
West Africa	12.795	13.924	1.129	8,8%	2,8%
South America (Atlantic)	13.087	13.396	309	2,4%	2,7%
Central America and Caribbean	12.790	12.787	-3	-0,0%	2,6%
South America (Pacific)	10.997	11.873	876	8,0%	2,4%
Red Sea	12.002	11.373	-629	-5,2%	2,3%
Persian Gulf/Arabian Sea	24.068	10.335	-13.733	-57,1%	2,1%
South-Eastern Africa/Indian Ocean	6.893	5.611	-1.282	-18,6%	1,1%
Australia, New Zealand/Pacific Islands	3.759	3.480	-279	-7,4%	0,7%
Canada (Atlantic) and Great Lakes	4.157	3.432	-725	-17,4%	0,7%
Europe (Atlantic)	1.965	3.229	1.264	64,3%	0,7%
North America (Pacific)	2.467	1.709	-758	-30,7%	0,3%
Italy/France (Mediterranean)	368	483	115	31,3%	0,1%

Main areas of destination
Full TEU non transit



Main areas of origin
Full TEU non transit

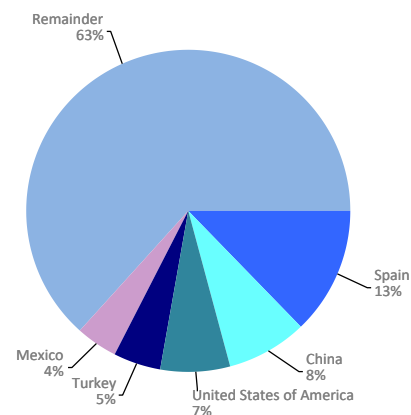


MARITIME TRAFFIC BY ORIGIN/DESTINATION

Ranking countries. Full TEU non transit

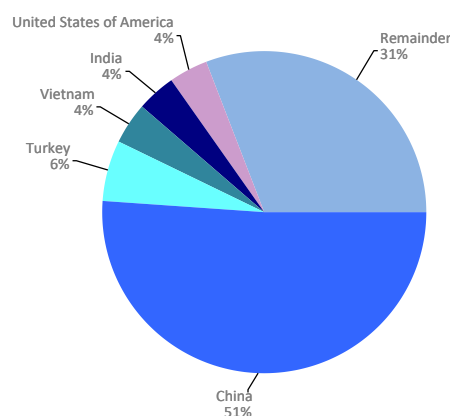
Loaded	Full TEU	% 26-25	% a/packaging
Spain	31.385	1,2%	12,8%
China	19.455	-33,1%	7,9%
United States of America	17.300	-15,0%	7,1%
Turkey	11.640	7,8%	4,7%
Mexico	10.091	-12,9%	4,1%
India	9.511	7,4%	3,9%
Morocco	7.840	-24,9%	3,2%
Algeria	7.254	-1,1%	3,0%
Saudi Arabia	7.222	-36,0%	2,9%
Korea (South)	6.876	-21,7%	2,8%
Vietnam	6.790	54,2%	2,8%
Israel	6.151	-9,5%	2,5%
Brazil	5.946	31,6%	2,4%
Japan	5.561	-29,0%	2,3%
Indonesia	5.267	31,3%	2,1%
Remainder	86.943	-14,1%	35,5%
TOTAL	245.228	-11,9%	100%

Main countries. Loaded



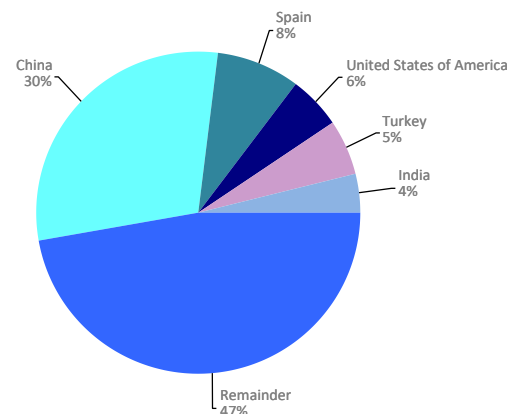
Unloaded	Full TEU	% 26-25	% a/packaging
China	128.650	8,7%	51,2%
Turkey	15.117	9,7%	6,0%
Vietnam	10.141	7,5%	4,0%
India	10.136	-10,6%	4,0%
United States of America	10.022	-0,6%	4,0%
Spain	8.761	-9,6%	3,5%
Korea (South)	6.284	-20,5%	2,5%
Egypt	5.380	27,1%	2,1%
Bangladesh	4.564	-21,6%	1,8%
Indonesia	3.191	1,4%	1,3%
Brazil	3.032	-21,7%	1,2%
Thailand	2.966	-2,1%	1,2%
Greece	2.860	12,3%	1,1%
Cote d'Ivoire	2.801	-14,4%	1,1%
Saudi Arabia	2.671	-27,0%	1,1%
Remainder	34.657	-0,9%	13,8%
TOTAL	251.231	2,5%	100%

Main countries. Unloaded



Total	Full TEU	% 26-25	% a/packaging
China	148.105	0,4%	29,8%
Spain	40.146	-1,4%	8,1%
United States of America	27.322	-10,3%	5,5%
Turkey	26.757	8,9%	5,4%
India	19.647	-2,7%	4,0%
Vietnam	16.931	22,3%	3,4%
Korea (South)	13.160	-21,2%	2,7%
Mexico	11.956	-13,1%	2,4%
Saudi Arabia	9.893	-33,8%	2,0%
Egypt	9.444	4,7%	1,9%
Brazil	8.978	7,0%	1,8%
Morocco	8.656	-21,6%	1,7%
Indonesia	8.457	18,1%	1,7%
Singapore	7.716	6,8%	1,6%
Israel	7.699	-10,1%	1,6%
Remainder	131.596	-12,0%	26,5%
TOTAL	496.459	-5,2%	100%

Main countries. Total



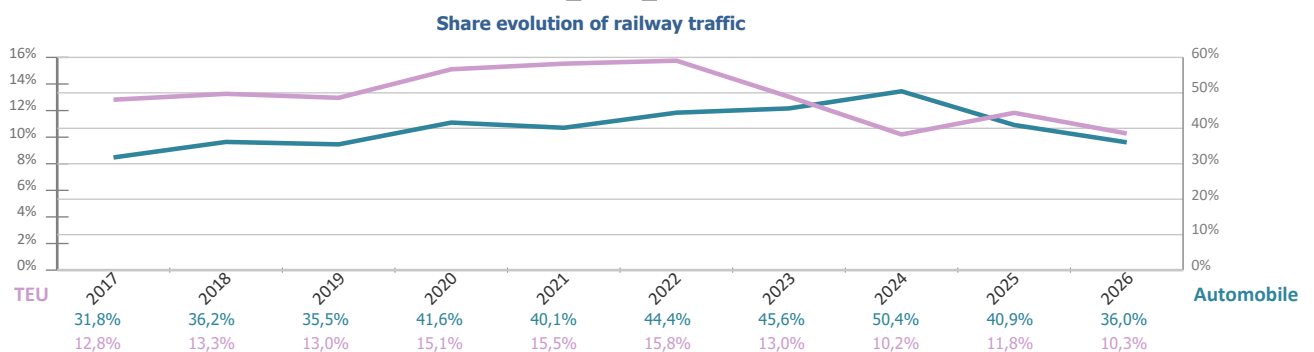
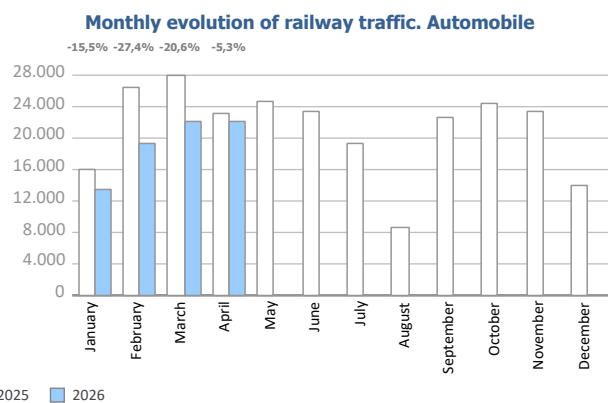
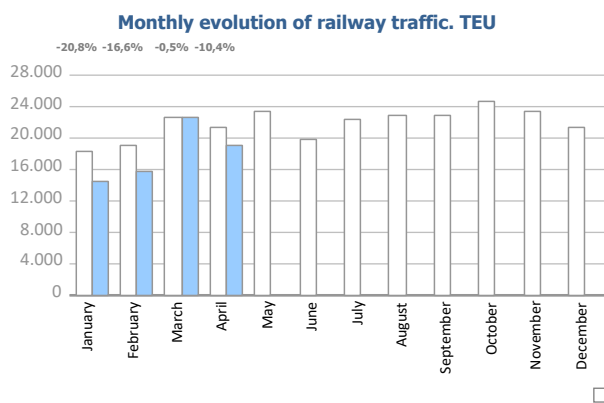
RAILWAY TRAFFIC

Monthly evolution of railway traffic. TEU

Monthly evolution of railway traffic	TEU 2025			TEU 2026			%		% of total port traffic 2026
	Loaded	Unloaded	Total	Loaded	Unloaded	Total	Monthly	Accumulated	
January	8.469	9.885	18.354	6.780	7.764	14.544	-20,8%	-20,8%	8,7%
February	9.016	9.960	18.976	8.198	7.630	15.828	-16,6%	-18,6%	9,7%
March	10.451	12.288	22.739	11.649	10.984	22.633	-0,5%	-11,8%	12,2%
April	10.040	11.254	21.294	9.844	9.234	19.078	-10,4%	-11,4%	10,3%
May	11.651	11.664	23.315						
June	9.237	10.534	19.771						
July	10.555	11.746	22.301						
August	10.855	11.909	22.764						
September	11.658	11.303	22.961						
October	11.934	12.713	24.647						
November	11.530	11.802	23.332						
December	10.082	11.395	21.477						
Total	125.478	136.453	261.931	36.471	35.612	72.083			10,3%

Monthly evolution of railway traffic. Automobile

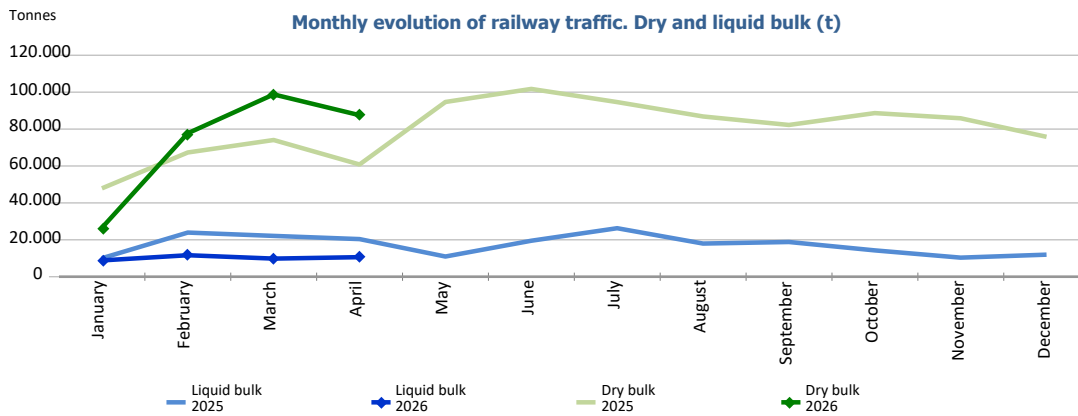
Monthly evolution of railway traffic	Automobile 2025			Automobile 2026			%		% of total port traffic 2026
	Loaded	Unloaded	Total	Loaded	Unloaded	Total	Monthly	Accumulated	
January	2.968	13.032	16.000	1.544	11.971	13.515	-15,5%	-15,5%	39,0%
February	4.381	22.094	26.475	2.196	17.026	19.222	-27,4%	-22,9%	43,0%
March	4.831	23.148	27.979	1.469	20.734	22.203	-20,6%	-22,0%	30,5%
April	3.780	19.481	23.261	350	21.677	22.027	-5,3%	-17,9%	35,9%
May	2.397	22.334	24.731						
June	2.956	20.530	23.486						
July	3.390	15.927	19.317						
August	1.705	6.882	8.587						
September	2.955	19.618	22.573						
October	3.368	21.134	24.502						
November	2.619	20.771	23.390						
December	2.841	11.190	14.031						
Total	38.191	216.141	254.332	5.559	71.408	76.967			36,0%



RAILWAY TRAFFIC

Monthly evolution of railway traffic. Dry and liquid bulk. Tonnes

Monthly evolution of railway traffic	Tonnes 2025			Tonnes 2026			%	
	Dry bulk	Liquid bulk	Total	Dry bulk	Liquid bulk	Total	Monthly	Accumulated
January	47.878	10.031	57.909	26.516	8.825	35.341	-39,0%	-39,0%
February	67.327	23.920	91.247	77.725	11.641	89.366	-2,1%	-16,4%
March	74.072	22.114	96.186	98.785	9.819	108.604	12,9%	-4,9%
April	60.821	20.390	81.211	87.528	10.587	98.115	20,8%	1,5%
May	94.685	10.947	105.632					
June	101.762	19.497	121.259					
July	94.625	26.285	120.910					
August	86.833	17.962	104.795					
September	82.230	18.811	101.041					
October	88.659	14.271	102.930					
November	85.854	10.326	96.180					
December	75.796	11.945	87.741					
Total	960.542	206.499	1.167.041	290.554	40.872	331.426		



Railway traffic.

Railway gauge traffic (u)	Monthly accumulated		%	% of accumulated total 2026
	2025	2026		
Iberian gauge	2.328	1.883	-19,1%	61,0%
UIC	312	106	-66,0%	3,4%
FGC	1.042	1.098	5,4%	35,6%
Total	3.682	3.087	-16,2%	100%

