

**Port of Barcelona traffic statistics**

**Accumulated data February 2025**

**Statistics Service**

## Index

---

### Traffic indicators

Total traffic	3
Main indicators	4
Breakdown of total traffic	5
Breakdown of traffic in transit	6
Monthly evolution of traffic	7

### Container traffic

TEU evolution	8
Container traffic (TEU)	9

### Passenger traffic

Passenger traffic	10
Passenger classification	11

### Automobile traffic

Automobile traffic	12
--------------------	----

### Short Sea Shipping traffic (SSS)

SSS Goods classification	13
SSS General cargo and Motorways of the sea (MoS)	14
SSS Ranking countries	15

### Vessel traffic

Vessel traffic	16
----------------	----

### Goods traffic

Mode of packaging and navigation	17
Goods by classification 4.3.7.	18
Goods ranking	19
Containerized goods by classification 4.3.7.	20

### Maritime traffic by origin/destination

Geographical areas. Tonnes	21
Geographical areas. Full TEU non transit	22
Ranqing countries. Full TEU non transit	23

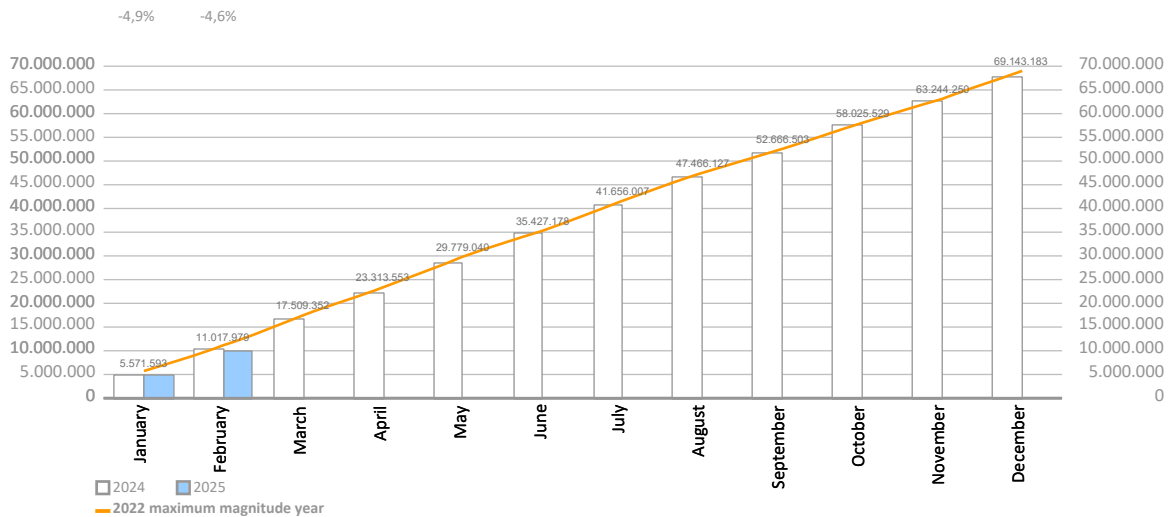
### Railway traffic

Evolution of railway traffic (TEU and automobile)	24
Evolution of railway traffic (Solid and liquid bulk)	25
Railway gauge traffic	25

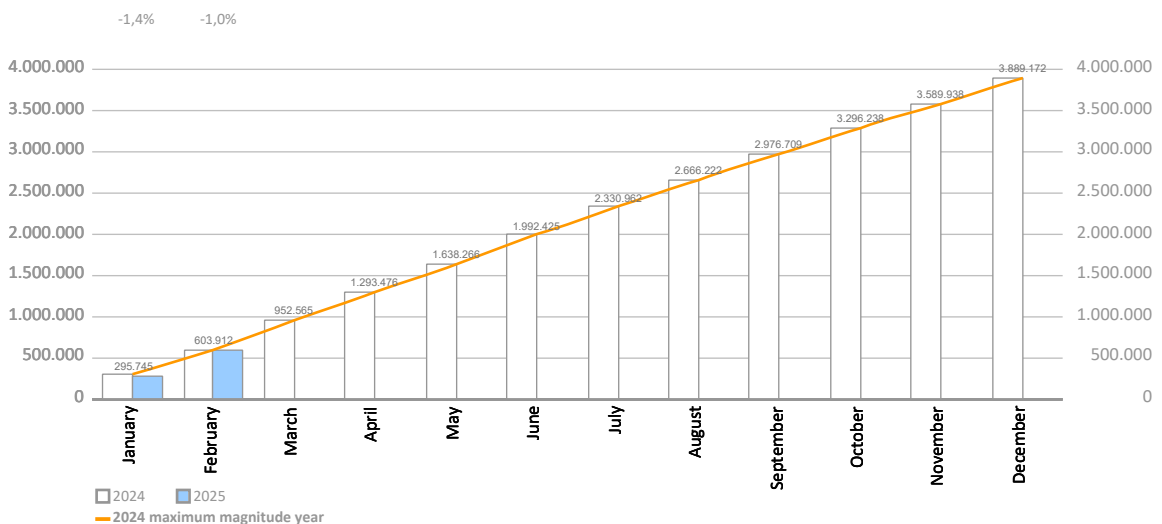
# TRAFFIC INDICATORS

Total traffic	Monthly accumulated				% 25-24 accum. January	% 24-23 accum. December	Total traffic 2024
	2024	2025	Diff. 25-24	%			
O/D	6.147.912	6.300.918	153.006	2,5%	7,5%	2,1%	42.714.452
Transit	4.211.866	3.583.315	-628.551	-14,9%	-22,5%	21,9%	25.106.986
<b>Total throughput (tonnes)</b>	<b>10.359.778</b>	<b>9.884.233</b>	<b>-475.546</b>	<b>-4,6%</b>	<b>-4,9%</b>	<b>8,6%</b>	<b>67.821.438</b>
Supplies	206.929	228.487	21.559	10,4%	-3,9%	16,0%	1.861.693
Fishing	246	238	-8	-3,2%	-2,5%	66,9%	2.577
<b>TOTAL TRAFFIC (tonnes)</b>	<b>10.566.952</b>	<b>10.112.957</b>	<b>-453.995</b>	<b>-4,3%</b>	<b>-4,9%</b>	<b>8,8%</b>	<b>69.685.709</b>
<b>TEU</b>	<b>603.912</b>	<b>597.761</b>	<b>-6.151</b>	<b>-1,0%</b>	<b>-1,4%</b>	<b>18,6%</b>	<b>3.889.172</b>
<b>UTI</b>	<b>64.167</b>	<b>61.755</b>	<b>-2.412</b>	<b>-3,8%</b>	<b>-1,5%</b>	<b>2,8%</b>	<b>427.849</b>
<b>Automobiles (units)</b>	<b>110.593</b>	<b>94.358</b>	<b>-16.235</b>	<b>-14,7%</b>	<b>-13,9%</b>	<b>-13,7%</b>	<b>682.082</b>
<b>Vessels (units)</b>	<b>1.243</b>	<b>1.112</b>	<b>-131</b>	<b>-10,5%</b>	<b>-13,9%</b>	<b>-4,4%</b>	<b>8.383</b>
<b>Railway traffic (units)</b>	<b>1.806</b>	<b>1.729</b>	<b>-77</b>	<b>-4,3%</b>	<b>-4,7%</b>	<b>5,3%</b>	<b>10.994</b>
<b>Cruise passengers (units)</b>	<b>185.975</b>	<b>203.414</b>	<b>17.439</b>	<b>9,4%</b>	<b>0,0%</b>	<b>2,4%</b>	<b>3.655.685</b>
<b>Ferry passengers (units)</b>	<b>127.163</b>	<b>126.132</b>	<b>-1.031</b>	<b>-0,8%</b>	<b>-0,7%</b>	<b>0,2%</b>	<b>1.739.468</b>
<b>Automobile passengers (units)</b>	<b>40.594</b>	<b>43.228</b>	<b>2.634</b>	<b>6,5%</b>	<b>6,3%</b>	<b>3,0%</b>	<b>530.925</b>

Monthly evolution of the accumulated traffic of goods. Tonnes



Monthly evolution of the accumulated traffic of goods. TEU



## TRAFFIC INDICATORS

Main indicators	Monthly accumulated				Last 12 months	Total traffic 2024	% 12 months-2024
	2024	2025	Diff. 25-24	%			
<b>Goods indicators by navigation and operation (tonnes)</b>							
<b>Navigation (t)</b>	<b>10.359.778</b>	<b>9.884.233</b>	<b>-475.546</b>	<b>-4,6%</b>	<b>67.345.892</b>	<b>67.821.438</b>	<b>-0,7%</b>
Domestic	1.214.483	1.232.294	17.811	1,5%	8.554.442	8.536.631	0,2%
Foreign	9.145.295	8.651.939	-493.357	-5,4%	58.791.450	59.284.807	-0,8%
<b>Operation (t)</b>	<b>10.359.778</b>	<b>9.884.233</b>	<b>-475.546</b>	<b>-4,6%</b>	<b>67.345.892</b>	<b>67.821.438</b>	<b>-0,7%</b>
Loaded	2.915.536	2.984.851	69.315	2,4%	19.951.235	19.881.919	0,3%
Unloaded	3.232.376	3.316.067	83.690	2,6%	22.916.223	22.832.533	0,4%
Transit	4.211.866	3.583.315	-628.551	-14,9%	24.478.435	25.106.986	-2,5%
<b>Goods indicators by main units</b>							
<b>Containers (TEU)</b>	<b>603.912</b>	<b>597.761</b>	<b>-6.151</b>	<b>-1,0%</b>	<b>3.883.022</b>	<b>3.889.172</b>	<b>-0,2%</b>
TEU O/D	311.190	353.773	42.582	13,7%	2.191.239	2.148.657	2,0%
TEU transit	292.722	243.989	-48.733	-16,6%	1.691.783	1.740.516	-2,8%
Containerized tonnes	6.161.401	5.870.473	-290.928	-4,7%	37.406.661	37.697.589	-0,8%
Level of containerization	78,05%	77,40%			76,27%	76,38%	
<b>Passengers (u)</b>	<b>313.138</b>	<b>329.546</b>	<b>16.408</b>	<b>5,2%</b>	<b>5.411.561</b>	<b>5.395.153</b>	<b>0,3%</b>
Regular line	127.163	126.132	-1.031	-0,8%	1.738.437	1.739.468	-0,1%
Pleasure cruises	185.975	203.414	17.439	9,4%	3.673.124	3.655.685	0,5%
<b>Automobiles (u)</b>	<b>110.593</b>	<b>94.358</b>	<b>-16.235</b>	<b>-14,7%</b>	<b>665.847</b>	<b>682.082</b>	<b>-2,4%</b>
Loaded	64.646	55.996	-8.650	-13,4%	420.349	428.999	-2,0%
Unloaded	26.958	22.760	-4.198	-15,6%	151.762	155.960	-2,7%
Transit	18.989	15.602	-3.387	-17,8%	93.736	97.123	-3,5%
<b>Vessels (u)</b>	<b>1.243</b>	<b>1.112</b>	<b>-131</b>	<b>-10,5%</b>	<b>8.252</b>	<b>8.383</b>	<b>-1,6%</b>
Number of calls	1.243	1.112	-131	-10,5%	8.252	8.383	-1,6%
Gross Tonnage (GT)	48.124.439	44.880.592	-3.243.847	-6,7%	360.995.482	364.239.329	-0,9%
Average tonnes by vessel	8.334	8.889	554	6,6%	8.161	8.090	0,9%
<b>UTI</b>	<b>64.167</b>	<b>61.755</b>	<b>-2.412</b>	<b>-3,8%</b>	<b>425.437</b>	<b>427.849</b>	<b>-0,6%</b>
Domestic	36.638	38.961	2.323	6,3%	270.009	267.686	0,9%
% Full	64,0%	62,9%			61,9%	62,1%	
Foreign	27.529	22.794	-4.735	-17,2%	155.428	160.163	-3,0%
% Full	89,8%	89,7%			89,6%	89,6%	

## TRAFFIC INDICATORS

Breakdown of total traffic (tonnes)	Monthly accumulated				% 25-24 accum. January	% 24-23 accum. December	% of total accum. 2025
	2024	2025	Diff. 25-24	%			
<b>Goods indicators by type of packaging (t)</b>	<b>10.359.778</b>	<b>9.884.233</b>	<b>-475.546</b>	<b>-4,6%</b>	<b>-4,9%</b>	<b>8,6%</b>	<b>100%</b>
<b>Liquid bulk</b>	<b>1.778.650</b>	<b>1.789.816</b>	<b>11.166</b>	<b>0,6%</b>	<b>-6,6%</b>	<b>6,2%</b>	<b>18,1%</b>
<b>Hydrocarbons</b>	<b>1.186.814</b>	<b>1.327.642</b>	<b>140.828</b>	<b>11,9%</b>	<b>2,3%</b>	<b>-0,4%</b>	<b>13,4%</b>
Petrol	503.790	673.941	170.151	33,8%	-10,7%	41,4%	6,8%
Diesel oils	229.404	271.630	42.226	18,4%	-7,4%	7,8%	2,7%
Natural gas	332.080	244.069	-88.011	-26,5%	26,7%	-34,0%	2,5%
Fuel oil	84.179	76.641	-7.538	-9,0%	-32,1%	-26,7%	0,8%
Other petroleum products	32.316	54.654	22.339	69,1%	213,9%	6,8%	0,6%
Remainder	5.046	6.708	1.662	32,9%	99,6%	-11,0%	0,1%
<b>Other liquid bulk</b>	<b>591.836</b>	<b>462.174</b>	<b>-129.662</b>	<b>-21,9%</b>	<b>-18,2%</b>	<b>23,8%</b>	<b>4,7%</b>
Chemical products	268.676	220.902	-47.774	-17,8%	-22,7%	109,4%	2,2%
Biofuel	198.298	144.726	-53.572	-27,0%	-38,7%	-29,8%	1,5%
Oils and fats	110.585	86.551	-24.034	-21,7%	9,9%	-4,0%	0,9%
Natural/artificial fertilizer	14.278	8.808	-5.470	-38,3%	0,0%	17,9%	0,1%
Other petroleum products	0	1.187	1.187	0,0%	0,0%	0,0%	0,0%
Remainder	0	0	0			17,1%	0,0%
<b>Dry bulk</b>	<b>686.768</b>	<b>510.283</b>	<b>-176.485</b>	<b>-25,7%</b>	<b>-4,0%</b>	<b>0,0%</b>	<b>5,2%</b>
<b>Special installation</b>	<b>640.500</b>	<b>474.710</b>	<b>-165.790</b>	<b>-25,9%</b>	<b>-0,9%</b>	<b>0,9%</b>	<b>4,8%</b>
Soya bean	267.564	163.323	-104.241	-39,0%	-29,6%	10,3%	1,7%
Cereals and flours	137.375	136.146	-1.229	-0,9%	51,4%	-10,0%	1,4%
Cement and clinker	73.818	78.468	4.650	6,3%	88,1%	-9,9%	0,8%
Potashes	75.082	59.062	-16.020	-21,3%	-50,2%	18,5%	0,6%
Common salt	72.958	37.711	-35.247	-48,3%	89,8%	-5,2%	0,4%
Remainder	13.703	0	-13.703			31,3%	0,0%
<b>Without special installation</b>	<b>46.268</b>	<b>35.573</b>	<b>-10.694</b>	<b>-23,1%</b>	<b>-37,8%</b>	<b>-12,2%</b>	<b>0,4%</b>
Scrap iron	31.173	21.623	-9.550	-30,6%	-66,3%	-15,1%	0,2%
Other minerals and metallic waste	3.500	7.000	3.500	100,0%	34,3%	28,8%	0,1%
Other non-metallic minerals	7.500	3.500	-4.000	-53,3%		-26,9%	0,0%
Chemical products	4.095	3.450	-645	-15,7%	-15,7%	-0,9%	0,0%
Remainder	0	0	0			18,7%	0,0%
<b>General cargo</b>	<b>7.894.361</b>	<b>7.584.133</b>	<b>-310.227</b>	<b>-3,9%</b>	<b>-4,6%</b>	<b>10,3%</b>	<b>76,7%</b>
<b>Containerized</b>	<b>6.161.401</b>	<b>5.870.473</b>	<b>-290.928</b>	<b>-4,7%</b>	<b>-5,1%</b>	<b>12,4%</b>	<b>59,4%</b>
Tare of containers	1.229.732	1.205.893	-23.839	-1,9%	-2,2%	17,3%	12,2%
Chemical products	856.346	1.071.554	215.208	25,1%	35,4%	27,6%	10,8%
Other cargo by type	658.518	693.033	34.514	5,2%	5,8%	18,7%	7,0%
Other food products	658.138	455.548	-202.590	-30,8%	-36,0%	-22,0%	4,6%
Machinery and spare parts	369.693	382.688	12.995	3,5%	4,7%	21,1%	3,9%
Remainder	2.388.973	2.061.757	-327.216	-13,7%	-14,9%	11,2%	20,9%
<b>Non-containerized</b>	<b>1.732.960</b>	<b>1.713.660</b>	<b>-19.299</b>	<b>-1,1%</b>	<b>-3,1%</b>	<b>3,8%</b>	<b>17,3%</b>
Tare of platform and wagons (Ro-Ro)	635.182	598.885	-36.296	-5,7%	-1,6%	3,2%	6,1%
Other cargo by type	296.166	315.552	19.386	6,5%	0,9%	7,9%	3,2%
Machinery and spare parts	193.835	182.252	-11.583	-6,0%	-2,9%	1,5%	1,8%
Automobiles and parts	182.049	166.309	-15.740	-8,6%	-9,5%	-16,4%	1,7%
Other food products	70.115	89.408	19.293	27,5%	15,3%	2,0%	0,9%
Remainder	355.614	361.255	5.641	1,6%	-9,4%	15,2%	3,7%

## TRAFFIC INDICATORS

Breakdown of traffic in transit (tonnes)	Monthly accumulated				% 25-24 accum. January	% 24-23 accum. December	% of total accum. 2025
	2024	2025	Diff. 25-24	%			
<b>Goods indicators by type of packaging (t)</b>	<b>4.211.866</b>	<b>3.583.315</b>	<b>-628.551</b>	<b>-14,9%</b>	<b>-22,5%</b>	<b>21,9%</b>	<b>100%</b>
<b>Liquid bulk</b>	<b>660.458</b>	<b>806.376</b>	<b>145.918</b>	<b>22,1%</b>	<b>-28,2%</b>	<b>41,0%</b>	<b>22,5%</b>
<b>Hydrocarbons</b>	<b>404.109</b>	<b>592.345</b>	<b>188.237</b>	<b>46,6%</b>	<b>-35,5%</b>	<b>37,4%</b>	<b>16,5%</b>
Petrol	290.711	408.238	117.527	40,4%	-51,8%	97,8%	11,4%
Diesel oils	46.838	102.772	55.935	119,4%	-3,6%	8,1%	2,9%
Fuel oil	66.560	76.641	10.080	15,1%	7,6%	-17,2%	2,1%
Other petroleum products	0	4.695	4.695			-66,1%	0,1%
Remainder	0	0	0				0,0%
<b>Other liquid bulk</b>	<b>256.349</b>	<b>214.031</b>	<b>-42.318</b>	<b>-16,5%</b>	<b>-21,5%</b>	<b>47,7%</b>	<b>6,0%</b>
Chemical products	120.613	116.063	-4.550	-3,8%	17,0%	181,2%	3,2%
Biofuel	135.736	97.968	-37.768	-27,8%	-46,5%	-29,1%	2,7%
Remainder	0	0	0			55,0%	0,0%
<b>Dry bulk</b>	<b>0</b>	<b>0</b>	<b>0</b>				<b>0,0%</b>
<b>Special installation</b>	<b>0</b>	<b>0</b>	<b>0</b>				<b>0,0%</b>
Remainder	0	0	0				0,0%
<b>Without special installation</b>	<b>0</b>	<b>0</b>	<b>0</b>				<b>0,0%</b>
Remainder	0	0	0				0,0%
<b>General cargo</b>	<b>3.551.408</b>	<b>2.776.939</b>	<b>-774.470</b>	<b>-21,8%</b>	<b>-21,6%</b>	<b>17,2%</b>	<b>77,5%</b>
<b>Containerized</b>	<b>3.445.288</b>	<b>2.677.434</b>	<b>-767.854</b>	<b>-22,3%</b>	<b>-22,3%</b>	<b>17,5%</b>	<b>74,7%</b>
Tare of containers	600.005	491.475	-108.529	-18,1%	-15,8%	29,4%	13,7%
Chemical products	338.923	490.829	151.907	44,8%	63,4%	44,5%	13,7%
Other cargo by type	368.096	320.300	-47.796	-13,0%	-9,2%	28,4%	8,9%
Other food products	449.050	250.619	-198.431	-44,2%	-48,2%	-30,7%	7,0%
Other construction materials	230.607	199.291	-31.315	-13,6%	-8,1%	64,2%	5,6%
Remainder	1.458.609	924.920	-533.689	-36,6%	-38,3%	14,2%	25,8%
<b>Non-containerized</b>	<b>106.121</b>	<b>99.504</b>	<b>-6.616</b>	<b>-6,2%</b>	<b>6,1%</b>	<b>8,1%</b>	<b>2,8%</b>
Automobiles and parts	33.341	28.511	-4.830	-14,5%	25,8%	-12,0%	0,8%
Tare of platform and wagons (Ro-Ro)	17.621	17.031	-590	-3,3%	1,3%	34,5%	0,5%
Other cargo by type	12.025	12.845	820	6,8%	-13,6%	7,1%	0,4%
Machinery and spare parts	8.759	10.527	1.768	20,2%	18,3%	-19,9%	0,3%
Chemical products	1.560	8.556	6.996	448,5%	652,7%	104,5%	0,2%
Remainder	32.815	22.034	-10.780	-32,9%	-35,0%	60,8%	0,6%

# TRAFFIC INDICATORS

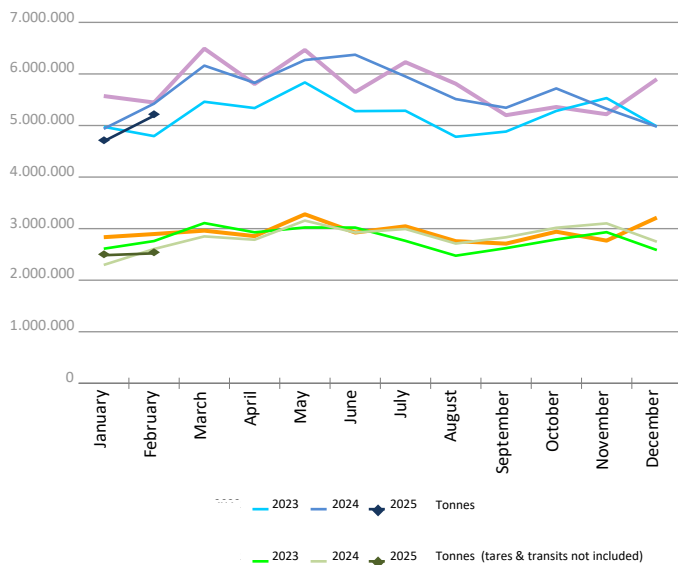
## Monthly evolution of traffic. Tonnes

Monthly evolution of traffic	Total tonnes			%		Tonnes (tares & transits not included)			%	
	2024	2025	Diff. 25-24	Monthly	Accumulated	2024	2025	Diff. 25-24	Monthly	Accumulated
January	4.935.937	4.694.202	-241.736	-4,9%	-4,9%	2.296.202	2.484.295	188.093	8,2%	8,2%
February	5.423.841	5.190.031	-233.810	-4,3%	-4,6%	2.604.422	2.520.351	-84.071	-3,2%	2,1%
March	6.161.248					2.849.618				
April	5.828.284					2.784.465				
May	6.269.807					3.155.550				
June	6.372.644					2.924.702				
July	5.951.200					2.992.874				
August	5.512.633					2.710.662				
September	5.344.261					2.831.842				
October	5.719.292					3.016.957				
November	5.324.186					3.101.658				
December	4.978.105					2.746.380				
<b>Total</b>	<b>67.821.438</b>	<b>9.884.233</b>				<b>34.015.331</b>	<b>5.004.645</b>			

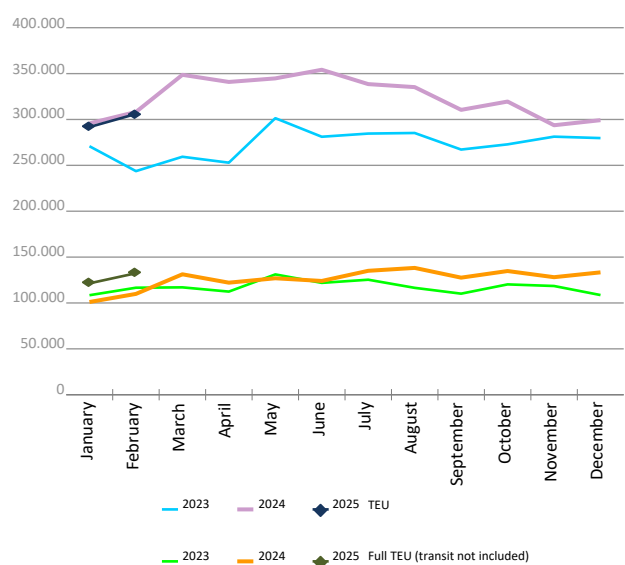
## Monthly evolution of traffic. TEU

Monthly evolution of traffic	Total TEU			%		Full TEU (transit not included)			%	
	2024	2025	Diff. 25-24	Monthly	Accumulated	2024	2025	Diff. 25-24	Monthly	Accumulated
January	295.745	291.746	-4.000	-1,4%	-1,4%	101.061	121.398	20.337	20,1%	20,1%
February	308.167	306.016	-2.151	-0,7%	-1,0%	109.884	132.403	22.520	20,5%	20,3%
March	348.654					131.259				
April	340.911					122.134				
May	344.790					126.935				
June	354.159					124.010				
July	338.537					135.054				
August	335.261					138.215				
September	310.487					127.611				
October	319.529					134.809				
November	293.701					128.102				
December	299.234					133.376				
<b>Total</b>	<b>3.889.172</b>	<b>597.761</b>				<b>1.512.446</b>	<b>253.801</b>			

Goods (total tonnes)



Containers (total TEU)



# CONTAINER TRAFFIC

## TEU evolution

Full-unloaded foreign	Full TEU			%		Full-loaded foreign	Full TEU			%	
	2024	2025	Diff. 25-24	Monthly	Accumulated		2024	2025	Diff. 25-24	Monthly	Accumulated
January	41.691	58.515	16.825	40,4%	40,4%	January	49.933	53.658	3.725	7,5%	7,5%
February	44.498	59.378	14.880	33,4%	36,8%	February	55.500	62.189	6.689	12,1%	9,9%
March	58.372					March	61.863				
April	57.413					April	55.227				
May	56.609					May	60.495				
June	59.082					June	54.888				
July	63.600					July	61.628				
August	66.928					August	61.470				
September	65.349					September	52.269				
October	61.771					October	62.395				
November	58.493					November	58.671				
December	58.522					December	66.436				
<b>Total</b>	<b>692.326</b>	<b>117.893</b>				<b>Total</b>	<b>700.773</b>	<b>115.846</b>			

Full-unloaded domestic	Full TEU			%		Full-loaded domestic	Full TEU			%	
	2024	2025	Diff. 25-24	Monthly	Accumulated		2024	2025	Diff. 25-24	Monthly	Accumulated
January	2.174	2.226	52	2,4%	2,4%	January	7.264	7.000	-265	-3,6%	-3,6%
February	2.269	2.523	254	11,2%	6,9%	February	7.617	8.315	698	9,2%	2,9%
March	2.280					March	8.744				
April	2.011					April	7.483				
May	2.226					May	7.606				
June	1.919					June	8.122				
July	1.988					July	7.839				
August	1.935					August	7.882				
September	1.981					September	8.012				
October	2.370					October	8.273				
November	2.091					November	8.848				
December	2.097					December	6.322				
<b>Total</b>	<b>25.339</b>	<b>4.748</b>				<b>Total</b>	<b>94.009</b>	<b>15.314</b>			

Full - Transit	Full TEU			%		Empty	Empty TEU			%	
	2024	2025	Diff. 25-24	Monthly	Accumulated		2024	2025	Diff. 25-24	Monthly	Accumulated
January	112.121	100.798	-11.323	-10,1%	-10,1%	January	82.564	69.551	-13.013	-15,8%	-15,8%
February	117.906	100.886	-17.020	-14,4%	-12,3%	February	80.377	72.727	-7.651	-9,5%	-12,7%
March	133.678					March	83.718				
April	134.361					April	84.416				
May	116.212					May	101.644				
June	140.218					June	89.932				
July	121.818					July	81.665				
August	107.920					August	89.126				
September	96.412					September	86.465				
October	97.676					October	87.044				
November	83.333					November	82.267				
December	94.686					December	71.173				
<b>Total</b>	<b>1.356.339</b>	<b>201.684</b>				<b>Total</b>	<b>1.020.388</b>	<b>142.277</b>			



# CONTAINER TRAFFIC

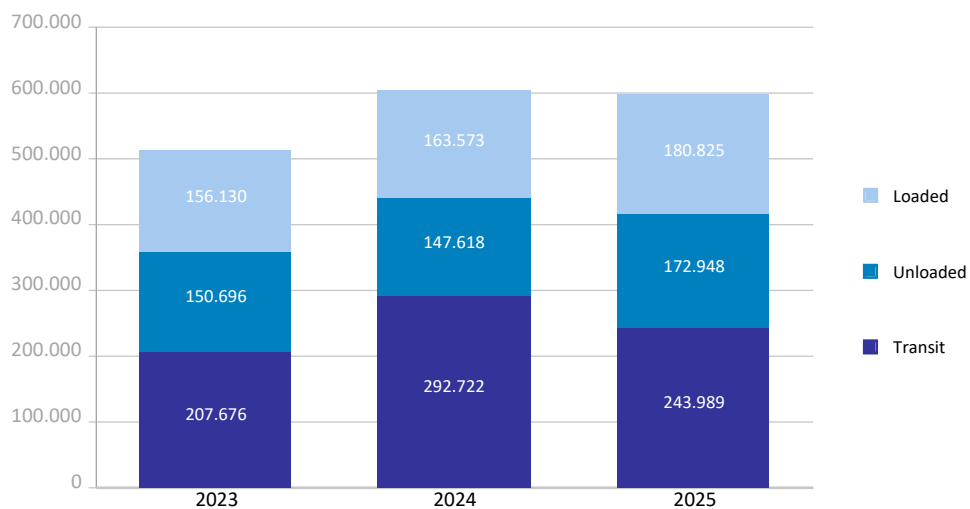
## TEU

Container traffic	Monthly accumulated 2024			Monthly accumulated 2025			%
	Domestic	Foreign	Total	Domestic	Foreign	Total	
<b>Total traffic</b>	<b>35.561</b>	<b>568.351</b>	<b>603.912</b>	<b>36.040</b>	<b>561.721</b>	<b>597.761</b>	<b>-1,0%</b>
<b>Unloaded</b>	<b>19.555</b>	<b>286.740</b>	<b>306.295</b>	<b>19.007</b>	<b>289.075</b>	<b>308.081</b>	<b>0,6%</b>
Roll On-Roll Off	3.791	3.064	6.855	3.402	886	4.288	-37,4%
Lift On-Lift Off	15.765	283.676	299.440	15.605	288.189	303.793	1,5%
<b>Loaded</b>	<b>16.006</b>	<b>281.611</b>	<b>297.617</b>	<b>17.034</b>	<b>272.647</b>	<b>289.680</b>	<b>-2,7%</b>
Roll On-Roll Off	3.893	2.946	6.839	3.742	992	4.733	-30,8%
Lift On-Lift Off	12.114	278.665	290.779	13.292	271.655	284.947	-2,0%

Breakdown by navigation and operation	Monthly accumulated 2024			Monthly accumulated 2025			%
	Domestic	Foreign	Total	Domestic	Foreign	Total	
<b>Loaded</b>	<b>16.002</b>	<b>147.571</b>	<b>163.573</b>	<b>17.034</b>	<b>163.792</b>	<b>180.825</b>	<b>10,5%</b>
Full	14.881	105.433	120.313	15.314	115.846	131.160	9,0%
Empty	1.121	42.139	43.260	1.720	47.946	49.665	14,8%
<b>Unloaded</b>	<b>19.204</b>	<b>128.414</b>	<b>147.618</b>	<b>18.740</b>	<b>154.208</b>	<b>172.948</b>	<b>17,2%</b>
Full	4.443	86.189	90.632	4.748	117.893	122.641	35,3%
Empty	14.761	42.226	56.986	13.992	36.315	50.307	-11,7%
<b>Transit</b>	<b>356</b>	<b>292.366</b>	<b>292.722</b>	<b>267</b>	<b>243.722</b>	<b>243.989</b>	<b>-16,6%</b>
Full	5	230.022	230.027	1	201.683	201.684	-12,3%
Empty	352	62.344	62.695	266	42.039	42.305	-32,5%

<b>Total traffic</b>	<b>35.561</b>	<b>568.351</b>	<b>603.912</b>	<b>36.040</b>	<b>561.721</b>	<b>597.761</b>	<b>-1,0%</b>
Full	19.328	421.643	440.971	20.063	435.422	455.484	3,3%
Empty	16.233	146.708	162.941	15.978	126.300	142.277	-12,7%
% Empty	45,6%	25,8%	<b>27,0%</b>	44,3%	22,5%	<b>23,8%</b>	
% Transit	1,0%	51,4%	<b>48,5%</b>	0,7%	43,4%	<b>40,8%</b>	

General cargo distribution by operation (TEU )

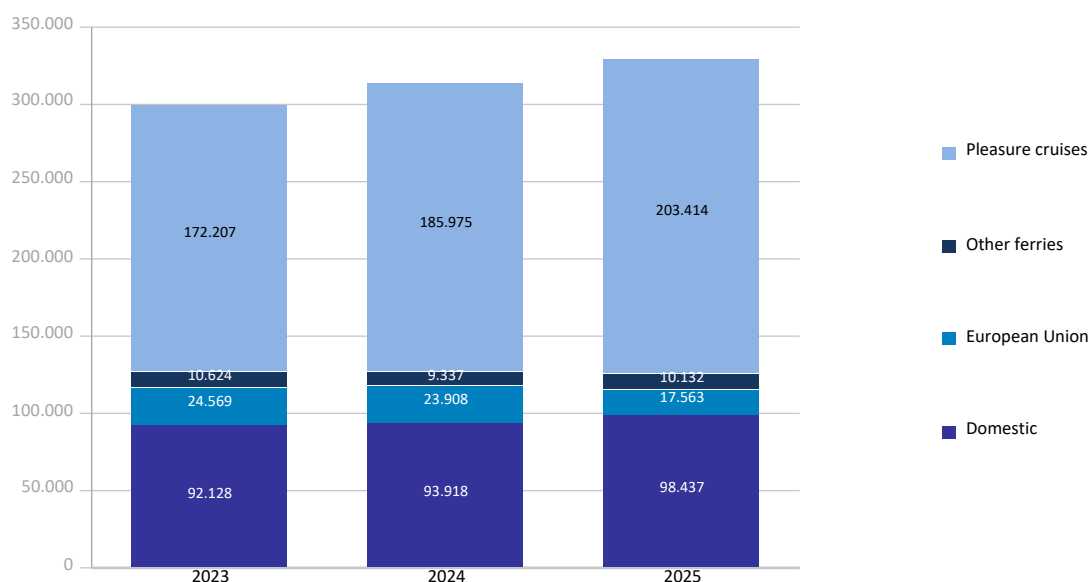


## PASSENGER TRAFFIC

Total passenger traffic (units)	Monthly accumulated				% 25-24 accum. January	% 24-23 accum. December
	2024	2025	Diff. 25-24	%		
<b>Total passengers</b>	<b>313.138</b>	<b>329.546</b>	<b>16.408</b>	<b>5,2%</b>	<b>-0,3%</b>	<b>1,7%</b>
Embarkation	106.208	116.269	10.061	9,5%	11,4%	3,9%
Disembarkation	103.189	114.564	11.375	11,0%	6,8%	4,1%
Transit	103.741	98.713	-5.028	-4,8%	-17,4%	-3,3%
<b>Regular line ferries</b>	<b>127.163</b>	<b>126.132</b>	<b>-1.031</b>	<b>-0,8%</b>	<b>-0,7%</b>	<b>0,2%</b>
Embarkation	65.727	66.577	850	1,3%	-0,1%	0,5%
Disembarkation	61.436	59.555	-1.881	-3,1%	-1,5%	-0,0%
<b>Domestic</b>	<b>93.918</b>	<b>98.437</b>	<b>4.519</b>	<b>4,8%</b>	<b>8,1%</b>	<b>4,7%</b>
Embarkation	50.780	53.119	2.339	4,6%	6,2%	5,1%
Disembarkation	43.138	45.318	2.180	5,1%	10,9%	4,3%
<b>European Union</b>	<b>23.908</b>	<b>17.563</b>	<b>-6.345</b>	<b>-26,5%</b>	<b>-33,0%</b>	<b>-7,0%</b>
Embarkation	11.329	8.300	-3.029	-26,7%	-37,2%	-7,5%
Disembarkation	12.579	9.263	-3.316	-26,4%	-29,1%	-6,6%
<b>Other ferries</b>	<b>9.337</b>	<b>10.132</b>	<b>795</b>	<b>8,5%</b>	<b>-6,6%</b>	<b>-17,2%</b>
Embarkation	3.618	5.158	1.540	42,6%	24,2%	-16,8%
Disembarkation	5.719	4.974	-745	-13,0%	-21,0%	-17,7%
<b>Pleasure cruises</b>	<b>185.975</b>	<b>203.414</b>	<b>17.439</b>	<b>9,4%</b>	<b>0,0%</b>	<b>2,4%</b>
Embarkation	40.481	49.692	9.211	22,8%	30,8%	7,1%
Disembarkation	41.753	55.009	13.256	31,7%	17,1%	7,8%
Transit	103.741	98.713	-5.028	-4,8%	-17,4%	-3,3%

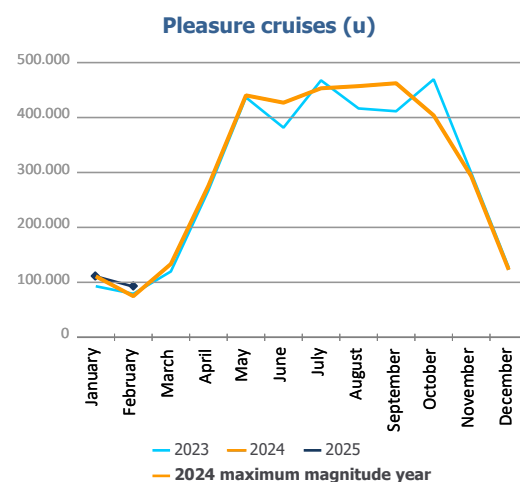
Total passenger calls (units)	Monthly accumulated				% 25-24 accum. January	% 24-23 accum. December
	2024	2025	Diff. 25-24	%		
<b>Total number of calls</b>	<b>492</b>	<b>488</b>	<b>-4</b>	<b>-0,8%</b>	<b>-4,1%</b>	<b>-5,5%</b>
<b>Regular Line ferries</b>	<b>453</b>	<b>445</b>	<b>-8</b>	<b>-1,8%</b>	<b>-4,1%</b>	<b>-6,4%</b>
<b>Pleasure cruises</b>	<b>39</b>	<b>43</b>	<b>4</b>	<b>10,3%</b>	<b>-4,0%</b>	<b>-1,6%</b>

Passenger traffic distribution (u)

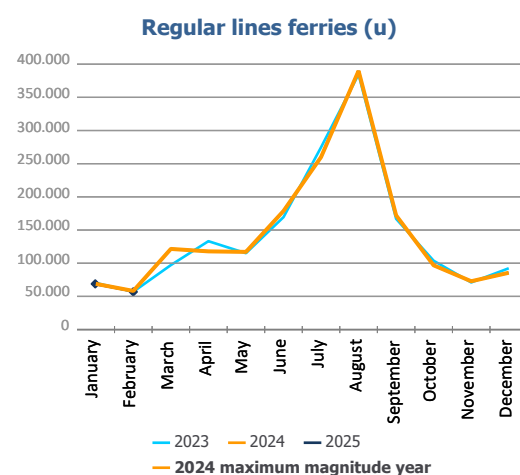


## PASSENGER CLASSIFICATION

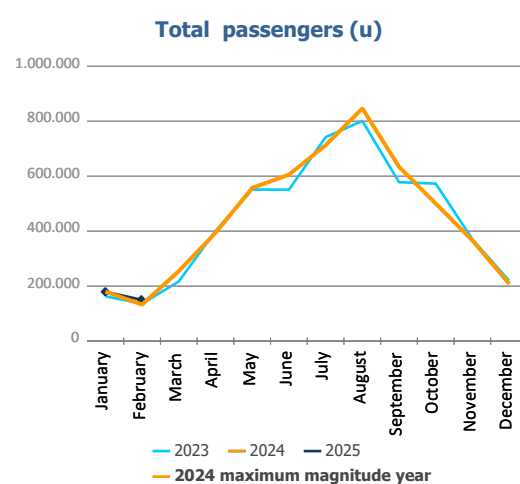
Monthly evolution of passenger traffic	Pleasure cruises			%	
	2024	2025	Diff. 25-24	Monthly	Accumulated
January	111.036	111.054	18	0,0%	0,0%
February	74.939	92.360	17.421	23,2%	9,4%
March	133.501				
April	275.893				
May	440.310				
June	427.017				
July	453.184				
August	457.134				
September	462.381				
October	403.905				
November	293.427				
December	122.958				
<b>Total</b>	<b>3.655.685</b>	<b>203.414</b>			



Monthly evolution of passenger traffic	Regular lines ferries			%	
	2024	2025	Diff. 25-24	Monthly	Accumulated
January	68.931	68.438	-493	-0,7%	-0,7%
February	58.232	57.694	-538	-0,9%	-0,8%
March	121.528				
April	117.845				
May	117.084				
June	178.722				
July	259.895				
August	389.879				
September	172.031				
October	96.842				
November	72.847				
December	85.632				
<b>Total</b>	<b>1.739.468</b>	<b>126.132</b>			



Monthly evolution of passenger traffic	Total passengers			%	
	2024	2025	Diff. 25-24	Monthly	Accumulated
January	179.967	179.492	-475	-0,3%	-0,3%
February	133.171	150.054	16.883	12,7%	5,2%
March	255.029				
April	393.738				
May	557.394				
June	605.739				
July	713.079				
August	847.013				
September	634.412				
October	500.747				
November	366.274				
December	208.590				
<b>Total</b>	<b>5.395.153</b>	<b>329.546</b>			

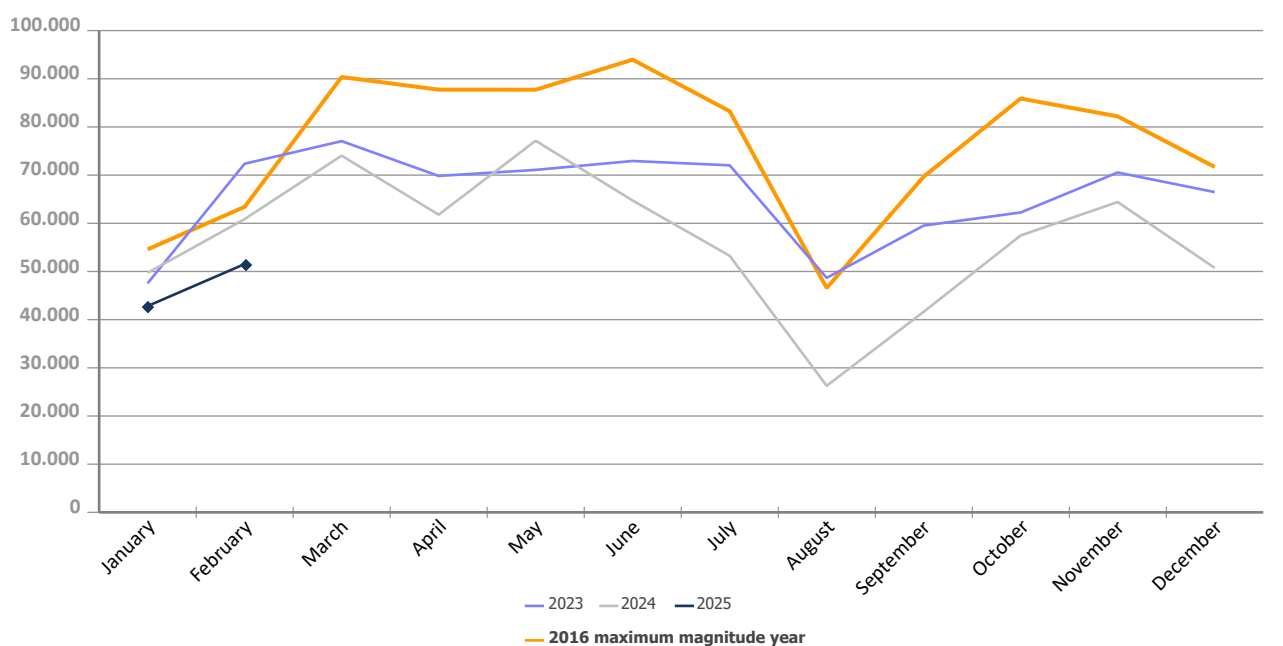


# AUTOMOBILE TRAFFIC

Total automobile traffic (units)	Monthly accumulated				% 25-24 accum. January	% 24-23 accum. December
	2024	2025	Diff. 25-24	%		
<b>Automobile traffic by navigation and operation</b>	<b>110.593</b>	<b>94.358</b>	<b>-16.235</b>	<b>-14,7%</b>	<b>-13,9%</b>	<b>-13,7%</b>
<b>Domestic</b>	<b>13.407</b>	<b>13.047</b>	<b>-360</b>	<b>-2,7%</b>	<b>7,2%</b>	<b>5,0%</b>
Loaded	11.834	11.661	-173	-1,5%	11,0%	-1,7%
Unloaded	1.573	1.386	-187	-11,9%	-14,3%	35,1%
Transit	0	0	0			-31,1%
<b>Foreign</b>	<b>97.186</b>	<b>81.311</b>	<b>-15.875</b>	<b>-16,3%</b>	<b>-16,4%</b>	<b>-16,6%</b>
Loaded	52.812	44.335	-8.477	-16,1%	-17,3%	5,5%
Unloaded	25.385	21.374	-4.011	-15,8%	-40,7%	-45,1%
Transit	18.989	15.602	-3.387	-17,8%	26,7%	-20,6%

Monthly automobile traffic (u)	Monthly		Accumulated		%	
	2024	2025	2024	2025	Monthly	Accumulated
January	49.721	42.823	49.721	42.823	-13,9%	-13,9%
February	60.872	51.535	110.593	94.358	-15,3%	-14,7%
March	74.044		184.637			
April	61.791		246.428			
May	77.134		323.562			
June	64.728		388.290			
July	53.260		441.550			
August	26.273		467.823			
September	41.628		509.451			
October	57.476		566.927			
November	64.412		631.339			
December	50.743		682.082			

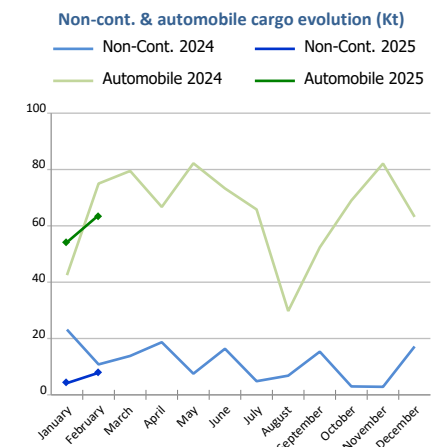
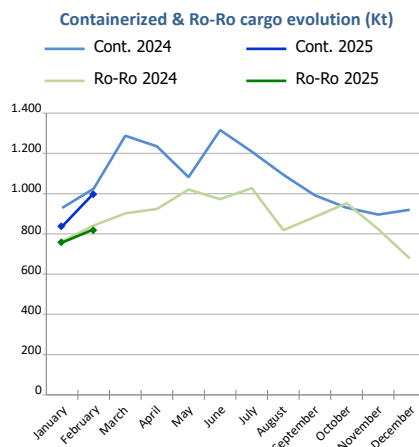
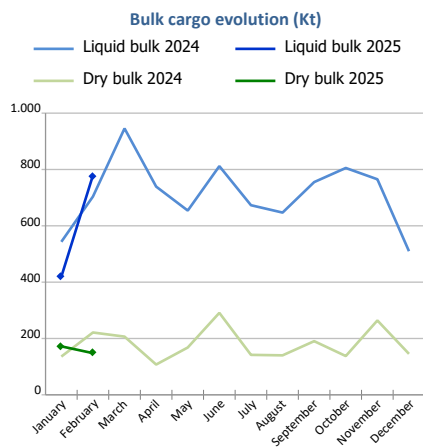
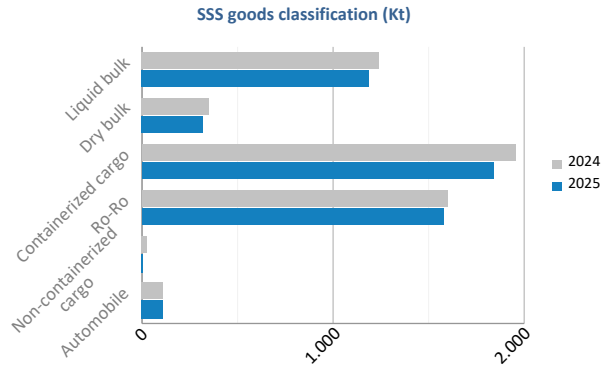
Evolution of monthly automobile traffic (u)



# SHORT SEA SHIPPING (SSS)

## SSS Goods classification

Goods classification. Tonnes	Monthly accumulated		%	% of total port traffic
	2024	2025		
Liquid bulk	1.247.060	1.198.424	-3,9%	67,0%
Dry bulk	357.024	319.959	-10,4%	62,7%
Containerized cargo	1.954.027	1.838.938	-5,9%	31,7%
Ro-Ro	1.604.543	1.579.644	-1,6%	100,0%
Non-containerized cargo	33.973	11.997	-64,7%	22,9%
Automobile	117.504	117.933	0,4%	77,4%
<b>Total</b>	<b>5.314.130</b>	<b>5.066.896</b>	<b>-4,7%</b>	<b>51,3%</b>



SSS General Cargo	Spanish Islands			SSS Remainder			TOTAL		
	2024	2025	%	2024	2025	%	2024	2025	%
<b>Containerized cargo</b>	154.949	165.477	6,8%	1.799.078	1.673.460	-7,0%	<b>1.954.027</b>	<b>1.838.938</b>	<b>-5,9%</b>
O/D	148.801	158.744	6,7%	616.229	522.003	-15,3%	<b>765.029</b>	<b>680.747</b>	<b>-11,0%</b>
Transit	6.149	6.733	9,5%	1.182.849	1.151.457	-2,7%	<b>1.188.998</b>	<b>1.158.190</b>	<b>-2,6%</b>
<b>Ro-Ro</b>	818.531	927.134	13,3%	786.012	652.510	-17,0%	<b>1.604.543</b>	<b>1.579.644</b>	<b>-1,6%</b>
O/D	818.519	927.134	13,3%	709.385	572.337	-19,3%	<b>1.527.904</b>	<b>1.499.471</b>	<b>-1,9%</b>
Transit	12	0	0,0%	76.627	80.174	4,6%	<b>76.639</b>	<b>80.174</b>	<b>4,6%</b>
<b>Non-cont. cargo</b>	111	270	142,7%	33.862	11.727	-65,4%	<b>33.973</b>	<b>11.997</b>	<b>-64,7%</b>
O/D	111	270	142,7%	33.246	9.767	-70,6%	<b>33.357</b>	<b>10.036</b>	<b>-69,9%</b>
Transit	0	0	0,0%	616	1.961	218,3%	<b>616</b>	<b>1.961</b>	<b>218,3%</b>
<b>Automobile</b>	19.467	22.307	14,6%	98.036	95.627	-2,5%	<b>117.504</b>	<b>117.933</b>	<b>0,4%</b>
O/D	19.467	22.307	14,6%	79.020	76.598	-3,1%	<b>98.488</b>	<b>98.904</b>	<b>0,4%</b>
Transit	0	0	0,0%	19.016	19.029	0,1%	<b>19.016</b>	<b>19.029</b>	<b>0,1%</b>



### Short Sea Shipping (SSS):

The transport of cargo/goods and passengers between ports situated in the European Union or between these ports and non-European ports with a coastline in seas bordering Europe. This applies to cargo either originating from or is destined for these countries (in accordance with the European Shortsea Network).

### Motorways of the sea (MoS):

Short Sea Shipping services as an alternative to road transport and which fulfill the following criteria: minimum frequency of 3 calls per week and calling at a maximum of 3 different ports.

### General cargo:

Including containerized cargo, non-containerized cargo, Ro-Ro and automobiles.

### Containerized cargo:

Excluding container cargo by Ro-Ro.

### Non-containerized cargo:

General non-containerized goods other than Ro-Ro and excluding automobiles.

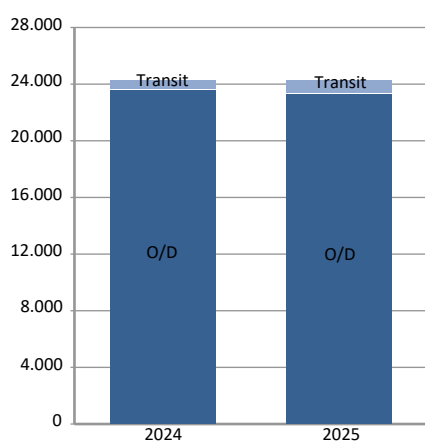
### Ro-Ro:

General cargo carried in UTI's. Excluding automobiles.

## SHORT SEA SHIPPING (SSS)

SSS General cargo	Spanish Islands			SSS Remainder			TOTAL		
	2024	2025	%	2024	2025	%	2024	2025	%
<b>Containerized cargo. TEU</b>	24.312	24.237	-0,3%	175.876	158.485	-9,9%	<b>200.188</b>	<b>182.722</b>	<b>-8,7%</b>
<b>O/D</b>	23.569	23.336	-1,0%	82.183	59.371	-27,8%	<b>105.751</b>	<b>82.706</b>	<b>-21,8%</b>
Full	14.428	15.650	8,5%	42.654	35.922	-15,8%	<b>57.081</b>	<b>51.572</b>	<b>-9,7%</b>
Empty	9.141	7.686	-15,9%	39.529	23.449	-40,7%	<b>48.670</b>	<b>31.135</b>	<b>-36,0%</b>
<b>Transit</b>	744	902	21,3%	93.693	99.115	5,8%	<b>94.437</b>	<b>100.016</b>	<b>5,9%</b>
Full	540	609	12,8%	87.389	90.123	3,1%	<b>87.928</b>	<b>90.732</b>	<b>3,2%</b>
Empty	204	293	43,6%	6.305	8.992	42,6%	<b>6.509</b>	<b>9.285</b>	<b>42,7%</b>
<b>Ro-Ro. UTI</b>	36.608	38.312	4,7%	27.503	23.442	-14,8%	<b>64.111</b>	<b>61.754</b>	<b>-3,7%</b>
Full	23.478	24.065	2,5%	24.639	20.860	-15,3%	<b>48.117</b>	<b>44.925</b>	<b>-6,6%</b>
Empty	13.130	14.247	8,5%	2.864	2.582	-9,8%	<b>15.994</b>	<b>16.829</b>	<b>5,2%</b>
<b>Automobile units</b>	13.391	13.046	-2,6%	70.216	64.310	-8,4%	<b>83.607</b>	<b>77.356</b>	<b>-7,5%</b>
<b>O/D</b>	13.391	13.046	-2,6%	57.340	51.854	-9,6%	<b>70.731</b>	<b>64.900</b>	<b>-8,2%</b>
<b>Transit</b>				12.876	12.456	-3,3%	<b>12.876</b>	<b>12.456</b>	<b>-3,3%</b>

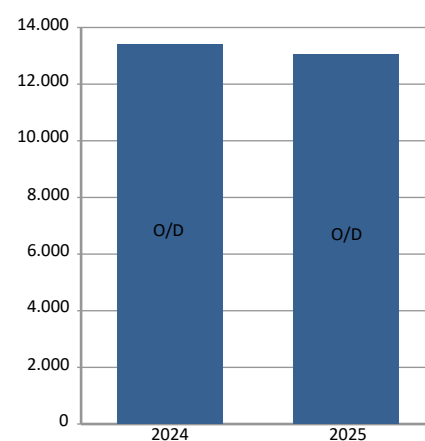
Cont. TEU (Spanish Islands)



Ro-Ro. UTI (Spanish Islands)

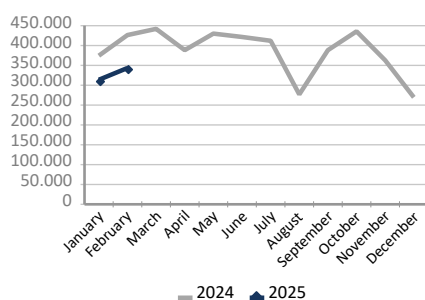


Automobile. Units (Spanish Islands)

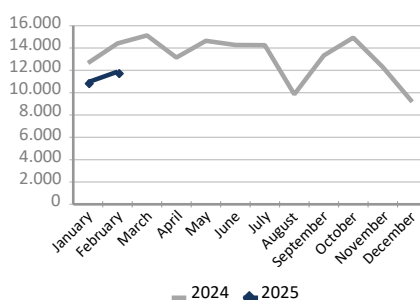


Motorways of the Sea (MoS)	EU			Non-EU			TOTAL		
	2024	2025	%	2024	2025	%	2024	2025	%
<b>Tonnes</b>	799.371	655.514	-18,0%	1.509	1.597	5,8%	<b>800.881</b>	<b>657.111</b>	<b>-18,0%</b>
Loaded	436.152	352.022	-19,3%	1.294	1.559	20,5%	<b>437.445</b>	<b>353.581</b>	<b>-19,2%</b>
Unloaded	363.220	303.492	-16,4%	216	38	-82,3%	<b>363.436</b>	<b>303.530</b>	<b>-16,5%</b>
<b>UTI</b>	27.007	22.763	-15,7%	59	52	-11,9%	<b>27.066</b>	<b>22.815</b>	<b>-15,7%</b>
Loaded	13.878	11.673	-15,9%	51	50	-2,0%	<b>13.929</b>	<b>11.723</b>	<b>-15,8%</b>
Unloaded	13.129	11.090	-15,5%	8	2	-75,0%	<b>13.137</b>	<b>11.092</b>	<b>-15,6%</b>
<b>Automobile units</b>	20.960	16.693	-20,4%	19	40	110,5%	<b>20.979</b>	<b>16.733</b>	<b>-20,2%</b>
Loaded	20.528	15.980	-22,2%	19	40	110,5%	<b>20.547</b>	<b>16.020</b>	<b>-22,0%</b>
Unloaded	432	713	65,0%	0	0		<b>432</b>	<b>713</b>	<b>65,0%</b>

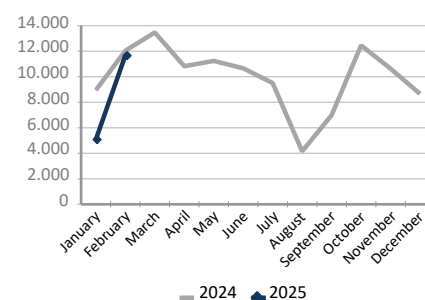
MoS. Tonnes



MoS. UTI



MoS. Automobile units

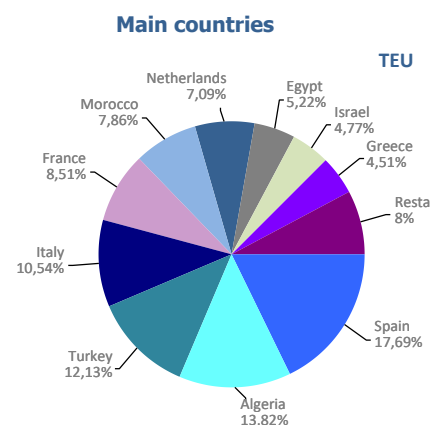


**UTI**: All those means of unitization, self-propelled or otherwise, that are directly or indirectly used as a means of land transport (e.g. trailers, platforms, trucks, freezer trucks, etc.) are considered as UTI. Containers are not considered to be included, except those that are handled by an equipment transport of the own terminal.

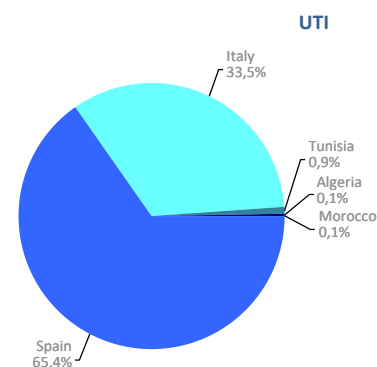
# SHORT SEA SHIPPING (SSS)

## SSS Ranking countries by mode of packaging

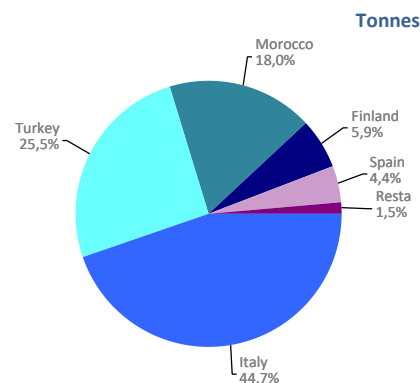
Containerized cargo. TEU	Monthly accumulated				% of total 2025
	2024	2025	Diff. 25-24	%	
<b>Total</b>	<b>200.188</b>	<b>182.722</b>	<b>-17.466</b>	<b>-8,7%</b>	<b>100%</b>
Spain	35.405	32.331	-3.074	-8,7%	17,7%
Algeria	38.102	25.254	-12.848	-33,7%	13,8%
Turkey	27.814	22.165	-5.649	-20,3%	12,1%
Italy	16.361	19.257	2.896	17,7%	10,5%
France	11.277	15.555	4.278	37,9%	8,5%
Morocco	20.316	14.361	-5.956	-29,3%	7,9%
Netherlands	12.146	12.957	812	6,7%	7,1%
Egypt	10.161	9.532	-629	-6,2%	5,2%
Israel	4.187	8.724	4.537	108,4%	4,8%
Greece	6.692	8.241	1.549	23,1%	4,5%
Remainder	17.729	14.348	-3.382	-19,1%	7,9%



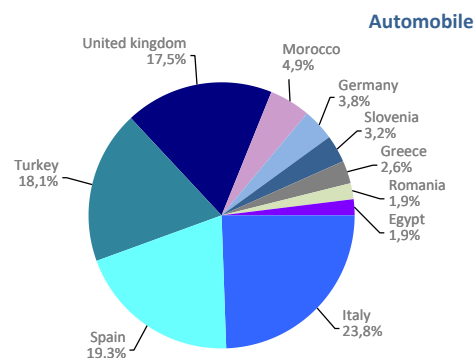
Ro-Ro. UTI	Monthly accumulated				% of total 2025
	2024	2025	Diff. 25-24	%	
<b>Total</b>	<b>64.111</b>	<b>61.754</b>	<b>-2.357</b>	<b>-3,7%</b>	<b>100%</b>
Spain	38.181	40.370	2.189	5,7%	65,4%
Italy	25.430	20.705	-4.725	-18,6%	33,5%
Tunisia	417	571	154	36,9%	0,9%
Algeria	0	56	56	0,0%	0,1%
Morocco	73	52	-21	-28,8%	0,1%
Remainder	10	0	-10		0,0%



Non-cont. cargo. Tonnes	Monthly accumulated				% of total 2025
	2024	2025	Diff. 25-24	%	
<b>Total</b>	<b>33.973</b>	<b>11.997</b>	<b>-21.976</b>	<b>-64,7%</b>	<b>100%</b>
Italy	4.372	5.362	990	22,7%	44,7%
Turkey	10.446	3.059	-7.386	-70,7%	25,5%
Morocco	894	2.157	1.263	141,2%	18,0%
Finland	0	709	709	0,0%	5,9%
Spain	129	532	403	312,1%	4,4%
Remainder	18.132	178	-17.954	-99,0%	1,5%



Automobile. Units	Monthly accumulated				% of total 2025
	2024	2025	Diff. 25-24	%	
<b>Total</b>	<b>83.607</b>	<b>77.356</b>	<b>-6.251</b>	<b>-7,5%</b>	<b>100%</b>
Italy	23.011	18.407	-4.604	-20,0%	23,8%
Spain	14.616	14.957	341	2,3%	19,3%
Turkey	10.399	13.980	3.581	34,4%	18,1%
United kingdom	17.560	13.553	-4.007	-22,8%	17,5%
Morocco	5.978	3.817	-2.161	-36,1%	4,9%
Germany	0	2.956	2.956	0,0%	3,8%
Slovenia	1.197	2.457	1.260	105,3%	3,2%
Greece	3.386	2.014	-1.372	-40,5%	2,6%
Romania	1.927	1.495	-432	-22,4%	1,9%
Egypt	373	1.488	1.115	298,9%	1,9%
Remainder	5.160	2.232	-2.928	-56,7%	2,9%

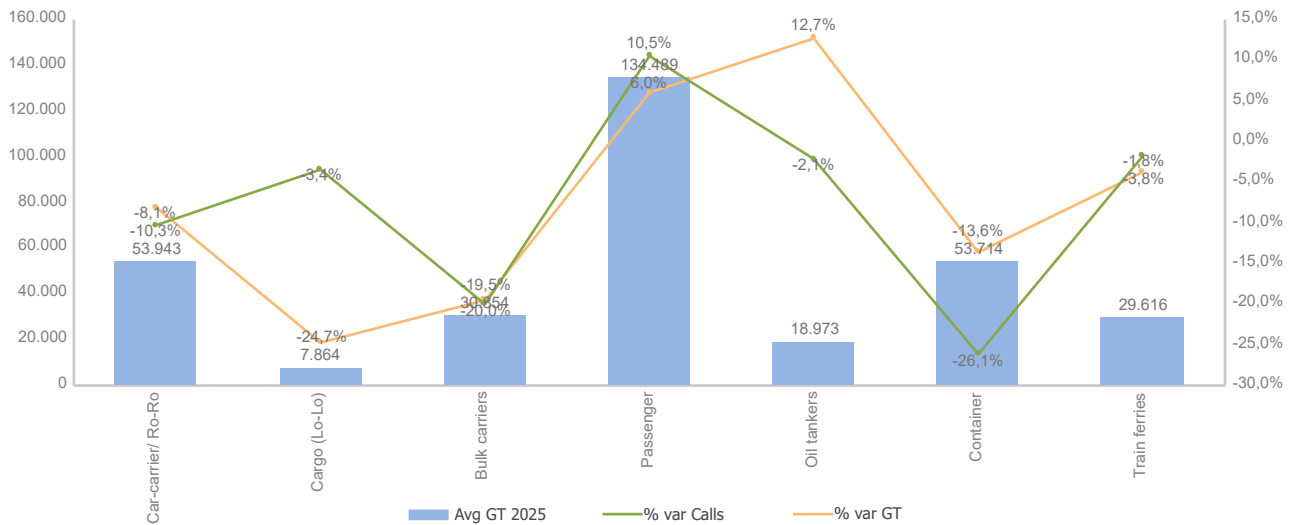


# VESSELS TRAFFIC

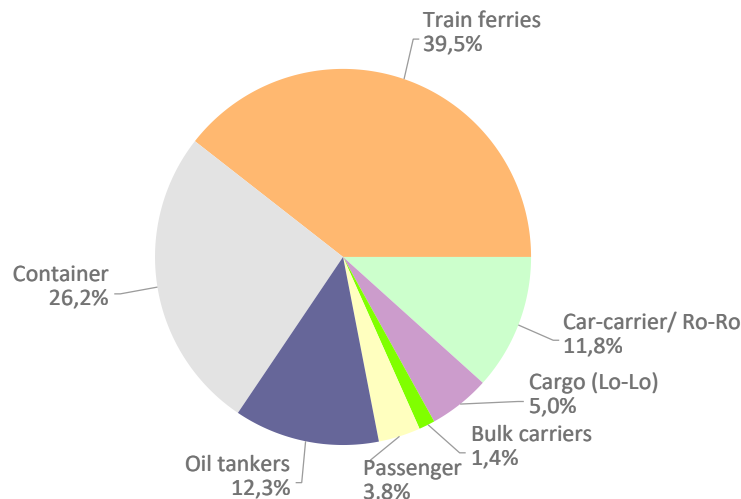
Vessels traffic	Monthly accumulated		
	2024	2025	%
Number of calls	1.243	1.112	-10,5%
Gross Tonnage (GT)	48.124.439	44.880.592	-6,7%
Average Gross Tonnage	38.716	40.360	4,2%

Type of vessels	Monthly accumulated						Avg GT	
	2024		2025		%		2024	2025
	Calls	GT	Calls	GT	Calls	GT		
<b>Total</b>	<b>1.243</b>	<b>48.124.439</b>	<b>1.112</b>	<b>44.880.592</b>	<b>-10,5%</b>	<b>-6,7%</b>	<b>38.716</b>	<b>40.360</b>
Car-carrier/ Ro-Ro	146	7.688.598	131	7.066.594	-10,3%	-8,1%	52.662	53.943
Cargo (Lo-Lo)	58	584.987	56	440.403	-3,4%	-24,7%	10.086	7.864
Bulk carriers	20	613.297	16	493.666	-20,0%	-19,5%	30.665	30.854
Passenger	38	5.327.502	42	5.648.558	10,5%	6,0%	140.197	134.489
Oil tankers	140	2.306.498	137	2.599.266	-2,1%	12,7%	16.475	18.973
Container	394	18.095.150	291	15.630.654	-26,1%	-13,6%	45.927	53.714
Train ferries	447	13.508.407	439	13.001.451	-1,8%	-3,8%	30.220	29.616

Average GT by type of vessel and variation of calls and GT



Distribution by type of vessel

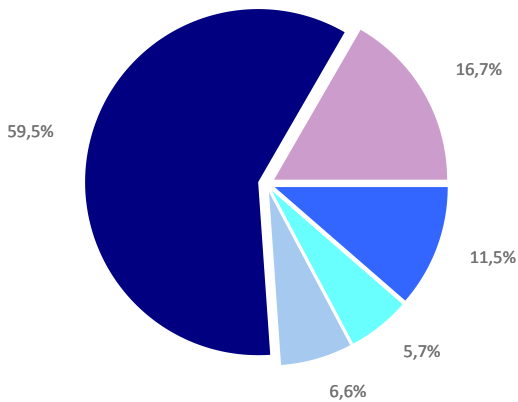




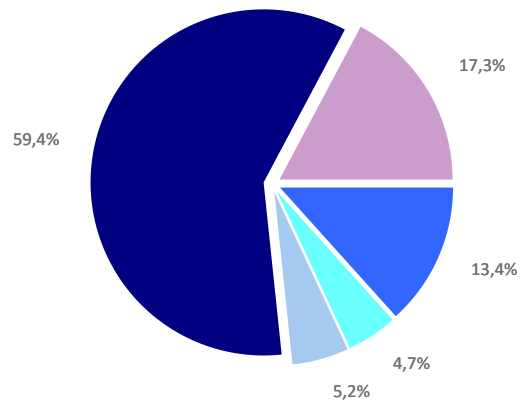
# GOODS TRAFFIC

Type of packaging and navigation	Monthly accumulated 2024			Monthly accumulated 2025			%
	Domestic	Foreign	Total	Domestic	Foreign	Total	
<b>Hydrocarbons</b>	<b>104.034</b>	<b>1.082.780</b>	<b>1.186.814</b>	<b>34.325</b>	<b>1.293.317</b>	<b>1.327.642</b>	<b>11,9%</b>
Incoming	61.660	900.056	<b>961.715</b>	26.699	1.072.792	<b>1.099.491</b>	14,3%
Outgoing	42.374	182.724	<b>225.099</b>	7.625	220.526	<b>228.151</b>	1,4%
<b>Other liquid bulk</b>	<b>93.691</b>	<b>498.145</b>	<b>591.836</b>	<b>40.777</b>	<b>421.397</b>	<b>462.174</b>	<b>-21,9%</b>
Incoming	67.029	348.324	<b>415.352</b>	33.410	351.491	<b>384.902</b>	-7,3%
Outgoing	26.662	149.822	<b>176.483</b>	7.367	69.906	<b>77.272</b>	-56,2%
<b>Dry bulk</b>	<b>14.388</b>	<b>672.380</b>	<b>686.768</b>	<b>14.372</b>	<b>495.911</b>	<b>510.283</b>	<b>-25,7%</b>
Incoming	14.388	450.862	<b>465.250</b>	10.396	324.646	<b>335.042</b>	-28,0%
Outgoing	0	221.518	<b>221.518</b>	3.976	171.265	<b>175.241</b>	-20,9%
<b>Containerized cargo</b>	<b>219.996</b>	<b>5.941.405</b>	<b>6.161.401</b>	<b>226.616</b>	<b>5.643.857</b>	<b>5.870.473</b>	<b>-4,7%</b>
Incoming	71.691	2.865.449	<b>2.937.140</b>	75.668	2.782.480	<b>2.858.148</b>	-2,7%
Outgoing	148.305	3.075.956	<b>3.224.261</b>	150.948	2.861.377	<b>3.012.325</b>	-6,6%
<b>Non-containerized cargo</b>	<b>782.374</b>	<b>950.586</b>	<b>1.732.960</b>	<b>916.205</b>	<b>797.455</b>	<b>1.713.660</b>	<b>-1,1%</b>
Incoming	260.571	472.615	<b>733.186</b>	287.505	390.737	<b>678.242</b>	-7,5%
Outgoing	521.803	477.970	<b>999.774</b>	628.700	406.718	<b>1.035.418</b>	3,6%
<b>Total general cargo</b>	<b>1.002.370</b>	<b>6.891.990</b>	<b>7.894.361</b>	<b>1.142.821</b>	<b>6.441.313</b>	<b>7.584.133</b>	<b>-3,9%</b>
Incoming	332.262	3.338.064	<b>3.670.326</b>	363.173	3.173.217	<b>3.536.390</b>	-3,6%
Outgoing	670.108	3.553.926	<b>4.224.034</b>	779.648	3.268.095	<b>4.047.743</b>	-4,2%
<b>Total throughput (tonnes)</b>	<b>1.214.483</b>	<b>9.145.295</b>	<b>10.359.778</b>	<b>1.232.294</b>	<b>8.651.939</b>	<b>9.884.233</b>	<b>-4,6%</b>
Incoming	475.338	5.037.305	5.512.644	433.678	4.922.146	5.355.824	-2,8%
Outgoing	739.145	4.107.990	4.847.134	798.616	3.729.792	4.528.408	-6,6%
<b>Container traffic (TEU)</b>	<b>35.561</b>	<b>568.351</b>	<b>603.912</b>	<b>36.040</b>	<b>561.721</b>	<b>597.761</b>	<b>-1,0%</b>
Incoming	19.555	286.740	306.295	19.007	289.075	308.081	0,6%
Outgoing	16.006	281.611	297.617	17.034	272.647	289.680	-2,7%

Distribution by type of packaging 2024

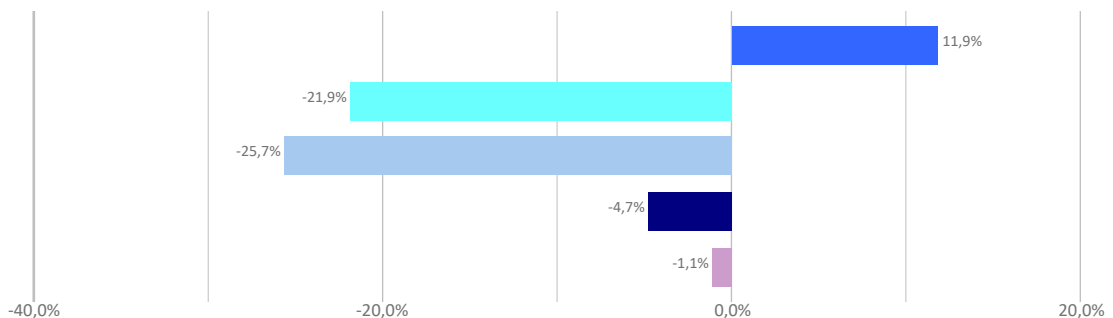


Distribution by type of packaging 2025



Hydrocarbons    Liquid bulk    Dry bulk    Containerized cargo    Non Containerized cargo

Annual growth by type of packaging



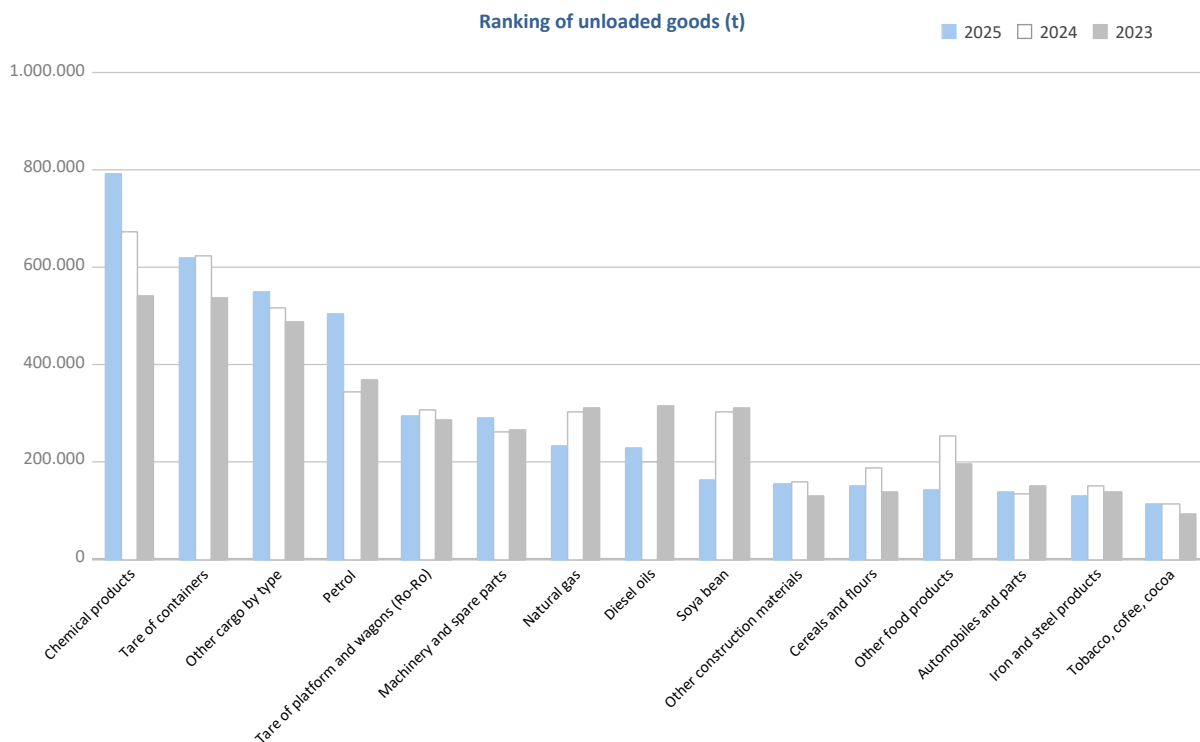
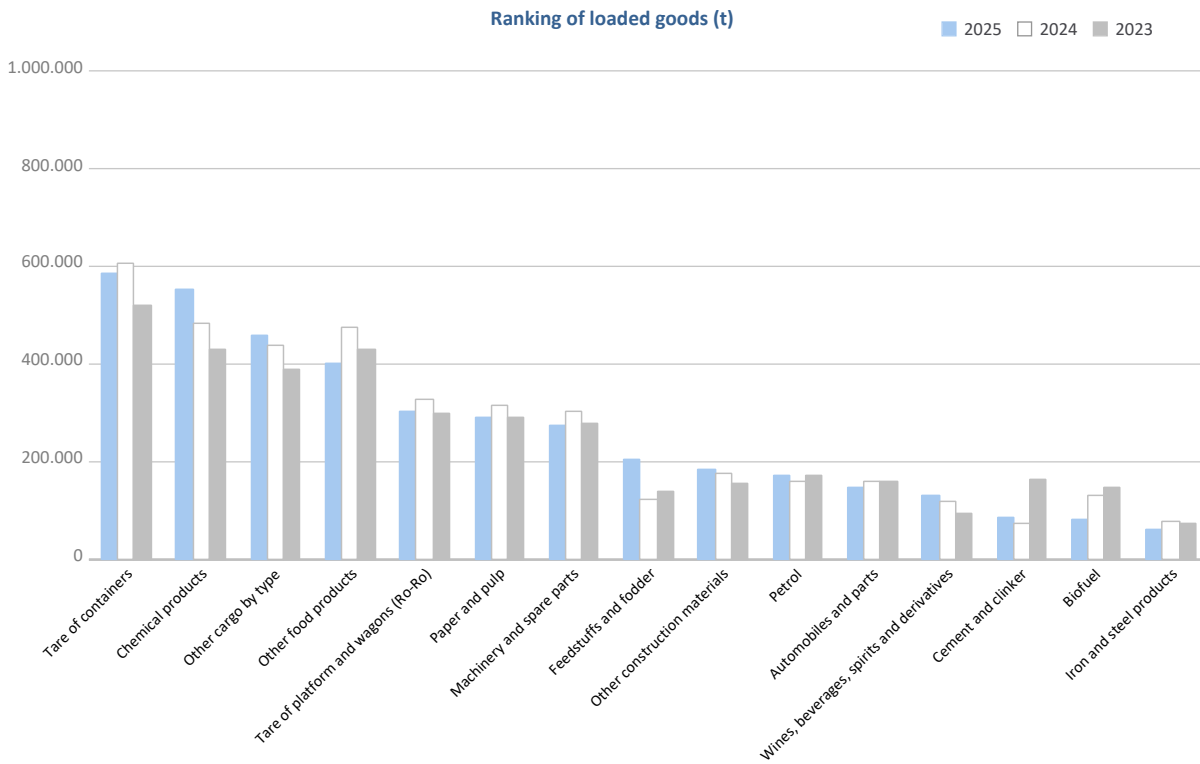
## GOODS TRAFFIC

Goods by classification 4.3.7.	Monthly accumulated				% of total accum. 2025
	2024	2025	Diff. 25-24	%	
<b>Tonnes</b>	<b>10.359.778</b>	<b>9.884.233</b>	<b>-475.546</b>	<b>-4,6%</b>	<b>100%</b>
<b>Energy</b>	<b>1.444.489</b>	<b>1.536.044</b>	<b>91.555</b>	<b>6,3%</b>	<b>15,5%</b>
Crude oil	50	112	62	124,0%	0,0%
Fuel oil	90.962	85.904	-5.058	-5,6%	0,9%
Diesel oils	229.404	271.630	42.226	18,4%	2,7%
Petrol	503.815	673.967	170.153	33,8%	6,8%
Other petroleum products	40.410	63.814	23.404	57,9%	0,6%
Petroleum fuel gasses	10.367	13.623	3.256	31,4%	0,1%
Coal	12.083	5.533	-6.550	-54,2%	0,1%
Natural gas	332.080	244.069	-88.011	-26,5%	2,5%
Biofuel	225.318	177.392	-47.925	-21,3%	1,8%
<b>Iron, steel and metallurgical products</b>	<b>494.552</b>	<b>422.831</b>	<b>-71.720</b>	<b>-14,5%</b>	<b>4,3%</b>
Iron ore	2.041	7.236	5.195	254,6%	0,1%
Other minerals and metallic waste	97.804	90.145	-7.658	-7,8%	0,9%
Scrap iron	101.507	53.187	-48.320	-47,6%	0,5%
Iron and steel products	227.829	193.718	-34.110	-15,0%	2,0%
Other metallurgical products	65.372	78.544	13.172	20,1%	0,8%
<b>Non-metallic minerals</b>	<b>191.568</b>	<b>105.958</b>	<b>-85.610</b>	<b>-44,7%</b>	<b>1,1%</b>
Common salt	80.922	46.014	-34.908	-43,1%	0,5%
Other non-metallic minerals	110.646	59.944	-50.702	-45,8%	0,6%
<b>Fertilizers</b>	<b>111.521</b>	<b>101.299</b>	<b>-10.222</b>	<b>-9,2%</b>	<b>1,0%</b>
Phosphates	0	1.149	1.149	0,0%	0,0%
Potashes	75.804	59.517	-16.286	-21,5%	0,6%
Natural/artificial fertilizer	35.717	40.633	4.916	13,8%	0,4%
<b>Chemicals</b>	<b>1.158.222</b>	<b>1.345.581</b>	<b>187.359</b>	<b>16,2%</b>	<b>13,6%</b>
Chemical products	1.158.222	1.345.581	187.359	16,2%	13,6%
<b>Construction materials</b>	<b>419.159</b>	<b>430.133</b>	<b>10.975</b>	<b>2,6%</b>	<b>4,4%</b>
Asphalt	1.664	945	-719	-43,2%	0,0%
Cement and clinker	81.965	88.264	6.299	7,7%	0,9%
Other construction materials	335.530	340.924	5.394	1,6%	3,4%
<b>Agriculture, livestock and food</b>	<b>2.279.887</b>	<b>1.808.134</b>	<b>-471.752</b>	<b>-20,7%</b>	<b>18,3%</b>
Cereals and flours	238.775	165.419	-73.356	-30,7%	1,7%
Soya bean	351.149	164.076	-187.073	-53,3%	1,7%
Fruits, vegetables, pulses	139.067	77.750	-61.317	-44,1%	0,8%
Wines, beverages, spirits and derivatives	157.327	194.543	37.216	23,7%	2,0%
Canned goods	47.920	60.182	12.262	25,6%	0,6%
Tobacco, coffee, cocoa	169.785	158.042	-11.742	-6,9%	1,6%
Oils and fats	190.804	155.723	-35.080	-18,4%	1,6%
Other food products	728.253	544.955	-183.297	-25,2%	5,5%
Frozen fish	92.507	59.942	-32.565	-35,2%	0,6%
Feedstuffs and fodder	164.302	227.501	63.199	38,5%	2,3%
<b>Other cargo</b>	<b>2.100.732</b>	<b>2.044.925</b>	<b>-55.807</b>	<b>-2,7%</b>	<b>20,7%</b>
Timber	109.487	87.467	-22.020	-20,1%	0,9%
Paper and pulp	473.033	383.933	-89.100	-18,8%	3,9%
Machinery and spare parts	563.528	564.940	1.412	0,3%	5,7%
Other cargo by type	954.684	1.008.584	53.900	5,6%	10,2%
<b>Vehicles and transport parts</b>	<b>2.159.649</b>	<b>2.089.327</b>	<b>-70.322</b>	<b>-3,3%</b>	<b>21,1%</b>
Automobiles and parts	294.736	284.549	-10.187	-3,5%	2,9%
Tare of platform and wagons (Ro-Ro)	635.182	598.885	-36.296	-5,7%	6,1%
Tare of containers	1.229.732	1.205.893	-23.839	-1,9%	12,2%

# GOODS TRAFFIC

## Goods by classification 4.3.7.

### Ranking of goods (tonnes)

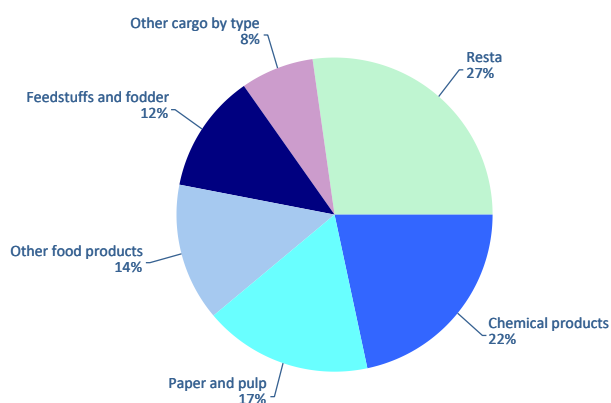


# GOODS TRAFFIC

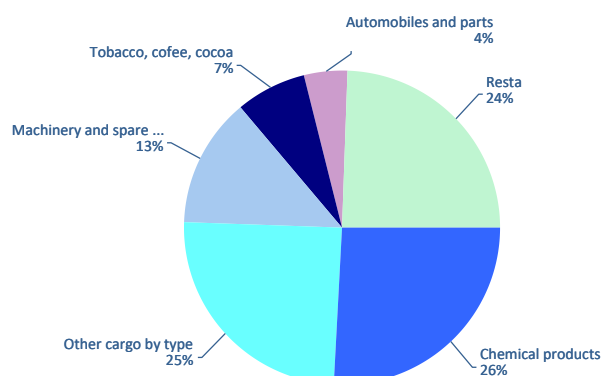
## Containerized goods by classification 4.3.7. (Tares & transits not included)

Containerized goods classification	Loaded			Unloaded			Total monthly accumulated		
	2024	2025	%	2024	2025	%	2024	2025	%
<b>Total tonnes (tares &amp; transits not included)</b>	<b>1.256.578</b>	<b>1.403.550</b>	<b>11,7%</b>	<b>829.975</b>	<b>1.075.070</b>	<b>29,5%</b>	<b>2.086.553</b>	<b>2.478.621</b>	<b>18,8%</b>
Chemical products	288.067	303.050	5,2%	229.357	277.675	21,1%	517.424	580.725	12,2%
Other cargo by type	102.908	106.164	3,2%	187.683	266.569	42,0%	290.590	372.733	28,3%
Paper and pulp	196.772	243.979	24,0%	29.111	27.434	-5,8%	225.884	271.413	20,2%
Machinery and spare parts	70.047	65.835	-6,0%	95.337	142.681	49,7%	165.383	208.515	26,1%
Other food products	200.455	196.780	-1,8%	8.633	8.149	-5,6%	209.088	204.929	-2,0%
Feedstuffs and fodder	83.448	173.408	107,8%	12.383	4.826	-61,0%	95.831	178.233	86,0%
Other construction materials	44.411	50.370	13,4%	28.658	43.137	50,5%	73.070	93.507	28,0%
Tobacco, cofee, cocoa	12.351	13.093	6,0%	62.509	78.371	25,4%	74.860	91.465	22,2%
Iron and steel products	25.089	23.052	-8,1%	33.530	45.403	35,4%	58.618	68.455	16,8%
Automobiles and parts	19.392	19.031	-1,9%	32.623	47.865	46,7%	52.015	66.897	28,6%
Wines, beverages, spirits and derivatives	58.306	56.889	-2,4%	5.662	7.728	36,5%	63.968	64.617	1,0%
Other minerals and metallic waste	31.528	35.982	14,1%	3.679	9.832	167,2%	35.207	45.814	30,1%
Other metallurgical products	11.623	11.449	-1,5%	18.502	21.395	15,6%	30.126	32.845	9,0%
Canned goods	10.393	12.093	16,4%	10.940	19.062	74,2%	21.333	31.154	46,0%
Fruits, vegetables, pulses	5.451	9.047	66,0%	21.316	17.296	-18,9%	26.767	26.343	-1,6%
Oils and fats	27.793	19.271	-30,7%	5.688	4.524	-20,5%	33.481	23.795	-28,9%
Other non-metallic minerals	18.693	11.680	-37,5%	12.257	11.740	-4,2%	30.950	23.420	-24,3%
Biofuel	16.339	17.254	5,6%	3.374	6.091	80,5%	19.713	23.345	18,4%
Scrap iron	3.771	4.078	8,1%	4.119	7.864	90,9%	7.890	11.942	51,4%
Cereals and flours	6.053	6.851	13,2%	3.965	5.010	26,4%	10.018	11.862	18,4%
Natural/artificial fertilizer	7.022	6.557	-6,6%	3.682	2.589	-29,7%	10.704	9.146	-14,6%
Frozen fish	405	294	-27,3%	5.499	8.362	52,1%	5.904	8.656	46,6%
Timber	967	2.314	139,3%	3.429	4.371	27,4%	4.396	6.684	52,1%
Common salt	5.853	4.746	-18,9%	331	421	27,1%	6.184	5.167	-16,4%
Other petroleum products	3.482	3.224	-7,4%	1.577	1.812	14,9%	5.058	5.036	-0,4%
Petroleum fuel gasses	901	3.039	237,1%	104	51	-51,0%	1.005	3.089	207,3%
Coal	234	7	-97,1%	2.278	2.881	26,5%	2.512	2.888	15,0%
Cement and clinker	2.589	2.209	-14,7%	0	301		2.589	2.510	-3,1%
Fuel oil	1.342	1.444	7,6%	1.764	662	-62,5%	3.106	2.106	-32,2%
Soya bean	2	116	5805,9%	1.263	576	-54,4%	1.265	692	-45,3%
Potashes	52	63	21,2%	646	297	-54,1%	698	360	-48,4%
Asphalt	837	180	-78,5%	0	22		837	202	-75,9%
Phosphates	0	0		0	49		0	49	
Petrol	3	1	-72,3%	22	26	16,3%	25	27	6,9%
Crude oil	0	0		50	0		50	0	
Iron ore	0	0		2	0		2	0	

Distribution of main goods Loaded 2025



Distribution of main goods Unloaded 2025

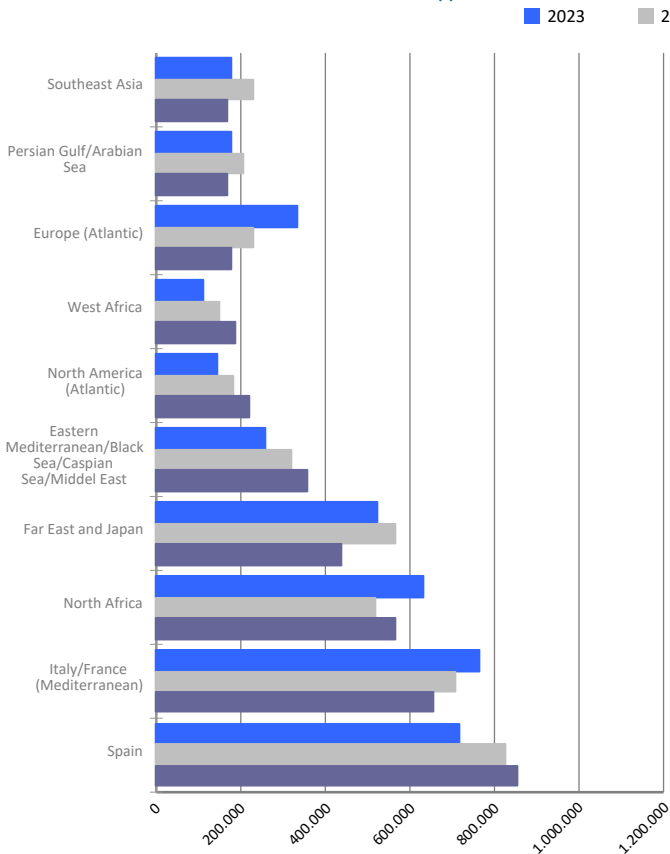


# MARITIME TRAFFIC BY ORIGIN/DESTINATION

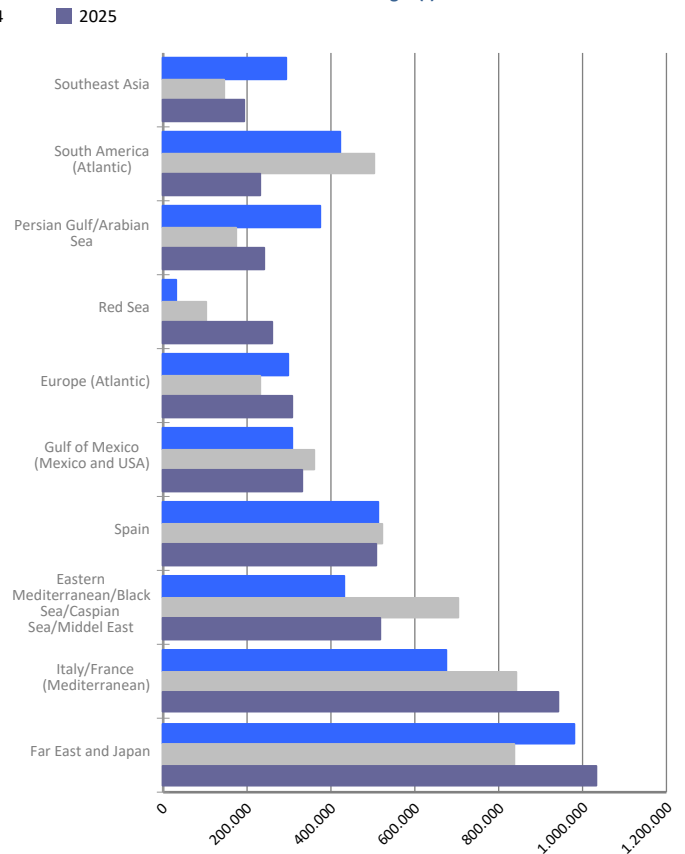
## Geographical areas. Tonnes

Geographical areas	Monthly accumulated				% of total accum. 2025
	2024	2025	Diff. 25-24	%	
<b>Tonnes</b>	<b>10.359.778</b>	<b>9.884.233</b>	<b>-475.546</b>	<b>-4,6%</b>	<b>100%</b>
Italy/France (Mediterranean)	1.550.964	1.594.480	43.516	2,8%	16,1%
Far East and Japan	1.403.548	1.473.160	69.612	5,0%	14,9%
Spain	1.348.603	1.364.454	15.851	1,2%	13,8%
Eastern Mediterranean/Black Sea/Caspian Sea/Middel	1.024.898	878.466	-146.432	-14,3%	8,9%
North Africa	788.693	706.475	-82.218	-10,4%	7,1%
Europe (Atlantic)	460.813	485.322	24.508	5,3%	4,9%
Gulf of Mexico (Mexico and USA)	484.389	469.353	-15.037	-3,1%	4,7%
Persian Gulf/Arabian Sea	378.667	413.186	34.518	9,1%	4,2%
Southeast Asia	374.555	362.064	-12.491	-3,3%	3,7%
Pakistan/India/Sri Lanka/Bangladesh	376.635	340.750	-35.885	-9,5%	3,4%
North America (Atlantic)	328.245	339.655	11.410	3,5%	3,4%
Red Sea	262.588	324.083	61.495	23,4%	3,3%
South America (Atlantic)	574.956	298.988	-275.968	-48,0%	3,0%
West Africa	295.351	244.461	-50.891	-17,2%	2,5%
Central America and Caribbean	171.418	192.585	21.168	12,3%	1,9%
Unknown area (Tare of empty containers)	125.638	104.066	-21.572	-17,2%	1,1%
South America (Pacific)	73.492	88.465	14.974	20,4%	0,9%
South-Eastern Africa/Indian Ocean	103.674	67.242	-36.431	-35,1%	0,7%
Australia, New Zealand/Pacific Islands	29.700	53.572	23.872	80,4%	0,5%
Canada (Atlantic) and Great Lakes	167.489	43.839	-123.650	-73,8%	0,4%
North America (Pacific)	35.462	39.566	4.103	11,6%	0,4%

Main areas of destination (t)



Main areas of origin (t)

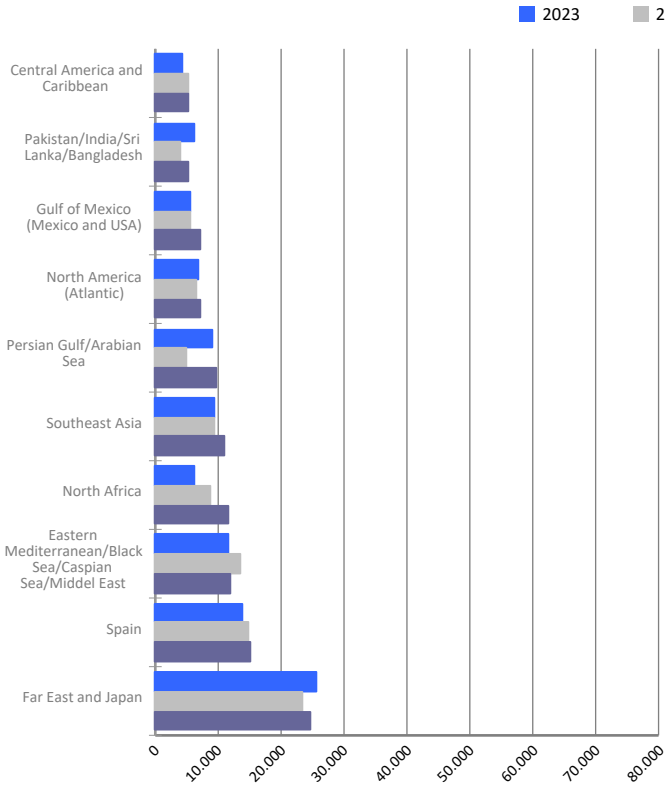


# MARITIME TRAFFIC BY ORIGIN/DESTINATION

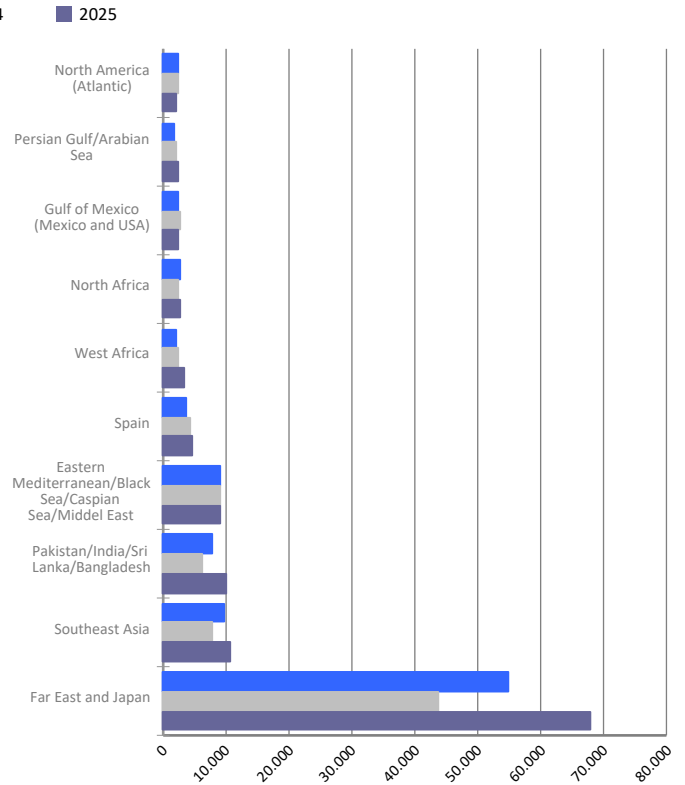
## Geographical areas. Full TEU non transit

Geographical areas	Monthly accumulated				% of total accum. 2025
	2024	2025	Diff. 25-24	%	
<b>Full TEU non transit</b>	<b>210.945</b>	<b>253.801</b>	<b>42.856</b>	<b>20,3%</b>	<b>100%</b>
Far East and Japan	67.123	92.472	25.349	37,8%	36,4%
Southeast Asia	17.289	21.566	4.277	24,7%	8,5%
Eastern Mediterranean/Black Sea/Caspian Sea/Middel	22.654	20.950	-1.704	-7,5%	8,3%
Spain	19.370	20.027	658	3,4%	7,9%
Pakistan/India/Sri Lanka/Bangladesh	9.947	15.114	5.168	52,0%	6,0%
North Africa	11.006	14.265	3.260	29,6%	5,6%
Persian Gulf/Arabian Sea	6.929	12.031	5.102	73,6%	4,7%
Gulf of Mexico (Mexico and USA)	8.217	9.504	1.287	15,7%	3,7%
North America (Atlantic)	9.106	9.357	251	2,8%	3,7%
West Africa	5.647	6.706	1.060	18,8%	2,6%
South America (Atlantic)	5.556	6.029	473	8,5%	2,4%
Central America and Caribbean	6.203	5.953	-250	-4,0%	2,3%
South America (Pacific)	4.565	5.487	922	20,2%	2,2%
Red Sea	4.644	4.941	297	6,4%	1,9%
South-Eastern Africa/Indian Ocean	3.506	3.343	-163	-4,6%	1,3%
Canada (Atlantic) and Great Lakes	2.336	2.071	-265	-11,3%	0,8%
Australia, New Zealand/Pacific Islands	1.696	1.675	-21	-1,2%	0,7%
North America (Pacific)	1.340	1.163	-177	-13,2%	0,5%
Europe (Atlantic)	1.364	989	-375	-27,5%	0,4%
Italy/France (Mediterranean)	2.449	158	-2.291	-93,5%	0,1%

Main areas of destination  
Full TEU non transit



Main areas of origin  
Full TEU non transit

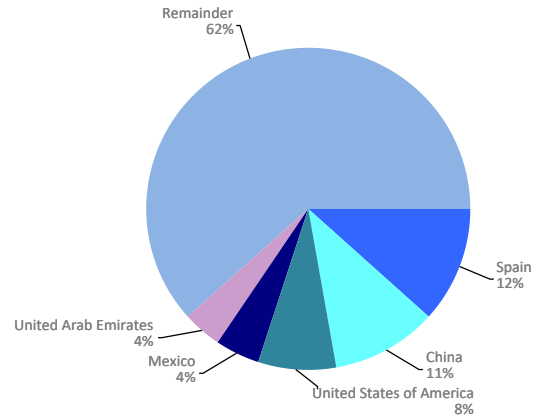


# MARITIME TRAFFIC BY ORIGIN/DESTINATION

## Ranking countries. Full TEU non transit

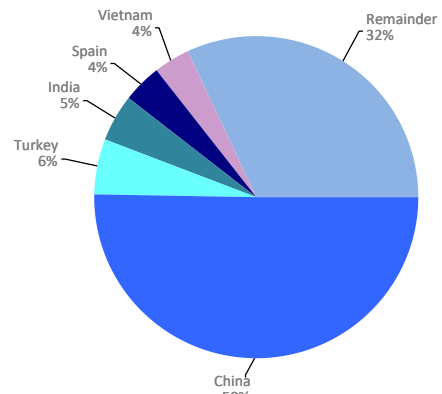
Loaded	Full TEU	% 25-24	% a/packaging
Spain	15.279	2,4%	11,6%
China	14.026	6,2%	10,7%
United States of America	10.205	15,0%	7,8%
Mexico	5.720	22,1%	4,4%
United Arab Emirates	4.995	54,0%	3,8%
Saudi Arabia	4.901	60,2%	3,7%
Turkey	4.721	-22,6%	3,6%
Morocco	4.476	-2,5%	3,4%
India	4.020	41,7%	3,1%
Korea (South)	3.946	55,4%	3,0%
Algeria	3.517	6663,5%	2,7%
Japan	3.399	-20,6%	2,6%
Israel	2.983	3,6%	2,3%
Singapore	2.946	213,4%	2,2%
Malaysia	2.280	-6,4%	1,7%
Remainder	43.746	-4,2%	33,4%
<b>TOTAL</b>	<b>131.160</b>	<b>9,0%</b>	<b>100%</b>

Main countries. Loaded



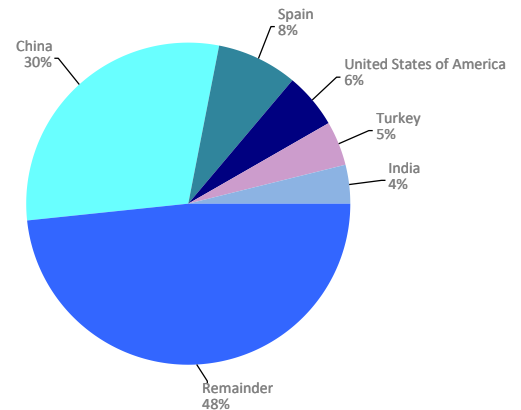
Unloaded	Full TEU	% 25-24	% a/packaging
China	61.714	57,7%	50,3%
Turkey	6.828	6,9%	5,6%
India	5.599	58,0%	4,6%
Spain	4.748	6,9%	3,9%
Vietnam	4.464	23,1%	3,6%
United States of America	3.974	-18,8%	3,2%
Korea (South)	3.787	41,8%	3,1%
Bangladesh	2.895	136,5%	2,4%
Egypt	2.160	23,9%	1,8%
Cambodia	2.057	104,5%	1,7%
Cote d'Ivoire	1.945	37,2%	1,6%
Saudi Arabia	1.868	-7,3%	1,5%
Brazil	1.713	36,0%	1,4%
Thailand	1.479	31,7%	1,2%
Indonesia	1.367	50,5%	1,1%
Remainder	16.045	5,3%	13,1%
<b>TOTAL</b>	<b>122.641</b>	<b>35,3%</b>	<b>100%</b>

Main countries. Unloaded



Total	Full TEU	% 25-24	% a/packaging
China	75.740	44,7%	29,8%
Spain	20.027	3,4%	7,9%
United States of America	14.179	3,0%	5,6%
Turkey	11.549	-7,5%	4,6%
India	9.619	50,8%	3,8%
Korea (South)	7.733	48,5%	3,0%
Saudi Arabia	6.769	33,4%	2,7%
Mexico	6.587	20,9%	2,6%
Vietnam	6.470	4,8%	2,5%
United Arab Emirates	5.544	45,9%	2,2%
Morocco	4.692	-7,0%	1,8%
Japan	4.582	-10,3%	1,8%
Egypt	4.370	-0,2%	1,7%
Brazil	3.844	6,8%	1,5%
Israel	3.793	6,8%	1,5%
Remainder	68.304	15,4%	26,9%
<b>TOTAL</b>	<b>253.801</b>	<b>20,3%</b>	<b>100%</b>

Main countries. Total



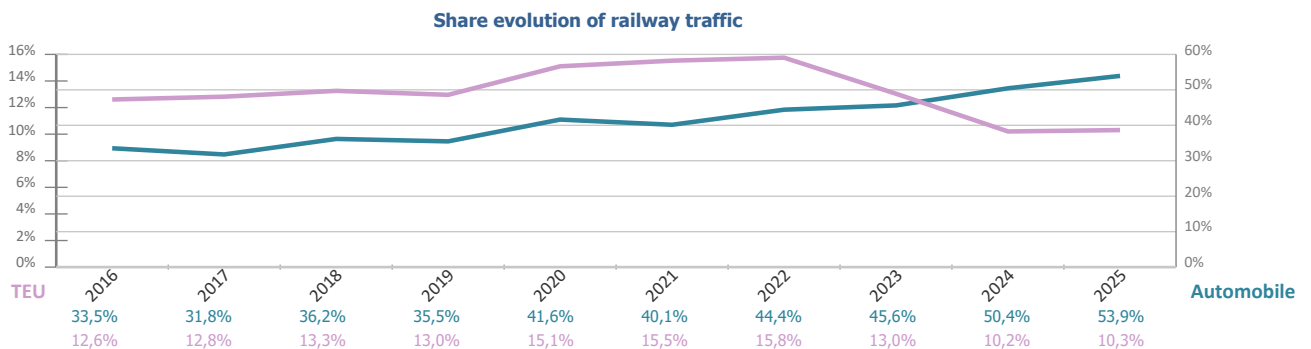
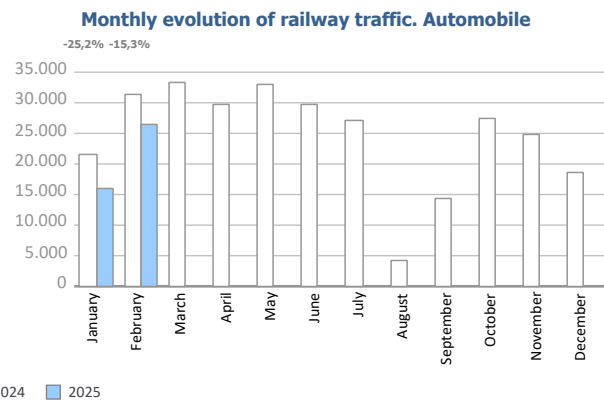
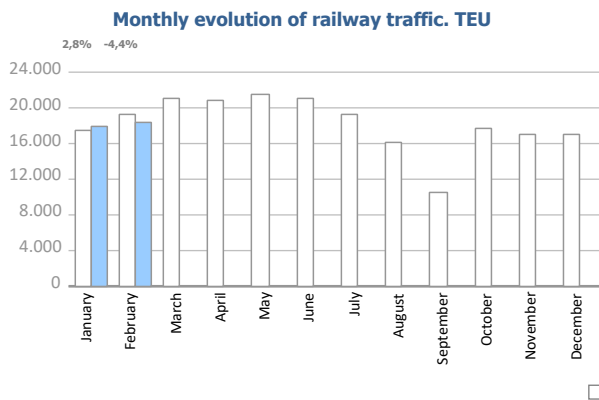
# RAILWAY TRAFFIC

## Monthly evolution of railway traffic. TEU

Monthly evolution of railway traffic	TEU 2024			TEU 2025			%		% of total port traffic 2025
	Loaded	Unloaded	Total	Loaded	Unloaded	Total	Monthly	Accumulated	
January	7.901	9.633	<b>17.534</b>	8.306	9.716	<b>18.022</b>	2,8%	2,8%	10,6%
February	8.751	10.545	<b>19.296</b>	8.793	9.650	<b>18.443</b>	-4,4%	-1,0%	10,0%
March	9.664	11.438	<b>21.102</b>						
April	10.070	10.684	<b>20.754</b>						
May	10.133	11.320	<b>21.453</b>						
June	10.637	10.334	<b>20.971</b>						
July	9.288	9.992	<b>19.280</b>						
August	7.503	8.699	<b>16.202</b>						
September	5.460	4.964	<b>10.424</b>						
October	8.560	9.245	<b>17.805</b>						
November	8.118	8.979	<b>17.097</b>						
December	8.208	8.913	<b>17.121</b>						
<b>Total</b>	<b>104.293</b>	<b>114.746</b>	<b>219.039</b>	<b>17.099</b>	<b>19.366</b>	<b>36.465</b>			<b>10,3%</b>

## Monthly evolution of railway traffic. Automobile

Monthly evolution of railway traffic	Automobile 2024			Automobile 2025			%		% of total port traffic 2025
	Loaded	Unloaded	Total	Loaded	Unloaded	Total	Monthly	Accumulated	
January	2.696	18.708	<b>21.404</b>	2.968	13.032	<b>16.000</b>	-25,2%	-25,2%	50,7%
February	4.150	27.099	<b>31.249</b>	4.381	22.094	<b>26.475</b>	-15,3%	-19,3%	56,1%
March	4.458	28.926	<b>33.384</b>						
April	3.573	26.030	<b>29.603</b>						
May	4.399	28.658	<b>33.057</b>						
June	4.552	25.180	<b>29.732</b>						
July	5.752	21.286	<b>27.038</b>						
August	799	3.375	<b>4.174</b>						
September	1.963	12.459	<b>14.422</b>						
October	3.699	23.902	<b>27.601</b>						
November	4.076	20.732	<b>24.808</b>						
December	2.778	15.809	<b>18.587</b>						
<b>Total</b>	<b>42.895</b>	<b>252.164</b>	<b>295.059</b>	<b>7.349</b>	<b>35.126</b>	<b>42.475</b>			<b>53,9%</b>

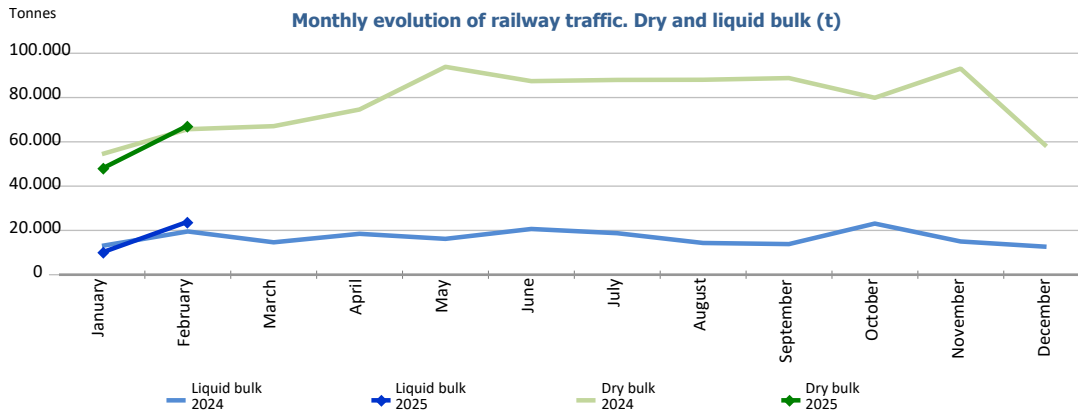




# RAILWAY TRAFFIC

## Monthly evolution of railway traffic. Dry and liquid bulk. Tonnes

Monthly evolution of railway traffic	Tonnes 2024			Tonnes 2025			%	
	Dry bulk	Liquid bulk	Total	Dry bulk	Liquid bulk	Total	Monthly	Accumulated
January	54.457	13.024	<b>67.481</b>	47.878	10.031	<b>57.909</b>	-14,2%	-14,2%
February	65.710	19.534	<b>85.244</b>	67.327	23.920	<b>91.247</b>	7,0%	-2,3%
March	67.073	14.630	<b>81.703</b>					
April	74.604	18.473	<b>93.077</b>					
May	93.873	16.191	<b>110.064</b>					
June	87.416	20.649	<b>108.065</b>					
July	87.962	18.748	<b>106.710</b>					
August	88.033	14.326	<b>102.359</b>					
September	88.794	13.828	<b>102.622</b>					
October	79.898	23.100	<b>102.998</b>					
November	93.076	15.008	<b>108.084</b>					
December	57.967	12.619	<b>70.586</b>					
<b>Total</b>	<b>938.863</b>	<b>200.130</b>	<b>1.138.993</b>	<b>115.205</b>	<b>33.951</b>	<b>149.156</b>		



## Railway traffic.

Railway gauge traffic (u)	Monthly accumulated		%	% of accumulated total 2025
	2024	2025		
Iberian gauge	1.126	1.071	-4,9%	61,9%
UIC	136	154	13,2%	8,9%
FGC	544	504	-7,4%	29,1%
<b>Total</b>	<b>1.806</b>	<b>1.729</b>	<b>-4,3%</b>	<b>100%</b>

