

Port of Barcelona traffic statistics

Accumulated data January 2025

Statistics Service

Index

Traffic indicators

Total traffic	3
Main indicators	4
Breakdown of total traffic	5
Breakdown of traffic in transit	6
Monthly evolution of traffic	7

Container traffic

TEU evolution	8
Container traffic (TEU)	9

Passenger traffic

Passenger traffic	10
Passenger classification	11

Automobile traffic

Automobile traffic	12
--------------------	----

Short Sea Shipping traffic (SSS)

SSS Goods classification	13
SSS General cargo and Motorways of the sea (MoS)	14
SSS Ranking countries	15

Vessel traffic

Vessel traffic	16
----------------	----

Goods traffic

Mode of packaging and navigation	17
Goods by classification 4.3.7.	18
Goods ranking	19
Containerized goods by classification 4.3.7.	20

Maritime traffic by origin/destination

Geographical areas. Tonnes	21
Geographical areas. Full TEU non transit	22
Ranquing countries. Full TEU non transit	23

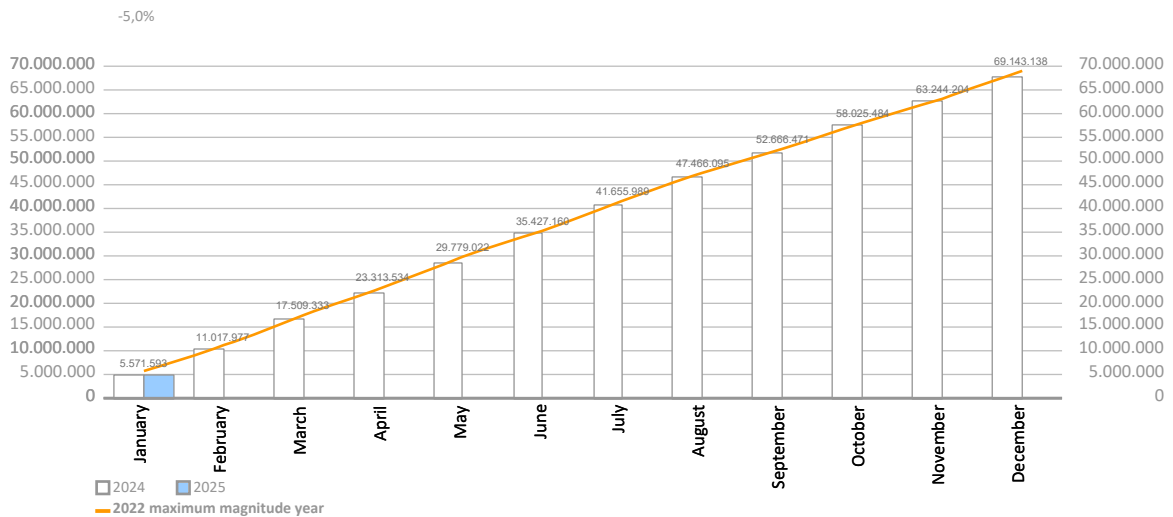
Railway traffic

Evolution of railway traffic (TEU and automobile)	24
Evolution of railway traffic (Solid and liquid bulk)	25
Railway gauge traffic	25

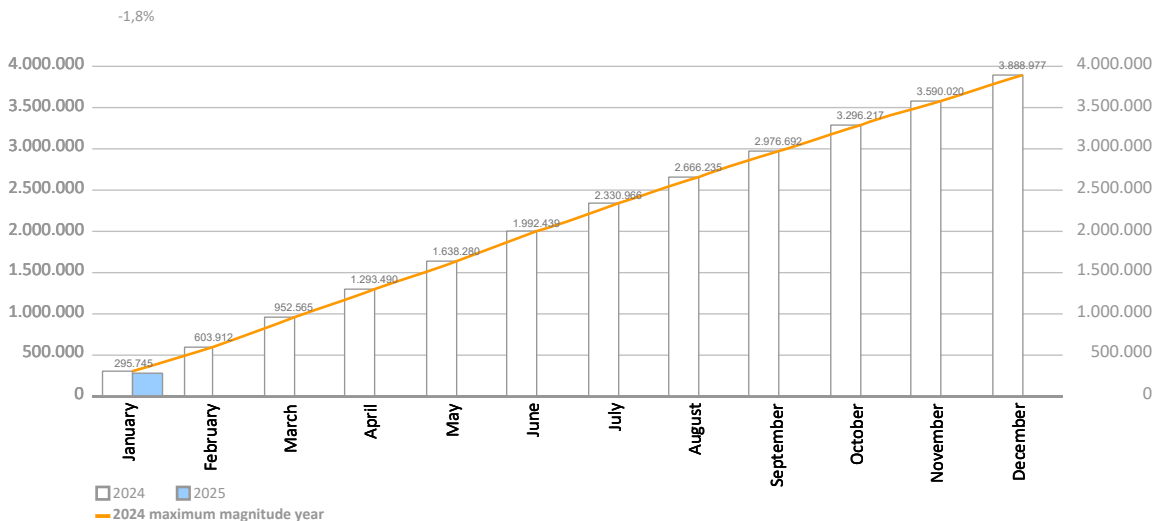
TRAFFIC INDICATORS

Total traffic	Monthly accumulated				% 24-23 accum. December	% 24-23 accum. November	Total traffic 2024
	2024	2025	Diff. 25-24	%			
O/D	2.901.031	3.114.737	213.706	7,4%	2,3%	1,9%	42.788.361
Transit	2.034.906	1.572.758	-462.147	-22,7%	21,7%	25,0%	25.058.736
Total throughput (tonnes)	4.935.937	4.687.495	-248.442	-5,0%	8,7%	9,4%	67.847.097
Supplies	112.977	144.292	31.316	27,7%	18,1%	15,0%	1.892.848
Fishing	150	146	-4	-2,5%	66,9%	67,4%	2.577
TOTAL TRAFFIC (tonnes)	5.049.064	4.831.934	-217.130	-4,3%	8,9%	9,6%	69.742.523
TEU	295.745	290.366	-5.379	-1,8%	18,6%	19,6%	3.888.977
UTI	30.308	29.841	-467	-1,5%	2,8%	3,1%	427.849
Automobiles (units)	49.721	42.823	-6.898	-13,9%	-13,7%	-12,8%	682.082
Vessels (units)	642	552	-90	-14,0%	-4,4%	-4,2%	8.383
Railway traffic (units)	843	803	-40	-4,7%	5,3%	5,4%	10.994
Cruise passengers (units)	111.036	113.082	2.046	1,8%	2,4%	2,6%	3.655.685
Ferry passengers (units)	68.931	68.441	-490	-0,7%	0,2%	0,7%	1.739.468
Automobile passengers (units)	22.448	23.870	1.422	6,3%	3,0%	3,2%	530.925

Monthly evolution of the accumulated traffic of goods. Tonnes



Monthly evolution of the accumulated traffic of goods. TEU



TRAFFIC INDICATORS

Main indicators	Monthly accumulated				Last 12 months	Total traffic 2024	% 12 months-2024
	2024	2025	Diff. 25-24	%			
Goods indicators by navigation and operation (tonnes)							
Navigation (t)	4.935.937	4.687.495	-248.442	-5,0%	67.598.655	67.847.097	-0,4%
Domestic	621.529	575.101	-46.428	-7,5%	8.490.022	8.536.450	-0,5%
Foreign	4.314.408	4.112.394	-202.013	-4,7%	59.108.634	59.310.647	-0,3%
Operation (t)	4.935.937	4.687.495	-248.442	-5,0%	67.598.655	67.847.097	-0,4%
Loaded	1.367.495	1.393.356	25.861	1,9%	19.927.606	19.901.746	0,1%
Unloaded	1.533.536	1.721.381	187.845	12,2%	23.074.460	22.886.615	0,8%
Transit	2.034.906	1.572.758	-462.147	-22,7%	24.596.589	25.058.736	-1,8%
Goods indicators by main units							
Containers (TEU)	295.745	290.366	-5.379	-1,8%	3.883.598	3.888.977	-0,1%
TEU O/D	153.367	168.523	15.156	9,9%	2.163.904	2.148.748	0,7%
TEU transit	142.379	121.843	-20.536	-14,4%	1.719.694	1.740.230	-1,2%
Containerized tonnes	3.012.542	2.852.519	-160.023	-5,3%	37.542.305	37.702.328	-0,4%
Level of containerization	78,34%	77,93%			76,34%	76,38%	
Passengers (u)	179.967	181.523	1.556	0,9%	5.396.709	5.395.153	0,0%
Regular line	68.931	68.441	-490	-0,7%	1.738.978	1.739.468	-0,0%
Pleasure cruises	111.036	113.082	2.046	1,8%	3.657.731	3.655.685	0,1%
Automobiles (u)	49.721	42.823	-6.898	-13,9%	675.184	682.082	-1,0%
Loaded	25.132	22.044	-3.088	-12,3%	425.911	428.999	-0,7%
Unloaded	15.686	9.501	-6.185	-39,4%	149.775	155.960	-4,0%
Transit	8.903	11.278	2.375	26,7%	99.498	97.123	2,4%
Vessels (u)	642	552	-90	-14,0%	8.293	8.383	-1,1%
Number of calls	642	552	-90	-14,0%	8.293	8.383	-1,1%
Gross Tonnage (GT)	25.184.951	22.231.540	-2.953.411	-11,7%	361.285.918	364.239.329	-0,8%
Average tonnes by vessel	7.688	8.492	803	10,5%	8.151	8.093	0,7%
UTI	30.308	29.841	-467	-1,5%	427.382	427.849	-0,1%
Domestic	17.506	18.859	1.353	7,7%	269.039	267.686	0,5%
% Full	65,4%	63,4%			62,0%	62,1%	
Foreign	12.802	10.982	-1.820	-14,2%	158.343	160.163	-1,1%
% Full	90,4%	90,9%			89,6%	89,6%	

TRAFFIC INDICATORS

Breakdown of total traffic (tonnes)	Monthly accumulated				% 24-23 accum. December	% 24-23 accum. November	% of total accum. 2025
	2024	2025	Diff. 25-24	%			
Goods indicators by type of packaging (t)	4.935.937	4.687.495	-248.442	-5,0%	8,7%	9,4%	100%
Liquid bulk	766.072	715.846	-50.226	-6,6%	6,3%	8,9%	15,3%
Hydrocarbons	436.274	446.224	9.950	2,3%	-0,0%	1,4%	9,5%
Petrol	188.106	166.964	-21.142	-11,2%	40,9%	49,2%	3,6%
Natural gas	104.591	132.499	27.908	26,7%	-33,5%	-36,8%	2,8%
Diesel oils	83.804	77.612	-6.192	-7,4%	7,8%	12,3%	1,7%
Other petroleum products	10.280	33.308	23.028	224,0%	11,9%	10,9%	0,7%
Fuel oil	47.812	32.487	-15.325	-32,1%	-25,2%	-27,0%	0,7%
Remainder	1.680	3.353	1.673	99,6%	-11,0%	-7,8%	0,1%
Other liquid bulk	329.798	269.623	-60.176	-18,2%	23,3%	29,3%	5,8%
Chemical products	152.206	117.653	-34.553	-22,7%	107,9%	120,7%	2,5%
Oils and fats	69.490	76.358	6.868	9,9%	-4,0%	-0,9%	1,6%
Biofuel	108.102	66.312	-41.791	-38,7%	-29,8%	-28,1%	1,4%
Natural/artificial fertilizer	0	8.808	8.808	0,0%	17,9%	9,2%	0,2%
Other petroleum products	0	493	493	0,0%	0,0%	0,0%	0,0%
Remainder	0	0	0		17,1%	102,5%	0,0%
Dry bulk	324.205	311.491	-12.713	-3,9%	0,1%	-1,7%	6,6%
Special installation	296.447	294.230	-2.218	-0,7%	0,9%	-0,8%	6,3%
Soya bean	159.238	112.142	-47.096	-29,6%	10,3%	10,8%	2,4%
Cereals and flours	60.868	92.442	31.575	51,9%	-10,0%	-8,4%	2,0%
Cement and clinker	29.180	54.893	25.713	88,1%	-10,3%	-11,8%	1,2%
Potashes	39.116	25.342	-13.774	-35,2%	19,5%	10,9%	0,5%
Common salt	8.045	9.410	1.365	17,0%	-5,2%	-9,6%	0,2%
Remainder	0	0	0		31,3%	21,8%	0,0%
Without special installation	27.757	17.262	-10.496	-37,8%	-11,2%	-13,9%	0,4%
Scrap iron	16.663	5.612	-11.051	-66,3%	-15,1%	-21,8%	0,1%
Other minerals and metallic waste	3.500	4.700	1.200	34,3%	28,8%	28,8%	0,1%
Other non-metallic minerals	3.500	3.500	0	0,0%	-26,9%	-9,2%	0,1%
Chemical products	4.095	3.450	-645	-15,7%	-0,9%	-14,8%	0,1%
Remainder	0	0	0		35,3%	23,3%	0,0%
General cargo	3.845.661	3.660.157	-185.503	-4,8%	10,3%	10,8%	78,1%
Containerized	3.012.542	2.852.519	-160.023	-5,3%	12,5%	13,1%	60,9%
Tare of containers	601.626	585.883	-15.743	-2,6%	17,3%	18,5%	12,5%
Chemical products	386.384	522.790	136.406	35,3%	27,6%	27,7%	11,2%
Other cargo by type	318.758	336.526	17.767	5,6%	18,8%	19,9%	7,2%
Other food products	358.167	228.152	-130.015	-36,3%	-22,0%	-21,7%	4,9%
Machinery and spare parts	175.069	183.253	8.184	4,7%	21,1%	22,9%	3,9%
Remainder	1.172.537	995.915	-176.622	-15,1%	11,2%	11,5%	21,2%
Non-containerized	833.119	807.638	-25.481	-3,1%	3,8%	3,9%	17,2%
Tare of platform and wagons (Ro-Ro)	302.439	297.551	-4.888	-1,6%	3,2%	3,1%	6,3%
Other cargo by type	142.190	143.540	1.350	0,9%	7,9%	8,1%	3,1%
Machinery and spare parts	92.641	89.956	-2.685	-2,9%	1,5%	2,9%	1,9%
Automobiles and parts	81.702	73.930	-7.772	-9,5%	-16,4%	-15,9%	1,6%
Other food products	34.713	40.013	5.301	15,3%	2,0%	1,8%	0,9%
Remainder	179.434	162.647	-16.787	-9,4%	15,2%	15,0%	3,5%

TRAFFIC INDICATORS

Breakdown of traffic in transit (tonnes)	Monthly accumulated				% 24-23 accum. December	% 24-23 accum. November	% of total accum. 2025
	2024	2025	Diff. 25-24	%			
Goods indicators by type of packaging (t)	2.034.906	1.572.758	-462.147	-22,7%	21,7%	25,0%	100%
Liquid bulk	283.668	201.581	-82.087	-28,9%	39,9%	45,8%	12,8%
Hydrocarbons	136.707	88.235	-48.472	-35,5%	36,3%	38,6%	5,6%
Petrol	97.321	46.888	-50.433	-51,8%	97,4%	104,5%	3,0%
Fuel oil	30.194	32.487	2.293	7,6%	-15,1%	-18,1%	2,1%
Diesel oils	9.192	8.860	-332	-3,6%	1,4%	-1,6%	0,6%
Remainder	0	0	0		-66,1%	-66,1%	0,0%
Other liquid bulk	146.961	113.346	-33.615	-22,9%	46,5%	59,5%	7,2%
Chemical products	57.764	67.605	9.841	17,0%	178,0%	203,1%	4,3%
Biofuel	89.197	45.741	-43.456	-48,7%	-29,1%	-24,7%	2,9%
Remainder	0	0	0		55,0%	94,5%	0,0%
Dry bulk	0	0	0				0,0%
Special installation	0	0	0				0,0%
Remainder	0	0	0				0,0%
Without special installation	0	0	0				0,0%
Remainder	0	0	0				0,0%
General cargo	1.751.238	1.371.177	-380.060	-21,7%	17,2%	19,8%	87,2%
Containerized	1.704.905	1.322.070	-382.835	-22,5%	17,5%	19,9%	84,1%
Tare of containers	291.993	244.661	-47.332	-16,2%	29,4%	32,9%	15,6%
Chemical products	147.762	241.226	93.464	63,3%	44,5%	44,9%	15,3%
Other cargo by type	180.623	163.453	-17.170	-9,5%	28,4%	32,8%	10,4%
Other food products	256.815	132.980	-123.835	-48,2%	-30,7%	-29,7%	8,5%
Other construction materials	96.860	89.023	-7.837	-8,1%	64,2%	63,8%	5,7%
Remainder	730.851	450.727	-280.124	-38,3%	14,2%	17,3%	28,7%
Non-containerized	46.332	49.107	2.774	6,0%	8,1%	16,5%	3,1%
Automobiles and parts	15.298	19.242	3.944	25,8%	-12,0%	-7,9%	1,2%
Tare of platform and wagons (Ro-Ro)	7.242	7.338	96	1,3%	34,5%	48,9%	0,5%
Other cargo by type	5.722	4.943	-778	-13,6%	7,1%	15,2%	0,3%
Machinery and spare parts	3.819	4.484	665	17,4%	-19,9%	-15,7%	0,3%
Chemical products	558	4.200	3.642	652,7%	104,5%	125,7%	0,3%
Remainder	13.693	8.899	-4.794	-35,0%	60,8%	86,4%	0,6%

TRAFFIC INDICATORS

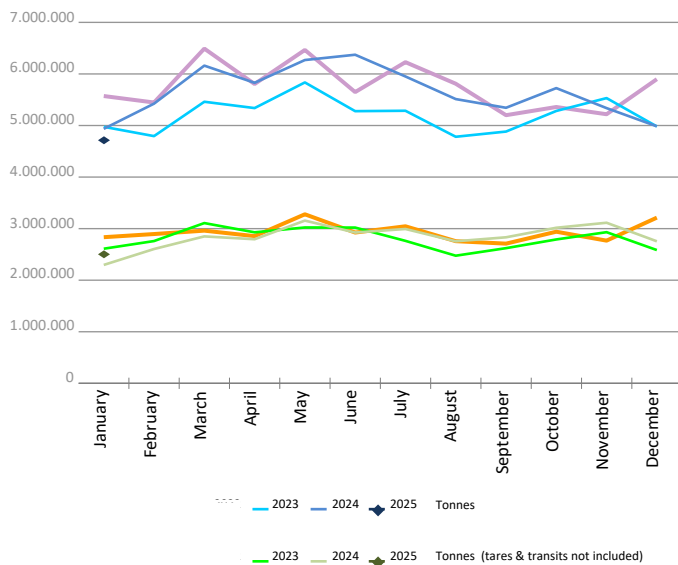
Monthly evolution of traffic. Tonnes

Monthly evolution of traffic	Total tonnes			%		Tonnes (tares & transits not included)			%	
	2024	2025	Diff. 25-24	Monthly	Accumulated	2024	2025	Diff. 25-24	Monthly	Accumulated
January	4.935.937	4.687.495	-248.442	-5,0%	-5,0%	2.296.202	2.483.302	187.100	8,1%	8,1%
February	5.423.841					2.604.422				
March	6.161.232					2.849.601				
April	5.828.423					2.794.270				
May	6.269.807					3.155.550				
June	6.372.645					2.924.703				
July	5.951.123					2.992.873				
August	5.512.658					2.754.246				
September	5.344.183					2.831.859				
October	5.725.556					3.016.818				
November	5.337.119					3.114.345				
December	4.984.574					2.754.117				
Total	67.847.097	4.687.495				34.089.005	2.483.302			

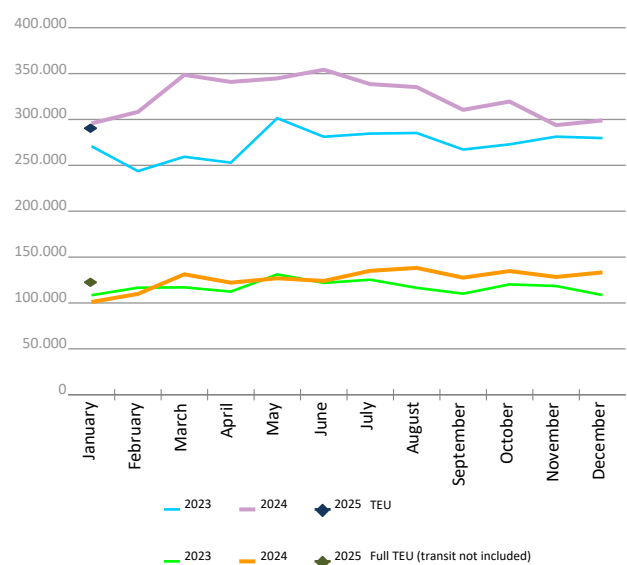
Monthly evolution of traffic. TEU

Monthly evolution of traffic	Total TEU			%		Full TEU (transit not included)			%	
	2024	2025	Diff. 25-24	Monthly	Accumulated	2024	2025	Diff. 25-24	Monthly	Accumulated
January	295.745	290.366	-5.379	-1,8%	-1,8%	101.061	121.094	20.033	19,8%	19,8%
February	308.167					109.884				
March	348.654					131.259				
April	340.925					122.134				
May	344.790					126.935				
June	354.159					124.010				
July	338.527					135.053				
August	335.270					138.214				
September	310.457					127.612				
October	319.525					134.801				
November	293.804					128.368				
December	298.957					133.348				
Total	3.888.977	290.366				1.512.675	121.094			

Goods (total tonnes)



Containers (total TEU)



CONTAINER TRAFFIC

TEU evolution

Full-unloaded foreign	Full TEU			%		Full-loaded foreign	Full TEU			%	
	2024	2025	Diff. 25-24	Monthly	Accumulated		2024	2025	Diff. 25-24	Monthly	Accumulated
January	41.691	58.529	16.839	40,4%	40,4%	January	49.933	53.340	3.407	6,8%	6,8%
February	44.498					February	55.500				
March	58.372					March	61.863				
April	57.413					April	55.227				
May	56.609					May	60.495				
June	59.082					June	54.888				
July	63.600					July	61.627				
August	66.928					August	61.469				
September	65.349					September	52.270				
October	61.771					October	62.387				
November	58.502					November	58.928				
December	58.522					December	66.408				
Total	692.335	58.529				Total	700.993	53.340			

Full-unloaded domestic	Full TEU			%		Full-loaded domestic	Full TEU			%	
	2024	2025	Diff. 25-24	Monthly	Accumulated		2024	2025	Diff. 25-24	Monthly	Accumulated
January	2.174	2.226	52	2,4%	2,4%	January	7.264	7.000	-265	-3,6%	-3,6%
February	2.269					February	7.617				
March	2.280					March	8.744				
April	2.011					April	7.483				
May	2.226					May	7.606				
June	1.919					June	8.122				
July	1.988					July	7.839				
August	1.935					August	7.882				
September	1.981					September	8.012				
October	2.370					October	8.273				
November	2.091					November	8.848				
December	2.097					December	6.322				
Total	25.339	2.226				Total	94.009	7.000			

Full - Transit	Full TEU			%		Empty	Empty TEU			%	
	2024	2025	Diff. 25-24	Monthly	Accumulated		2024	2025	Diff. 25-24	Monthly	Accumulated
January	112.121	100.722	-11.399	-10,2%	-10,2%	January	82.564	68.551	-14.013	-17,0%	-17,0%
February	117.906					February	80.377				
March	133.678					March	83.718				
April	134.375					April	84.416				
May	116.212					May	101.644				
June	140.218					June	89.932				
July	121.809					July	81.665				
August	107.930					August	89.126				
September	96.381					September	86.465				
October	97.680					October	87.044				
November	83.170					November	82.267				
December	94.604					December	71.006				
Total	1.356.082	100.722				Total	1.020.221	68.551			

CONTAINER TRAFFIC

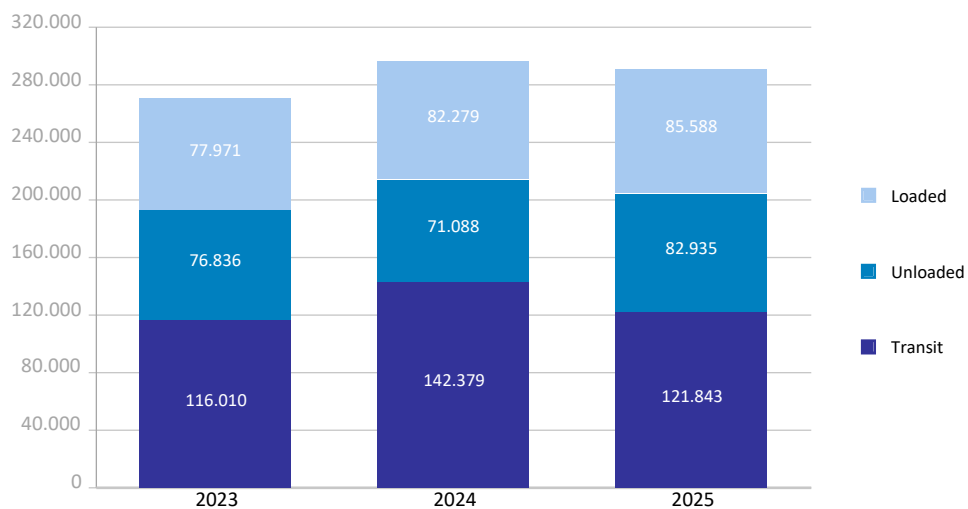
TEU

Container traffic	Monthly accumulated 2024			Monthly accumulated 2025			%
	Domestic	Foreign	Total	Domestic	Foreign	Total	
Total traffic	17.070	278.676	295.745	16.314	274.053	290.366	-1,8%
Unloaded	9.384	136.533	145.917	8.680	144.001	152.681	4,6%
Roll On-Roll Off	1.795	1.425	3.220	1.643	312	1.955	-39,3%
Lift On-Lift Off	7.590	135.108	142.697	7.038	143.689	150.726	5,6%
Loaded	7.686	142.143	149.829	7.634	130.052	137.686	-8,1%
Roll On-Roll Off	1.911	1.498	3.409	1.822	461	2.283	-33,0%
Lift On-Lift Off	5.775	140.645	146.420	5.812	129.591	135.403	-7,5%

Breakdown by navigation and operation	Monthly accumulated 2024			Monthly accumulated 2025			%
	Domestic	Foreign	Total	Domestic	Foreign	Total	
Loaded	7.686	74.594	82.279	7.634	77.955	85.588	4,0%
Full	7.264	49.933	57.197	7.000	53.340	60.339	5,5%
Empty	422	24.661	25.083	634	24.615	25.249	0,7%
Unloaded	9.170	61.918	71.088	8.661	74.275	82.935	16,7%
Full	2.174	41.691	43.865	2.226	58.529	60.755	38,5%
Empty	6.996	20.227	27.223	6.435	15.746	22.181	-18,5%
Transit	214	142.165	142.379	20	121.824	121.843	-14,4%
Full	2	112.119	112.121	1	100.721	100.722	-10,2%
Empty	212	30.046	30.258	19	21.103	21.122	-30,2%

Total traffic	17.070	278.676	295.745	16.314	274.053	290.366	-1,8%
Full	9.440	203.742	213.182	9.226	212.590	221.815	4,0%
Empty	7.630	74.934	82.564	7.088	61.463	68.551	-17,0%
% Empty	44,7%	26,9%	27,9%	43,4%	22,4%	23,6%	
% Transit	1,3%	51,0%	48,1%	0,1%	44,5%	42,0%	

General cargo distribution by operation (TEU)

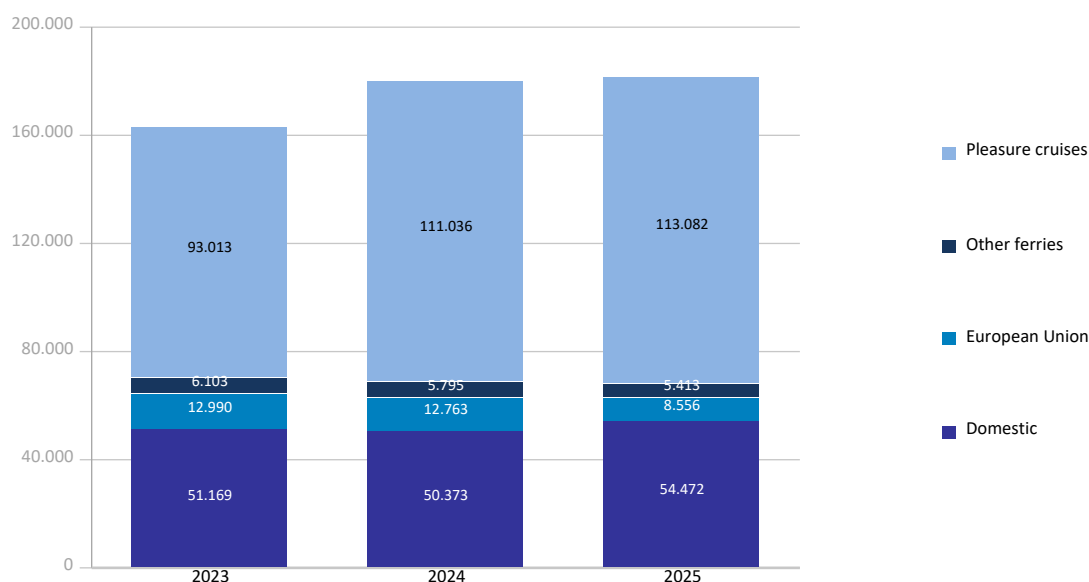


PASSENGER TRAFFIC

Total passenger traffic (units)	Monthly accumulated				% 24-23 accum. December	% 24-23 accum. November
	2024	2025	Diff. 25-24	%		
Total passengers	179.967	181.523	1.556	0,9%	1,7%	2,0%
Embarkation	59.448	66.240	6.792	11,4%	3,9%	4,0%
Disembarkation	56.831	62.700	5.869	10,3%	4,1%	4,3%
Transit	63.688	52.583	-11.105	-17,4%	-3,3%	-2,8%
Regular line ferries	68.931	68.441	-490	-0,7%	0,2%	0,7%
Embarkation	37.292	37.270	-22	-0,1%	0,5%	0,9%
Disembarkation	31.639	31.171	-468	-1,5%	-0,0%	0,4%
Domestic	50.373	54.472	4.099	8,1%	4,7%	5,1%
Embarkation	29.318	31.126	1.808	6,2%	5,1%	5,4%
Disembarkation	21.055	23.346	2.291	10,9%	4,3%	4,7%
European Union	12.763	8.556	-4.207	-33,0%	-7,0%	-6,1%
Embarkation	6.124	3.846	-2.278	-37,2%	-7,5%	-6,4%
Disembarkation	6.639	4.710	-1.929	-29,1%	-6,6%	-5,8%
Other ferries	5.795	5.413	-382	-6,6%	-17,2%	-17,5%
Embarkation	1.850	2.298	448	24,2%	-16,8%	-17,8%
Disembarkation	3.945	3.115	-830	-21,0%	-17,7%	-17,2%
Pleasure cruises	111.036	113.082	2.046	1,8%	2,4%	2,6%
Embarkation	22.156	28.970	6.814	30,8%	7,1%	6,8%
Disembarkation	25.192	31.529	6.337	25,2%	7,8%	7,8%
Transit	63.688	52.583	-11.105	-17,4%	-3,3%	-2,8%

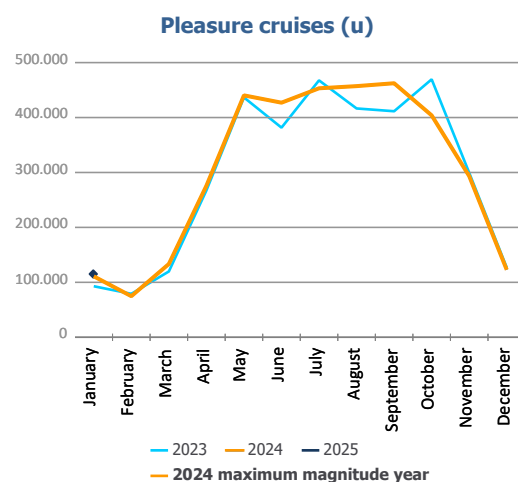
Total passenger calls (units)	Monthly accumulated				% 24-23 accum. December	% 24-23 accum. November
	2024	2025	Diff. 25-24	%		
Total number of calls	269	258	-11	-4,1%	-5,5%	-5,5%
Regular Line ferries	244	234	-10	-4,1%	-6,4%	-6,4%
Pleasure cruises	25	24	-1	-4,0%	-1,6%	-1,8%

Passenger traffic distribution (u)

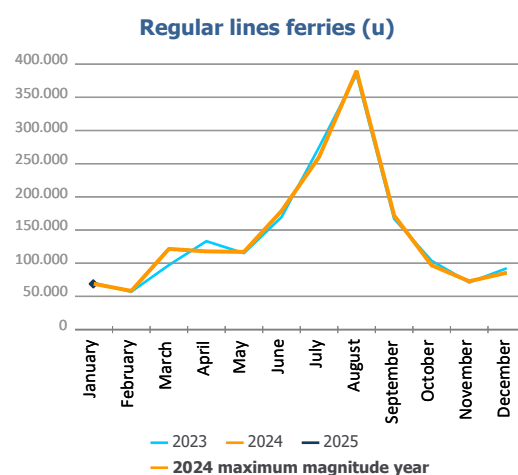


PASSENGER CLASSIFICATION

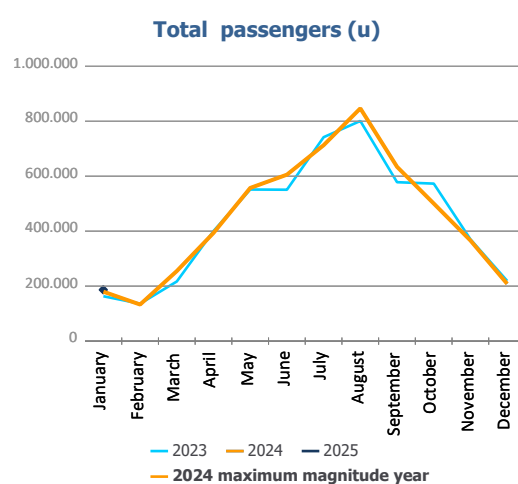
Monthly evolution of passenger traffic	Pleasure cruises			%	
	2024	2025	Diff. 25-24	Monthly	Accumulated
January	111.036	113.082	2.046	1,8%	1,8%
February	74.939				
March	133.501				
April	275.893				
May	440.310				
June	427.017				
July	453.184				
August	457.134				
September	462.381				
October	403.903				
November	293.427				
December	122.960				
Total	3.655.685	113.082			



Monthly evolution of passenger traffic	Regular lines ferries			%	
	2024	2025	Diff. 25-24	Monthly	Accumulated
January	68.931	68.441	-490	-0,7%	-0,7%
February	58.232				
March	121.528				
April	117.845				
May	117.084				
June	178.722				
July	259.895				
August	389.879				
September	172.031				
October	96.842				
November	72.847				
December	85.632				
Total	1.739.468	68.441			



Monthly evolution of passenger traffic	Total passengers			%	
	2024	2025	Diff. 25-24	Monthly	Accumulated
January	179.967	181.523	1.556	0,9%	0,9%
February	133.171				
March	255.029				
April	393.738				
May	557.394				
June	605.739				
July	713.079				
August	847.013				
September	634.412				
October	500.745				
November	366.274				
December	208.592				
Total	5.395.153	181.523			

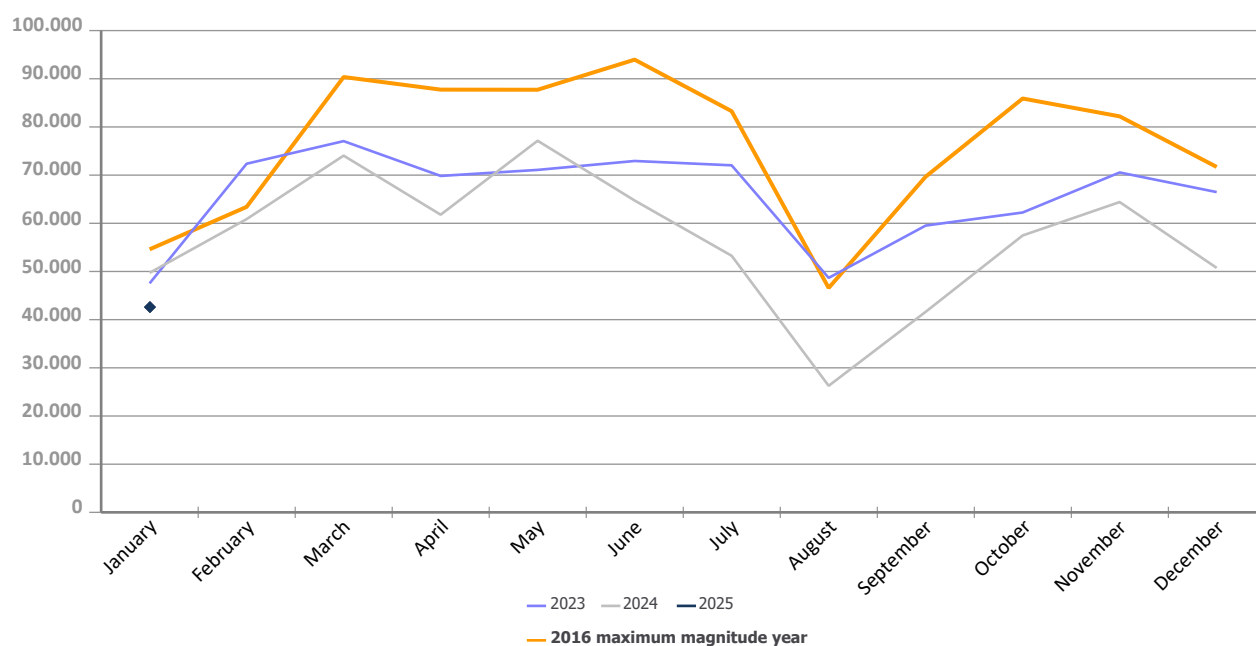


AUTOMOBILE TRAFFIC

Total automobile traffic (units)	Monthly accumulated				% 24-23 accum. December	% 24-23 accum. November
	2024	2025	Diff. 25-24	%		
Automobile traffic by navigation and operation	49.721	42.823	-6.898	-13,9%	-13,7%	-12,8%
Domestic	5.236	5.615	379	7,2%	5,0%	3,2%
Loaded	4.454	4.945	491	11,0%	-1,7%	-2,0%
Unloaded	782	670	-112	-14,3%	35,1%	27,5%
Transit	0	0	0		-31,1%	-31,1%
Foreign	44.485	37.208	-7.277	-16,4%	-16,6%	-15,4%
Loaded	20.678	17.099	-3.579	-17,3%	5,5%	5,1%
Unloaded	14.904	8.831	-6.073	-40,7%	-45,1%	-43,0%
Transit	8.903	11.278	2.375	26,7%	-20,6%	-16,8%

Monthly automobile traffic (u)	Monthly		Accumulated		%	
	2024	2025	2024	2025	Monthly	Accumulated
January	49.721	42.823	49.721	42.823	-13,9%	-13,9%
February	60.872		110.593			
March	74.044		184.637			
April	61.791		246.428			
May	77.134		323.562			
June	64.728		388.290			
July	53.260		441.550			
August	26.273		467.823			
September	41.628		509.451			
October	57.476		566.927			
November	64.412		631.339			
December	50.743		682.082			

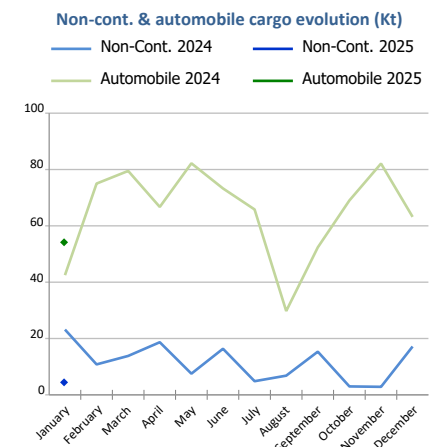
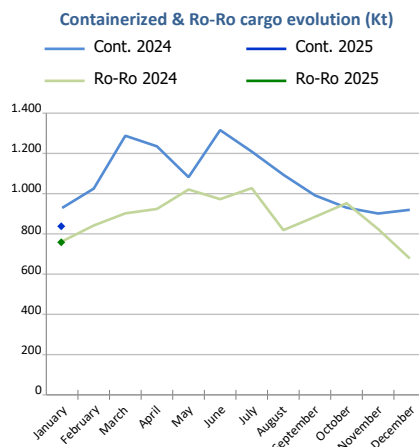
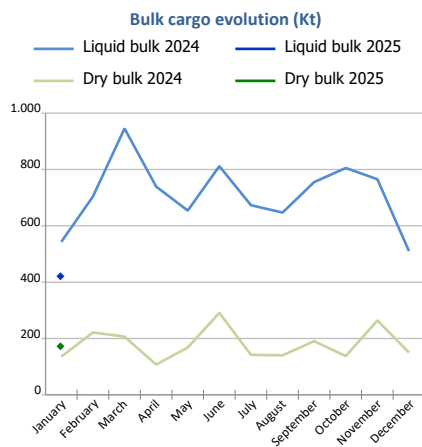
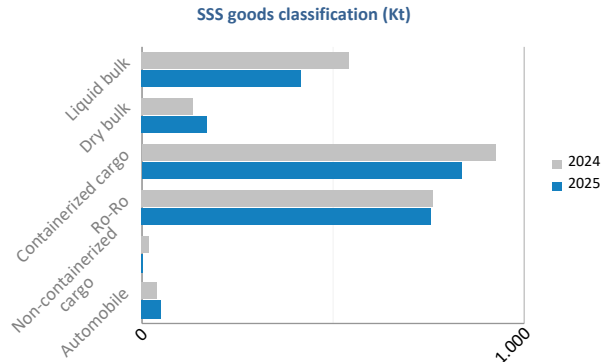
Evolution of monthly automobile traffic (u)



SHORT SEA SHIPPING (SSS)

SSS Goods classification

Goods classification. Tonnes	Monthly accumulated		%	% of total port traffic
	2024	2025		
Liquid bulk	543.182	419.266	-22,8%	58,6%
Dry bulk	135.786	172.348	26,9%	55,3%
Containerized cargo	929.041	836.648	-9,9%	29,7%
Ro-Ro	762.829	756.788	-0,8%	100,0%
Non-containerized cargo	23.168	4.168	-82,0%	24,4%
Automobile	42.497	54.174	27,5%	80,1%
Total	2.436.502	2.243.392	-7,9%	47,9%



SSS General Cargo	Spanish Islands			SSS Remainder			TOTAL		
	2024	2025	%	2024	2025	%	2024	2025	%
Containerized cargo	76.334	76.030	-0,4%	852.707	760.619	-10,8%	929.041	836.648	-9,9%
O/D	72.532	72.770	0,3%	303.648	237.359	-21,8%	376.180	310.129	-17,6%
Transit	3.802	3.259	-14,3%	549.059	523.260	-4,7%	552.861	526.520	-4,8%
Ro-Ro	394.724	441.882	11,9%	368.105	314.905	-14,5%	762.829	756.788	-0,8%
O/D	394.724	441.882	11,9%	336.552	281.089	-16,5%	731.276	722.971	-1,1%
Transit	0	0	0,0%	31.553	33.817	7,2%	31.553	33.817	7,2%
Non-cont. cargo	76	238	211,0%	23.091	3.930	-83,0%	23.168	4.168	-82,0%
O/D	76	238	211,0%	22.518	3.088	-86,3%	22.595	3.326	-85,3%
Transit	0	0	0,0%	573	843	47,0%	573	843	47,0%
Automobile	8.363	9.546	14,1%	34.134	44.628	30,7%	42.497	54.174	27,5%
O/D	8.363	9.546	14,1%	27.032	31.085	15,0%	35.395	40.631	14,8%
Transit	0	0	0,0%	7.102	13.543	90,7%	7.102	13.543	90,7%



Short Sea Shipping (SSS):

The transport of cargo/goods and passengers between ports situated in the European Union or between these ports and non-European ports with a coastline in seas bordering Europe. This applies to cargo either originating from or is destined for these countries (in accordance with the European Shortsea Network).

Motorways of the sea (MoS):

Short Sea Shipping services as an alternative to road transport and which fulfill the following criteria: minimum frequency of 3 calls per week and calling at a maximum of 3 different ports.

General cargo:

Including containerized cargo, non-containerized cargo, Ro-Ro and automobiles.

Containerized cargo:

Excluding container cargo by Ro-Ro.

Non-containerized cargo:

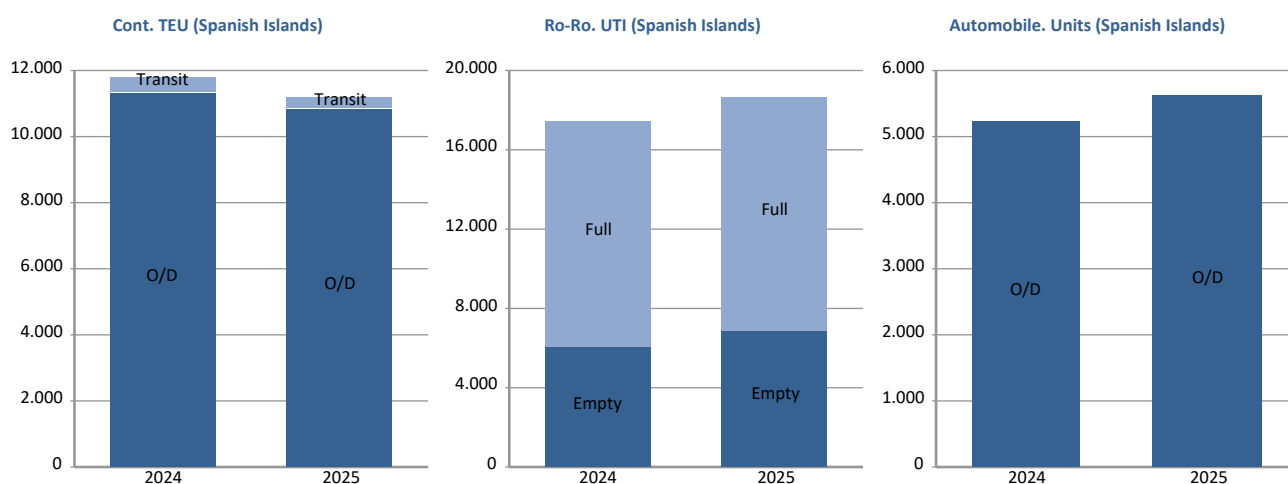
General non-containerized goods other than Ro-Ro and excluding automobiles.

Ro-Ro:

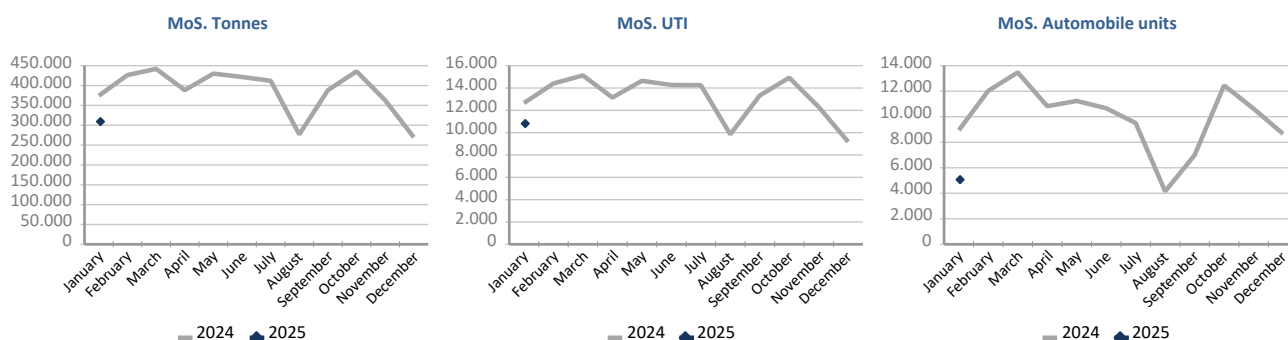
General cargo carried in UTI's. Excluding automobiles.

SHORT SEA SHIPPING (SSS)

SSS General cargo	Spanish Islands			SSS Remainder			TOTAL		
	2024	2025	%	2024	2025	%	2024	2025	%
Containerized cargo. TEU	11.822	11.171	-5,5%	84.174	71.943	-14,5%	95.996	83.114	-13,4%
O/D	11.326	10.807	-4,6%	39.632	26.900	-32,1%	50.958	37.707	-26,0%
Full	7.010	7.126	1,7%	21.073	16.203	-23,1%	28.082	23.328	-16,9%
Empty	4.317	3.682	-14,7%	18.559	10.698	-42,4%	22.876	14.379	-37,1%
Transit	496	364	-26,7%	44.543	45.043	1,1%	45.039	45.407	0,8%
Full	310	325	4,7%	41.403	41.073	-0,8%	41.713	41.397	-0,8%
Empty	186	39	-79,0%	3.140	3.971	26,4%	3.326	4.010	20,6%
Ro-Ro. UTI	17.473	18.621	6,6%	12.813	11.220	-12,4%	30.286	29.841	-1,5%
Full	11.457	11.773	2,8%	11.541	10.161	-12,0%	22.998	21.934	-4,6%
Empty	6.016	6.848	13,8%	1.272	1.059	-16,7%	7.288	7.907	8,5%
Automobile units	5.221	5.614	7,5%	23.497	29.331	24,8%	28.718	34.945	21,7%
O/D	5.221	5.614	7,5%	18.892	20.469	8,3%	24.113	26.083	8,2%
Transit				4.605	8.862	92,4%	4.605	8.862	92,4%



Motorways of the Sea (MoS)	2024	EU		Non-EU		TOTAL			
		2025	%	2024	2025	%	2024	2025	%
Tonnes	373.690	313.064	-16,2%	781	629	-19,4%	374.471	313.694	-16,2%
Loaded	207.713	168.161	-19,0%	649	629	-3,1%	208.362	168.791	-19,0%
Unloaded	165.976	144.903	-12,7%	132			166.108	144.903	-12,8%
UTI	12.646	10.924	-13,6%	11	14	27,3%	12.657	10.938	-13,6%
Loaded	6.645	5.683	-14,5%	7	14	100,0%	6.652	5.697	-14,4%
Unloaded	6.001	5.241	-12,7%	4			6.005	5.241	-12,7%
Automobile units	8.940	5.060	-43,4%	6	17	183,3%	8.946	5.077	-43,2%
Loaded	8.798	4.953	-43,7%	6	17	183,3%	8.804	4.970	-43,5%
Unloaded	142	107	-24,6%	0			142	107	-24,6%

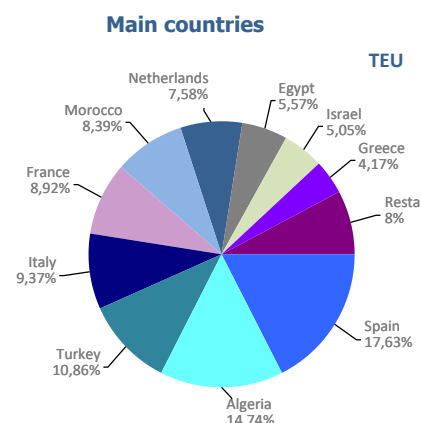


UTI: All those means of unitization, self-propelled or otherwise, that are directly or indirectly used as a means of land transport (e.g. trailers, platforms, trucks, freezer trucks, etc.) are considered as UTI. Containers are not considered to be included, except those that are handled by an equipment transport of the own terminal.

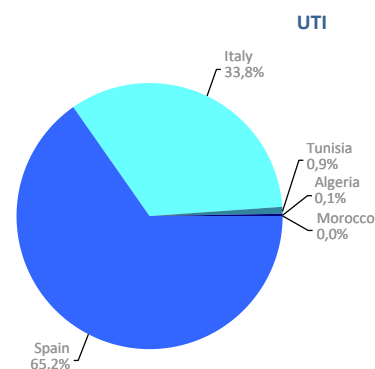
SHORT SEA SHIPPING (SSS)

SSS Ranking countries by mode of packaging

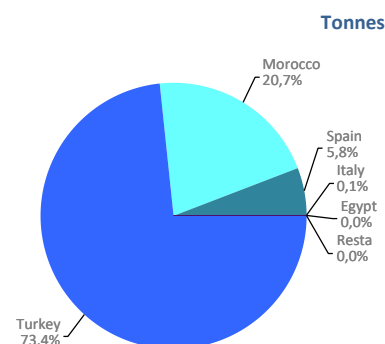
Containerized cargo. TEU	Monthly accumulated				% of total 2025
	2024	2025	Diff. 25-24	%	
Total	95.996	83.114	-12.883	-13,4%	100%
Spain	17.349	14.652	-2.697	-15,5%	17,6%
Algeria	19.480	12.250	-7.231	-37,1%	14,7%
Turkey	13.591	9.024	-4.567	-33,6%	10,9%
Italy	5.443	7.785	2.342	43,0%	9,4%
France	5.017	7.418	2.401	47,8%	8,9%
Morocco	11.020	6.976	-4.044	-36,7%	8,4%
Netherlands	6.277	6.303	27	0,4%	7,6%
Egypt	4.191	4.627	437	10,4%	5,6%
Israel	1.961	4.197	2.236	114,0%	5,0%
Greece	2.740	3.466	727	26,5%	4,2%
Remainder	8.930	6.418	-2.512	-28,1%	7,7%



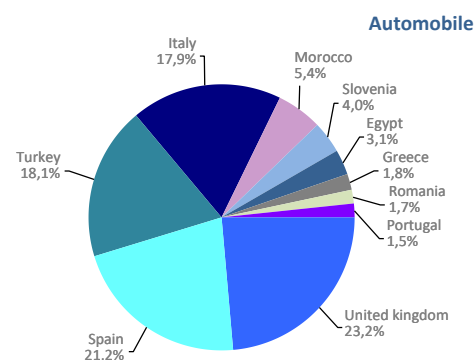
Ro-Ro. UTI	Monthly accumulated				% of total 2025
	2024	2025	Diff. 25-24	%	
Total	30.286	29.841	-445	-1,5%	100%
Spain	18.149	19.458	1.309	7,2%	65,2%
Italy	11.966	10.087	-1.879	-15,7%	33,8%
Tunisia	142	254	112	78,9%	0,9%
Algeria	0	28	28	0,0%	0,1%
Morocco	25	14	-11	-44,0%	0,0%
Remainder	4	0	-4		0,0%



Non-cont. cargo. Tonnes	Monthly accumulated				% of total 2025
	2024	2025	Diff. 25-24	%	
Total	23.168	4.168	-19.000	-82,0%	100%
Turkey	10.262	3.059	-7.203	-70,2%	73,4%
Morocco	426	863	437	102,6%	20,7%
Spain	79	241	162	205,3%	5,8%
Italy	520	3	-518	-99,5%	0,1%
Egypt	18	1	-17	-93,2%	0,0%
Remainder	11.863	1	-11.862	-100,0%	0,0%



Automobile. Units	Monthly accumulated				% of total 2025
	2024	2025	Diff. 25-24	%	
Total	28.718	34.945	6.227	21,7%	100%
United kingdom	4.870	8.107	3.237	66,5%	23,2%
Spain	5.688	7.418	1.730	30,4%	21,2%
Turkey	1.855	6.317	4.462	240,5%	18,1%
Italy	10.232	6.262	-3.970	-38,8%	17,9%
Morocco	1.755	1.890	135	7,7%	5,4%
Slovenia	470	1.395	925	196,8%	4,0%
Egypt	123	1.067	944	767,5%	3,1%
Greece	2.179	642	-1.537	-70,5%	1,8%
Romania	643	590	-53	-8,2%	1,7%
Portugal	133	531	398	299,2%	1,5%
Remainder	770	726	-44	-5,7%	2,1%

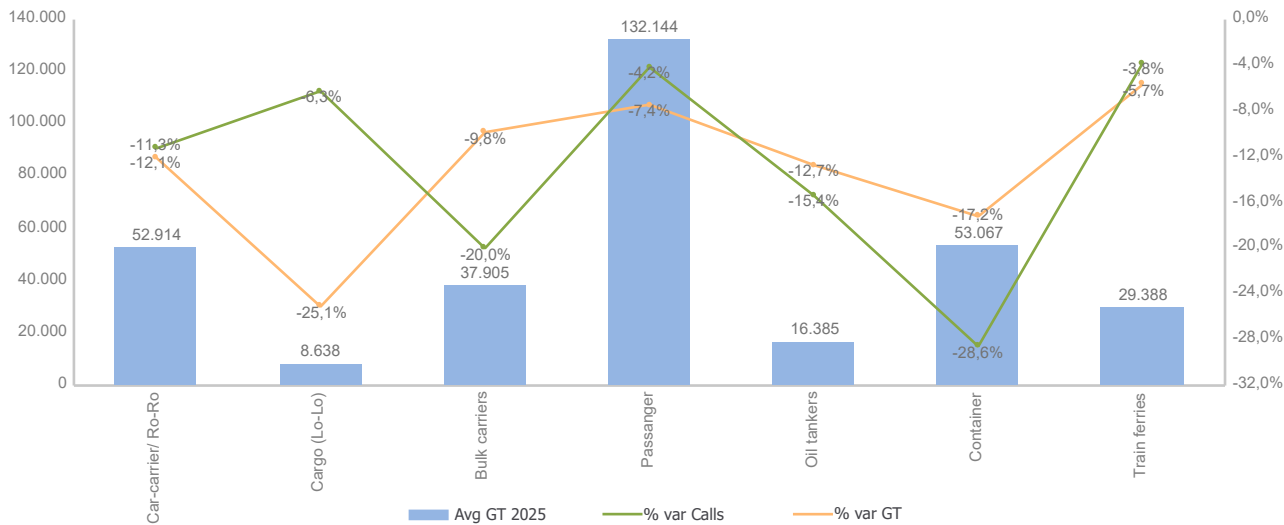


VESSELS TRAFFIC

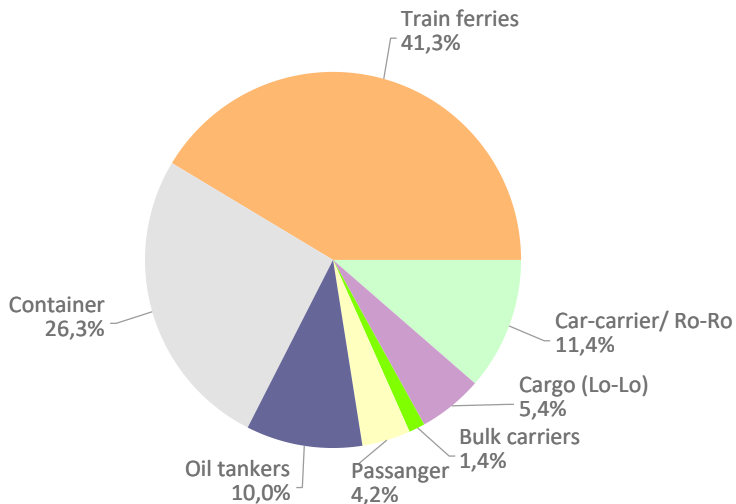
Vessels traffic	Monthly accumulated		
	2024	2025	%
Number of calls	642	552	-14,0%
Gross Tonnage (GT)	25.184.951	22.231.540	-11,7%
Average Gross Tonnage	39.229	40.275	2,7%

Type of vessels	Monthly accumulated						Avg GT	
	2024		2025		%		2024	2025
	Calls	GT	Calls	GT	Calls	GT		
Total	642	25.184.951	552	22.231.540	-14,0%	-11,7%	39.229	40.275
Car-carrier/ Ro-Ro	71	3.790.539	63	3.333.582	-11,3%	-12,1%	53.388	52.914
Cargo (Lo-Lo)	32	345.974	30	259.150	-6,3%	-25,1%	10.812	8.638
Bulk carriers	10	336.364	8	303.240	-20,0%	-9,8%	33.636	37.905
Passanger	24	3.283.496	23	3.039.322	-4,2%	-7,4%	136.812	132.144
Oil tankers	65	1.032.457	55	901.148	-15,4%	-12,7%	15.884	16.385
Container	203	9.293.245	145	7.694.681	-28,6%	-17,2%	45.780	53.067
Train ferries	237	7.102.876	228	6.700.417	-3,8%	-5,7%	29.970	29.388

Average GT by type of vessel and variation of calls and GT



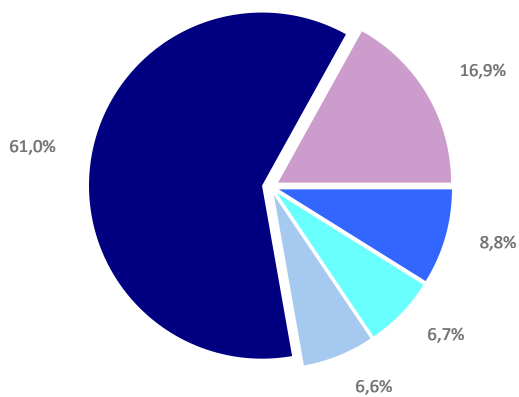
Distribution by type of vessel



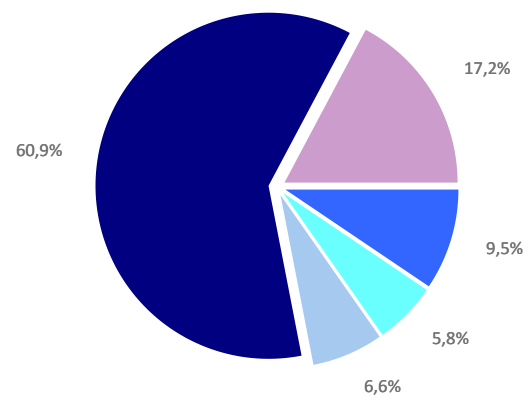
GOODS TRAFFIC

Type of packaging and navigation	Monthly accumulated 2024			Monthly accumulated 2025			%
	Domestic	Foreign	Total	Domestic	Foreign	Total	
Hydrocarbons	57.276	378.998	436.274	14.686	431.538	446.224	2,3%
Incoming	37.510	331.400	368.910	14.686	421.678	436.363	18,3%
Outgoing	19.766	47.598	67.364	0	9.860	9.860	-85,4%
Other liquid bulk	74.560	255.238	329.798	18.247	251.376	269.623	-18,2%
Incoming	54.310	157.772	212.082	10.880	218.185	229.065	8,0%
Outgoing	20.250	97.467	117.717	7.367	33.191	40.558	-65,5%
Dry bulk	5.945	318.259	324.205	4.216	307.275	311.491	-3,9%
Incoming	5.945	241.918	247.864	4.216	217.630	221.846	-10,5%
Outgoing	0	76.341	76.341	0	89.645	89.645	17,4%
Containerized cargo	107.113	2.905.429	3.012.542	104.232	2.748.287	2.852.519	-5,3%
Incoming	35.166	1.341.575	1.376.740	34.909	1.389.239	1.424.148	3,4%
Outgoing	71.947	1.563.855	1.635.801	69.323	1.359.048	1.428.371	-12,7%
Non-containerized cargo	376.635	456.483	833.119	433.720	373.919	807.638	-3,1%
Incoming	124.914	233.969	358.883	142.043	178.975	321.017	-10,6%
Outgoing	251.721	222.514	474.235	291.677	194.944	486.621	2,6%
Total general cargo	483.748	3.361.913	3.845.661	537.952	3.122.206	3.660.157	-4,8%
Incoming	160.080	1.575.544	1.735.624	176.952	1.568.213	1.745.165	0,5%
Outgoing	323.668	1.786.369	2.110.037	361.000	1.553.992	1.914.992	-9,2%
Total throughput (tonnes)	621.529	4.314.408	4.935.937	575.101	4.112.394	4.687.495	-5,0%
Incoming	257.845	2.306.634	2.564.478	206.734	2.425.706	2.632.440	2,7%
Outgoing	363.684	2.007.774	2.371.459	368.367	1.686.689	2.055.055	-13,3%
Container traffic (TEU)	17.070	278.676	295.745	16.314	274.053	290.366	-1,8%
Incoming	9.384	136.533	145.917	8.680	144.001	152.681	4,6%
Outgoing	7.686	142.143	149.829	7.634	130.052	137.686	-8,1%

Distribution by type of packaging 2024

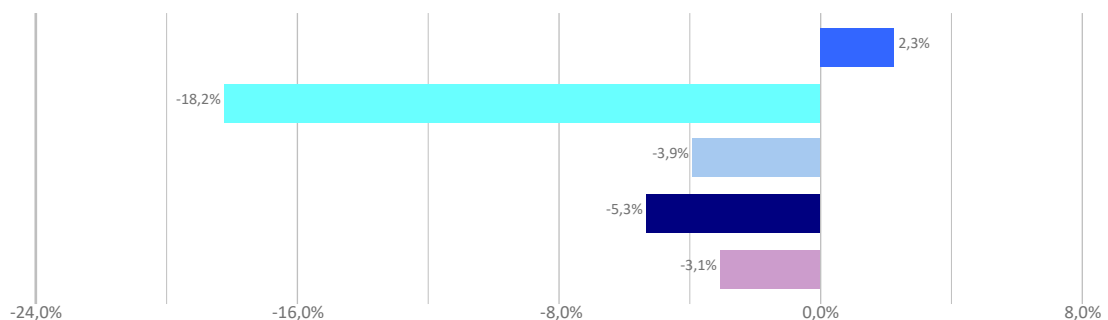


Distribution by type of packaging 2025



■ Hydrocarbons ■ Liquid bulk ■ Dry bulk ■ Containerized cargo ■ Non Containerized cargo

Annual growth by type of packaging



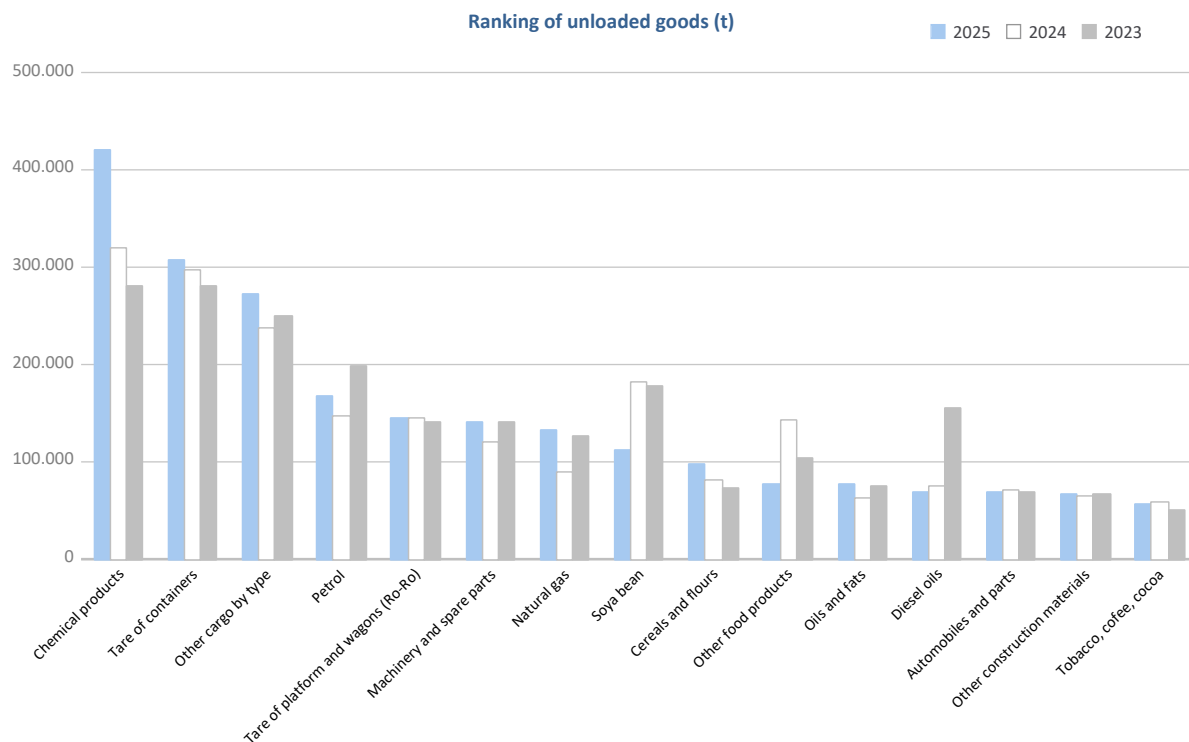
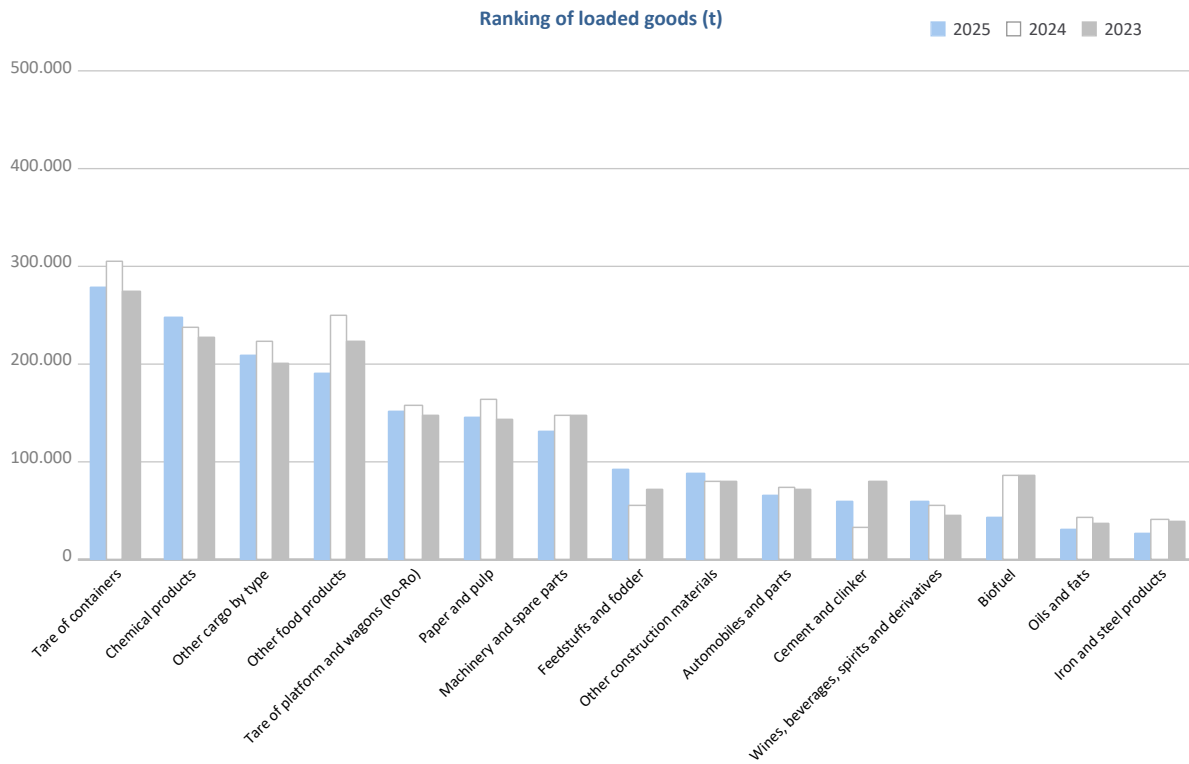
GOODS TRAFFIC

Goods by classification 4.3.7.	Monthly accumulated				% of total accum. 2025
	2024	2025	Diff. 25-24	%	
Tonnes	4.935.937	4.687.495	-248.442	-5,0%	100%
Energy	573.532	544.830	-28.702	-5,0%	11,6%
Crude oil	50	44	-6	-12,0%	0,0%
Fuel oil	50.278	37.009	-13.269	-26,4%	0,8%
Diesel oils	83.804	77.612	-6.192	-7,4%	1,7%
Petrol	188.107	166.990	-21.117	-11,2%	3,6%
Other petroleum products	13.790	38.178	24.388	176,9%	0,8%
Petroleum fuel gasses	4.210	6.537	2.327	55,3%	0,1%
Coal	7.556	2.720	-4.837	-64,0%	0,1%
Natural gas	104.591	132.499	27.908	26,7%	2,8%
Biofuel	121.147	83.241	-37.906	-31,3%	1,8%
Iron, steel and metallurgical products	282.489	187.545	-94.944	-33,6%	4,0%
Iron ore	1.386	1.858	472	34,0%	0,0%
Other minerals and metallic waste	62.139	48.123	-14.016	-22,6%	1,0%
Scrap iron	58.621	22.206	-36.415	-62,1%	0,5%
Iron and steel products	124.635	76.715	-47.920	-38,4%	1,6%
Other metallurgical products	35.707	38.643	2.936	8,2%	0,8%
Non-metallic minerals	46.888	46.844	-44	-0,1%	1,0%
Common salt	11.615	14.018	2.403	20,7%	0,3%
Other non-metallic minerals	35.273	32.826	-2.447	-6,9%	0,7%
Fertilizers	50.590	56.288	5.697	11,3%	1,2%
Phosphates	0	1.149	1.149	0,0%	0,0%
Potashes	39.456	25.641	-13.815	-35,0%	0,5%
Natural/artificial fertilizer	11.134	29.497	18.363	164,9%	0,6%
Chemicals	557.078	667.546	110.469	19,8%	14,2%
Chemical products	557.078	667.546	110.469	19,8%	14,2%
Construction materials	179.434	217.358	37.924	21,1%	4,6%
Asphalt	710	372	-338	-47,6%	0,0%
Cement and clinker	32.858	60.326	27.468	83,6%	1,3%
Other construction materials	145.865	156.660	10.794	7,4%	3,3%
Agriculture, livestock and food	1.178.883	965.076	-213.807	-18,1%	20,6%
Cereals and flours	103.675	103.942	267	0,3%	2,2%
Soya bean	219.091	112.752	-106.339	-48,5%	2,4%
Fruits, vegetables, pulses	55.767	40.307	-15.460	-27,7%	0,9%
Wines, beverages, spirits and derivatives	69.398	88.989	19.591	28,2%	1,9%
Canned goods	20.970	32.496	11.526	55,0%	0,7%
Tobacco, coffee, cocoa	91.908	80.853	-11.056	-12,0%	1,7%
Oils and fats	105.119	108.152	3.033	2,9%	2,3%
Other food products	392.880	268.165	-124.714	-31,7%	5,7%
Frozen fish	44.390	28.166	-16.224	-36,5%	0,6%
Feedstuffs and fodder	75.684	101.254	25.570	33,8%	2,2%
Other cargo	1.017.787	984.175	-33.612	-3,3%	21,0%
Timber	43.998	36.807	-7.191	-16,3%	0,8%
Paper and pulp	245.131	194.093	-51.038	-20,8%	4,1%
Machinery and spare parts	267.710	273.209	5.500	2,1%	5,8%
Other cargo by type	460.949	480.066	19.117	4,1%	10,2%
Vehicles and transport parts	1.049.256	1.017.833	-31.423	-3,0%	21,7%
Automobiles and parts	145.191	134.399	-10.793	-7,4%	2,9%
Tare of platform and wagons (Ro-Ro)	302.439	297.551	-4.888	-1,6%	6,3%
Tare of containers	601.626	585.883	-15.743	-2,6%	12,5%

GOODS TRAFFIC

Goods by classification 4.3.7.

Ranking of goods (tonnes)

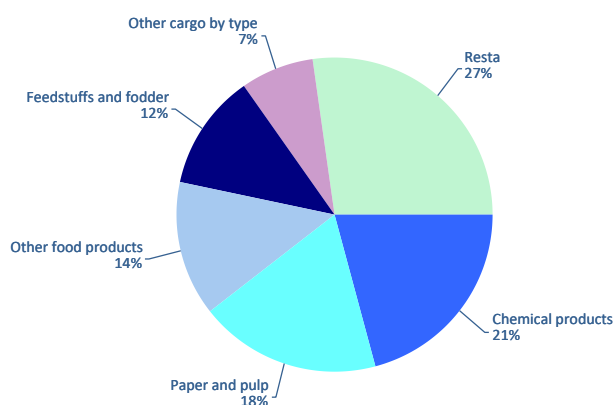


GOODS TRAFFIC

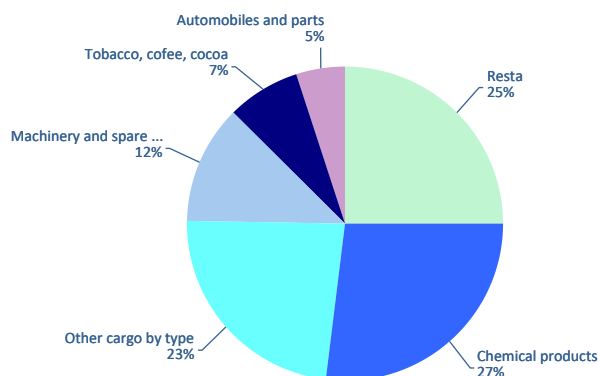
Containerized goods by classification 4.3.7. (Tares & transits not included)

Containerized goods classification	Loaded			Unloaded			Total monthly accumulated		
	2024	2025	%	2024	2025	%	2024	2025	%
Total tonnes (tares & transits not included)	596.049	651.631	9,3%	402.070	537.596	33,7%	998.118	1.189.227	19,1%
Chemical products	135.569	136.505	0,7%	103.143	145.059	40,6%	238.712	281.563	18,0%
Other cargo by type	47.790	48.380	1,2%	90.369	124.693	38,0%	138.159	173.073	25,3%
Paper and pulp	98.305	119.980	22,0%	15.763	13.334	-15,4%	114.069	133.314	16,9%
Machinery and spare parts	32.078	28.794	-10,2%	48.471	66.781	37,8%	80.548	95.575	18,7%
Other food products	97.254	90.443	-7,0%	4.098	4.729	15,4%	101.352	95.172	-6,1%
Feedstuffs and fodder	36.468	78.050	114,0%	6.245	1.878	-69,9%	42.713	79.928	87,1%
Other construction materials	19.961	25.898	29,7%	14.109	20.959	48,5%	34.070	46.856	37,5%
Tobacco, coffee, cocoa	6.451	6.511	0,9%	32.440	40.148	23,8%	38.891	46.659	20,0%
Automobiles and parts	10.228	9.006	-11,9%	17.823	26.688	49,7%	28.050	35.694	27,3%
Iron and steel products	10.851	9.794	-9,7%	16.541	22.379	35,3%	27.392	32.173	17,5%
Wines, beverages, spirits and derivatives	27.828	25.753	-7,5%	2.043	4.733	131,7%	29.871	30.486	2,1%
Other minerals and metallic waste	14.112	16.151	14,5%	1.649	6.180	274,7%	15.761	22.332	41,7%
Canned goods	4.614	6.165	33,6%	5.573	11.389	104,4%	10.187	17.553	72,3%
Other metallurgical products	5.307	4.823	-9,1%	9.225	11.201	21,4%	14.532	16.025	10,3%
Fruits, vegetables, pulses	2.645	4.006	51,5%	10.359	8.256	-20,3%	13.003	12.261	-5,7%
Oils and fats	13.597	9.650	-29,0%	3.666	2.341	-36,1%	17.263	11.991	-30,5%
Biofuel	8.033	8.928	11,1%	1.554	3.033	95,3%	9.586	11.962	24,8%
Other non-metallic minerals	9.187	6.251	-32,0%	6.292	5.389	-14,4%	15.479	11.641	-24,8%
Cereals and flours	2.528	2.734	8,1%	2.238	3.077	37,5%	4.766	5.810	21,9%
Scrap iron	1.490	1.296	-13,0%	2.095	4.205	100,7%	3.584	5.501	53,5%
Natural/artificial fertilizer	3.813	2.880	-24,5%	1.695	1.827	7,8%	5.508	4.707	-14,5%
Frozen fish	151	59	-60,7%	2.075	3.808	83,5%	2.225	3.867	73,8%
Timber	451	1.232	173,1%	1.255	2.279	81,6%	1.707	3.512	105,8%
Common salt	3.027	3.021	-0,2%	100	193	93,2%	3.127	3.214	2,8%
Other petroleum products	1.692	1.819	7,5%	880	924	5,1%	2.572	2.743	6,7%
Petroleum fuel gasses	292	1.338	357,8%	37	0		329	1.338	306,4%
Cement and clinker	1.082	1.247	15,3%	0	0		1.082	1.247	15,3%
Fuel oil	634	697	9,9%	202	384	90,1%	836	1.081	29,3%
Coal	47	7	-86,0%	1.152	928	-19,4%	1.199	934	-22,1%
Soya bean	0	41		642	555	-13,5%	642	596	-7,1%
Potashes	31	33	4,2%	286	172	-40,0%	317	204	-35,6%
Asphalt	533	139	-73,9%	0	0		533	139	-73,9%
Phosphates	0	0		0	49		0	49	
Petrol	0	0		0	26		0	26	21483,3%
Crude oil	0	0		50	0		50	0	
Iron ore	0	0		2	0		2	0	

Distribution of main goods Loaded 2025



Distribution of main goods Unloaded 2025

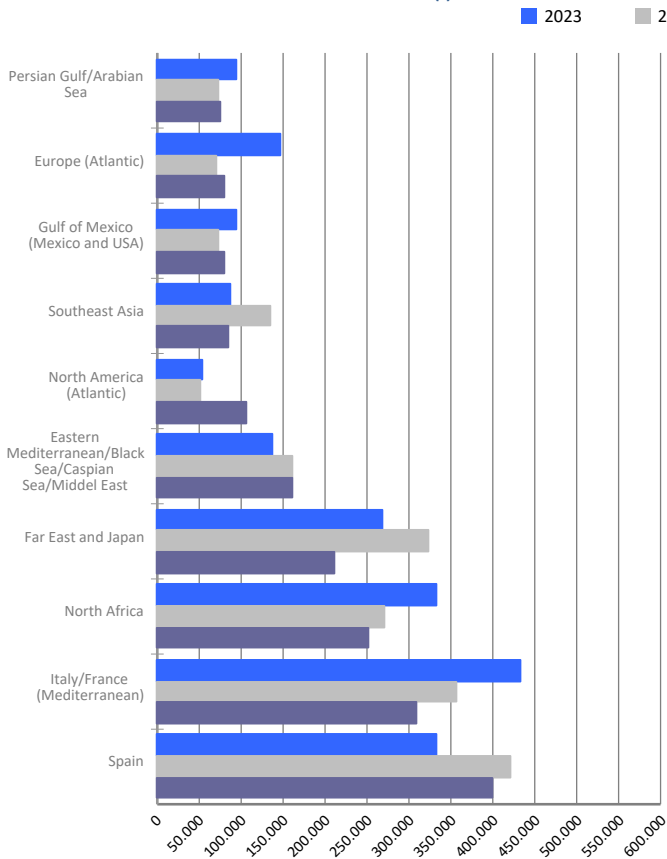


MARITIME TRAFFIC BY ORIGIN/DESTINATION

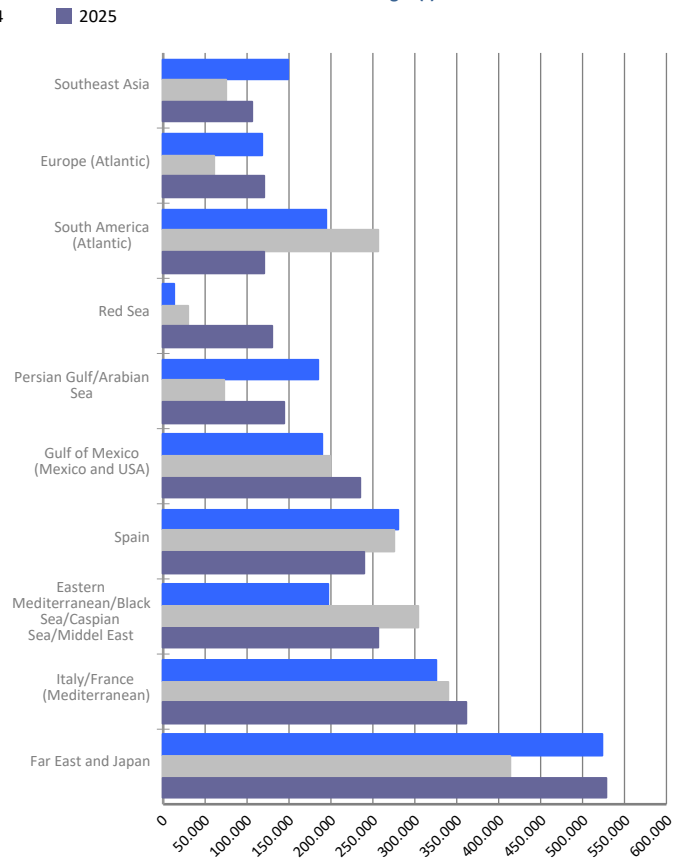
Geographical areas. Tonnes

Geographical areas	Monthly accumulated				% of total accum. 2025
	2024	2025	Diff. 25-24	%	
Tonnes	4.935.937	4.687.495	-248.442	-5,0%	100%
Far East and Japan	737.224	738.875	1.651	0,2%	15,8%
Italy/France (Mediterranean)	696.990	671.908	-25.082	-3,6%	14,3%
Spain	696.416	638.145	-58.271	-8,4%	13,6%
Eastern Mediterranean/Black Sea/Caspian Sea/Middel	465.570	417.594	-47.975	-10,3%	8,9%
North Africa	393.219	315.845	-77.374	-19,7%	6,7%
Gulf of Mexico (Mexico and USA)	272.722	315.265	42.543	15,6%	6,7%
Persian Gulf/Arabian Sea	145.306	220.522	75.216	51,8%	4,7%
Europe (Atlantic)	132.405	199.098	66.693	50,4%	4,2%
Southeast Asia	211.475	191.319	-20.157	-9,5%	4,1%
North America (Atlantic)	119.688	184.535	64.847	54,2%	3,9%
Red Sea	118.599	158.907	40.308	34,0%	3,4%
South America (Atlantic)	287.971	155.972	-131.999	-45,8%	3,3%
Pakistan/India/Sri Lanka/Bangladesh	156.609	127.427	-29.182	-18,6%	2,7%
Central America and Caribbean	105.814	83.768	-22.046	-20,8%	1,8%
West Africa	113.854	55.763	-58.091	-51,0%	1,2%
Unknown area (Tare of empty containers)	73.705	52.539	-21.167	-28,7%	1,1%
South America (Pacific)	39.004	44.209	5.205	13,3%	0,9%
Australia, New Zealand/Pacific Islands	12.732	37.187	24.455	192,1%	0,8%
South-Eastern Africa/Indian Ocean	34.818	34.764	-54	-0,2%	0,7%
Canada (Atlantic) and Great Lakes	105.018	29.361	-75.657	-72,0%	0,6%
North America (Pacific)	16.797	14.492	-2.305	-13,7%	0,3%

Main areas of destination (t)



Main areas of origin (t)

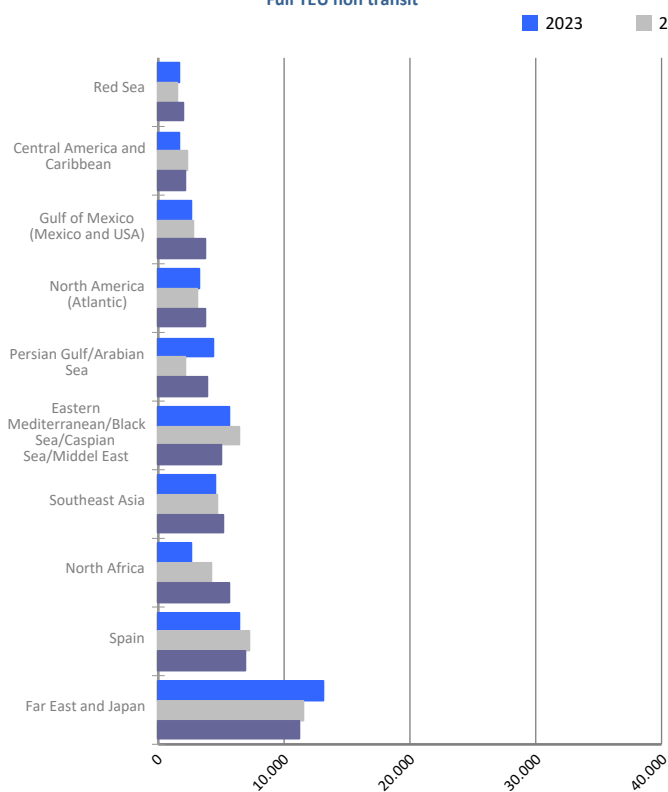


MARITIME TRAFFIC BY ORIGIN/DESTINATION

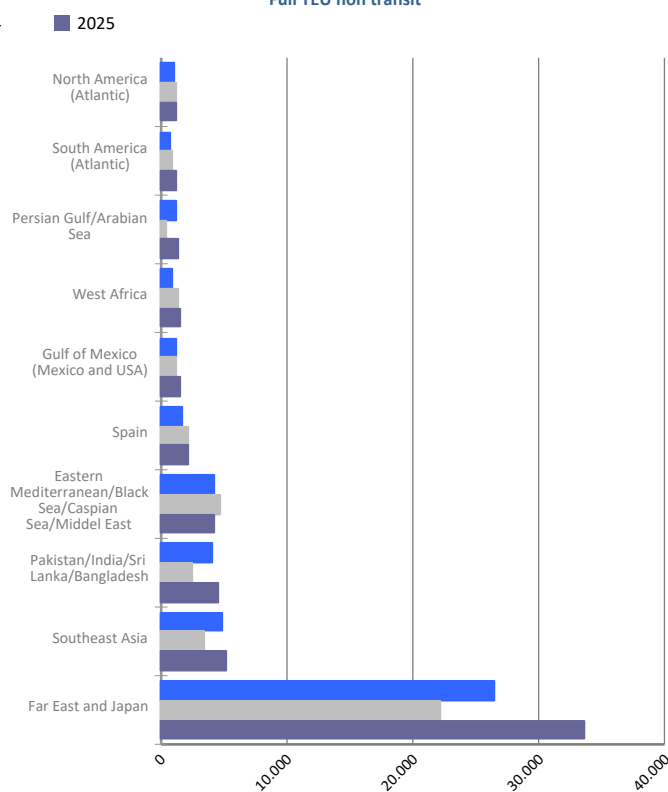
Geographical areas. Full TEU non transit

Geographical areas	Monthly accumulated				% of total accum. 2025
	2024	2025	Diff. 25-24	%	
Full TEU non transit	101.061	121.094	20.033	19,8%	100%
Far East and Japan	33.717	44.886	11.169	33,1%	37,1%
Southeast Asia	8.153	10.411	2.258	27,7%	8,6%
Spain	9.449	9.199	-250	-2,6%	7,6%
Eastern Mediterranean/Black Sea/Caspian Sea/Middel	11.116	9.151	-1.965	-17,7%	7,6%
North Africa	5.224	6.837	1.614	30,9%	5,6%
Pakistan/India/Sri Lanka/Bangladesh	3.788	6.392	2.604	68,8%	5,3%
Persian Gulf/Arabian Sea	2.567	5.284	2.717	105,8%	4,4%
Gulf of Mexico (Mexico and USA)	3.911	5.238	1.327	33,9%	4,3%
North America (Atlantic)	4.263	4.986	723	17,0%	4,1%
West Africa	2.867	3.151	285	9,9%	2,6%
South America (Atlantic)	2.665	3.093	428	16,1%	2,6%
Red Sea	1.949	2.675	726	37,2%	2,2%
South America (Pacific)	2.257	2.607	350	15,5%	2,2%
Central America and Caribbean	2.798	2.524	-274	-9,8%	2,1%
South-Eastern Africa/Indian Ocean	1.674	1.646	-28	-1,7%	1,4%
Canada (Atlantic) and Great Lakes	1.077	1.147	70	6,5%	0,9%
Australia, New Zealand/Pacific Islands	761	849	88	11,6%	0,7%
North America (Pacific)	654	571	-83	-12,7%	0,5%
Europe (Atlantic)	1.036	377	-659	-63,6%	0,3%
Italy/France (Mediterranean)	1.138	72	-1.066	-93,7%	0,1%

Main areas of destination
Full TEU non transit



Main areas of origin
Full TEU non transit

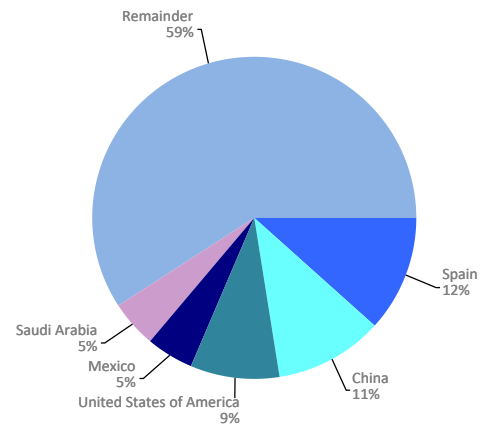


MARITIME TRAFFIC BY ORIGIN/DESTINATION

Ranking countries. Full TEU non transit

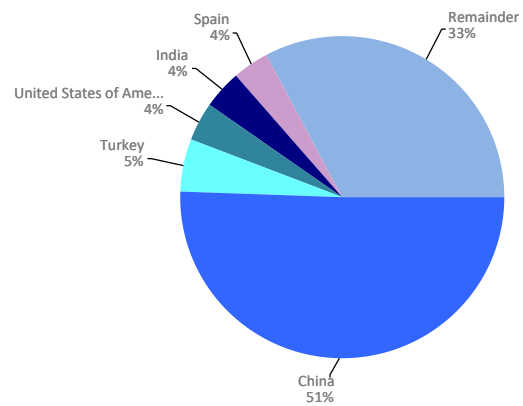
Loaded	Full TEU	% 25-24	% a/packaging
Spain	6.974	-4,1%	11,6%
China	6.610	1,5%	11,0%
United States of America	5.286	29,2%	8,8%
Mexico	2.965	26,4%	4,9%
Saudi Arabia	2.830	101,3%	4,7%
Morocco	2.035	-3,6%	3,4%
Turkey	1.986	-27,0%	3,3%
Algeria	1.947	9171,4%	3,2%
Korea (South)	1.775	42,0%	2,9%
United Arab Emirates	1.608	16,4%	2,7%
India	1.481	64,4%	2,5%
Japan	1.456	-29,3%	2,4%
Singapore	1.376	249,2%	2,3%
Malaysia	1.246	-1,1%	2,1%
Israel	1.186	-7,1%	2,0%
Remainder	19.579	-11,8%	32,4%
TOTAL	60.339	5,5%	100%

Main countries. Loaded



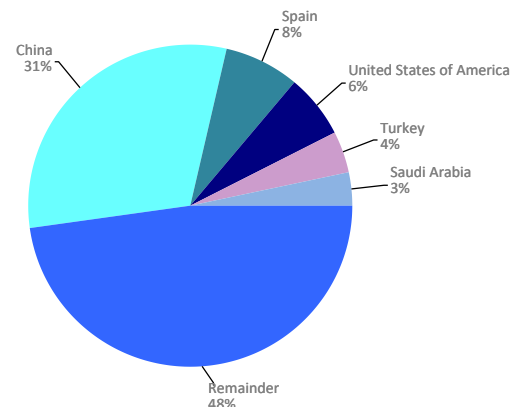
Unloaded	Full TEU	% 25-24	% a/packaging
China	30.721	52,5%	50,6%
Turkey	3.132	-8,3%	5,2%
United States of America	2.423	5,9%	4,0%
India	2.410	60,8%	4,0%
Spain	2.226	2,4%	3,7%
Vietnam	2.128	30,8%	3,5%
Korea (South)	1.748	44,7%	2,9%
Bangladesh	1.478	263,6%	2,4%
Saudi Arabia	1.182	89,1%	1,9%
Cambodia	1.041	203,5%	1,7%
Brazil	1.007	40,4%	1,7%
Egypt	943	33,2%	1,6%
Cote d'Ivoire	903	13,4%	1,5%
Thailand	721	18,0%	1,2%
Indonesia	683	63,7%	1,1%
Remainder	8.011	16,4%	13,2%
TOTAL	60.755	38,5%	100%

Main countries. Unloaded



Total	Full TEU	% 25-24	% a/packaging
China	37.331	40,0%	30,8%
Spain	9.199	-2,6%	7,6%
United States of America	7.709	20,8%	6,4%
Turkey	5.117	-16,6%	4,2%
Saudi Arabia	4.012	97,5%	3,3%
India	3.891	62,1%	3,2%
Korea (South)	3.523	43,3%	2,9%
Mexico	3.467	29,5%	2,9%
Vietnam	2.956	17,9%	2,4%
Morocco	2.165	-7,1%	1,8%
Brazil	2.023	14,4%	1,7%
Algeria	1.957	4673,2%	1,6%
Egypt	1.953	-5,3%	1,6%
Japan	1.930	-21,1%	1,6%
United Arab Emirates	1.889	21,1%	1,6%
Remainder	31.973	6,0%	26,4%
TOTAL	121.094	19,8%	100%

Main countries. Total



RAILWAY TRAFFIC

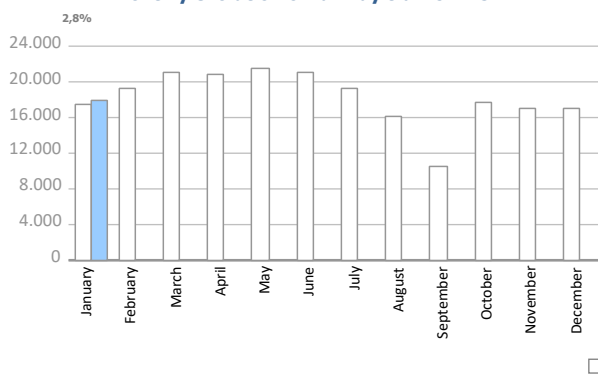
Monthly evolution of railway traffic. TEU

Monthly evolution of railway traffic	TEU 2024			TEU 2025			%		% of total port traffic 2025
	Loaded	Unloaded	Total	Loaded	Unloaded	Total	Monthly	Accumulated	
January	7.901	9.633	17.534	8.306	9.716	18.022	2,8%	2,8%	10,7%
February	8.751	10.545	19.296						
March	9.664	11.438	21.102						
April	10.070	10.684	20.754						
May	10.133	11.320	21.453						
June	10.637	10.334	20.971						
July	9.288	9.992	19.280						
August	7.503	8.699	16.202						
September	5.460	4.964	10.424						
October	8.560	9.245	17.805						
November	8.118	8.979	17.097						
December	8.208	8.913	17.121						
Total	104.293	114.746	219.039	8.306	9.716	18.022			10,7%

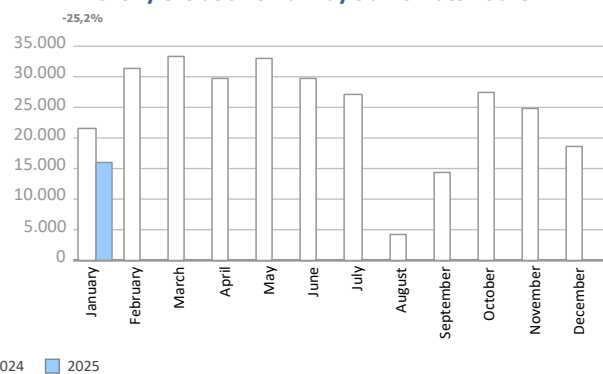
Monthly evolution of railway traffic. Automobile

Monthly evolution of railway traffic	Automobile 2024			Automobile 2025			%		% of total port traffic 2025
	Loaded	Unloaded	Total	Loaded	Unloaded	Total	Monthly	Accumulated	
January	2.696	18.708	21.404	2.968	13.032	16.000	-25,2%	-25,2%	50,7%
February	4.150	27.099	31.249						
March	4.458	28.926	33.384						
April	3.573	26.030	29.603						
May	4.399	28.658	33.057						
June	4.552	25.180	29.732						
July	5.752	21.286	27.038						
August	799	3.375	4.174						
September	1.963	12.459	14.422						
October	3.699	23.902	27.601						
November	4.076	20.732	24.808						
December	2.778	15.809	18.587						
Total	42.895	252.164	295.059	2.968	13.032	16.000			50,7%

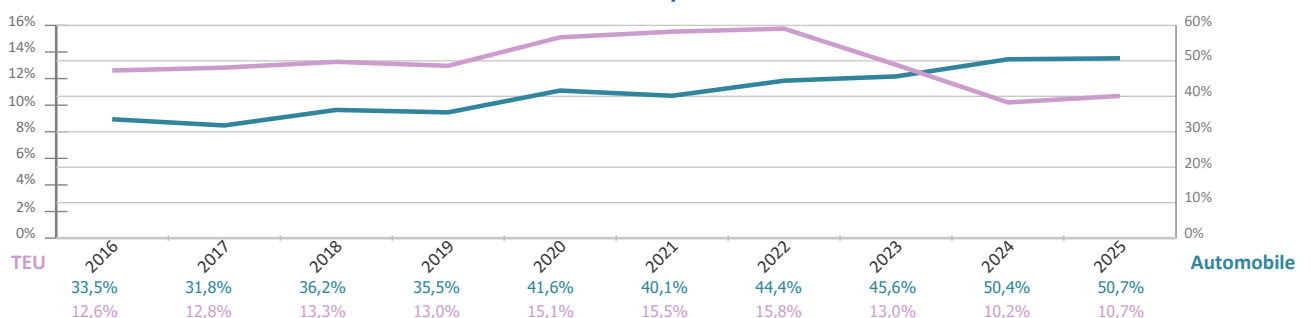
Monthly evolution of railway traffic. TEU



Monthly evolution of railway traffic. Automobile



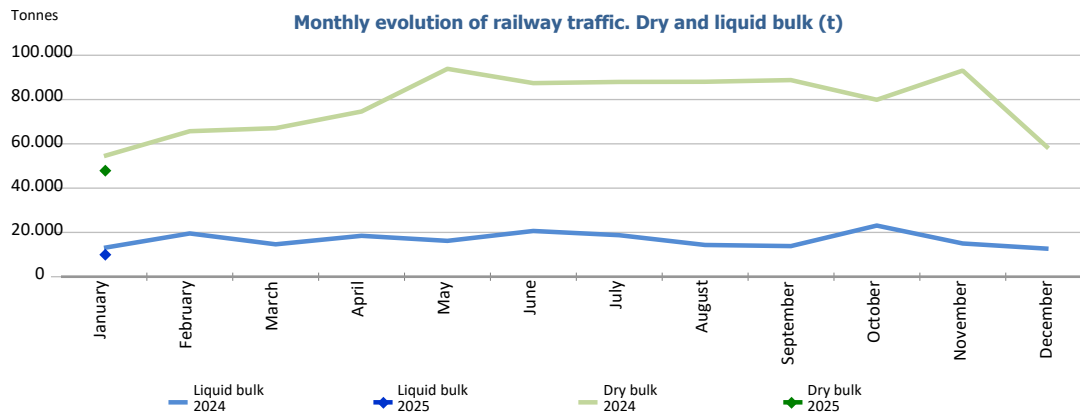
Share evolution of railway traffic



RAILWAY TRAFFIC

Monthly evolution of railway traffic. Dry and liquid bulk. Tonnes

Monthly evolution of railway traffic	Tonnes 2024			Tonnes 2025			%	
	Dry bulk	Liquid bulk	Total	Dry bulk	Liquid bulk	Total	Monthly	Accumulated
January	54.457	13.024	67.481	47.878	10.040	57.918	-14,2%	-14,2%
February	65.710	19.534	85.244					
March	67.073	14.630	81.703					
April	74.604	18.473	93.077					
May	93.873	16.191	110.064					
June	87.416	20.649	108.065					
July	87.962	18.748	106.710					
August	88.033	14.326	102.359					
September	88.794	13.828	102.622					
October	79.898	23.100	102.998					
November	93.076	15.008	108.084					
December	57.967	12.619	70.586					
Total	938.863	200.130	1.138.993	47.878	10.040	57.918		



Railway traffic.

Railway gauge traffic (u)	Monthly accumulated		%	% of accumulated total 2025
	2024	2025		
Iberian gauge	546	501	-8,2%	62,4%
UIC	59	68	15,3%	8,5%
FGC	238	234	-1,7%	29,1%
Total	843	803	-4,7%	100%

