

Port of Barcelona traffic statistics

Accumulated data December 2024

Statistics Service

Index

Traffic indicators

Total traffic	3
Main indicators	4
Breakdown of total traffic	5
Breakdown of traffic in transit	6
Monthly evolution of traffic	7

Container traffic

TEU evolution	8
Container traffic (TEU)	9

Passenger traffic

Passenger traffic	10
Passenger classification	11

Automobile traffic

Automobile traffic	12
--------------------	----

Short Sea Shipping traffic (SSS)

SSS Goods classification	13
SSS General cargo and Motorways of the sea (MoS)	14
SSS Ranking countries	15

Vessel traffic

Vessel traffic	16
----------------	----

Goods traffic

Mode of packaging and navigation	17
Goods by classification 4.3.7.	18
Goods ranking	19
Containerized goods by classification 4.3.7.	20

Maritime traffic by origin/destination

Geographical areas. Tonnes	21
Geographical areas. Full TEU non transit	22
Ranqing countries. Full TEU non transit	23

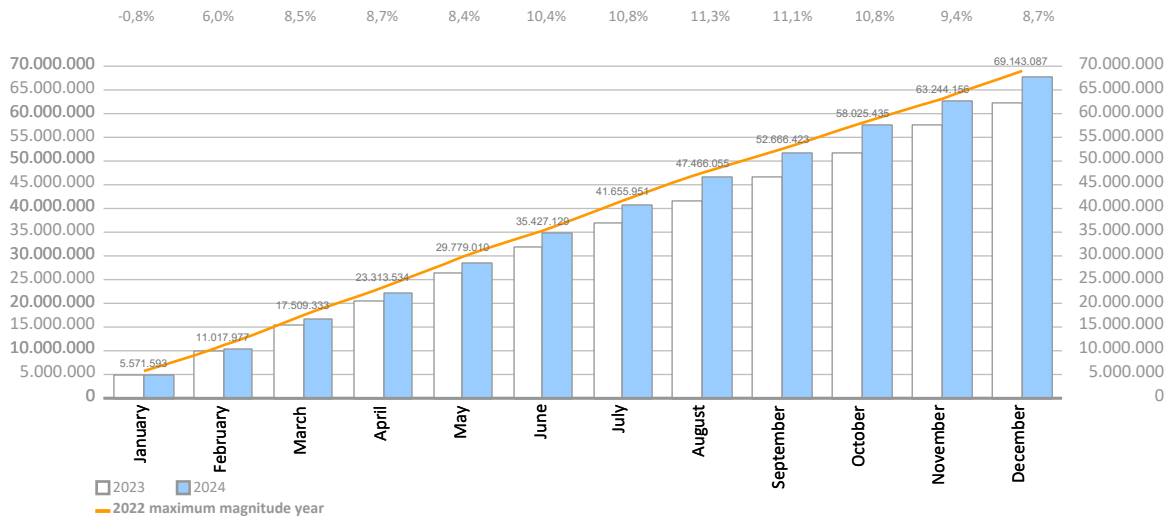
Railway traffic

Evolution of railway traffic (TEU and automobile)	24
Evolution of railway traffic (Solid and liquid bulk)	25
Railway gauge traffic	25

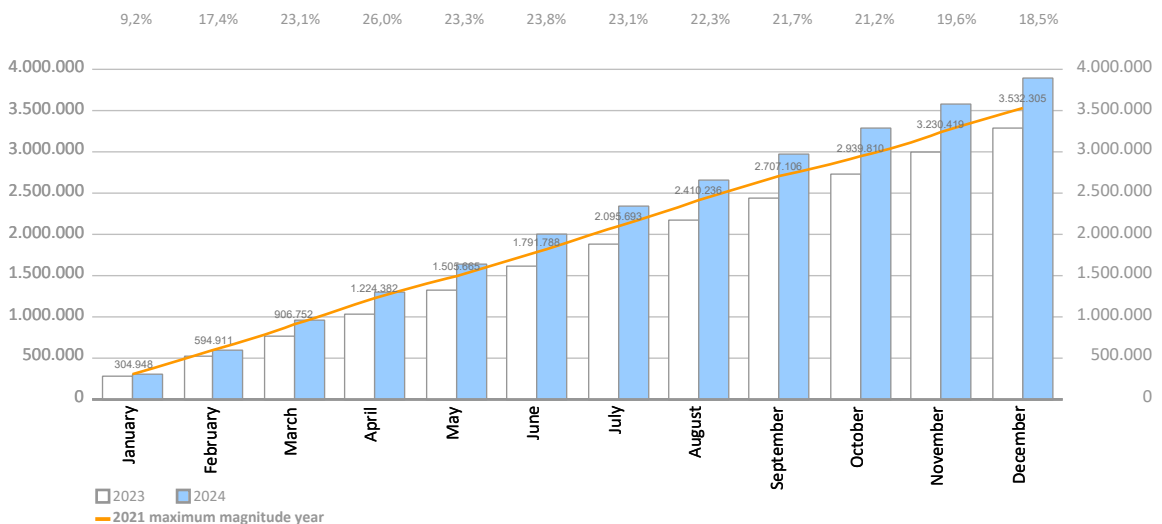
TRAFFIC INDICATORS

Total traffic	Monthly accumulated				% 24-23 accum. November	% 24-23 accum. October	Total traffic 2023
	2023	2024	Diff. 24-23	%			
Total throughput (tonnes)	62.428.027	67.830.621	5.402.594	8,7%	9,4%	10,8%	62.428.027
Supplies	1.602.836	1.876.034	273.198	17,0%	14,5%	14,1%	1.602.836
Fishing	1.544	2.577	1.034	66,9%	67,4%	75,6%	1.544
TOTAL TRAFFIC (tonnes)	64.032.407	69.709.233	5.676.826	8,9%	9,6%	10,9%	64.032.407
TEU	3.280.247	3.885.736	605.489	18,5%	19,6%	21,2%	3.280.247
UTI	416.003	427.849	11.847	2,8%	3,1%	3,4%	416.003
Automobiles (units)	790.318	682.082	-108.236	-13,7%	-12,8%	-13,2%	790.318
Vessels (units)	8.766	8.383	-383	-4,4%	-4,2%	-4,0%	8.766
Railway traffic (units)	10.437	10.994	557	5,3%	5,4%	6,0%	10.437
Cruise passengers (units)	3.569.125	3.655.981	86.856	2,4%	2,6%	3,1%	3.569.125
Ferry passengers (units)	1.735.495	1.739.467	3.972	0,2%	0,7%	0,6%	1.735.495
Automobile passengers (units)	515.293	530.925	15.632	3,0%	3,2%	2,9%	515.293

Monthly evolution of the accumulated traffic of goods. Tonnes



Monthly evolution of the accumulated traffic of goods. TEU



TRAFFIC INDICATORS

Main indicators	Monthly accumulated				Last 12 months	Total traffic 2023	% 12 months-2023
	2023	2024	Diff. 24-23	%			
Goods indicators by navigation and operation (tonnes)							
Navigation (t)	62.428.027	67.830.621	5.402.594	8,7%	67.830.621	62.428.027	8,7%
Domestic	8.029.052	8.540.338	511.286	6,4%	8.540.338	8.029.052	6,4%
Foreign	54.398.975	59.290.283	4.891.309	9,0%	59.290.283	54.398.975	9,0%
Operation (t)	62.428.027	67.830.621	5.402.594	8,7%	67.830.621	62.428.027	8,7%
Loaded	19.163.336	19.889.633	726.298	3,8%	19.889.633	19.163.336	3,8%
Unloaded	22.667.699	22.886.042	218.343	1,0%	22.886.042	22.667.699	1,0%
Transit	20.596.992	25.054.946	4.457.954	21,6%	25.054.946	20.596.992	21,6%
Goods indicators by main units							
Containers (TEU)	3.280.247	3.885.736	605.489	18,5%	3.885.736	3.280.247	18,5%
TEU O/D	1.960.362	2.146.649	186.288	9,5%	2.146.649	1.960.362	9,5%
TEU transit	1.319.886	1.739.087	419.201	31,8%	1.739.087	1.319.886	31,8%
Containerized tonnes	33.526.230	37.681.758	4.155.527	12,4%	37.681.758	33.526.230	12,4%
Level of containerization	74,90%	76,37%			76,37%	74,90%	
Passengers (u)	5.304.620	5.395.448	90.828	1,7%	5.395.448	5.304.620	1,7%
Regular line	1.735.495	1.739.467	3.972	0,2%	1.739.467	1.735.495	0,2%
Pleasure cruises	3.569.125	3.655.981	86.856	2,4%	3.655.981	3.569.125	2,4%
Automobiles (u)	790.318	682.082	-108.236	-13,7%	682.082	790.318	-13,7%
Loaded	412.432	428.999	16.567	4,0%	428.999	412.432	4,0%
Unloaded	255.582	155.960	-99.622	-39,0%	155.960	255.582	-39,0%
Transit	122.304	97.123	-25.181	-20,6%	97.123	122.304	-20,6%
Vessels (u)	8.766	8.383	-383	-4,4%	8.383	8.766	-4,4%
Number of calls	8.766	8.383	-383	-4,4%	8.383	8.766	-4,4%
GT	374.300.885	364.239.329	-10.061.556	-2,7%	364.239.329	374.300.885	-2,7%
Average tonnes by vessel	7.122	8.091	970	13,6%	8.091	7.122	13,6%
UTI	416.003	427.849	11.847	2,8%	427.849	416.003	2,8%
Domestic	259.529	267.686	8.157	3,1%	267.686	259.529	3,1%
% Full	61,9%	62,1%			62,1%	61,9%	
Foreign	156.474	160.163	3.690	2,4%	160.163	156.474	2,4%
% Full	90,4%	89,6%			89,6%	90,4%	

TRAFFIC INDICATORS

Breakdown of total traffic (tonnes)	Monthly accumulated				% 24-23 accum. November	% 24-23 accum. October	% of total accum. 2024
	2023	2024	Diff. 24-23	%			
Goods indicators by type of packaging (t)	62.428.027	67.830.621	5.402.594	8,7%	9,4%	10,8%	100%
Liquid bulk	12.871.578	13.688.693	817.115	6,3%	8,9%	10,1%	20,2%
Hydrocarbons	9.378.133	9.377.546	-588	-0,0%	1,4%	2,6%	13,8%
Petrol	2.721.664	3.836.073	1.114.409	40,9%	49,2%	56,1%	5,7%
Diesel oils	2.205.973	2.378.362	172.389	7,8%	12,3%	9,7%	3,5%
Natural gas	3.041.659	2.023.868	-1.017.791	-33,5%	-36,8%	-39,0%	3,0%
Fuel oil	1.163.882	870.333	-293.549	-25,2%	-27,0%	-24,1%	1,3%
Other petroleum products	222.404	248.850	26.446	11,9%	10,9%	27,6%	0,4%
Remainder	22.551	20.060	-2.491	-11,0%	-7,8%	0,5%	0,0%
Other liquid bulk	3.493.445	4.311.148	817.702	23,4%	29,5%	30,1%	6,4%
Chemical products	1.153.746	2.402.187	1.248.442	108,2%	121,1%	111,3%	3,5%
Biofuel	1.385.154	972.618	-412.536	-29,8%	-28,1%	-24,0%	1,4%
Oils and fats	867.992	833.513	-34.479	-4,0%	-0,9%	2,3%	1,2%
Natural/artificial fertilizer	45.089	53.164	8.075	17,9%	9,2%	9,2%	0,1%
Other cargo by type	23.578	32.993	9.415	39,9%	173,4%	378,8%	0,0%
Remainder	17.887	16.672	-1.215	-6,8%	39,9%	38,7%	0,0%
Dry bulk	4.793.819	4.799.502	5.683	0,1%	-1,7%	-2,7%	7,1%
Special installation	4.480.234	4.521.021	40.786	0,9%	-0,8%	-2,0%	6,7%
Soya bean	1.516.103	1.672.893	156.791	10,3%	10,8%	9,3%	2,5%
Cereals and flours	948.876	853.689	-95.187	-10,0%	-8,4%	-4,7%	1,3%
Cement and clinker	945.088	848.087	-97.001	-10,3%	-11,8%	-22,2%	1,3%
Potashes	500.090	597.483	97.393	19,5%	10,9%	20,5%	0,9%
Common salt	546.599	518.033	-28.566	-5,2%	-9,6%	-11,2%	0,8%
Remainder	23.479	30.836	7.357	31,3%	21,8%	13,1%	0,0%
Without special installation	313.584	278.481	-35.103	-11,2%	-13,9%	-12,9%	0,4%
Scrap iron	196.179	166.616	-29.563	-15,1%	-21,8%	-21,1%	0,2%
Other non-metallic minerals	61.167	44.706	-16.461	-26,9%	-9,2%	-28,8%	0,1%
Chemical products	21.700	21.495	-205	-0,9%	-14,8%	6,9%	0,0%
Other minerals and metallic waste	16.416	21.150	4.734	28,8%	28,8%	28,8%	0,0%
Common salt	11.917	15.263	3.346	28,1%	4,7%	4,7%	0,0%
Remainder	6.206	9.251	3.045	49,1%	49,1%		0,0%
General cargo	44.762.630	49.342.426	4.579.797	10,2%	10,8%	12,4%	72,7%
Containerized	33.526.230	37.681.758	4.155.527	12,4%	13,1%	15,2%	55,6%
Tare of containers	6.706.557	7.863.476	1.156.919	17,3%	18,5%	20,1%	11,6%
Chemical products	4.871.141	6.211.483	1.340.343	27,5%	27,7%	27,5%	9,2%
Other cargo by type	3.620.529	4.294.696	674.167	18,6%	19,8%	21,4%	6,3%
Other food products	3.813.917	2.973.533	-840.384	-22,0%	-21,7%	-15,6%	4,4%
Machinery and spare parts	2.084.720	2.522.745	438.026	21,0%	22,8%	23,5%	3,7%
Remainder	12.429.367	13.815.824	1.386.457	11,2%	11,5%	13,5%	20,4%
Non-containerized	11.236.399	11.660.669	424.269	3,8%	3,9%	4,4%	17,2%
Tare of platform and wagons (Ro-Ro)	4.299.165	4.438.519	139.354	3,2%	3,1%	3,1%	6,5%
Other cargo by type	1.805.593	1.947.690	142.097	7,9%	8,1%	8,6%	2,9%
Machinery and spare parts	1.126.617	1.143.117	16.500	1,5%	2,9%	4,0%	1,7%
Automobiles and parts	1.305.420	1.091.020	-214.401	-16,4%	-15,9%	-16,7%	1,6%
Other food products	532.018	542.822	10.803	2,0%	1,8%	1,4%	0,8%
Remainder	2.167.586	2.497.501	329.915	15,2%	15,0%	16,9%	3,7%

TRAFFIC INDICATORS

Breakdown of traffic in transit (tonnes)	Monthly accumulated				% 24-23 accum. November	% 24-23 accum. October	% of total accum. 2024
	2023	2024	Diff. 24-23	%			
Goods indicators by type of packaging (t)	20.596.992	25.054.946	4.457.954	21,6%	25,0%	30,3%	100%
Liquid bulk	4.246.901	5.945.110	1.698.209	40,0%	45,9%	55,2%	23,7%
Hydrocarbons	2.744.760	3.740.734	995.973	36,3%	38,6%	50,1%	14,9%
Petrol	1.191.968	2.353.215	1.161.247	97,4%	104,5%	121,3%	9,4%
Fuel oil	824.996	700.459	-124.537	-15,1%	-18,1%	-17,0%	2,8%
Diesel oils	652.547	661.575	9.029	1,4%	-1,6%	7,1%	2,6%
Other petroleum products	75.249	25.484	-49.765	-66,1%	-66,1%	-31,5%	0,1%
Remainder	0	0	0				0,0%
Other liquid bulk	1.502.141	2.204.376	702.235	46,7%	59,7%	64,4%	8,8%
Chemical products	535.406	1.491.905	956.500	178,6%	203,9%	187,3%	6,0%
Biofuel	934.568	662.624	-271.943	-29,1%	-24,7%	-15,6%	2,6%
Oils and fats	19.087	38.449	19.362	101,4%	101,4%	101,4%	0,2%
Other cargo by type	13.080	11.397	-1.684	-12,9%	74,3%	269,7%	0,0%
Remainder	0	0	0				0,0%
Dry bulk	38.163	0	-38.163				0,0%
Special installation	38.163	0	-38.163				0,0%
Cereals and flours	25.397	0	-25.397				0,0%
Potashes	12.766	0	-12.766				0,0%
Remainder	0	0	0				0,0%
Without special installation	0	0	0				0,0%
Remainder	0	0	0				0,0%
General cargo	16.311.928	19.109.836	2.797.908	17,2%	19,8%	24,2%	76,3%
Containerized	15.850.679	18.611.524	2.760.844	17,4%	19,9%	24,3%	74,3%
Tare of containers	2.725.417	3.524.016	798.600	29,3%	32,9%	36,6%	14,1%
Chemical products	1.793.871	2.591.047	797.176	44,4%	44,9%	43,5%	10,3%
Other cargo by type	1.615.882	2.074.096	458.213	28,4%	32,7%	36,8%	8,3%
Other food products	2.513.989	1.741.823	-772.166	-30,7%	-29,7%	-21,6%	7,0%
Other construction materials	917.285	1.506.188	588.902	64,2%	63,8%	60,8%	6,0%
Remainder	6.284.235	7.174.353	890.119	14,2%	17,3%	22,0%	28,6%
Non-containerized	461.249	498.312	37.063	8,0%	16,5%	21,1%	2,0%
Automobiles and parts	198.197	174.372	-23.825	-12,0%	-7,9%	-8,1%	0,7%
Tare of platform and wagons (Ro-Ro)	61.248	82.386	21.138	34,5%	48,9%	59,2%	0,3%
Other cargo by type	58.084	62.185	4.101	7,1%	15,2%	24,3%	0,2%
Machinery and spare parts	66.952	53.466	-13.486	-20,1%	-15,7%	-15,8%	0,2%
Wines, beverages, spirits and derivatives	29.073	42.067	12.994	44,7%	65,2%	82,6%	0,2%
Remainder	47.695	83.836	36.141	75,8%	104,2%	125,5%	0,3%

TRAFFIC INDICATORS

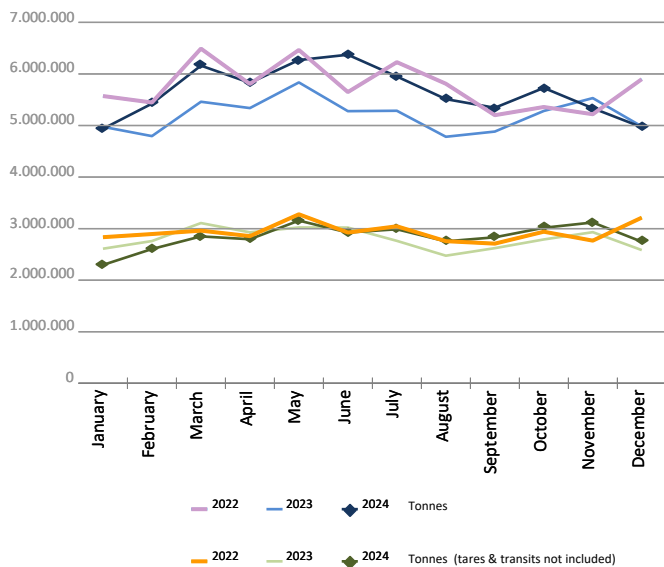
Monthly evolution of traffic. Tonnes

Monthly evolution of traffic	Total tonnes			%		Tonnes (tares & transits not included)			%	
	2023	2024	Diff. 24-23	Monthly	Accumulated	2023	2024	Diff. 24-23	Monthly	Accumulated
January	4.974.831	4.935.929	-38.903	-0,8%	-0,8%	2.610.318	2.296.193	-314.125	-12,0%	-12,0%
February	4.794.198	5.423.831	629.633	13,1%	6,0%	2.759.120	2.604.412	-154.707	-5,6%	-8,7%
March	5.460.892	6.161.232	700.340	12,8%	8,5%	3.107.637	2.849.601	-258.036	-8,3%	-8,6%
April	5.337.978	5.828.363	490.385	9,2%	8,7%	2.928.111	2.794.248	-133.864	-4,6%	-7,5%
May	5.835.623	6.269.807	434.184	7,4%	8,4%	3.022.620	3.155.549	132.929	4,4%	-5,0%
June	5.278.368	6.372.468	1.094.100	20,7%	10,4%	3.020.402	2.924.542	-95.860	-3,2%	-4,7%
July	5.286.328	5.950.983	664.655	12,6%	10,8%	2.762.709	2.987.760	225.052	8,1%	-3,0%
August	4.781.466	5.511.935	730.469	15,3%	11,3%	2.474.596	2.753.601	279.005	11,3%	-1,4%
September	4.882.475	5.343.856	461.381	9,4%	11,1%	2.621.228	2.831.667	210.438	8,0%	-0,4%
October	5.282.218	5.729.220	447.002	8,5%	10,8%	2.789.826	3.016.930	227.104	8,1%	0,4%
November	5.531.706	5.335.465	-196.241	-3,5%	9,4%	2.931.465	3.119.252	187.788	6,4%	1,0%
December	4.981.943	4.967.530	-14.413	-0,3%	8,7%	2.583.949	2.746.327	162.378	6,3%	1,4%
Total	62.428.027	67.830.621				33.611.981	34.080.083			

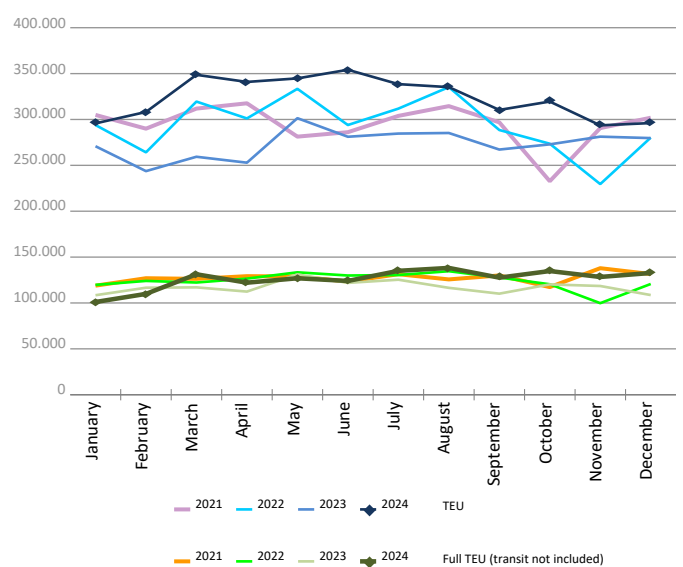
Monthly evolution of traffic. TEU

Monthly evolution of traffic	Total TEU			%		Full TEU (transit not included)			%	
	2023	2024	Diff. 24-23	Monthly	Accumulated	2023	2024	Diff. 24-23	Monthly	Accumulated
January	270.816	295.728	24.912	9,2%	9,2%	108.430	101.061	-7.369	-6,8%	-6,8%
February	243.685	308.167	64.482	26,5%	17,4%	116.640	109.884	-6.757	-5,8%	-6,3%
March	259.357	348.654	89.296	34,4%	23,1%	117.012	131.259	14.247	12,2%	0,0%
April	252.909	340.927	88.018	34,8%	26,0%	112.397	122.134	9.736	8,7%	2,2%
May	301.382	344.790	43.408	14,4%	23,3%	131.146	126.935	-4.212	-3,2%	1,0%
June	281.169	354.151	72.983	26,0%	23,8%	121.905	124.002	2.098	1,7%	1,1%
July	284.638	338.520	53.882	18,9%	23,1%	125.356	135.047	9.692	7,7%	2,1%
August	285.264	335.239	49.975	17,5%	22,3%	116.482	138.193	21.711	18,6%	4,1%
September	267.204	310.401	43.197	16,2%	21,7%	110.162	127.594	17.432	15,8%	5,3%
October	272.864	319.503	46.639	17,1%	21,2%	120.252	134.798	14.546	12,1%	6,0%
November	281.267	293.578	12.310	4,4%	19,6%	118.502	128.361	9.859	8,3%	6,2%
December	279.693	296.081	16.388	5,9%	18,5%	108.620	132.673	24.053	22,1%	7,5%
Total	3.280.247	3.885.736				1.406.902	1.511.937			

Goods (total tonnes)



Containers (total TEU)



CONTAINER TRAFFIC

TEU evolution

Full-unloaded foreign	Full TEU			%		Full-loaded foreign	Full TEU			%	
	2023	2024	Diff. 24-23	Monthly	Accumulated		2023	2024	Diff. 24-23	Monthly	Accumulated
January	49.138	41.691	-7.447	-15,2%	-15,2%	January	51.046	49.933	-1.113	-2,2%	-2,2%
February	51.449	44.498	-6.951	-13,5%	-14,3%	February	56.052	55.500	-552	-1,0%	-1,6%
March	44.515	58.372	13.858	31,1%	-0,4%	March	60.782	61.863	1.081	1,8%	-0,3%
April	51.432	57.413	5.982	11,6%	2,8%	April	51.392	55.227	3.835	7,5%	1,5%
May	64.095	56.609	-7.486	-11,7%	-0,8%	May	56.516	60.495	3.979	7,0%	2,6%
June	53.940	59.082	5.142	9,5%	1,0%	June	57.195	54.880	-2.315	-4,0%	1,5%
July	59.685	63.600	3.915	6,6%	1,9%	July	54.831	61.621	6.791	12,4%	3,0%
August	56.638	66.928	10.290	18,2%	4,0%	August	50.134	61.448	11.315	22,6%	5,3%
September	48.415	65.349	16.935	35,0%	7,1%	September	50.745	52.238	1.493	2,9%	5,0%
October	52.489	61.771	9.282	17,7%	8,2%	October	57.938	62.384	4.447	7,7%	5,3%
November	48.781	58.499	9.718	19,9%	9,2%	November	59.645	58.924	-721	-1,2%	4,7%
December	43.001	58.349	15.349	35,7%	11,0%	December	55.662	65.906	10.244	18,4%	5,8%
Total	623.574	692.159				Total	661.935	700.417			

Full-unloaded domestic	Full TEU			%		Full-loaded domestic	Full TEU			%	
	2023	2024	Diff. 24-23	Monthly	Accumulated		2023	2024	Diff. 24-23	Monthly	Accumulated
January	1.702	2.174	473	27,8%	27,8%	January	6.545	7.264	719	11,0%	11,0%
February	1.836	2.269	434	23,6%	25,6%	February	7.304	7.617	313	4,3%	7,4%
March	2.227	2.280	53	2,4%	16,6%	March	9.488	8.744	-744	-7,8%	1,2%
April	1.818	2.011	194	10,6%	15,2%	April	7.756	7.483	-274	-3,5%	0,0%
May	2.223	2.226	3	0,1%	11,8%	May	8.313	7.606	-708	-8,5%	-1,8%
June	1.938	1.919	-19	-1,0%	9,7%	June	8.833	8.122	-712	-8,1%	-2,9%
July	1.881	1.988	107	5,7%	9,1%	July	8.960	7.839	-1.121	-12,5%	-4,4%
August	1.989	1.935	-54	-2,7%	7,6%	August	7.722	7.882	161	2,1%	-3,6%
September	2.163	1.981	-182	-8,4%	5,7%	September	8.839	8.026	-814	-9,2%	-4,3%
October	2.164	2.370	206	9,5%	6,1%	October	7.662	8.273	611	8,0%	-3,2%
November	1.913	2.091	178	9,3%	6,4%	November	8.164	8.848	685	8,4%	-2,1%
December	1.886	2.097	211	11,2%	6,7%	December	8.072	6.322	-1.750	-21,7%	-3,7%
Total	23.737	25.339				Total	97.656	94.023			

Full - Transit	Full TEU			%		Empty	Empty TEU			%	
	2023	2024	Diff. 24-23	Monthly	Accumulated		2023	2024	Diff. 24-23	Monthly	Accumulated
January	97.136	112.121	14.985	15,4%	15,4%	January	65.251	82.546	17.296	26,5%	26,5%
February	71.919	117.906	45.987	63,9%	36,1%	February	55.126	80.377	25.251	45,8%	35,3%
March	83.589	133.678	50.089	59,9%	44,0%	March	58.757	83.718	24.961	42,5%	37,7%
April	83.961	134.377	50.417	60,0%	48,0%	April	56.551	84.416	27.865	49,3%	40,5%
May	97.501	116.212	18.711	19,2%	41,5%	May	72.735	101.644	28.909	39,7%	40,3%
June	84.537	140.218	55.681	65,9%	45,5%	June	74.728	89.932	15.204	20,3%	36,4%
July	93.112	121.808	28.696	30,8%	43,2%	July	66.171	81.665	15.494	23,4%	34,5%
August	83.801	107.920	24.119	28,8%	41,5%	August	84.981	89.126	4.145	4,9%	29,8%
September	86.284	96.343	10.060	11,7%	38,2%	September	70.759	86.465	15.706	22,2%	28,9%
October	90.691	97.680	6.990	7,7%	35,0%	October	61.921	87.025	25.104	40,5%	30,0%
November	86.555	83.068	-3.488	-4,0%	31,5%	November	76.210	82.150	5.939	7,8%	27,7%
December	90.642	94.288	3.646	4,0%	29,1%	December	80.432	69.121	-11.311	-14,1%	23,6%
Total	1.049.725	1.355.616				Total	823.621	1.018.183			

CONTAINER TRAFFIC

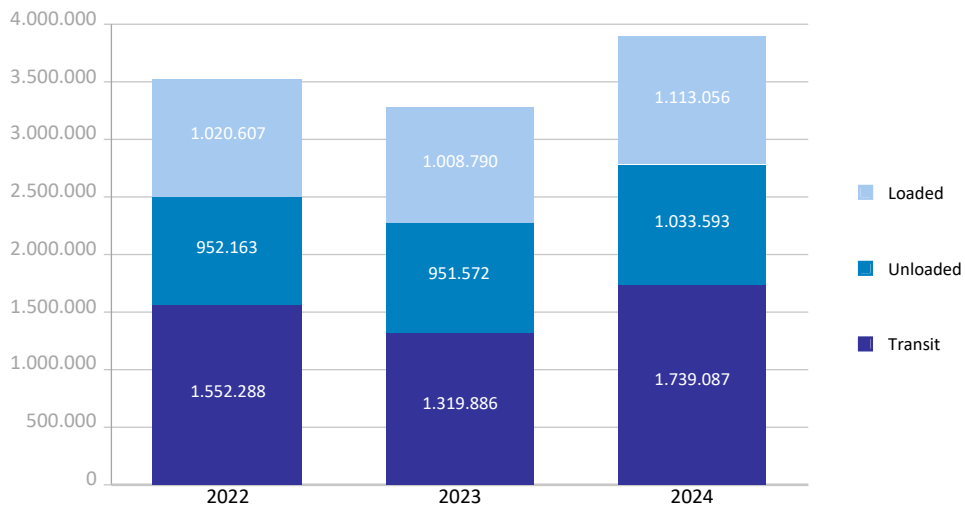
TEU

Container traffic	Monthly accumulated 2023			Monthly accumulated 2024			%
	Domestic	Foreign	Total	Domestic	Foreign	Total	
Total traffic	223.471	3.056.776	3.280.247	218.745	3.666.991	3.885.736	18,5%
Unloaded	116.459	1.530.841	1.647.300	114.303	1.834.711	1.949.014	18,3%
Roll On-Roll Off	26.488	14.856	41.344	22.676	7.671	30.347	-26,6%
Lift On-Lift Off	89.971	1.515.985	1.605.956	91.627	1.827.040	1.918.667	19,5%
Loaded	107.012	1.525.935	1.632.947	104.442	1.832.280	1.936.722	18,6%
Roll On-Roll Off	28.730	15.000	43.730	23.802	7.832	31.634	-27,7%
Lift On-Lift Off	78.282	1.510.935	1.589.217	80.640	1.824.448	1.905.088	19,9%

Breakdown by navigation and operation	Monthly accumulated 2023			Monthly accumulated 2024			%
	Domestic	Foreign	Total	Domestic	Foreign	Total	
Loaded	106.801	901.989	1.008.790	104.260	1.008.796	1.113.056	10,3%
Full	97.656	661.935	759.591	94.023	700.417	794.440	4,6%
Empty	9.145	240.055	249.200	10.238	308.379	318.617	27,9%
Unloaded	112.696	838.876	951.572	110.956	922.637	1.033.593	8,6%
Full	23.737	623.574	647.311	25.339	692.159	717.497	10,8%
Empty	88.959	215.302	304.261	85.618	230.479	316.096	3,9%
Transit	3.974	1.315.912	1.319.886	3.529	1.735.558	1.739.087	31,8%
Full	38	1.049.687	1.049.725	143	1.355.474	1.355.616	29,1%
Empty	3.936	266.225	270.161	3.386	380.085	383.471	41,9%

Total traffic	223.471	3.056.776	3.280.247	218.745	3.666.991	3.885.736	18,5%
Full	121.431	2.335.195	2.456.626	119.504	2.748.049	2.867.553	16,7%
Empty	102.040	721.581	823.621	99.241	918.942	1.018.183	23,6%
% Empty	45,7%	23,6%	25,1%	45,4%	25,1%	26,2%	
% Transit	1,8%	43,0%	40,2%	1,6%	47,3%	44,8%	

General cargo distribution by operation (TEU)

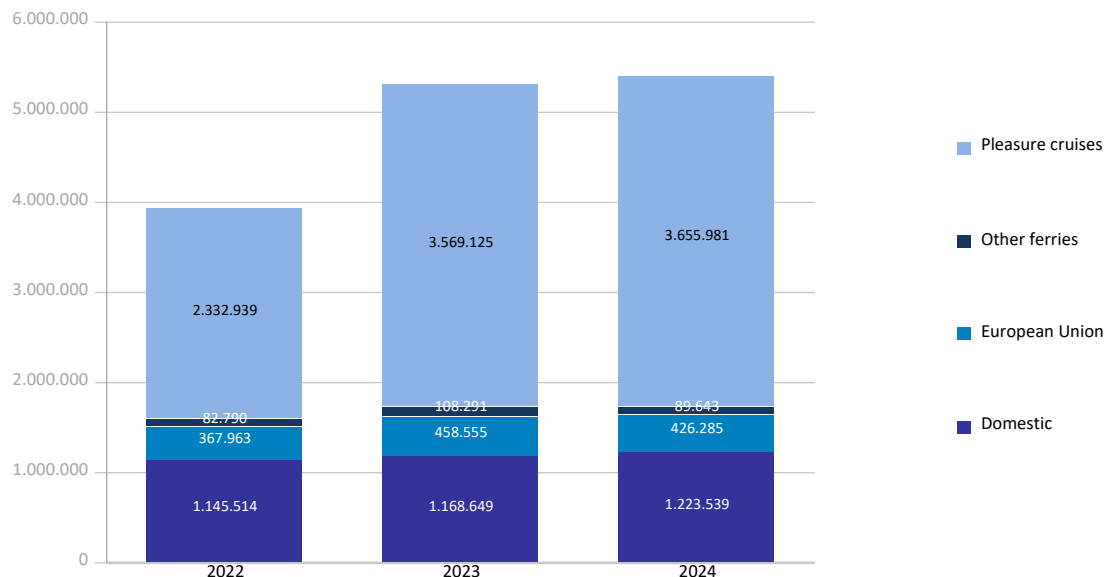


PASSENGER TRAFFIC

Total passenger traffic (units)	Monthly accumulated				% 24-23 accum. November	% 24-23 accum. October
	2023	2024	Diff. 24-23	%		
Total passengers	5.304.620	5.395.448	90.828	1,7%	2,0%	2,2%
Embarkation	1.842.004	1.914.207	72.203	3,9%	4,0%	4,0%
Disembarkation	1.800.348	1.873.686	73.338	4,1%	4,3%	4,4%
Transit	1.662.268	1.607.555	-54.713	-3,3%	-2,8%	-2,2%
Regular line ferries	1.735.495	1.739.467	3.972	0,2%	0,7%	0,6%
Embarkation	882.219	886.428	4.209	0,5%	0,9%	0,9%
Disembarkation	853.276	853.039	-237	-0,0%	0,4%	0,2%
Domestic	1.168.649	1.223.539	54.890	4,7%	5,1%	4,7%
Embarkation	600.211	630.621	30.410	5,1%	5,4%	5,1%
Disembarkation	568.438	592.918	24.480	4,3%	4,7%	4,1%
European Union	458.555	426.285	-32.270	-7,0%	-6,1%	-5,4%
Embarkation	226.796	209.867	-16.929	-7,5%	-6,4%	-5,6%
Disembarkation	231.759	216.418	-15.341	-6,6%	-5,8%	-5,3%
Other ferries	108.291	89.643	-18.648	-17,2%	-17,5%	-17,2%
Embarkation	55.212	45.940	-9.272	-16,8%	-17,8%	-18,3%
Disembarkation	53.079	43.703	-9.376	-17,7%	-17,2%	-16,1%
Pleasure cruises	3.569.125	3.655.981	86.856	2,4%	2,6%	3,1%
Embarkation	959.785	1.027.779	67.994	7,1%	6,9%	6,8%
Disembarkation	947.072	1.020.647	73.575	7,8%	7,8%	8,2%
Transit	1.662.268	1.607.555	-54.713	-3,3%	-2,8%	-2,2%

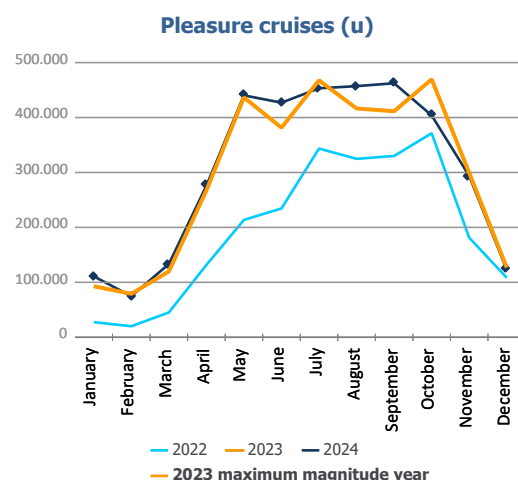
Total passenger calls (units)	Monthly accumulated				% 24-23 accum. November	% 24-23 accum. October
	2023	2024	Diff. 24-23	%		
Total number of calls	4.078	3.854	-224	-5,5%	-5,5%	-5,8%
Regular Line ferries	3.274	3.063	-211	-6,4%	-6,4%	-6,6%
Pleasure cruises	804	791	-13	-1,6%	-1,8%	-2,7%

Passenger traffic distribution (u)

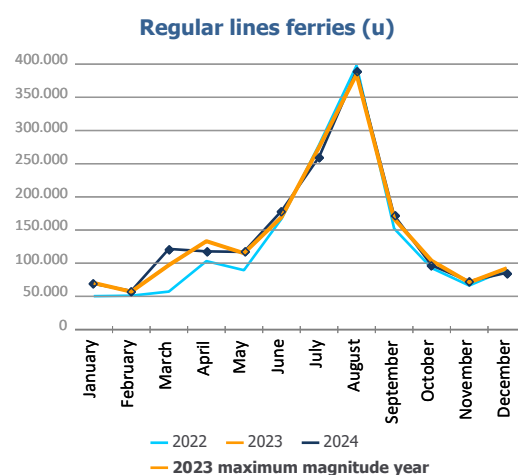


PASSENGER CLASSIFICATION

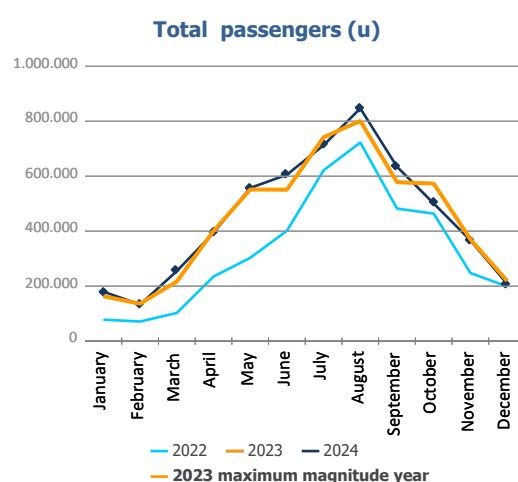
Monthly evolution of passenger traffic	Pleasure cruises			%	
	2023	2024	Diff. 24-23	Monthly	Accumulated
January	93.013	111.036	18.023	19,4%	19,4%
February	79.194	74.939	-4.255	-5,4%	8,0%
March	119.885	133.501	13.616	11,4%	9,4%
April	267.420	275.893	8.473	3,2%	6,4%
May	436.569	440.310	3.741	0,9%	4,0%
June	381.587	427.017	45.430	11,9%	6,2%
July	467.607	453.184	-14.423	-3,1%	3,8%
August	416.517	457.134	40.617	9,8%	4,9%
September	411.457	462.381	50.924	12,4%	6,1%
October	469.510	403.903	-65.607	-14,0%	3,1%
November	299.424	293.737	-5.687	-1,9%	2,6%
December	126.942	122.946	-3.996	-3,1%	2,4%
Total	3.569.125	3.655.981			



Monthly evolution of passenger traffic	Regular lines ferries			%	
	2023	2024	Diff. 24-23	Monthly	Accumulated
January	70.262	68.931	-1.331	-1,9%	-1,9%
February	57.059	58.232	1.173	2,1%	-0,1%
March	97.166	121.528	24.362	25,1%	10,8%
April	133.201	117.845	-15.356	-11,5%	2,5%
May	115.112	117.084	1.972	1,7%	2,3%
June	169.419	178.722	9.303	5,5%	3,1%
July	274.632	259.895	-14.737	-5,4%	0,6%
August	384.652	389.879	5.227	1,4%	0,8%
September	166.887	172.031	5.144	3,1%	1,1%
October	103.714	96.842	-6.872	-6,6%	0,6%
November	71.033	72.847	1.814	2,6%	0,7%
December	92.358	85.631	-6.727	-7,3%	0,2%
Total	1.735.495	1.739.467			



Monthly evolution of passenger traffic	Total passengers			%	
	2023	2024	Diff. 24-23	Monthly	Accumulated
January	163.275	179.967	16.692	10,2%	10,2%
February	136.253	133.171	-3.082	-2,3%	4,5%
March	217.051	255.029	37.978	17,5%	10,0%
April	400.621	393.738	-6.883	-1,7%	4,9%
May	551.681	557.394	5.713	1,0%	3,4%
June	551.006	605.739	54.733	9,9%	5,2%
July	742.239	713.079	-29.160	-3,9%	2,8%
August	801.169	847.013	45.844	5,7%	3,4%
September	578.344	634.412	56.068	9,7%	4,3%
October	573.224	500.745	-72.479	-12,6%	2,2%
November	370.457	366.584	-3.873	-1,0%	2,0%
December	219.300	208.577	-10.723	-4,9%	1,7%
Total	5.304.620	5.395.448			

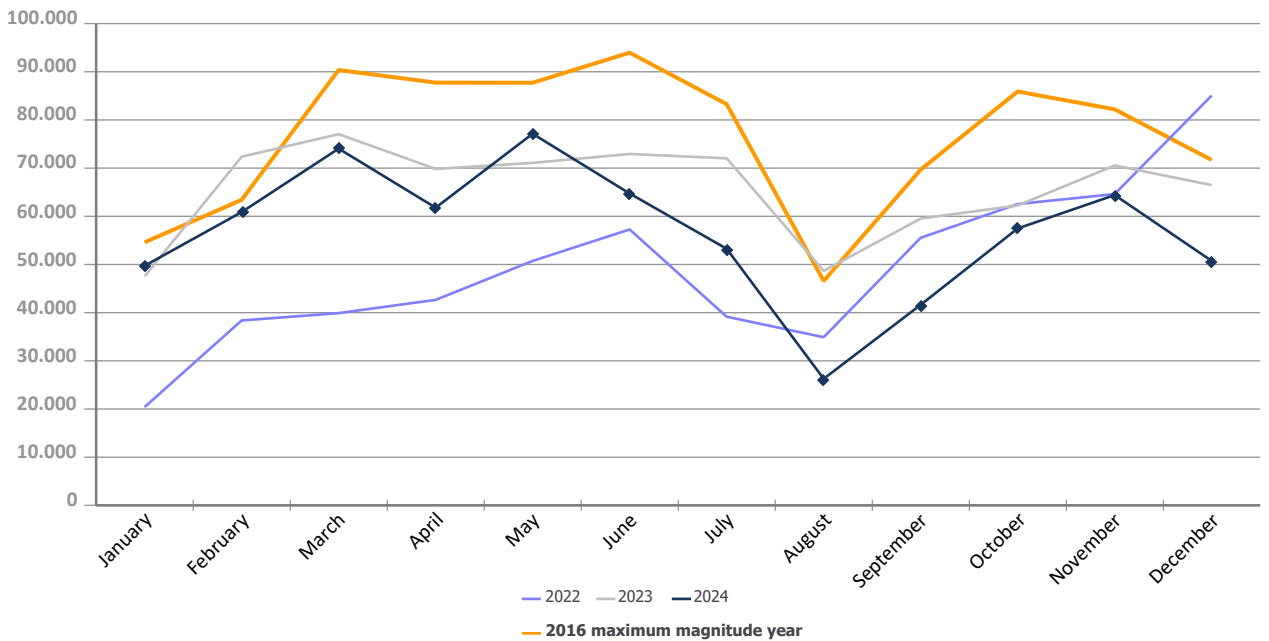


AUTOMOBILE TRAFFIC

Total automobile traffic (units)	Monthly accumulated				% 24-23 accum. November	% 24-23 accum. October
	2023	2024	Diff. 24-23	%		
Automobile traffic by navigation and operation	790.318	682.082	-108.236	-13,7%	-12,8%	-13,2%
Domestic	106.555	111.900	5.345	5,0%	3,2%	-0,8%
Loaded	86.870	85.372	-1.498	-1,7%	-2,0%	-2,2%
Unloaded	19.579	26.455	6.876	35,1%	27,5%	7,5%
Transit	106	73	-33	-31,1%	-31,1%	-31,1%
Foreign	683.763	570.182	-113.581	-16,6%	-15,4%	-15,2%
Loaded	325.562	343.627	18.065	5,5%	5,1%	4,3%
Unloaded	236.003	129.505	-106.498	-45,1%	-43,0%	-41,8%
Transit	122.198	97.050	-25.148	-20,6%	-16,8%	-16,5%

Monthly automobile traffic (u)	Monthly		Accumulated		%	
	2023	2024	2023	2024	Monthly	Accumulated
January	47.534	49.721	47.534	49.721	4,6%	4,6%
February	72.364	60.872	119.898	110.593	-15,9%	-7,8%
March	77.057	74.044	196.955	184.637	-3,9%	-6,3%
April	69.834	61.791	266.789	246.428	-11,5%	-7,6%
May	71.083	77.134	337.872	323.562	8,5%	-4,2%
June	72.935	64.728	410.807	388.290	-11,3%	-5,5%
July	72.037	53.260	482.844	441.550	-26,1%	-8,6%
August	48.671	26.273	531.515	467.823	-46,0%	-12,0%
September	59.527	41.628	591.042	509.451	-30,1%	-13,8%
October	62.244	57.476	653.286	566.927	-7,7%	-13,2%
November	70.552	64.412	723.838	631.339	-8,7%	-12,8%
December	66.480	50.743	790.318	682.082	-23,7%	-13,7%

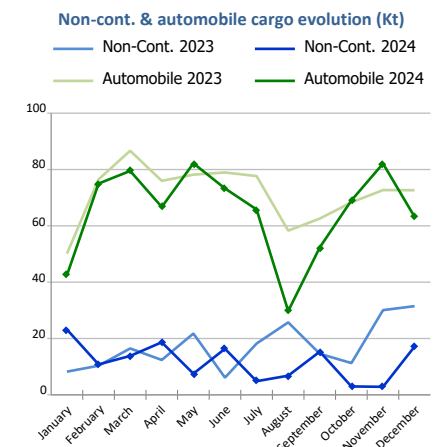
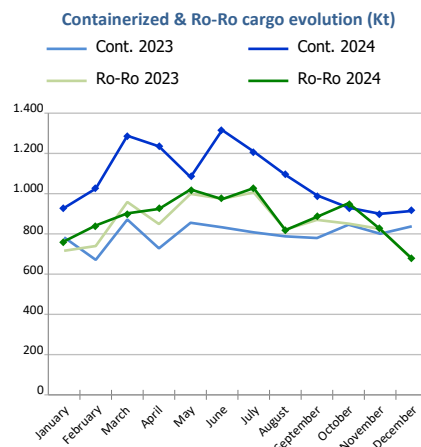
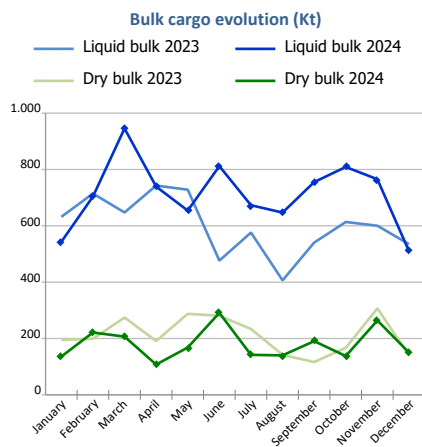
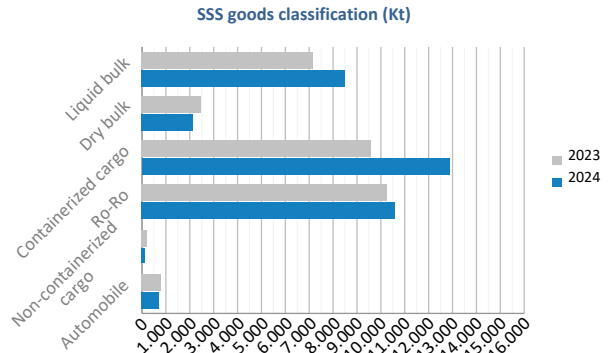
Evolution of monthly automobile traffic (u)



SHORT SEA SHIPPING (SSS)

SSS Goods classification

Goods classification. Tonnes	Monthly accumulated		%	% of total port traffic
	2023	2024		
Liquid bulk	7.212.984	8.557.686	18,6%	62,5%
Dry bulk	2.532.565	2.154.307	-14,9%	44,9%
Containerized cargo	9.599.430	12.913.004	34,5%	34,7%
Ro-Ro	10.284.432	10.608.452	3,2%	99,8%
Non-containerized cargo	206.665	140.276	-32,1%	27,8%
Automobile	858.609	781.422	-9,0%	77,1%
Total	30.694.685	35.155.147	14,5%	51,8%



SSS General Cargo	Spanish Islands			SSS Remainder			TOTAL		
	2023	2024	%	2023	2024	%	2023	2024	%
Containerized cargo	916.976	959.744	4,7%	8.682.454	11.953.260	37,7%	9.599.430	12.913.004	34,5%
O/D	892.921	924.125	3,5%	3.301.040	3.738.247	13,2%	4.193.962	4.662.372	11,2%
Transit	24.055	35.619	48,1%	5.381.413	8.215.013	52,7%	5.405.468	8.250.631	52,6%
Ro-Ro	5.797.899	6.067.592	4,7%	4.486.533	4.540.860	1,2%	10.284.432	10.608.452	3,2%
O/D	5.797.899	6.067.538	4,7%	4.226.160	4.181.725	-1,1%	10.024.059	10.249.263	2,2%
Transit	0	54	37,9%	260.372	359.135	37,9%	260.372	359.189	38,0%
Non-cont. cargo	2.288	1.261	-44,9%	204.377	139.015	-32,0%	206.665	140.276	-32,1%
O/D	2.288	1.261	-44,9%	199.897	135.707	-32,1%	202.185	136.967	-32,3%
Transit	0	0	-26,2%	4.480	3.309	-26,2%	4.481	3.309	-26,2%
Automobile	166.313	177.190	6,5%	692.297	604.232	-12,7%	858.609	781.422	-9,0%
O/D	165.904	177.137	6,8%	565.508	506.003	-10,5%	731.412	683.140	-6,6%
Transit	408	53	-87,1%	126.789	98.229	-22,5%	127.197	98.281	-22,7%



Short Sea Shipping (SSS):

The transport of cargo/goods and passengers between ports situated in the European Union or between these ports and non-European ports with a coastline in seas bordering Europe. This applies to cargo either originating from or is destined for these countries (in accordance with the European Shortsea Network).

Motorways of the sea (MoS):

Short Sea Shipping services as an alternative to road transport and which fulfill the following criteria: minimum frequency of 3 calls per week and calling at a maximum of 3 different ports.

General cargo:

Including containerized cargo, non-containerized cargo, Ro-Ro and automobiles.

Containerized cargo:

Excluding container cargo by Ro-Ro.

Non-containerized cargo:

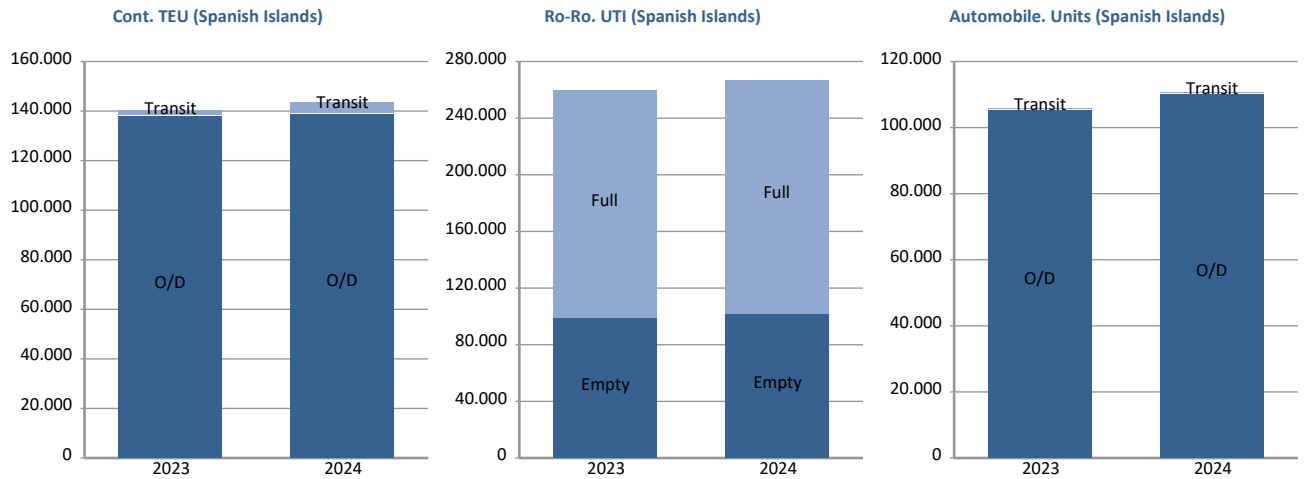
General non-containerized goods other than Ro-Ro and excluding automobiles.

Ro-Ro:

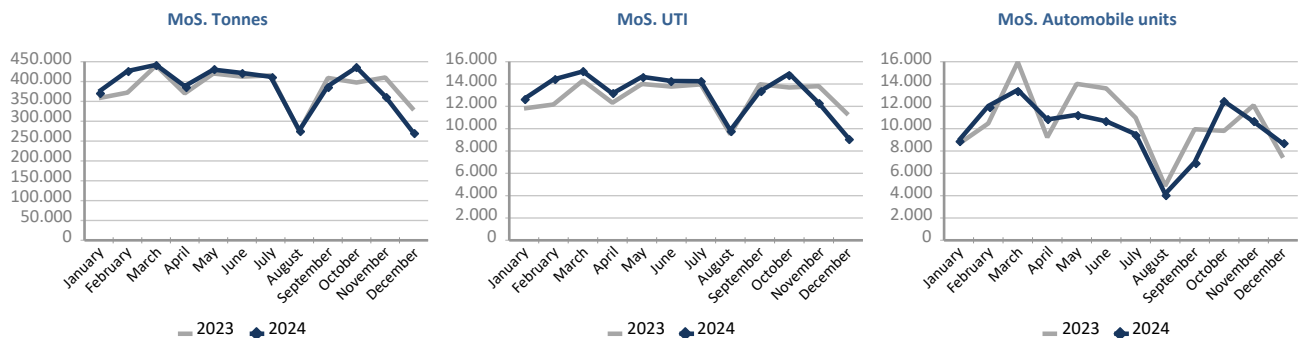
General cargo carried in UTI's. Excluding automobiles.

SHORT SEA SHIPPING (SSS)

SSS General cargo	Spanish Islands			SSS Remainder			TOTAL		
	2023	2024	%	2023	2024	%	2023	2024	%
Containerized cargo. TEU	140.602	143.682	2,2%	832.368	1.166.205	40,1%	972.970	1.309.887	34,6%
O/D	138.141	139.079	0,7%	399.909	448.661	12,2%	538.050	587.740	9,2%
Full	86.223	90.343	4,8%	234.955	259.042	10,3%	321.178	349.385	8,8%
Empty	51.918	48.736	-6,1%	164.955	189.620	15,0%	216.872	238.355	9,9%
Transit	2.461	4.603	87,0%	432.459	717.544	65,9%	434.920	722.147	66,0%
Full	2.043	3.283	60,7%	389.719	633.282	62,5%	391.762	636.565	62,5%
Empty	418	1.320	215,8%	42.740	84.262	97,2%	43.158	85.582	98,3%
Ro-Ro. UTI	259.194	267.108	3,1%	156.643	160.626	2,5%	415.837	427.734	2,9%
Full	160.845	166.119	3,3%	141.097	143.422	1,6%	301.942	309.541	2,5%
Empty	98.349	100.989	2,7%	15.546	17.204	10,7%	113.895	118.193	3,8%
Automobile units	105.456	110.229	4,5%	479.106	434.320	-9,3%	584.562	544.549	-6,8%
O/D	105.159	110.190	4,8%	395.815	365.649	-7,6%	500.974	475.839	-5,0%
Transit	297	39	-86,9%	83.291	68.671	-17,6%	83.588	68.710	-17,8%



Motorways of the Sea (MoS)	2023	EU		Non-EU			TOTAL		
		2024	%	2023	2024	%	2023	2024	%
Tonnes	4.590.765	4.618.793	0,6%	17.925	9.471	-47,2%	4.608.690	4.628.265	0,4%
Loaded	2.448.354	2.477.445	1,2%	12.665	7.737	-38,9%	2.461.020	2.485.182	1,0%
Unloaded	2.142.411	2.141.349	-0,0%	5.260	1.734	-67,0%	2.147.671	2.143.083	-0,2%
UTI	153.737	157.689	2,6%	838	408	-51,3%	154.575	158.097	2,3%
Loaded	78.312	80.828	3,2%	592	314	-47,0%	78.904	81.142	2,8%
Unloaded	75.425	76.861	1,9%	246	94	-61,8%	75.671	76.955	1,7%
Automobile units	125.523	118.161	-5,9%	1.501	1.410	-6,1%	127.024	119.571	-5,9%
Loaded	117.972	112.026	-5,0%	1.496	1.404	-6,1%	119.468	113.430	-5,1%
Unloaded	7.551	6.135	-18,8%	5	6	20,0%	7.556	6.141	-18,7%

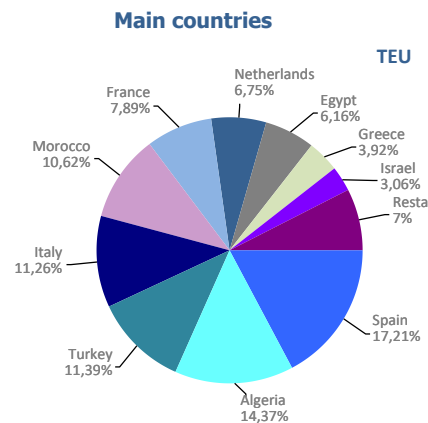


UTI: All those means of unitization, self-propelled or otherwise, that are directly or indirectly used as a means of land transport (e.g. trailers, platforms, trucks, freezer trucks, etc.) are considered as UTI. Containers are not considered to be included, except those that are handled by an equipment transport of the own terminal.

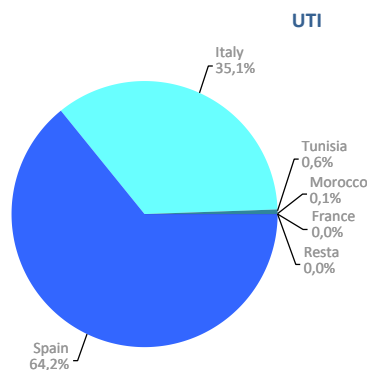
SHORT SEA SHIPPING (SSS)

SSS Ranking countries by mode of packaging

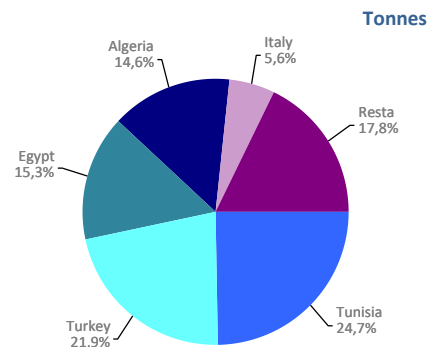
Containerized cargo. TEU	Monthly accumulated				% of total 2024
	2023	2024	Diff. 24-23	%	
Total	972.970	1.309.887	336.917	34,6%	100%
Spain	203.404	225.374	21.970	10,8%	17,2%
Algeria	197.049	188.226	-8.823	-4,5%	14,4%
Turkey	125.542	149.222	23.680	18,9%	11,4%
Italy	72.088	147.485	75.397	104,6%	11,3%
Morocco	116.236	139.172	22.936	19,7%	10,6%
France	61.626	103.381	41.755	67,8%	7,9%
Netherlands	1.602	88.392	86.790	5417,6%	6,7%
Egypt	66.153	80.667	14.514	21,9%	6,2%
Greece	30.467	51.382	20.915	68,6%	3,9%
Israel	25.838	40.108	14.270	55,2%	3,1%
Remainder	72.967	96.482	23.515	32,2%	7,4%



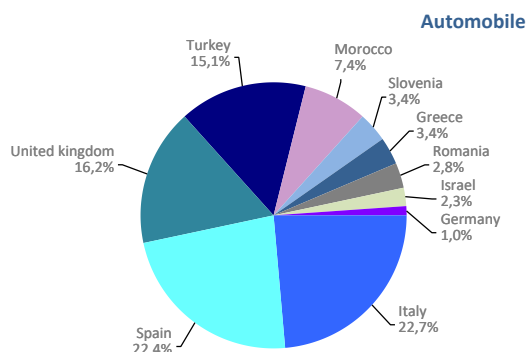
Ro-Ro. UTI	Monthly accumulated				% of total 2024
	2023	2024	Diff. 24-23	%	
Total	415.837	427.734	11.898	2,9%	100%
Spain	265.040	274.779	9.739	3,7%	64,2%
Italy	147.836	149.981	2.145	1,5%	35,1%
Tunisia	1.972	2.535	564	28,6%	0,6%
Morocco	940	422	-518	-55,1%	0,1%
France	34	13	-21	-61,8%	0,0%
Remainder	15	4	-11	-73,3%	0,0%



Non-cont. cargo. Tonnes	Monthly accumulated				% of total 2024
	2023	2024	Diff. 24-23	%	
Total	206.665	140.276	-66.389	-32,1%	100%
Tunisia	17.140	34.689	17.549	102,4%	24,7%
Turkey	19.667	30.784	11.118	56,5%	21,9%
Egypt	79.621	21.479	-58.142	-73,0%	15,3%
Algeria	19.410	20.472	1.063	5,5%	14,6%
Italy	52.337	7.815	-44.522	-85,1%	5,6%
Remainder	18.491	25.036	6.546	35,4%	17,8%



Automobile. Units	Monthly accumulated				% of total 2024
	2023	2024	Diff. 24-23	%	
Total	584.562	544.549	-40.013	-6,8%	100%
Italy	136.217	123.577	-12.640	-9,3%	22,7%
Spain	118.857	121.707	2.850	2,4%	22,4%
United kingdom	92.332	88.345	-3.987	-4,3%	16,2%
Turkey	70.812	81.964	11.152	15,7%	15,1%
Morocco	40.347	40.493	146	0,4%	7,4%
Slovenia	6.999	18.457	11.458	163,7%	3,4%
Greece	20.557	18.287	-2.270	-11,0%	3,4%
Romania	18.348	15.049	-3.299	-18,0%	2,8%
Israel	13.621	12.527	-1.094	-8,0%	2,3%
Germany	4.076	5.542	1.466	36,0%	1,0%
Remainder	62.396	18.601	-43.795	-70,2%	3,4%



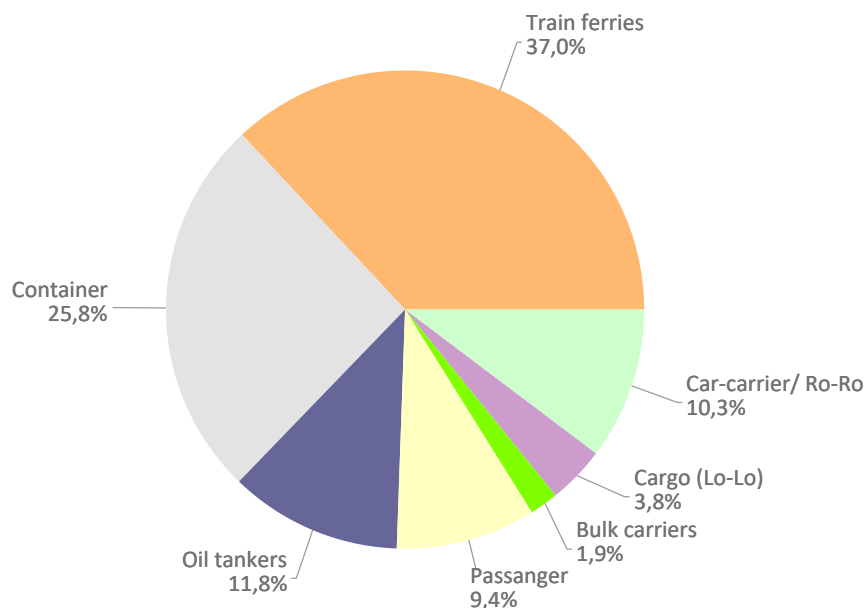
VESSELS TRAFFIC

Vessels traffic	Monthly accumulated		
	2023	2024	%
Number of calls	8.766	8.383	-4,4%
Tonnage	374.300.885	364.239.329	-2,7%
Average tonnes	42.699	43.450	1,8%

Type of vessels	Monthly accumulated					
	2023		2024		%	
	Calls	GT	Calls	GT	Calls	GT
Total	8.766	374.300.885	8.383	364.239.329	-4,4%	-2,7%
Car-carrier/ Ro-Ro	916	48.410.153	866	45.174.629	-5,5%	-6,7%
Cargo (Lo-Lo)	352	2.169.020	317	2.877.048	-9,9%	32,6%
Bulk carriers	149	4.249.109	157	4.569.998	5,4%	7,6%
Passanger	804	99.252.922	791	96.249.986	-1,6%	-3,0%
Oil tankers	970	19.055.263	988	17.798.463	1,9%	-6,6%
Container	2.241	102.388.498	2.163	106.510.533	-3,5%	4,0%
Train ferries	3.334	98.775.920	3.101	91.058.672	-7,0%	-7,8%

Type of vessels (monthly accumulated 2024)	Domestic		Foreign	
	Calls	GT	Calls	GT
Total	3.126	77.644.129	5.257	286.595.200
Car-carrier/ Ro-Ro	59	1.215.740	807	43.958.889
Cargo (Lo-Lo)	31	164.631	286	2.712.417
Bulk carriers	12	190.578	145	4.379.420
Passanger	126	9.538.264	665	86.711.722
Oil tankers	101	1.232.106	887	16.566.357
Container	338	4.506.214	1.825	102.004.319
Train ferries	2.459	60.796.596	642	30.262.076

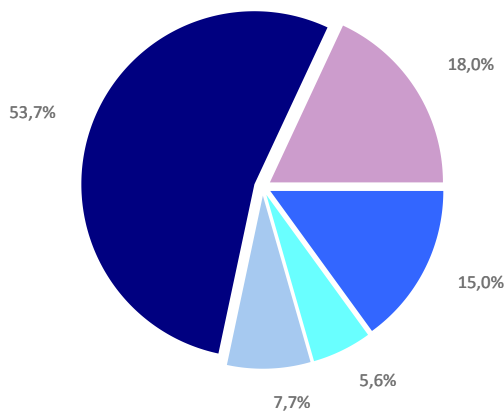
Distribution by type of vessel



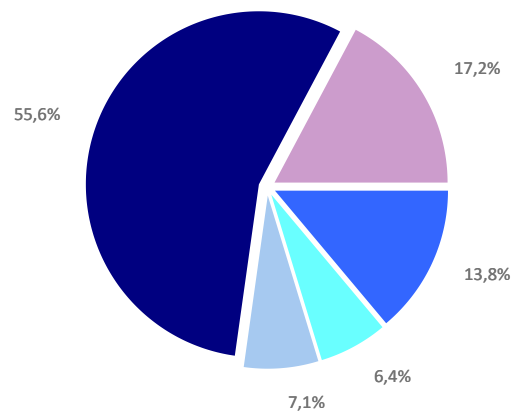
GOODS TRAFFIC

Type of packaging and navigation	Monthly accumulated 2023			Monthly accumulated 2024			%
	Domestic	Foreign	Total	Domestic	Foreign	Total	
Hydrocarbons	744.891	8.633.242	9.378.133	669.368	8.708.178	9.377.546	-0,0%
Incoming	579.066	7.275.169	7.854.235	421.277	6.883.781	7.305.058	-7,0%
Outgoing	165.825	1.358.072	1.523.898	248.091	1.824.397	2.072.488	36,0%
Other liquid bulk	169.493	3.323.952	3.493.445	496.309	3.814.838	4.311.148	23,4%
Incoming	95.830	2.232.446	2.328.276	399.186	2.629.285	3.028.472	30,1%
Outgoing	73.663	1.091.506	1.165.169	97.123	1.185.553	1.282.676	10,1%
Dry bulk	140.545	4.653.274	4.793.819	93.086	4.706.416	4.799.502	0,1%
Incoming	112.147	2.625.543	2.737.690	83.767	2.765.020	2.848.787	4,1%
Outgoing	28.398	2.027.731	2.056.129	9.319	1.941.396	1.950.715	-5,1%
Containerized cargo	1.410.371	32.115.859	33.526.230	1.368.505	36.313.252	37.681.758	12,4%
Incoming	417.926	15.365.531	15.783.457	419.362	17.521.113	17.940.475	11,7%
Outgoing	992.445	16.750.328	17.742.773	949.144	18.792.139	19.741.283	11,3%
Non-containerized cargo	5.563.751	5.672.648	11.236.399	5.913.069	5.747.599	11.660.669	3,8%
Incoming	1.837.019	2.876.883	4.713.902	1.957.308	2.875.079	4.832.387	2,5%
Outgoing	3.726.732	2.795.765	6.522.497	3.955.761	2.872.520	6.828.282	4,7%
Total general cargo	6.974.123	37.788.507	44.762.630	7.281.575	42.060.852	49.342.426	10,2%
Incoming	2.254.945	18.242.414	20.497.359	2.376.670	20.396.192	22.772.862	11,1%
Outgoing	4.719.178	19.546.093	24.265.270	4.904.905	21.664.660	26.569.564	9,5%
Total throughput (tonnes)	8.029.052	54.398.975	62.428.027	8.540.338	59.290.283	67.830.621	8,7%
Incoming	3.041.989	30.375.572	33.417.561	3.280.900	32.674.278	35.955.178	7,6%
Outgoing	4.987.063	24.023.403	29.010.466	5.259.438	26.616.005	31.875.443	9,9%
Container traffic (TEU)	223.471	3.056.776	3.280.247	218.745	3.666.991	3.885.736	18,5%
Incoming	116.459	1.530.841	1.647.300	114.303	1.834.711	1.949.014	18,3%
Outgoing	107.012	1.525.935	1.632.947	104.442	1.832.280	1.936.722	18,6%

Distribution by type of packaging 2023

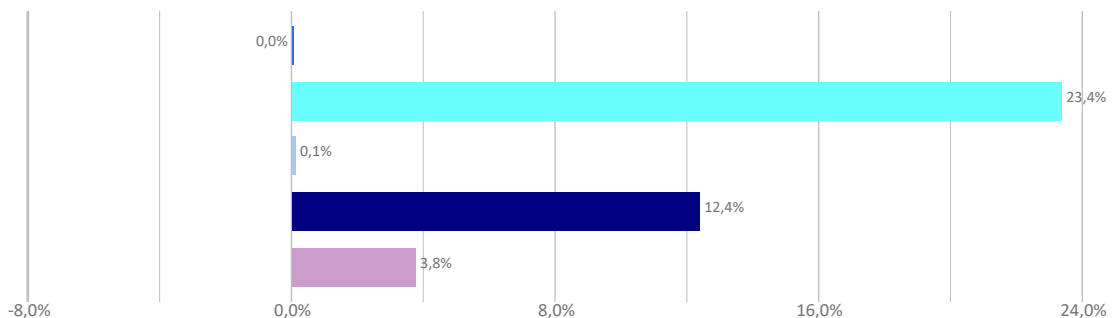


Distribution by type of packaging 2024



Hydrocarbons Liquid bulk Dry bulk Containerized cargo Non Containerized cargo

Annual growth by type of packaging



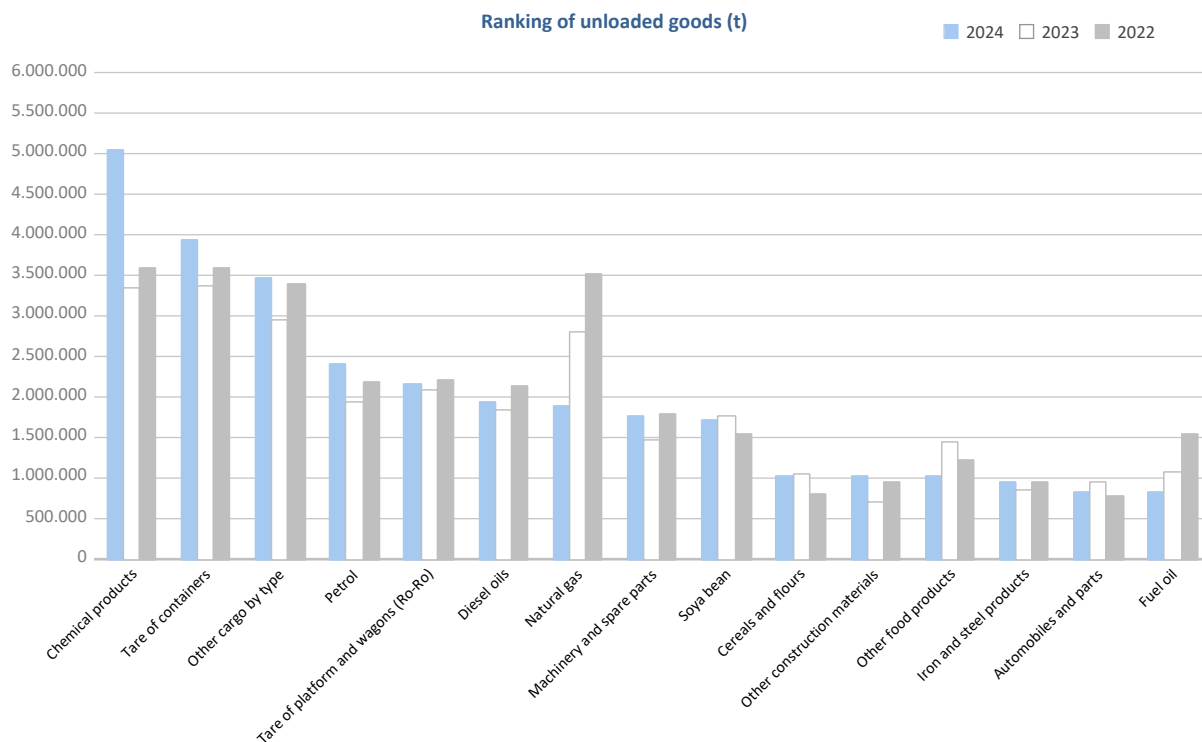
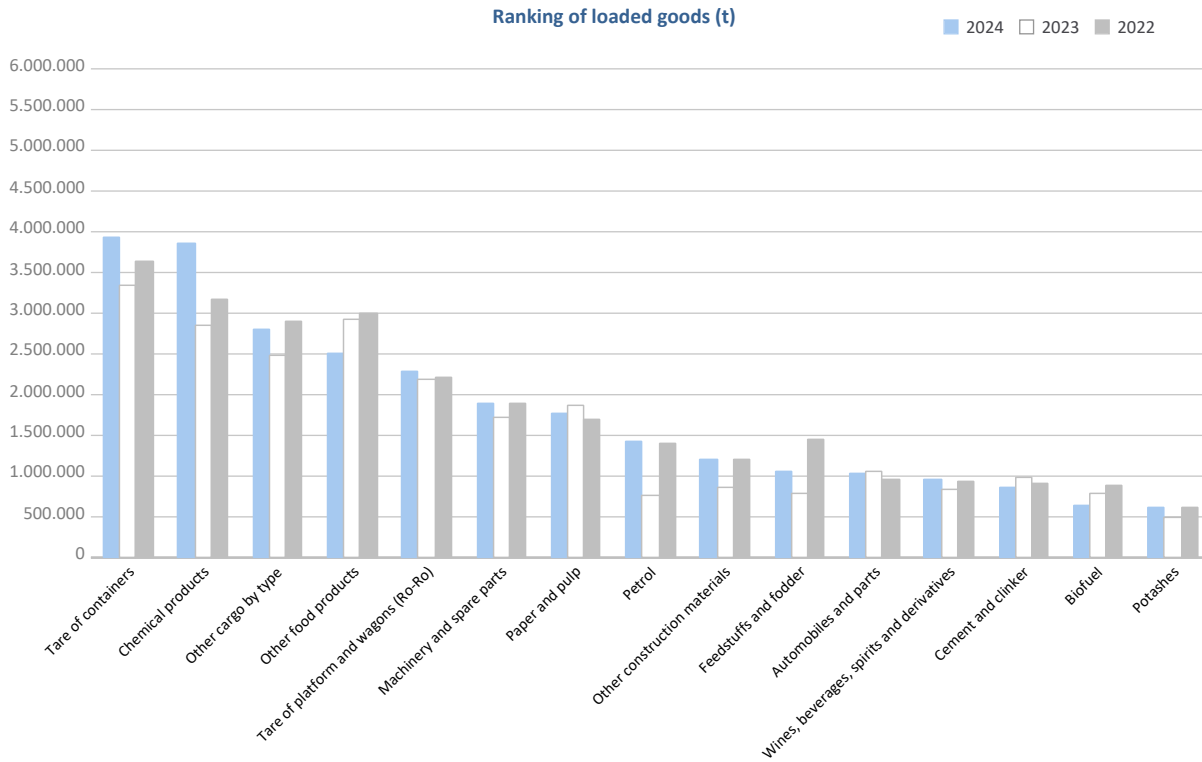
GOODS TRAFFIC

Goods by classification 4.3.7.	Monthly accumulated				% of total accum. 2024
	2023	2024	Diff. 24-23	%	
Tonnes	62.428.027	67.830.621	5.402.594	8,7%	100%
Energy	11.146.205	10.764.019	-382.186	-3,4%	15,9%
Crude oil	34	1.080	1.046	3044,2%	0,0%
Fuel oil	1.212.186	918.280	-293.906	-24,2%	1,4%
Diesel oils	2.209.331	2.380.256	170.924	7,7%	3,5%
Petrol	2.721.716	3.836.170	1.114.454	40,9%	5,7%
Other petroleum products	280.419	314.296	33.878	12,1%	0,5%
Petroleum fuel gasses	57.598	66.781	9.183	15,9%	0,1%
Coal	74.297	56.185	-18.111	-24,4%	0,1%
Natural gas	3.041.661	2.023.868	-1.017.794	-33,5%	3,0%
Biofuel	1.548.962	1.167.103	-381.859	-24,7%	1,7%
Iron, steel and metallurgical products	2.780.665	2.881.897	101.233	3,6%	4,2%
Iron ore	4.230	10.295	6.064	143,4%	0,0%
Other minerals and metallic waste	399.341	594.455	195.114	48,9%	0,9%
Scrap iron	601.858	401.333	-200.526	-33,3%	0,6%
Iron and steel products	1.293.278	1.381.370	88.092	6,8%	2,0%
Other metallurgical products	481.957	494.445	12.488	2,6%	0,7%
Non-metallic minerals	1.036.724	1.103.100	66.376	6,4%	1,6%
Common salt	603.243	590.926	-12.317	-2,0%	0,9%
Other non-metallic minerals	433.481	512.174	78.693	18,2%	0,8%
Fertilizers	707.232	886.131	178.899	25,3%	1,3%
Phosphates	331	225	-106	-32,0%	0,0%
Potashes	503.958	623.450	119.492	23,7%	0,9%
Natural/artificial fertilizer	202.943	262.456	59.513	29,3%	0,4%
Chemicals	6.198.416	8.904.603	2.706.186	43,7%	13,1%
Chemical products	6.198.416	8.904.603	2.706.186	43,7%	13,1%
Construction materials	2.619.632	3.155.231	535.599	20,4%	4,7%
Asphalt	10.477	11.061	585	5,6%	0,0%
Cement and clinker	1.022.033	915.906	-106.127	-10,4%	1,4%
Other construction materials	1.587.123	2.228.264	641.141	40,4%	3,3%
Agriculture, livestock and food	13.147.115	12.950.205	-196.910	-1,5%	19,1%
Cereals and flours	1.198.325	1.263.132	64.808	5,4%	1,9%
Soya bean	2.011.695	1.791.121	-220.574	-11,0%	2,6%
Fruits, vegetables, pulses	548.652	571.287	22.634	4,1%	0,8%
Wines, beverages, spirits and derivatives	973.412	1.220.014	246.602	25,3%	1,8%
Canned goods	343.347	329.002	-14.345	-4,2%	0,5%
Tobacco, coffee, cocoa	805.863	1.001.770	195.908	24,3%	1,5%
Oils and fats	1.267.674	1.296.341	28.668	2,3%	1,9%
Other food products	4.363.822	3.531.907	-831.915	-19,1%	5,2%
Frozen fish	678.503	639.927	-38.576	-5,7%	0,9%
Feedstuffs and fodder	955.823	1.305.703	349.880	36,6%	1,9%
Other cargo	11.774.445	13.008.792	1.234.347	10,5%	19,2%
Timber	433.689	498.327	64.638	14,9%	0,7%
Paper and pulp	2.679.719	2.559.973	-119.747	-4,5%	3,8%
Machinery and spare parts	3.211.337	3.665.863	454.526	14,2%	5,4%
Other cargo by type	5.449.700	6.284.630	834.930	15,3%	9,3%
Vehicles and transport parts	13.017.592	14.176.642	1.159.050	8,9%	20,9%
Automobiles and parts	2.011.869	1.874.647	-137.222	-6,8%	2,8%
Tare of platform and wagons (Ro-Ro)	4.299.165	4.438.519	139.354	3,2%	6,5%
Tare of containers	6.706.557	7.863.476	1.156.919	17,3%	11,6%

GOODS TRAFFIC

Goods by classification 4.3.7.

Ranking of goods (tonnes)

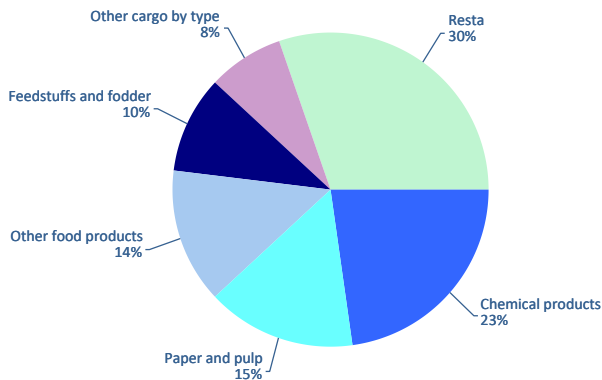


GOODS TRAFFIC

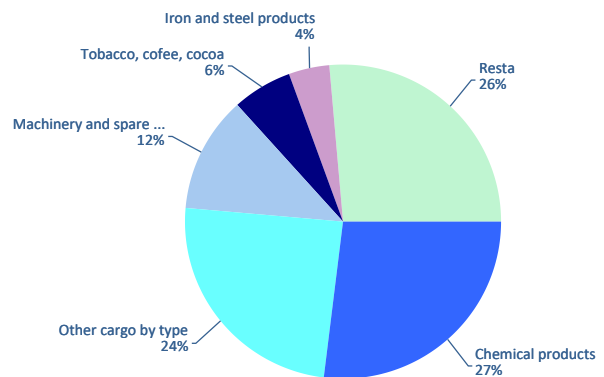
Containerized goods by classification 4.3.7. (Tares & transits not included)

Containerized goods classification	Loaded			Unloaded			Total monthly accumulated		
	2023	2024	%	2023	2024	%	2023	2024	%
Total tonnes (tares & transits not included)	7.888.753	8.343.069	5,8%	5.805.664	6.387.907	10,0%	13.694.417	14.730.976	7,6%
Chemical products	1.570.134	1.897.230	20,8%	1.507.071	1.723.203	14,3%	3.077.205	3.620.434	17,7%
Other cargo by type	647.009	670.095	3,6%	1.357.734	1.550.709	14,2%	2.004.742	2.220.804	10,8%
Paper and pulp	1.333.084	1.268.804	-4,8%	173.037	235.816	36,3%	1.506.121	1.504.620	-0,1%
Other food products	1.195.852	1.169.880	-2,2%	104.076	61.830	-40,6%	1.299.928	1.231.710	-5,2%
Machinery and spare parts	464.120	446.848	-3,7%	740.322	771.714	4,2%	1.204.441	1.218.562	1,2%
Feedstuffs and fodder	645.889	821.735	27,2%	56.131	105.406	87,8%	702.019	927.141	32,1%
Other construction materials	263.420	304.492	15,6%	221.345	234.228	5,8%	484.765	538.720	11,1%
Tobacco, cofee, cocoa	80.129	83.162	3,8%	328.946	392.973	19,5%	409.075	476.135	16,4%
Wines, beverages, spirits and derivatives	419.099	418.362	-0,2%	37.821	46.125	22,0%	456.921	464.486	1,7%
Iron and steel products	170.745	162.713	-4,7%	264.700	270.727	2,3%	435.445	433.440	-0,5%
Automobiles and parts	133.594	127.439	-4,6%	210.379	264.273	25,6%	343.973	391.713	13,9%
Other minerals and metallic waste	182.814	213.348	16,7%	28.173	30.133	7,0%	210.987	243.481	15,4%
Other metallurgical products	90.111	85.148	-5,5%	157.178	147.082	-6,4%	247.289	232.230	-6,1%
Other non-metallic minerals	111.968	92.565	-17,3%	89.199	86.362	-3,2%	201.167	178.927	-11,1%
Oils and fats	137.364	122.222	-11,0%	42.935	36.637	-14,7%	180.300	158.859	-11,9%
Canned goods	71.437	66.924	-6,3%	106.235	90.372	-14,9%	177.671	157.296	-11,5%
Fruits, vegetables, pulses	39.258	40.275	2,6%	136.553	112.427	-17,7%	175.811	152.702	-13,1%
Biofuel	99.422	108.128	8,8%	26.447	31.379	18,7%	125.869	139.507	10,8%
Cereals and flours	56.747	51.200	-9,8%	32.337	30.702	-5,1%	89.083	81.902	-8,1%
Natural/artificial fertilizer	42.966	48.732	13,4%	52.436	20.012	-61,8%	95.402	68.744	-27,9%
Scrap iron	26.495	27.423	3,5%	22.596	27.834	23,2%	49.091	55.258	12,6%
Frozen fish	5.777	2.156	-62,7%	37.335	46.121	23,5%	43.112	48.276	12,0%
Timber	12.082	12.971	7,4%	22.169	25.380	14,5%	34.251	38.350	12,0%
Other petroleum products	20.139	22.651	12,5%	14.213	12.978	-8,7%	34.352	35.629	3,7%
Common salt	31.254	30.927	-1,0%	2.252	2.517	11,8%	33.506	33.444	-0,2%
Coal	1.792	1.911	6,7%	23.153	18.328	-20,8%	24.945	20.240	-18,9%
Petroleum fuel gasses	7.484	16.440	119,7%	930	440	-52,7%	8.414	16.880	100,6%
Fuel oil	7.958	8.803	10,6%	6.862	6.474	-5,7%	14.820	15.277	3,1%
Cement and clinker	13.253	12.448	-6,1%	77	28	-63,3%	13.331	12.477	-6,4%
Asphalt	6.282	7.276	15,8%	16	35	117,3%	6.298	7.312	16,1%
Soya bean	3	7	133,9%	1.016	3.494	243,9%	1.019	3.501	243,6%
Potashes	215	280	30,0%	1.567	1.858	18,6%	1.783	2.138	19,9%
Crude oil	12	28	125,1%	22	192	772,4%	34	220	539,6%
Phosphates	107	111	4,2%	1	69	13231,7%	107	180	67,8%
Diesel oils	606	179	-70,5%	11	0	-71,0%	617	179	-71,0%
Iron ore	95	101	5,6%	373	4	-98,9%	468	105	-77,6%
Petrol	36	54	51,4%	16	42	164,0%	52	96	86,4%
Natural gas	2	0		0	0		2	0	

Distribution of main goods Loaded 2024



Distribution of main goods Unloaded 2024

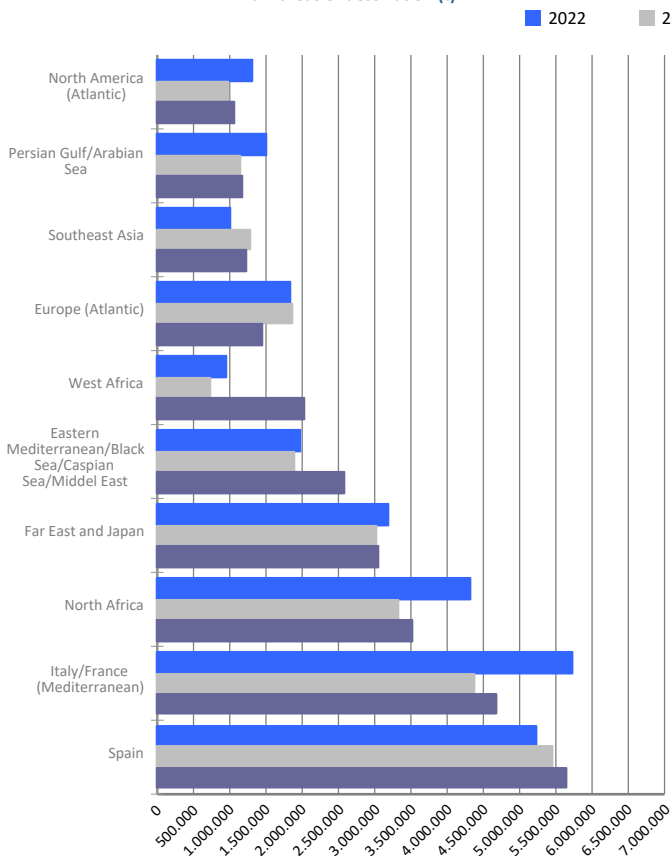


MARITIME TRAFFIC BY ORIGIN/DESTINATION

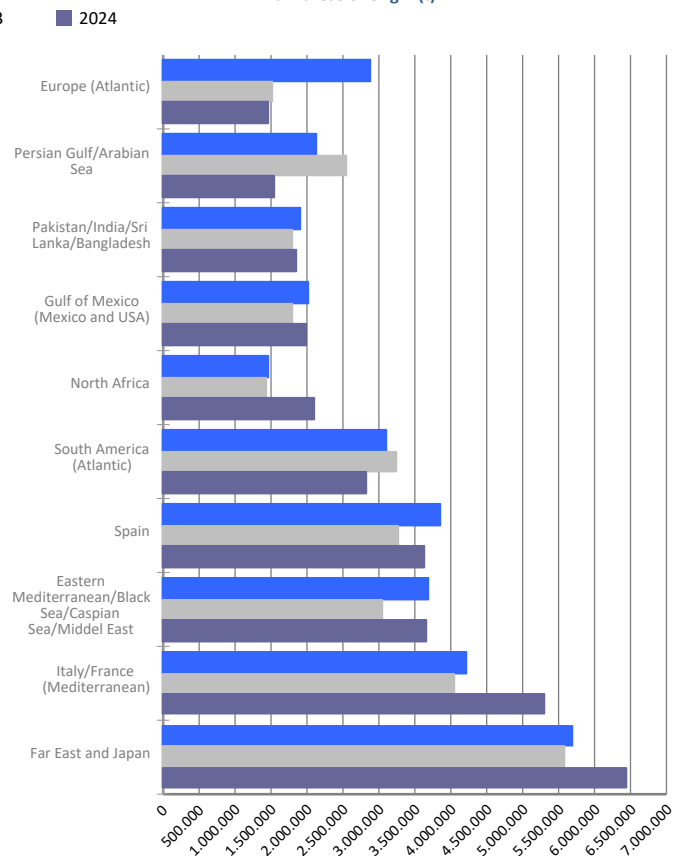
Geographical areas. Tonnes

Geographical areas	Monthly accumulated				% of total accum. 2024
	2023	2024	Diff. 24-23	%	
Tonnes	62.428.027	67.830.621	5.402.594	8,7%	100%
Italy/France (Mediterranean)	8.428.962	9.968.652	1.539.690	18,3%	14,7%
Far East and Japan	8.614.679	9.520.592	905.913	10,5%	14,0%
Spain	8.732.947	9.280.099	547.152	6,3%	13,7%
Eastern Mediterranean/Black Sea/Caspian Sea/Middel	4.949.559	6.246.520	1.296.962	26,2%	9,2%
North Africa	4.750.113	5.617.728	867.616	18,3%	8,3%
South America (Atlantic)	3.745.885	3.482.010	-263.875	-7,0%	5,1%
Europe (Atlantic)	3.373.031	2.909.939	-463.092	-13,7%	4,3%
Gulf of Mexico (Mexico and USA)	2.631.103	2.858.894	227.791	8,7%	4,2%
Pakistan/India/Sri Lanka/Bangladesh	2.681.506	2.773.009	91.502	3,4%	4,1%
Persian Gulf/Arabian Sea	3.685.235	2.737.707	-947.529	-25,7%	4,0%
Southeast Asia	2.524.429	2.691.112	166.683	6,6%	4,0%
West Africa	1.459.097	2.650.883	1.191.786	81,7%	3,9%
North America (Atlantic)	1.436.842	1.668.106	231.264	16,1%	2,5%
Red Sea	989.686	1.560.424	570.738	57,7%	2,3%
Central America and Caribbean	1.159.204	1.100.832	-58.372	-5,0%	1,6%
Unknown area (Tare of empty containers)	580.072	711.125	131.053	22,6%	1,0%
South America (Pacific)	570.415	591.838	21.423	3,8%	0,9%
South-Eastern Africa/Indian Ocean	511.284	573.014	61.730	12,1%	0,8%
Canada (Atlantic) and Great Lakes	1.257.140	432.370	-824.770	-65,6%	0,6%
Australia, New Zealand/Pacific Islands	217.266	247.180	29.914	13,8%	0,4%
North America (Pacific)	129.570	208.586	79.016	61,0%	0,3%

Main areas of destination (t)



Main areas of origin (t)

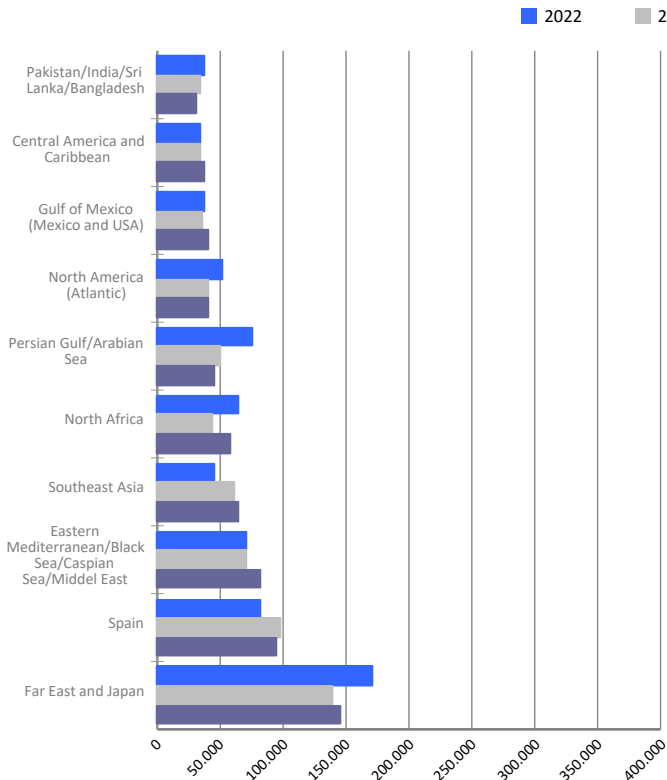


MARITIME TRAFFIC BY ORIGIN/DESTINATION

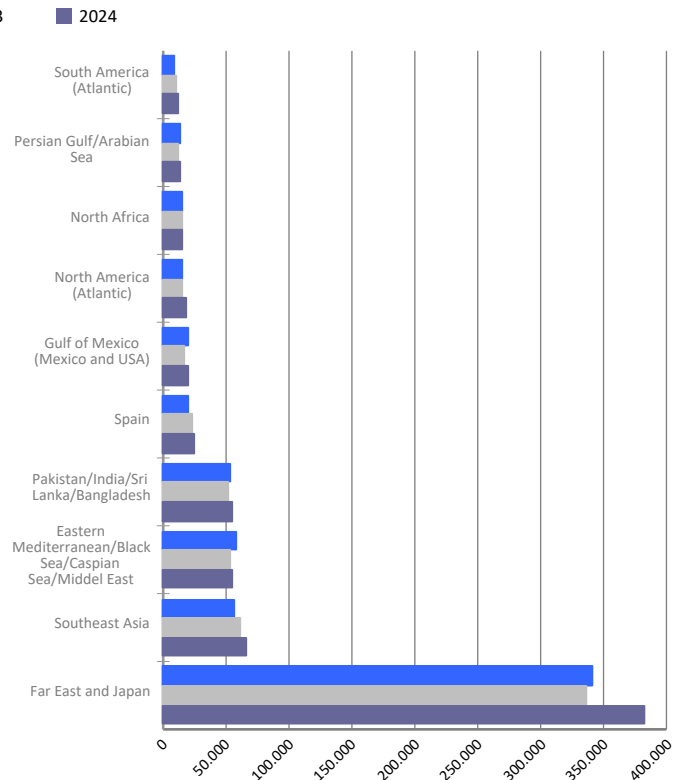
Geographical areas. Full TEU non transit

Geographical areas	Monthly accumulated				% of total accum. 2024
	2023	2024	Diff. 24-23	%	
Full TEU non transit	1.406.902	1.511.937	105.035	7,5%	100%
Far East and Japan	475.703	528.457	52.754	11,1%	35,0%
Eastern Mediterranean/Black Sea/Caspian Sea/Middel	123.670	137.746	14.076	11,4%	9,1%
Southeast Asia	124.003	130.562	6.560	5,3%	8,6%
Spain	121.522	119.634	-1.888	-1,6%	7,9%
Pakistan/India/Sri Lanka/Bangladesh	85.677	85.512	-165	-0,2%	5,7%
North Africa	59.707	73.740	14.034	23,5%	4,9%
Gulf of Mexico (Mexico and USA)	52.610	60.430	7.820	14,9%	4,0%
North America (Atlantic)	55.771	60.190	4.419	7,9%	4,0%
Persian Gulf/Arabian Sea	63.055	59.438	-3.617	-5,7%	3,9%
Central America and Caribbean	41.091	42.901	1.810	4,4%	2,8%
South America (Atlantic)	34.785	38.330	3.546	10,2%	2,5%
South America (Pacific)	31.407	34.825	3.418	10,9%	2,3%
Red Sea	28.724	33.926	5.202	18,1%	2,2%
West Africa	28.538	32.361	3.823	13,4%	2,1%
South-Eastern Africa/Indian Ocean	24.499	25.533	1.034	4,2%	1,7%
Canada (Atlantic) and Great Lakes	13.125	13.473	348	2,7%	0,9%
Australia, New Zealand/Pacific Islands	11.919	12.808	890	7,5%	0,8%
North America (Pacific)	6.996	8.268	1.272	18,2%	0,5%
Italy/France (Mediterranean)	19.657	8.207	-11.450	-58,2%	0,5%
Europe (Atlantic)	4.446	5.598	1.153	25,9%	0,4%

Main areas of destination
Full TEU non transit



Main areas of origin
Full TEU non transit

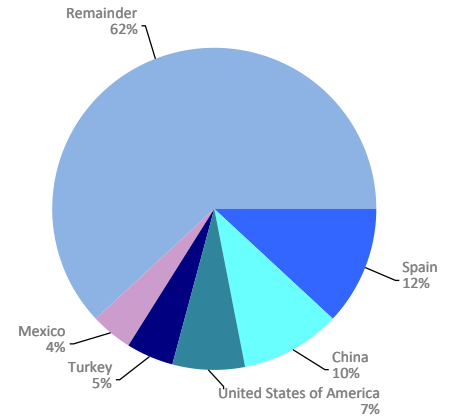


MARITIME TRAFFIC BY ORIGIN/DESTINATION

Ranking countries. Full TEU non transit

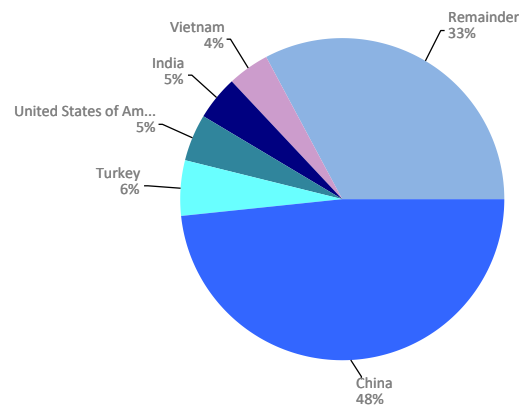
Loaded	Full TEU	% 24-23	% a/packaging
Spain	94.296	-3,6%	11,9%
China	80.424	3,2%	10,1%
United States of America	57.126	8,2%	7,2%
Turkey	37.416	20,1%	4,7%
Mexico	33.956	13,9%	4,3%
Morocco	30.813	38,9%	3,9%
Saudi Arabia	27.376	1,6%	3,4%
United Arab Emirates	25.454	-10,3%	3,2%
Japan	23.996	-1,3%	3,0%
India	23.637	-15,1%	3,0%
Korea (South)	18.752	12,8%	2,4%
Malaysia	18.536	5,7%	2,3%
Vietnam	17.047	15,6%	2,1%
Israel	17.020	14,5%	2,1%
Egypt	15.653	21,6%	2,0%
Remainder	272.939	3,5%	34,4%
TOTAL	794.440	4,6%	100%

Main countries. Loaded



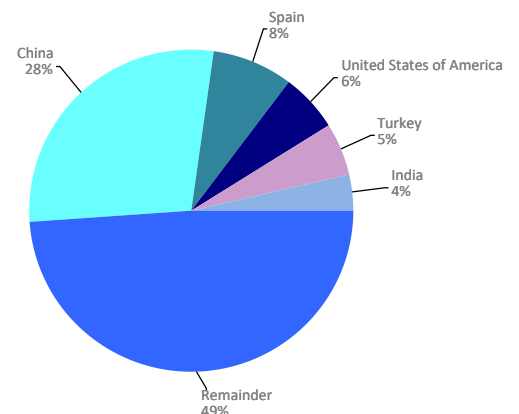
Unloaded	Full TEU	% 24-23	% a/packaging
China	346.743	16,6%	48,3%
Turkey	39.561	4,6%	5,5%
United States of America	34.167	16,5%	4,8%
India	32.585	9,5%	4,5%
Vietnam	28.732	7,4%	4,0%
Spain	25.339	6,7%	3,5%
Korea (South)	21.131	-7,8%	2,9%
Saudi Arabia	14.570	34,5%	2,0%
Bangladesh	12.621	-3,6%	1,8%
Egypt	12.242	4,1%	1,7%
Thailand	10.140	30,6%	1,4%
Brazil	9.574	31,5%	1,3%
Indonesia	9.563	14,9%	1,3%
Cambodia	9.415	31,6%	1,3%
Greece	9.079	2,1%	1,3%
Remainder	102.038	-2,4%	14,2%
TOTAL	717.497	10,8%	100%

Main countries. Unloaded



Total	Full TEU	% 24-23	% a/packaging
China	427.167	13,8%	28,3%
Spain	119.634	-1,6%	7,9%
United States of America	91.293	11,2%	6,0%
Turkey	76.977	11,6%	5,1%
India	56.222	-2,4%	3,7%
Vietnam	45.779	10,3%	3,0%
Saudi Arabia	41.946	11,0%	2,8%
Mexico	40.540	11,6%	2,7%
Korea (South)	39.883	0,9%	2,6%
Morocco	33.332	35,2%	2,2%
Japan	30.233	-4,2%	2,0%
United Arab Emirates	28.962	-8,6%	1,9%
Egypt	27.895	13,3%	1,8%
Brazil	24.675	18,9%	1,6%
Greece	23.452	11,0%	1,6%
Remainder	403.950	3,1%	26,7%
TOTAL	1.511.937	7,5%	100%

Main countries. Total



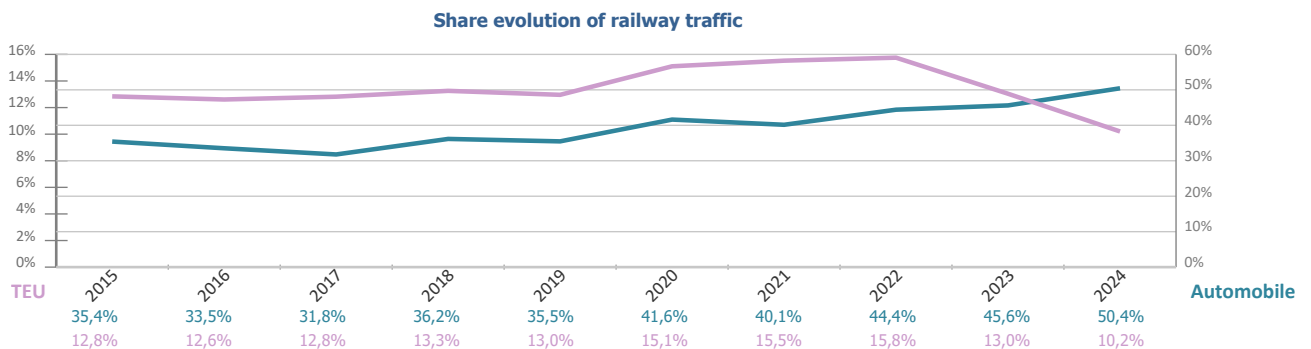
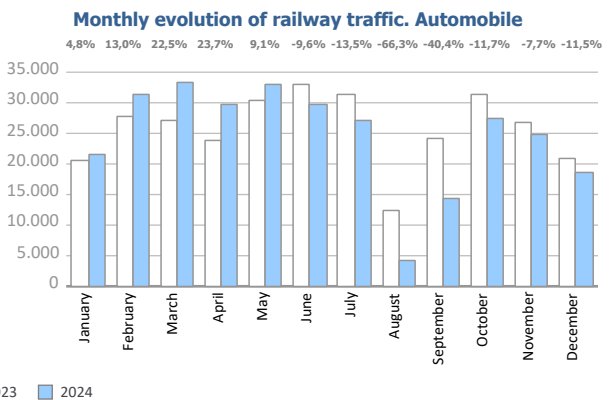
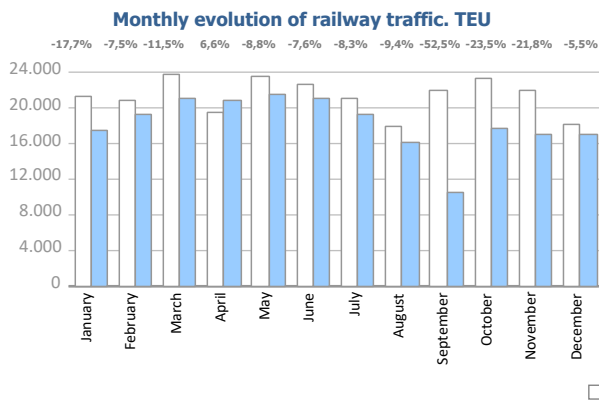
RAILWAY TRAFFIC

Monthly evolution of railway traffic. TEU

Monthly evolution of railway traffic	TEU 2023			TEU 2024			%		% of total port traffic 2024
	Loaded	Unloaded	Total	Loaded	Unloaded	Total	Monthly	Accumulated	
January	10.946	10.351	21.297	7.901	9.633	17.534	-17,7%	-17,7%	11,4%
February	10.012	10.850	20.862	8.751	10.545	19.296	-7,5%	-12,6%	12,2%
March	11.720	12.120	23.840	9.664	11.438	21.102	-11,5%	-12,2%	11,1%
April	9.632	9.846	19.478	10.070	10.684	20.754	6,6%	-7,9%	12,4%
May	12.232	11.299	23.531	10.133	11.320	21.453	-8,8%	-8,1%	11,2%
June	11.297	11.397	22.694	10.637	10.334	20.971	-7,6%	-8,0%	11,9%
July	10.049	10.979	21.028	9.288	9.992	19.280	-8,3%	-8,1%	10,5%
August	8.856	9.030	17.886	7.503	8.699	16.202	-9,4%	-8,2%	8,1%
September	10.815	11.129	21.944	5.460	4.964	10.424	-52,5%	-13,3%	5,8%
October	11.031	12.246	23.277	8.560	9.245	17.805	-23,5%	-14,4%	9,5%
November	10.067	11.795	21.862	8.118	8.979	17.097	-21,8%	-15,1%	9,5%
December	8.192	9.931	18.122	8.208	8.913	17.121	-5,5%	-14,4%	9,5%
Total	124.847	130.971	255.818	104.293	114.746	219.039			10,2%

Monthly evolution of railway traffic. Automobile

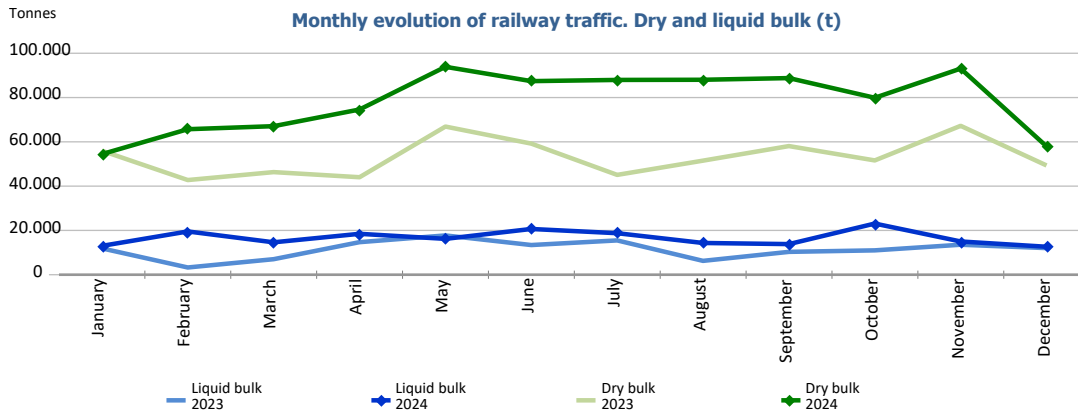
Monthly evolution of railway traffic	Automobile 2023			Automobile 2024			%		% of total port traffic 2024
	Loaded	Unloaded	Total	Loaded	Unloaded	Total	Monthly	Accumulated	
January	4.150	16.267	20.417	2.696	18.708	21.404	4,8%	4,8%	52,4%
February	5.096	22.553	27.649	4.150	27.099	31.249	13,0%	9,5%	61,5%
March	3.567	23.677	27.244	4.458	28.926	33.384	22,5%	14,2%	51,9%
April	4.515	19.415	23.930	3.573	26.030	29.603	23,7%	16,5%	55,4%
May	5.929	24.358	30.287	4.399	28.658	33.057	9,1%	14,8%	51,0%
June	5.878	27.021	32.899	4.552	25.180	29.732	-9,6%	9,9%	51,4%
July	6.807	24.450	31.257	5.752	21.286	27.038	-13,5%	6,1%	63,1%
August	1.982	10.394	12.376	799	3.375	4.174	-66,3%	1,7%	19,8%
September	5.584	18.633	24.217	1.963	12.459	14.422	-40,4%	-2,7%	40,9%
October	6.117	25.138	31.255	3.699	23.902	27.601	-11,7%	-3,8%	54,6%
November	5.350	21.525	26.875	4.076	20.732	24.808	-7,7%	-4,1%	43,2%
December	3.150	17.854	21.004	2.778	15.809	18.587	-11,5%	-4,6%	40,5%
Total	58.125	251.285	309.410	42.895	252.164	295.059			50,4%



RAILWAY TRAFFIC

Monthly evolution of railway traffic. Dry and liquid bulk. Tonnes

Monthly evolution of railway traffic	Tonnes 2023			Tonnes 2024			%	
	Dry bulk	Liquid bulk	Total	Dry bulk	Liquid bulk	Total	Monthly	Accumulated
January	55.964	11.888	67.852	54.457	13.024	67.481	-0,5%	-0,5%
February	42.746	3.263	46.009	65.710	19.534	85.244	85,3%	34,1%
March	46.334	7.014	53.348	67.073	14.630	81.703	53,2%	40,2%
April	44.027	14.701	58.728	74.604	18.473	93.077	58,5%	45,0%
May	66.894	17.738	84.632	93.873	16.191	110.064	30,1%	40,9%
June	59.200	13.398	72.598	87.416	20.649	108.065	48,9%	42,4%
July	45.081	15.485	60.566	87.962	18.748	106.710	76,2%	47,0%
August	51.511	6.251	57.762	88.033	14.326	102.359	77,2%	50,5%
September	58.090	10.320	68.410	88.794	13.828	102.622	50,0%	50,4%
October	51.617	10.995	62.612	79.898	23.100	102.998	64,5%	51,8%
November	67.236	13.547	80.783	93.076	15.008	108.084	33,8%	49,8%
December	49.345	12.016	61.361	57.967	12.619	70.586	15,0%	47,0%
Total	638.045	136.616	774.661	938.863	200.130	1.138.993		



Railway traffic.

Railway gauge traffic (u)	Monthly accumulated		%	% of accumulated total 2024
	2023	2024		
Iberian gauge	7.014	6.482	-7,6%	59,0%
UIC	555	918	65,4%	8,4%
FGC	2.868	3.594	25,3%	32,7%
Total	10.437	10.994	5,3%	100%

