

Port of Barcelona traffic statistics

Accumulated data June 2024

Statistics Service

Index

Traffic indicators

Total traffic	3
Main indicators	4
Breakdown of total traffic	5
Breakdown of traffic in transit	6
Monthly evolution of traffic	7

Container traffic

TEU evolution	8
Container traffic (TEU)	9

Passenger traffic

Passenger traffic	10
Passenger classification	11

Automobile traffic

Automobile traffic	12
--------------------	----

Short Sea Shipping traffic (SSS)

SSS Goods classification	13
SSS General cargo and Motorways of the sea (MoS)	14
SSS Ranking countries	15

Vessel traffic

Vessel traffic	16
----------------	----

Goods traffic

Mode of packaging and navigation	17
Goods by classification 4.3.7.	18
Goods ranking	19
Containerized goods by classification 4.3.7.	20

Maritime traffic by origin/destination

Geographical areas. Tonnes	21
Geographical areas. Full TEU non transit	22
Ranqing countries. Full TEU non transit	23

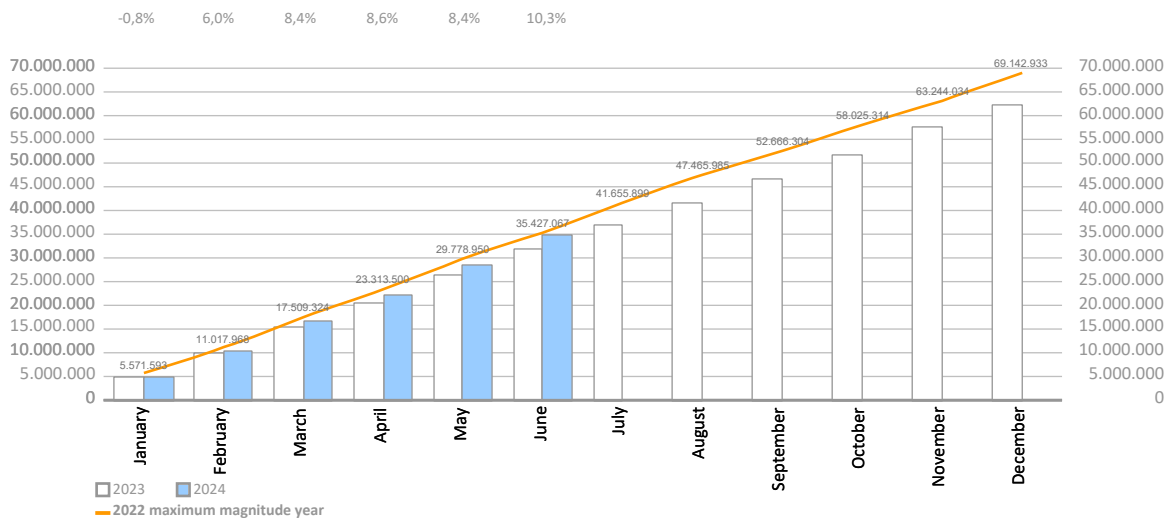
Railway traffic

Evolution of railway traffic (TEU and automobile)	24
Evolution of railway traffic (Solid and liquid bulk)	25
Railway gauge traffic	25

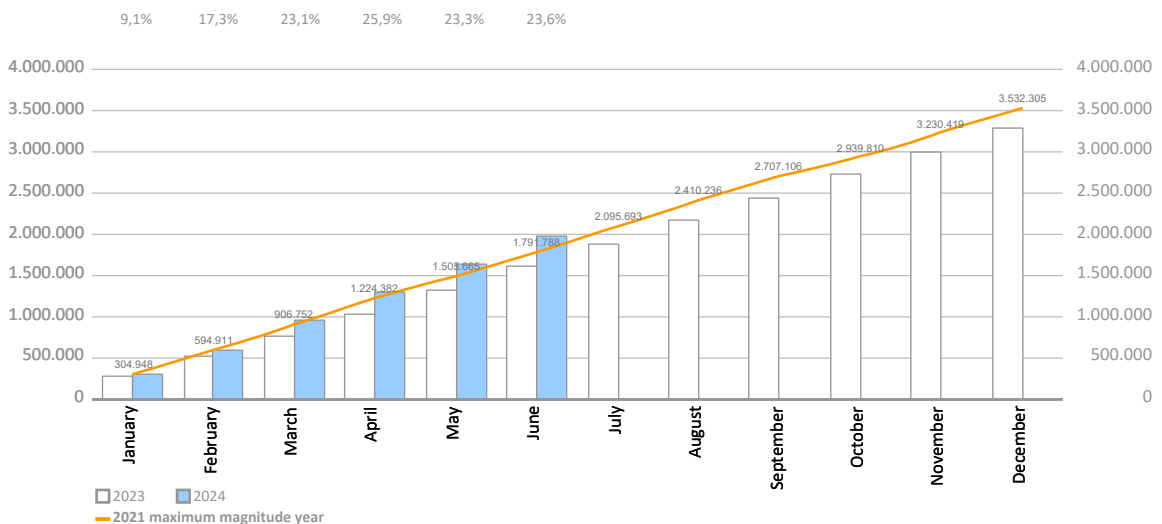
TRAFFIC INDICATORS

Total traffic	Monthly accumulated				% 24-23 accum. May	% 24-23 accum. April	Total traffic 2023
	2023	2024	Diff. 24-23	%			
Total throughput (tonnes)	31.677.909	34.939.165	3.261.256	10,3%	8,4%	8,6%	62.415.542
Supplies	787.964	845.277	57.313	7,3%	0,7%	-2,0%	1.631.498
Fishing	911	1.389	478	52,5%	43,1%	61,9%	1.544
TOTAL TRAFFIC (tonnes)	32.466.784	35.785.831	3.319.047	10,2%	8,2%	8,3%	64.048.583
TEU	1.609.312	1.988.502	379.190	23,6%	23,3%	25,9%	3.280.239
UTI	210.882	217.414	6.533	3,1%	4,1%	5,1%	413.950
Automobiles (units)	410.807	388.291	-22.516	-5,5%	-4,2%	-7,6%	790.318
Vessels (units)	4.219	4.131	-88	-2,1%	-1,7%	-0,9%	8.766
Railway traffic (units)	5.332	5.954	622	11,7%	12,3%	12,0%	10.439
Cruise passengers (units)	1.377.668	1.462.696	85.028	6,2%	4,0%	6,4%	3.569.125
Ferry passengers (units)	642.219	662.339	20.120	3,1%	2,3%	2,5%	1.735.495
Automobile passengers (units)	174.257	185.853	11.596	6,7%	6,6%	5,0%	515.293

Monthly evolution of the accumulated traffic of goods. Tonnes



Monthly evolution of the accumulated traffic of goods. TEU



TRAFFIC INDICATORS

Main indicators	Monthly accumulated				Last 12 months	Total traffic 2023	% 12 months-2023
	2023	2024	Diff. 24-23	%			
Goods indicators by navigation and operation (tonnes)							
Navigation (t)	31.677.909	34.939.165	3.261.256	10,3%	65.676.798	62.415.542	5,2%
Domestic	4.103.662	4.185.870	82.209	2,0%	8.105.859	8.023.650	1,0%
Foreign	27.574.248	30.753.295	3.179.047	11,5%	57.570.939	54.391.892	5,8%
Operation (t)	31.677.909	34.939.165	3.261.256	10,3%	65.676.798	62.415.542	5,2%
Loaded	9.936.052	9.804.786	-131.267	-1,3%	19.031.983	19.163.250	-0,7%
Unloaded	11.646.892	11.097.557	-549.334	-4,7%	22.109.535	22.658.869	-2,4%
Transit	10.094.965	14.036.822	3.941.857	39,0%	24.535.279	20.593.423	19,1%
Goods indicators by main units							
Containers (TEU)	1.609.312	1.988.502	379.190	23,6%	3.659.429	3.280.239	11,6%
TEU O/D	974.629	1.037.014	62.385	6,4%	2.022.749	1.960.364	3,2%
TEU transit	634.683	951.488	316.805	49,9%	1.636.681	1.319.876	24,0%
Containerized tonnes	16.580.035	19.927.277	3.347.242	20,2%	36.873.304	33.526.061	10,0%
Level of containerization	74,29%	76,98%			76,32%	74,92%	
Passengers (u)	2.019.887	2.125.035	105.148	5,2%	5.409.768	5.304.620	2,0%
Regular line	642.219	662.339	20.120	3,1%	1.755.615	1.735.495	1,2%
Pleasure cruises	1.377.668	1.462.696	85.028	6,2%	3.654.153	3.569.125	2,4%
Automobiles (u)	410.807	388.291	-22.516	-5,5%	767.802	790.318	-2,8%
Loaded	220.311	245.793	25.482	11,6%	437.914	412.432	6,2%
Unloaded	132.017	86.573	-45.444	-34,4%	210.138	255.582	-17,8%
Transit	58.479	55.925	-2.554	-4,4%	119.750	122.304	-2,1%
Vessels (u)	4.219	4.131	-88	-2,1%	8.678	8.766	-1,0%
Number of calls	4.219	4.131	-88	-2,1%	8.678	8.766	-1,0%
GT	174.613.776	174.312.269	-301.507	-0,2%	373.999.209	374.300.716	-0,1%
Average tonnes by vessel	7.508	8.458	949	12,6%	7.568	7.120	6,3%
UTI	210.882	217.414	6.533	3,1%	420.482	413.950	1,6%
Domestic	132.265	132.692	427	0,3%	259.928	259.501	0,2%
% Full	62,1%	62,9%			62,3%	61,9%	
Foreign	78.617	84.722	6.106	7,8%	160.554	154.449	4,0%
% Full	92,2%	90,8%			90,8%	91,5%	

TRAFFIC INDICATORS

Breakdown of total traffic (tonnes)	Monthly accumulated				% 24-23 accum. May	% 24-23 accum. April	% of total accum. 2024
	2023	2024	Diff. 24-23	%			
Goods indicators by type of packaging (t)	31.677.909	34.939.165	3.261.256	10,3%	8,4%	8,6%	100%
Liquid bulk	6.664.164	6.717.517	53.353	0,8%	-6,3%	-12,6%	19,2%
Hydrocarbons	4.739.621	4.335.919	-403.701	-8,5%	-15,3%	-20,7%	12,4%
Petrol	1.329.088	1.785.234	456.146	34,3%	9,1%	1,2%	5,1%
Diesel oils	1.143.833	1.075.448	-68.385	-6,0%	-1,0%	8,8%	3,1%
Natural gas	1.548.048	921.395	-626.653	-40,5%	-41,1%	-56,0%	2,6%
Fuel oil	619.125	415.880	-203.245	-32,8%	-37,9%	-18,2%	1,2%
Other petroleum products	88.759	127.099	38.340	43,2%	41,9%	29,2%	0,4%
Remainder	10.768	10.863	96	0,9%	1,1%	-17,4%	0,0%
Other liquid bulk	1.924.543	2.381.598	457.055	23,7%	16,1%	7,2%	6,8%
Chemical products	701.131	1.270.456	569.326	81,2%	63,8%	45,8%	3,6%
Biofuel	733.787	593.414	-140.373	-19,1%	-25,4%	-24,1%	1,7%
Oils and fats	451.319	434.424	-16.895	-3,7%	-0,6%	-9,7%	1,2%
Natural/artificial fertilizer	32.390	38.230	5.840	18,0%	41,1%	-14,2%	0,1%
Other cargo by type	0	31.123	31.123	0,0%	0,0%	0,0%	0,1%
Remainder	5.917	13.951	8.035	135,8%	58,9%	-46,8%	0,0%
Dry bulk	2.694.972	2.335.816	-359.156	-13,3%	-12,9%	-14,5%	6,7%
Special installation	2.552.073	2.177.706	-374.367	-14,7%	-13,6%	-14,5%	6,2%
Soya bean	891.521	806.147	-85.374	-9,6%	-4,3%	-0,3%	2,3%
Cereals and flours	468.456	483.907	15.452	3,3%	-27,5%	15,1%	1,4%
Cement and clinker	589.804	370.014	-219.790	-37,3%	-27,9%	-47,7%	1,1%
Potashes	215.889	280.739	64.850	30,0%	40,8%	28,7%	0,8%
Common salt	368.346	223.196	-145.150	-39,4%	-27,5%	-52,4%	0,6%
Remainder	18.057	13.703	-4.354	-24,1%	13,7%	89,0%	0,0%
Without special installation	142.899	158.110	15.211	10,6%	-2,6%	-15,4%	0,5%
Scrap iron	101.445	105.803	4.358	4,3%	-18,7%	-18,3%	0,3%
Other non-metallic minerals	24.091	15.800	-8.291	-34,4%	-28,5%	-38,3%	0,0%
Other minerals and metallic waste	5.800	13.400	7.600	131,0%	131,0%	44,8%	0,0%
Chemical products	8.450	12.345	3.895	46,1%	46,1%	25,5%	0,0%
Common salt	3.113	5.912	2.799	89,9%	89,9%	-13,3%	0,0%
Remainder	0	4.851	4.851				0,0%
General cargo	22.318.773	25.885.832	3.567.058	16,0%	15,4%	18,0%	74,1%
Containerized	16.580.035	19.927.277	3.347.242	20,2%	19,3%	22,5%	57,0%
Tare of containers	3.293.306	4.040.166	746.860	22,7%	22,4%	25,0%	11,6%
Chemical products	2.577.324	3.179.003	601.679	23,3%	19,9%	22,2%	9,1%
Other cargo by type	1.737.038	2.143.556	406.518	23,4%	20,9%	28,8%	6,1%
Other food products	1.681.371	1.827.387	146.016	8,7%	14,2%	16,4%	5,2%
Paper and pulp	1.222.412	1.348.877	126.465	10,3%	13,0%	21,9%	3,9%
Remainder	6.068.584	7.388.288	1.319.704	21,7%	19,4%	21,5%	21,1%
Non-containerized	5.738.738	5.958.554	219.816	3,8%	4,1%	4,5%	17,1%
Tare of platform and wagons (Ro-Ro)	2.173.783	2.223.928	50.145	2,3%	2,9%	3,6%	6,4%
Other cargo by type	938.003	1.007.063	69.060	7,4%	5,4%	3,6%	2,9%
Machinery and spare parts	574.162	614.717	40.555	7,1%	10,2%	10,2%	1,8%
Automobiles and parts	682.289	611.288	-71.001	-10,4%	-9,4%	-12,8%	1,7%
Frozen fish	267.626	264.962	-2.664	-1,0%	-2,0%	-0,1%	0,8%
Remainder	1.102.875	1.236.596	133.721	12,1%	11,8%	16,8%	3,5%

TRAFFIC INDICATORS

Breakdown of traffic in transit (tonnes)	Monthly accumulated				% 24-23 accum. May	% 24-23 accum. April	% of total accum. 2024
	2023	2024	Diff. 24-23	%			
Goods indicators by type of packaging (t)	10.094.965	14.036.822	3.941.857	39,0%	33,0%	37,9%	100%
Liquid bulk	2.210.522	2.980.651	770.128	34,8%	15,8%	12,0%	21,2%
Hydrocarbons	1.358.396	1.710.917	352.521	26,0%	3,4%	2,5%	12,2%
Petrol	620.579	1.060.254	439.675	70,8%	31,8%	9,2%	7,6%
Fuel oil	419.924	327.835	-92.090	-21,9%	-31,8%	-22,0%	2,3%
Diesel oils	317.893	309.321	-8.572	-2,7%	-6,6%	12,7%	2,2%
Other petroleum products	0	13.508	13.508				0,1%
Remainder	0	0	0				0,0%
Other liquid bulk	852.126	1.269.733	417.607	49,0%	37,7%	26,8%	9,0%
Chemical products	355.205	844.989	489.784	137,9%	111,4%	75,3%	6,0%
Biofuel	477.834	397.929	-79.905	-16,7%	-18,4%	-13,1%	2,8%
Oils and fats	19.087	15.418	-3.668	-19,2%	-19,2%	-50,9%	0,1%
Other cargo by type	0	11.397	11.397				0,1%
Remainder	0	0	0				0,0%
Dry bulk	0	0	0				0,0%
Special installation	0	0	0				0,0%
Remainder	0	0	0				0,0%
Without special installation	0	0	0				0,0%
Remainder	0	0	0				0,0%
General cargo	7.884.443	11.056.171	3.171.728	40,2%	38,2%	45,2%	78,8%
Containerized	7.659.381	10.745.821	3.086.440	40,3%	38,2%	45,4%	76,6%
Tare of containers	1.311.991	1.943.080	631.089	48,1%	45,6%	53,0%	13,8%
Chemical products	1.004.482	1.380.738	376.257	37,5%	28,5%	34,3%	9,8%
Other food products	1.002.572	1.211.763	209.191	20,9%	31,3%	37,6%	8,6%
Other cargo by type	757.888	1.121.095	363.207	47,9%	44,1%	57,9%	8,0%
Other construction materials	488.131	766.704	278.573	57,1%	48,3%	53,5%	5,5%
Remainder	3.094.317	4.322.441	1.228.125	39,7%	37,3%	44,1%	30,8%
Non-containerized	225.062	310.350	85.288	37,9%	39,6%	39,1%	2,2%
Automobiles and parts	94.612	101.910	7.298	7,7%	6,6%	-3,1%	0,7%
Tare of platform and wagons (Ro-Ro)	31.010	53.083	22.074	71,2%	74,5%	80,0%	0,4%
Other cargo by type	31.763	43.360	11.596	36,5%	26,7%	22,1%	0,3%
Oils and fats	6.600	33.147	26.547	402,2%	506,6%	784,4%	0,2%
Wines, beverages, spirits and derivatives	13.065	30.492	17.427	133,4%	145,7%	180,3%	0,2%
Remainder	48.012	48.358	346	0,7%	3,8%	3,8%	0,3%

TRAFFIC INDICATORS

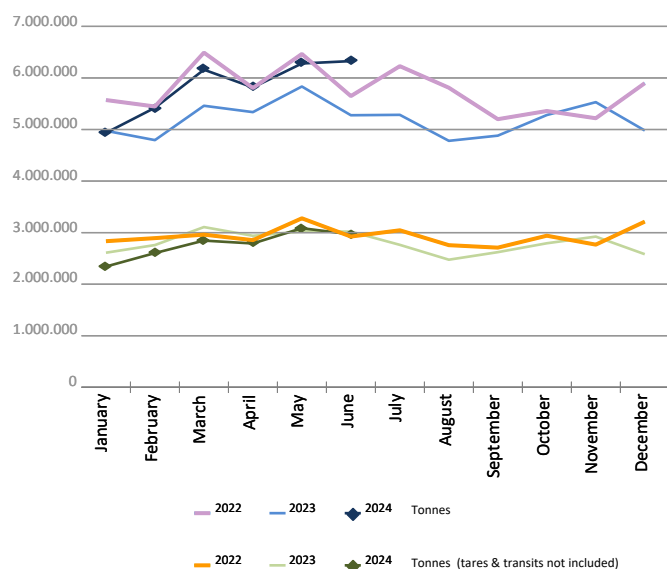
Monthly evolution of traffic. Tonnes

Monthly evolution of traffic	Total tonnes			%		Tonnes (tares & transits not included)			%	
	2023	2024	Diff. 24-23	Monthly	Accumulated	2023	2024	Diff. 24-23	Monthly	Accumulated
January	4.974.831	4.933.869	-40.963	-0,8%	-0,8%	2.610.318	2.341.824	-268.494	-10,3%	-10,3%
February	4.794.197	5.421.766	627.569	13,1%	6,0%	2.759.119	2.603.695	-155.424	-5,6%	-7,9%
March	5.460.878	6.160.206	699.328	12,8%	8,4%	3.107.624	2.845.411	-262.212	-8,4%	-8,1%
April	5.337.004	5.815.975	478.971	9,0%	8,6%	2.938.796	2.789.524	-149.272	-5,1%	-7,3%
May	5.834.193	6.280.602	446.409	7,7%	8,4%	3.022.618	3.086.264	63.646	2,1%	-5,3%
June	5.276.806	6.326.746	1.049.940	19,9%	10,3%	3.020.382	2.967.694	-52.688	-1,7%	-4,7%
July	5.284.608					2.762.705				
August	4.780.504					2.474.573				
September	4.880.699					2.621.228				
October	5.280.687					2.793.661				
November	5.530.578					2.922.782				
December	4.980.557					2.581.574				
Total	62.415.542	34.939.165				33.615.379	16.634.412			

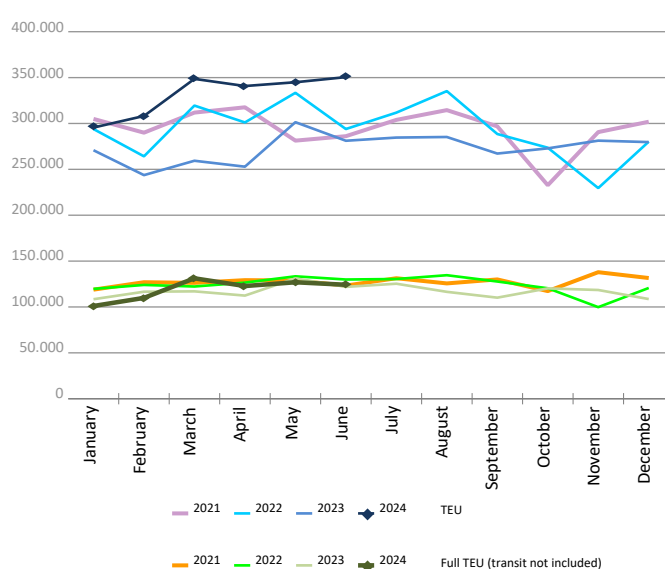
Monthly evolution of traffic. TEU

Monthly evolution of traffic	Total TEU			%		Full TEU (transit not included)			%	
	2023	2024	Diff. 24-23	Monthly	Accumulated	2023	2024	Diff. 24-23	Monthly	Accumulated
January	270.816	295.528	24.712	9,1%	9,1%	108.430	101.061	-7.369	-6,8%	-6,8%
February	243.685	308.162	64.477	26,5%	17,3%	116.640	109.884	-6.757	-5,8%	-6,3%
March	259.357	348.577	89.219	34,4%	23,1%	117.011	131.246	14.235	12,2%	0,0%
April	252.905	340.806	87.901	34,8%	25,9%	112.397	122.821	10.423	9,3%	2,3%
May	301.382	344.920	43.538	14,4%	23,3%	131.146	126.926	-4.221	-3,2%	1,1%
June	281.167	350.511	69.344	24,7%	23,6%	121.905	124.181	2.277	1,9%	1,2%
July	284.638					125.356				
August	285.262					116.482				
September	267.204					110.162				
October	272.864					120.252				
November	281.267					118.502				
December	279.693					108.620				
Total	3.280.239	1.988.502				1.406.901	716.117			

Goods (total tonnes)



Containers (total TEU)



CONTAINER TRAFFIC

TEU evolution

Full-unloaded foreign	Full TEU			%		Full-loaded foreign	Full TEU			%	
	2023	2024	Diff. 24-23	Monthly	Accumulated		2023	2024	Diff. 24-23	Monthly	Accumulated
January	49.138	41.691	-7.447	-15,2%	-15,2%	January	51.046	49.933	-1.113	-2,2%	-2,2%
February	51.449	44.498	-6.951	-13,5%	-14,3%	February	56.052	55.500	-552	-1,0%	-1,6%
March	44.515	58.372	13.858	31,1%	-0,4%	March	60.781	61.850	1.069	1,8%	-0,4%
April	51.432	57.415	5.984	11,6%	2,8%	April	51.392	55.912	4.520	8,8%	1,8%
May	64.095	56.610	-7.485	-11,7%	-0,8%	May	56.516	60.485	3.969	7,0%	2,9%
June	53.940	59.308	5.368	10,0%	1,1%	June	57.195	54.844	-2.351	-4,1%	1,7%
July	59.685					July	54.831				
August	56.638					August	50.134				
September	48.415					September	50.745				
October	52.489					October	57.938				
November	48.781					November	59.645				
December	43.001					December	55.662				
Total	623.574	317.893				Total	661.934	338.523			

Full-unloaded domestic	Full TEU			%		Full-loaded domestic	Full TEU			%	
	2023	2024	Diff. 24-23	Monthly	Accumulated		2023	2024	Diff. 24-23	Monthly	Accumulated
January	1.702	2.174	473	27,8%	27,8%	January	6.545	7.264	719	11,0%	11,0%
February	1.836	2.269	434	23,6%	25,6%	February	7.304	7.617	313	4,3%	7,4%
March	2.227	2.280	53	2,4%	16,6%	March	9.488	8.744	-744	-7,8%	1,2%
April	1.818	2.011	194	10,6%	15,2%	April	7.756	7.483	-274	-3,5%	0,0%
May	2.223	2.226	3	0,1%	11,8%	May	8.313	7.606	-708	-8,5%	-1,8%
June	1.938	1.919	-19	-1,0%	9,7%	June	8.833	8.111	-723	-8,2%	-2,9%
July	1.881					July	8.960				
August	1.989					August	7.722				
September	2.163					September	8.839				
October	2.164					October	7.662				
November	1.913					November	8.164				
December	1.886					December	8.072				
Total	23.737	12.878				Total	97.656	46.823			

Full - Transit	Full TEU			%		Empty	Empty TEU			%	
	2023	2024	Diff. 24-23	Monthly	Accumulated		2023	2024	Diff. 24-23	Monthly	Accumulated
January	97.136	112.121	14.985	15,4%	15,4%	January	65.251	82.346	17.096	26,2%	26,2%
February	71.919	117.901	45.982	63,9%	36,1%	February	55.126	80.377	25.251	45,8%	35,2%
March	83.590	133.694	50.104	59,9%	44,0%	March	58.757	83.638	24.881	42,3%	37,5%
April	83.957	133.595	49.639	59,1%	47,7%	April	56.551	84.390	27.839	49,2%	40,3%
May	97.501	116.355	18.854	19,3%	41,4%	May	72.735	101.639	28.904	39,7%	40,2%
June	84.535	138.589	54.055	63,9%	45,0%	June	74.728	87.741	13.013	17,4%	35,8%
July	93.112					July	66.171				
August	83.799					August	84.981				
September	86.284					September	70.759				
October	90.691					October	61.921				
November	86.554					November	76.211				
December	90.642					December	80.432				
Total	1.049.717	752.254				Total	823.622	520.131			

CONTAINER TRAFFIC

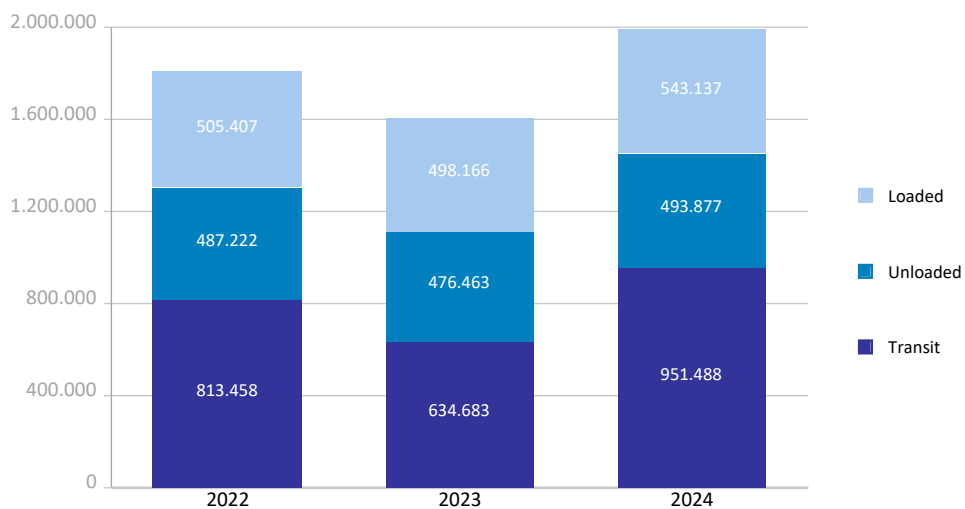
TEU

Container traffic	Monthly accumulated 2023			Monthly accumulated 2024			%
	Domestic	Foreign	Total	Domestic	Foreign	Total	
Total traffic	113.257	1.496.055	1.609.312	110.856	1.877.646	1.988.502	23,6%
Unloaded	60.414	745.669	806.083	58.889	945.324	1.004.213	24,6%
Roll On-Roll Off	13.842	7.213	21.055	11.526	5.496	17.022	-19,2%
Lift On-Lift Off	46.573	738.456	785.028	47.363	939.828	987.191	25,8%
Loaded	52.843	750.387	803.229	51.967	932.323	984.289	22,5%
Roll On-Roll Off	15.322	7.157	22.479	11.837	5.296	17.133	-23,8%
Lift On-Lift Off	37.521	743.230	780.751	40.130	927.027	967.157	23,9%

Breakdown by navigation and operation	Monthly accumulated 2023			Monthly accumulated 2024			%
	Domestic	Foreign	Total	Domestic	Foreign	Total	
Loaded	52.818	445.349	498.166	51.957	491.180	543.137	9,0%
Full	48.240	332.981	381.220	46.823	338.523	385.346	1,1%
Empty	4.578	112.368	116.946	5.134	152.657	157.791	34,9%
Unloaded	57.744	418.719	476.463	57.499	436.378	493.877	3,7%
Full	11.742	314.567	326.308	12.878	317.893	330.771	1,4%
Empty	46.003	104.152	150.155	44.621	118.485	163.106	8,6%
Transit	2.695	631.988	634.683	1.400	950.089	951.488	49,9%
Full	38	518.599	518.637	11	752.244	752.254	45,0%
Empty	2.657	113.390	116.047	1.389	197.845	199.234	71,7%

Total traffic	113.257	1.496.055	1.609.312	110.856	1.877.646	1.988.502	23,6%
Full	60.019	1.166.146	1.226.165	59.712	1.408.660	1.468.371	19,8%
Empty	53.238	329.910	383.147	51.144	468.987	520.131	35,8%
% Empty	47,0%	22,1%	23,8%	46,1%	25,0%	26,2%	
% Transit	2,4%	42,2%	39,4%	1,3%	50,6%	47,8%	

General cargo distribution by operation (TEU)

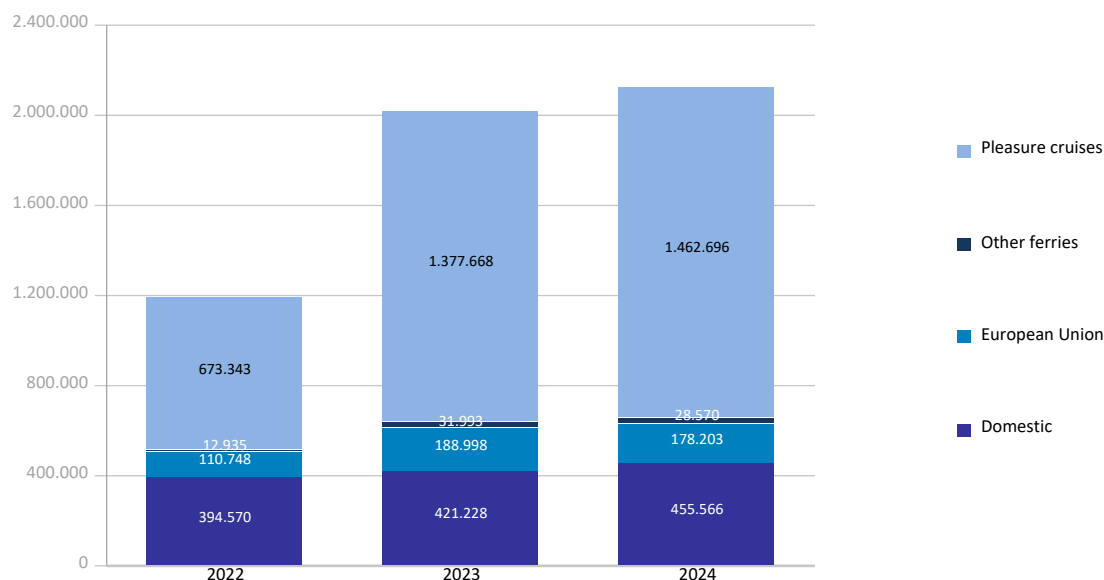


PASSENGER TRAFFIC

Total passenger traffic (units)	Monthly accumulated				% 24-23 accum. May	% 24-23 accum. April
	2023	2024	Diff. 24-23	%		
Total passengers	2.019.887	2.125.035	105.148	5,2%	3,4%	4,9%
Embarkation	710.091	761.888	51.797	7,3%	4,4%	7,9%
Disembarkation	637.307	695.500	58.193	9,1%	7,0%	9,1%
Transit	672.489	667.647	-4.842	-0,7%	-0,7%	-1,5%
Regular line ferries	642.219	662.339	20.120	3,1%	2,3%	2,5%
Embarkation	350.245	360.036	9.791	2,8%	1,7%	1,9%
Disembarkation	291.974	302.303	10.329	3,5%	3,0%	3,2%
Domestic	421.228	455.566	34.338	8,2%	8,0%	5,1%
Embarkation	238.655	256.106	17.451	7,3%	7,4%	4,1%
Disembarkation	182.573	199.460	16.887	9,2%	8,9%	6,5%
European Union	188.998	178.203	-10.795	-5,7%	-6,4%	-0,4%
Embarkation	93.617	88.165	-5.452	-5,8%	-7,5%	0,7%
Disembarkation	95.381	90.038	-5.343	-5,6%	-5,4%	-1,4%
Other ferries	31.993	28.570	-3.423	-10,7%	-15,8%	-12,6%
Embarkation	17.973	15.765	-2.208	-12,3%	-21,9%	-20,9%
Disembarkation	14.020	12.805	-1.215	-8,7%	-9,4%	-3,8%
Pleasure cruises	1.377.668	1.462.696	85.028	6,2%	4,0%	6,4%
Embarkation	359.846	401.852	42.006	11,7%	7,3%	17,9%
Disembarkation	345.333	393.197	47.864	13,9%	10,6%	17,7%
Transit	672.489	667.647	-4.842	-0,7%	-0,7%	-1,5%

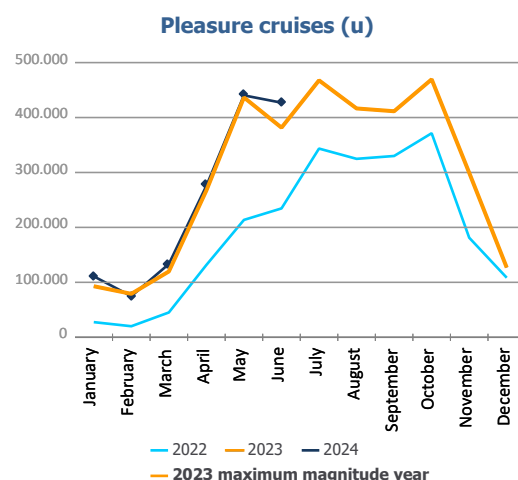
Total passenger calls (units)	Monthly accumulated				% 24-23 accum. May	% 24-23 accum. April
	2023	2024	Diff. 24-23	%		
Total number of calls	1.879	1.781	-98	-5,2%	-4,8%	-3,4%
Regular Line ferries	1.533	1.458	-75	-4,9%	-3,9%	-2,7%
Pleasure cruises	346	323	-23	-6,6%	-9,2%	-7,6%

Passenger traffic distribution (u)

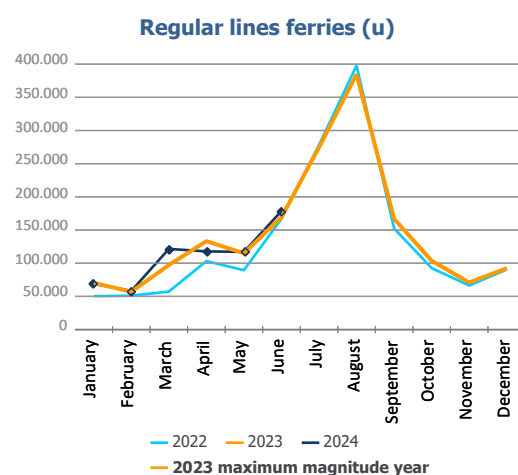


PASSENGER CLASSIFICATION

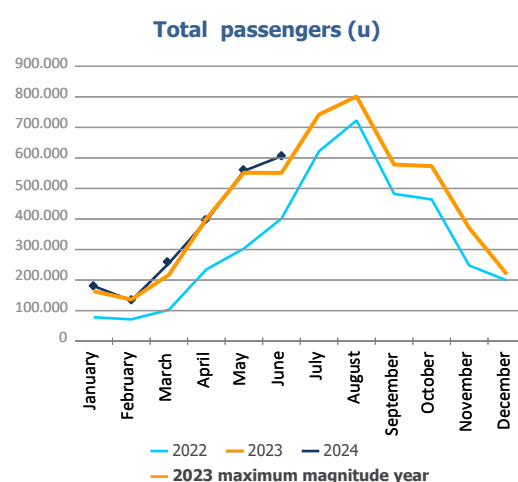
Monthly evolution of passenger traffic	Pleasure cruises			%	
	2023	2024	Diff. 24-23	Monthly	Accumulated
January	93.013	111.036	18.023	19,4%	19,4%
February	79.194	74.939	-4.255	-5,4%	8,0%
March	119.885	133.501	13.616	11,4%	9,4%
April	267.420	275.893	8.473	3,2%	6,4%
May	436.569	440.310	3.741	0,9%	4,0%
June	381.587	427.017	45.430	11,9%	6,2%
July	467.607				
August	416.517				
September	411.457				
October	469.510				
November	299.424				
December	126.942				
Total	3.569.125	1.462.696			



Monthly evolution of passenger traffic	Regular lines ferries			%	
	2023	2024	Diff. 24-23	Monthly	Accumulated
January	70.262	68.931	-1.331	-1,9%	-1,9%
February	57.059	58.232	1.173	2,1%	-0,1%
March	97.166	121.528	24.362	25,1%	10,8%
April	133.201	117.845	-15.356	-11,5%	2,5%
May	115.112	117.084	1.972	1,7%	2,3%
June	169.419	178.719	9.300	5,5%	3,1%
July	274.632				
August	384.652				
September	166.887				
October	103.714				
November	71.033				
December	92.358				
Total	1.735.495	662.339			



Monthly evolution of passenger traffic	Total passengers			%	
	2023	2024	Diff. 24-23	Monthly	Accumulated
January	163.275	179.967	16.692	10,2%	10,2%
February	136.253	133.171	-3.082	-2,3%	4,5%
March	217.051	255.029	37.978	17,5%	10,0%
April	400.621	393.738	-6.883	-1,7%	4,9%
May	551.681	557.394	5.713	1,0%	3,4%
June	551.006	605.736	54.730	9,9%	5,2%
July	742.239				
August	801.169				
September	578.344				
October	573.224				
November	370.457				
December	219.300				
Total	5.304.620	2.125.035			

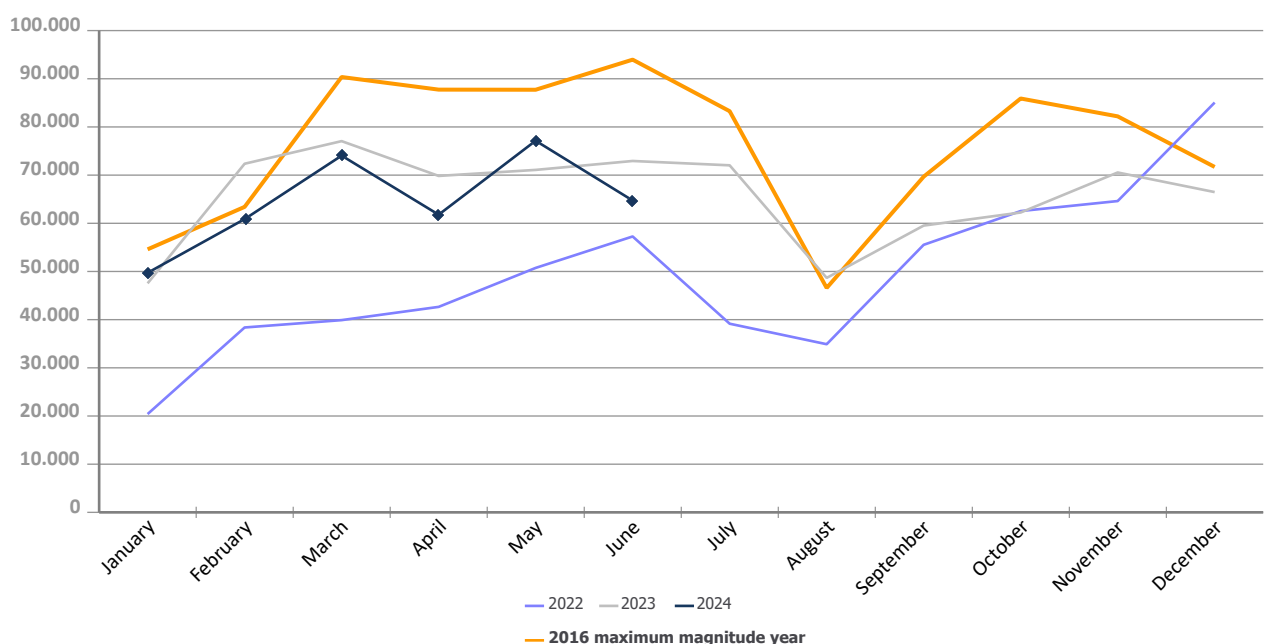


AUTOMOBILE TRAFFIC

Total automobile traffic (units)	Monthly accumulated				% 24-23 accum. May	% 24-23 accum. April
	2023	2024	Diff. 24-23	%		
Automobile traffic by navigation and operation	410.807	388.291	-22.516	-5,5%	-4,2%	-7,6%
Domestic	59.736	61.129	1.393	2,3%	-0,3%	-5,1%
Loaded	54.118	56.126	2.008	3,7%	2,0%	-2,0%
Unloaded	5.597	4.930	-667	-11,9%	-21,5%	-29,4%
Transit	21	73	52	247,6%	247,6%	
Foreign	351.071	327.162	-23.909	-6,8%	-4,9%	-8,0%
Loaded	166.193	189.667	23.474	14,1%	19,0%	14,4%
Unloaded	126.420	81.643	-44.777	-35,4%	-35,0%	-33,5%
Transit	58.458	55.852	-2.606	-4,5%	-4,1%	-9,5%

Monthly automobile traffic (u)	Monthly		Accumulated		%	
	2023	2024	2023	2024	Monthly	Accumulated
January	47.534	49.721	47.534	49.721	4,6%	4,6%
February	72.364	60.872	119.898	110.593	-15,9%	-7,8%
March	77.057	74.044	196.955	184.637	-3,9%	-6,3%
April	69.834	61.791	266.789	246.428	-11,5%	-7,6%
May	71.083	77.134	337.872	323.562	8,5%	-4,2%
June	72.935	64.729	410.807	388.291	-11,3%	-5,5%
July	72.037		482.844			
August	48.671		531.515			
September	59.527		591.042			
October	62.244		653.286			
November	70.552		723.838			
December	66.480		790.318			

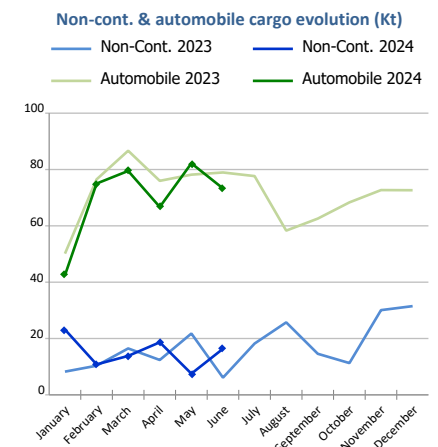
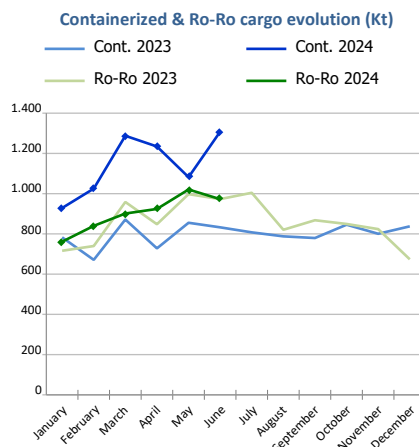
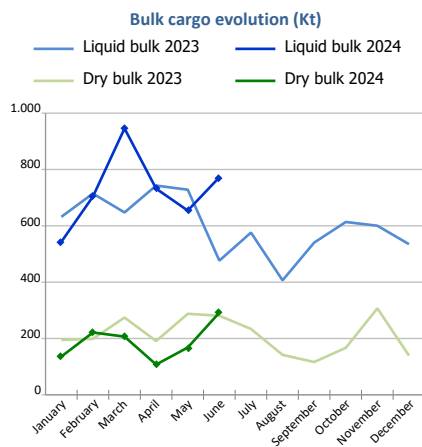
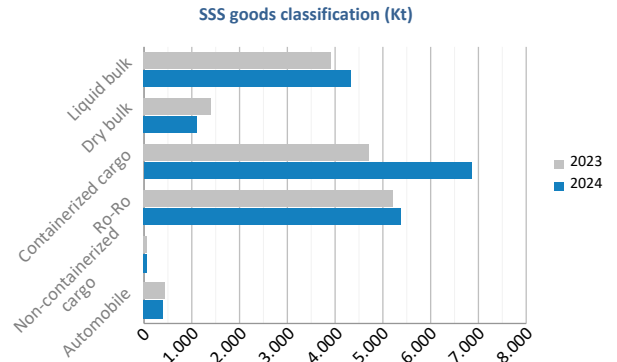
Evolution of monthly automobile traffic (u)



SHORT SEA SHIPPING (SSS)

SSS Goods classification

Goods classification. Tonnes	Monthly accumulated		%	% of total port traffic
	2023	2024		
Liquid bulk	3.941.384	4.351.153	10,4%	64,8%
Dry bulk	1.427.371	1.130.757	-20,8%	48,4%
Containerized cargo	4.740.837	6.865.658	44,8%	34,9%
Ro-Ro	5.232.774	5.419.422	3,6%	99,6%
Non-containerized cargo	75.309	90.326	19,9%	40,0%
Automobile	446.399	419.193	-6,1%	74,2%
Total	15.864.074	18.276.509	15,2%	52,3%



SSS General Cargo	Spanish Islands			SSS Remainder			TOTAL		
	2023	2024	%	2023	2024	%	2023	2024	%
Containerized cargo	442.624	478.959	8,2%	4.298.213	6.386.698	48,6%	4.740.837	6.865.658	44,8%
O/D	434.822	461.259	6,1%	1.583.257	1.933.418	22,1%	2.018.079	2.394.677	18,7%
Transit	7.801	17.700	126,9%	2.714.956	4.453.280	64,0%	2.722.757	4.470.980	64,2%
Ro-Ro	2.938.046	2.995.009	1,9%	2.294.728	2.424.413	5,7%	5.232.774	5.419.422	3,6%
O/D	2.938.046	2.994.955	1,9%	2.162.371	2.200.482	1,8%	5.100.417	5.195.438	1,9%
Transit	0	54		132.357	223.931	69,2%	132.357	223.985	69,2%
Non-cont. cargo	820	809	-1,4%	74.488	89.517	20,2%	75.309	90.326	19,9%
O/D	820	809	-1,4%	73.292	88.615	20,9%	74.112	89.423	20,7%
Transit	0	0		1.196	902	-24,6%	1.196	902	-24,6%
Automobile	88.519	87.935	-0,7%	357.880	331.258	-7,4%	446.399	419.193	-6,1%
O/D	88.351	87.907	-0,5%	297.916	276.258	-7,3%	386.268	364.165	-5,7%
Transit	168	28	-83,2%	59.964	55.000	-8,3%	60.131	55.028	-8,5%



Short Sea Shipping (SSS):

The transport of cargo/goods and passengers between ports situated in the European Union or between these ports and non-European ports with a coastline in seas bordering Europe. This applies to cargo either originating from or is destined for these countries (in accordance with the European Shortsea Network).

Motorways of the sea (MoS):

Short Sea Shipping services as an alternative to road transport and which fulfill the following criteria: minimum frequency of 3 calls per week and calling at a maximum of 3 different ports.

General cargo:

Including containerized cargo, non-containerized cargo, Ro-Ro and automobiles.

Containerized cargo:

Excluding container cargo by Ro-Ro.

Non-containerized cargo:

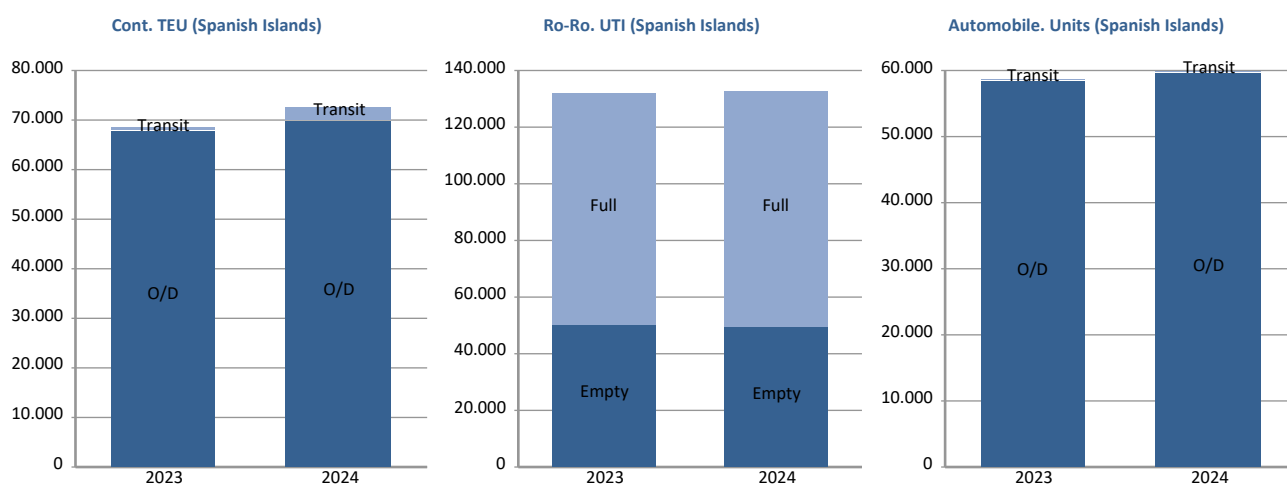
General non-containerized goods other than Ro-Ro and excluding automobiles.

Ro-Ro:

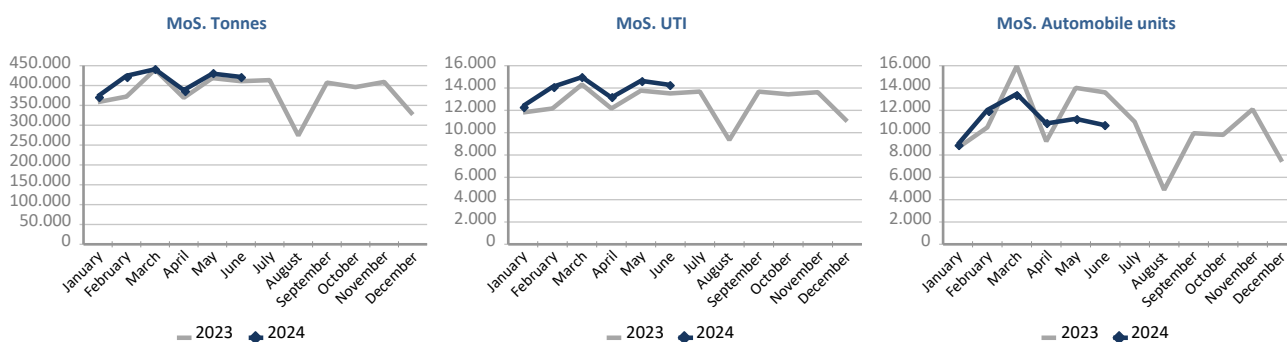
General cargo carried in UTI's. Excluding automobiles.

SHORT SEA SHIPPING (SSS)

SSS General cargo	Spanish Islands			SSS Remainder			TOTAL		
	2023	2024	%	2023	2024	%	2023	2024	%
Containerized cargo. TEU	68.459	72.402	5,8%	406.985	604.525	48,5%	475.444	676.927	42,4%
O/D	67.686	69.949	3,3%	192.085	237.139	23,5%	259.771	307.088	18,2%
Full	42.164	45.079	6,9%	112.364	135.095	20,2%	154.528	180.174	16,6%
Empty	25.522	24.870	-2,6%	79.721	102.044	28,0%	105.243	126.915	20,6%
Transit	773	2.453	217,3%	214.901	367.387	71,0%	215.674	369.839	71,5%
Full	613	1.463	138,6%	196.102	331.704	69,1%	196.715	333.166	69,4%
Empty	160	990	518,8%	18.799	35.683	89,8%	18.959	36.673	93,4%
Ro-Ro. UTI	132.063	132.532	0,4%	78.715	84.770	7,7%	210.778	217.302	3,1%
Full	82.231	83.526	1,6%	72.307	76.720	6,1%	154.538	160.246	3,7%
Empty	49.832	49.006	-1,7%	6.408	8.050	25,6%	56.240	57.056	1,5%
Automobile units	58.541	59.698	2,0%	247.354	240.885	-2,6%	305.895	300.583	-1,7%
O/D	58.427	59.676	2,1%	207.561	203.075	-2,2%	265.988	262.751	-1,2%
Transit	114	22	-80,7%	39.793	37.810	-5,0%	39.907	37.832	-5,2%



Motorways of the Sea (MoS)	2023	EU		2023	Non-EU		2023	TOTAL	
		2024	%		2024	%		2024	%
Tonnes	2.355.793	2.473.601	5,0%	13.731	4.843	-64,7%	2.369.524	2.478.444	4,6%
Loaded	1.255.862	1.340.272	6,7%	8.821	4.185	-52,6%	1.264.682	1.344.457	6,3%
Unloaded	1.099.931	1.133.329	3,0%	4.910	658	-86,6%	1.104.842	1.133.987	2,6%
UTI	77.070	83.305	8,1%	674	221	-67,2%	77.744	83.526	7,4%
Loaded	39.408	43.053	9,2%	463	192	-58,5%	39.871	43.245	8,5%
Unloaded	37.662	40.252	6,9%	211	29	-86,3%	37.873	40.281	6,4%
Automobile units	71.787	66.014	-8,0%	139	1.165	738,1%	71.926	67.179	-6,6%
Loaded	66.744	62.474	-6,4%	134	1.162	767,2%	66.878	63.636	-4,8%
Unloaded	5.043	3.540	-29,8%	5	3	-40,0%	5.048	3.543	-29,8%



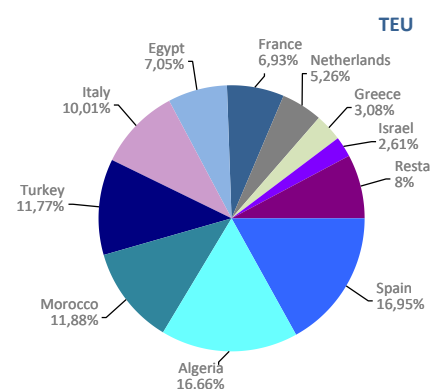
UTI: All those means of unitization, self-propelled or otherwise, that are directly or indirectly used as a means of land transport (e.g. trailers, platforms, trucks, freezer trucks, etc.) are considered as UTI. Containers are not considered to be included, except those that are handled by an equipment transport of the own terminal.

SHORT SEA SHIPPING (SSS)

SSS Ranking countries by mode of packaging

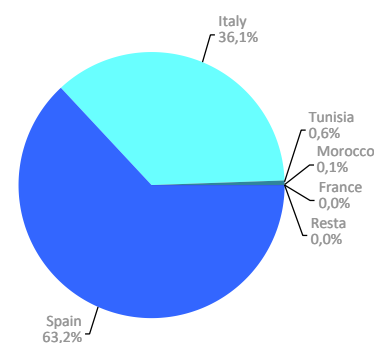
Containerized cargo. TEU	Monthly accumulated				% of total 2024
	2023	2024	Diff. 24-23	%	
Total	475.444	676.927	201.483	42,4%	100%
Spain	98.991	114.764	15.773	15,9%	17,0%
Algeria	87.850	112.755	24.905	28,3%	16,7%
Morocco	59.014	80.446	21.432	36,3%	11,9%
Turkey	65.338	79.669	14.331	21,9%	11,8%
Italy	34.955	67.794	32.839	93,9%	10,0%
Egypt	28.882	47.743	18.861	65,3%	7,1%
France	35.295	46.906	11.611	32,9%	6,9%
Netherlands	783	35.628	34.845	4453,0%	5,3%
Greece	16.093	20.872	4.779	29,7%	3,1%
Israel	10.125	17.673	7.548	74,6%	2,6%
Remainder	38.120	52.680	14.560	38,2%	7,8%

Main countries



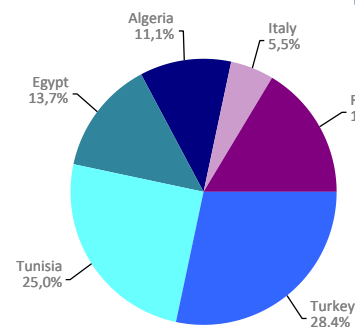
Ro-Ro. UTI	Monthly accumulated				% of total 2024
	2023	2024	Diff. 24-23	%	
Total	210.778	217.302	6.525	3,1%	100%
Spain	135.088	137.286	2.198	1,6%	63,2%
Italy	74.024	78.546	4.522	6,1%	36,1%
Tunisia	990	1.221	232	23,4%	0,6%
Morocco	674	235	-439	-65,1%	0,1%
France	0	11	11	0,0%	0,0%
Remainder	2	3	1	50,0%	0,0%

UTI



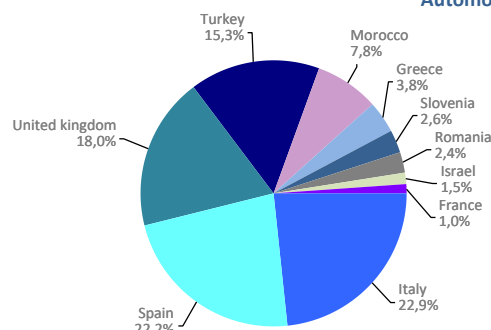
Non-cont. cargo. Tonnes	Monthly accumulated				% of total 2024
	2023	2024	Diff. 24-23	%	
Total	75.309	90.326	15.017	19,9%	100%
Turkey	852	25.677	24.825	2914,9%	28,4%
Tunisia	3.871	22.571	18.700	483,1%	25,0%
Egypt	28.721	12.401	-16.321	-56,8%	13,7%
Algeria	7.284	10.004	2.720	37,3%	11,1%
Italy	29.631	4.979	-24.653	-83,2%	5,5%
Remainder	4.949	14.695	9.746	196,9%	16,3%

Tonnes



Automobile. Units	Monthly accumulated				% of total 2024
	2023	2024	Diff. 24-23	%	
Total	305.895	300.583	-5.312	-1,7%	100%
Italy	75.318	68.717	-6.601	-8,8%	22,9%
Spain	66.433	66.685	252	0,4%	22,2%
United kingdom	41.789	54.180	12.391	29,7%	18,0%
Turkey	31.688	46.133	14.445	45,6%	15,3%
Morocco	19.576	23.370	3.794	19,4%	7,8%
Greece	10.989	11.427	438	4,0%	3,8%
Slovenia	2.570	7.884	5.314	206,8%	2,6%
Romania	10.996	7.264	-3.732	-33,9%	2,4%
Israel	8.427	4.501	-3.926	-46,6%	1,5%
France	17.534	2.911	-14.623	-83,4%	1,0%
Remainder	20.575	7.511	-13.064	-63,5%	2,5%

Automobile



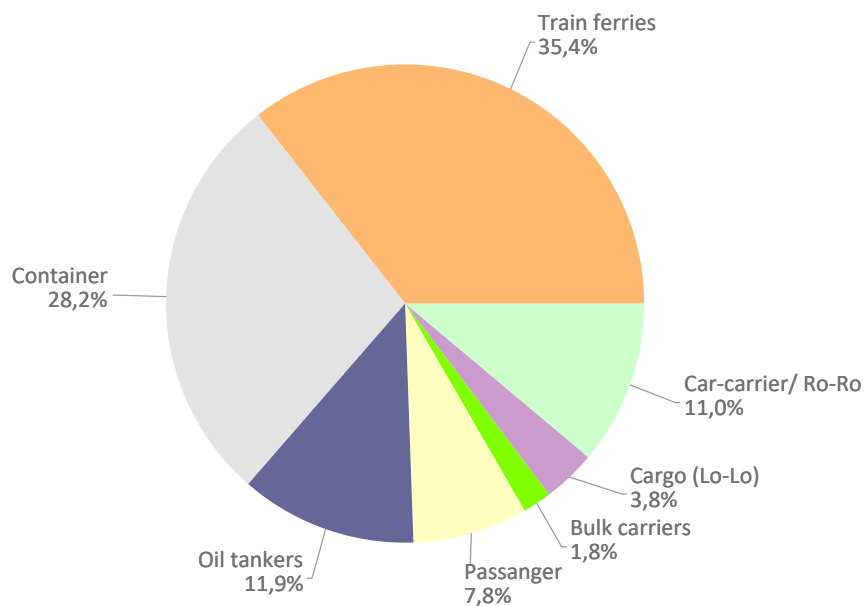
VESSELS TRAFFIC

Vessels traffic	Monthly accumulated		
	2023	2024	%
Number of calls	4.219	4.131	-2,1%
Tonnage	174.613.776	174.312.269	-0,2%
Average tonnes	41.387	42.196	2,0%

Type of vessels	Monthly accumulated					
	2023		2024		%	
	Calls	GT	Calls	GT	Calls	GT
Total	4.219	174.613.776	4.131	174.312.269	-2,1%	-0,2%
Car-carrier/ Ro-Ro	459	24.425.398	456	23.684.161	-0,7%	-3,0%
Cargo (Lo-Lo)	175	1.035.386	156	1.342.391	-10,9%	29,7%
Bulk carriers	85	2.368.209	75	2.230.935	-11,8%	-5,8%
Passanger	346	41.301.603	322	39.539.893	-6,9%	-4,3%
Oil tankers	516	9.996.652	493	8.556.245	-4,5%	-14,4%
Container	1.082	48.358.441	1.165	55.419.473	7,7%	14,6%
Train ferries	1.556	47.128.087	1.464	43.539.171	-5,9%	-7,6%

Type of vessels (monthly accumulated 2024)	Domestic		Foreign	
	Calls	GT	Calls	GT
Total	1.491	35.487.891	2.640	138.824.378
Car-carrier/ Ro-Ro	35	784.520	421	22.899.641
Cargo (Lo-Lo)	16	80.628	140	1.261.763
Bulk carriers	5	76.684	70	2.154.251
Passanger	43	2.826.516	279	36.713.377
Oil tankers	60	683.168	433	7.873.077
Container	165	1.905.650	1.000	53.513.823
Train ferries	1.167	29.130.725	297	14.408.446

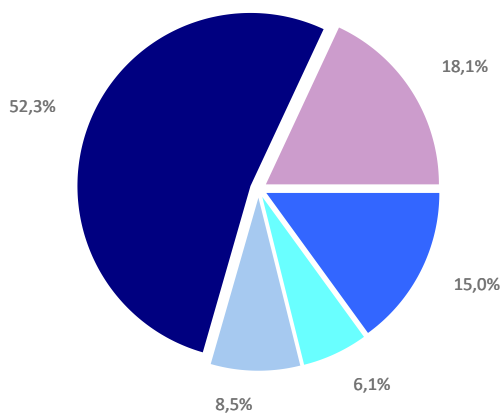
Distribution by type of vessel



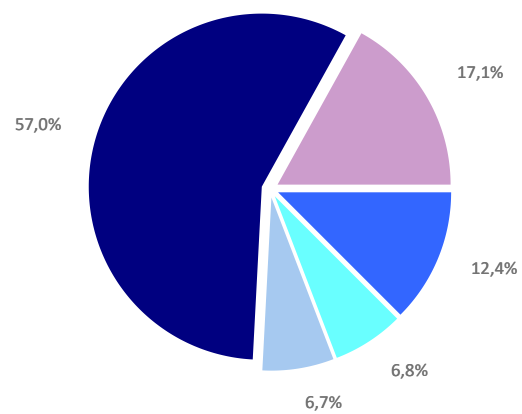
GOODS TRAFFIC

Type of packaging and navigation	Monthly accumulated 2023			Monthly accumulated 2024			%
	Domestic	Foreign	Total	Domestic	Foreign	Total	
Hydrocarbons	420.836	4.318.785	4.739.621	296.601	4.039.318	4.335.919	-8,5%
Incoming	359.633	3.528.619	3.888.252	156.355	3.236.079	3.392.434	-12,8%
Outgoing	61.203	790.166	851.368	140.246	803.239	943.485	10,8%
Other liquid bulk	93.719	1.830.824	1.924.543	247.082	2.134.515	2.381.598	23,7%
Incoming	54.865	1.231.405	1.286.270	198.973	1.460.321	1.659.295	29,0%
Outgoing	38.855	599.419	638.274	48.109	674.194	722.303	13,2%
Dry bulk	71.566	2.623.406	2.694.972	42.927	2.292.889	2.335.816	-13,3%
Incoming	63.469	1.410.251	1.473.721	42.927	1.423.449	1.466.376	-0,5%
Outgoing	8.097	1.213.155	1.221.251	0	869.440	869.440	-28,8%
Containerized cargo	700.642	15.879.393	16.580.035	685.431	19.241.846	19.927.277	20,2%
Incoming	211.947	7.581.326	7.793.273	212.400	9.357.468	9.569.868	22,8%
Outgoing	488.696	8.298.067	8.786.762	473.031	9.884.378	10.357.409	17,9%
Non-containerized cargo	2.816.898	2.921.841	5.738.738	2.913.828	3.044.726	5.958.554	3,8%
Incoming	912.851	1.497.693	2.410.544	955.987	1.503.660	2.459.647	2,0%
Outgoing	1.904.046	1.424.148	3.328.194	1.957.841	1.541.066	3.498.907	5,1%
Total general cargo	3.517.540	18.801.233	22.318.773	3.599.260	22.286.572	25.885.832	16,0%
Incoming	1.124.798	9.079.019	10.203.817	1.168.387	10.861.128	12.029.515	17,9%
Outgoing	2.392.742	9.722.215	12.114.957	2.430.872	11.425.444	13.856.316	14,4%
Total throughput (tonnes)	4.103.662	27.574.248	31.677.909	4.185.870	30.753.295	34.939.165	10,3%
Incoming	1.602.766	15.249.294	16.852.059	1.566.643	16.980.978	18.547.621	10,1%
Outgoing	2.500.896	12.324.954	14.825.850	2.619.228	13.772.317	16.391.544	10,6%
Container traffic (TEU)	113.257	1.496.055	1.609.312	110.856	1.877.646	1.988.502	23,6%
Incoming	60.414	745.669	806.083	58.889	945.324	1.004.213	24,6%
Outgoing	52.843	750.387	803.229	51.967	932.323	984.289	22,5%

Distribution by type of packaging 2023

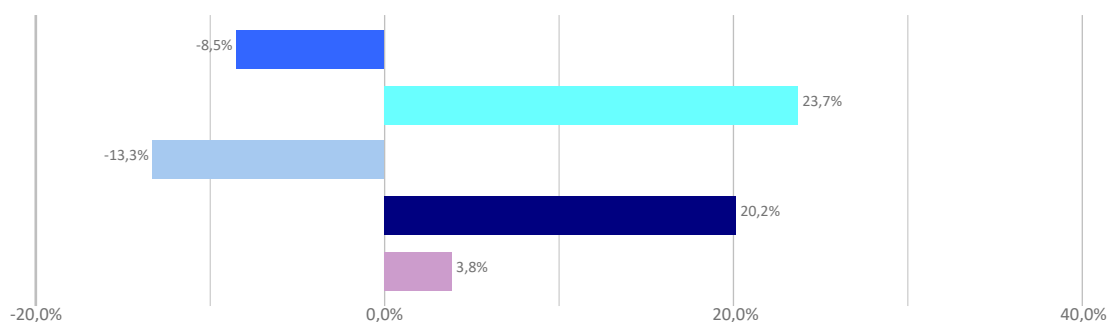


Distribution by type of packaging 2024



Hydrocarbons Liquid bulk Dry bulk Containerized cargo Non Containerized cargo

Annual growth by type of packaging



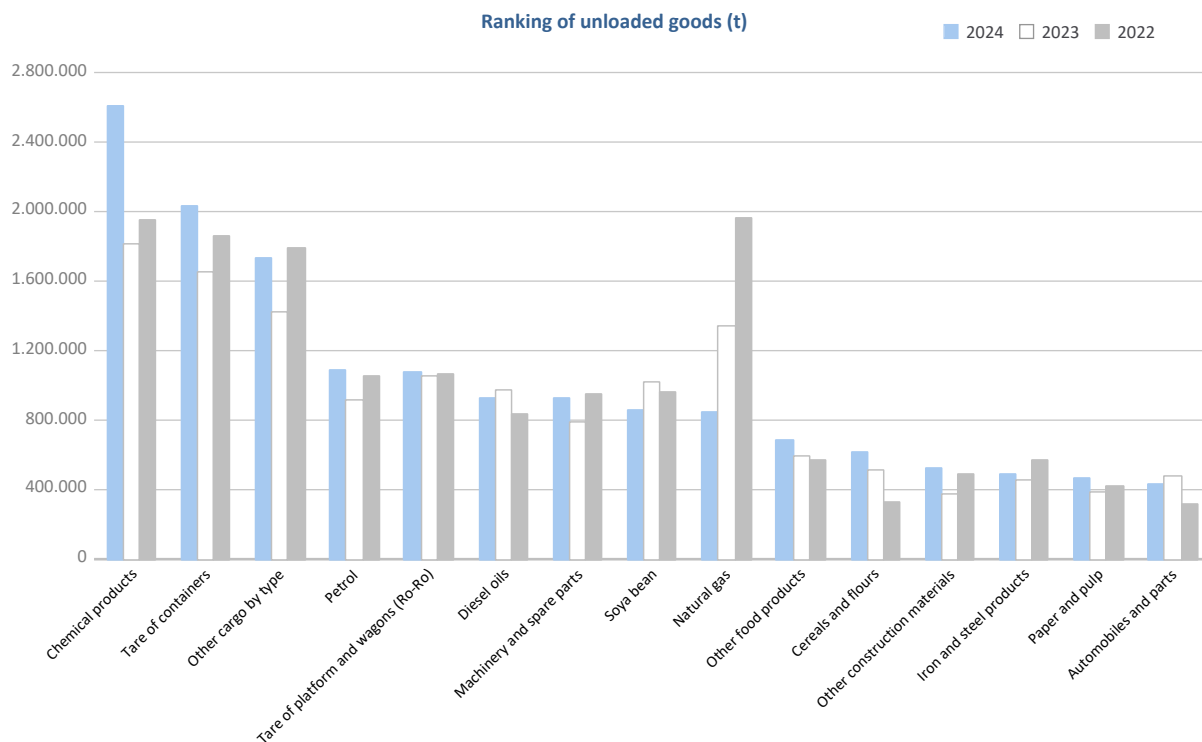
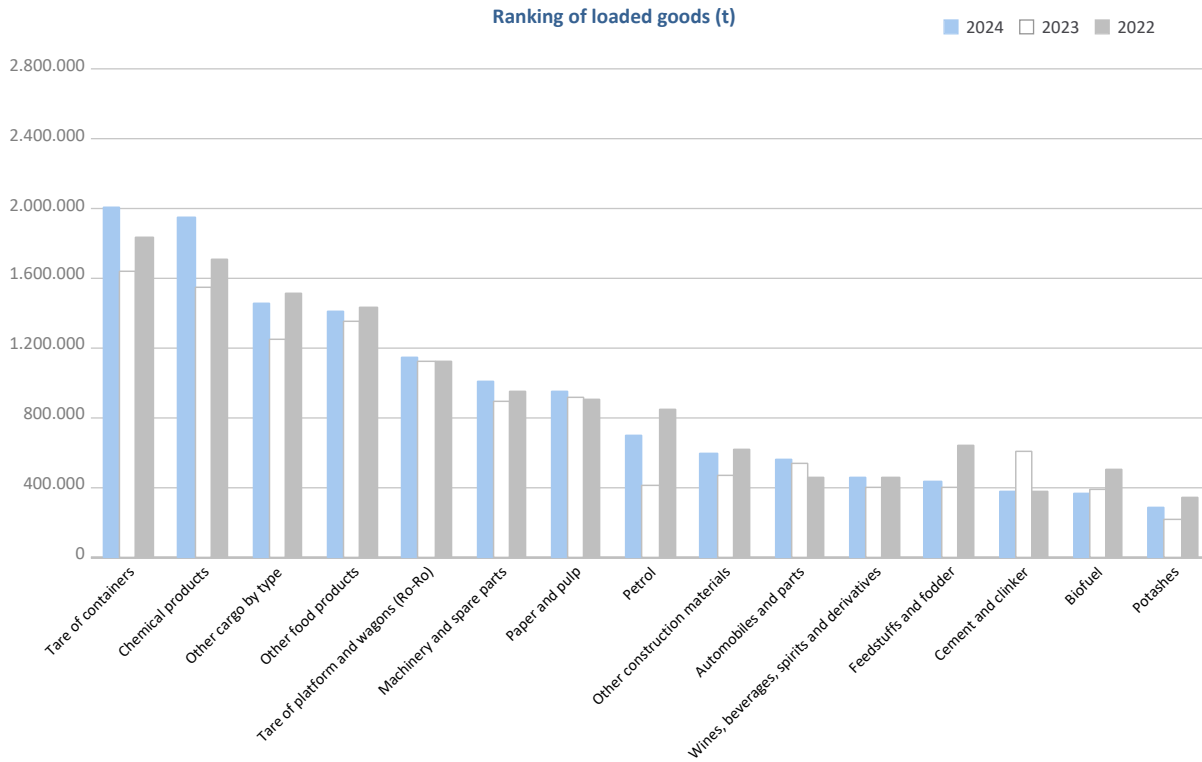
GOODS TRAFFIC

Goods by classification 4.3.7.	Monthly accumulated				% of total accum. 2024
	2023	2024	Diff. 24-23	%	
Tonnes	31.677.909	34.939.165	3.261.256	10,3%	100%
Energy	5.666.714	5.148.328	-518.386	-9,1%	14,7%
Crude oil	33	258	225	691,0%	0,0%
Fuel oil	641.997	442.874	-199.123	-31,0%	1,3%
Diesel oils	1.144.654	1.075.739	-68.916	-6,0%	3,1%
Petrol	1.329.088	1.785.291	456.204	34,3%	5,1%
Other petroleum products	118.821	161.578	42.757	36,0%	0,5%
Petroleum fuel gasses	27.951	32.266	4.315	15,4%	0,1%
Coal	36.994	33.312	-3.683	-10,0%	0,1%
Natural gas	1.548.051	921.395	-626.655	-40,5%	2,6%
Biofuel	819.125	695.616	-123.510	-15,1%	2,0%
Iron, steel and metallurgical products	1.412.879	1.570.603	157.724	11,2%	4,5%
Iron ore	2.153	3.503	1.350	62,7%	0,0%
Other minerals and metallic waste	203.663	329.746	126.083	61,9%	0,9%
Scrap iron	233.007	264.054	31.047	13,3%	0,8%
Iron and steel products	688.758	735.469	46.711	6,8%	2,1%
Other metallurgical products	285.299	237.832	-47.467	-16,6%	0,7%
Non-metallic minerals	593.090	538.088	-55.002	-9,3%	1,5%
Common salt	394.417	253.700	-140.717	-35,7%	0,7%
Other non-metallic minerals	198.672	284.387	85.715	43,1%	0,8%
Fertilizers	334.157	441.386	107.229	32,1%	1,3%
Phosphates	66	92	26	39,1%	0,0%
Potashes	217.839	301.894	84.055	38,6%	0,9%
Natural/artificial fertilizer	116.251	139.399	23.148	19,9%	0,4%
Chemicals	3.364.496	4.563.015	1.198.520	35,6%	13,1%
Chemical products	3.364.496	4.563.015	1.198.520	35,6%	13,1%
Construction materials	1.484.939	1.530.354	45.415	3,1%	4,4%
Asphalt	2.716	6.378	3.662	134,8%	0,0%
Cement and clinker	635.500	403.269	-232.231	-36,5%	1,2%
Other construction materials	846.722	1.120.707	273.985	32,4%	3,2%
Agriculture, livestock and food	6.482.572	7.042.108	559.536	8,6%	20,2%
Cereals and flours	589.686	758.544	168.858	28,6%	2,2%
Soya bean	1.134.231	919.228	-215.003	-19,0%	2,6%
Fruits, vegetables, pulses	268.995	330.018	61.022	22,7%	0,9%
Wines, beverages, spirits and derivatives	467.085	600.609	133.524	28,6%	1,7%
Canned goods	173.006	162.464	-10.542	-6,1%	0,5%
Tobacco, coffee, cocoa	400.213	561.120	160.907	40,2%	1,6%
Oils and fats	672.177	694.554	22.377	3,3%	2,0%
Other food products	1.949.232	2.100.627	151.395	7,8%	6,0%
Frozen fish	346.062	336.233	-9.829	-2,8%	1,0%
Feedstuffs and fodder	481.884	578.711	96.827	20,1%	1,7%
Other cargo	5.849.078	6.841.191	992.112	17,0%	19,6%
Timber	184.986	300.158	115.171	62,3%	0,9%
Paper and pulp	1.302.969	1.417.832	114.863	8,8%	4,1%
Machinery and spare parts	1.686.082	1.936.607	250.525	14,9%	5,5%
Other cargo by type	2.675.041	3.186.593	511.552	19,1%	9,1%
Vehicles and transport parts	6.489.985	7.264.093	774.108	11,9%	20,8%
Automobiles and parts	1.022.896	999.999	-22.897	-2,2%	2,9%
Tare of platform and wagons (Ro-Ro)	2.173.783	2.223.928	50.145	2,3%	6,4%
Tare of containers	3.293.306	4.040.166	746.860	22,7%	11,6%

GOODS TRAFFIC

Goods by classification 4.3.7.

Ranking of goods (tonnes)

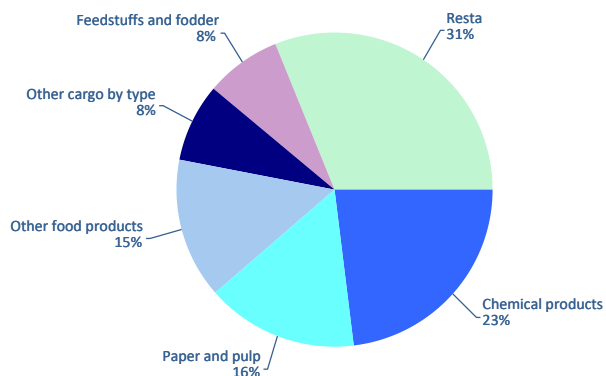


GOODS TRAFFIC

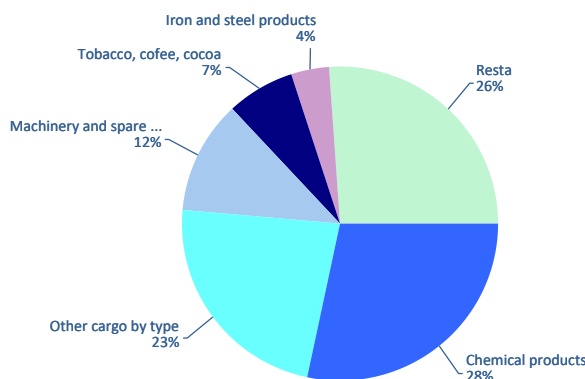
Containerized goods by classification 4.3.7. (Tares & transits not included)

Containerized goods classification	Loaded			Unloaded			Total monthly accumulated		
	2023	2024	%	2023	2024	%	2023	2024	%
Total tonnes (tares & transits not included)	3.966.083	4.036.797	1,8%	2.972.873	3.047.777	2,5%	6.938.955	7.084.574	2,1%
Chemical products	791.002	932.573	17,9%	781.866	865.692	10,7%	1.572.868	1.798.265	14,3%
Other cargo by type	324.041	323.473	-0,2%	654.694	699.192	6,8%	978.736	1.022.666	4,5%
Paper and pulp	659.554	628.339	-4,7%	80.510	108.649	35,0%	740.064	736.988	-0,4%
Other food products	625.439	585.469	-6,4%	53.360	30.155	-43,5%	678.799	615.624	-9,3%
Machinery and spare parts	240.814	229.092	-4,9%	405.474	356.852	-12,0%	646.288	585.944	-9,3%
Feedstuffs and fodder	304.350	315.592	3,7%	24.773	48.518	95,9%	329.123	364.110	10,6%
Other construction materials	137.839	147.148	6,8%	118.114	107.988	-8,6%	255.954	255.136	-0,3%
Tobacco, cofee, cocoa	39.685	40.257	1,4%	182.358	208.962	14,6%	222.043	249.219	12,2%
Wines, beverages, spirits and derivatives	202.991	194.081	-4,4%	19.403	20.468	5,5%	222.395	214.549	-3,5%
Iron and steel products	91.286	84.326	-7,6%	137.154	124.651	-9,1%	228.439	208.978	-8,5%
Automobiles and parts	69.473	63.680	-8,3%	102.714	113.715	10,7%	172.187	177.395	3,0%
Other minerals and metallic waste	96.187	113.197	17,7%	12.123	14.620	20,6%	108.310	127.817	18,0%
Other metallurgical products	46.974	39.511	-15,9%	85.021	70.465	-17,1%	131.995	109.976	-16,7%
Other non-metallic minerals	52.538	52.068	-0,9%	38.521	42.325	9,9%	91.059	94.394	3,7%
Oils and fats	70.292	69.548	-1,1%	21.711	17.839	-17,8%	92.003	87.386	-5,0%
Fruits, vegetables, pulses	15.379	14.159	-7,9%	77.639	61.316	-21,0%	93.018	75.475	-18,9%
Canned goods	37.561	33.714	-10,2%	44.229	37.104	-16,1%	81.790	70.818	-13,4%
Biofuel	47.487	54.737	15,3%	13.888	14.309	3,0%	61.376	69.047	12,5%
Cereals and flours	29.836	23.535	-21,1%	18.349	19.626	7,0%	48.185	43.162	-10,4%
Natural/artificial fertilizer	21.061	23.292	10,6%	26.808	10.542	-60,7%	47.869	33.833	-29,3%
Scrap iron	9.723	13.755	41,5%	12.726	14.270	12,1%	22.449	28.025	24,8%
Frozen fish	4.339	1.000	-76,9%	21.273	22.237	4,5%	25.612	23.237	-9,3%
Other petroleum products	9.820	11.744	19,6%	7.404	7.209	-2,6%	17.225	18.954	10,0%
Timber	5.965	6.103	2,3%	11.961	12.036	0,6%	17.925	18.138	1,2%
Common salt	14.872	16.063	8,0%	1.183	940	-20,5%	16.055	17.003	5,9%
Coal	1.597	1.447	-9,3%	15.114	9.206	-39,1%	16.711	10.654	-36,2%
Fuel oil	3.557	3.710	4,3%	2.321	3.771	62,5%	5.878	7.481	27,3%
Cement and clinker	7.490	6.042	-19,3%	24	28	16,2%	7.515	6.070	-19,2%
Petroleum fuel gasses	3.158	4.862	53,9%	423	243	-42,5%	3.581	5.105	42,5%
Asphalt	1.560	4.012	157,1%	0	20		1.560	4.032	158,4%
Soya bean	0	7		427	3.474	714,4%	427	3.481	716,1%
Potashes	34	88	159,5%	971	1.159	19,3%	1.005	1.247	24,1%
Crude oil	11	28	161,5%	22	170	672,4%	33	198	506,7%
Petrol	0	36		0	22		0	58	
Phosphates	66	48	-28,5%	0	0		66	48	-28,5%
Diesel oils	73	36	-50,7%	0	0		73	36	-50,7%
Iron ore	25	25	3,3%	312	2	-99,2%	337	28	-91,7%
Natural gas	2	0		0	0		2	0	

Distribution of main goods Loaded 2024



Distribution of main goods Unloaded 2024

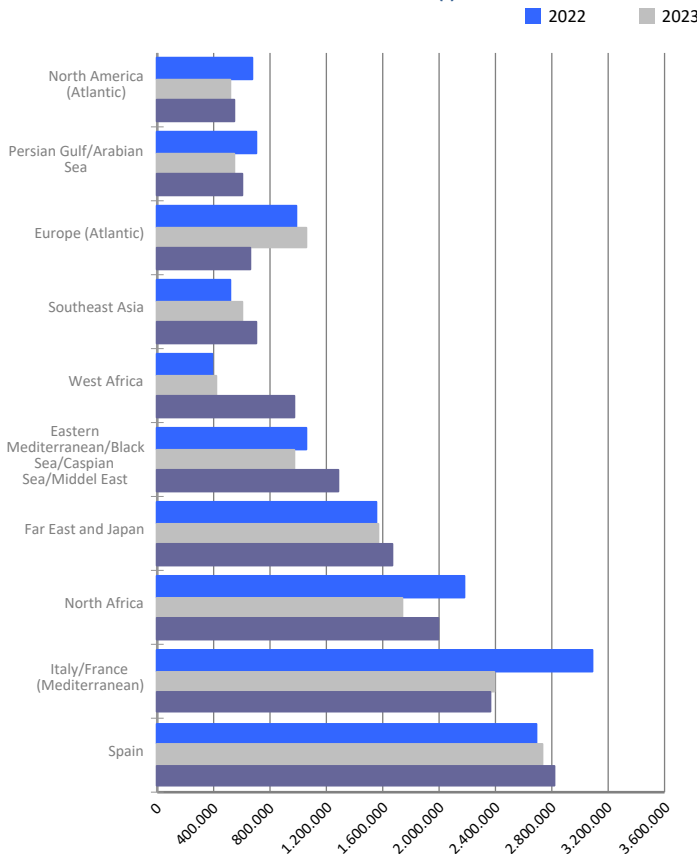


MARITIME TRAFFIC BY ORIGIN/DESTINATION

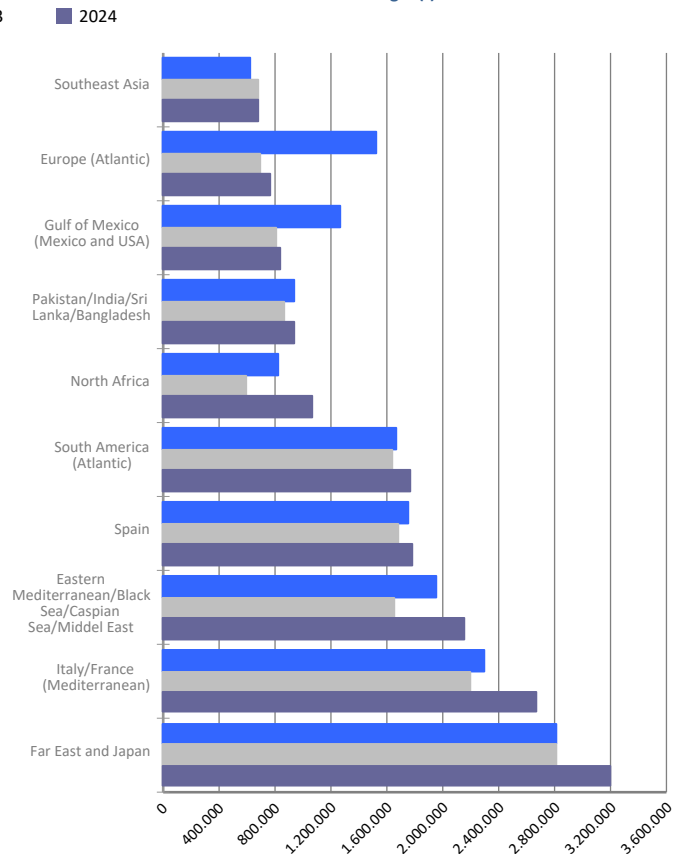
Geographical areas. Tonnes

Geographical areas	Monthly accumulated				% of total accum. 2024
	2023	2024	Diff. 24-23	%	
Tonnes	31.677.909	34.939.165	3.261.256	10,3%	100%
Italy/France (Mediterranean)	4.583.330	5.039.501	456.171	10,0%	14,4%
Far East and Japan	4.385.843	4.862.318	476.475	10,9%	13,9%
Spain	4.405.385	4.608.354	202.970	4,6%	13,2%
Eastern Mediterranean/Black Sea/Caspian Sea/Middel	2.623.298	3.445.660	822.361	31,3%	9,9%
North Africa	2.336.352	3.070.172	733.819	31,4%	8,8%
South America (Atlantic)	1.872.578	2.036.499	163.921	8,8%	5,8%
Europe (Atlantic)	1.755.422	1.422.570	-332.851	-19,0%	4,1%
Pakistan/India/Sri Lanka/Bangladesh	1.276.675	1.408.935	132.260	10,4%	4,0%
West Africa	839.440	1.399.485	560.045	66,7%	4,0%
Southeast Asia	1.293.264	1.385.398	92.134	7,1%	4,0%
Gulf of Mexico (Mexico and USA)	1.253.757	1.248.642	-5.115	-0,4%	3,6%
Persian Gulf/Arabian Sea	1.835.272	1.193.855	-641.417	-34,9%	3,4%
Red Sea	476.363	855.333	378.970	79,6%	2,4%
North America (Atlantic)	756.549	846.625	90.075	11,9%	2,4%
Central America and Caribbean	584.516	602.124	17.609	3,0%	1,7%
Unknown area (Tare of empty containers)	238.660	392.738	154.078	64,6%	1,1%
Canada (Atlantic) and Great Lakes	564.852	313.632	-251.219	-44,5%	0,9%
South-Eastern Africa/Indian Ocean	193.977	310.479	116.501	60,1%	0,9%
South America (Pacific)	243.033	264.580	21.548	8,9%	0,8%
North America (Pacific)	46.478	116.270	69.792	150,2%	0,3%
Australia, New Zealand/Pacific Islands	112.865	115.994	3.129	2,8%	0,3%

Main areas of destination (t)



Main areas of origin (t)

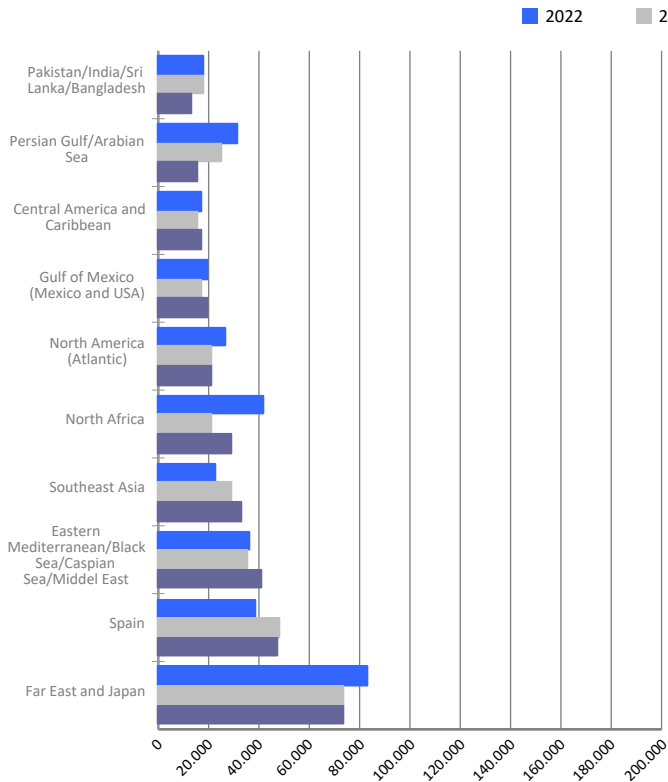


MARITIME TRAFFIC BY ORIGIN/DESTINATION

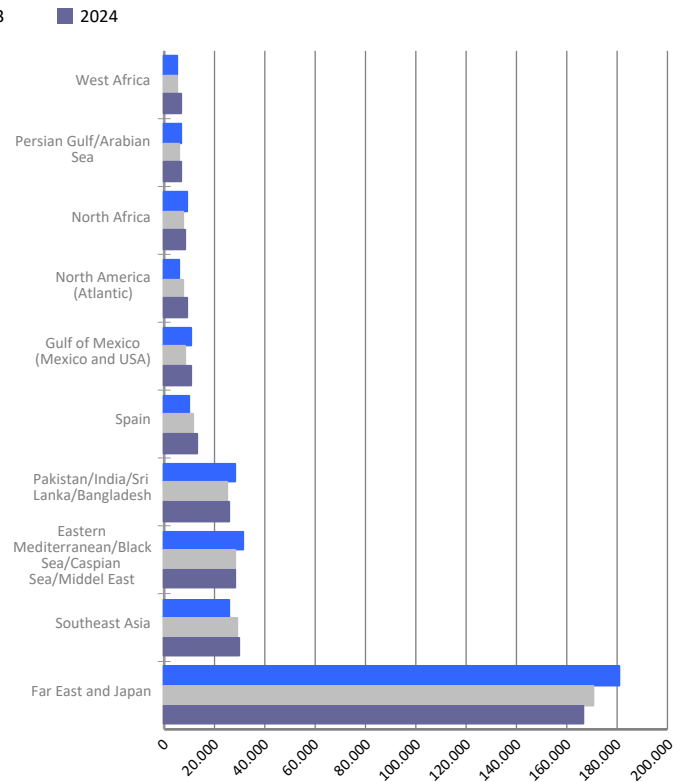
Geographical areas. Full TEU non transit

Geographical areas	Monthly accumulated				% of total accum. 2024
	2023	2024	Diff. 24-23	%	
Full TEU non transit	707.528	716.117	8.589	1,2%	100%
Far East and Japan	244.033	240.857	-3.176	-1,3%	33,6%
Eastern Mediterranean/Black Sea/Caspian Sea/Middel	63.820	69.790	5.970	9,4%	9,7%
Southeast Asia	58.755	62.495	3.740	6,4%	8,7%
Spain	59.947	60.107	160	0,3%	8,4%
Pakistan/India/Sri Lanka/Bangladesh	43.090	39.212	-3.878	-9,0%	5,5%
North Africa	29.140	37.583	8.444	29,0%	5,2%
North America (Atlantic)	28.784	30.047	1.263	4,4%	4,2%
Gulf of Mexico (Mexico and USA)	25.886	29.911	4.025	15,5%	4,2%
Persian Gulf/Arabian Sea	30.622	22.021	-8.601	-28,1%	3,1%
Central America and Caribbean	19.936	20.584	648	3,3%	2,9%
South America (Atlantic)	17.282	17.508	227	1,3%	2,4%
West Africa	14.926	16.419	1.493	10,0%	2,3%
South America (Pacific)	15.558	16.184	626	4,0%	2,3%
Red Sea	15.313	15.115	-198	-1,3%	2,1%
South-Eastern Africa/Indian Ocean	12.183	12.222	39	0,3%	1,7%
Canada (Atlantic) and Great Lakes	6.860	7.223	363	5,3%	1,0%
Australia, New Zealand/Pacific Islands	5.935	5.817	-118	-2,0%	0,8%
Italy/France (Mediterranean)	9.844	5.682	-4.162	-42,3%	0,8%
North America (Pacific)	3.165	3.839	674	21,3%	0,5%
Europe (Atlantic)	2.452	3.503	1.051	42,9%	0,5%

Main areas of destination
Full TEU non transit



Main areas of origin
Full TEU non transit

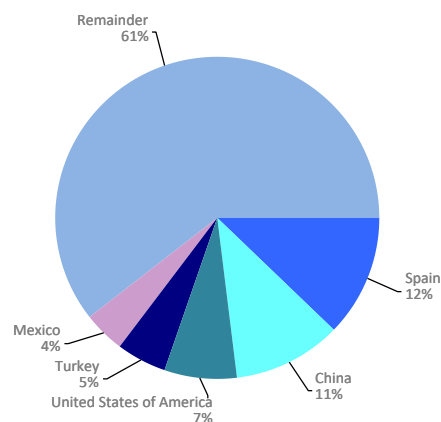


MARITIME TRAFFIC BY ORIGIN/DESTINATION

Ranking countries. Full TEU non transit

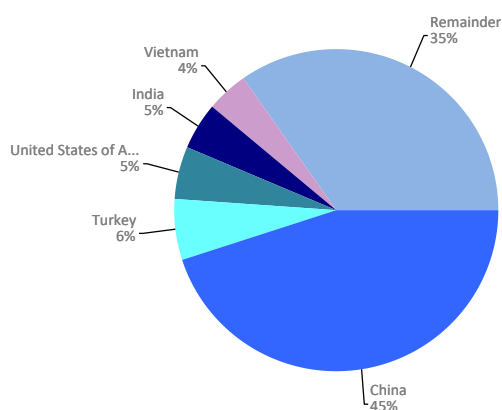
Loaded	Full TEU	% 24-23	% a/packaging
Spain	47.229	-2,0%	12,3%
China	41.732	2,2%	10,8%
United States of America	28.038	2,1%	7,3%
Turkey	18.776	13,2%	4,9%
Mexico	16.295	13,6%	4,2%
Morocco	16.278	50,4%	4,2%
Japan	12.688	-4,1%	3,3%
India	10.236	-32,1%	2,7%
United Arab Emirates	9.859	-40,6%	2,6%
Malaysia	9.534	0,8%	2,5%
Saudi Arabia	9.482	-12,1%	2,5%
Vietnam	9.215	46,1%	2,4%
Korea (South)	8.361	-6,4%	2,2%
Egypt	8.084	37,0%	2,1%
Israel	8.008	31,9%	2,1%
Remainder	131.533	0,7%	34,1%
TOTAL	385.346	1,1%	100%

Main countries. Loaded



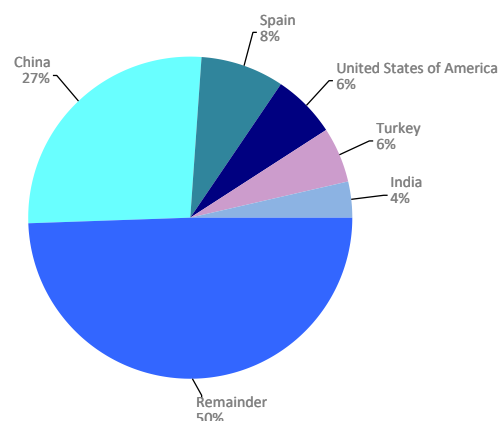
Unloaded	Full TEU	% 24-23	% a/packaging
China	148.836	-0,8%	45,0%
Turkey	20.630	4,0%	6,2%
United States of America	16.936	17,7%	5,1%
India	15.799	8,7%	4,8%
Vietnam	13.275	-3,4%	4,0%
Spain	12.878	9,6%	3,9%
Korea (South)	10.865	-11,7%	3,3%
Saudi Arabia	6.634	27,4%	2,0%
Egypt	6.300	3,1%	1,9%
Thailand	5.200	36,9%	1,6%
Bangladesh	4.929	-22,7%	1,5%
Greece	4.654	1,2%	1,4%
Brazil	4.392	23,5%	1,3%
Mexico	4.127	22,9%	1,2%
Indonesia	3.692	-23,0%	1,1%
Remainder	51.628	-0,5%	15,6%
TOTAL	330.771	1,4%	100%

Main countries. Unloaded



Total	Full TEU	% 24-23	% a/packaging
China	190.568	-0,2%	26,6%
Spain	60.107	0,3%	8,4%
United States of America	44.974	7,5%	6,3%
Turkey	39.405	8,2%	5,5%
India	26.035	-12,1%	3,6%
Vietnam	22.490	12,2%	3,1%
Mexico	20.422	15,4%	2,9%
Korea (South)	19.226	-9,5%	2,7%
Morocco	17.613	48,0%	2,5%
Saudi Arabia	16.116	0,8%	2,3%
Japan	15.821	-5,6%	2,2%
Egypt	14.383	19,7%	2,0%
Greece	12.360	9,7%	1,7%
Malaysia	11.653	-0,7%	1,6%
United Arab Emirates	11.465	-37,5%	1,6%
Remainder	193.481	0,9%	27,0%
TOTAL	716.117	1,2%	100%

Main countries. Total



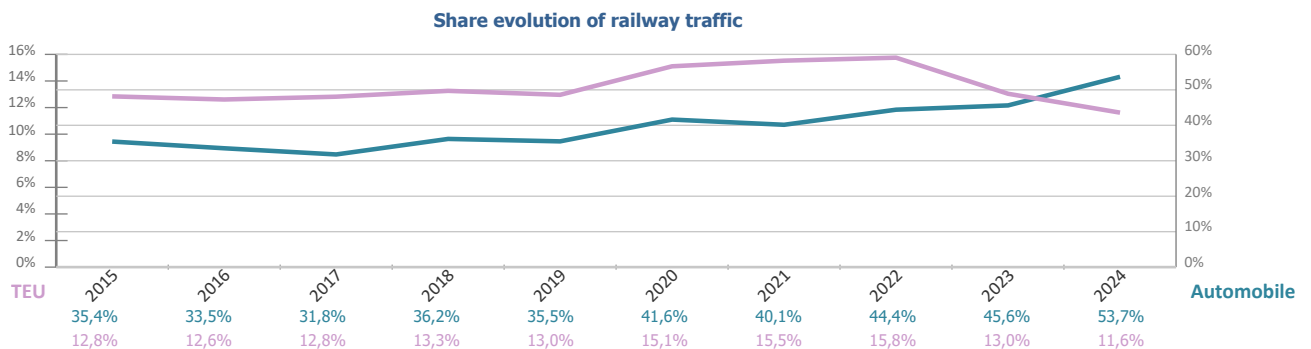
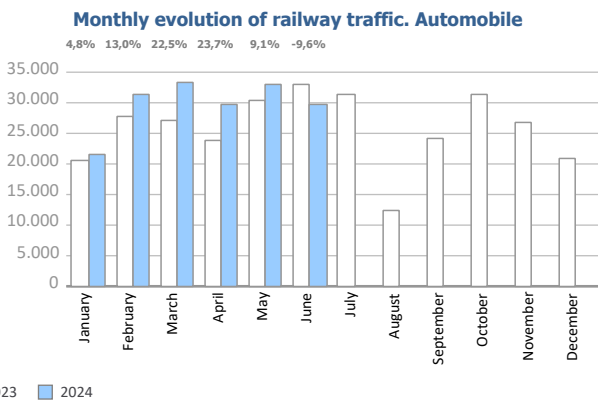
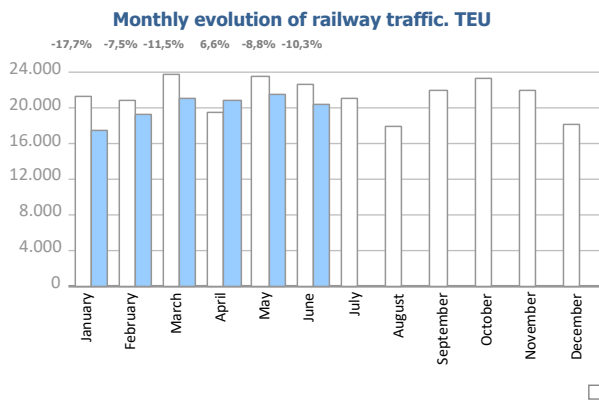
RAILWAY TRAFFIC

Monthly evolution of railway traffic. TEU

Monthly evolution of railway traffic	TEU 2023			TEU 2024			%		% of total port traffic 2024
	Loaded	Unloaded	Total	Loaded	Unloaded	Total	Monthly	Accumulated	
January	10.946	10.351	21.297	7.901	9.633	17.534	-17,7%	-17,7%	11,4%
February	10.012	10.850	20.862	8.751	10.545	19.296	-7,5%	-12,6%	12,2%
March	11.720	12.120	23.840	9.664	11.438	21.102	-11,5%	-12,2%	11,1%
April	9.632	9.846	19.478	10.070	10.684	20.754	6,6%	-7,9%	12,3%
May	12.232	11.299	23.531	10.133	11.320	21.453	-8,8%	-8,1%	11,2%
June	11.297	11.397	22.694	10.383	9.972	20.355	-10,3%	-8,5%	11,6%
July	10.049	10.979	21.028						
August	8.856	9.030	17.886						
September	10.815	11.129	21.944						
October	11.031	12.246	23.277						
November	10.067	11.795	21.862						
December	8.192	9.931	18.122						
Total	124.847	130.971	255.818	56.902	63.592	120.494			11,6%

Monthly evolution of railway traffic. Automobile

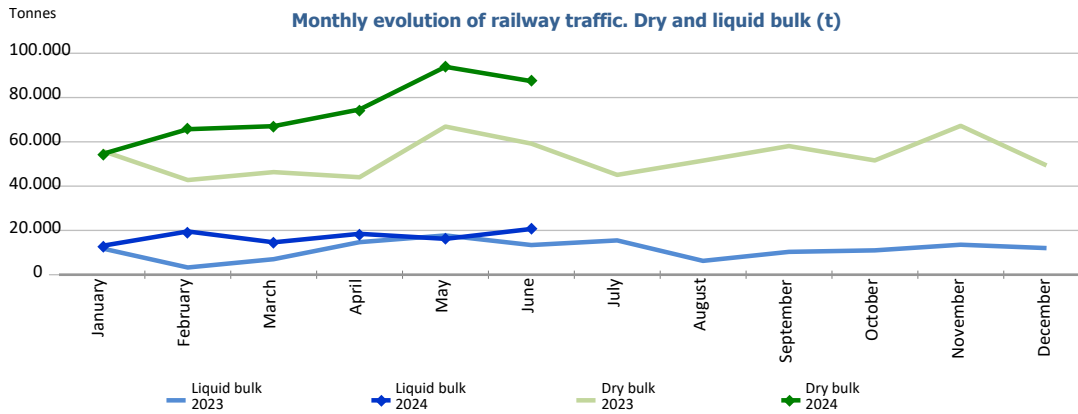
Monthly evolution of railway traffic	Automobile 2023			Automobile 2024			%		% of total port traffic 2024
	Loaded	Unloaded	Total	Loaded	Unloaded	Total	Monthly	Accumulated	
January	4.150	16.267	20.417	2.696	18.708	21.404	4,8%	4,8%	52,4%
February	5.096	22.553	27.649	4.150	27.099	31.249	13,0%	9,5%	61,5%
March	3.567	23.677	27.244	4.458	28.926	33.384	22,5%	14,2%	51,9%
April	4.515	19.415	23.930	3.573	26.030	29.603	23,7%	16,5%	55,4%
May	5.929	24.358	30.287	4.399	28.658	33.057	9,1%	14,8%	50,7%
June	5.878	27.021	32.899	4.552	25.180	29.732	-9,6%	9,9%	51,4%
July	6.807	24.450	31.257						
August	1.982	10.394	12.376						
September	5.584	18.633	24.217						
October	6.117	25.138	31.255						
November	5.350	21.525	26.875						
December	3.150	17.854	21.004						
Total	58.125	251.285	309.410	23.828	154.601	178.429			53,7%



RAILWAY TRAFFIC

Monthly evolution of railway traffic. Dry and liquid bulk. Tonnes

Monthly evolution of railway traffic	Tonnes 2023			Tonnes 2024			%	
	Dry bulk	Liquid bulk	Total	Dry bulk	Liquid bulk	Total	Monthly	Accumulated
January	55.964	11.888	67.852	54.457	13.024	67.481	-0,5%	-0,5%
February	42.746	3.263	46.009	65.710	19.534	85.244	85,3%	34,1%
March	46.334	7.014	53.348	67.073	14.630	81.703	53,2%	40,2%
April	44.027	14.701	58.728	74.604	18.473	93.077	58,5%	45,0%
May	66.894	17.738	84.632	93.873	16.191	110.064	30,1%	40,9%
June	59.200	13.398	72.598	87.416	20.649	108.065	48,9%	42,4%
July	45.081	15.485	60.566					
August	51.511	6.251	57.762					
September	58.090	10.320	68.410					
October	51.617	10.995	62.612					
November	67.236	13.547	80.783					
December	49.345	12.016	61.361					
Total	638.045	136.616	774.661	443.133	102.501	545.634		



Railway traffic.

Railway gauge traffic (u)	Monthly accumulated		%	% of accumulated total 2024
	2023	2024		
Iberian gauge	3.687	3.635	-1,4%	61,1%
UIC	216	457	111,6%	7,7%
FGC	1.429	1.862	30,3%	31,3%
Total	5.332	5.954	11,7%	100%

