

Port of Barcelona traffic statistics

Accumulated data April 2024

Statistics Service

Index

Traffic indicators

Total traffic	3
Main indicators	4
Breakdown of total traffic	5
Breakdown of traffic in transit	6
Monthly evolution of traffic	7

Container traffic

TEU evolution	8
Container traffic (TEU)	9

Passenger traffic

Passenger traffic	10
Passenger classification	11

Automobile traffic

Automobile traffic	12
--------------------	----

Short Sea Shipping traffic (SSS)

SSS Goods classification	13
SSS General cargo and Motorways of the sea (MoS)	14
SSS Ranking countries	15

Vessel traffic

Vessel traffic	16
----------------	----

Goods traffic

Mode of packaging and navigation	17
Goods by classification 4.3.7.	18
Goods ranking	19
Containerized goods by classification 4.3.7.	20

Maritime traffic by origin/destination

Geographical areas. Tonnes	21
Geographical areas. Full TEU non transit	22
Ranqing countries. Full TEU non transit	23

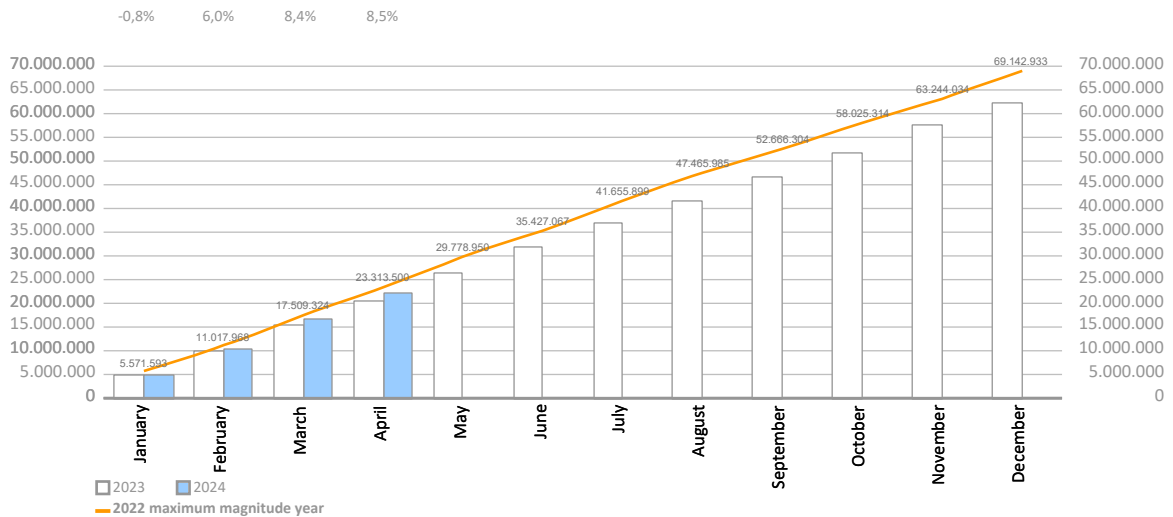
Railway traffic

Evolution of railway traffic (TEU and automobile)	24
Evolution of railway traffic (Solid and liquid bulk)	25
Railway gauge traffic	25

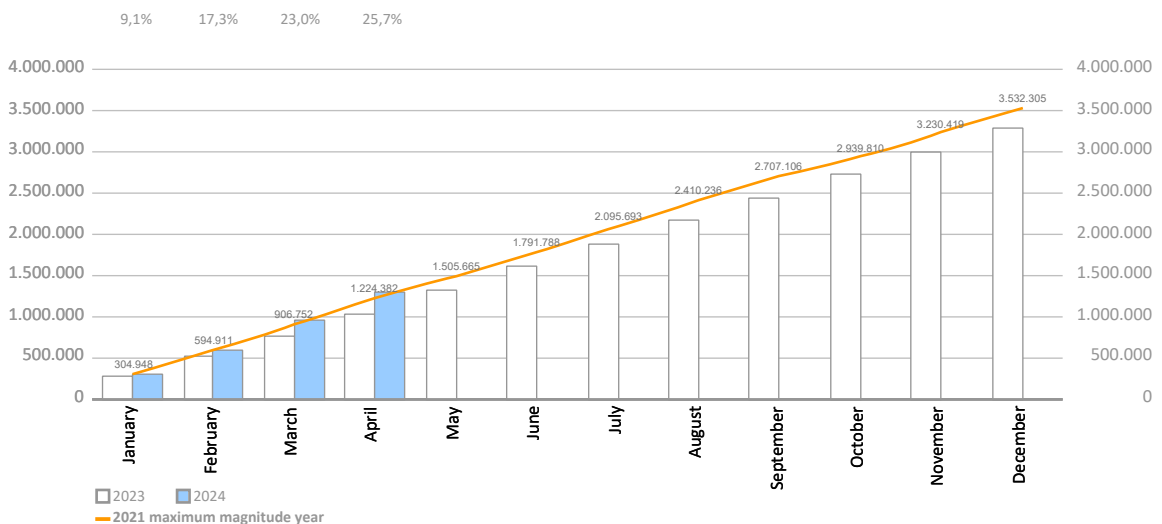
TRAFFIC INDICATORS

Total traffic	Monthly accumulated				% 24-23 accum. March	% 24-23 accum. February	Total traffic 2023
	2023	2024	Diff. 24-23	%			
Total throughput (tonnes)	20.566.910	22.321.796	1.754.885	8,5%	8,4%	6,0%	62.413.902
Supplies	492.301	471.827	-20.474	-4,2%	-5,6%	-7,9%	1.599.592
Fishing	428	692	265	61,9%	43,1%	63,2%	1.544
TOTAL TRAFFIC (tonnes)	21.059.639	22.794.315	1.734.676	8,2%	8,1%	5,7%	64.015.038
TEU	1.026.763	1.290.644	263.880	25,7%	23,0%	17,3%	3.280.140
UTI	130.655	137.297	6.643	5,1%	3,7%	10,2%	413.945
Automobiles (units)	266.789	246.333	-20.456	-7,7%	-6,3%	-7,8%	790.318
Vessels (units)	2.666	2.642	-24	-0,9%	-0,3%	-0,2%	8.766
Railway traffic (units)	3.393	3.800	407	12,0%	7,7%	6,5%	10.439
Cruise passengers (units)	559.512	597.047	37.535	6,7%	9,4%	8,0%	3.569.125
Ferry passengers (units)	357.688	366.512	8.824	2,5%	10,8%	-0,1%	1.735.495
Automobile passengers (units)	95.795	100.587	4.792	5,0%	12,2%	4,0%	515.293

Monthly evolution of the accumulated traffic of goods. Tonnes



Monthly evolution of the accumulated traffic of goods. TEU



TRAFFIC INDICATORS

Main indicators	Monthly accumulated				Last 12 months	Total traffic 2023	% 12 months-2023
	2023	2024	Diff. 24-23	%			
Goods indicators by navigation and operation (tonnes)							
Navigation (t)	20.566.910	22.321.796	1.754.885	8,5%	64.168.788	62.413.902	2,8%
Domestic	2.612.647	2.600.989	-11.658	-0,4%	8.011.906	8.023.564	-0,1%
Foreign	17.954.263	19.720.807	1.766.543	9,8%	56.156.882	54.390.338	3,2%
Operation (t)	20.566.910	22.321.796	1.754.885	8,5%	64.168.788	62.413.902	2,8%
Loaded	6.471.671	6.225.967	-245.704	-3,8%	18.916.534	19.162.238	-1,3%
Unloaded	7.532.557	7.062.313	-470.243	-6,2%	22.188.080	22.658.323	-2,1%
Transit	6.562.682	9.033.516	2.470.833	37,6%	23.064.174	20.593.341	12,0%
Goods indicators by main units							
Containers (TEU)	1.026.763	1.290.644	263.880	25,7%	3.544.021	3.280.140	8,0%
TEU O/D	623.559	668.474	44.915	7,2%	2.005.189	1.960.274	2,3%
TEU transit	403.205	622.170	218.965	54,3%	1.538.832	1.319.867	16,6%
Containerized tonnes	10.733.538	13.141.441	2.407.902	22,4%	35.932.943	33.525.041	7,2%
Level of containerization	74,86%	77,73%			75,94%	74,92%	
Passengers (u)	917.200	963.559	46.359	5,1%	5.350.979	5.304.620	0,9%
Regular line	357.688	366.512	8.824	2,5%	1.744.319	1.735.495	0,5%
Pleasure cruises	559.512	597.047	37.535	6,7%	3.606.660	3.569.125	1,1%
Automobiles (u)	266.789	246.333	-20.456	-7,7%	769.862	790.318	-2,6%
Loaded	134.405	148.316	13.911	10,4%	426.343	412.432	3,4%
Unloaded	91.336	55.805	-35.531	-38,9%	220.051	255.582	-13,9%
Transit	41.048	42.212	1.164	2,8%	123.468	122.304	1,0%
Vessels (u)	2.666	2.642	-24	-0,9%	8.742	8.766	-0,3%
Number of calls	2.666	2.642	-24	-0,9%	8.742	8.766	-0,3%
GT	104.565.962	105.659.684	1.093.722	1,0%	375.394.438	374.300.716	0,3%
Average tonnes by vessel	7.715	8.449	734	9,5%	7.340	7.120	3,1%
UTI	130.655	137.297	6.643	5,1%	420.587	413.945	1,6%
Domestic	79.700	81.823	2.123	2,7%	261.619	259.496	0,8%
% Full	62,0%	63,3%			62,3%	61,9%	
Foreign	50.955	55.474	4.520	8,9%	158.968	154.449	2,9%
% Full	92,8%	91,2%			91,0%	91,5%	

TRAFFIC INDICATORS

Breakdown of total traffic (tonnes)	Monthly accumulated				% 24-23 accum. March	% 24-23 accum. February	% of total accum. 2024
	2023	2024	Diff. 24-23	%			
Goods indicators by type of packaging (t)	20.566.910	22.321.796	1.754.885	8,5%	8,4%	6,0%	100%
Liquid bulk	4.594.803	4.017.194	-577.609	-12,6%	-8,0%	-13,7%	18,0%
Hydrocarbons	3.259.955	2.612.757	-647.198	-19,9%	-14,2%	-16,4%	11,7%
Petrol	865.042	886.690	21.648	2,5%	2,3%	-9,0%	4,0%
Diesel oils	716.913	780.056	63.143	8,8%	14,6%	-36,4%	3,5%
Natural gas	1.254.789	551.992	-702.798	-56,0%	-46,0%	-17,6%	2,5%
Fuel oil	348.917	302.275	-46.642	-13,4%	-5,2%	-16,6%	1,4%
Other petroleum products	65.200	84.232	19.032	29,2%	27,1%	308,9%	0,4%
Remainder	9.094	7.512	-1.581	-17,4%	15,5%	0,6%	0,0%
Other liquid bulk	1.334.848	1.404.437	69.589	5,2%	6,3%	-7,7%	6,3%
Chemical products	495.133	693.978	198.844	40,2%	54,2%	55,4%	3,1%
Biofuel	497.957	379.520	-118.436	-23,8%	-28,8%	-28,0%	1,7%
Oils and fats	308.747	278.782	-29.965	-9,7%	-9,2%	-41,5%	1,2%
Other cargo by type	0	25.753	25.753	0,0%	0,0%	0,0%	0,1%
Natural/artificial fertilizer	27.094	23.257	-3.837	-14,2%	44,7%	247,1%	0,1%
Remainder	5.917	3.146	-2.770	-46,8%			0,0%
Dry bulk	1.634.337	1.396.992	-237.345	-14,5%	-15,5%	-12,3%	6,3%
Special installation	1.530.139	1.308.882	-221.257	-14,5%	-16,1%	-12,9%	5,9%
Soya bean	533.191	531.401	-1.791	-0,3%	-6,2%	-1,9%	2,4%
Cereals and flours	235.280	270.764	35.485	15,1%	20,0%	13,1%	1,2%
Cement and clinker	390.880	204.522	-186.358	-47,7%	-52,8%	-51,2%	0,9%
Potashes	142.345	183.240	40.895	28,7%	9,7%	-4,7%	0,8%
Common salt	221.193	105.252	-115.941	-52,4%	-49,8%	-34,3%	0,5%
Remainder	7.250	13.703	6.453	89,0%	383,7%		0,1%
Without special installation	104.198	88.110	-16.088	-15,4%	-7,9%	-2,8%	0,4%
Scrap iron	69.844	57.065	-12.778	-18,3%	-9,1%	-17,0%	0,3%
Other non-metallic minerals	18.791	11.600	-7.191	-38,3%	-60,1%	13,6%	0,1%
Other minerals and metallic waste	5.800	8.400	2.600	44,8%	0,0%	0,0%	0,0%
Chemical products	6.650	8.345	1.695	25,5%	25,5%	18,7%	0,0%
Common salt	3.113	2.700	-413	-13,3%	-13,3%	0,0%	0,0%
Remainder	0	0	0				0,0%
General cargo	14.337.771	16.907.609	2.569.839	17,9%	16,2%	13,9%	75,7%
Containerized	10.733.538	13.141.441	2.407.902	22,4%	20,5%	16,0%	58,9%
Tare of containers	2.103.731	2.627.599	523.868	24,9%	22,3%	16,7%	11,8%
Chemical products	1.650.143	2.016.192	366.049	22,2%	16,3%	10,7%	9,0%
Other cargo by type	1.095.203	1.400.967	305.764	27,9%	21,6%	11,4%	6,3%
Other food products	1.098.168	1.278.129	179.961	16,4%	18,1%	17,4%	5,7%
Paper and pulp	783.330	954.546	171.216	21,9%	23,0%	19,6%	4,3%
Remainder	4.002.964	4.864.008	861.044	21,5%	21,2%	18,0%	21,8%
Non-containerized	3.604.232	3.766.169	161.936	4,5%	3,0%	7,2%	16,9%
Tare of platform and wagons (Ro-Ro)	1.341.370	1.390.215	48.845	3,6%	1,8%	7,8%	6,2%
Other cargo by type	615.021	637.268	22.247	3,6%	2,1%	4,2%	2,9%
Machinery and spare parts	364.921	402.014	37.093	10,2%	7,0%	13,4%	1,8%
Automobiles and parts	451.990	394.400	-57.591	-12,7%	-11,9%	-12,1%	1,8%
Iron and steel products	138.719	172.055	33.336	24,0%	20,9%	14,8%	0,8%
Remainder	692.211	770.218	78.007	11,3%	10,4%	16,8%	3,5%

TRAFFIC INDICATORS

Breakdown of traffic in transit (tonnes)	Monthly accumulated				% 24-23 accum. March	% 24-23 accum. February	% of total accum. 2024
	2023	2024	Diff. 24-23	%			
Goods indicators by type of packaging (t)	6.562.682	9.033.516	2.470.833	37,6%	39,6%	30,2%	100%
Liquid bulk	1.455.241	1.611.283	156.042	10,7%	18,2%	-7,0%	17,8%
Hydrocarbons	885.873	930.757	44.884	5,1%	16,3%	-20,0%	10,3%
Petrol	456.935	509.713	52.779	11,6%	12,6%	-10,1%	5,6%
Fuel oil	253.082	214.229	-38.852	-15,4%	0,2%	-14,5%	2,4%
Diesel oils	175.856	193.306	17.449	9,9%	36,9%	-64,8%	2,1%
Other petroleum products	0	13.508	13.508				0,1%
Remainder	0	0	0				0,0%
Other liquid bulk	569.368	680.526	111.158	19,5%	21,4%	18,9%	7,5%
Chemical products	252.245	408.659	156.414	62,0%	84,3%	109,3%	4,5%
Biofuel	298.036	251.103	-46.933	-15,7%	-14,7%	-5,0%	2,8%
Other cargo by type	0	11.397	11.397				0,1%
Oils and fats	19.087	9.366	-9.721	-50,9%	-80,4%		0,1%
Remainder	0	0	0				0,0%
Dry bulk	0	0	0				0,0%
Special installation	0	0	0				0,0%
Remainder	0	0	0				0,0%
Without special installation	0	0	0				0,0%
Remainder	0	0	0				0,0%
General cargo	5.107.442	7.422.233	2.314.792	45,3%	45,3%	39,9%	82,2%
Containerized	4.951.320	7.195.374	2.244.054	45,3%	45,1%	39,4%	79,7%
Tare of containers	835.649	1.274.368	438.718	52,5%	48,1%	39,7%	14,1%
Other food products	628.518	865.012	236.494	37,6%	44,1%	40,9%	9,6%
Chemical products	640.463	860.270	219.808	34,3%	25,5%	10,8%	9,5%
Other cargo by type	474.023	747.446	273.424	57,7%	48,7%	34,9%	8,3%
Other construction materials	318.114	488.224	170.111	53,5%	50,5%	33,8%	5,4%
Remainder	2.054.553	2.960.054	905.500	44,1%	48,6%	50,2%	32,8%
Non-containerized	156.122	226.859	70.737	45,3%	50,7%	56,0%	2,5%
Automobiles and parts	67.804	75.346	7.542	11,1%	6,8%	37,9%	0,8%
Tare of platform and wagons (Ro-Ro)	21.080	37.939	16.859	80,0%	88,1%	69,1%	0,4%
Other cargo by type	24.624	30.060	5.436	22,1%	17,3%	-10,5%	0,3%
Oils and fats	3.135	27.725	24.590	784,4%	909,6%	910,4%	0,3%
Wines, beverages, spirits and derivatives	8.391	23.521	15.130	180,3%	251,8%	280,3%	0,3%
Remainder	31.089	32.269	1.180	3,8%	4,3%	-7,8%	0,4%

TRAFFIC INDICATORS

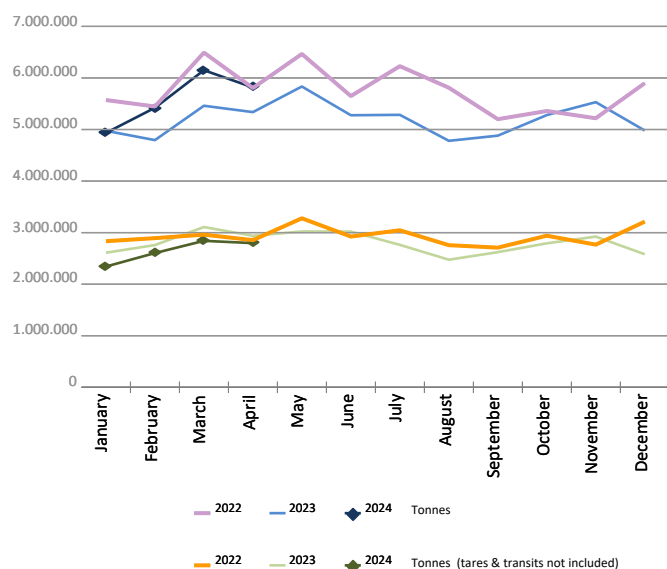
Monthly evolution of traffic. Tonnes

Monthly evolution of traffic	Total tonnes			%		Tonnes (tares & transits not included)			%	
	2023	2024	Diff. 24-23	Monthly	Accumulated	2023	2024	Diff. 24-23	Monthly	Accumulated
January	4.974.831	4.933.867	-40.964	-0,8%	-0,8%	2.610.318	2.341.823	-268.495	-10,3%	-10,3%
February	4.794.197	5.421.683	627.486	13,1%	6,0%	2.759.119	2.603.693	-155.426	-5,6%	-7,9%
March	5.460.878	6.149.831	688.953	12,6%	8,4%	3.107.624	2.840.652	-266.972	-8,6%	-8,2%
April	5.337.004	5.816.415	479.411	9,0%	8,5%	2.938.796	2.796.604	-142.191	-4,8%	-7,3%
May	5.834.016					3.022.618				
June	5.276.806					3.020.382				
July	5.284.608					2.762.705				
August	4.780.504					2.474.573				
September	4.880.699					2.621.228				
October	5.279.707					2.792.885				
November	5.530.684					2.922.799				
December	4.979.968					2.580.990				
Total	62.413.902	22.321.796				33.614.036	10.582.772			

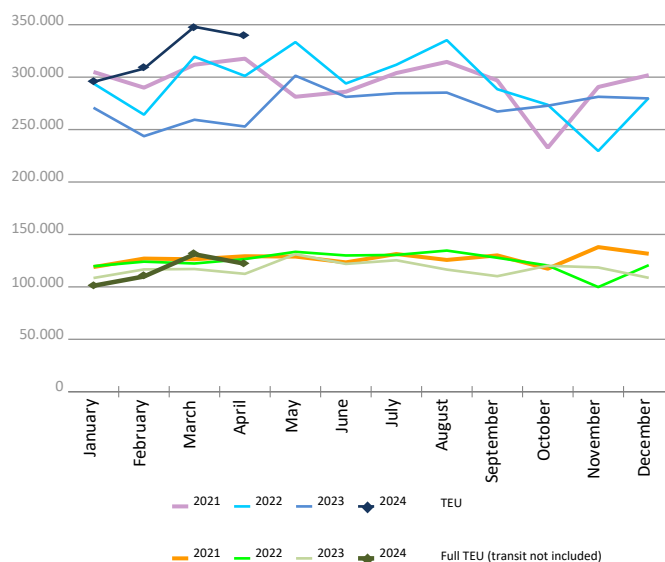
Monthly evolution of traffic. TEU

Monthly evolution of traffic	Total TEU			%		Full TEU (transit not included)			%	
	2023	2024	Diff. 24-23	Monthly	Accumulated	2023	2024	Diff. 24-23	Monthly	Accumulated
January	270.816	295.528	24.712	9,1%	9,1%	108.430	101.061	-7.369	-6,8%	-6,8%
February	243.685	308.121	64.436	26,4%	17,3%	116.640	109.884	-6.757	-5,8%	-6,3%
March	259.357	348.007	88.650	34,2%	23,0%	117.011	131.061	14.050	12,0%	-0,0%
April	252.905	338.988	86.083	34,0%	25,7%	112.397	122.044	9.646	8,6%	2,1%
May	301.370					131.146				
June	281.167					121.905				
July	284.638					125.356				
August	285.262					116.482				
September	267.204					110.162				
October	272.766					120.158				
November	281.277					118.502				
December	279.694					108.620				
Total	3.280.140	1.290.644				1.406.807	464.049			

Goods (total tonnes)



Containers (total TEU)



CONTAINER TRAFFIC

TEU evolution

Full-unloaded foreign	Full TEU			%		Full-loaded foreign	Full TEU			%	
	2023	2024	Diff. 24-23	Monthly	Accumulated		2023	2024	Diff. 24-23	Monthly	Accumulated
January	49.138	41.691	-7.447	-15,2%	-15,2%	January	51.046	49.933	-1.113	-2,2%	-2,2%
February	51.449	44.498	-6.951	-13,5%	-14,3%	February	56.052	55.500	-552	-1,0%	-1,6%
March	44.515	58.512	13.998	31,4%	-0,3%	March	60.781	61.526	745	1,2%	-0,5%
April	51.432	57.417	5.986	11,6%	2,8%	April	51.392	55.133	3.741	7,3%	1,3%
May	64.095					May	56.516				
June	53.940					June	57.195				
July	59.685					July	54.831				
August	56.638					August	50.134				
September	48.415					September	50.745				
October	52.489					October	57.844				
November	48.781					November	59.645				
December	43.001					December	55.662				
Total	623.574	202.118				Total	661.840	222.091			

Full-unloaded domestic	Full TEU			%		Full-loaded domestic	Full TEU			%	
	2023	2024	Diff. 24-23	Monthly	Accumulated		2023	2024	Diff. 24-23	Monthly	Accumulated
January	1.702	2.174	473	27,8%	27,8%	January	6.545	7.264	719	11,0%	11,0%
February	1.836	2.269	434	23,6%	25,6%	February	7.304	7.617	313	4,3%	7,4%
March	2.227	2.280	53	2,4%	16,6%	March	9.488	8.744	-744	-7,8%	1,2%
April	1.818	2.011	194	10,6%	15,2%	April	7.756	7.483	-274	-3,5%	0,0%
May	2.223					May	8.313				
June	1.938					June	8.833				
July	1.881					July	8.960				
August	1.989					August	7.722				
September	2.163					September	8.839				
October	2.164					October	7.662				
November	1.913					November	8.164				
December	1.886					December	8.072				
Total	23.737	8.734				Total	97.656	31.107			

Full - Transit	Full TEU			%		Empty	Empty TEU			%	
	2023	2024	Diff. 24-23	Monthly	Accumulated		2023	2024	Diff. 24-23	Monthly	Accumulated
January	97.136	112.121	14.985	15,4%	15,4%	January	65.251	82.346	17.096	26,2%	26,2%
February	71.919	117.901	45.982	63,9%	36,1%	February	55.126	80.336	25.210	45,7%	35,1%
March	83.590	133.571	49.981	59,8%	43,9%	March	58.757	83.376	24.619	41,9%	37,4%
April	83.957	133.616	49.660	59,1%	47,7%	April	56.551	83.329	26.778	47,4%	39,8%
May	97.489					May	72.735				
June	84.535					June	74.728				
July	93.112					July	66.171				
August	83.799					August	84.981				
September	86.284					September	70.759				
October	90.687					October	61.921				
November	86.564					November	76.211				
December	90.643					December	80.432				
Total	1.049.712	497.208				Total	823.622	329.387			

CONTAINER TRAFFIC

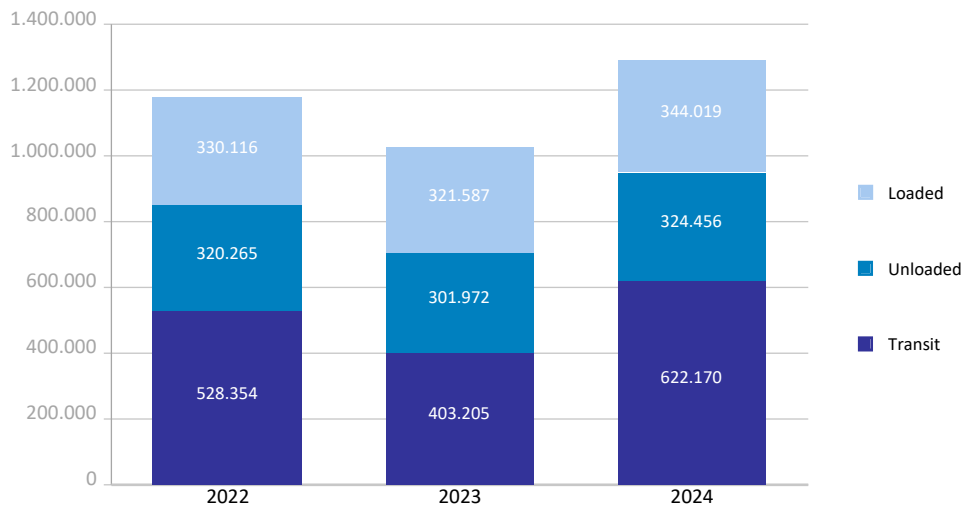
TEU

Container traffic	Monthly accumulated 2023			Monthly accumulated 2024			%
	Domestic	Foreign	Total	Domestic	Foreign	Total	
Total traffic	74.676	952.087	1.026.763	73.950	1.216.694	1.290.644	25,7%
Unloaded	40.378	475.057	515.435	38.964	618.698	657.662	27,6%
Roll On-Roll Off	8.405	4.570	12.975	7.461	4.618	12.079	-6,9%
Lift On-Lift Off	31.973	470.487	502.460	31.503	614.080	645.583	28,5%
Loaded	34.299	477.030	511.329	34.986	597.996	632.982	23,8%
Roll On-Roll Off	9.183	4.406	13.589	7.673	4.228	11.901	-12,4%
Lift On-Lift Off	25.116	472.624	497.740	27.313	593.768	621.081	24,8%

Breakdown by navigation and operation	Monthly accumulated 2023			Monthly accumulated 2024			%
	Domestic	Foreign	Total	Domestic	Foreign	Total	
Loaded	34.274	287.313	321.587	34.977	309.042	344.019	7,0%
Full	31.094	219.270	250.364	31.107	222.091	253.198	1,1%
Empty	3.180	68.043	71.223	3.870	86.951	90.821	27,5%
Unloaded	38.621	263.352	301.972	37.968	286.488	324.456	7,4%
Full	7.582	196.533	204.114	8.734	202.118	210.851	3,3%
Empty	31.039	66.819	97.858	29.235	84.370	113.605	16,1%
Transit	1.782	401.423	403.205	1.006	621.164	622.170	54,3%
Full	38	336.563	336.601	11	497.198	497.208	47,7%
Empty	1.744	64.860	66.604	995	123.967	124.962	87,6%

Total traffic	74.676	952.087	1.026.763	73.950	1.216.694	1.290.644	25,7%
Full	38.713	752.366	791.079	39.851	921.406	961.257	21,5%
Empty	35.963	199.722	235.685	34.099	295.288	329.387	39,8%
% Empty	48,2%	21,0%	23,0%	46,1%	24,3%	25,5%	
% Transit	2,4%	42,2%	39,3%	1,4%	51,1%	48,2%	

General cargo distribution by operation (TEU)

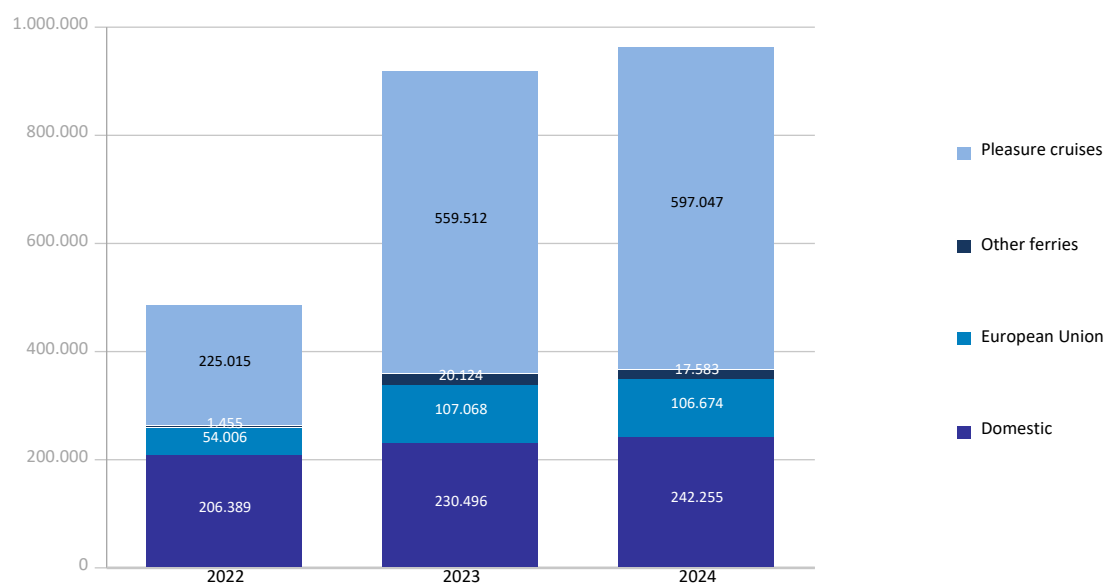


PASSENGER TRAFFIC

Total passenger traffic (units)	Monthly accumulated				% 24-23 accum. March	% 24-23 accum. February
	2023	2024	Diff. 24-23	%		
Total passengers	917.200	963.559	46.359	5,1%	10,0%	4,5%
Embarkation	307.265	333.550	26.285	8,6%	23,7%	14,7%
Disembarkation	280.347	305.946	25.599	9,1%	16,0%	16,9%
Transit	329.588	324.063	-5.525	-1,7%	-8,0%	-12,6%
Regular line ferries	357.688	366.512	8.824	2,5%	10,8%	-0,1%
Embarkation	192.344	195.900	3.556	1,8%	11,6%	-0,9%
Disembarkation	165.344	170.612	5.268	3,2%	9,8%	0,8%
Domestic	230.496	242.255	11.759	5,1%	15,0%	1,9%
Embarkation	131.344	136.702	5.358	4,1%	14,0%	1,3%
Disembarkation	99.152	105.553	6.401	6,5%	16,4%	2,8%
European Union	107.068	106.674	-394	-0,4%	6,7%	-2,7%
Embarkation	50.596	50.965	369	0,7%	12,4%	-0,1%
Disembarkation	56.472	55.709	-763	-1,4%	2,1%	-4,9%
Other ferries	20.124	17.583	-2.541	-12,6%	-13,7%	-12,1%
Embarkation	10.404	8.233	-2.171	-20,9%	-19,8%	-25,5%
Disembarkation	9.720	9.350	-370	-3,8%	-8,5%	-0,9%
Pleasure cruises	559.512	597.047	37.535	6,7%	9,4%	8,0%
Embarkation	114.921	137.650	22.729	19,8%	53,4%	54,0%
Disembarkation	115.003	135.334	20.331	17,7%	27,1%	53,2%
Transit	329.588	324.063	-5.525	-1,7%	-8,0%	-12,6%

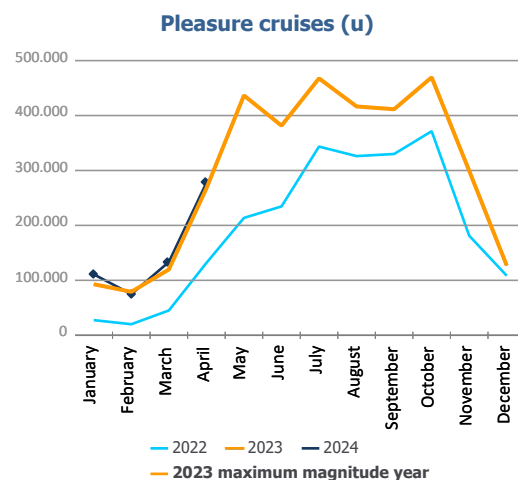
Total passenger calls (units)	Monthly accumulated				% 24-23 accum. March	% 24-23 accum. February
	2023	2024	Diff. 24-23	%		
Total number of calls	1.130	1.092	-38	-3,4%	-4,6%	-5,7%
Regular Line ferries	973	947	-26	-2,7%	-3,4%	-4,8%
Pleasure cruises	157	145	-12	-7,6%	-15,4%	-15,2%

Passenger traffic distribution (u)

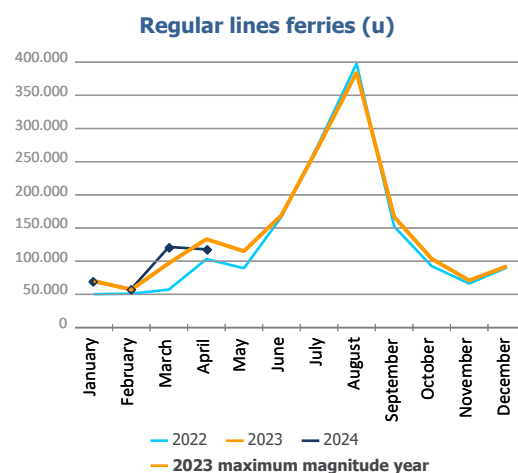


PASSENGER CLASSIFICATION

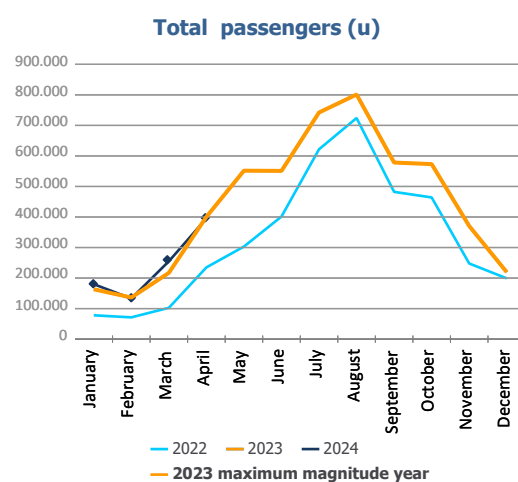
Monthly evolution of passenger traffic	Pleasure cruises			%	
	2023	2024	Diff. 24-23	Monthly	Accumulated
January	93.013	111.036	18.023	19,4%	19,4%
February	79.194	74.939	-4.255	-5,4%	8,0%
March	119.885	133.501	13.616	11,4%	9,4%
April	267.420	277.571	10.151	3,8%	6,7%
May	436.569				
June	381.587				
July	467.607				
August	416.517				
September	411.457				
October	469.510				
November	299.424				
December	126.942				
Total	3.569.125	597.047			



Monthly evolution of passenger traffic	Regular lines ferries			%	
	2023	2024	Diff. 24-23	Monthly	Accumulated
January	70.262	68.931	-1.331	-1,9%	-1,9%
February	57.059	58.227	1.168	2,0%	-0,1%
March	97.166	121.510	24.344	25,1%	10,8%
April	133.201	117.844	-15.357	-11,5%	2,5%
May	115.112				
June	169.419				
July	274.632				
August	384.652				
September	166.887				
October	103.714				
November	71.033				
December	92.358				
Total	1.735.495	366.512			



Monthly evolution of passenger traffic	Total passengers			%	
	2023	2024	Diff. 24-23	Monthly	Accumulated
January	163.275	179.967	16.692	10,2%	10,2%
February	136.253	133.166	-3.087	-2,3%	4,5%
March	217.051	255.011	37.960	17,5%	10,0%
April	400.621	395.415	-5.206	-1,3%	5,1%
May	551.681				
June	551.006				
July	742.239				
August	801.169				
September	578.344				
October	573.224				
November	370.457				
December	219.300				
Total	5.304.620	963.559			

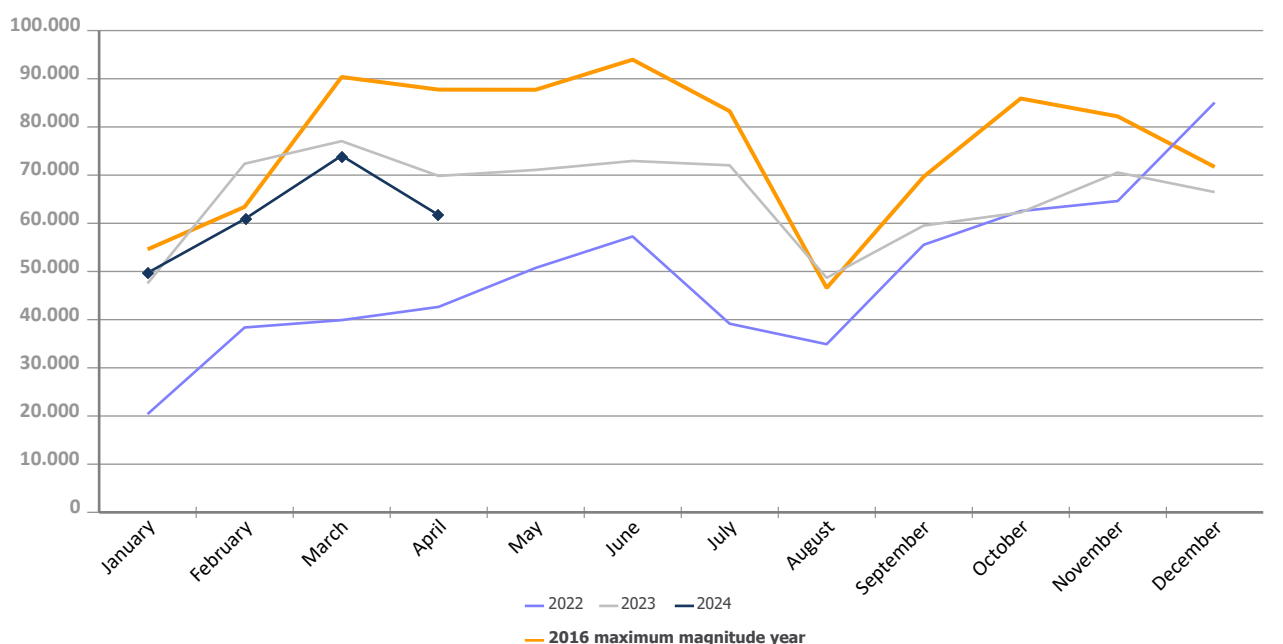


AUTOMOBILE TRAFFIC

Total automobile traffic (units)	Monthly accumulated				% 24-23 accum. March	% 24-23 accum. February
	2023	2024	Diff. 24-23	%		
Automobile traffic by navigation and operation	266.789	246.333	-20.456	-7,7%	-6,3%	-7,8%
Domestic	36.642	34.760	-1.882	-5,1%	-12,9%	-8,7%
Loaded	32.530	31.872	-658	-2,0%	-11,0%	-6,7%
Unloaded	4.092	2.888	-1.204	-29,4%	-28,0%	-21,4%
Transit	20	0	-20			
Foreign	230.147	211.573	-18.574	-8,1%	-5,2%	-7,6%
Loaded	101.875	116.444	14.569	14,3%	13,4%	8,1%
Unloaded	87.244	52.917	-34.327	-39,3%	-31,1%	-38,0%
Transit	41.028	42.212	1.184	2,9%	-0,4%	23,1%

Monthly automobile traffic (u)	Monthly		Accumulated		%	
	2023	2024	2023	2024	Monthly	Accumulated
January	47.534	49.721	47.534	49.721	4,6%	4,6%
February	72.364	60.872	119.898	110.593	-15,9%	-7,8%
March	77.057	74.032	196.955	184.625	-3,9%	-6,3%
April	69.834	61.708	266.789	246.333	-11,6%	-7,7%
May	71.083		337.872			
June	72.935		410.807			
July	72.037		482.844			
August	48.671		531.515			
September	59.527		591.042			
October	62.244		653.286			
November	70.552		723.838			
December	66.480		790.318			

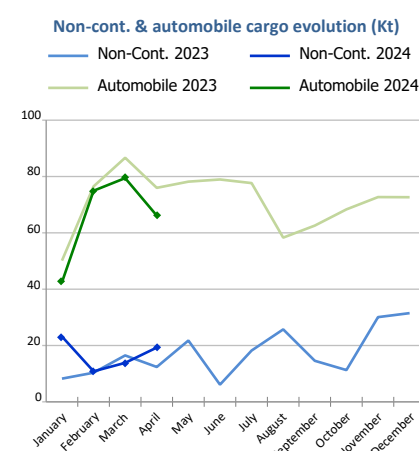
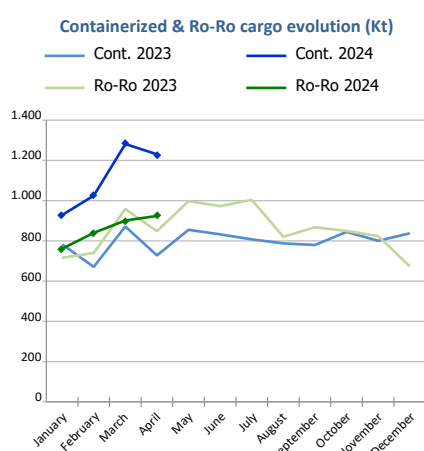
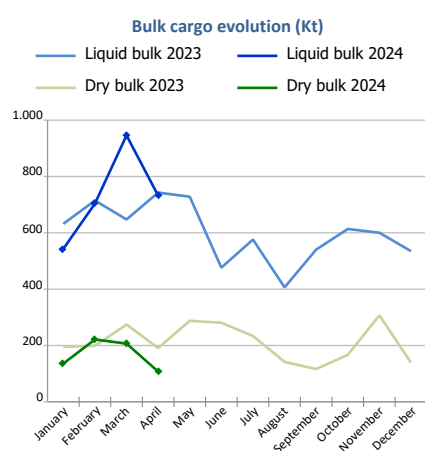
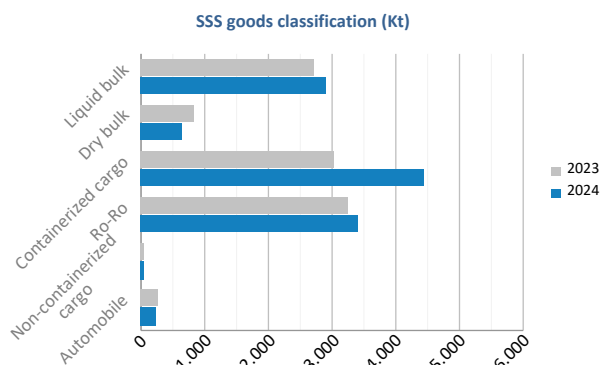
Evolution of monthly automobile traffic (u)



SHORT SEA SHIPPING (SSS)

SSS Goods classification

Goods classification. Tonnes	Monthly accumulated		%	% of total port traffic
	2023	2024		
Liquid bulk	2.736.724	2.925.042	6,9%	72,8%
Dry bulk	858.996	671.043	-21,9%	48,0%
Containerized cargo	3.053.065	4.465.488	46,3%	34,5%
Ro-Ro	3.262.291	3.426.290	5,0%	99,6%
Non-containerized cargo	47.434	67.145	41,6%	43,7%
Automobile	289.271	262.968	-9,1%	72,4%
Total	10.247.781	11.817.976	15,3%	52,9%



SSS General Cargo	Spanish Islands			SSS Remainder			TOTAL		
	2023	2024	%	2023	2024	%	2023	2024	%
Containerized cargo	294.435	321.397	9,2%	2.758.630	4.144.091	50,2%	3.053.065	4.465.488	46,3%
O/D	289.077	308.391	6,7%	1.045.546	1.305.761	24,9%	1.334.623	1.614.152	20,9%
Transit	5.357	13.005	142,8%	1.713.085	2.838.330	65,7%	1.718.442	2.851.336	65,9%
Ro-Ro	1.767.891	1.835.608	3,8%	1.494.400	1.590.682	6,4%	3.262.291	3.426.290	5,0%
O/D	1.767.891	1.835.596	3,8%	1.404.235	1.429.488	1,8%	3.172.127	3.265.085	2,9%
Transit	0	12		90.164	161.194	78,8%	90.164	161.206	78,8%
Non-cont. cargo	553	897	62,2%	46.881	66.248	41,3%	47.434	67.145	41,6%
O/D	553	897	62,2%	45.924	65.513	42,7%	46.478	66.410	42,9%
Transit	0	0	0,0%	957	736	-23,1%	957	736	-23,1%
Automobile	53.893	50.571	-6,2%	235.378	212.396	-9,8%	289.271	262.968	-9,1%
O/D	53.760	50.547	-6,0%	189.226	173.807	-8,1%	242.986	224.354	-7,7%
Transit	132	24	-81,6%	46.153	38.589	-16,4%	46.285	38.614	-16,6%



Short Sea Shipping (SSS):

The transport of cargo/goods and passengers between ports situated in the European Union or between these ports and non-European ports with a coastline in seas bordering Europe. This applies to cargo either originating from or is destined for these countries (in accordance with the European Shortsea Network).

Motorways of the sea (MoS):

Short Sea Shipping services as an alternative to road transport and which fulfill the following criteria: minimum frequency of 3 calls per week and calling at a maximum of 3 different ports.

General cargo:

Including containerized cargo, non-containerized cargo, Ro-Ro and automobiles.

Containerized cargo:

Excluding container cargo by Ro-Ro.

Non-containerized cargo:

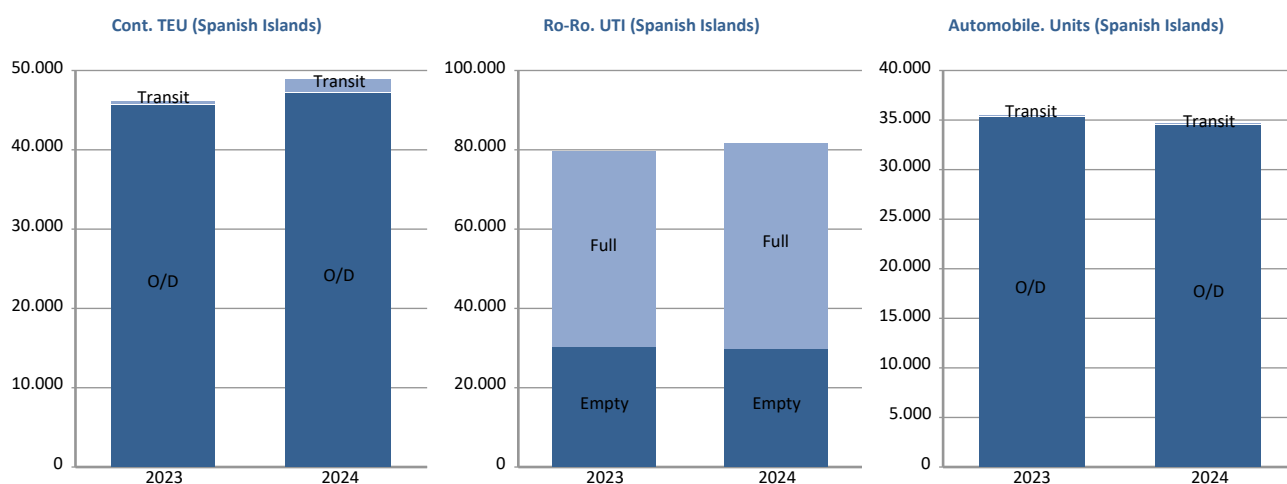
General non-containerized goods other than Ro-Ro and excluding automobiles.

Ro-Ro:

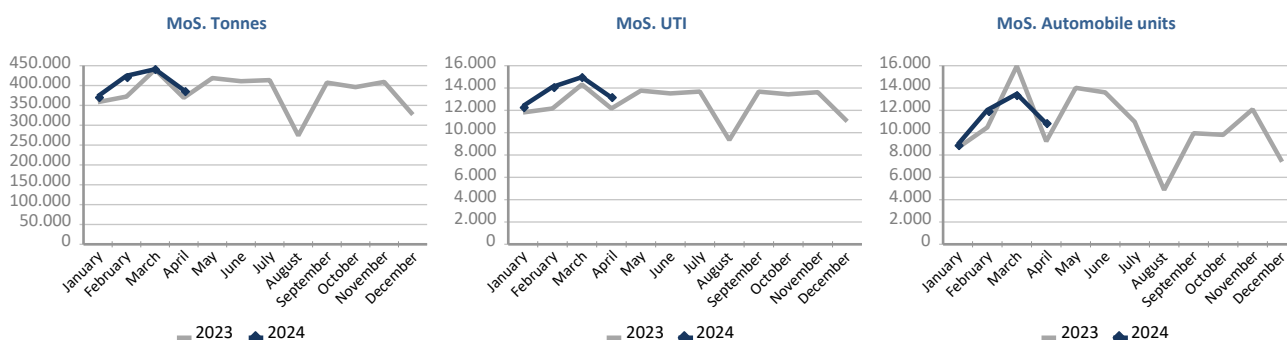
General cargo carried in UTI's. Excluding automobiles.

SHORT SEA SHIPPING (SSS)

SSS General cargo	Spanish Islands			SSS Remainder			TOTAL		
	2023	2024	%	2023	2024	%	2023	2024	%
Containerized cargo. TEU	46.141	48.836	5,8%	260.473	396.275	52,1%	306.614	445.111	45,2%
O/D	45.647	47.130	3,2%	127.761	167.921	31,4%	173.408	215.052	24,0%
Full	28.102	30.204	7,5%	73.429	89.673	22,1%	101.531	119.877	18,1%
Empty	17.545	16.926	-3,5%	54.331	78.248	44,0%	71.876	95.175	32,4%
Transit	494	1.706	245,2%	132.712	228.354	72,1%	133.206	230.060	72,7%
Full	410	1.079	163,0%	124.369	211.291	69,9%	124.779	212.370	70,2%
Empty	84	627	646,4%	8.344	17.063	104,5%	8.428	17.690	109,9%
Ro-Ro. UTI	79.505	81.738	2,8%	51.076	55.475	8,6%	130.581	137.213	5,1%
Full	49.440	51.902	5,0%	47.201	50.417	6,8%	96.641	102.319	5,9%
Empty	30.065	29.836	-0,8%	3.875	5.058	30,5%	33.940	34.894	2,8%
Automobile units	35.436	34.406	-2,9%	160.871	153.100	-4,8%	196.307	187.506	-4,5%
O/D	35.347	34.386	-2,7%	130.773	126.375	-3,4%	166.120	160.761	-3,2%
Transit	89	20	-77,5%	30.098	26.725	-11,2%	30.187	26.745	-11,4%



Motorways of the Sea (MoS)	2023	EU		Non-EU		TOTAL			
		2024	%	2023	2024	%	2023	2024	%
Tonnes	1.527.766	1.623.494	6,3%	12.055	3.305	-72,6%	1.539.820	1.626.799	5,6%
Loaded	808.179	881.870	9,1%	7.238	2.979	-58,8%	815.417	884.849	8,5%
Unloaded	719.586	741.624	3,1%	4.817	326	-93,2%	724.404	741.950	2,4%
UTI	49.873	54.455	9,2%	588	153	-74,0%	50.461	54.608	8,2%
Loaded	25.372	28.245	11,3%	380	142	-62,6%	25.752	28.387	10,2%
Unloaded	24.501	26.210	7,0%	208	11	-94,7%	24.709	26.221	6,1%
Automobile units	44.203	45.138	2,1%	102	138	35,3%	44.305	45.276	2,2%
Loaded	42.073	42.900	2,0%	97	138	42,3%	42.170	43.038	2,1%
Unloaded	2.130	2.238	5,1%	5	0		2.135	2.238	4,8%

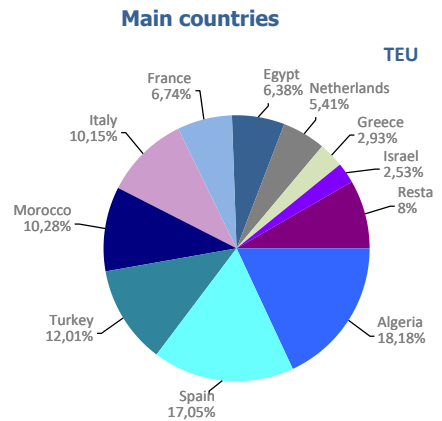


UTI: All those means of unitization, self-propelled or otherwise, that are directly or indirectly used as a means of land transport (e.g. trailers, platforms, trucks, freezer trucks, etc.) are considered as UTI. Containers are not considered to be included, except those that are handled by an equipment transport of the own terminal.

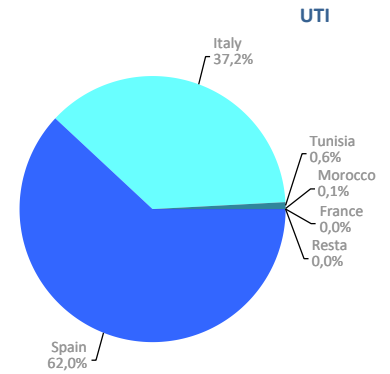
SHORT SEA SHIPPING (SSS)

SSS Ranking countries by mode of packaging

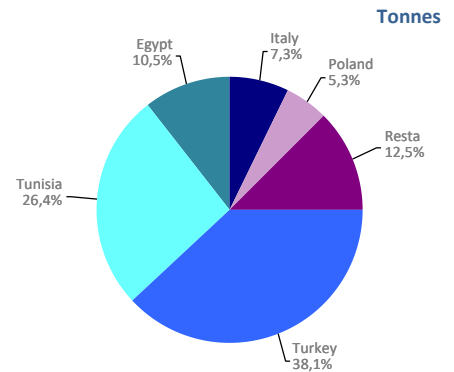
Containerized cargo. TEU	Monthly accumulated				% of total 2024
	2023	2024	Diff. 24-23	%	
Total	306.614	445.111	138.497	45,2%	100%
Algeria	50.985	80.940	29.955	58,8%	18,2%
Spain	65.278	75.889	10.610	16,3%	17,0%
Turkey	42.772	53.454	10.682	25,0%	12,0%
Morocco	38.243	45.756	7.512	19,6%	10,3%
Italy	25.298	45.182	19.884	78,6%	10,2%
France	27.438	30.002	2.564	9,3%	6,7%
Egypt	15.568	28.385	12.817	82,3%	6,4%
Netherlands	464	24.064	23.600	5086,1%	5,4%
Greece	10.006	13.037	3.032	30,3%	2,9%
Israel	6.238	11.283	5.045	80,9%	2,5%
Remainder	24.325	37.123	12.798	52,6%	8,3%



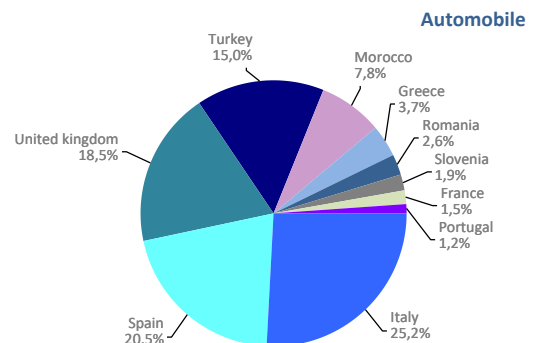
Ro-Ro. UTI	Monthly accumulated				% of total 2024
	2023	2024	Diff. 24-23	%	
Total	130.581	137.213	6.633	5,1%	100%
Spain	81.602	85.100	3.498	4,3%	62,0%
Italy	47.755	51.088	3.333	7,0%	37,2%
Tunisia	635	845	211	33,2%	0,6%
Morocco	588	167	-421	-71,6%	0,1%
France	0	11	11	0,0%	0,0%
Remainder	1	2	1	100,0%	0,0%



Non-cont. cargo. Tonnes	Monthly accumulated				% of total 2024
	2023	2024	Diff. 24-23	%	
Total	47.434	67.145	19.711	41,6%	100%
Turkey	532	25.579	25.047	4704,9%	38,1%
Tunisia	109	17.712	17.603	16149,7%	26,4%
Egypt	18.286	7.080	-11.206	-61,3%	10,5%
Italy	18.167	4.874	-13.293	-73,2%	7,3%
Poland	0	3.536	3.536	0,0%	5,3%
Remainder	10.339	8.364	-1.975	-19,1%	12,5%



Automobile. Units	Monthly accumulated				% of total 2024
	2023	2024	Diff. 24-23	%	
Total	196.307	187.506	-8.801	-4,5%	100%
Italy	46.035	47.213	1.178	2,6%	25,2%
Spain	41.754	38.502	-3.252	-7,8%	20,5%
United kingdom	26.361	34.704	8.343	31,6%	18,5%
Turkey	16.473	28.157	11.684	70,9%	15,0%
Morocco	12.903	14.557	1.654	12,8%	7,8%
Greece	6.967	6.900	-67	-1,0%	3,7%
Romania	7.919	4.803	-3.116	-39,3%	2,6%
Slovenia	1.625	3.625	2.000	123,1%	1,9%
France	11.988	2.805	-9.183	-76,6%	1,5%
Portugal	2.093	2.181	88	4,2%	1,2%
Remainder	22.189	4.059	-18.130	-81,7%	2,2%



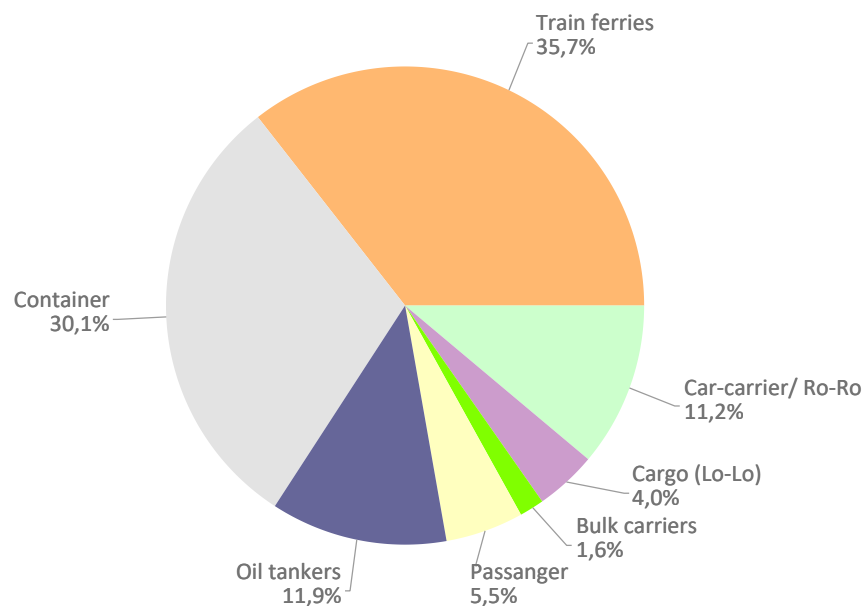
VESSELS TRAFFIC

Vessels traffic	Monthly accumulated		
	2023	2024	%
Number of calls	2.666	2.642	-0,9%
Tonnage	104.565.962	105.659.684	1,0%
Average tonnes	39.222	39.992	2,0%

Type of vessels	Monthly accumulated					
	2023		2024		%	
	Calls	GT	Calls	GT	Calls	GT
Total	2.666	104.565.962	2.642	105.659.684	-0,9%	1,0%
Car-carrier/ Ro-Ro	298	15.913.866	296	15.341.467	-0,7%	-3,6%
Cargo (Lo-Lo)	113	665.521	106	992.601	-6,2%	49,1%
Bulk carriers	54	1.468.378	43	1.302.172	-20,4%	-11,3%
Passanger	157	18.317.017	144	17.295.984	-8,3%	-5,6%
Oil tankers	365	7.243.137	314	5.146.915	-14,0%	-28,9%
Container	695	30.619.406	796	37.180.719	14,5%	21,4%
Train ferries	984	30.338.637	943	28.399.826	-4,2%	-6,4%

Type of vessels (monthly accumulated 2024)	Domestic		Foreign	
	Calls	GT	Calls	GT
Total	952	22.576.764	1.690	83.082.920
Car-carrier/ Ro-Ro	21	502.745	275	14.838.722
Cargo (Lo-Lo)	10	51.328	96	941.273
Bulk carriers	4	74.231	39	1.227.941
Passanger	22	1.294.148	122	16.001.836
Oil tankers	37	427.700	277	4.719.215
Container	112	1.345.430	684	35.835.289
Train ferries	746	18.881.182	197	9.518.644

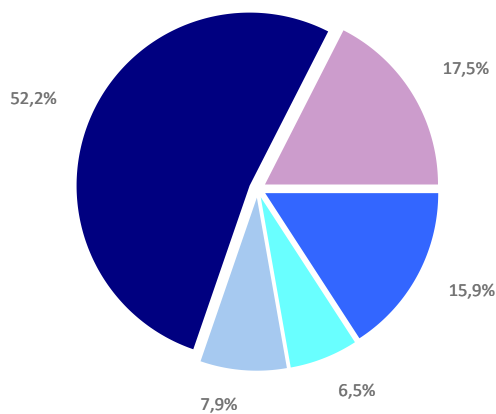
Distribution by type of vessel



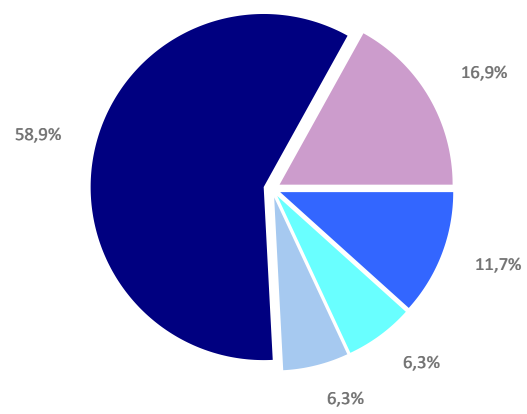
GOODS TRAFFIC

Type of packaging and navigation	Monthly accumulated 2023			Monthly accumulated 2024			%
	Domestic	Foreign	Total	Domestic	Foreign	Total	
Hydrocarbons	332.448	2.927.507	3.259.955	172.720	2.440.037	2.612.757	-19,9%
Incoming	274.466	2.365.719	2.640.185	89.682	2.008.430	2.098.111	-20,5%
Outgoing	57.982	561.788	619.770	83.039	431.608	514.646	-17,0%
Other liquid bulk	67.036	1.267.811	1.334.848	169.125	1.235.312	1.404.437	5,2%
Incoming	37.019	869.417	906.435	124.016	839.086	963.102	6,3%
Outgoing	30.018	398.395	428.413	45.109	396.226	441.335	3,0%
Dry bulk	60.431	1.573.905	1.634.337	26.795	1.370.197	1.396.992	-14,5%
Incoming	52.335	798.858	851.193	26.795	875.495	902.290	6,0%
Outgoing	8.097	775.047	783.144	0	494.702	494.702	-36,8%
Containerized cargo	452.265	10.281.274	10.733.538	455.616	12.685.824	13.141.441	22,4%
Incoming	141.506	4.907.160	5.048.667	142.255	6.141.573	6.283.828	24,5%
Outgoing	310.758	5.374.113	5.684.872	313.361	6.544.251	6.857.612	20,6%
Non-containerized cargo	1.700.467	1.903.765	3.604.232	1.776.733	1.989.436	3.766.169	4,5%
Incoming	552.135	979.431	1.531.566	587.633	993.380	1.581.014	3,2%
Outgoing	1.148.332	924.334	2.072.666	1.189.099	996.056	2.185.155	5,4%
Total general cargo	2.152.732	12.185.039	14.337.771	2.232.349	14.675.260	16.907.609	17,9%
Incoming	693.641	5.886.592	6.580.233	729.889	7.134.954	7.864.842	19,5%
Outgoing	1.459.090	6.298.447	7.757.538	1.502.461	7.540.307	9.042.767	16,6%
Total throughput (tonnes)	2.612.647	17.954.263	20.566.910	2.600.989	19.720.807	22.321.796	8,5%
Incoming	1.057.461	9.920.586	10.978.046	970.381	10.857.964	11.828.346	7,7%
Outgoing	1.555.187	8.033.677	9.588.864	1.630.608	8.862.842	10.493.450	9,4%
Container traffic (TEU)	74.676	952.087	1.026.763	73.950	1.216.694	1.290.644	25,7%
Incoming	40.378	475.057	515.435	38.964	618.698	657.662	27,6%
Outgoing	34.299	477.030	511.329	34.986	597.996	632.982	23,8%

Distribution by type of packaging 2023

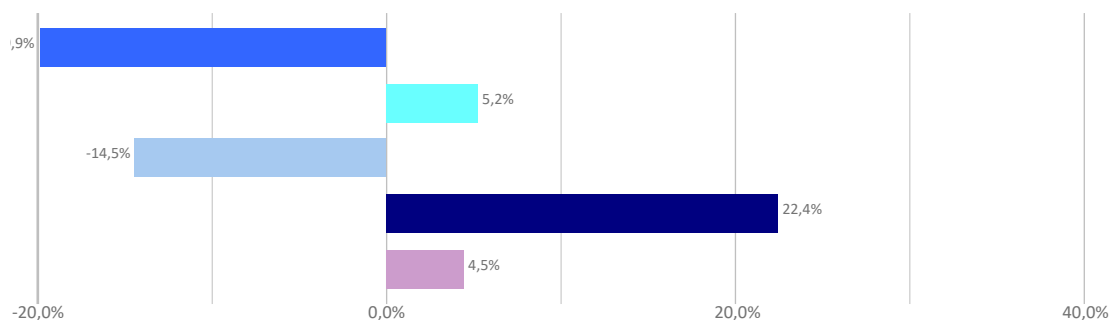


Distribution by type of packaging 2024



Hydrocarbons Liquid bulk Dry bulk Containerized cargo Non Containerized cargo

Annual growth by type of packaging



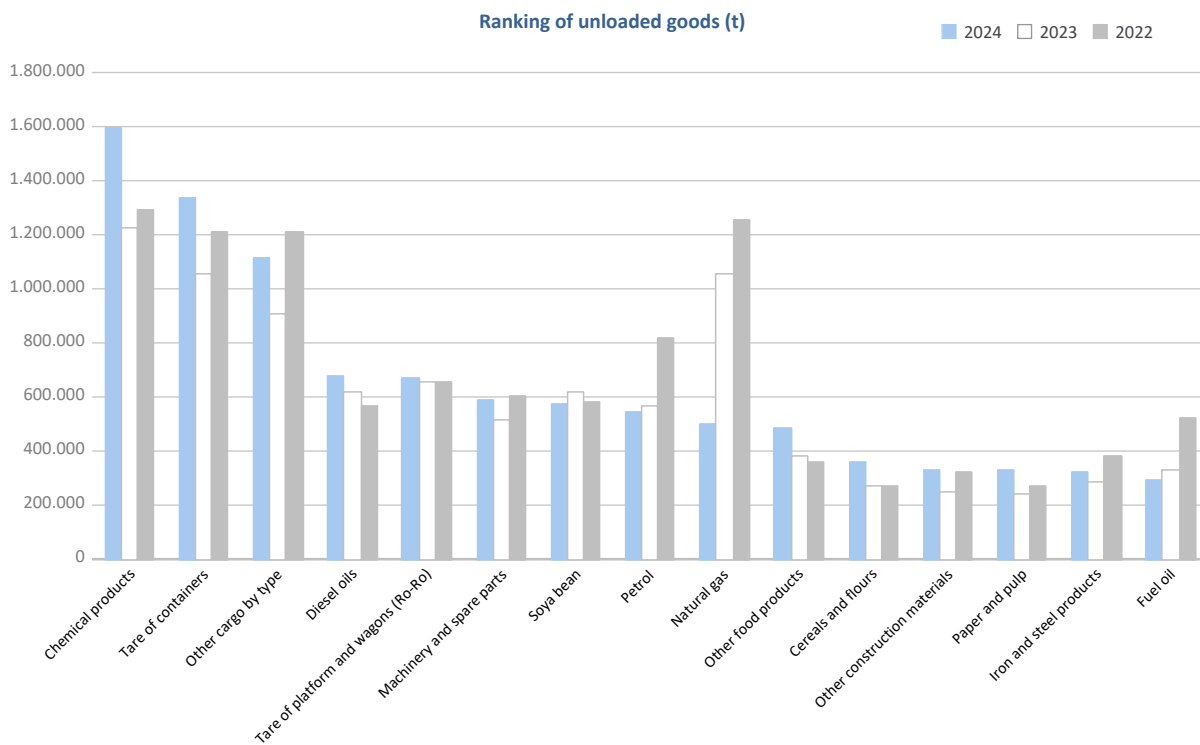
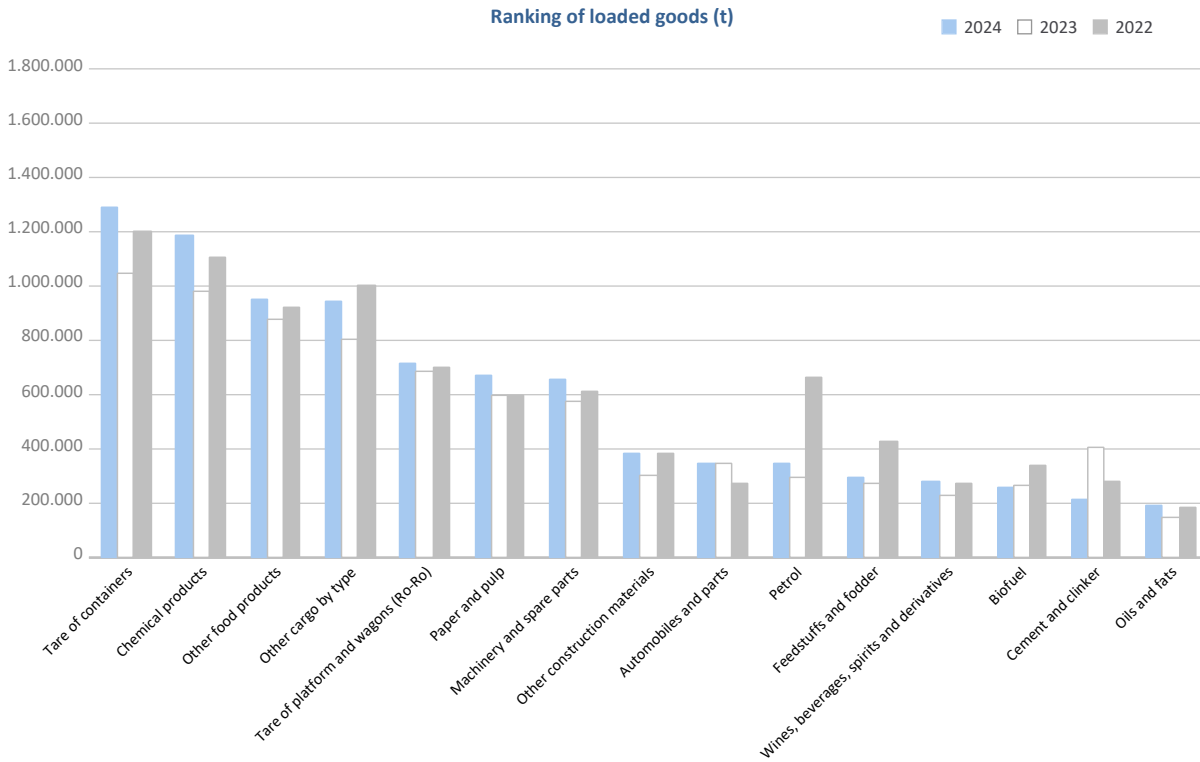
GOODS TRAFFIC

Goods by classification 4.3.7.	Monthly accumulated				% of total accum. 2024
	2023	2024	Diff. 24-23	%	
Tonnes	20.566.910	22.321.796	1.754.885	8,5%	100%
Energy	3.883.105	3.129.541	-753.564	-19,4%	14,0%
Crude oil	30	118	88	297,0%	0,0%
Fuel oil	363.312	321.715	-41.597	-11,4%	1,4%
Diesel oils	717.059	780.071	63.012	8,8%	3,5%
Petrol	865.042	886.737	21.696	2,5%	4,0%
Other petroleum products	86.437	105.173	18.736	21,7%	0,5%
Petroleum fuel gasses	18.654	19.425	772	4,1%	0,1%
Coal	25.832	20.072	-5.760	-22,3%	0,1%
Natural gas	1.254.792	551.992	-702.800	-56,0%	2,5%
Biofuel	551.949	444.238	-107.711	-19,5%	2,0%
Iron, steel and metallurgical products	953.056	1.032.202	79.146	8,3%	4,6%
Iron ore	1.705	2.848	1.143	67,1%	0,0%
Other minerals and metallic waste	139.439	205.874	66.435	47,6%	0,9%
Scrap iron	162.820	179.266	16.446	10,1%	0,8%
Iron and steel products	441.567	489.940	48.374	11,0%	2,2%
Other metallurgical products	207.525	154.273	-53.252	-25,7%	0,7%
Non-metallic minerals	368.450	320.188	-48.262	-13,1%	1,4%
Common salt	238.983	123.840	-115.143	-48,2%	0,6%
Other non-metallic minerals	129.466	196.347	66.881	51,7%	0,9%
Fertilizers	230.270	276.214	45.944	20,0%	1,2%
Phosphates	49	78	29	59,7%	0,0%
Potashes	143.405	189.589	46.184	32,2%	0,8%
Natural/artificial fertilizer	86.816	86.547	-269	-0,3%	0,4%
Chemicals	2.202.320	2.782.862	580.542	26,4%	12,5%
Chemical products	2.202.320	2.782.862	580.542	26,4%	12,5%
Construction materials	977.925	947.068	-30.857	-3,2%	4,2%
Asphalt	1.603	4.659	3.056	190,7%	0,0%
Cement and clinker	424.360	226.624	-197.736	-46,6%	1,0%
Other construction materials	551.962	715.785	163.823	29,7%	3,2%
Agriculture, livestock and food	4.116.660	4.664.642	547.983	13,3%	20,9%
Cereals and flours	312.349	454.172	141.823	45,4%	2,0%
Soya bean	696.146	639.730	-56.416	-8,1%	2,9%
Fruits, vegetables, pulses	182.100	231.899	49.799	27,3%	1,0%
Wines, beverages, spirits and derivatives	273.468	373.326	99.858	36,5%	1,7%
Canned goods	114.764	103.646	-11.118	-9,7%	0,5%
Tobacco, coffee, cocoa	277.938	377.050	99.112	35,7%	1,7%
Oils and fats	450.005	450.326	321	0,1%	2,0%
Other food products	1.259.953	1.438.701	178.747	14,2%	6,4%
Frozen fish	222.903	201.706	-21.198	-9,5%	0,9%
Feedstuffs and fodder	327.031	394.086	67.055	20,5%	1,8%
Other cargo	3.736.346	4.516.675	780.329	20,9%	20,2%
Timber	100.875	205.090	104.214	103,3%	0,9%
Paper and pulp	835.286	1.000.617	165.332	19,8%	4,5%
Machinery and spare parts	1.089.961	1.246.980	157.019	14,4%	5,6%
Other cargo by type	1.710.224	2.063.988	353.764	20,7%	9,2%
Vehicles and transport parts	4.098.778	4.652.402	553.624	13,5%	20,8%
Automobiles and parts	653.677	634.588	-19.089	-2,9%	2,8%
Tare of platform and wagons (Ro-Ro)	1.341.370	1.390.215	48.845	3,6%	6,2%
Tare of containers	2.103.731	2.627.599	523.868	24,9%	11,8%

GOODS TRAFFIC

Goods by classification 4.3.7.

Ranking of goods (tonnes)

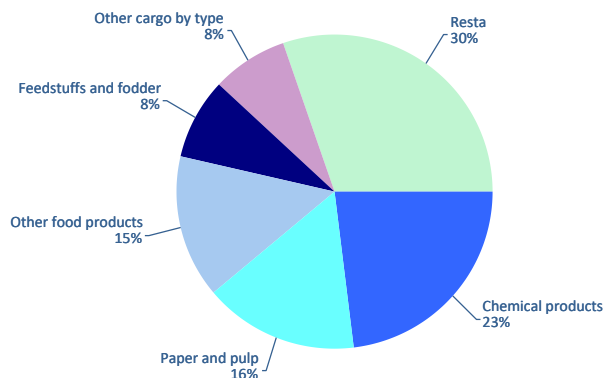


GOODS TRAFFIC

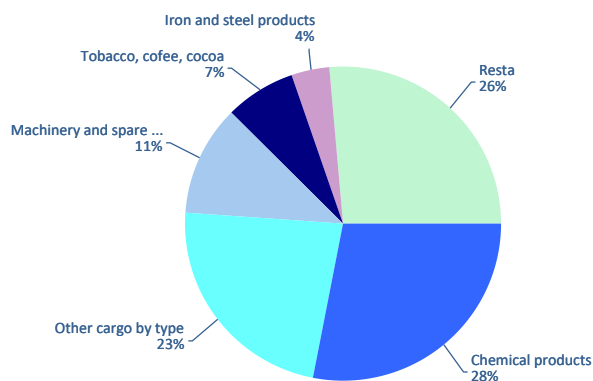
Containerized goods by classification 4.3.7. (Tares & transits not included)

Containerized goods classification	Loaded			Unloaded			Total monthly accumulated		
	2023	2024	%	2023	2024	%	2023	2024	%
Total tonnes (tares & transits not included)	2.610.269	2.656.033	1,8%	1.903.898	1.936.976	1,7%	4.514.167	4.593.009	1,7%
Chemical products	505.578	613.623	21,4%	504.128	542.269	7,6%	1.009.706	1.155.892	14,5%
Other cargo by type	208.068	205.143	-1,4%	413.112	448.581	8,6%	621.180	653.724	5,2%
Paper and pulp	441.135	420.035	-4,8%	50.852	69.462	36,6%	491.987	489.497	-0,5%
Other food products	436.141	393.811	-9,7%	33.509	19.306	-42,4%	469.650	413.116	-12,0%
Machinery and spare parts	152.562	150.821	-1,1%	255.880	222.217	-13,2%	408.442	373.038	-8,7%
Feedstuffs and fodder	213.596	216.899	1,5%	17.450	29.554	69,4%	231.046	246.453	6,7%
Tobacco, cofee, cocoa	25.656	26.462	3,1%	125.171	139.079	11,1%	150.827	165.541	9,8%
Other construction materials	91.456	93.088	1,8%	75.533	68.379	-9,5%	166.989	161.467	-3,3%
Wines, beverages, spirits and derivatives	126.592	121.538	-4,0%	12.371	11.766	-4,9%	138.962	133.304	-4,1%
Iron and steel products	61.106	54.226	-11,3%	83.279	75.615	-9,2%	144.385	129.841	-10,1%
Automobiles and parts	45.478	39.502	-13,1%	57.820	72.481	25,4%	103.298	111.983	8,4%
Other minerals and metallic waste	58.500	70.342	20,2%	7.499	10.489	39,9%	65.999	80.832	22,5%
Other metallurgical products	30.573	25.566	-16,4%	56.659	44.215	-22,0%	87.232	69.780	-20,0%
Other non-metallic minerals	33.903	35.629	5,1%	22.019	27.219	23,6%	55.923	62.848	12,4%
Oils and fats	42.986	47.882	11,4%	16.871	11.761	-30,3%	59.857	59.644	-0,4%
Fruits, vegetables, pulses	11.723	10.237	-12,7%	51.294	43.219	-15,7%	63.017	53.456	-15,2%
Canned goods	25.321	22.987	-9,2%	31.103	24.039	-22,7%	56.424	47.026	-16,7%
Biofuel	30.216	36.224	19,9%	9.003	8.564	-4,9%	39.219	44.788	14,2%
Cereals and flours	16.803	13.271	-21,0%	12.166	13.086	7,6%	28.969	26.357	-9,0%
Natural/artificial fertilizer	12.356	14.537	17,7%	20.205	7.598	-62,4%	32.561	22.135	-32,0%
Scrap iron	6.386	7.762	21,5%	8.386	9.794	16,8%	14.772	17.556	18,8%
Frozen fish	3.306	811	-75,5%	12.688	12.785	0,8%	15.994	13.596	-15,0%
Other petroleum products	6.690	7.889	17,9%	5.143	4.467	-13,2%	11.833	12.355	4,4%
Timber	3.649	3.635	-0,4%	7.320	7.729	5,6%	10.969	11.364	3,6%
Common salt	9.526	10.479	10,0%	874	652	-25,4%	10.400	11.131	7,0%
Coal	1.369	1.439	5,1%	10.975	5.502	-49,9%	12.344	6.941	-43,8%
Fuel oil	2.239	2.652	18,4%	1.219	2.572	111,0%	3.459	5.224	51,0%
Cement and clinker	5.001	4.495	-10,1%	0	28		5.001	4.523	-9,6%
Soya bean	0	7		264	3.452	1209,9%	264	3.459	1212,6%
Asphalt	909	2.588	184,7%	0	0		909	2.588	184,7%
Petroleum fuel gasses	1.359	2.307	69,8%	149	178	19,4%	1.508	2.485	64,8%
Potashes	28	66	131,7%	622	819	31,6%	650	884	36,0%
Crude oil	8	23	197,3%	22	75	240,9%	30	98	229,6%
Petrol	0	25		0	22		0	48	
Phosphates	49	33	-32,4%	0	0		49	33	-32,4%
Iron ore	1	1	100,0%	312	2	-99,2%	313	3	-99,0%
Natural gas	2	0		0	0		2	0	

Distribution of main goods Loaded 2024



Distribution of main goods Unloaded 2024

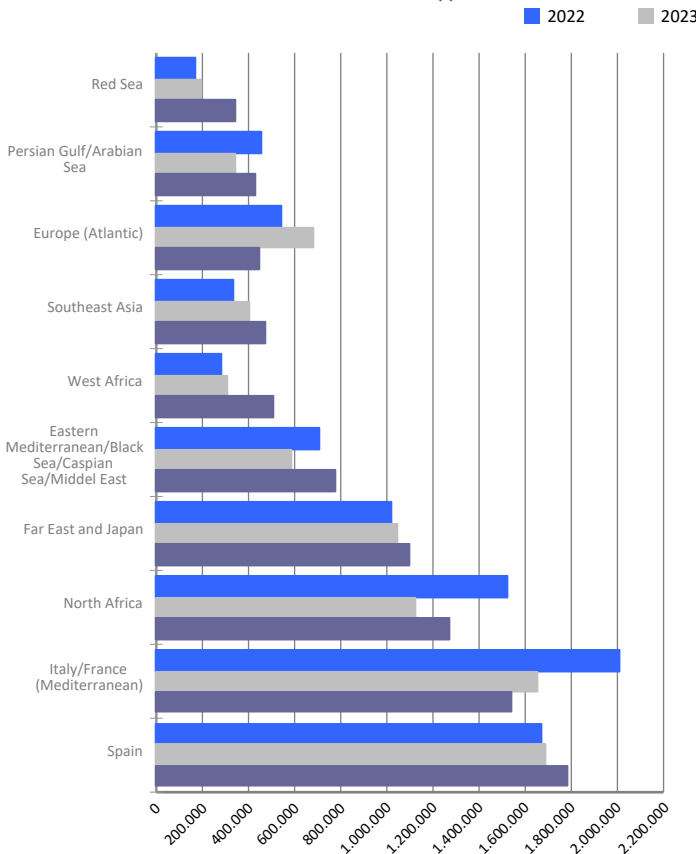


MARITIME TRAFFIC BY ORIGIN/DESTINATION

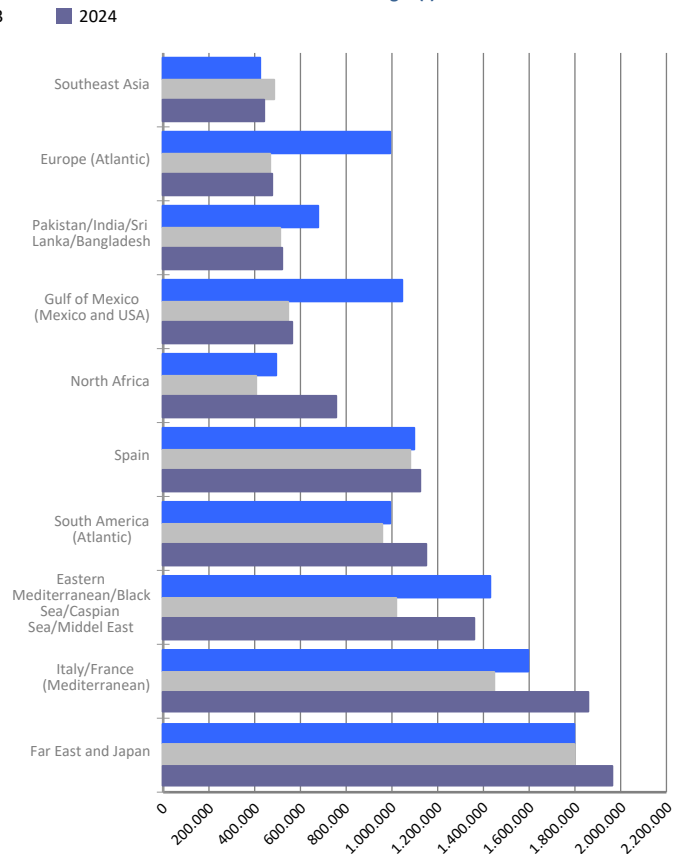
Geographical areas. Tonnes

Geographical areas	Monthly accumulated				% of total accum. 2024
	2023	2024	Diff. 24-23	%	
Tonnes	20.566.910	22.321.796	1.754.885	8,5%	100%
Italy/France (Mediterranean)	3.101.708	3.403.285	301.577	9,7%	15,2%
Far East and Japan	2.841.849	3.057.870	216.021	7,6%	13,7%
Spain	2.771.489	2.913.581	142.092	5,1%	13,1%
Eastern Mediterranean/Black Sea/Caspian Sea/Middel	1.599.293	2.132.263	532.970	33,3%	9,6%
North Africa	1.538.180	2.028.638	490.458	31,9%	9,1%
South America (Atlantic)	1.123.428	1.324.305	200.877	17,9%	5,9%
Europe (Atlantic)	1.149.708	927.842	-221.865	-19,3%	4,2%
Southeast Asia	890.582	918.296	27.714	3,1%	4,1%
Pakistan/India/Sri Lanka/Bangladesh	785.423	865.917	80.494	10,2%	3,9%
Gulf of Mexico (Mexico and USA)	853.259	794.744	-58.515	-6,9%	3,6%
West Africa	664.938	723.167	58.229	8,8%	3,2%
Persian Gulf/Arabian Sea	1.228.446	715.170	-513.276	-41,8%	3,2%
Red Sea	273.566	560.311	286.746	104,8%	2,5%
North America (Atlantic)	477.588	559.254	81.666	17,1%	2,5%
Central America and Caribbean	364.802	377.330	12.528	3,4%	1,7%
Unknown area (Tare of empty containers)	145.155	250.257	105.102	72,4%	1,1%
Canada (Atlantic) and Great Lakes	384.141	244.745	-139.396	-36,3%	1,1%
South-Eastern Africa/Indian Ocean	122.237	202.767	80.529	65,9%	0,9%
South America (Pacific)	155.406	164.030	8.625	5,5%	0,7%
Australia, New Zealand/Pacific Islands	71.773	79.612	7.838	10,9%	0,4%
North America (Pacific)	23.940	78.413	54.472	227,5%	0,4%

Main areas of destination (t)



Main areas of origin (t)

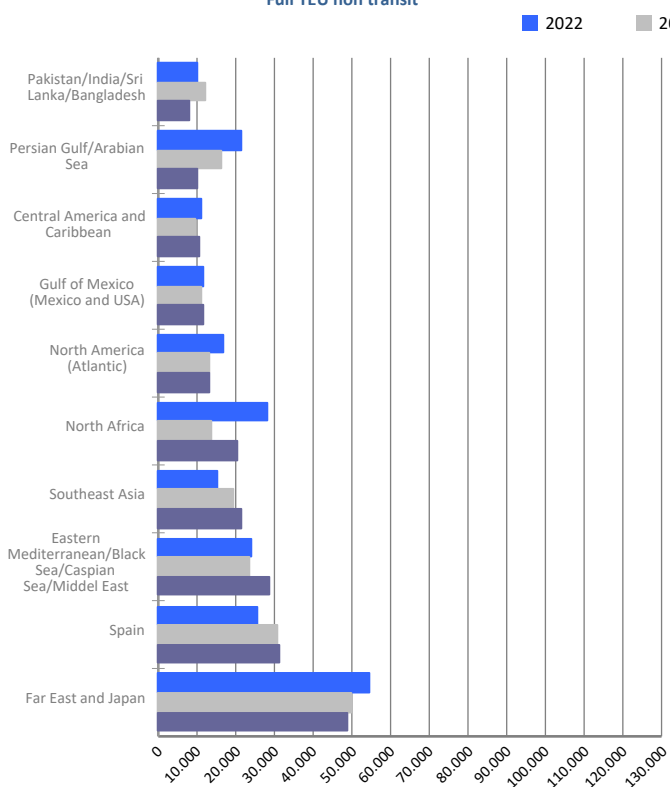


MARITIME TRAFFIC BY ORIGIN/DESTINATION

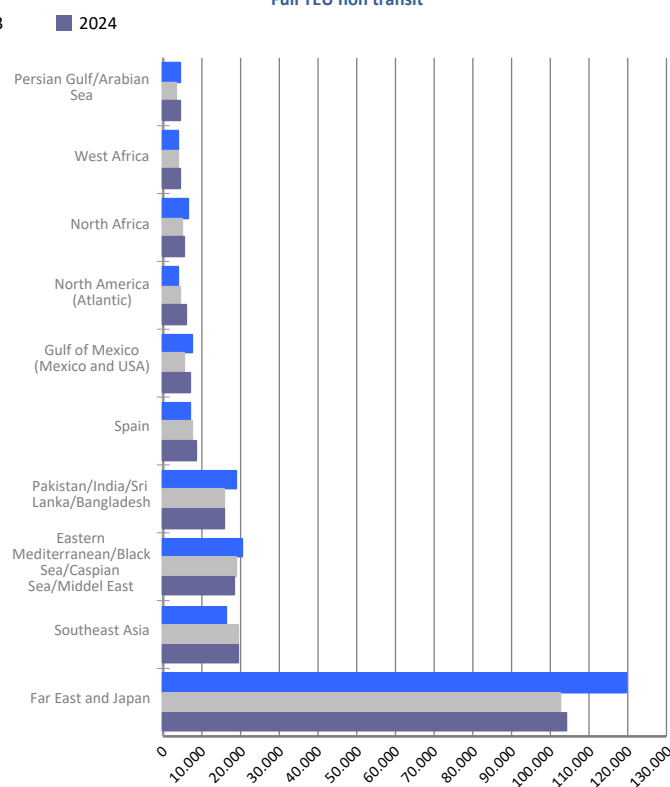
Geographical areas. Full TEU non transit

Geographical areas	Monthly accumulated				% of total accum. 2024
	2023	2024	Diff. 24-23	%	
Full TEU non transit	454.478	464.049	9.572	2,1%	100%
Far East and Japan	152.799	152.985	186	0,1%	33,0%
Eastern Mediterranean/Black Sea/Caspian Sea/Middel	42.650	47.367	4.718	11,1%	10,2%
Southeast Asia	38.538	41.107	2.569	6,7%	8,9%
Spain	38.616	40.122	1.506	3,9%	8,6%
North Africa	19.092	25.937	6.845	35,9%	5,6%
Pakistan/India/Sri Lanka/Bangladesh	27.949	24.205	-3.745	-13,4%	5,2%
North America (Atlantic)	17.898	19.257	1.359	7,6%	4,1%
Gulf of Mexico (Mexico and USA)	16.505	18.900	2.395	14,5%	4,1%
Persian Gulf/Arabian Sea	20.045	14.642	-5.403	-27,0%	3,2%
Central America and Caribbean	12.557	12.731	174	1,4%	2,7%
South America (Atlantic)	11.106	11.297	192	1,7%	2,4%
West Africa	10.282	11.170	889	8,6%	2,4%
South America (Pacific)	9.820	9.745	-75	-0,8%	2,1%
Red Sea	10.664	9.721	-943	-8,8%	2,1%
South-Eastern Africa/Indian Ocean	7.920	7.528	-392	-4,9%	1,6%
Canada (Atlantic) and Great Lakes	4.612	4.856	244	5,3%	1,0%
Italy/France (Mediterranean)	6.183	3.964	-2.219	-35,9%	0,9%
Australia, New Zealand/Pacific Islands	3.703	3.808	105	2,8%	0,8%
North America (Pacific)	1.951	2.663	712	36,5%	0,6%
Europe (Atlantic)	1.591	2.047	456	28,7%	0,4%

Main areas of destination
Full TEU non transit



Main areas of origin
Full TEU non transit

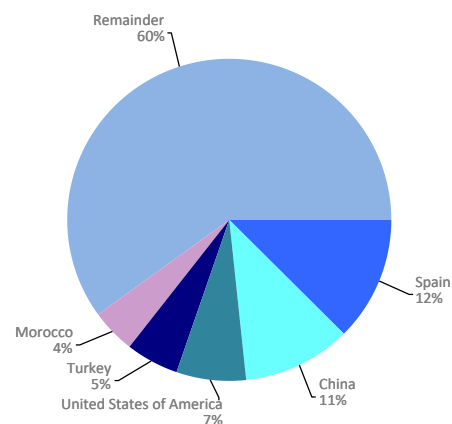


MARITIME TRAFFIC BY ORIGIN/DESTINATION

Ranking countries. Full TEU non transit

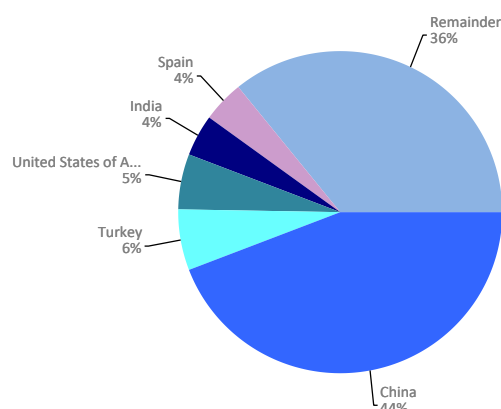
Loaded	Full TEU	% 24-23	% a/packaging
Spain	31.388	1,1%	12,4%
China	27.769	2,2%	11,0%
United States of America	17.817	3,3%	7,0%
Turkey	13.160	13,2%	5,2%
Morocco	11.248	59,6%	4,4%
Mexico	10.057	10,7%	4,0%
Japan	8.579	-6,3%	3,4%
United Arab Emirates	6.907	-40,8%	2,7%
Saudi Arabia	6.173	-9,5%	2,4%
India	6.093	-41,8%	2,4%
Vietnam	6.080	37,2%	2,4%
Egypt	5.997	54,3%	2,4%
Israel	5.836	58,1%	2,3%
Malaysia	5.652	-9,3%	2,2%
Greece	5.343	23,0%	2,1%
Remainder	85.100	-1,6%	33,6%
TOTAL	253.198	1,1%	100%

Main countries. Loaded



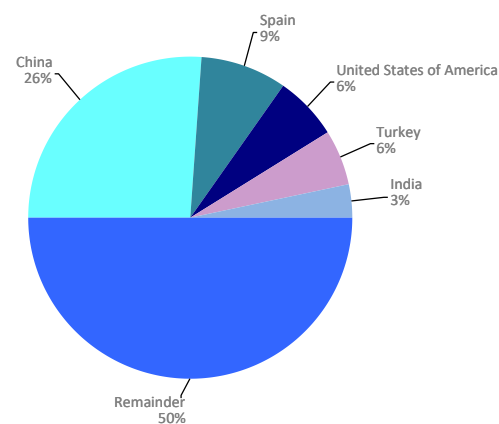
Unloaded	Full TEU	% 24-23	% a/packaging
China	92.999	2,8%	44,1%
Turkey	13.197	1,0%	6,3%
United States of America	11.301	31,6%	5,4%
India	9.263	5,6%	4,4%
Spain	8.734	15,1%	4,1%
Vietnam	8.606	2,4%	4,1%
Korea (South)	6.910	-4,9%	3,3%
Saudi Arabia	4.260	27,5%	2,0%
Egypt	4.140	0,2%	2,0%
Thailand	3.640	37,6%	1,7%
Bangladesh	3.630	-17,6%	1,7%
Greece	3.149	3,2%	1,5%
Mexico	2.679	14,8%	1,3%
Cote d'Ivoire	2.678	60,8%	1,3%
Brazil	2.652	17,1%	1,3%
Remainder	33.016	-8,6%	15,7%
TOTAL	210.851	3,3%	100%

Main countries. Unloaded



Total	Full TEU	% 24-23	% a/packaging
China	120.768	2,7%	26,0%
Spain	40.122	3,9%	8,6%
United States of America	29.118	12,7%	6,3%
Turkey	26.356	6,7%	5,7%
India	15.356	-20,2%	3,3%
Vietnam	14.686	14,4%	3,2%
Mexico	12.736	11,6%	2,7%
Morocco	12.211	58,9%	2,6%
Korea (South)	12.169	-10,9%	2,6%
Japan	10.556	-7,1%	2,3%
Saudi Arabia	10.433	2,7%	2,2%
Egypt	10.136	26,4%	2,2%
Greece	8.492	14,8%	1,8%
United Arab Emirates	7.990	-37,3%	1,7%
Thailand	7.469	33,2%	1,6%
Remainder	125.453	-1,7%	27,0%
TOTAL	464.049	2,1%	100%

Main countries. Total



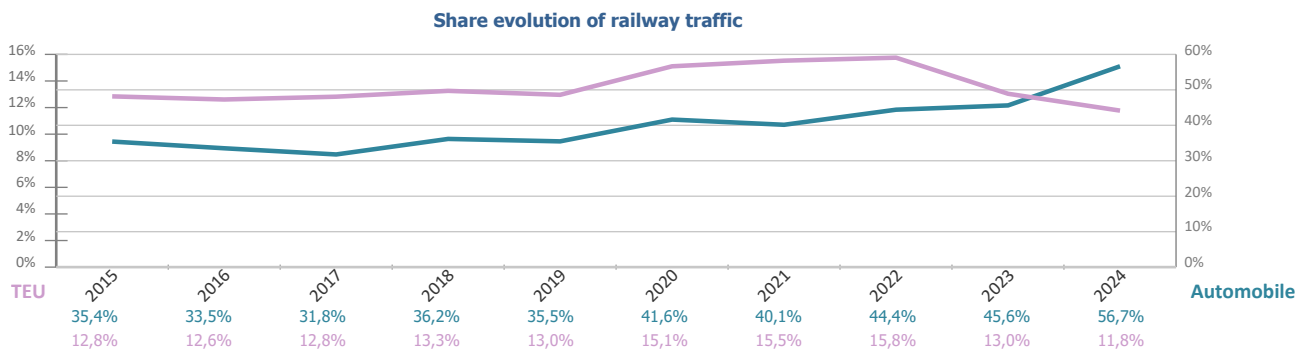
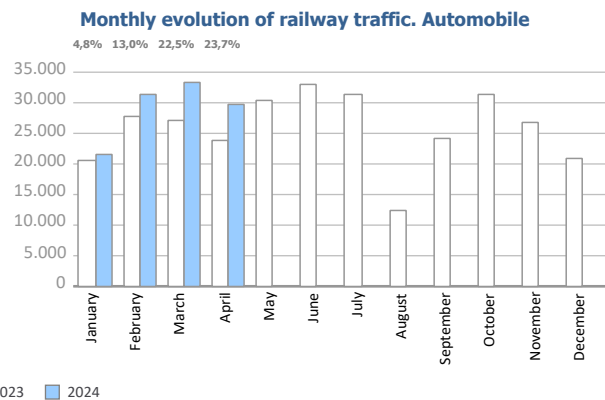
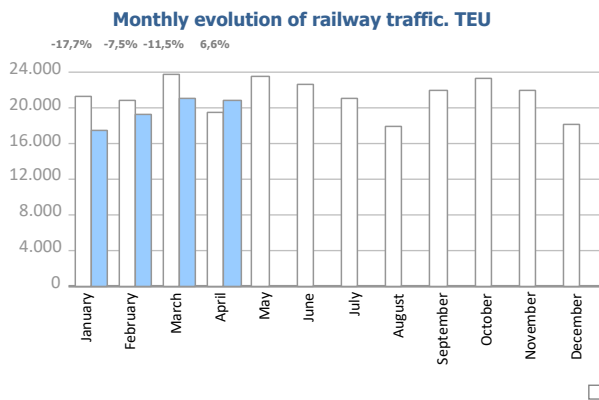
RAILWAY TRAFFIC

Monthly evolution of railway traffic. TEU

Monthly evolution of railway traffic	TEU 2023			TEU 2024			%		% of total port traffic 2024
	Loaded	Unloaded	Total	Loaded	Unloaded	Total	Monthly	Accumulated	
January	10.946	10.351	21.297	7.901	9.633	17.534	-17,7%	-17,7%	11,4%
February	10.012	10.850	20.862	8.751	10.545	19.296	-7,5%	-12,6%	12,2%
March	11.720	12.120	23.840	9.664	11.438	21.102	-11,5%	-12,2%	11,2%
April	9.632	9.846	19.478	10.070	10.684	20.754	6,6%	-7,9%	12,3%
May	12.232	11.299	23.531						
June	11.297	11.397	22.694						
July	10.049	10.979	21.028						
August	8.856	9.030	17.886						
September	10.815	11.129	21.944						
October	11.031	12.246	23.277						
November	10.067	11.795	21.862						
December	8.192	9.931	18.122						
Total	124.847	130.971	255.818	36.386	42.300	78.686			11,8%

Monthly evolution of railway traffic. Automobile

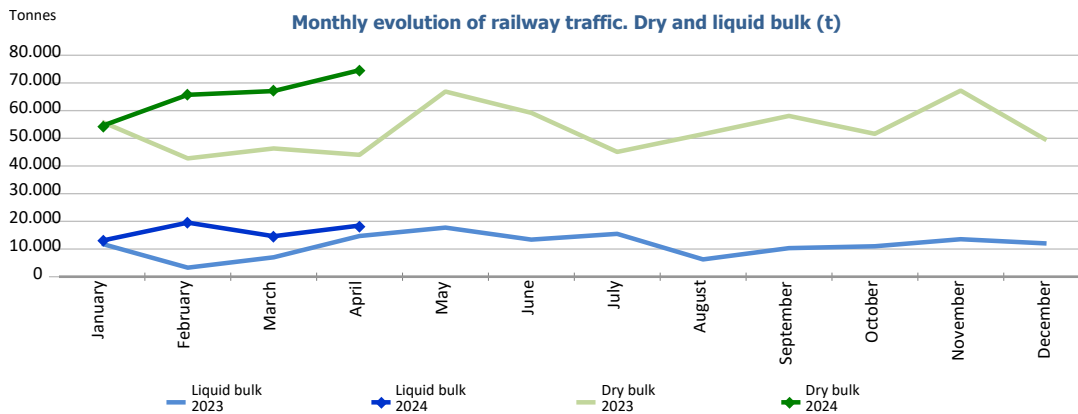
Monthly evolution of railway traffic	Automobile 2023			Automobile 2024			%		% of total port traffic 2024
	Loaded	Unloaded	Total	Loaded	Unloaded	Total	Monthly	Accumulated	
January	4.150	16.267	20.417	2.696	18.708	21.404	4,8%	4,8%	52,4%
February	5.096	22.553	27.649	4.150	27.099	31.249	13,0%	9,5%	61,5%
March	3.567	23.677	27.244	4.458	28.926	33.384	22,5%	14,2%	51,7%
April	4.515	19.415	23.930	3.573	26.030	29.603	23,7%	16,5%	61,7%
May	5.929	24.358	30.287						
June	5.878	27.021	32.899						
July	6.807	24.450	31.257						
August	1.982	10.394	12.376						
September	5.584	18.633	24.217						
October	6.117	25.138	31.255						
November	5.350	21.525	26.875						
December	3.150	17.854	21.004						
Total	58.125	251.285	309.410	14.877	100.763	115.640			56,7%



RAILWAY TRAFFIC

Monthly evolution of railway traffic. Dry and liquid bulk. Tonnes

Monthly evolution of railway traffic	Tonnes 2023			Tonnes 2024			%	
	Dry bulk	Liquid bulk	Total	Dry bulk	Liquid bulk	Total	Monthly	Accumulated
January	55.964	11.888	67.852	54.457	13.024	67.481	-0,5%	-0,5%
February	42.746	3.263	46.009	65.710	19.534	85.244	85,3%	34,1%
March	46.334	7.014	53.348	67.073	14.630	81.703	53,2%	40,2%
April	44.027	14.701	58.728	74.604	18.473	93.077	58,5%	45,0%
May	66.894	17.738	84.632					
June	59.200	13.398	72.598					
July	45.081	15.485	60.566					
August	51.511	6.251	57.762					
September	58.090	10.320	68.410					
October	51.617	10.995	62.612					
November	67.236	13.547	80.783					
December	49.345	12.016	61.361					
Total	638.045	136.616	774.661	261.844	65.661	327.505		



Railway traffic.

Railway gauge traffic (u)	Monthly accumulated		%	% of accumulated total 2024
	2023	2024		
Iberian gauge	2.392	2.349	-1,8%	61,8%
UIC	128	283	121,1%	7,4%
FGC	873	1.168	33,8%	30,7%
Total	3.393	3.800	12,0%	100%

