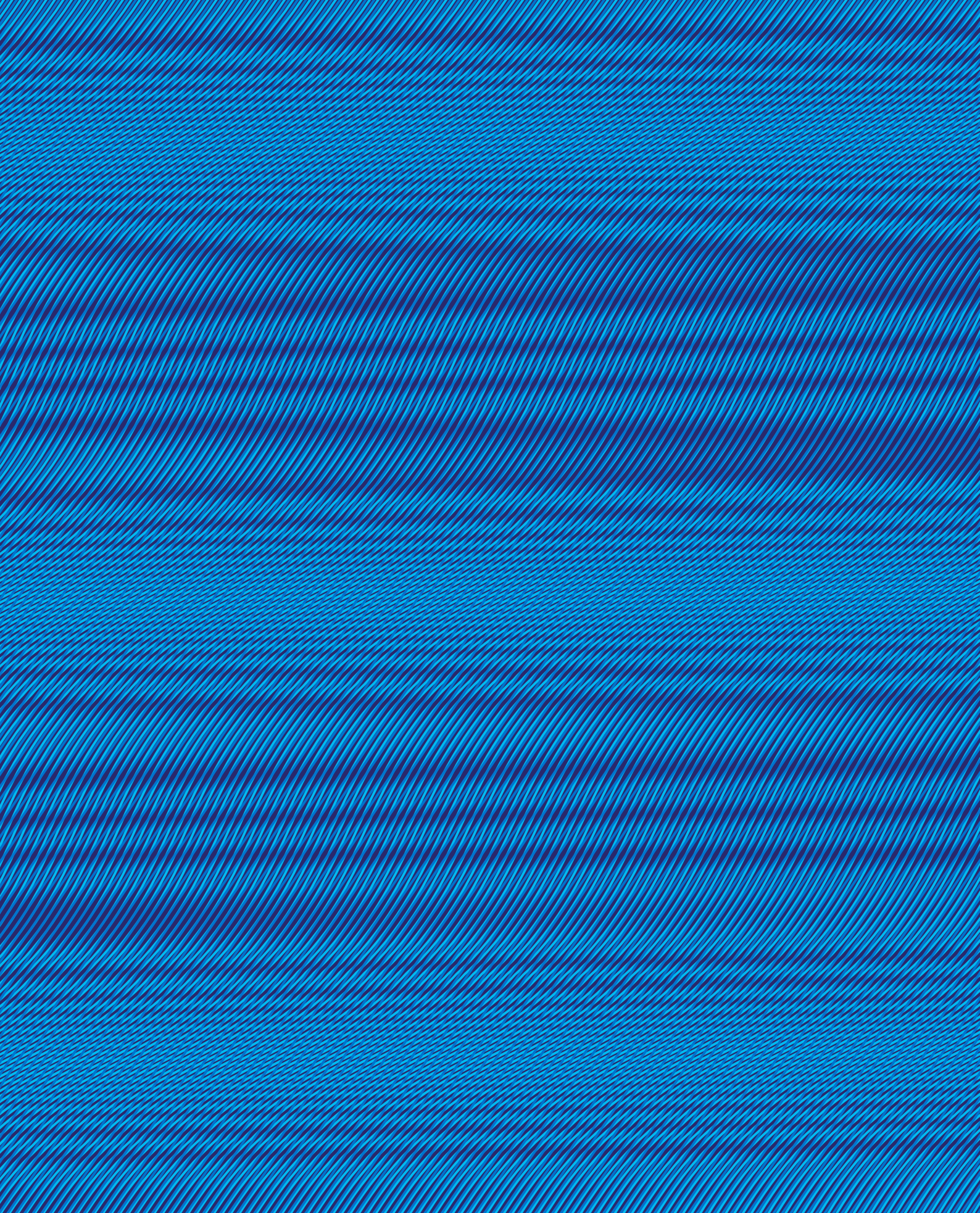




Port de Barcelona

Barcelona Cruise Facilities 2024













PRINCESS CRUISES

EMERALD PRINCESS

VREESDAM
ROTTERDAM

Barcelona Port Authority won the ESPO Award 2022 for its project “Your Port Opens Up Again”. The project involves the deeper integration of the Old Port area and the city through the completion of the reorganisation of passenger traffic. It includes transferring one ferry and two cruise terminals from the old port area to a wharf located in the commercial port exclusively dedicated to passengers and relocating a multipurpose terminal in the commercial port. The areas freed up by this move will be renovated, creating new quality spaces including green and walking areas, leisure installations and training and innovation facilities.



8^aCT-4-2-00

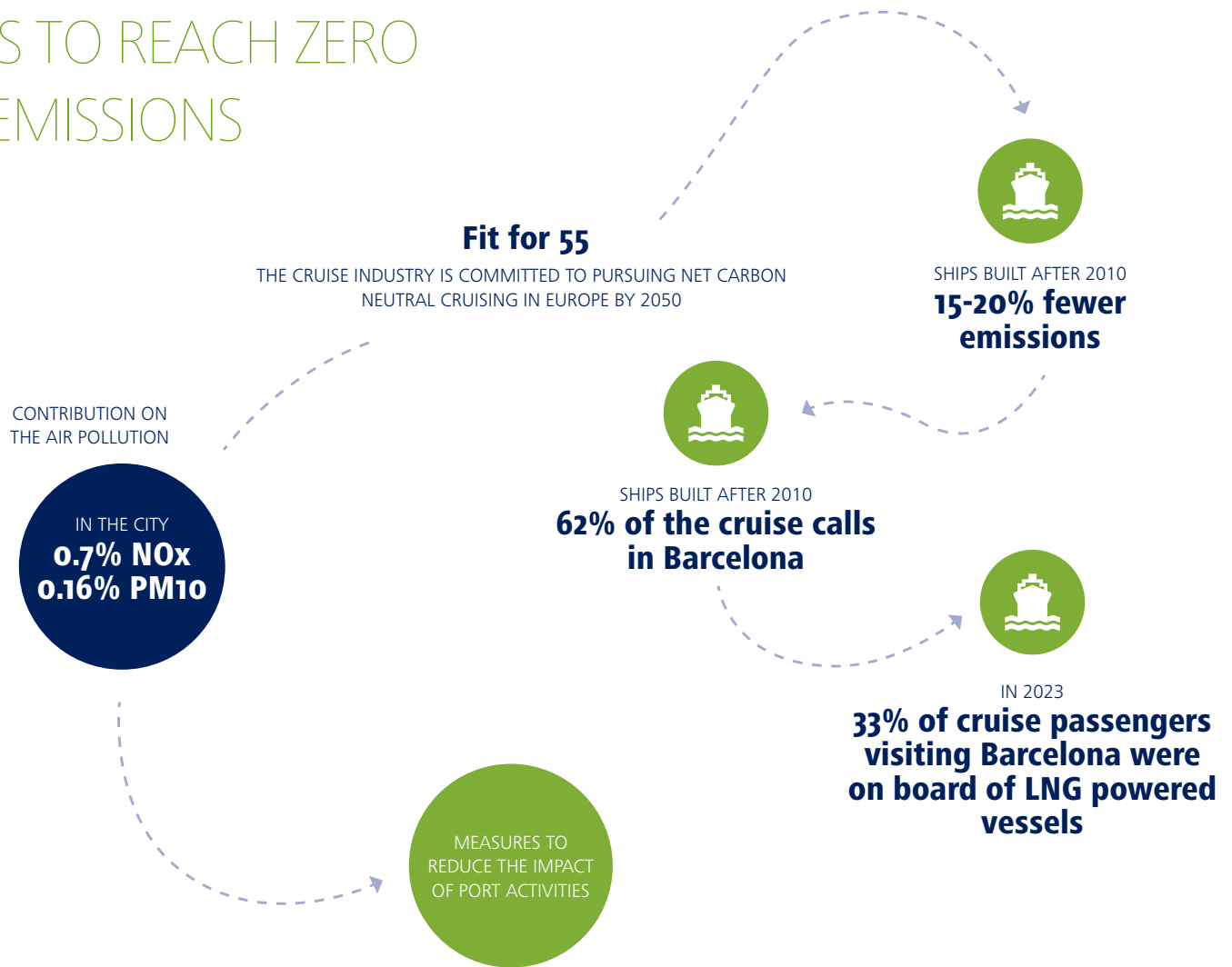
mmb MUSEU MARITIM DE BARCELONA

ENVIRONMENTAL SUSTAINABILITY

Barcelona welcomes
the most modern
and efficient ships



THE OBJECTIVE OF THE PORT OF BARCELONA IS TO REACH ZERO EMISSIONS



AIR QUALITY STUDY (BCN REGIONAL, 2019)



LNG MOBILITY:
SHIPS, TRUCKS, PORT EQUIPMENT



REBATES FOR
GREEN SHIPS



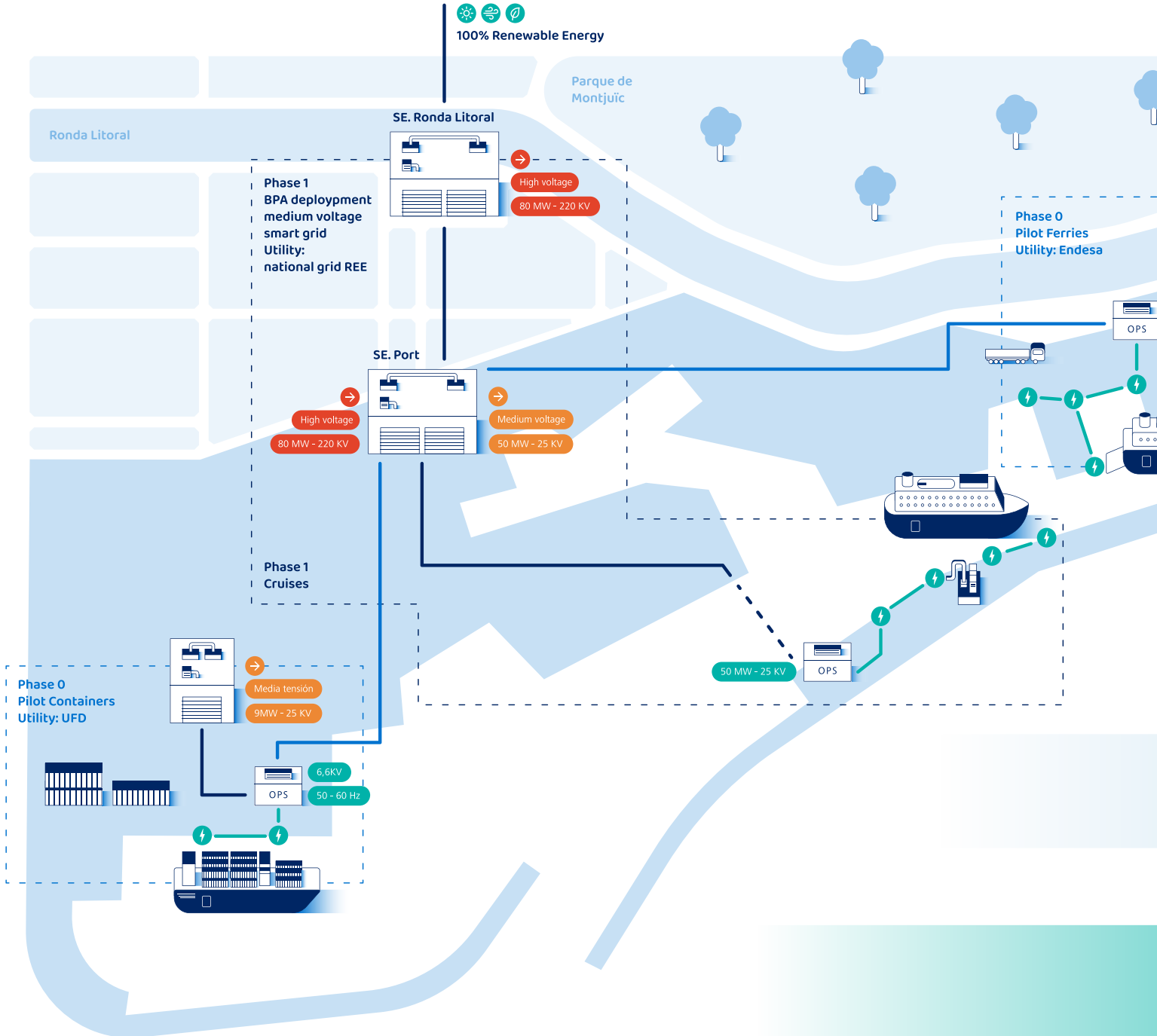
WATERFRONT
ELECTRIFICATION PROGRAM



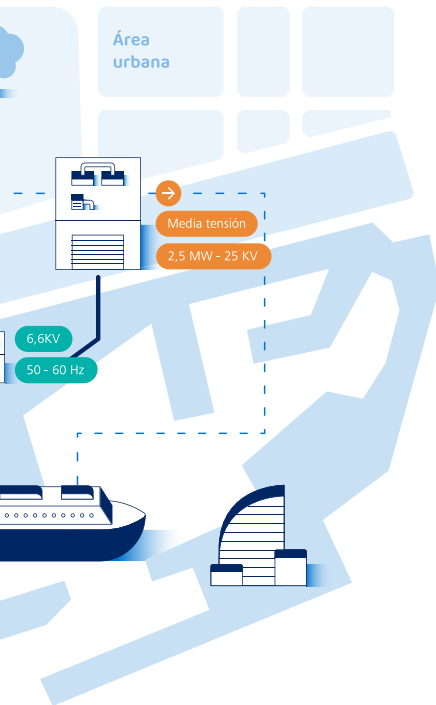
RENEWABLE ENERGY
PROGRAM SOLAR

nexigen

Electrification by Port de Barcelona



WE ARE WORKING JOINTLY WITH CRUISE LINES TO ENSURE THE PROJECT IS ALIGNED WITH ALL PARTIES.



The electrification of piers is a key Project in the Port of Barcelona’s energy transition plan. With OPS we will be able to connect ships to an smart grid providing electricity from renewable sources. Ships will be able to turn off their engines while at port.

WITH OPS WE WILL REDUCE

38%
T NOx/CALL

42%
T PM10/CALL

42%
T PM2.5/CALL

TO PROVIDE ELECTRICITY TO CRUISE SHIPS, THE PORT NEEDS

TOTAL POWER
50MW

54,000
MWH / YEAR

TOTAL INVESTMENT
34 M€



Partnership with other ports to cope with climate change



WORLD PORTS CLIMATE
ACTION PROGRAM



WORLD PORTS CLIMATE ACTION PROGRAM. Since 2018, the Port of Barcelona has joined forces with other leading global ports to fight against climate change, refining and developing tools to facilitate the reduction of CO₂ emissions from maritime transport.

SUSTAINABLE DEVELOPMENT GOALS (SDG). The Port of Barcelona is working intensely to integrate the Sustainable Development Goals (SDG) set by the United Nations in its business strategies and governance. The Port community has a strong commitment to combat climate change, economic inequality and injustice, as well as to foster inclusive employment, innovation and sustainable consumption, among others.

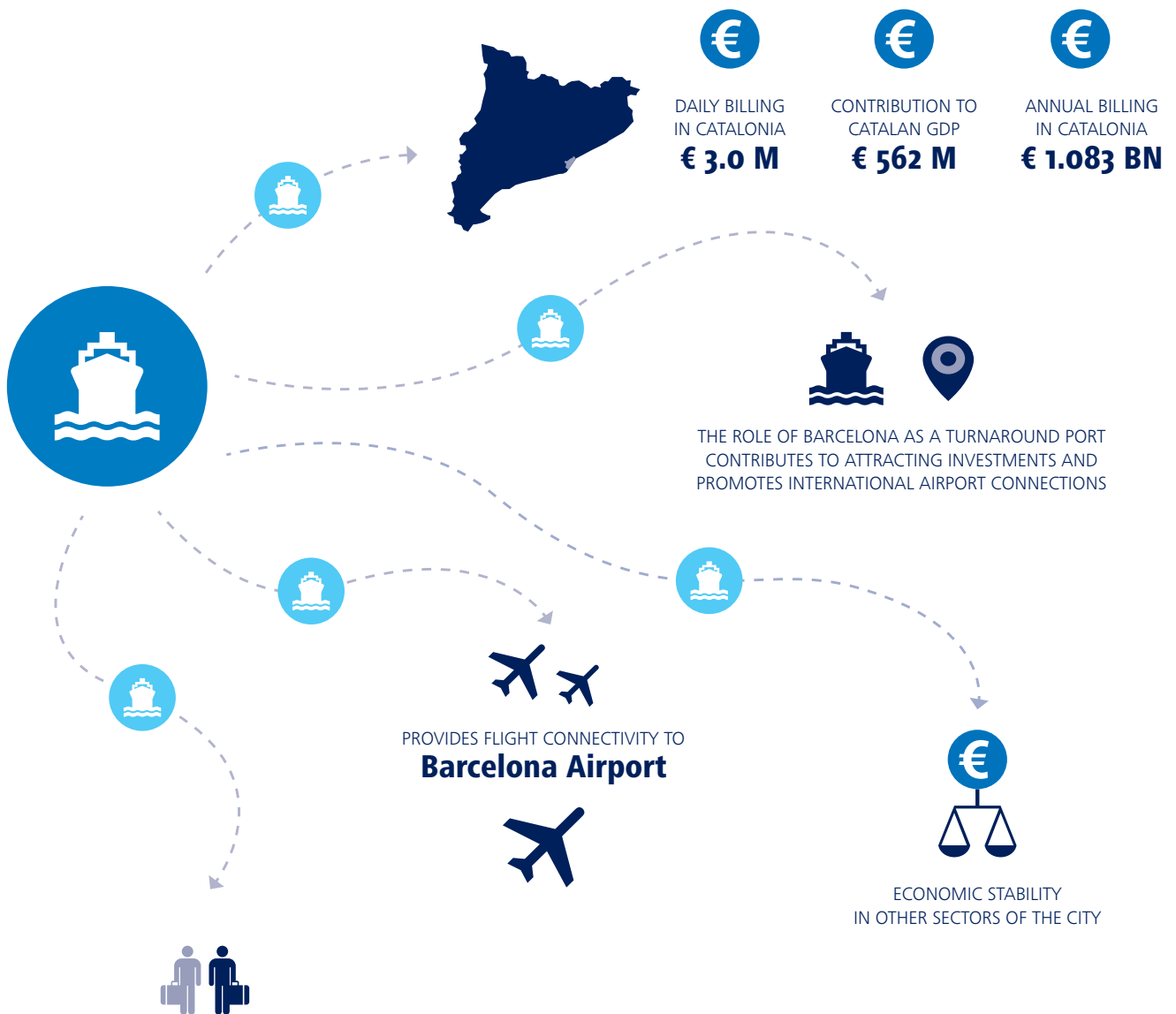
ECONOMIC SUSTAINABILITY

Port of Barcelona:
the Mediterranean turnaround
port par excellence



3 €	4 €
FRANCIA	ESPAGNE ET PORTUGAL
ITALIE	ITALIE
GRÈCE	GRÈCE
ALGERIE	ALGERIE ET TUNISIE
MAROC	MAROC ET ALGERIE
ESPAGNE	ESPAGNE ET PORTUGAL

THE CITY OF BARCELONA RECEIVES THE MAIN ECONOMIC IMPACT OF THE CRUISE BUSINESS







ALL TERMINALS IN
THE PORT ARE DESIGNED
UNDER THE LATEST REQUIREMENTS
CONCERNING SECURITY
COMFORT, FAST PROCESSING
AND ARCHITECTURAL IMAGE

SINCE WE HAVE 6 SPECIALIZED
CRUISE TERMINALS AND HIGHLY
TRAINED PROFESSIONALS, WE ARE
READY TO OPERATE WITH THE
HIGHEST LEVEL OF EFFICIENCY THE
LATEST GENERATION OF CRUISE SHIPS

BARCELONA CRUISE PORT- CREUERS TERMINALS OPERATES 4 PUBLIC CRUISE TERMINALS IN THE PORT OF BARCELONA, 1 OF THEM IN THE WORLD TRADE CENTER, LOCATED AT WALKING DISTANCE FROM THE CITY CENTER

A CONTINUOUS PERMANENT WALKWAY CONNECTS TERMINALS A, B AND C ENABLING EASY TURNAROUND OPERATIONS OF MEGA CRUISE SHIPS





WHARF AND TERMINALS CHARACTERISTICS

	TERMINAL A	TERMINAL B	TERMINAL C	TERMINAL WTCB SOUTH
WHARF	ADOSSAT	ADOSSAT	ADOSSAT	BARCELONA
INDOOR AREA	6.500 m ²	6.500 m ²	4.100 m ²	5.000 m ²
BERTHLING LINE	305 m	318 m	367 m	350 m
SHIP LENGTH	Unlimited	Unlimited	Unlimited	253 m
DRAFT	11 m	10,2 m	11,4 m	8 m
WHARF WIDTH	22 m	22 m	23 m	14 m
WHARF HEIGHT	2,1 m	2,1 m	2,1 m	2,5 m
TURNAROUND	4.500	4.500	3.800	1.400
DISTANCE FROM THE CITY	2 km	2 km	2,5 km	400 m

GENERAL SERVICES

	TERMINAL A	TERMINAL B	TERMINAL C	TERMINAL WTCB SOUTH
POLICE - IMMIGRATION	•	•	•	•
METAL DETECTORS - X-RAY MACHINES	•	•	•	•
AIR CONDITIONING	•	•	•	•
PASSENGER GANGWAYS	•	•	•	•
LUGGAGE CONVEYORS	•	•	-	•
LUGGAGE HANDLING	•	•	•	•
LUGGAGE DELIVERY TO FINAL DESTINATION	•	•	•	•
PUBLIC TELEPHONES	-	-	-	-
FOREIGN EXCHANGE	-	-	-	-
DUTY FREE SHOPS	•	•	•	•
BAR - RESTAURANT	-	•	•	•
WIF-FI	•	•	•	•
VIP LOUNGE	•	•	-	-
CREW MEMBERS ROOM	-	•	-	-
SHUTTLE BUS TO CITY CENTRE	•	•	•	-
TAXI RANK	•	•	•	•

SHIP SERVICES

	TERMINAL A	TERMINAL B	TERMINAL C	TERMINAL WTCB SOUTH
FRESH WATER SUPPLY	•	•	•	•
ON-BOARD ID TELEPHONE CONNECTIONS	•	•	•	•
COMPUTER CONNECTIONS FOR IN-BOND OPERATIONS	•	•	•	•
WASTE AND GARBAGE DISPOSAL	•	•	•	•
SEWAGE DISPOSAL	•	•	•	•
RECYCLING	•	•	•	•





TERMINALS D AND E WERE THE FIRST TO BE AUTHORIZED FOR TRUCK TO SHIP (TTS) AND SHIP TO SHIP (STS) LNG OPERATIONS IN THE PORT THE BARCELONA

TERMINAL E, HELIX CRUISE CENTER, IS WHERE THE CRUISE EXPERIENCE STARTS. PROVIDING SECURITY, EFFICIENT PROCESSES AND ALL ROUND COMFORT FOR CRUISE LINES GUESTS AND CREWMEMBERS



WHARF AND TERMINALS CHARACTERISTICS

	TERMINAL D PALACRUCEROS	TERMINAL E HELIX
WHARF	ADOSSAT	ADOSSAT
INDOOR AREA	10.000 m ²	12.500 m ²
BERTHLING LINE	425 m	475 m
SHIP LENGTH	Unlimited	Unlimited
DRAFT	12,3 m	11,1 m
WHARF WIDTH	22 m	26 m
WHARF HEIGHT	2,1 m	2,1 m
TURNAROUND	4.500	6.000
DISTANCE FROM THE CITY	2,5 km	3 km

GENERAL SERVICES

	TERMINAL D PALACRUCEROS	TERMINAL E HELIX
POLICE - IMMIGRATION	•	•
METAL DETECTORS - X-RAY MACHINES	•	•
AIR CONDITIONING	•	•
PASSENGER GANGWAYS	•	•
LUGGAGE CONVEYORS	-	-
LUGGAGE HANDLING	•	•
LUGGAGE DELIVERY TO FINAL DESTINATION	•	•
PUBLIC TELEPHONES	-	-
FOREIGN EXCHANGE	-	-
DUTY FREE SHOPS	-	-
BAR - RESTAURANT	-	-
WI-FI	•	•
VIP LOUNGE	•	•
CREW MEMBERS ROOM	•	•
SHUTTLE BUS TO CITY CENTRE	•	•
TAXI RANK	•	•

SHIP SERVICES

	TERMINAL D PALACRUCEROS	TERMINAL E HELIX
FRESH WATER SUPPLY	•	•
ON-BOARD ID TELEPHONE CONNECTIONS	•	•
COMPUTER CONNECTIONS FOR IN-BOND OPERATIONS	•	•
WASTE AND GARBAGE DISPOSAL	•	•
LNG SUPPLY	•	•
SEWAGE DISPOSAL	•	•
RECYCLING	•	•

SAFETY AND SECURITY ARE
OF THE UPMOST IMPORTANCE FOR
THE PORT OF BARCELONA. OUR
TERMINALS COMPLY FULLY WITH
IMO & EU REQUIREMENTS











AIRPORT





JT BARCELONA-EL PRAT AIRPORT IS A MODERN AND FUNCTIONAL SPACE
WITH TWO PASSENGER TERMINALS

HUGE POTENTIAL FOR GROWTH IN INTERCONTINENTAL ROUTES THROUGH
COLLABORATION BETWEEN BARCELONA AIRPORT, PORT OF BARCELONA,
BARCELONA ROUTE DEVELOPMENT COMMITTEE (BARDC) AND TOURISM
AUTHORITIES

PASSENGERS

41.6 million

TOTAL PAX

+120.6% (VS 2021)

79% RECOVERY OF 2019 LEVELS

29.4 million

INTERCONTINENTAL PAX

+162.1% (VS 2021)

76,2% RECOVERY OF 2019 LEVELS

(PROVISIONAL DATA 2022)

AIRLINES

+60

AIRLINES

DESTINATIONS

+160

DESTINATIONS

+100

EUROPEAN DESTINATIONS

43

INTERCONTINENTAL DESTINATIONS

66

INTERCONTINENTAL ROUTES

DIRECT FLIGHTS TO MAIN INTERNATIONAL AIRPORTS

Schedule 2022

NORTH AMERICA

DEPARTURE	DESTINATION	AIRLINE
BARCELONA	ATLANTA	DELTA
BARCELONA	BOSTON	LEVEL
BARCELONA	LOS ÁNGELES	LEVEL
BARCELONA	MIAMI	AMERICAN AIRLINES
BARCELONA	NUEVA YORK (EWR)	UNITED
BARCELONA	NUEVA YORK (JFK)	DELTA / AMERICAN AIRLINES / LEVEL
BARCELONA	FILADELFIA	AMERICAN AIRLINES
BARCELONA	SAN FRANCISCO	LEVEL
BARCELONA	WASHINGTON	UNITED
BARCELONA	CHICAGO	AMERICAN AIRLINES
BARCELONA	MONTREAL	AIR CANADA / AIR TRANSAT
BARCELONA	TORONTO	AIR CANADA / WESTJET / AIR TRANSAT

SOUTH AMERICA

DEPARTURE	DESTINATION	AIRLINE
BARCELONA	BOGOTÁ	AVIANCA
BARCELONA	BUENOS AIRES (EZE)	LEVEL
BARCELONA	SAO PAULO (GRU)	LATAM LINHAS AEREAS
BARCELONA	MÉXICO	EMIRATES
BARCELONA	CANCÚN	LEVEL
BARCELONA	PUNTA CANA	LEVEL
BARCELONA	SANTIAGO DE CHILE	LEVEL

MIDDLE EAST

DEPARTURE	DESTINATION	AIRLINE
BARCELONA	TEL AVIV	EL AL / VUELING / ARKIA ISRAELI AIRLINES / BLUE BIRD
BARCELONA	ABU DABI	ETIHAD
BARCELONA	DUBAI	EMIRATES
BARCELONA	DOHA	QATAR AIRWAYS
BARCELONA	RIYADH	SAUDI ARABIAN
BARCELONA	JEDDAH	SAUDI ARABIAN

FAR EAST

DEPARTURE	DESTINATION	AIRLINE
BARCELONA	SINGAPUR	SINGAPORE AIRLINES
BARCELONA	SEÚL	ASIANA AIRLINES, KOREAN AIR

Barcelona AIRPORT



13KM

DISTANCE FROM THE CITY



TRANSPORT LINKS

Barcelona CITY CENTER



TERMINALS

A • B • C • D PALACRUCEROS • E HELIX • G • H • S WTC





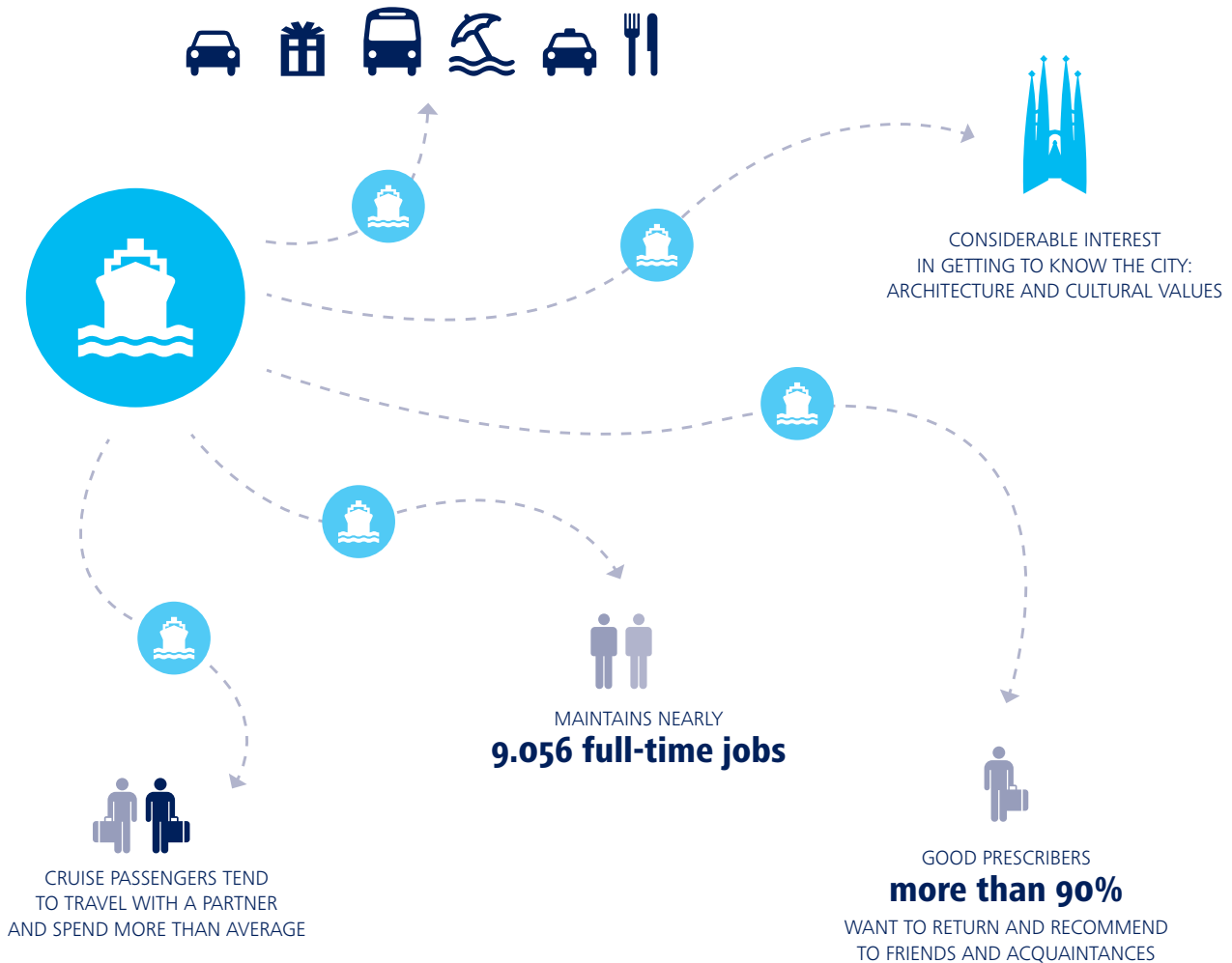


SOCIAL SUSTAINABILITY

Coordination among
the city and the country:
Barcelona Tourism
Board and Catalonia
Tourist Board



BENEFITS SECTORS LINKED TO TOURISM
AND TO OTHER INDUSTRIAL AND SERVICE SECTORS



THE CRUISE BUSINESS IN CATALONIA
GENERATES MORE THAN 9.000 FULL-TIME
JOBS, INCLUDING SECTORS NOT INVOLVED
IN TOURIST ACTIVITIES



BARCELONA



Barcelona in figures



www.barcelonaismuchmore.com

KEYS FIGURES

1.66 million

INHABITANTS

18.1 °C

AVERAGE TEMPERATURE
MILD CLIMATE ALL YEAR ROUND

75.6 Km

OF BEACHES

RANKING AS A TOURIST DESTINATION

1st

SOUTHERN EUROPEAN CITY WITH THE
BEST FUTURE PROSPECTS 2020/21 (FDI)

4th

MOST SPORTING CITY IN THE WORLD
(RANKING OF SPORTS CITIES 2021)

3rd

FAVOURITE EUROPEAN CITY FOR
ESTABLISHING A START-UP

4th

MOST INNOVATIVE CITY IN EUROPE
(INNOVATION CITIES INDEX 2019)

1st

BEST CITY TO VISIT
(THE TELEGRAPH TRAVEL 2022)

ACCOMMODATION

883 HOTELS - **142,804** BEDS • **21,280** HOMES FOR TOURIST USE - **122,025** BEDS

COMMUNICATIONS AND TRANSPORT LINKS

+70

AIRLINES

+150

DESTINATIONS

45

INTERCONTINENTAL DESTINATIONS

8

HIGH SPEED INTERNATIONAL TRAIN
DESTINATIONS

CULTURE AND LEISURE

76

MUSEUMS AND CULTURAL CENTERS

189

FESTIVALS

3

BIG AUDITORIUMS

9

UNESCO WORLD HERITAGE SITES

3

UNESCO INTANGIBLE CULTURAL
HERITAGE

TOURIST OPINION RATING

SOURCE: Observatori del Turisme a Barcelona: ciutat i regió 2022.
www.observatorituristic.barcelona/en

9,3

ARCHITECTURE

9,0

CULTURE

8,8

GLOBAL EVALUATION OF THE MUNICIPALITY

8,6

ENTERTAINMENT

8,0

PUBLIC SAFETY

7,9

ACCESSIBILITY

BARCELONA IS ONE OF THE 10 CITIES IN THE WORLD WHICH MUST BE VISITED ONCE IN A LIFETIME

NATIONAL GEOGRAPHIC MAGAZINE



IMAGES: 1, 2, 4, 7, 8, 9 © Turisme de Barcelona / 3 © Oscar Rodbag Fund-Cardona Històrica / 5 © S.Boixader / 6 © Albert Miró- DiBa

1. UNIQUE ARCHITECTURE – 2000 years of heritage – **2. 22@** – Historic industrial and residential district transformed into a knowledge and innovation hub – **3. CARDONA** – Medieval castle and tradition, the Salt Mountain Cultural Park – **4. PERSONAL SHOPPERS TOURS** – A variety of local shops and global brands – **5. MOUNT MONTSERRAT** Natural Park and Benedictine Abbey – **6. COLONIA GÜELL** – A modernist textile colony and Gaudí’s Crypt, his best kept secret – **7. WINE REGION**, with more than 300 wineries – **8. SITGES** – The perfect combination of Modernism and bohemian life, just minutes away from Barcelona on the shores of the Mediterranean – **9. CULINARY AND COOKING EXPERIENCES** – Discover Catalan gastronomy and become a true chef.



CATALONIA



Catalonia in figures



www.catalunya.com

KEYS FIGURES

44

WORLD HERITAGE SITES

400

MUSEUMS AND ART GALLERIES

65

MICHELIN STARS RESTAURANTS

12

DENOMINATIONS OF ORIGIN
OF WINE AND CAVA

4

INTERNATIONAL AIRPORTS

5,000 km

OF ROADS AND
LONG-DISTANCE TRAILS

4,000

LOCAL TRAILS

580 km

OF MEDITERRANEAN COAST

54

PORTS AND YACHT CLUBS

More than 30%

OF PROTECTED TERRITORY

20

PARKS AND NATURAL SPACES

**Responsible Tourism
Biosphere Certification**

CATALONIA IS A MEDITERRANEAN DESTINATION
WITH AN ANCIENT HISTORY, CULTURE,
GASTRONOMY AND NATURE. DISCOVER IT:
FAMILY, SPORTS AND BUSINESS TOURISM



© Agència Catalana de Turisme

Barcelona is the capital of Catalonia. The land of Miró and Dalí. A land with a Mediterranean tradition and a rich historical heritage. The modernist art of Gaudí and Domènech i Montaner, Poblet Monastery, the Romanesque churches of the Boí Valley and the Roman archaeological site of Tarragona have all been declared World Heritage Sites by UNESCO. A land of history and art, Mediterranean atmosphere, refined cuisine and pleasant climate are also appealing to visitors.

The National Commitment for Responsible Tourism is the tool that allows the catalan government to implement a model that is environmentally responsible, socially fair, territorially balanced and reconnected with the country's identity elements. On this path, the Catalan tourism sector sets itself the following objectives: the fight against climate change, the preservation of biodiversity, universal access to destinations, the improvement of the quality of employment and the decarbonisation of employment economy.

Catalonia will be the World Region of Gastronomy in 2025. It will thus become the first European region to receive this distinction. This recognition reaffirms the consolidation of an innovative and regenerative tourism model, where Catalonia's gastronomic revolution has gone beyond restaurants and has opened the doors to discover the region and the local and unique food production







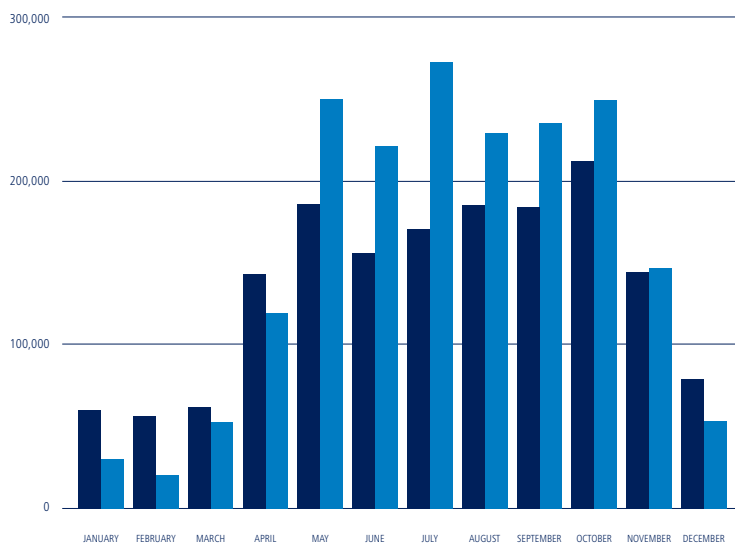
AIDA Sol
GENOVA

COSTA FAVOLOSA

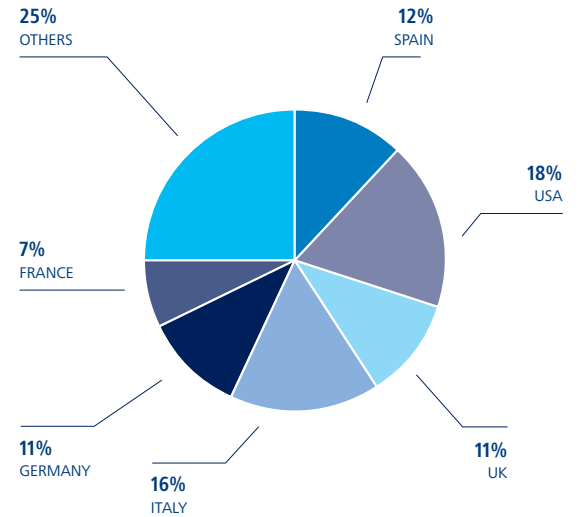
OPERATIONS 2023

	CALLS	EMBARKING	DISEMBARKING	TRANSIT	TOTAL PAX
JANUARY	26	16,648	15,004	61,369	93,021
FEBRUARY	20	10,614	11,275	57,927	79,816
MARCH	31	31,777	22,503	63,278	117,558
APRIL	79	55,844	65,601	145,232	266,677
MAY	117	121,051	131,581	188,137	440,769
JUNE	73	109,531	114,227	157,974	381,732
JULY	77	134,884	140,696	172,672	448,252
AUGUST	75	117,101	114,682	187,519	419,302
SEPTEMBER	91	121,356	116,781	186,220	424,357
OCTOBER	106	127,727	124,475	214,488	466,690
NOVEMBER	76	72,760	76,069	146,368	295,197
DECEMBER	32	27,779	26,891	80,860	135,530
TOTAL	803	947,072	959,785	1,662,044	3,568,901

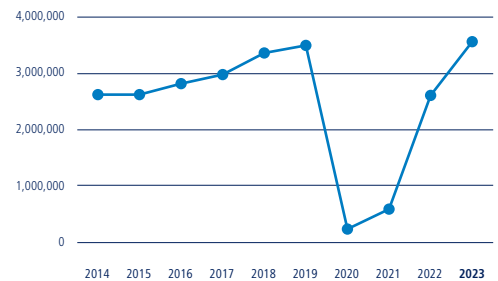
PASSENGERS 2023 / • Transit • Turnaround



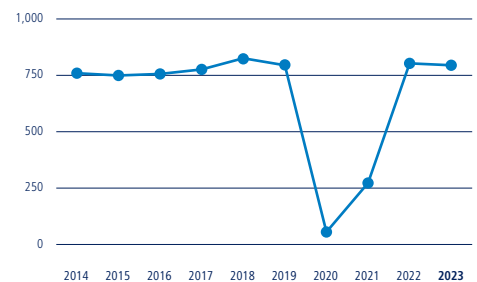
CRUISE PASSENGER NATIONALITIES 2022



CHANGE IN PASSENGER NUMBERS (2014 - 2023)



CHANGE IN CALL NUMBERS (2014 - 2023)



TERMINAL OPERATORS

BARCELONA CRUISE PORT - CREUERS TERMINALS

Estació Marítima Sud. Edifici WTC Barcelona
Moll de Barcelona, s/n. 08039 Barcelona
T +34 93 412 79 14 / F +34 93 317 31 69
contact@bcncruiseport.com
www.bcncruiseport.com

BARCELONA CRUISE TERMINAL

Terminal E, HELIX
Moll Adossat, s/n. 08039 Barcelona
T +34 93 225 62 98
bct_operations@es.costal.it

CRUISE AGENTS

BALEARES CONSIGNATARIOS, SL

Via Laietana, 15, ppal 1-2, 08003 Barcelona
T +34 93 319 63 18 - F +34 93 319 01 09
barcelona@bcagency.net
www.bcbagency.net

ESTELA SHIPPING

Buenaventura Muñoz, 15, entlo 4, 08018 Barcelona
T +34 93 485 38 69
barcelona@estelashipping.net
www.estelashipping.es

GLOBAL PORTS HOLDING PLC

Estació Marítima Sud. Edifici WTC Barcelona
Moll de Barcelona, s/n. 08039 Barcelona
T +34 93 442 21 53
operationsbcn@globalportsholding.com
www.bcncruiseport.com

INTERCRUISES

Moll de Barcelona s/n
Diputació, 238, 3º, 08007 Barcelona
T +34 93 297 29 00 - F +34 93 318 81 18
i.intercruises@intercruises.com
www.intercruises.com

MEDITERRANEAN SHIPPING CRUISES

Foc, 30-36, 08038 Barcelona
T +34 93 508 23 00
es048-bcnpax@msc.com
www.msccruises.com

MH BLAND

Calle Doctor Trueta 179, Bloque F, 2º
Oficina 7, 08005, Barcelona, Spain.
T +34 93 797 93 31 - F +34 93 880 69 30
operationsbcn@globalportsholding.com
www.bcncruiseport.com

NOATUM CRUISE SERVICES

Pº de la Zona Franca, 111 Torre Auditori - 08038 Barcelona (Spain)
T +34 93 298 77 77
cruises@noatummaritime.com
https://noatumcruiseservices.com

PÉREZ & CÍA

Mallorca, 260, 08003 Barcelona
T +34 93 481 73 10
cruisesandyachts@cruises.perezycia.com
www.perezycia.com

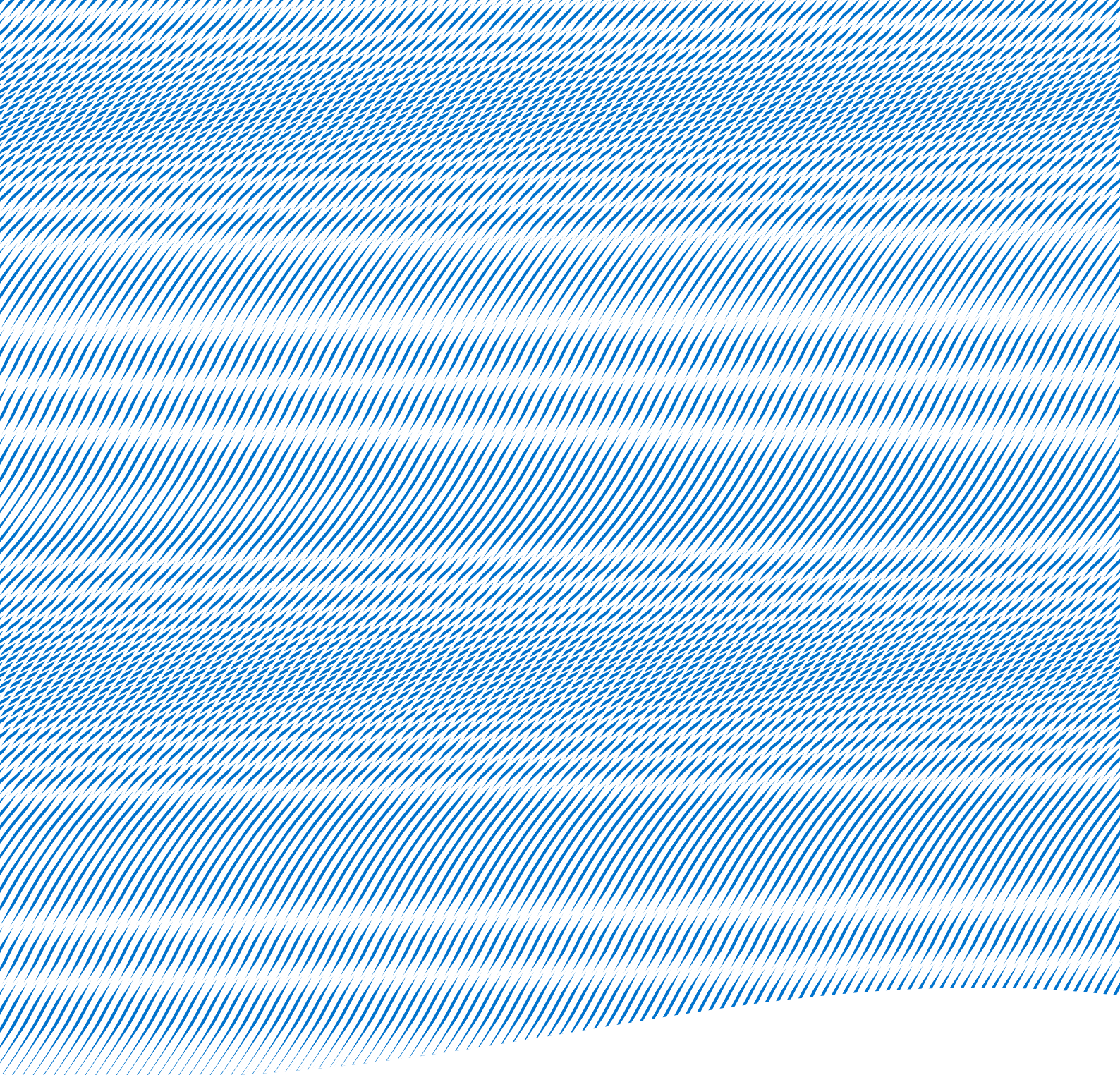
TRANSCOMA CRUISE & TRAVEL, SL

Carrer Atlàntic, 112-120 (ZAL), 08040 Barcelona
T +34 93 344 25 00 - F +34 93 412 50 93
barcelona@transcomacruises.com
www.transcomacruises.com

CRUISE LINES

- AIDA CRUISES
- AZAMARA CRUISES
- BALANDA MARITIME COMPANY
- BERNHARD SHULTE SHIP MANAGEMENT
- CARNIVAL CRUISE LINES
- CELEBRITY CRUISES
- CIE. DES ILES DU PONANT
- COSTA CROCIERE, SPA
- CRYSTAL CRUISES INC.
- CUNARD LINE
- DISNEY CRUISE LINE
- EXPLORA JOURNEYS
- FTI CRUISES HELLAS LTD.
- GLOBAL CRUISE LINES LTD.
- GRAND CIRCLE CRUISE LINE D.O.O
- HAPAG-LLOYD CRUISESHIP
- HOLLAND AMERICA LINE
- MAJESTIC
- MYSTIC CRUISES, SL
- MSC CRUISES, SA
- NORWEGIAN CRUISE LINE
- OCEANIA CRUISES
- P&O CRUISES
- PRINCESS CRUISES
- REGENT SEVEN SEAS CRUISES INC
- RESIDENTSEA
- ROYAL CARIBBEAN CRUISES LTD.
- SEA CLOUD CRUISES
- SEABOURN CRUISES LINE LTD.
- SEADREAM YATCH CLUB
- SILVERSEA CRUISES
- THE RITZ-CARLTON YACHT COLLECTION
- TUI CRUISES GMBH
- TUI UK LTD.
- V SHIPS LEISURE SAM
- VIKING OCEAN CRUISES SHIP
- VIRGIN VOYAGES
- WINDSTAR SAIL CRUISE LTD.





Port de Barcelona

www.portdebarcelona.cat

WTC Barcelona, edifici Est
Moll de Barcelona, s/n
08039 Barcelona
T 93 298 21 00