

**Port of Barcelona traffic statistics**

**Accumulated data November 2023**

**Statistics Service**

## Index

---

### Traffic indicators

Total traffic	3
Main indicators	4
Breakdown of total traffic	5
Breakdown of traffic in transit	6
Monthly evolution of traffic	7

### Container traffic

TEU evolution	8
Container traffic (TEU)	9

### Passenger traffic

Passenger traffic	10
Passenger classification	11

### Automobile traffic

Automobile traffic	12
--------------------	----

### Short Sea Shipping traffic (SSS)

SSS Goods classification	13
SSS General cargo and Motorways of the sea (MoS)	14
SSS Ranking countries	15

### Vessel traffic

Vessel traffic	16
----------------	----

### Goods traffic

Mode of packaging and navigation	17
Goods by classification 4.3.7.	18
Goods ranking	19
Containerized goods by classification 4.3.7.	20

### Maritime traffic by origin/destination

Geographical areas. Tonnes	21
Geographical areas. Full TEU non transit	22
Ranqing countries. Full TEU non transit	23

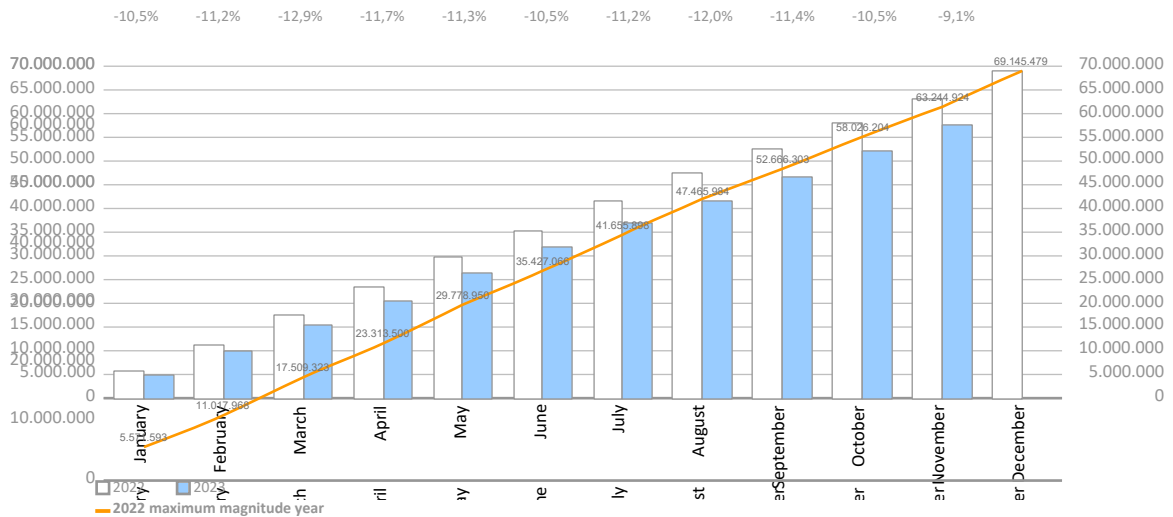
### Railway traffic

Evolution of railway traffic (TEU and automobile)	24
Evolution of railway traffic (Solid and liquid bulk)	25
Railway gauge traffic	25

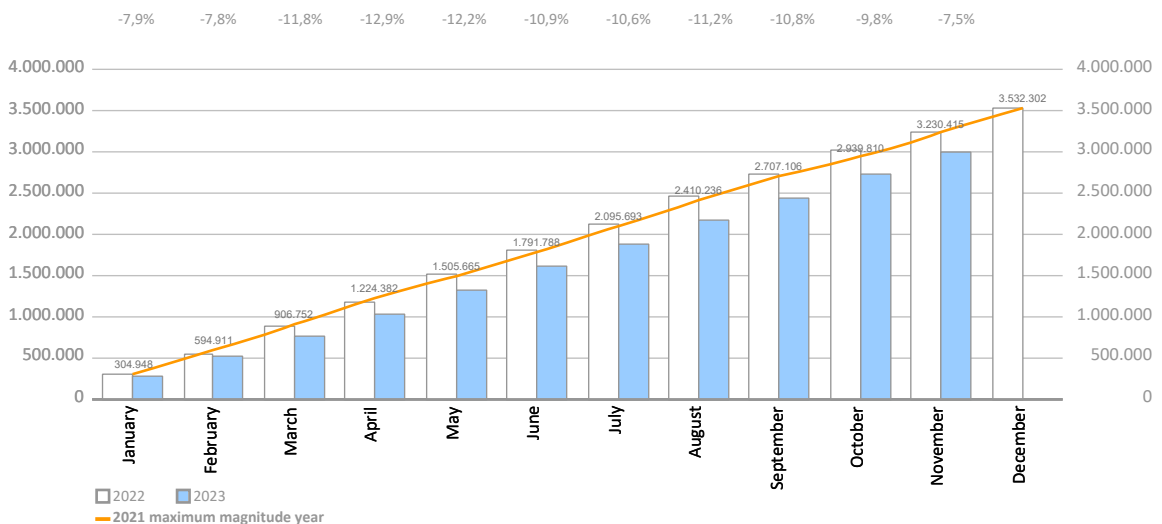
# TRAFFIC INDICATORS

Total traffic	Monthly accumulated				% 23-22 accum. October	% 23-22 accum. September	Total traffic 2022
	2022	2023	Diff. 23-22	%			
<b>Total throughput (tonnes)</b>	<b>63.244.924</b>	<b>57.474.059</b>	<b>-5.770.865</b>	<b>-9,1%</b>	<b>-10,5%</b>	<b>-11,4%</b>	<b>69.145.479</b>
Supplies	1.732.528	1.536.638	-195.890	-11,3%	-16,8%	-17,0%	1.854.561
Fishing	3.117	1.518	-1.599	-51,3%	-52,0%	-51,1%	3.201
<b>TOTAL TRAFFIC (tonnes)</b>	<b>64.980.569</b>	<b>59.012.215</b>	<b>-5.968.354</b>	<b>-9,2%</b>	<b>-10,7%</b>	<b>-11,6%</b>	<b>71.003.242</b>
<b>TEU</b>	<b>3.244.842</b>	<b>2.999.944</b>	<b>-244.898</b>	<b>-7,5%</b>	<b>-9,8%</b>	<b>-10,8%</b>	<b>3.525.043</b>
<b>UTI</b>	<b>390.844</b>	<b>386.841</b>	<b>-4.003</b>	<b>-1,0%</b>	<b>-1,0%</b>	<b>-1,2%</b>	<b>419.191</b>
<b>Automobiles (units)</b>	<b>506.093</b>	<b>723.838</b>	<b>217.745</b>	<b>43,0%</b>	<b>48,0%</b>	<b>56,0%</b>	<b>591.158</b>
<b>Vessels (units)</b>	<b>8.004</b>	<b>8.113</b>	<b>109</b>	<b>1,4%</b>	<b>1,6%</b>	<b>1,8%</b>	<b>8.713</b>
<b>Railway traffic (units)</b>	<b>10.410</b>	<b>9.693</b>	<b>-717</b>	<b>-6,9%</b>	<b>-7,9%</b>	<b>-9,0%</b>	<b>11.234</b>
<b>Cruise passengers (units)</b>	<b>2.225.811</b>	<b>3.433.371</b>	<b>1.207.560</b>	<b>54,3%</b>	<b>53,6%</b>	<b>59,7%</b>	<b>2.334.305</b>
<b>Ferry passengers (units)</b>	<b>1.505.784</b>	<b>1.643.281</b>	<b>137.497</b>	<b>9,1%</b>	<b>9,2%</b>	<b>9,0%</b>	<b>1.596.267</b>
<b>Automobile passengers (units)</b>	<b>457.433</b>	<b>486.860</b>	<b>29.427</b>	<b>6,4%</b>	<b>6,3%</b>	<b>5,8%</b>	<b>484.993</b>

Monthly evolution of the accumulated traffic of goods. Tonnes



Monthly evolution of the accumulated traffic of goods. TEU



## TRAFFIC INDICATORS

Main indicators	Monthly accumulated				Last 12 months	Total traffic 2022	% 12 months-2022
	2022	2023	Diff. 23-22	%			

### Goods indicators by navigation and operation (tonnes)

	2022	2023	Diff. 23-22	%	Last 12 months	Total traffic 2022	% 12 months-2022
<b>Navigation (t)</b>	<b>63.244.924</b>	<b>57.474.059</b>	<b>-5.770.865</b>	<b>-9,1%</b>	<b>63.374.614</b>	<b>69.145.479</b>	<b>-8,3%</b>
Domestic	7.674.799	7.500.720	-174.079	-2,3%	8.112.138	8.286.217	-2,1%
Foreign	55.570.125	49.973.339	-5.596.786	-10,1%	55.262.476	60.859.262	-9,2%
<b>Operation (t)</b>	<b>63.244.924</b>	<b>57.474.059</b>	<b>-5.770.865</b>	<b>-9,1%</b>	<b>63.374.614</b>	<b>69.145.479</b>	<b>-8,3%</b>
Loaded	18.554.947	17.784.287	-770.660	-4,2%	19.446.330	20.216.990	-3,8%
Unloaded	21.135.577	20.986.079	-149.498	-0,7%	23.165.743	23.315.242	-0,6%
Transit	23.554.400	18.703.692	-4.850.707	-20,6%	20.762.540	25.613.248	-18,9%

### Goods indicators by main units

	2022	2023	Diff. 23-22	%	Last 12 months	Total traffic 2022	% 12 months-2022
<b>Containers (TEU)</b>	<b>3.244.842</b>	<b>2.999.944</b>	<b>-244.898</b>	<b>-7,5%</b>	<b>3.280.145</b>	<b>3.525.043</b>	<b>-6,9%</b>
TEU O/D	1.804.548	1.802.559	-1.989	-0,1%	1.970.766	1.972.755	-0,1%
TEU transit	1.440.294	1.197.385	-242.909	-16,9%	1.309.379	1.552.288	-15,6%
Containerized tonnes	34.788.558	30.695.830	-4.092.728	-11,8%	33.533.277	37.626.005	-10,9%
Level of containerization	76,75%	74,62%			74,79%	76,75%	
<b>Passengers (u)</b>	<b>3.731.595</b>	<b>5.076.652</b>	<b>1.345.057</b>	<b>36,0%</b>	<b>5.275.629</b>	<b>3.930.572</b>	<b>34,2%</b>
Regular line	1.505.784	1.643.281	137.497	9,1%	1.733.764	1.596.267	8,6%
Pleasure cruises	2.225.811	3.433.371	1.207.560	54,3%	3.541.865	2.334.305	51,7%
<b>Automobiles (u)</b>	<b>506.093</b>	<b>723.838</b>	<b>217.745</b>	<b>43,0%</b>	<b>808.903</b>	<b>591.158</b>	<b>36,8%</b>
Loaded	284.821	380.228	95.407	33,5%	423.286	327.879	29,1%
Unloaded	147.351	242.397	95.046	64,5%	273.732	178.686	53,2%
Transit	73.921	101.213	27.292	36,9%	111.885	84.593	32,3%
<b>Vessels (u)</b>	<b>8.004</b>	<b>8.113</b>	<b>109</b>	<b>1,4%</b>	<b>8.822</b>	<b>8.713</b>	<b>1,3%</b>
Number of calls	8.004	8.113	109	1,4%	8.822	8.713	1,3%
GT	323.703.362	348.558.463	24.855.101	7,7%	375.729.849	350.874.748	7,1%
Average tonnes by vessel	7.902	7.084	-817	-10,3%	7.184	7.936	-9,5%
<b>UTI</b>	<b>390.844</b>	<b>386.841</b>	<b>-4.003</b>	<b>-1,0%</b>	<b>415.188</b>	<b>419.191</b>	<b>-1,0%</b>
Domestic	236.954	243.582	6.629	2,8%	260.303	253.675	2,6%
% Full	61,3%	61,9%			61,8%	61,3%	
Foreign	153.890	143.259	-10.632	-6,9%	154.885	165.516	-6,4%
% Full	92,7%	91,6%			91,7%	92,7%	

# TRAFFIC INDICATORS

Breakdown of total traffic (tonnes)	Monthly accumulated				% 23-22 accum. October	% 23-22 accum. September	% of total accum. 2023
	2022	2023	Diff. 23-22	%			
<b>Goods indicators by type of packaging (t)</b>	<b>63.244.924</b>	<b>57.474.059</b>	<b>-5.770.865</b>	<b>-9,1%</b>	<b>-10,5%</b>	<b>-11,4%</b>	<b>100%</b>
<b>Liquid bulk</b>	<b>13.840.870</b>	<b>11.898.147</b>	<b>-1.942.723</b>	<b>-14,0%</b>	<b>-13,9%</b>	<b>-16,2%</b>	<b>20,7%</b>
<b>Hydrocarbons</b>	<b>10.680.532</b>	<b>8.724.609</b>	<b>-1.955.922</b>	<b>-18,3%</b>	<b>-18,2%</b>	<b>-21,0%</b>	<b>15,2%</b>
Natural gas	3.469.684	2.957.126	-512.557	-14,8%	-15,7%	-20,7%	5,1%
Petrol	3.060.771	2.472.614	-588.157	-19,2%	-17,3%	-24,0%	4,3%
Diesel oils	2.243.901	1.951.232	-292.669	-13,0%	-11,0%	-6,1%	3,4%
Fuel oil	1.529.799	1.079.383	-450.416	-29,4%	-28,4%	-26,2%	1,9%
Other petroleum products	356.543	243.384	-113.159	-31,7%	-50,2%	-58,6%	0,4%
Remainder	19.834	20.869	1.035	5,2%	-3,8%	6,0%	0,0%
<b>Other liquid bulk</b>	<b>3.160.338</b>	<b>3.173.537</b>	<b>13.199</b>	<b>0,4%</b>	<b>0,4%</b>	<b>-0,3%</b>	<b>5,5%</b>
Biofuel	1.449.801	1.273.501	-176.300	-12,2%	-12,4%	-15,8%	2,2%
Chemical products	871.878	1.048.710	176.832	20,3%	24,6%	26,1%	1,8%
Oils and fats	735.104	782.148	47.044	6,4%	2,4%	5,5%	1,4%
Natural/artificial fertilizer	45.177	45.089	-88	-0,2%	-0,2%	-4,8%	0,1%
Other cargo by type	31.855	12.069	-19.785	-62,1%	-76,9%	-87,2%	0,0%
Remainder	26.524	12.020	-14.503	-54,7%	-54,7%	-54,7%	0,0%
<b>Dry bulk</b>	<b>4.079.670</b>	<b>4.438.279</b>	<b>358.608</b>	<b>8,8%</b>	<b>7,7%</b>	<b>11,8%</b>	<b>7,7%</b>
<b>Special installation</b>	<b>3.653.447</b>	<b>4.152.555</b>	<b>499.107</b>	<b>13,7%</b>	<b>11,9%</b>	<b>16,6%</b>	<b>7,2%</b>
Soya bean	1.228.635	1.351.944	123.309	10,0%	5,5%	6,0%	2,4%
Cement and clinker	751.490	916.684	165.194	22,0%	34,7%	43,1%	1,6%
Cereals and flours	571.722	895.979	324.257	56,7%	38,2%	56,6%	1,6%
Common salt	513.112	520.339	7.227	1,4%	6,7%	10,8%	0,9%
Potashes	547.811	447.430	-100.381	-18,3%	-19,9%	-20,2%	0,8%
Remainder	40.677	20.179	-20.499	-50,4%	-46,0%	-46,0%	0,0%
<b>Without special installation</b>	<b>426.223</b>	<b>285.724</b>	<b>-140.499</b>	<b>-33,0%</b>	<b>-30,4%</b>	<b>-32,8%</b>	<b>0,5%</b>
Scrap iron	221.824	183.516	-38.308	-17,3%	-21,2%	-19,5%	0,3%
Other non-metallic minerals	74.684	49.254	-25.429	-34,0%	-30,8%	-48,9%	0,1%
Chemical products	24.950	21.700	-3.250	-13,0%	-30,7%	-14,4%	0,0%
Other minerals and metallic waste	13.370	16.416	3.046	22,8%	22,8%	-18,4%	0,0%
Common salt	15.530	8.606	-6.924	-44,6%	-44,6%	-31,3%	0,0%
Remainder	75.866	6.232	-69.634	-91,8%	-99,9%	-99,9%	0,0%
<b>General cargo</b>	<b>45.324.384</b>	<b>41.137.633</b>	<b>-4.186.751</b>	<b>-9,2%</b>	<b>-11,1%</b>	<b>-12,0%</b>	<b>71,6%</b>
<b>Containerized</b>	<b>34.788.558</b>	<b>30.695.830</b>	<b>-4.092.728</b>	<b>-11,8%</b>	<b>-14,1%</b>	<b>-15,4%</b>	<b>53,4%</b>
Tare of containers	6.648.642	6.133.250	-515.392	-7,8%	-10,0%	-11,0%	10,7%
Chemical products	5.018.974	4.484.276	-534.698	-10,7%	-12,1%	-14,0%	7,8%
Other food products	3.378.240	3.487.492	109.251	3,2%	-3,3%	-2,7%	6,1%
Other cargo by type	4.078.605	3.315.193	-763.412	-18,7%	-21,0%	-22,9%	5,8%
Paper and pulp	2.102.470	2.303.245	200.775	9,5%	8,1%	5,0%	4,0%
Remainder	13.561.627	10.972.374	-2.589.253	-19,1%	-20,8%	-21,9%	19,1%
<b>Non-containerized</b>	<b>10.535.825</b>	<b>10.441.803</b>	<b>-94.023</b>	<b>-0,9%</b>	<b>-0,9%</b>	<b>-0,5%</b>	<b>18,2%</b>
Tare of platform and wagons (Ro-Ro)	4.130.677	4.011.316	-119.361	-2,9%	-3,0%	-3,4%	7,0%
Other cargo by type	1.745.132	1.684.051	-61.081	-3,5%	-3,7%	-3,4%	2,9%
Automobiles and parts	866.878	1.198.060	331.182	38,2%	43,5%	50,9%	2,1%
Machinery and spare parts	1.027.677	1.041.938	14.260	1,4%	2,1%	2,9%	1,8%
Frozen fish	555.293	506.973	-48.320	-8,7%	-8,7%	-8,4%	0,9%
Remainder	2.210.168	1.999.465	-210.703	-9,5%	-10,8%	-10,6%	3,5%

# TRAFFIC INDICATORS

Breakdown of traffic in transit (tonnes)	Monthly accumulated				% 23-22 accum. October	% 23-22 accum. September	% of total accum. 2023
	2022	2023	Diff. 23-22	%			
<b>Goods indicators by type of packaging (t)</b>	<b>23.554.400</b>	<b>18.703.692</b>	<b>-4.850.707</b>	<b>-20,6%</b>	<b>-22,7%</b>	<b>-25,0%</b>	<b>100%</b>
<b>Liquid bulk</b>	<b>5.552.065</b>	<b>3.839.884</b>	<b>-1.712.181</b>	<b>-30,8%</b>	<b>-31,4%</b>	<b>-35,6%</b>	<b>20,5%</b>
<b>Hydrocarbons</b>	<b>4.256.741</b>	<b>2.599.852</b>	<b>-1.656.889</b>	<b>-38,9%</b>	<b>-40,6%</b>	<b>-45,4%</b>	<b>13,9%</b>
Petrol	2.306.459	1.164.833	-1.141.625	-49,5%	-50,0%	-58,1%	6,2%
Fuel oil	1.021.048	746.025	-275.023	-26,9%	-27,6%	-25,5%	4,0%
Diesel oils	772.373	613.744	-158.629	-20,5%	-22,3%	-21,1%	3,3%
Other petroleum products	156.861	75.249	-81.611	-52,0%	-74,6%	-87,7%	0,4%
Remainder	0	0	0				0,0%
<b>Other liquid bulk</b>	<b>1.295.324</b>	<b>1.240.032</b>	<b>-55.292</b>	<b>-4,3%</b>	<b>-2,2%</b>	<b>-3,8%</b>	<b>6,6%</b>
Biofuel	1.077.636	750.968	-326.668	-30,3%	-30,6%	-33,5%	4,0%
Chemical products	159.643	469.977	310.333	194,4%	206,4%	204,9%	2,5%
Oils and fats	21.119	19.087	-2.033	-9,6%	5,2%	25,8%	0,1%
Other cargo by type	28.339	0	-28.339				0,0%
Wines, beverages, spirits and derivatives	8.587	0	-8.587				0,0%
Remainder	0	0	0				0,0%
<b>Dry bulk</b>	<b>6.300</b>	<b>34.822</b>	<b>28.522</b>	<b>452,7%</b>	<b>251,2%</b>	<b>251,2%</b>	<b>0,2%</b>
<b>Special installation</b>	<b>6.300</b>	<b>34.822</b>	<b>28.522</b>	<b>452,7%</b>	<b>251,2%</b>	<b>251,2%</b>	<b>0,2%</b>
Cereals and flours	6.300	25.397	19.097	303,1%	101,6%	101,6%	0,1%
Potashes	0	9.425	9.425				0,1%
Remainder	0	0	0				0,0%
<b>Without special installation</b>	<b>0</b>	<b>0</b>	<b>0</b>				<b>0,0%</b>
Remainder	0	0	0				0,0%
<b>General cargo</b>	<b>17.996.035</b>	<b>14.828.987</b>	<b>-3.167.048</b>	<b>-17,6%</b>	<b>-20,2%</b>	<b>-21,9%</b>	<b>79,3%</b>
<b>Containerized</b>	<b>17.547.034</b>	<b>14.431.644</b>	<b>-3.115.390</b>	<b>-17,8%</b>	<b>-20,4%</b>	<b>-22,2%</b>	<b>77,2%</b>
Tare of containers	2.971.210	2.473.029	-498.181	-16,8%	-19,3%	-20,9%	13,2%
Other food products	1.987.103	2.294.767	307.664	15,5%	5,3%	6,6%	12,3%
Chemical products	2.136.814	1.660.223	-476.591	-22,3%	-22,8%	-24,8%	8,9%
Other cargo by type	2.068.796	1.460.209	-608.587	-29,4%	-31,9%	-34,4%	7,8%
Paper and pulp	849.151	920.682	71.531	8,4%	7,9%	1,3%	4,9%
Remainder	7.533.959	5.622.734	-1.911.225	-25,4%	-27,0%	-28,4%	30,1%
<b>Non-containerized</b>	<b>449.001</b>	<b>397.343</b>	<b>-51.658</b>	<b>-11,5%</b>	<b>-10,1%</b>	<b>-9,3%</b>	<b>2,1%</b>
Automobiles and parts	125.744	164.124	38.380	30,5%	39,4%	49,7%	0,9%
Machinery and spare parts	66.208	61.280	-4.928	-7,4%	-0,7%	7,7%	0,3%
Tare of platform and wagons (Ro-Ro)	79.713	54.169	-25.544	-32,0%	-32,6%	-34,5%	0,3%
Other cargo by type	65.949	52.742	-13.207	-20,0%	-17,9%	-18,9%	0,3%
Wines, beverages, spirits and derivatives	3.769	25.150	21.381	567,3%	537,0%	442,4%	0,1%
Remainder	107.618	39.878	-67.740	-62,9%	-66,3%	-67,4%	0,2%

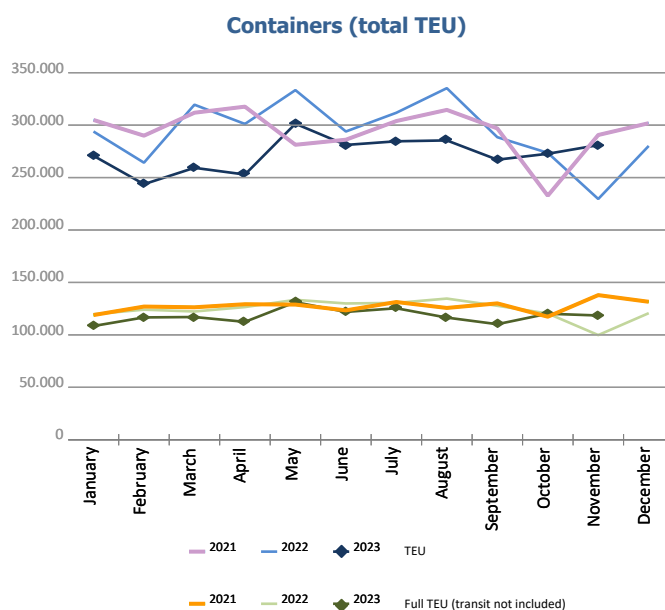
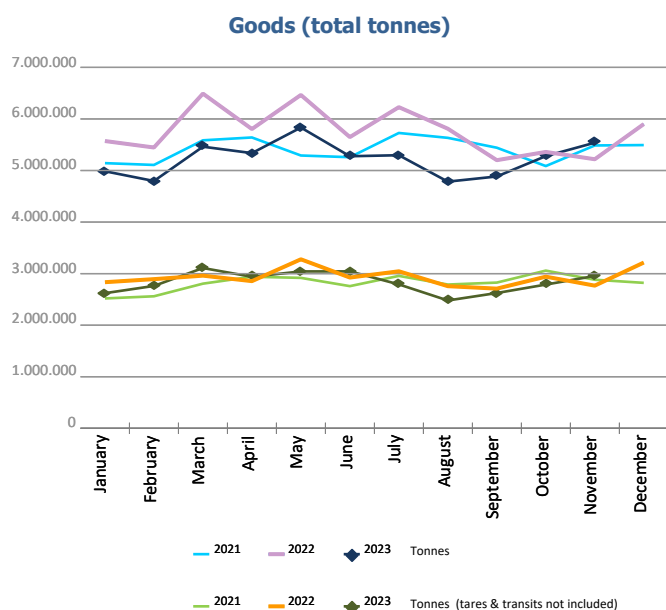
# TRAFFIC INDICATORS

## Monthly evolution of traffic. Tonnes

Monthly evolution of traffic	Total tonnes			%		Tonnes (tares & transits not included)			%	
	2022	2023	Diff. 23-22	Monthly	Accumulated	2022	2023	Diff. 23-22	Monthly	Accumulated
January	5.571.593	4.985.398	-586.195	-10,5%	-10,5%	2.833.810	2.620.828	-212.982	-7,5%	-7,5%
February	5.446.375	4.796.078	-650.297	-11,9%	-11,2%	2.893.004	2.761.257	-131.747	-4,6%	-6,0%
March	6.491.356	5.461.870	-1.029.485	-15,9%	-12,9%	2.960.820	3.108.533	147.712	5,0%	-2,3%
April	5.804.177	5.337.107	-467.070	-8,0%	-11,7%	2.854.316	2.939.442	85.126	3,0%	-1,0%
May	6.465.450	5.833.594	-631.856	-9,8%	-11,3%	3.278.034	3.042.677	-235.357	-7,2%	-2,3%
June	5.648.116	5.276.715	-371.401	-6,6%	-10,5%	2.923.660	3.043.364	119.705	4,1%	-1,3%
July	6.228.832	5.296.281	-932.552	-15,0%	-11,2%	3.045.360	2.791.036	-254.323	-8,4%	-2,3%
August	5.810.086	4.784.151	-1.025.935	-17,7%	-12,0%	2.756.439	2.479.299	-277.140	-10,1%	-3,2%
September	5.200.319	4.884.385	-315.934	-6,1%	-11,4%	2.708.810	2.623.823	-84.987	-3,1%	-3,2%
October	5.359.901	5.278.961	-80.940	-1,5%	-10,5%	2.940.906	2.787.761	-153.145	-5,2%	-3,4%
November	5.218.720	5.539.520	320.800	6,1%	-9,1%	2.766.970	2.954.981	188.011	6,8%	-2,5%
December	5.900.556					3.214.651				
<b>Total</b>	<b>69.145.479</b>	<b>57.474.059</b>				<b>35.176.780</b>	<b>31.153.002</b>			

## Monthly evolution of traffic. TEU

Monthly evolution of traffic	Total TEU			%		Full TEU (transit not included)			%	
	2022	2023	Diff. 23-22	Monthly	Accumulated	2022	2023	Diff. 23-22	Monthly	Accumulated
January	293.936	270.814	-23.122	-7,9%	-7,9%	119.697	108.430	-11.268	-9,4%	-9,4%
February	264.194	243.685	-20.509	-7,8%	-7,8%	124.031	116.640	-7.391	-6,0%	-7,7%
March	319.486	259.313	-60.173	-18,8%	-11,8%	122.283	117.007	-5.276	-4,3%	-6,5%
April	301.120	252.903	-48.217	-16,0%	-12,9%	126.513	112.395	-14.117	-11,2%	-7,7%
May	333.402	301.353	-32.049	-9,6%	-12,2%	133.419	131.139	-2.280	-1,7%	-6,4%
June	293.952	281.137	-12.815	-4,4%	-10,9%	129.933	121.905	-8.029	-6,2%	-6,4%
July	311.806	284.596	-27.210	-8,7%	-10,6%	130.457	125.356	-5.101	-3,9%	-6,0%
August	335.264	285.429	-49.835	-14,9%	-11,2%	134.615	116.475	-18.140	-13,5%	-7,0%
September	288.515	267.059	-21.455	-7,4%	-10,8%	127.747	110.160	-17.587	-13,8%	-7,8%
October	273.587	272.714	-874	-0,3%	-9,8%	120.390	120.158	-232	-0,2%	-7,0%
November	229.583	280.941	51.359	22,4%	-7,5%	99.791	118.480	18.689	18,7%	-5,2%
December	280.201					120.698				
<b>Total</b>	<b>3.525.043</b>	<b>2.999.944</b>				<b>1.489.572</b>	<b>1.298.143</b>			



# CONTAINER TRAFFIC

## TEU evolution

Full-unloaded foreign	Full TEU			%		Full-loaded foreign	Full TEU			%	
	2022	2023	Diff. 23-22	Monthly	Accumulated		2022	2023	Diff. 23-22	Monthly	Accumulated
January	48.476	49.138	662	1,4%	1,4%	January	64.009	51.046	-12.963	-20,3%	-20,3%
February	54.390	51.449	-2.941	-5,4%	-2,2%	February	61.530	56.052	-5.478	-8,9%	-14,7%
March	53.334	44.515	-8.819	-16,5%	-7,1%	March	61.139	60.777	-362	-0,6%	-10,1%
April	59.085	51.432	-7.653	-13,0%	-8,7%	April	58.086	51.390	-6.696	-11,5%	-10,4%
May	55.511	64.093	8.582	15,5%	-3,8%	May	70.010	56.514	-13.496	-19,3%	-12,4%
June	58.300	53.940	-4.361	-7,5%	-4,4%	June	63.144	57.195	-5.949	-9,4%	-11,9%
July	53.493	59.685	6.192	11,6%	-2,2%	July	67.435	54.831	-12.605	-18,7%	-12,9%
August	59.663	56.638	-3.025	-5,1%	-2,6%	August	66.589	50.134	-16.455	-24,7%	-14,5%
September	56.698	48.419	-8.279	-14,6%	-3,9%	September	61.784	50.739	-11.045	-17,9%	-14,8%
October	47.022	52.489	5.468	11,6%	-2,6%	October	64.583	57.844	-6.739	-10,4%	-14,4%
November	36.823	48.777	11.954	32,5%	-0,4%	November	54.099	59.626	5.527	10,2%	-12,5%
December	49.571					December	62.276				
<b>Total</b>	<b>632.363</b>	<b>580.572</b>				<b>Total</b>	<b>754.681</b>	<b>606.145</b>			

Full-unloaded domestic	Full TEU			%		Full-loaded domestic	Full TEU			%	
	2022	2023	Diff. 23-22	Monthly	Accumulated		2022	2023	Diff. 23-22	Monthly	Accumulated
January	1.733	1.702	-32	-1,8%	-1,8%	January	5.480	6.545	1.065	19,4%	19,4%
February	1.764	1.836	72	4,1%	1,2%	February	6.348	7.304	956	15,1%	17,1%
March	1.699	2.227	529	31,1%	10,9%	March	6.112	9.488	3.377	55,3%	30,1%
April	1.593	1.818	225	14,1%	11,7%	April	7.750	7.756	6	0,1%	21,0%
May	1.382	2.223	841	60,8%	20,0%	May	6.516	8.310	1.795	27,5%	22,4%
June	1.627	1.938	311	19,1%	19,9%	June	6.863	8.833	1.971	28,7%	23,5%
July	1.523	1.881	358	23,5%	20,3%	July	8.006	8.960	954	11,9%	21,5%
August	1.642	1.989	348	21,2%	20,4%	August	6.722	7.715	993	14,8%	20,7%
September	1.890	2.163	273	14,4%	19,7%	September	7.376	8.839	1.463	19,8%	20,6%
October	1.507	2.164	657	43,6%	21,9%	October	7.279	7.662	383	5,3%	18,9%
November	1.772	1.914	142	8,0%	20,5%	November	7.097	8.164	1.067	15,0%	18,6%
December	1.773					December	7.078				
<b>Total</b>	<b>19.903</b>	<b>21.853</b>				<b>Total</b>	<b>82.625</b>	<b>89.575</b>			

Full - Transit	Full TEU			%		Empty	Empty TEU			%	
	2022	2023	Diff. 23-22	Monthly	Accumulated		2022	2023	Diff. 23-22	Monthly	Accumulated
January	105.236	97.136	-8.100	-7,7%	-7,7%	January	69.003	65.249	-3.754	-5,4%	-5,4%
February	89.159	71.919	-17.240	-19,3%	-13,0%	February	51.004	55.126	4.123	8,1%	0,3%
March	136.336	83.590	-52.746	-38,7%	-23,6%	March	60.868	58.717	-2.151	-3,5%	-1,0%
April	129.299	83.957	-45.342	-35,1%	-26,8%	April	45.309	56.551	11.243	24,8%	4,2%
May	136.713	97.479	-39.234	-28,7%	-27,3%	May	63.271	72.735	9.465	15,0%	6,5%
June	108.465	84.535	-23.930	-22,1%	-26,5%	June	55.554	74.698	19.144	34,5%	11,0%
July	124.035	93.106	-30.929	-24,9%	-26,2%	July	57.315	66.135	8.820	15,4%	11,7%
August	131.163	83.798	-47.365	-36,1%	-27,6%	August	69.487	85.156	15.670	22,6%	13,3%
September	100.326	86.281	-14.045	-14,0%	-26,3%	September	60.442	70.619	10.177	16,8%	13,7%
October	93.355	90.688	-2.667	-2,9%	-24,4%	October	59.843	61.868	2.025	3,4%	12,6%
November	79.302	86.554	7.252	9,1%	-22,2%	November	50.490	75.907	25.418	50,3%	15,6%
December	86.856					December	72.648				
<b>Total</b>	<b>1.320.241</b>	<b>959.041</b>				<b>Total</b>	<b>715.230</b>	<b>742.760</b>			



# CONTAINER TRAFFIC

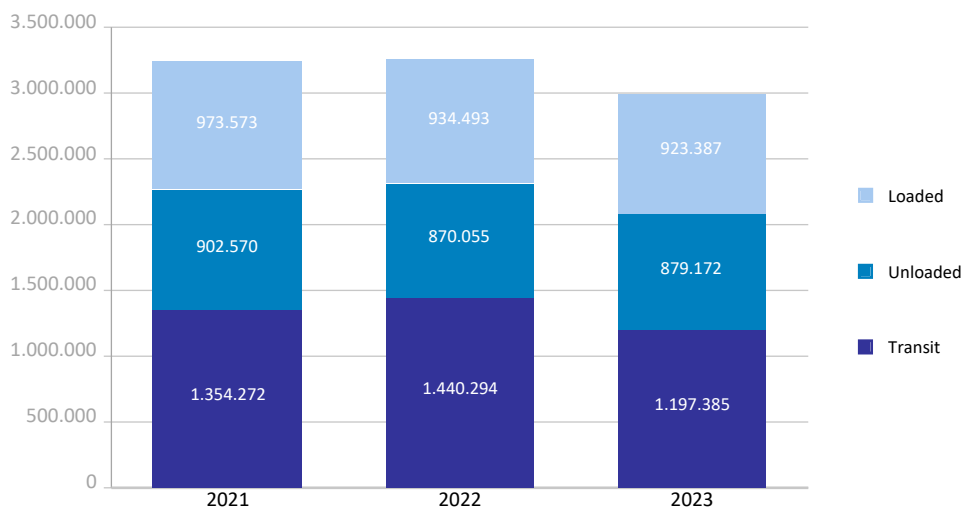
## TEU

Container traffic	Monthly accumulated 2022			Monthly accumulated 2023			%
	Domestic	Foreign	Total	Domestic	Foreign	Total	
<b>Total traffic</b>	<b>178.695</b>	<b>3.066.147</b>	<b>3.244.842</b>	<b>205.510</b>	<b>2.794.434</b>	<b>2.999.944</b>	<b>-7,5%</b>
<b>Unloaded</b>	<b>91.170</b>	<b>1.527.228</b>	<b>1.618.397</b>	<b>107.294</b>	<b>1.399.218</b>	<b>1.506.512</b>	<b>-6,9%</b>
Roll On-Roll Off	24.363	13.825	38.188	24.907	13.787	38.694	1,3%
Lift On-Lift Off	66.807	1.513.403	1.580.210	82.387	1.385.431	1.467.818	-7,1%
<b>Loaded</b>	<b>87.525</b>	<b>1.538.920</b>	<b>1.626.445</b>	<b>98.217</b>	<b>1.395.216</b>	<b>1.493.432</b>	<b>-8,2%</b>
Roll On-Roll Off	24.797	14.013	38.810	27.173	13.783	40.956	5,5%
Lift On-Lift Off	62.729	1.524.907	1.587.635	71.044	1.381.433	1.452.477	-8,5%

Breakdown by navigation and operation	Monthly accumulated 2022			Monthly accumulated 2023			%
	Domestic	Foreign	Total	Domestic	Foreign	Total	
<b>Loaded</b>	<b>87.368</b>	<b>847.125</b>	<b>934.493</b>	<b>98.006</b>	<b>825.381</b>	<b>923.387</b>	<b>-1,2%</b>
Full	75.547	692.405	767.952	89.575	606.145	695.719	-9,4%
Empty	11.821	154.721	166.542	8.431	219.237	227.668	36,7%
<b>Unloaded</b>	<b>89.436</b>	<b>780.619</b>	<b>870.055</b>	<b>103.919</b>	<b>775.254</b>	<b>879.172</b>	<b>1,0%</b>
Full	18.130	582.792	600.922	21.853	580.572	602.424	0,2%
Empty	71.306	197.827	269.133	82.066	194.682	276.748	2,8%
<b>Transit</b>	<b>1.891</b>	<b>1.438.403</b>	<b>1.440.294</b>	<b>3.586</b>	<b>1.193.799</b>	<b>1.197.385</b>	<b>-16,9%</b>
Full	84	1.233.301	1.233.385	40	959.001	959.041	-22,2%
Empty	1.807	205.102	206.909	3.546	234.799	238.345	15,2%

<b>Total traffic</b>	<b>178.695</b>	<b>3.066.147</b>	<b>3.244.842</b>	<b>205.510</b>	<b>2.794.434</b>	<b>2.999.944</b>	<b>-7,5%</b>
Full	93.761	2.508.498	2.602.259	111.467	2.145.717	2.257.184	-13,3%
Empty	84.934	557.649	642.583	94.043	648.717	742.760	15,6%
% Empty	47,5%	18,2%	<b>19,8%</b>	45,8%	23,2%	<b>24,8%</b>	
% Transit	1,1%	46,9%	<b>44,4%</b>	1,7%	42,7%	<b>39,9%</b>	

General cargo distribution by operation (TEU )

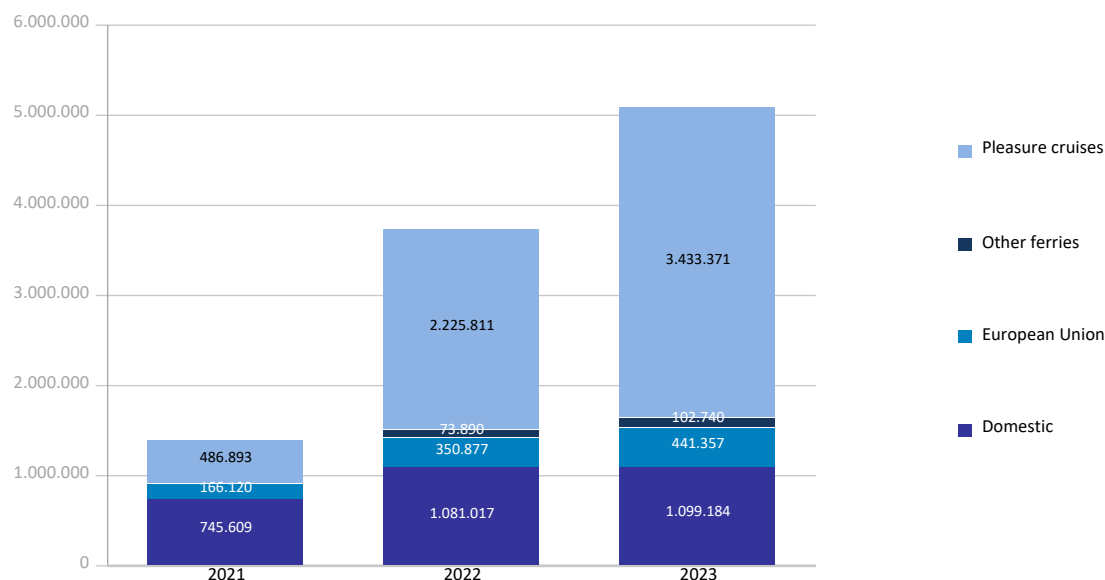


## PASSENGER TRAFFIC

Total passenger traffic (units)	Monthly accumulated				% 23-22 accum. October	% 23-22 accum. September
	2022	2023	Diff. 23-22	%		
<b>Total passengers</b>	<b>3.731.595</b>	<b>5.076.652</b>	<b>1.345.057</b>	<b>36,0%</b>	<b>35,3%</b>	<b>37,1%</b>
Embarkation	1.408.124	1.769.758	361.634	25,7%	23,7%	24,3%
Disembarkation	1.361.385	1.725.710	364.325	26,8%	25,6%	26,7%
Transit	962.086	1.581.184	619.098	64,3%	67,9%	76,1%
<b>Regular line ferries</b>	<b>1.505.784</b>	<b>1.643.281</b>	<b>137.497</b>	<b>9,1%</b>	<b>9,2%</b>	<b>9,0%</b>
Embarkation	772.968	836.864	63.896	8,3%	8,2%	7,9%
Disembarkation	732.816	806.417	73.601	10,0%	10,3%	10,3%
<b>Domestic</b>	<b>1.081.017</b>	<b>1.099.184</b>	<b>18.167</b>	<b>1,7%</b>	<b>1,3%</b>	<b>0,3%</b>
Embarkation	558.402	566.667	8.265	1,5%	1,2%	0,2%
Disembarkation	522.615	532.517	9.902	1,9%	1,4%	0,4%
<b>European Union</b>	<b>350.877</b>	<b>441.357</b>	<b>90.480</b>	<b>25,8%</b>	<b>26,4%</b>	<b>28,2%</b>
Embarkation	175.269	218.645	43.376	24,7%	24,9%	26,1%
Disembarkation	175.608	222.712	47.104	26,8%	27,9%	30,4%
<b>Other ferries</b>	<b>73.890</b>	<b>102.740</b>	<b>28.850</b>	<b>39,0%</b>	<b>45,2%</b>	<b>49,0%</b>
Embarkation	39.297	51.552	12.255	31,2%	35,6%	38,6%
Disembarkation	34.593	51.188	16.595	48,0%	56,5%	61,3%
<b>Pleasure cruises</b>	<b>2.225.811</b>	<b>3.433.371</b>	<b>1.207.560</b>	<b>54,3%</b>	<b>53,6%</b>	<b>59,7%</b>
Embarkation	635.156	932.894	297.738	46,9%	43,0%	47,5%
Disembarkation	628.569	919.293	290.724	46,3%	43,6%	48,7%
Transit	962.086	1.581.184	619.098	64,3%	67,9%	76,1%

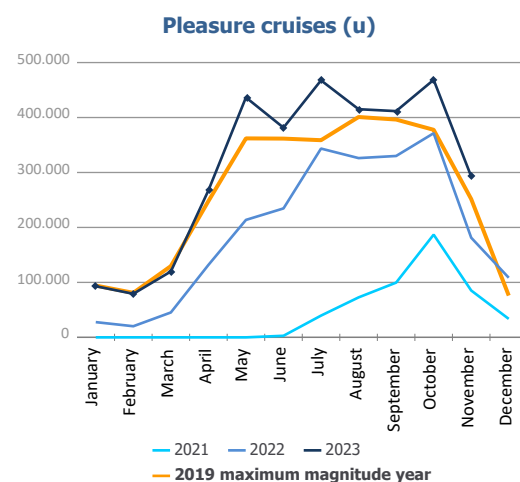
Total passenger calls (units)	Monthly accumulated				% 23-22 accum. October	% 23-22 accum. September
	2022	2023	Diff. 23-22	%		
<b>Total number of calls</b>	<b>3.751</b>	<b>3.798</b>	<b>47</b>	<b>1,3%</b>	<b>1,7%</b>	<b>1,6%</b>
<b>Regular Line ferries</b>	<b>2.978</b>	<b>3.027</b>	<b>49</b>	<b>1,6%</b>	<b>2,3%</b>	<b>1,7%</b>
<b>Pleasure cruises</b>	<b>773</b>	<b>771</b>	<b>-2</b>	<b>-0,3%</b>	<b>-0,9%</b>	<b>1,2%</b>

Passenger traffic distribution (u)

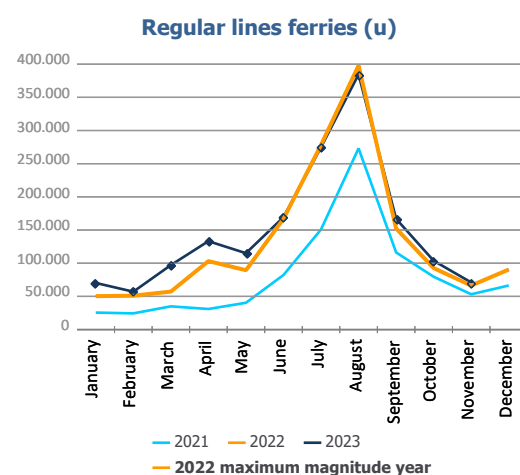


## PASSENGER CLASSIFICATION

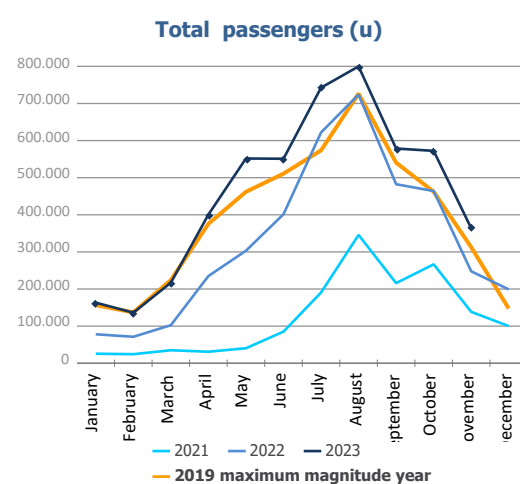
Monthly evolution of passenger traffic	Pleasure cruises			%	
	2022	2023	Diff. 23-22	Monthly	Accumulated
January	27.707	93.013	65.306	235,7%	235,7%
February	20.234	79.194	58.960	291,4%	259,2%
March	45.304	119.885	74.581	164,6%	213,3%
April	131.770	267.420	135.650	102,9%	148,7%
May	213.711	436.569	222.858	104,3%	127,0%
June	234.617	381.587	146.970	62,6%	104,6%
July	343.517	467.607	124.090	36,1%	81,5%
August	326.187	415.154	88.967	27,3%	68,3%
September	330.034	411.670	81.636	24,7%	59,7%
October	371.412	468.553	97.141	26,2%	53,6%
November	181.318	292.719	111.401	61,4%	54,3%
December	108.494				
<b>Total</b>	<b>2.334.305</b>	<b>3.433.371</b>			



Monthly evolution of passenger traffic	Regular lines ferries			%	
	2022	2023	Diff. 23-22	Monthly	Accumulated
January	50.352	70.262	19.910	39,5%	39,5%
February	51.078	57.059	5.981	11,7%	25,5%
March	57.261	97.166	39.905	69,7%	41,5%
April	103.159	133.201	30.042	29,1%	36,6%
May	89.473	115.112	25.639	28,7%	34,6%
June	166.930	169.419	2.489	1,5%	23,9%
July	278.213	274.776	-3.437	-1,2%	15,1%
August	397.960	384.652	-13.308	-3,3%	9,0%
September	152.317	166.887	14.570	9,6%	9,0%
October	92.657	103.714	11.057	11,9%	9,2%
November	66.384	71.033	4.649	7,0%	9,1%
December	90.483				
<b>Total</b>	<b>1.596.267</b>	<b>1.643.281</b>			



Monthly evolution of passenger traffic	Total passengers			%	
	2022	2023	Diff. 23-22	Monthly	Accumulated
January	78.059	163.275	85.216	109,2%	109,2%
February	71.312	136.253	64.941	91,1%	100,5%
March	102.565	217.051	114.486	111,6%	105,0%
April	234.929	400.621	165.692	70,5%	88,4%
May	303.184	551.681	248.497	82,0%	85,9%
June	401.547	551.006	149.459	37,2%	69,5%
July	621.730	742.383	120.653	19,4%	52,3%
August	724.147	799.806	75.659	10,4%	40,4%
September	482.351	578.557	96.206	19,9%	37,1%
October	464.069	572.267	108.198	23,3%	35,3%
November	247.702	363.752	116.050	46,9%	36,0%
December	198.977				
<b>Total</b>	<b>3.930.572</b>	<b>5.076.652</b>			

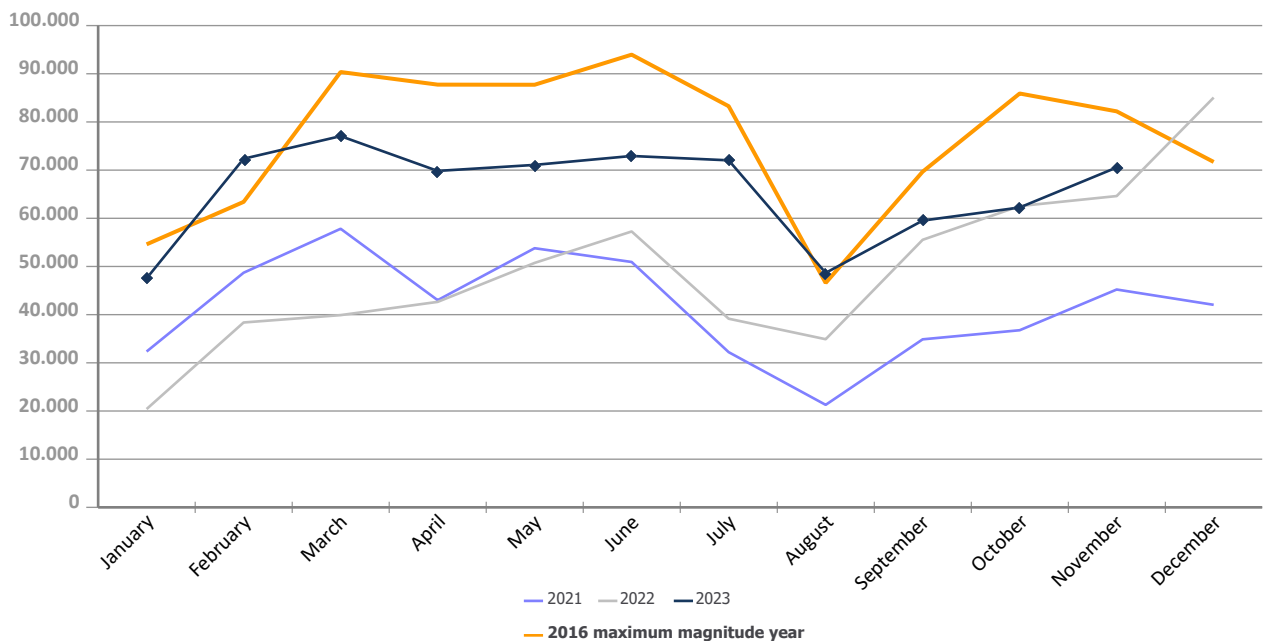


# AUTOMOBILE TRAFFIC

Total automobile traffic (units)	Monthly accumulated				% 23-22 accum. October	% 23-22 accum. September
	2022	2023	Diff. 23-22	%		
<b>Automobile traffic by navigation and operation</b>	<b>506.093</b>	<b>723.838</b>	<b>217.745</b>	<b>43,0%</b>	<b>48,0%</b>	<b>56,0%</b>
<b>Domestic</b>	<b>80.965</b>	<b>100.861</b>	<b>19.896</b>	<b>24,6%</b>	<b>26,9%</b>	<b>29,4%</b>
Loaded	64.506	82.631	18.125	28,1%	28,9%	30,1%
Unloaded	16.457	18.124	1.667	10,1%	16,2%	22,9%
Transit	2	106	104	5200,0%	5200,0%	5200,0%
<b>Foreign</b>	<b>425.128</b>	<b>622.977</b>	<b>197.849</b>	<b>46,5%</b>	<b>52,0%</b>	<b>61,3%</b>
Loaded	220.315	297.597	77.282	35,1%	37,2%	39,0%
Unloaded	130.894	224.273	93.379	71,3%	80,3%	102,5%
Transit	73.919	101.107	27.188	36,8%	47,8%	64,1%

Monthly automobile traffic (u)	Monthly		Accumulated		%	
	2022	2023	2022	2023	Monthly	Accumulated
January	20.402	47.534	20.402	47.534	133,0%	133,0%
February	38.375	72.364	58.777	119.898	88,6%	104,0%
March	39.904	77.057	98.681	196.955	93,1%	99,6%
April	42.653	69.834	141.334	266.789	63,7%	88,8%
May	50.736	71.083	192.070	337.872	40,1%	75,9%
June	57.266	72.935	249.336	410.807	27,4%	64,8%
July	39.159	72.037	288.495	482.844	84,0%	67,4%
August	34.906	48.671	323.401	531.515	39,4%	64,4%
September	55.534	59.527	378.935	591.042	7,2%	56,0%
October	62.543	62.243	441.478	653.285	-0,5%	48,0%
November	64.615	70.553	506.093	723.838	9,2%	43,0%
December	85.065		591.158			

Evolution of monthly automobile traffic (u)

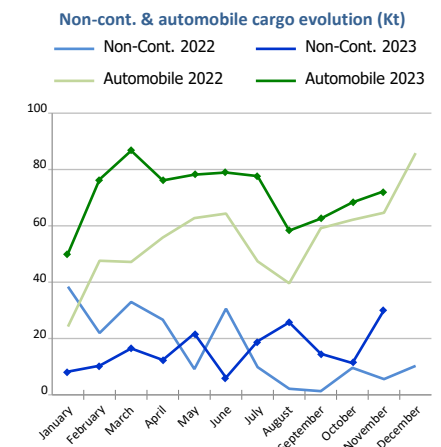
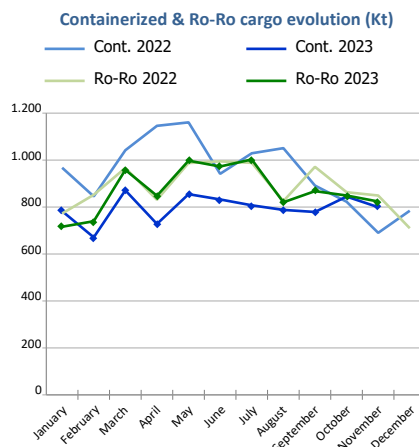
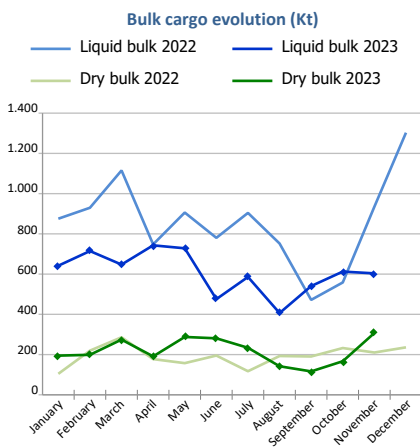
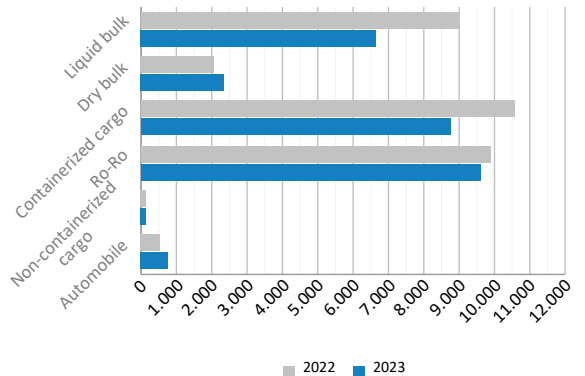


# SHORT SEA SHIPPING (SSS)

## SSS Goods classification

Goods classification. Tonnes	Monthly accumulated		%	% of total port traffic
	2022	2023		
Liquid bulk	8.975.670	6.699.350	-25,4%	56,3%
Dry bulk	2.083.220	2.393.554	14,9%	53,9%
Containerized cargo	10.588.356	8.759.146	-17,3%	29,2%
Ro-Ro	9.902.658	9.596.772	-3,1%	99,5%
Non-containerized cargo	188.177	175.980	-6,5%	51,6%
Automobile	574.966	785.703	36,7%	71,0%
<b>Total</b>	<b>32.313.047</b>	<b>28.410.506</b>	<b>-12,1%</b>	<b>49,4%</b>

SSS goods classification (Kt)



SSS General Cargo	Spanish Islands			SSS Remainder			TOTAL		
	2022	2023	%	2022	2023	%	2022	2023	%
<b>Containerized cargo</b>	690.229	833.632	20,8%	9.898.128	7.925.514	-19,9%	<b>10.588.356</b>	<b>8.759.146</b>	<b>-17,3%</b>
O/D	672.372	812.121	20,8%	2.934.890	2.998.257	2,2%	<b>3.607.262</b>	<b>3.810.378</b>	<b>5,6%</b>
Transit	17.856	21.511	20,5%	6.963.238	4.927.257	-29,2%	<b>6.981.094</b>	<b>4.948.768</b>	<b>-29,1%</b>
<b>Ro-Ro</b>	5.387.791	5.444.266	1,0%	4.514.867	4.152.507	-8,0%	<b>9.902.658</b>	<b>9.596.772</b>	<b>-3,1%</b>
O/D	5.387.772	5.444.266	1,0%	4.183.688	3.922.295	-6,2%	<b>9.571.460</b>	<b>9.366.561</b>	<b>-2,1%</b>
Transit	18	0		331.179	230.212	-30,5%	<b>331.198</b>	<b>230.212</b>	<b>-30,5%</b>
<b>Non-cont. cargo</b>	5.492	2.739	-50,1%	182.685	173.242	-5,2%	<b>188.177</b>	<b>175.980</b>	<b>-6,5%</b>
O/D	5.474	2.738	-50,0%	176.516	168.780	-4,4%	<b>181.990</b>	<b>171.519</b>	<b>-5,8%</b>
Transit	18	0	-99,8%	6.169	4.461	-27,7%	<b>6.187</b>	<b>4.461</b>	<b>-27,9%</b>
<b>Automobile</b>	117.552	157.293	33,8%	457.414	628.410	37,4%	<b>574.966</b>	<b>785.703</b>	<b>36,7%</b>
O/D	117.026	156.906	34,1%	381.386	515.961	35,3%	<b>498.412</b>	<b>672.867</b>	<b>35,0%</b>
Transit	526	387	-26,4%	76.028	112.449	47,9%	<b>76.554</b>	<b>112.837</b>	<b>47,4%</b>



### Short Sea Shipping (SSS):

The transport of cargo/goods and passengers between ports situated in the European Union or between these ports and non-European ports with a coastline in seas bordering Europe. This applies to cargo either originating from or is destined for these countries (in accordance with the European Shortsea Network).

### Motorways of the sea (MoS):

Short Sea Shipping services as an alternative to road transport and which fulfill the following criteria: minimum frequency of 3 calls per week and calling at a maximum of 3 different ports.

### General cargo:

Including containerized cargo, non-containerized cargo, Ro-Ro and automobiles.

### Containerized cargo:

Excluding container cargo by Ro-Ro.

### Non-containerized cargo:

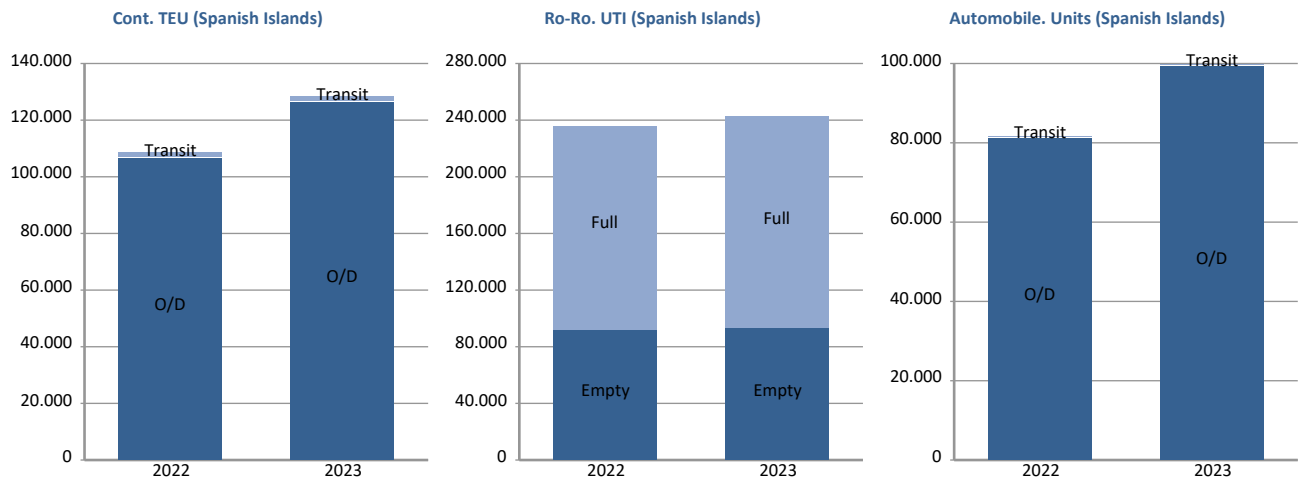
General non-containerized goods other than Ro-Ro and excluding automobiles.

### Ro-Ro:

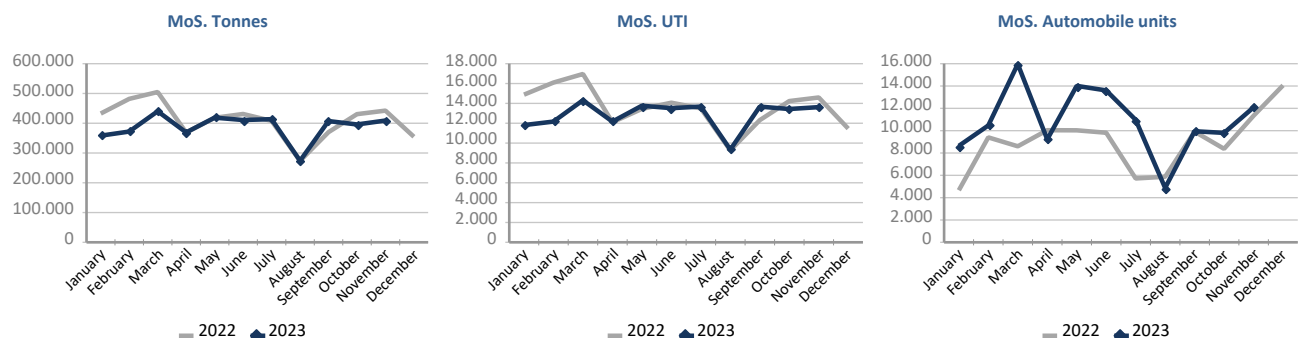
General cargo carried in UTI's. Excluding automobiles.

# SHORT SEA SHIPPING (SSS)

SSS General cargo	Spanish Islands			SSS Remainder			TOTAL		
	2022	2023	%	2022	2023	%	2022	2023	%
<b>Containerized cargo. TEU</b>	108.975	128.375	17,8%	897.387	761.228	-15,2%	<b>1.006.362</b>	<b>889.603</b>	<b>-11,6%</b>
<b>O/D</b>	106.369	126.177	18,6%	337.629	364.184	7,9%	<b>443.998</b>	<b>490.361</b>	<b>10,4%</b>
Full	64.733	78.401	21,1%	203.453	213.629	5,0%	<b>268.185</b>	<b>292.030</b>	<b>8,9%</b>
Empty	41.637	47.777	14,7%	134.177	150.555	12,2%	<b>175.813</b>	<b>198.332</b>	<b>12,8%</b>
<b>Transit</b>	2.606	2.198	-15,6%	559.758	397.044	-29,1%	<b>562.364</b>	<b>399.242</b>	<b>-29,0%</b>
Full	1.299	1.810	39,3%	511.998	356.398	-30,4%	<b>513.297</b>	<b>358.208</b>	<b>-30,2%</b>
Empty	1.307	388	-70,3%	47.761	40.647	-14,9%	<b>49.067</b>	<b>41.035</b>	<b>-16,4%</b>
<b>Ro-Ro. UTI</b>	236.379	243.295	2,9%	153.923	143.392	-6,8%	<b>390.302</b>	<b>386.687</b>	<b>-0,9%</b>
Full	145.220	150.920	3,9%	142.196	130.921	-7,9%	<b>287.416</b>	<b>281.841</b>	<b>-1,9%</b>
Empty	91.159	92.375	1,3%	11.727	12.471	6,3%	<b>102.886</b>	<b>104.846</b>	<b>1,9%</b>
<b>Automobile units</b>	81.362	99.751	22,6%	315.556	433.523	37,4%	<b>396.918</b>	<b>533.274</b>	<b>34,4%</b>
<b>O/D</b>	80.966	99.466	22,8%	262.851	359.792	36,9%	<b>343.817</b>	<b>459.258</b>	<b>33,6%</b>
<b>Transit</b>	396	285	-28,0%	52.705	73.731	39,9%	<b>53.101</b>	<b>74.016</b>	<b>39,4%</b>



Motorways of the Sea (MoS)	EU			Non-EU			TOTAL		
	2022	2023	%	2022	2023	%	2022	2023	%
<b>Tonnes</b>	4.508.109	4.252.459	-5,7%	53.547	16.467	-69,2%	<b>4.561.656</b>	<b>4.268.927</b>	<b>-6,4%</b>
Loaded	2.398.465	2.271.361	-5,3%	23.985	11.270	-53,0%	<b>2.422.450</b>	<b>2.282.631</b>	<b>-5,8%</b>
Unloaded	2.109.644	1.981.098	-6,1%	29.563	5.197	-82,4%	<b>2.139.206</b>	<b>1.986.296</b>	<b>-7,1%</b>
<b>UTI</b>	148.451	140.699	-5,2%	3.011	803	-73,3%	<b>151.462</b>	<b>141.502</b>	<b>-6,6%</b>
Loaded	76.433	72.538	-5,1%	1.526	559	-63,4%	<b>77.959</b>	<b>73.097</b>	<b>-6,2%</b>
Unloaded	72.018	68.161	-5,4%	1.485	244	-83,6%	<b>73.503</b>	<b>68.405</b>	<b>-6,9%</b>
<b>Automobile units</b>	93.058	118.149	27,0%	717	1.450	102,2%	<b>93.775</b>	<b>119.599</b>	<b>27,5%</b>
Loaded	89.433	110.940	24,0%	161	1.445	797,5%	<b>89.594</b>	<b>112.385</b>	<b>25,4%</b>
Unloaded	3.625	7.209	98,9%	556	5	-99,1%	<b>4.181</b>	<b>7.214</b>	<b>72,5%</b>

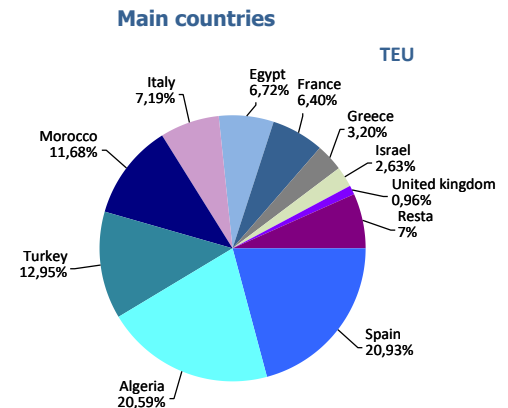


**UTI**: All those means of unitization, self-propelled or otherwise, that are directly or indirectly used as a means of land transport (e.g. trailers, platforms, trucks, freezer trucks, etc.) are considered as UTI. Containers are not considered to be included, except those that are handled by an equipment transport of the own terminal.

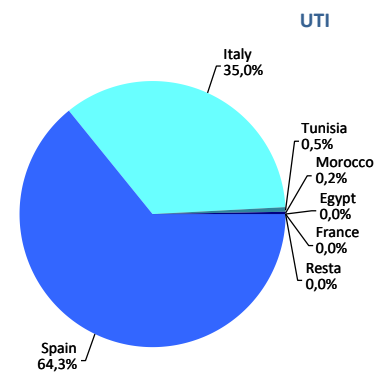
# SHORT SEA SHIPPING (SSS)

## SSS Ranking countries by mode of packaging

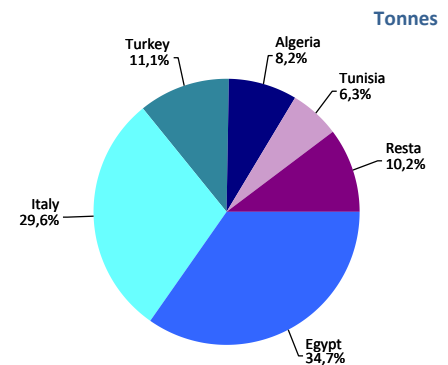
Containerized cargo. TEU	Monthly accumulated				% of total 2023
	2022	2023	Diff. 23-22	%	
<b>Total</b>	<b>1.006.362</b>	<b>889.603</b>	<b>-116.759</b>	<b>-11,6%</b>	<b>100%</b>
Spain	158.224	186.202	27.978	17,7%	20,9%
Algeria	179.982	183.134	3.153	1,8%	20,6%
Turkey	146.724	115.244	-31.480	-21,5%	13,0%
Morocco	83.744	103.866	20.122	24,0%	11,7%
Italy	153.399	63.928	-89.471	-58,3%	7,2%
Egypt	49.122	59.804	10.681	21,7%	6,7%
France	91.254	56.916	-34.338	-37,6%	6,4%
Greece	31.517	28.509	-3.008	-9,5%	3,2%
Israel	19.093	23.406	4.313	22,6%	2,6%
United kingdom	13.732	8.539	-5.194	-37,8%	1,0%
Remainder	79.573	60.057	-19.516	-24,5%	6,8%



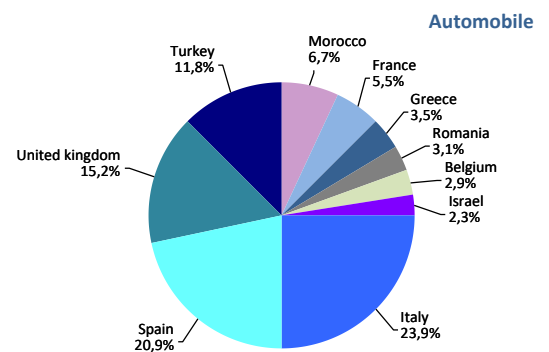
Ro-Ro. UTI	Monthly accumulated				% of total 2023
	2022	2023	Diff. 23-22	%	
<b>Total</b>	<b>390.302</b>	<b>386.687</b>	<b>-3.616</b>	<b>-0,9%</b>	<b>100%</b>
Spain	243.369	248.507	5.138	2,1%	64,3%
Italy	141.452	135.453	-5.999	-4,2%	35,0%
Tunisia	2.244	1.811	-434	-19,3%	0,5%
Morocco	3.217	889	-2.328	-72,4%	0,2%
Egypt	13	13	0	0,0%	0,0%
Remainder	3	13	10	333,3%	0,0%
	4	1	-3	-75,0%	0,0%



Non-cont. cargo. Tonnes	Monthly accumulated				% of total 2023
	2022	2023	Diff. 23-22	%	
<b>Total</b>	<b>188.177</b>	<b>175.980</b>	<b>-12.197</b>	<b>-6,5%</b>	<b>100%</b>
Egypt	25.223	60.993	35.770	141,8%	34,7%
Italy	43.572	52.159	8.588	19,7%	29,6%
Turkey	61.321	19.498	-41.822	-68,2%	11,1%
Algeria	5.137	14.394	9.257	180,2%	8,2%
Tunisia	19.323	11.063	-8.260	-42,7%	6,3%
Remainder	33.602	17.873	-15.729	-46,8%	10,2%



Automobile. Units	Monthly accumulated				% of total 2023
	2022	2023	Diff. 23-22	%	
<b>Total</b>	<b>396.918</b>	<b>533.274</b>	<b>136.356</b>	<b>34,4%</b>	<b>100%</b>
Italy	97.426	127.268	29.842	30,6%	23,9%
Spain	90.573	111.693	21.120	23,3%	20,9%
United kingdom	59.502	81.075	21.573	36,3%	15,2%
Turkey	34.722	62.750	28.028	80,7%	11,8%
Morocco	29.704	35.622	5.918	19,9%	6,7%
France	19.189	29.448	10.259	53,5%	5,5%
Greece	10.167	18.738	8.571	84,3%	3,5%
Romania	16.112	16.708	596	3,7%	3,1%
Belgium	5.450	15.616	10.166	186,5%	2,9%
Israel	9.549	12.230	2.681	28,1%	2,3%
Remainder	24.524	22.126	-2.398	-9,8%	4,1%



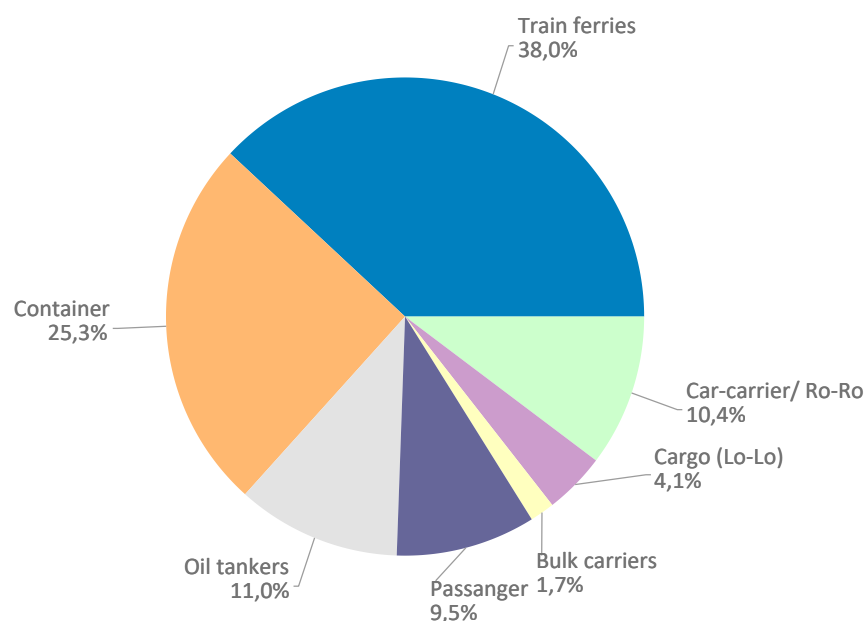
## VESSELS TRAFFIC

Vessels traffic	Monthly accumulated		
	2022	2023	%
Number of calls	8.004	8.113	1,4%
Tonnage	323.703.362	348.558.463	7,7%
Average tonnes	40.443	42.963	6,2%

Type of vessels	Monthly accumulated					
	2022		2023		%	
	Calls	GT	Calls	GT	Calls	GT
<b>Total</b>	<b>8.004</b>	<b>323.703.362</b>	<b>8.113</b>	<b>348.558.463</b>	<b>1,4%</b>	<b>7,7%</b>
Car-carrier/ Ro-Ro	853	42.998.944	840	44.572.455	-1,5%	3,7%
Cargo (Lo-Lo)	276	1.624.131	332	2.053.924	20,3%	26,5%
Refrigerators	1	14.868	0	0		
Bulk carriers	138	3.529.227	138	3.943.250	0,0%	11,7%
Passanger	774	87.029.571	772	95.133.333	-0,3%	9,3%
Oil tankers	1.096	20.798.860	895	17.685.465	-18,3%	-15,0%
Container	1.913	80.276.660	2.054	93.707.646	7,4%	16,7%
Train ferries	2.953	87.431.101	3.082	91.462.390	4,4%	4,6%

Type of vessels (monthly accumulated 2023)	Domestic		Foreign	
	Calls	GT	Calls	GT
<b>Total</b>	<b>2.896</b>	<b>71.270.228</b>	<b>5.217</b>	<b>277.288.235</b>
Car-carrier/ Ro-Ro	53	1.130.129	787	43.442.326
Cargo (Lo-Lo)	27	87.706	305	1.966.218
Refrigerators			0	0
Bulk carriers	8	149.304	130	3.793.946
Passanger	114	7.878.720	658	87.254.613
Oil tankers	59	661.659	836	17.023.806
Container	276	2.513.478	1.778	91.194.168
Train ferries	2.359	58.849.232	723	32.613.158

Distribution by type of vessel

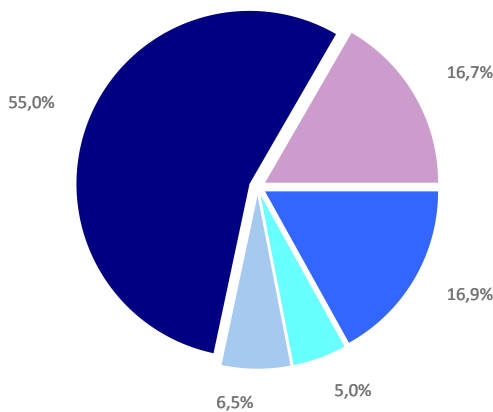




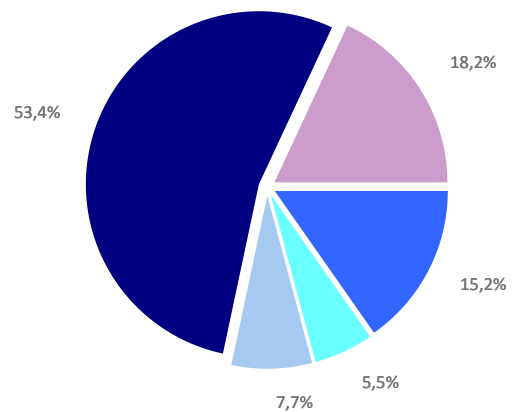
# GOODS TRAFFIC

Type of packaging and navigation	Monthly accumulated 2022			Monthly accumulated 2023			%
	Domestic	Foreign	Total	Domestic	Foreign	Total	
<b>Hydrocarbons</b>	<b>1.008.480</b>	<b>9.672.052</b>	<b>10.680.532</b>	<b>703.468</b>	<b>8.021.141</b>	<b>8.724.609</b>	<b>-18,3%</b>
Incoming	939.297	7.672.306	<b>8.611.602</b>	538.033	6.700.104	<b>7.238.137</b>	-15,9%
Outgoing	69.184	1.999.746	<b>2.068.930</b>	165.435	1.321.037	<b>1.486.472</b>	-28,2%
<b>Other liquid bulk</b>	<b>235.278</b>	<b>2.925.060</b>	<b>3.160.338</b>	<b>145.618</b>	<b>3.027.919</b>	<b>3.173.537</b>	<b>0,4%</b>
Incoming	142.232	2.032.548	<b>2.174.779</b>	85.381	2.017.527	<b>2.102.908</b>	-3,3%
Outgoing	93.046	892.513	<b>985.559</b>	60.237	1.010.392	<b>1.070.629</b>	8,6%
<b>Dry bulk</b>	<b>175.570</b>	<b>3.904.100</b>	<b>4.079.670</b>	<b>132.137</b>	<b>4.306.142</b>	<b>4.438.279</b>	<b>8,8%</b>
Incoming	90.877	2.028.548	<b>2.119.425</b>	106.989	2.387.835	<b>2.494.824</b>	17,7%
Outgoing	84.693	1.875.552	<b>1.960.245</b>	25.148	1.918.307	<b>1.943.455</b>	-0,9%
<b>Containerized cargo</b>	<b>1.104.869</b>	<b>33.683.689</b>	<b>34.788.558</b>	<b>1.296.072</b>	<b>29.399.758</b>	<b>30.695.830</b>	<b>-11,8%</b>
Incoming	325.922	15.566.536	<b>15.892.458</b>	384.842	14.087.745	<b>14.472.587</b>	-8,9%
Outgoing	778.947	18.117.153	<b>18.896.100</b>	911.231	15.312.012	<b>16.223.243</b>	-14,1%
<b>Non-containerized cargo</b>	<b>5.150.601</b>	<b>5.385.224</b>	<b>10.535.825</b>	<b>5.223.424</b>	<b>5.218.379</b>	<b>10.441.803</b>	<b>-0,9%</b>
Incoming	1.761.439	2.762.032	<b>4.523.472</b>	1.718.718	2.638.447	<b>4.357.165</b>	-3,7%
Outgoing	3.389.162	2.623.192	<b>6.012.354</b>	3.504.706	2.579.931	<b>6.084.638</b>	1,2%
<b>Total general cargo</b>	<b>6.255.471</b>	<b>39.068.913</b>	<b>45.324.384</b>	<b>6.519.497</b>	<b>34.618.137</b>	<b>41.137.633</b>	<b>-9,2%</b>
Incoming	2.087.362	18.328.569	<b>20.415.930</b>	2.103.560	16.726.193	<b>18.829.752</b>	-7,8%
Outgoing	4.168.109	20.740.345	<b>24.908.454</b>	4.415.937	17.891.944	<b>22.307.881</b>	-10,4%
<b>Total throughput (tonnes)</b>	<b>7.674.799</b>	<b>55.570.125</b>	<b>63.244.924</b>	<b>7.500.720</b>	<b>49.973.339</b>	<b>57.474.059</b>	<b>-9,1%</b>
Incoming	3.259.767	30.061.970	<b>33.321.737</b>	2.833.963	27.831.658	<b>30.665.621</b>	-8,0%
Outgoing	4.415.032	25.508.155	<b>29.923.187</b>	4.666.757	22.141.681	<b>26.808.438</b>	-10,4%
<b>Container traffic (TEU)</b>	<b>178.695</b>	<b>3.066.147</b>	<b>3.244.842</b>	<b>205.510</b>	<b>2.794.434</b>	<b>2.999.944</b>	<b>-7,5%</b>
Incoming	91.170	1.527.228	<b>1.618.397</b>	107.294	1.399.218	<b>1.506.512</b>	-6,9%
Outgoing	87.525	1.538.920	<b>1.626.445</b>	98.217	1.395.216	<b>1.493.432</b>	-8,2%

Distribution by type of packaging 2022

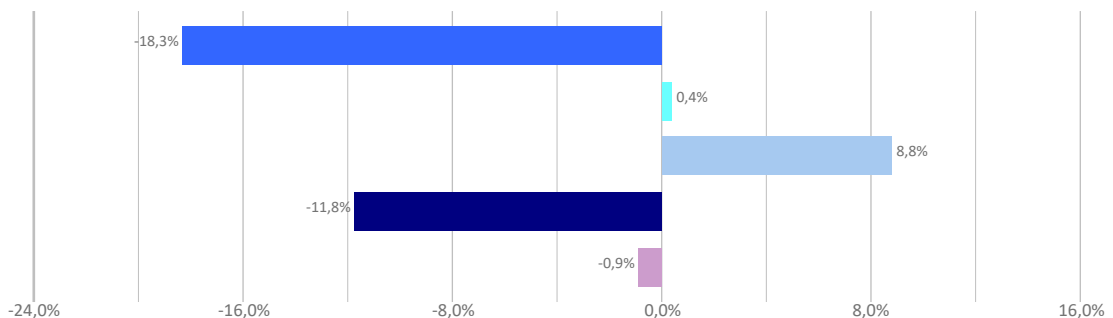


Distribution by type of packaging 2023



■ Hydrocarbons ■ Liquid bulk ■ Dry bulk ■ Containerized cargo ■ Non Containerized cargo

Annual growth by type of packaging



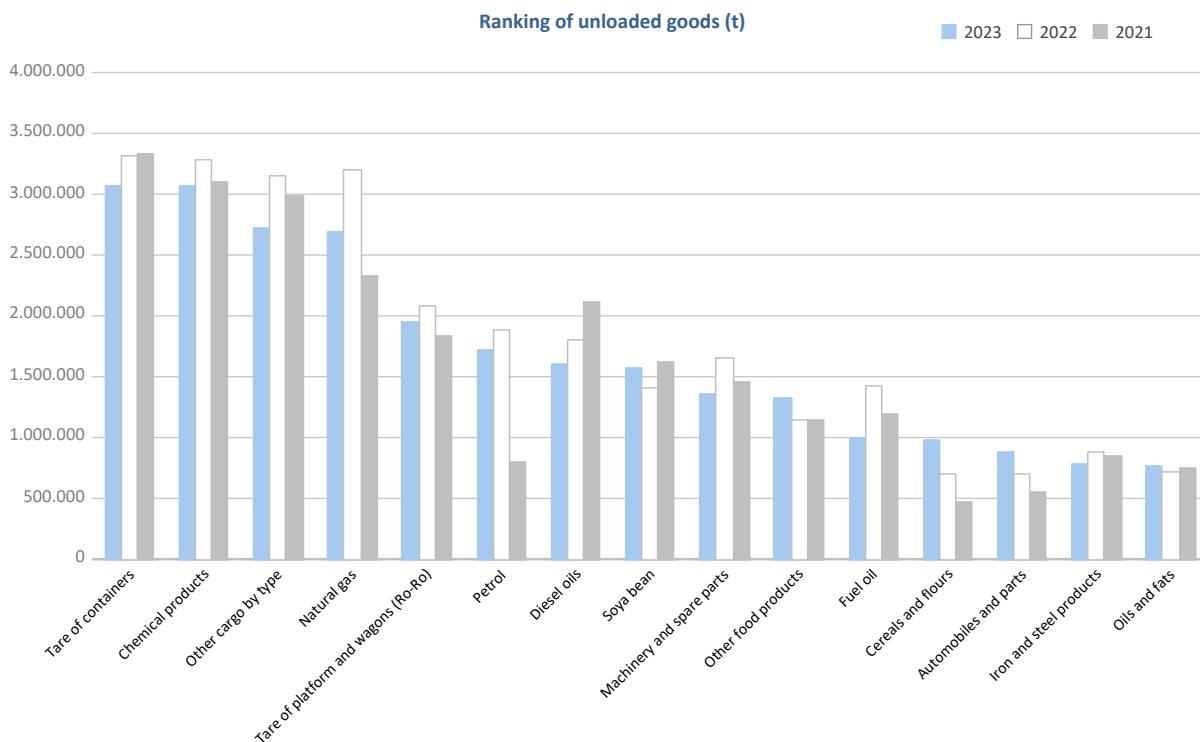
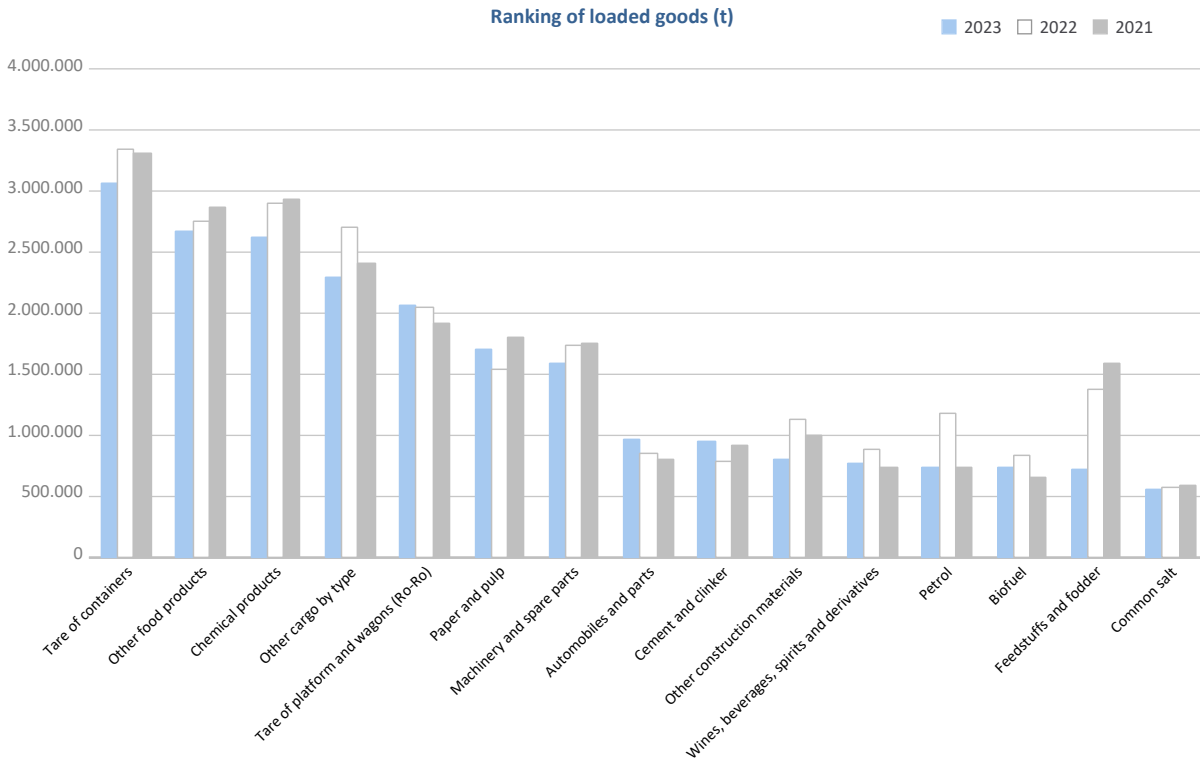
## GOODS TRAFFIC

Goods by classification 4.3.7.	Monthly accumulated				% of total accum. 2023
	2022	2023	Diff. 23-22	%	
<b>Tonnes</b>	<b>63.244.924</b>	<b>57.474.059</b>	<b>-5.770.865</b>	<b>-9,1%</b>	<b>100%</b>
<b>Energy</b>	<b>12.570.225</b>	<b>10.353.287</b>	<b>-2.216.939</b>	<b>-17,6%</b>	<b>18,0%</b>
Crude oil	241	34	-206	-85,7%	0,0%
Fuel oil	1.570.474	1.123.731	-446.742	-28,4%	2,0%
Diesel oils	2.244.276	1.954.245	-290.031	-12,9%	3,4%
Petrol	3.061.045	2.472.666	-588.379	-19,2%	4,3%
Other petroleum products	440.228	296.763	-143.465	-32,6%	0,5%
Petroleum fuel gasses	45.508	53.864	8.356	18,4%	0,1%
Coal	113.511	69.668	-43.842	-38,6%	0,1%
Natural gas	3.469.722	2.957.128	-512.594	-14,8%	5,1%
Biofuel	1.625.221	1.425.185	-200.036	-12,3%	2,5%
<b>Iron, steel and metallurgical products</b>	<b>2.756.050</b>	<b>2.540.524</b>	<b>-215.526</b>	<b>-7,8%</b>	<b>4,4%</b>
Iron ore	8.704	4.032	-4.672	-53,7%	0,0%
Other minerals and metallic waste	349.363	362.367	13.004	3,7%	0,6%
Scrap iron	473.861	539.323	65.463	13,8%	0,9%
Iron and steel products	1.360.060	1.179.473	-180.586	-13,3%	2,1%
Other metallurgical products	564.063	455.328	-108.735	-19,3%	0,8%
<b>Non-metallic minerals</b>	<b>1.081.784</b>	<b>962.078</b>	<b>-119.706</b>	<b>-11,1%</b>	<b>1,7%</b>
Common salt	607.344	570.302	-37.042	-6,1%	1,0%
Other non-metallic minerals	474.440	391.776	-82.663	-17,4%	0,7%
<b>Fertilizers</b>	<b>802.504</b>	<b>643.881</b>	<b>-158.623</b>	<b>-19,8%</b>	<b>1,1%</b>
Phosphates	715	219	-496	-69,4%	0,0%
Potashes	610.973	451.177	-159.796	-26,2%	0,8%
Natural/artificial fertilizer	190.816	192.485	1.669	0,9%	0,3%
<b>Chemicals</b>	<b>6.189.297</b>	<b>5.694.946</b>	<b>-494.350</b>	<b>-8,0%</b>	<b>9,9%</b>
Chemical products	6.189.297	5.694.946	-494.350	-8,0%	9,9%
<b>Construction materials</b>	<b>2.906.225</b>	<b>2.453.888</b>	<b>-452.338</b>	<b>-15,6%</b>	<b>4,3%</b>
Asphalt	4.886	7.932	3.046	62,3%	0,0%
Cement and clinker	878.985	990.007	111.022	12,6%	1,7%
Other construction materials	2.022.354	1.455.948	-566.406	-28,0%	2,5%
<b>Agriculture, livestock and food</b>	<b>12.639.333</b>	<b>12.008.718</b>	<b>-630.615</b>	<b>-5,0%</b>	<b>20,9%</b>
Cereals and flours	862.221	1.126.150	263.928	30,6%	2,0%
Soya bean	1.565.302	1.790.667	225.365	14,4%	3,1%
Fruits, vegetables, pulses	610.703	495.530	-115.173	-18,9%	0,9%
Wines, beverages, spirits and derivatives	1.094.809	899.837	-194.972	-17,8%	1,6%
Canned goods	305.644	309.907	4.263	1,4%	0,5%
Tobacco, coffee, cocoa	876.811	733.572	-143.238	-16,3%	1,3%
Oils and fats	1.153.453	1.152.612	-841	-0,1%	2,0%
Other food products	3.894.447	4.000.114	105.667	2,7%	7,0%
Frozen fish	681.629	632.862	-48.767	-7,2%	1,1%
Feedstuffs and fodder	1.594.314	867.469	-726.846	-45,6%	1,5%
<b>Other cargo</b>	<b>11.966.718</b>	<b>10.820.093</b>	<b>-1.146.625</b>	<b>-9,6%</b>	<b>18,8%</b>
Timber	469.453	405.459	-63.994	-13,6%	0,7%
Paper and pulp	2.248.231	2.447.052	198.821	8,8%	4,3%
Machinery and spare parts	3.393.443	2.956.269	-437.174	-12,9%	5,1%
Other cargo by type	5.855.591	5.011.313	-844.278	-14,4%	8,7%
<b>Vehicles and transport parts</b>	<b>12.332.786</b>	<b>11.996.643</b>	<b>-336.144</b>	<b>-2,7%</b>	<b>20,9%</b>
Automobiles and parts	1.553.468	1.852.077	298.609	19,2%	3,2%
Tare of platform and wagons (Ro-Ro)	4.130.677	4.011.316	-119.361	-2,9%	7,0%
Tare of containers	6.648.642	6.133.250	-515.392	-7,8%	10,7%

# GOODS TRAFFIC

## Goods by classification 4.3.7.

### Ranking of goods (tonnes)

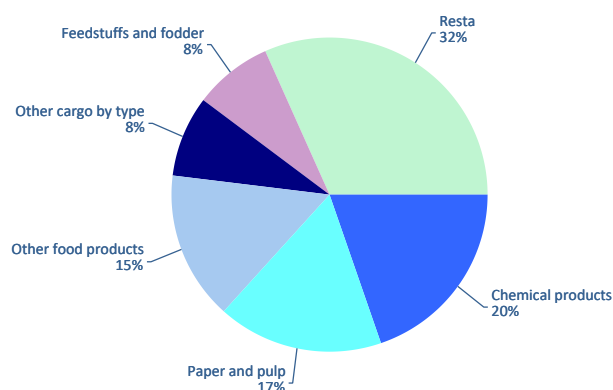


## GOODS TRAFFIC

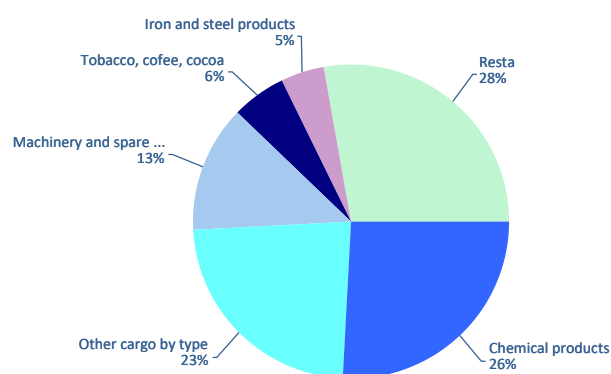
### Containerized goods by classification 4.3.7. (Tares & transits not included)

Containerized goods classification	Loaded			Unloaded			Total monthly accumulated		
	2022	2023	%	2022	2023	%	2022	2023	%
<b>Total tonnes (tares &amp; transits not included)</b>	<b>8.248.133</b>	<b>7.225.397</b>	<b>-12,4%</b>	<b>5.313.682</b>	<b>5.378.521</b>	<b>1,2%</b>	<b>13.561.815</b>	<b>12.603.918</b>	<b>-7,1%</b>
Chemical products	1.678.387	1.434.714	-14,5%	1.203.581	1.389.245	15,4%	2.881.968	2.823.959	-2,0%
Other cargo by type	643.636	595.701	-7,4%	1.365.156	1.259.355	-7,8%	2.008.792	1.855.056	-7,7%
Paper and pulp	1.083.762	1.220.127	12,6%	169.478	162.436	-4,2%	1.253.240	1.382.563	10,3%
Other food products	1.314.610	1.096.025	-16,6%	76.501	96.700	26,4%	1.391.111	1.192.725	-14,3%
Machinery and spare parts	443.697	427.514	-3,6%	819.063	691.296	-15,6%	1.262.760	1.118.810	-11,4%
Feedstuffs and fodder	1.110.466	586.302	-47,2%	30.277	49.752	64,3%	1.140.743	636.053	-44,2%
Other construction materials	320.707	241.155	-24,8%	201.233	205.303	2,0%	521.940	446.459	-14,5%
Wines, beverages, spirits and derivatives	376.517	385.700	2,4%	48.647	35.139	-27,8%	425.164	420.838	-1,0%
Iron and steel products	141.033	156.074	10,7%	276.190	246.652	-10,7%	417.224	402.726	-3,5%
Tobacco, coffee, cocoa	77.652	72.777	-6,3%	313.425	300.789	-4,0%	391.077	373.566	-4,5%
Automobiles and parts	123.178	122.285	-0,7%	148.916	196.732	32,1%	272.094	219.016	-17,2%
Other metallurgical products	77.520	82.676	6,7%	167.569	149.977	-10,5%	245.089	232.653	-5,1%
Other minerals and metallic waste	154.627	166.371	7,6%	25.194	26.152	3,8%	179.821	192.523	7,1%
Other non-metallic minerals	103.136	104.009	0,8%	71.228	82.601	16,0%	174.364	186.610	7,0%
Oils and fats	157.881	125.766	-20,3%	35.511	39.391	10,9%	193.391	165.157	-14,6%
Fruits, vegetables, pulses	43.389	35.768	-17,6%	104.505	127.111	21,6%	147.894	162.879	10,1%
Canned goods	72.645	65.496	-9,8%	62.077	93.001	49,8%	134.722	158.497	17,6%
Biofuel	100.623	92.122	-8,4%	25.318	24.579	-2,9%	125.941	116.701	-7,3%
Natural/artificial fertilizer	47.401	39.137	-17,4%	29.860	49.407	65,5%	77.261	88.544	14,6%
Cereals and flours	39.223	53.200	35,6%	16.784	29.336	74,8%	56.007	82.536	47,4%
Scrap iron	27.812	24.829	-10,7%	17.520	20.329	16,0%	45.332	45.157	-0,4%
Frozen fish	8.647	5.607	-35,1%	44.733	35.066	-21,6%	53.380	40.674	-23,8%
Timber	17.775	10.849	-39,0%	18.972	21.099	11,2%	36.747	31.948	-13,1%
Other petroleum products	21.186	17.985	-15,1%	12.519	13.244	5,8%	33.705	31.229	-7,3%
Common salt	28.749	28.501	-0,9%	2.320	2.124	-8,4%	31.069	30.625	-1,4%
Coal	2.568	1.785	-30,5%	18.577	22.302	20,0%	21.145	24.087	13,9%
Fuel oil	8.844	6.864	-22,4%	3.438	5.441	58,3%	12.282	12.305	0,2%
Cement and clinker	14.756	12.136	-17,8%	5	77	1419,3%	14.762	12.213	-17,3%
Petroleum fuel gasses	2.792	7.124	155,1%	150	930	521,1%	2.942	8.054	173,8%
Asphalt	3.900	5.770	47,9%	17	16	-4,5%	3.917	5.786	47,7%
Potashes	274	189	-30,9%	2.089	1.518	-27,3%	2.363	1.707	-27,7%
Soya bean	34	3	-90,9%	2.221	1.016	-54,3%	2.255	1.019	-54,8%
Diesel oils	0	606		25	0	-98,6%	25	607	2301,3%
Iron ore	170	72	-57,5%	338	367	8,6%	508	439	-13,6%
Phosphates	405	107	-73,6%	88	0		493	107	-78,3%
Petrol	117	36	-69,6%	157	16	-89,8%	274	52	-81,2%
Crude oil	9	12	35,4%	0	22		9	34	276,4%
Natural gas	4	2	-50,9%	0	0		4	2	-50,9%

Distribution of main goods  
Loaded 2023



Distribution of main goods  
Unloaded 2023

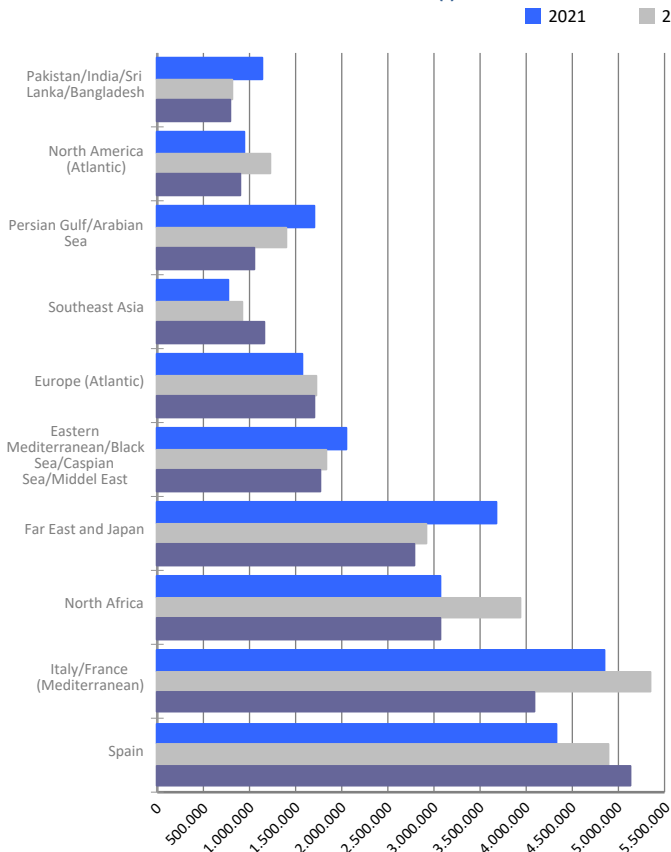


# MARITIME TRAFFIC BY ORIGIN/DESTINATION

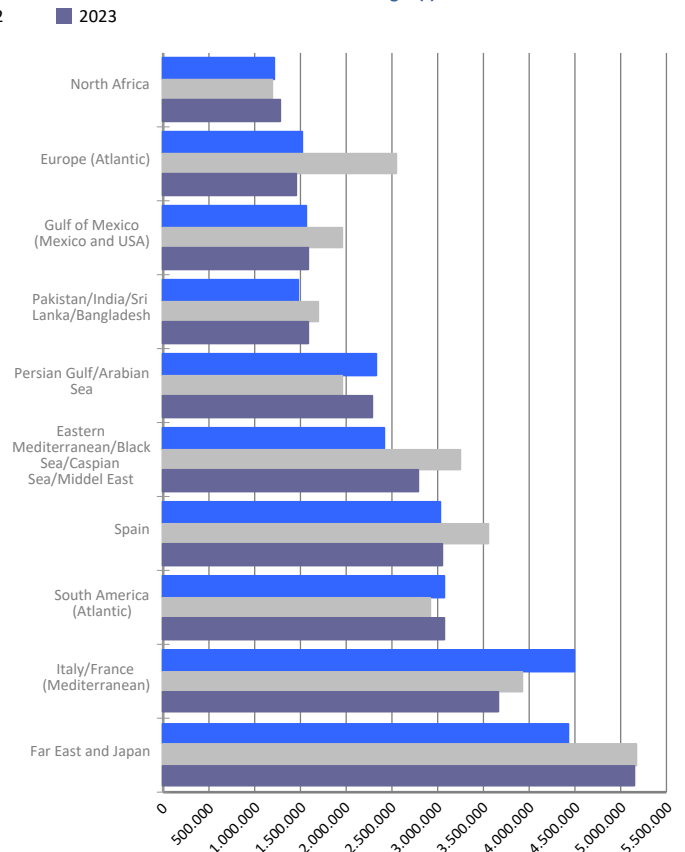
## Geographical areas. Tonnes

Geographical areas	Monthly accumulated				% of total accum. 2023
	2022	2023	Diff. 23-22	%	
<b>Tonnes</b>	<b>63.244.924</b>	<b>57.474.059</b>	<b>-5.770.865</b>	<b>-9,1%</b>	<b>100%</b>
Spain	8.431.591	8.180.359	-251.232	-3,0%	14,2%
Far East and Japan	8.106.047	7.953.024	-153.023	-1,9%	13,8%
Italy/France (Mediterranean)	9.270.351	7.751.190	-1.519.161	-16,4%	13,5%
Eastern Mediterranean/Black Sea/Caspian Sea/Middel	5.071.092	4.552.809	-518.283	-10,2%	7,9%
North Africa	5.134.248	4.346.049	-788.199	-15,4%	7,6%
South America (Atlantic)	3.762.156	3.530.308	-231.847	-6,2%	6,1%
Persian Gulf/Arabian Sea	3.369.895	3.347.438	-22.456	-0,7%	5,8%
Europe (Atlantic)	4.290.721	3.160.762	-1.129.959	-26,3%	5,5%
Pakistan/India/Sri Lanka/Bangladesh	2.519.089	2.390.367	-128.722	-5,1%	4,2%
Gulf of Mexico (Mexico and USA)	2.835.563	2.355.793	-479.770	-16,9%	4,1%
Southeast Asia	2.172.192	2.295.595	123.403	5,7%	4,0%
West Africa	1.541.799	1.402.065	-139.734	-9,1%	2,4%
North America (Atlantic)	1.531.525	1.327.403	-204.122	-13,3%	2,3%
Canada (Atlantic) and Great Lakes	1.306.476	1.109.102	-197.374	-15,1%	1,9%
Central America and Caribbean	1.194.460	1.087.006	-107.453	-9,0%	1,9%
Red Sea	873.294	864.272	-9.023	-1,0%	1,5%
South America (Pacific)	537.538	533.629	-3.909	-0,7%	0,9%
Unknown area (Tare of empty containers)	382.790	495.066	112.276	29,3%	0,9%
South-Eastern Africa/Indian Ocean	542.755	477.287	-65.468	-12,1%	0,8%
Australia, New Zealand/Pacific Islands	222.261	201.731	-20.530	-9,2%	0,4%
North America (Pacific)	149.081	112.801	-36.280	-24,3%	0,2%

Main areas of destination (t)



Main areas of origin (t)

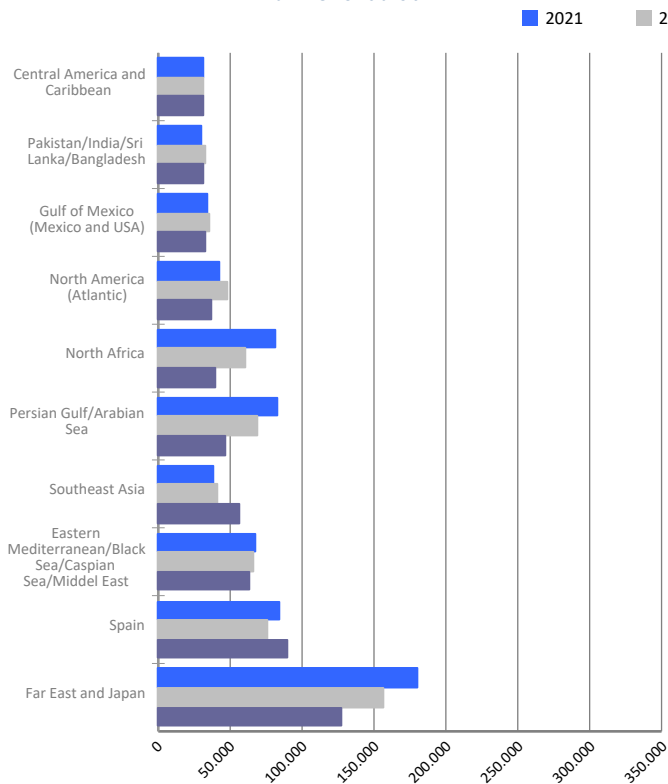


# MARITIME TRAFFIC BY ORIGIN/DESTINATION

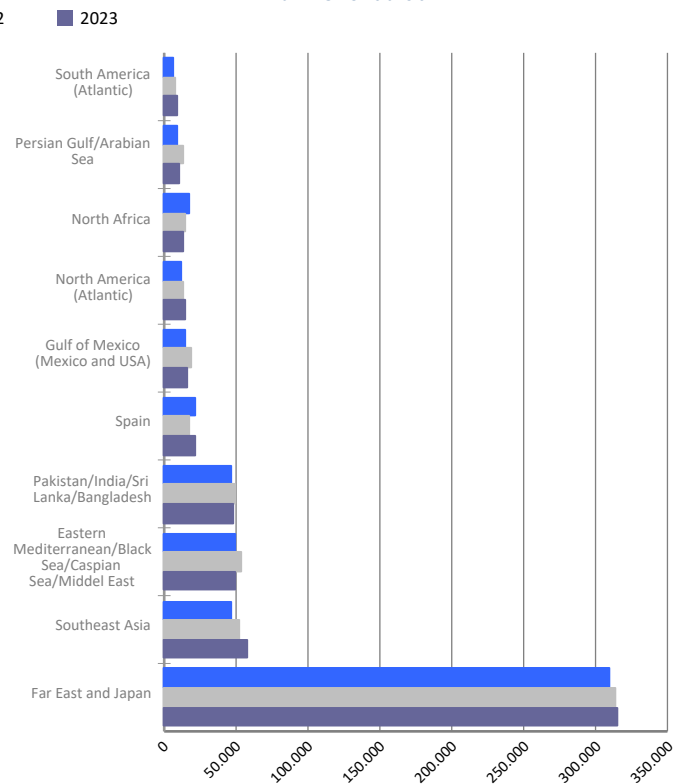
## Geographical areas. Full TEU non transit

Geographical areas	Monthly accumulated				% of total accum. 2023
	2022	2023	Diff. 23-22	%	
<b>Full TEU non transit</b>	<b>1.368.874</b>	<b>1.298.143</b>	<b>-70.731</b>	<b>-5,2%</b>	<b>100%</b>
Far East and Japan	471.208	441.733	-29.476	-6,3%	34,0%
Southeast Asia	93.301	113.632	20.331	21,8%	8,8%
Eastern Mediterranean/Black Sea/Caspian Sea/Middel East	119.579	113.194	-6.385	-5,3%	8,7%
Spain	93.399	111.548	18.149	19,4%	8,6%
Pakistan/India/Sri Lanka/Bangladesh	82.257	80.168	-2.089	-2,5%	6,2%
Persian Gulf/Arabian Sea	82.351	57.830	-24.522	-29,8%	4,5%
North Africa	76.054	53.454	-22.600	-29,7%	4,1%
North America (Atlantic)	62.214	51.814	-10.400	-16,7%	4,0%
Gulf of Mexico (Mexico and USA)	54.739	48.337	-6.402	-11,7%	3,7%
Central America and Caribbean	38.193	38.010	-183	-0,5%	2,9%
South America (Atlantic)	34.421	32.372	-2.050	-6,0%	2,5%
South America (Pacific)	32.038	28.877	-3.161	-9,9%	2,2%
Red Sea	26.355	26.748	393	1,5%	2,1%
West Africa	26.830	25.926	-904	-3,4%	2,0%
South-Eastern Africa/Indian Ocean	24.720	22.612	-2.108	-8,5%	1,7%
Italy/France (Mediterranean)	11.063	18.336	7.273	65,7%	1,4%
Canada (Atlantic) and Great Lakes	14.437	12.177	-2.261	-15,7%	0,9%
Australia, New Zealand/Pacific Islands	11.472	10.822	-651	-5,7%	0,8%
North America (Pacific)	7.439	6.346	-1.093	-14,7%	0,5%
Europe (Atlantic)	6.806	4.212	-2.595	-38,1%	0,3%

Main areas of destination  
Full TEU non transit



Main areas of origin  
Full TEU non transit



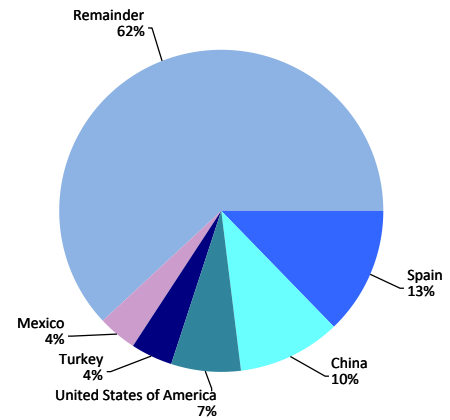
Note: From August 2014, the containerized cargo with origin or destination in Barcelona excludes maritime transit traffic and empty containers.

# MARITIME TRAFFIC BY ORIGIN/DESTINATION

## Ranking countries. Full TEU non transit

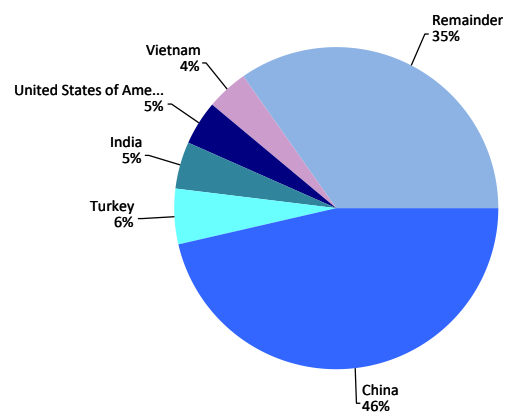
Loaded	Full TEU	% 23-22	% a/packaging
Spain	89.688	19,2%	12,9%
China	70.916	-15,8%	10,2%
United States of America	48.580	-23,1%	7,0%
Turkey	28.491	-14,1%	4,1%
Mexico	27.365	-5,3%	3,9%
United Arab Emirates	26.421	-37,4%	3,8%
India	26.278	1,1%	3,8%
Saudi Arabia	24.968	-7,3%	3,6%
Japan	21.941	-14,4%	3,2%
Morocco	19.947	1,1%	2,9%
Malaysia	16.156	57,5%	2,3%
Korea (South)	15.253	-35,8%	2,2%
Vietnam	13.460	63,4%	1,9%
Israel	13.024	35,1%	1,9%
Indonesia	12.666	33,6%	1,8%
Remainder	240.567	-14,5%	34,6%
<b>TOTAL</b>	<b>695.719</b>	<b>-9,4%</b>	<b>100%</b>

Main countries. Loaded



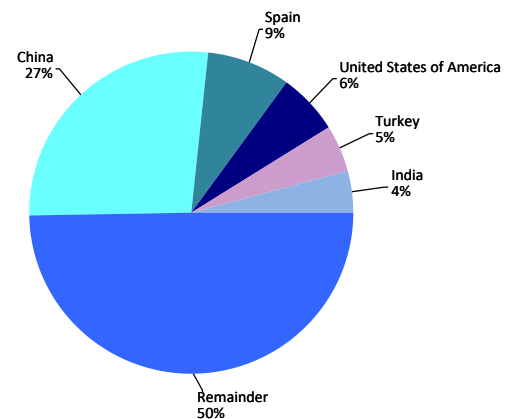
Unloaded	Full TEU	% 23-22	% a/packaging
China	278.739	-1,5%	46,3%
Turkey	34.757	-10,5%	5,8%
India	27.596	-1,7%	4,6%
United States of America	27.344	-1,8%	4,5%
Vietnam	25.095	17,2%	4,2%
Spain	21.861	20,6%	3,6%
Korea (South)	21.305	47,4%	3,5%
Bangladesh	12.383	1,3%	2,1%
Egypt	10.489	4,9%	1,7%
Saudi Arabia	9.696	-14,3%	1,6%
Greece	8.169	3,3%	1,4%
Indonesia	7.778	-7,1%	1,3%
Pakistan	7.316	-10,9%	1,2%
Thailand	7.039	7,4%	1,2%
Brazil	6.828	17,8%	1,1%
Remainder	96.032	-2,8%	15,9%
<b>TOTAL</b>	<b>602.424</b>	<b>0,2%</b>	<b>100%</b>

Main countries. Unloaded



Total	Full TEU	% 23-22	% a/packaging
China	349.655	-4,8%	26,9%
Spain	111.548	19,4%	8,6%
United States of America	75.924	-16,6%	5,8%
Turkey	63.248	-12,2%	4,9%
India	53.874	-0,4%	4,2%
Vietnam	38.555	30,0%	3,0%
Korea (South)	36.558	-4,4%	2,8%
Saudi Arabia	34.664	-9,3%	2,7%
Mexico	33.439	-9,2%	2,6%
United Arab Emirates	29.473	-35,3%	2,3%
Japan	28.581	-10,6%	2,2%
Morocco	22.171	0,8%	1,7%
Egypt	21.696	-4,1%	1,7%
Indonesia	20.444	14,5%	1,6%
Malaysia	19.773	37,0%	1,5%
Remainder	358.542	-8,9%	27,6%
<b>TOTAL</b>	<b>1.298.143</b>	<b>-5,2%</b>	<b>100%</b>

Main countries. Total



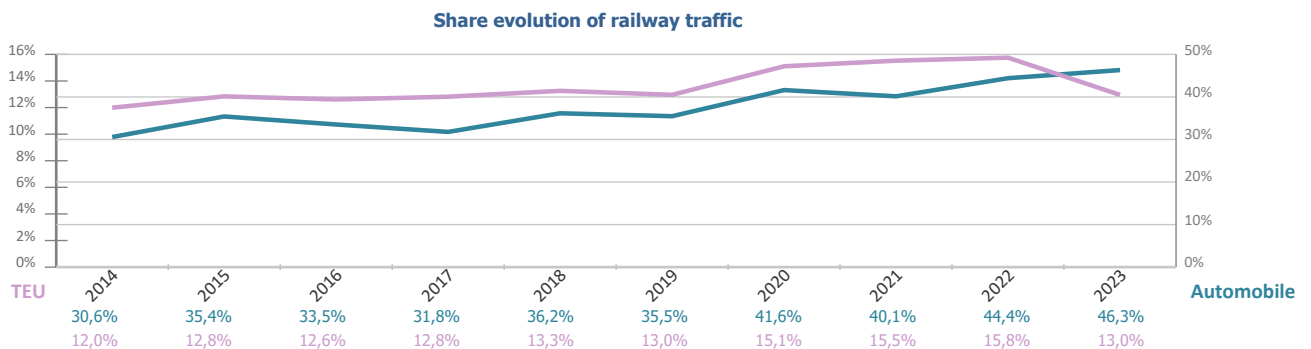
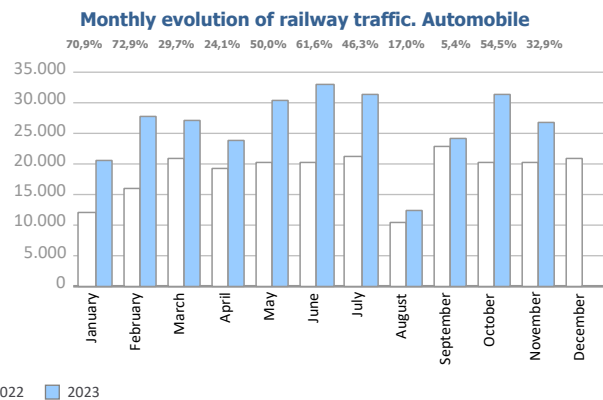
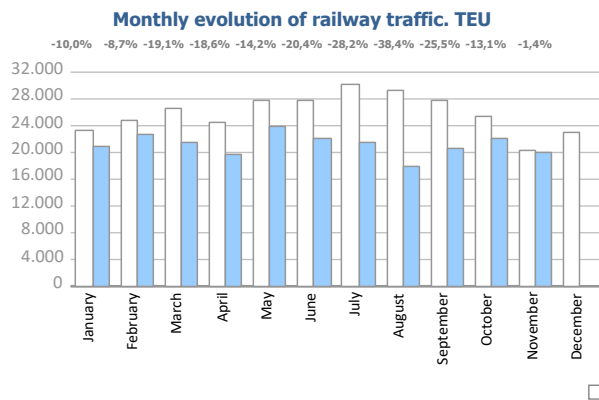
# RAILWAY TRAFFIC

## Monthly evolution of railway traffic. TEU

Monthly evolution of railway traffic	TEU 2022			TEU 2023			%		% of total port traffic 2023
	Loaded	Unloaded	Total	Loaded	Unloaded	Total	Monthly	Accumulated	
January	11.274	12.091	<b>23.365</b>	10.614	10.417	<b>21.031</b>	-10,0%	-10,0%	13,6%
February	12.294	12.497	<b>24.791</b>	11.229	11.403	<b>22.632</b>	-8,7%	-9,3%	14,9%
March	13.540	13.035	<b>26.575</b>	9.950	11.541	<b>21.491</b>	-19,1%	-12,8%	13,0%
April	13.270	11.110	<b>24.380</b>	9.763	10.085	<b>19.848</b>	-18,6%	-14,2%	13,1%
May	14.315	13.567	<b>27.882</b>	12.539	11.384	<b>23.923</b>	-14,2%	-14,2%	13,5%
June	15.453	12.479	<b>27.932</b>	10.527	11.702	<b>22.229</b>	-20,4%	-15,3%	12,8%
July	14.408	15.703	<b>30.111</b>	10.558	11.059	<b>21.617</b>	-28,2%	-17,4%	12,6%
August	14.848	14.420	<b>29.268</b>	9.139	8.899	<b>18.038</b>	-38,4%	-20,3%	10,9%
September	13.334	14.386	<b>27.720</b>	9.984	10.656	<b>20.640</b>	-25,5%	-20,9%	12,7%
October	10.749	14.502	<b>25.251</b>	10.745	11.209	<b>21.954</b>	-13,1%	-20,2%	13,8%
November	9.336	11.032	<b>20.368</b>	7.871	12.205	<b>20.076</b>	-1,4%	-18,8%	11,9%
December	11.310	11.693	<b>23.003</b>						
<b>Total</b>	<b>154.131</b>	<b>156.515</b>	<b>310.646</b>	<b>112.919</b>	<b>120.560</b>	<b>233.479</b>			<b>13,0%</b>

## Monthly evolution of railway traffic. Automobile

Monthly evolution of railway traffic	Automobile 2022			Automobile 2023			%		% of total port traffic 2023
	Loaded	Unloaded	Total	Loaded	Unloaded	Total	Monthly	Accumulated	
January	1.359	10.591	<b>11.950</b>	4.150	16.267	<b>20.417</b>	70,9%	70,9%	50,7%
February	2.174	13.813	<b>15.987</b>	5.096	22.553	<b>27.649</b>	72,9%	72,1%	43,1%
March	2.418	18.583	<b>21.001</b>	3.567	23.677	<b>27.244</b>	29,7%	53,9%	42,7%
April	2.670	16.613	<b>19.283</b>	4.515	19.415	<b>23.930</b>	24,1%	45,5%	41,5%
May	2.602	17.588	<b>20.190</b>	5.929	24.358	<b>30.287</b>	50,0%	46,5%	47,7%
June	2.449	17.909	<b>20.358</b>	5.878	27.021	<b>32.899</b>	61,6%	49,3%	49,5%
July	2.309	19.053	<b>21.362</b>	6.807	24.450	<b>31.257</b>	46,3%	48,8%	49,3%
August	2.620	7.962	<b>10.582</b>	1.982	10.394	<b>12.376</b>	17,0%	46,4%	31,7%
September	2.564	20.415	<b>22.979</b>	5.584	18.633	<b>24.217</b>	5,4%	40,7%	51,6%
October	1.750	18.476	<b>20.226</b>	6.117	25.138	<b>31.255</b>	54,5%	42,2%	57,3%
November	3.947	16.269	<b>20.216</b>	5.350	21.525	<b>26.875</b>	32,9%	41,3%	42,8%
December	3.619	17.133	<b>20.752</b>						
<b>Total</b>	<b>30.481</b>	<b>194.405</b>	<b>224.886</b>	<b>54.975</b>	<b>233.431</b>	<b>288.406</b>			<b>46,3%</b>

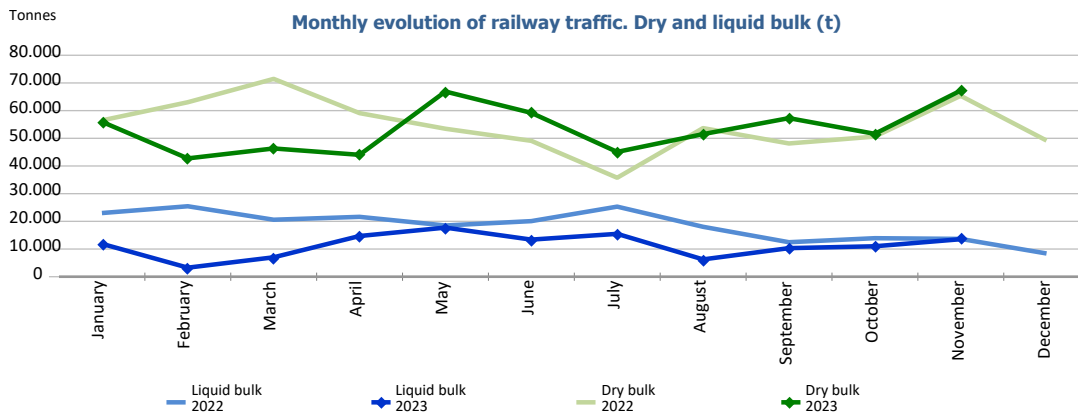




# RAILWAY TRAFFIC

## Monthly evolution of railway traffic. Dry and liquid bulk. Tonnes

Monthly evolution of railway traffic	Tonnes 2022			Tonnes 2023			%	
	Dry bulk	Liquid bulk	Total	Dry bulk	Liquid bulk	Total	Monthly	Accumulated
January	56.474	23.006	<b>79.480</b>	55.964	11.888	<b>67.852</b>	-14,6%	-14,6%
February	63.027	25.451	<b>88.478</b>	42.746	3.263	<b>46.009</b>	-48,0%	-32,2%
March	71.467	20.589	<b>92.056</b>	46.334	7.014	<b>53.348</b>	-42,0%	-35,7%
April	59.099	21.628	<b>80.727</b>	44.027	14.701	<b>58.728</b>	-27,3%	-33,7%
May	53.459	18.505	<b>71.964</b>	66.894	17.738	<b>84.632</b>	17,6%	-24,7%
June	49.089	20.079	<b>69.168</b>	59.200	13.398	<b>72.598</b>	5,0%	-20,5%
July	35.755	25.317	<b>61.072</b>	45.081	15.485	<b>60.566</b>	-0,8%	-18,3%
August	53.685	18.038	<b>71.723</b>	51.511	6.251	<b>57.762</b>	-19,5%	-18,4%
September	48.129	12.463	<b>60.592</b>	57.280	10.320	<b>67.600</b>	11,6%	-15,7%
October	50.628	13.911	<b>64.539</b>	51.617	10.995	<b>62.612</b>	-3,0%	-14,6%
November	65.362	13.659	<b>79.021</b>	67.236	13.547	<b>80.783</b>	2,2%	-13,0%
December	49.199	8.395	<b>57.594</b>					
<b>Total</b>	<b>655.373</b>	<b>221.041</b>	<b>876.414</b>	<b>587.890</b>	<b>124.600</b>	<b>712.490</b>		



## Railway traffic.

Railway gauge traffic (u)	Monthly accumulated		%	% of accumulated total 2023
	2022	2023		
Iberian gauge	7.801	6.510	-16,5%	67,2%
UIC	290	489	68,6%	5,0%
FGC	2.319	2.694	16,2%	27,8%
<b>Total</b>	<b>10.410</b>	<b>9.693</b>	<b>-6,9%</b>	<b>100%</b>

