

Port of Barcelona traffic statistics

Accumulated data October 2023

Statistics Service

Index

Traffic indicators

Total traffic	3
Main indicators	4
Breakdown of total traffic	5
Breakdown of traffic in transit	6
Monthly evolution of traffic	7

Container traffic

TEU evolution	8
Container traffic (TEU)	9

Passenger traffic

Passenger traffic	10
Passenger classification	11

Automobile traffic

Automobile traffic	12
--------------------	----

Short Sea Shipping traffic (SSS)

SSS Goods classification	13
SSS General cargo and Motorways of the sea (MoS)	14
SSS Ranking countries	15

Vessel traffic

Vessel traffic	16
----------------	----

Goods traffic

Mode of packaging and navigation	17
Goods by classification 4.3.7.	18
Goods ranking	19
Containerized goods by classification 4.3.7.	20

Maritime traffic by origin/destination

Geographical areas. Tonnes	21
Geographical areas. Full TEU non transit	22
Ranqing countries. Full TEU non transit	23

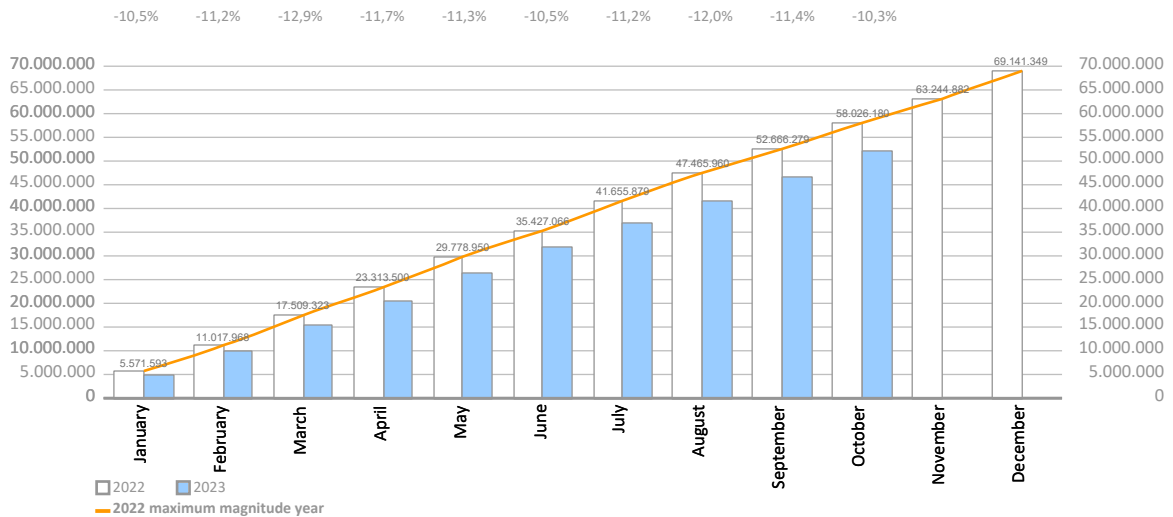
Railway traffic

Evolution of railway traffic (TEU and automobile)	24
Evolution of railway traffic (Solid and liquid bulk)	25
Railway gauge traffic	25

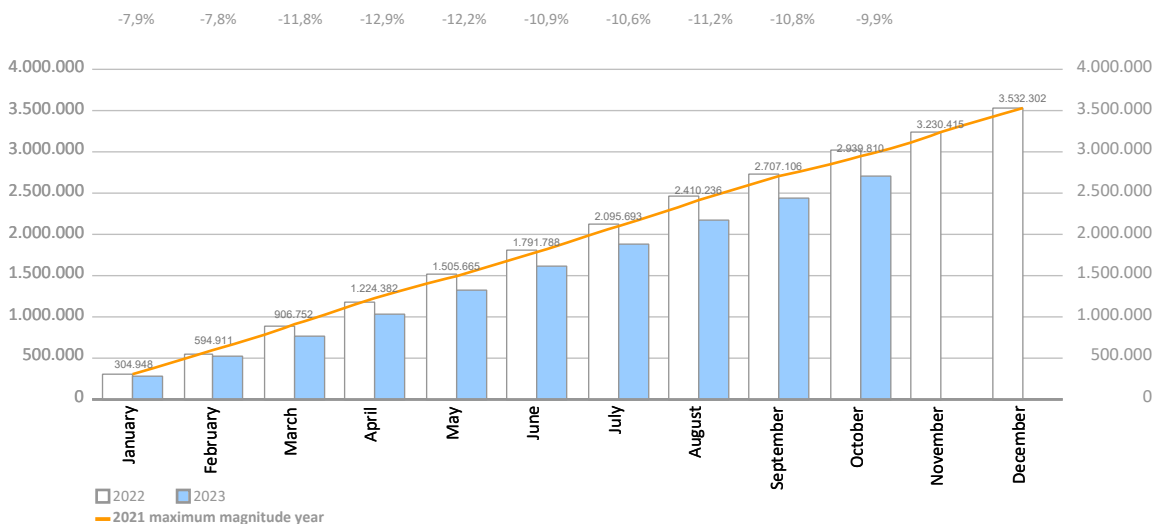
TRAFFIC INDICATORS

Total traffic	Monthly accumulated				% 23-22 accum. September	% 23-22 accum. August	Total traffic 2022
	2022	2023	Diff. 23-22	%			
Total throughput (tonnes)	58.026.180	52.029.273	-5.996.908	-10,3%	-11,4%	-12,0%	69.141.349
Supplies	1.589.145	1.306.288	-282.858	-17,8%	-17,7%	-17,5%	1.854.561
Fishing	2.952	1.418	-1.534	-52,0%	-51,1%	-50,1%	3.201
TOTAL TRAFFIC (tonnes)	59.618.278	53.336.978	-6.281.299	-10,5%	-11,6%	-12,1%	70.999.111
TEU	3.015.258	2.718.041	-297.218	-9,9%	-10,8%	-11,2%	3.525.041
UTI	357.455	353.716	-3.739	-1,0%	-1,2%	-1,2%	419.191
Automobiles (units)	441.478	653.285	211.807	48,0%	56,0%	64,4%	591.158
Vessels (units)	7.290	7.406	116	1,6%	1,8%	1,9%	8.713
Railway traffic (units)	9.489	8.740	-749	-7,9%	-9,0%	-9,1%	11.234
Cruise passengers (units)	2.044.493	3.138.174	1.093.681	53,5%	59,7%	68,3%	2.334.305
Ferry passengers (units)	1.439.400	1.572.248	132.848	9,2%	9,0%	9,0%	1.596.267
Automobile passengers (units)	436.365	463.972	27.607	6,3%	5,8%	5,2%	484.993

Monthly evolution of the accumulated traffic of goods. Tonnes



Monthly evolution of the accumulated traffic of goods. TEU



TRAFFIC INDICATORS

Main indicators	Monthly accumulated				Last 12 months	Total traffic 2022	% 12 months-2022
	2022	2023	Diff. 23-22	%			

Goods indicators by navigation and operation (tonnes)

	2022	2023	Diff. 23-22	%	Last 12 months	Total traffic 2022	% 12 months-2022
Navigation (t)	58.026.180	52.029.273	-5.996.908	-10,3%	63.144.441	69.141.349	-8,7%
Domestic	6.973.933	6.857.583	-116.350	-1,7%	8.169.867	8.286.217	-1,4%
Foreign	51.052.248	45.171.690	-5.880.558	-11,5%	54.974.574	60.855.132	-9,7%
Operation (t)	58.026.180	52.029.273	-5.996.908	-10,3%	63.144.441	69.141.349	-8,7%
Loaded	16.945.018	16.174.762	-770.256	-4,5%	19.442.628	20.212.884	-3,8%
Unloaded	19.371.808	19.041.275	-330.533	-1,7%	22.982.185	23.312.719	-1,4%
Transit	21.709.354	16.813.236	-4.896.119	-22,6%	20.719.628	25.615.747	-19,1%

Goods indicators by main units

	2022	2023	Diff. 23-22	%	Last 12 months	Total traffic 2022	% 12 months-2022
Containers (TEU)	3.015.258	2.718.041	-297.218	-9,9%	3.227.823	3.525.041	-8,4%
TEU O/D	1.668.694	1.633.919	-34.775	-2,1%	1.937.979	1.972.754	-1,8%
TEU transit	1.346.564	1.084.122	-262.442	-19,5%	1.289.845	1.552.287	-16,9%
Containerized tonnes	32.346.160	27.785.486	-4.560.675	-14,1%	33.065.247	37.625.922	-12,1%
Level of containerization	77,10%	74,49%			74,52%	76,75%	
Passengers (u)	3.483.893	4.710.422	1.226.529	35,2%	5.157.101	3.930.572	31,2%
Regular line	1.439.400	1.572.248	132.848	9,2%	1.729.115	1.596.267	8,3%
Pleasure cruises	2.044.493	3.138.174	1.093.681	53,5%	3.427.986	2.334.305	46,9%
Automobiles (u)	441.478	653.285	211.807	48,0%	802.965	591.158	35,8%
Loaded	254.800	345.898	91.098	35,8%	418.977	327.879	27,8%
Unloaded	123.499	212.589	89.090	72,1%	267.776	178.686	49,9%
Transit	63.179	94.798	31.619	50,0%	116.212	84.593	37,4%
Vessels (u)	7.290	7.406	116	1,6%	8.829	8.713	1,3%
Number of calls	7.290	7.406	116	1,6%	8.829	8.713	1,3%
GT	294.708.182	317.253.657	22.545.475	7,7%	373.420.223	350.874.748	6,4%
Average tonnes by vessel	7.960	7.025	-934	-11,7%	7.152	7.935	-9,9%
UTI	357.455	353.716	-3.739	-1,0%	415.452	419.191	-0,9%
Domestic	218.390	224.307	5.918	2,7%	259.592	253.675	2,3%
% Full	61,1%	61,8%			61,8%	61,3%	
Foreign	139.065	129.409	-9.657	-6,9%	155.860	165.516	-5,8%
% Full	92,6%	91,6%			91,8%	92,7%	

TRAFFIC INDICATORS

Breakdown of total traffic (tonnes)	Monthly accumulated				% 23-22 accum. September	% 23-22 accum. August	% of total accum. 2023
	2022	2023	Diff. 23-22	%			
Goods indicators by type of packaging (t)	58.026.180	52.029.273	-5.996.908	-10,3%	-11,4%	-12,0%	100%
Liquid bulk	12.410.989	10.733.289	-1.677.701	-13,5%	-16,0%	-18,7%	20,6%
Hydrocarbons	9.515.261	7.837.891	-1.677.370	-17,6%	-20,8%	-23,7%	15,1%
Natural gas	3.144.717	2.667.637	-477.081	-15,2%	-20,3%	-25,8%	5,1%
Petrol	2.701.135	2.232.775	-468.360	-17,3%	-24,0%	-27,2%	4,3%
Diesel oils	1.922.266	1.739.172	-183.095	-9,5%	-6,1%	-6,8%	3,3%
Fuel oil	1.392.764	998.012	-394.752	-28,3%	-26,2%	-24,2%	1,9%
Other petroleum products	336.206	179.954	-156.252	-46,5%	-58,6%	-63,6%	0,3%
Remainder	18.173	20.342	2.169	11,9%	25,1%	28,0%	0,0%
Other liquid bulk	2.895.728	2.895.398	-331	-0,0%	-0,3%	-1,9%	5,6%
Biofuel	1.316.435	1.153.577	-162.858	-12,4%	-15,8%	-15,5%	2,2%
Chemical products	794.740	978.238	183.498	23,1%	26,1%	23,7%	1,9%
Oils and fats	683.106	699.604	16.498	2,4%	5,5%	-0,7%	1,3%
Natural/artificial fertilizer	45.177	45.089	-88	-0,2%	-4,8%	-4,8%	0,1%
Other food products	17.909	11.918	-5.991	-33,5%	-33,5%	-52,8%	0,0%
Remainder	38.361	6.972	-31.389	-81,8%	-89,9%	-85,6%	0,0%
Dry bulk	3.662.216	3.992.892	330.676	9,0%	11,8%	13,4%	7,7%
Special installation	3.299.347	3.739.041	439.694	13,3%	16,6%	18,6%	7,2%
Soya bean	1.179.177	1.243.754	64.577	5,5%	6,0%	7,9%	2,4%
Cement and clinker	628.347	846.263	217.916	34,7%	43,1%	40,6%	1,6%
Cereals and flours	520.978	766.816	245.839	47,2%	56,6%	69,9%	1,5%
Common salt	429.364	458.090	28.726	6,7%	10,8%	17,9%	0,9%
Potashes	504.105	403.940	-100.165	-19,9%	-20,2%	-22,3%	0,8%
Remainder	37.377	20.179	-17.199	-46,0%	-46,0%	-46,0%	0,0%
Without special installation	362.868	253.851	-109.018	-30,0%	-32,8%	-33,8%	0,5%
Scrap iron	204.189	162.249	-41.940	-20,5%	-19,5%	-16,7%	0,3%
Other non-metallic minerals	71.184	49.254	-21.929	-30,8%	-48,9%	-53,3%	0,1%
Chemical products	24.950	17.300	-7.650	-30,7%	-14,4%	-35,9%	0,0%
Other minerals and metallic waste	13.370	16.416	3.046	22,8%	-18,4%	-18,4%	0,0%
Common salt	15.530	8.606	-6.924	-44,6%	-31,3%	-53,2%	0,0%
Remainder	33.646	26	-33.620	-99,9%	-99,9%	-99,9%	0,0%
General cargo	41.952.975	37.303.092	-4.649.883	-11,1%	-12,0%	-12,1%	71,7%
Containerized	32.346.160	27.785.486	-4.560.675	-14,1%	-15,4%	-15,9%	53,4%
Tare of containers	6.178.396	5.555.808	-622.588	-10,1%	-11,0%	-11,4%	10,7%
Chemical products	4.675.323	4.109.257	-566.066	-12,1%	-14,0%	-14,2%	7,9%
Other food products	3.135.900	3.032.901	-102.999	-3,3%	-2,7%	-3,6%	5,8%
Other cargo by type	3.814.052	3.014.122	-799.930	-21,0%	-22,9%	-23,6%	5,8%
Paper and pulp	1.937.965	2.095.268	157.302	8,1%	5,0%	1,5%	4,0%
Remainder	12.604.523	9.978.129	-2.626.394	-20,8%	-21,9%	-22,0%	19,2%
Non-containerized	9.606.815	9.517.606	-89.209	-0,9%	-0,5%	0,8%	18,3%
Tare of platform and wagons (Ro-Ro)	3.792.718	3.679.050	-113.668	-3,0%	-3,4%	-0,1%	7,1%
Other cargo by type	1.590.122	1.531.371	-58.752	-3,7%	-3,4%	-4,1%	2,9%
Automobiles and parts	755.527	1.084.573	329.046	43,6%	50,9%	60,0%	2,1%
Machinery and spare parts	921.697	941.174	19.477	2,1%	2,9%	2,3%	1,8%
Other food products	457.986	464.156	6.170	1,3%	2,1%	3,2%	0,9%
Remainder	2.088.765	1.817.283	-271.482	-13,0%	-12,9%	-14,1%	3,5%

TRAFFIC INDICATORS

Breakdown of traffic in transit (tonnes)	Monthly accumulated				% 23-22 accum. September	% 23-22 accum. August	% of total accum. 2023
	2022	2023	Diff. 23-22	%			
Goods indicators by type of packaging (t)	21.709.354	16.813.236	-4.896.119	-22,6%	-25,0%	-26,8%	100%
Liquid bulk	4.933.532	3.422.453	-1.511.079	-30,6%	-35,6%	-38,0%	20,4%
Hydrocarbons	3.753.860	2.292.730	-1.461.130	-38,9%	-45,2%	-48,7%	13,6%
Petrol	2.013.186	1.007.640	-1.005.546	-49,9%	-57,9%	-60,9%	6,0%
Fuel oil	964.428	713.749	-250.679	-26,0%	-25,5%	-25,5%	4,2%
Diesel oils	629.833	521.770	-108.063	-17,2%	-20,2%	-25,0%	3,1%
Other petroleum products	146.413	49.571	-96.841	-66,1%	-87,7%		0,3%
Remainder	0	0	0				0,0%
Other liquid bulk	1.179.673	1.129.723	-49.949	-4,2%	-4,3%	-1,1%	6,7%
Biofuel	977.725	671.226	-306.499	-31,3%	-33,5%	-30,7%	4,0%
Chemical products	148.954	439.411	290.457	195,0%	201,3%	188,7%	2,6%
Oils and fats	18.149	19.087	938	5,2%	25,8%	78,0%	0,1%
Other cargo by type	26.259	0	-26.259				0,0%
Wines, beverages, spirits and derivatives	8.587	0	-8.587				0,0%
Remainder	0	0	0				0,0%
Dry bulk	6.300	9.425	3.125	49,6%	49,6%	1,3%	0,1%
Special installation	6.300	9.425	3.125	49,6%	49,6%	1,3%	0,1%
Potashes	0	9.425	9.425				0,1%
Cereals and flours	6.300	0	-6.300				0,0%
Remainder	0	0	0				0,0%
Without special installation	0	0	0				0,0%
Remainder	0	0	0				0,0%
General cargo	16.769.522	13.381.357	-3.388.165	-20,2%	-21,9%	-23,2%	79,6%
Containerized	16.368.430	13.019.640	-3.348.790	-20,5%	-22,2%	-23,5%	77,4%
Tare of containers	2.777.541	2.238.259	-539.282	-19,4%	-20,9%	-22,0%	13,3%
Other food products	1.862.642	1.961.794	99.152	5,3%	6,6%	4,8%	11,7%
Chemical products	1.990.532	1.535.889	-454.643	-22,8%	-24,8%	-25,0%	9,1%
Other cargo by type	1.940.672	1.322.260	-618.412	-31,9%	-34,4%	-36,2%	7,9%
Paper and pulp	782.899	844.477	61.578	7,9%	1,3%	-4,5%	5,0%
Remainder	7.014.145	5.116.962	-1.897.183	-27,0%	-28,4%	-29,3%	30,4%
Non-containerized	401.092	361.717	-39.375	-9,8%	-9,0%	-11,7%	2,2%
Automobiles and parts	108.729	152.809	44.079	40,5%	51,0%	61,4%	0,9%
Machinery and spare parts	57.144	56.771	-373	-0,7%	7,7%	8,4%	0,3%
Tare of platform and wagons (Ro-Ro)	71.907	48.439	-23.468	-32,6%	-34,5%	-38,2%	0,3%
Other cargo by type	57.391	47.130	-10.261	-17,9%	-18,9%	-22,1%	0,3%
Wines, beverages, spirits and derivatives	3.454	22.000	18.546	537,0%	442,4%	377,0%	0,1%
Remainder	102.467	34.568	-67.899	-66,3%	-67,4%	-71,0%	0,2%

TRAFFIC INDICATORS

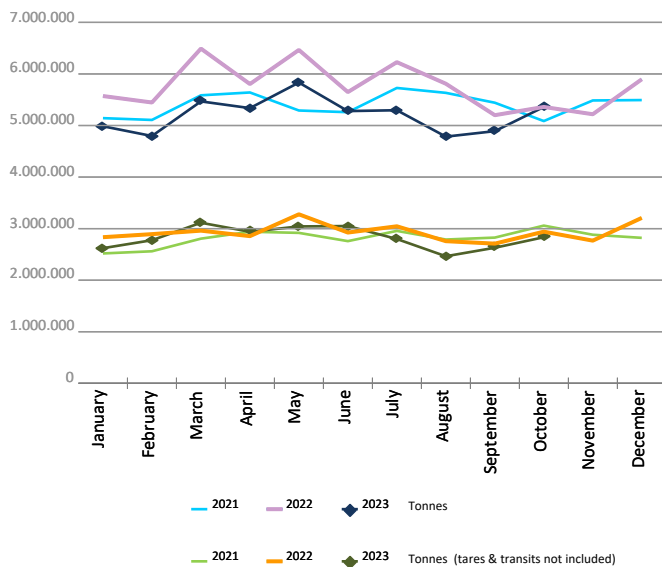
Monthly evolution of traffic. Tonnes

Monthly evolution of traffic	Total tonnes			%		Tonnes (tares & transits not included)			%	
	2022	2023	Diff. 23-22	Monthly	Accumulated	2022	2023	Diff. 23-22	Monthly	Accumulated
January	5.571.593	4.985.398	-586.195	-10,5%	-10,5%	2.833.810	2.620.828	-212.982	-7,5%	-7,5%
February	5.446.375	4.796.078	-650.297	-11,9%	-11,2%	2.893.004	2.775.465	-117.538	-4,1%	-5,8%
March	6.491.356	5.467.636	-1.023.720	-15,8%	-12,9%	2.960.820	3.114.298	153.478	5,2%	-2,0%
April	5.804.177	5.337.086	-467.091	-8,0%	-11,7%	2.854.316	2.939.421	85.105	3,0%	-0,8%
May	6.465.450	5.833.575	-631.875	-9,8%	-11,3%	3.278.034	3.042.658	-235.376	-7,2%	-2,2%
June	5.648.116	5.279.801	-368.315	-6,5%	-10,5%	2.923.660	3.049.919	126.259	4,3%	-1,1%
July	6.228.813	5.296.236	-932.577	-15,0%	-11,2%	3.045.360	2.798.797	-246.563	-8,1%	-2,2%
August	5.810.081	4.784.100	-1.025.981	-17,7%	-12,0%	2.756.439	2.464.520	-291.919	-10,6%	-3,1%
September	5.200.319	4.890.526	-309.793	-6,0%	-11,4%	2.708.810	2.628.855	-79.956	-3,0%	-3,1%
October	5.359.901	5.358.838	-1.063	-0,0%	-10,3%	2.940.906	2.833.118	-107.788	-3,7%	-3,2%
November	5.218.701					2.766.954				
December	5.896.467					3.208.040				
Total	69.141.349	52.029.273				35.170.153	28.267.880			

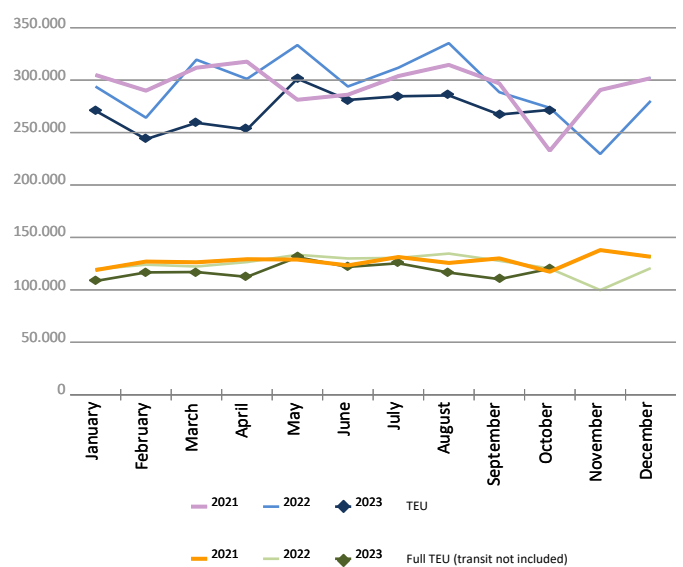
Monthly evolution of traffic. TEU

Monthly evolution of traffic	Total TEU			%		Full TEU (transit not included)			%	
	2022	2023	Diff. 23-22	Monthly	Accumulated	2022	2023	Diff. 23-22	Monthly	Accumulated
January	293.936	270.814	-23.122	-7,9%	-7,9%	119.697	108.430	-11.268	-9,4%	-9,4%
February	264.194	243.685	-20.509	-7,8%	-7,8%	124.031	116.640	-7.391	-6,0%	-7,7%
March	319.486	259.313	-60.173	-18,8%	-11,8%	122.283	117.007	-5.276	-4,3%	-6,5%
April	301.120	252.903	-48.217	-16,0%	-12,9%	126.513	112.395	-14.117	-11,2%	-7,7%
May	333.402	301.351	-32.051	-9,6%	-12,2%	133.419	131.137	-2.282	-1,7%	-6,4%
June	293.952	281.135	-12.817	-4,4%	-10,9%	129.933	121.905	-8.029	-6,2%	-6,4%
July	311.805	284.592	-27.213	-8,7%	-10,6%	130.457	125.354	-5.103	-3,9%	-6,0%
August	335.264	285.430	-49.834	-14,9%	-11,2%	134.615	116.474	-18.141	-13,5%	-7,0%
September	288.515	267.176	-21.339	-7,4%	-10,8%	127.747	110.242	-17.505	-13,7%	-7,8%
October	273.587	271.642	-1.945	-0,7%	-9,9%	120.390	120.126	-264	-0,2%	-7,0%
November	229.582					99.790				
December	280.201					120.698				
Total	3.525.041	2.718.041				1.489.571	1.179.708			

Goods (total tonnes)



Containers (total TEU)



CONTAINER TRAFFIC

TEU evolution

Full-unloaded foreign	Full TEU			%		Full-loaded foreign	Full TEU			%	
	2022	2023	Diff. 23-22	Monthly	Accumulated		2022	2023	Diff. 23-22	Monthly	Accumulated
January	48.476	49.138	662	1,4%	1,4%	January	64.009	51.046	-12.963	-20,3%	-20,3%
February	54.390	51.449	-2.941	-5,4%	-2,2%	February	61.530	56.052	-5.478	-8,9%	-14,7%
March	53.334	44.515	-8.819	-16,5%	-7,1%	March	61.139	60.777	-362	-0,6%	-10,1%
April	59.085	51.432	-7.653	-13,0%	-8,7%	April	58.086	51.390	-6.696	-11,5%	-10,4%
May	55.511	64.093	8.582	15,5%	-3,8%	May	70.010	56.512	-13.498	-19,3%	-12,4%
June	58.300	53.940	-4.361	-7,5%	-4,4%	June	63.144	57.195	-5.949	-9,4%	-11,9%
July	53.493	59.685	6.192	11,6%	-2,2%	July	67.435	54.829	-12.607	-18,7%	-12,9%
August	59.663	56.639	-3.024	-5,1%	-2,6%	August	66.589	50.132	-16.457	-24,7%	-14,5%
September	56.698	48.419	-8.279	-14,6%	-3,9%	September	61.784	50.821	-10.963	-17,7%	-14,8%
October	47.022	52.491	5.470	11,6%	-2,6%	October	64.583	57.814	-6.769	-10,5%	-14,4%
November	36.823					November	54.098				
December	49.571					December	62.276				
Total	632.363	531.798				Total	754.680	546.565			

Full-unloaded domestic	Full TEU			%		Full-loaded domestic	Full TEU			%	
	2022	2023	Diff. 23-22	Monthly	Accumulated		2022	2023	Diff. 23-22	Monthly	Accumulated
January	1.733	1.702	-32	-1,8%	-1,8%	January	5.480	6.545	1.065	19,4%	19,4%
February	1.764	1.836	72	4,1%	1,2%	February	6.348	7.304	956	15,1%	17,1%
March	1.699	2.227	529	31,1%	10,9%	March	6.112	9.488	3.377	55,3%	30,1%
April	1.593	1.818	225	14,1%	11,7%	April	7.750	7.756	6	0,1%	21,0%
May	1.382	2.223	841	60,8%	20,0%	May	6.516	8.310	1.795	27,5%	22,4%
June	1.627	1.938	311	19,1%	19,9%	June	6.863	8.833	1.971	28,7%	23,5%
July	1.523	1.881	358	23,5%	20,3%	July	8.006	8.960	954	11,9%	21,5%
August	1.642	1.989	348	21,2%	20,4%	August	6.722	7.715	993	14,8%	20,7%
September	1.890	2.163	273	14,4%	19,7%	September	7.376	8.839	1.463	19,8%	20,6%
October	1.507	2.164	657	43,6%	21,9%	October	7.279	7.658	379	5,2%	18,9%
November	1.772					November	7.097				
December	1.773					December	7.078				
Total	19.903	19.939				Total	82.625	81.407			

Full - Transit	Full TEU			%		Empty	Empty TEU			%	
	2022	2023	Diff. 23-22	Monthly	Accumulated		2022	2023	Diff. 23-22	Monthly	Accumulated
January	105.236	97.136	-8.100	-7,7%	-7,7%	January	69.003	65.249	-3.754	-5,4%	-5,4%
February	89.159	71.919	-17.240	-19,3%	-13,0%	February	51.004	55.126	4.123	8,1%	0,3%
March	136.336	83.590	-52.746	-38,7%	-23,6%	March	60.868	58.717	-2.151	-3,5%	-1,0%
April	129.299	83.957	-45.342	-35,1%	-26,8%	April	45.309	56.551	11.243	24,8%	4,2%
May	136.713	97.479	-39.234	-28,7%	-27,3%	May	63.271	72.735	9.465	15,0%	6,5%
June	108.465	84.533	-23.932	-22,1%	-26,5%	June	55.554	74.698	19.144	34,5%	11,0%
July	124.034	93.104	-30.930	-24,9%	-26,2%	July	57.315	66.135	8.820	15,4%	11,7%
August	131.163	83.800	-47.363	-36,1%	-27,6%	August	69.487	85.156	15.670	22,6%	13,3%
September	100.326	86.281	-14.045	-14,0%	-26,3%	September	60.442	70.654	10.212	16,9%	13,7%
October	93.355	90.686	-2.669	-2,9%	-24,4%	October	59.843	60.830	988	1,7%	12,5%
November	79.302					November	50.490				
December	86.856					December	72.648				
Total	1.320.240	872.483				Total	715.230	665.850			

CONTAINER TRAFFIC

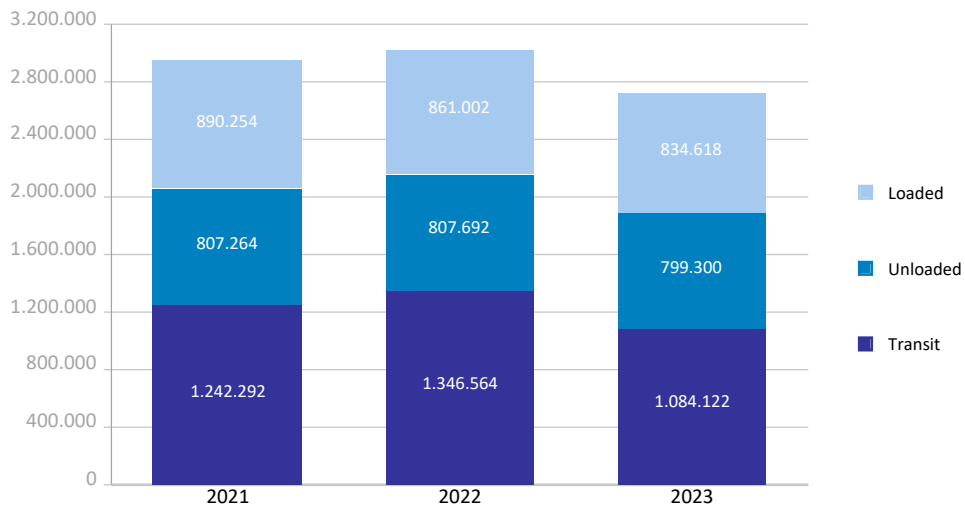
TEU

Container traffic	Monthly accumulated 2022			Monthly accumulated 2023			%
	Domestic	Foreign	Total	Domestic	Foreign	Total	
Total traffic	161.990	2.853.268	3.015.258	187.276	2.530.765	2.718.041	-9,9%
Unloaded	82.031	1.424.020	1.506.050	97.749	1.265.875	1.363.624	-9,5%
Roll On-Roll Off	22.404	12.443	34.847	22.943	12.383	35.326	1,4%
Lift On-Lift Off	59.627	1.411.577	1.471.204	74.807	1.253.492	1.328.298	-9,7%
Loaded	79.960	1.429.249	1.509.208	89.526	1.264.891	1.354.417	-10,3%
Roll On-Roll Off	22.793	12.451	35.244	25.130	12.271	37.401	6,1%
Lift On-Lift Off	57.167	1.416.798	1.473.964	64.397	1.252.620	1.317.016	-10,6%

Breakdown by navigation and operation	Monthly accumulated 2022			Monthly accumulated 2023			%
	Domestic	Foreign	Total	Domestic	Foreign	Total	
Loaded	79.802	781.199	861.002	89.403	745.215	834.618	-3,1%
Full	68.450	638.306	706.756	81.407	546.565	627.972	-11,1%
Empty	11.353	142.894	154.246	7.996	198.650	206.646	34,0%
Unloaded	80.315	727.377	807.692	94.546	704.754	799.300	-1,0%
Full	16.358	545.969	562.327	19.939	531.798	551.736	-1,9%
Empty	63.957	181.408	245.365	74.608	172.957	247.564	0,9%
Transit	1.873	1.344.692	1.346.564	3.326	1.080.796	1.084.122	-19,5%
Full	84	1.153.998	1.154.082	40	872.443	872.483	-24,4%
Empty	1.789	190.694	192.482	3.286	208.354	211.640	10,0%

Total traffic	161.990	2.853.268	3.015.258	187.276	2.530.765	2.718.041	-9,9%
Full	84.892	2.338.273	2.423.165	101.386	1.950.805	2.052.191	-15,3%
Empty	77.098	514.995	592.093	85.890	579.960	665.850	12,5%
% Empty	47,6%	18,0%	19,6%	45,9%	22,9%	24,5%	
% Transit	1,2%	47,1%	44,7%	1,8%	42,7%	39,9%	

General cargo distribution by operation (TEU)

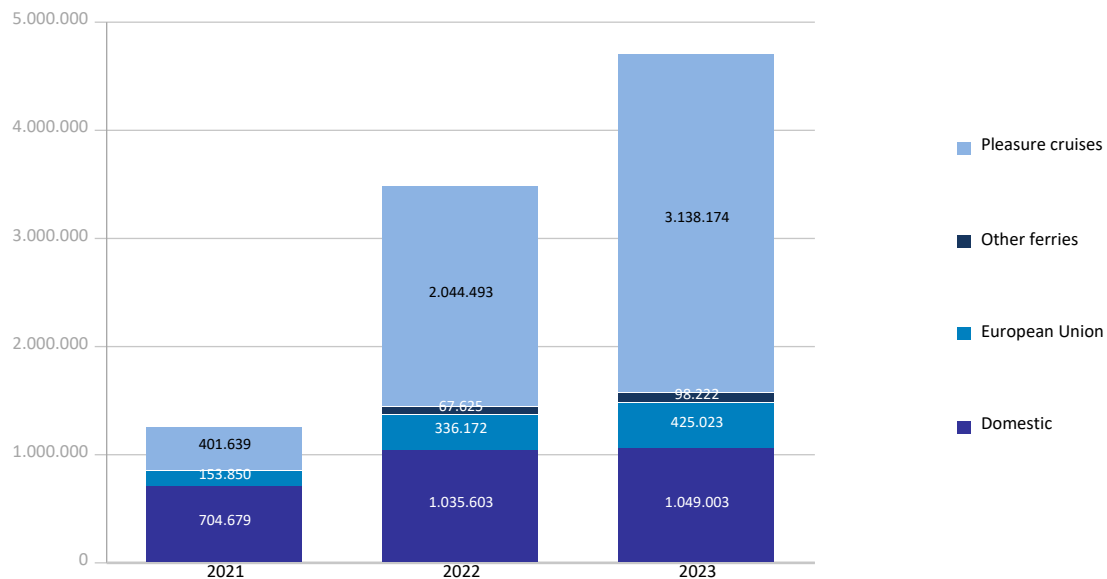


PASSENGER TRAFFIC

Total passenger traffic (units)	Monthly accumulated				% 23-22 accum. September	% 23-22 accum. August
	2022	2023	Diff. 23-22	%		
Total passengers	3.483.893	4.710.422	1.226.529	35,2%	37,1%	40,4%
Embarkation	1.342.415	1.661.185	318.770	23,7%	24,3%	26,8%
Disembarkation	1.284.289	1.614.421	330.132	25,7%	26,7%	29,6%
Transit	857.189	1.434.816	577.627	67,4%	76,1%	82,4%
Regular line ferries	1.439.400	1.572.248	132.848	9,2%	9,0%	9,0%
Embarkation	743.151	804.360	61.209	8,2%	7,9%	8,1%
Disembarkation	696.249	767.888	71.639	10,3%	10,3%	9,9%
Domestic	1.035.603	1.049.003	13.400	1,3%	0,3%	-0,1%
Embarkation	538.200	544.401	6.201	1,2%	0,2%	-0,1%
Disembarkation	497.403	504.602	7.199	1,4%	0,4%	-0,1%
European Union	336.172	425.023	88.851	26,4%	28,2%	29,8%
Embarkation	168.401	210.380	41.979	24,9%	26,1%	28,6%
Disembarkation	167.771	214.643	46.872	27,9%	30,4%	31,1%
Other ferries	67.625	98.222	30.597	45,2%	49,0%	49,1%
Embarkation	36.550	49.579	13.029	35,6%	38,6%	38,6%
Disembarkation	31.075	48.643	17.568	56,5%	61,3%	64,5%
Pleasure cruises	2.044.493	3.138.174	1.093.681	53,5%	59,7%	68,3%
Embarkation	599.264	856.825	257.561	43,0%	47,5%	56,8%
Disembarkation	588.040	846.533	258.493	44,0%	48,7%	58,9%
Transit	857.189	1.434.816	577.627	67,4%	76,1%	82,4%

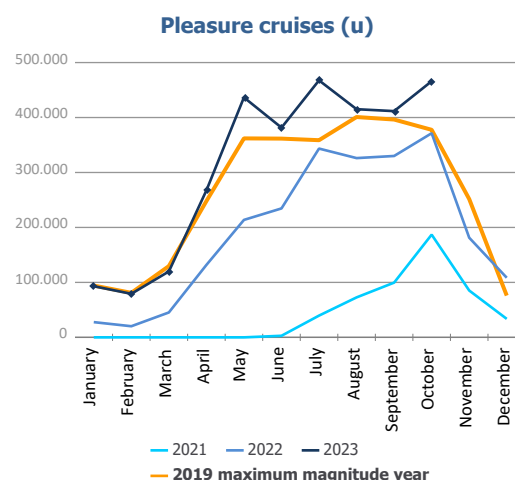
Total passenger calls (units)	Monthly accumulated				% 23-22 accum. September	% 23-22 accum. August
	2022	2023	Diff. 23-22	%		
Total number of calls	3.425	3.482	57	1,7%	1,6%	2,0%
Regular Line ferries	2.724	2.787	63	2,3%	1,7%	2,1%
Pleasure cruises	701	695	-6	-0,9%	1,2%	1,6%

Passenger traffic distribution (u)

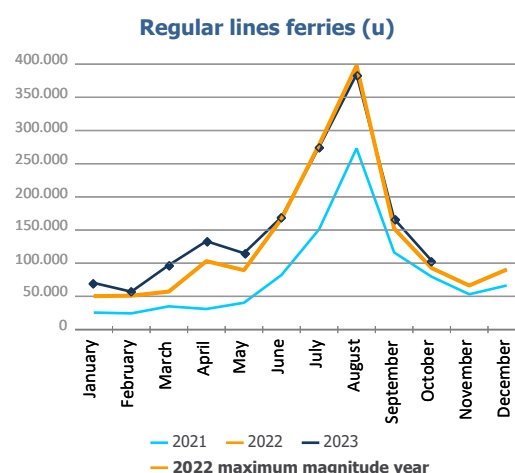


PASSENGER CLASSIFICATION

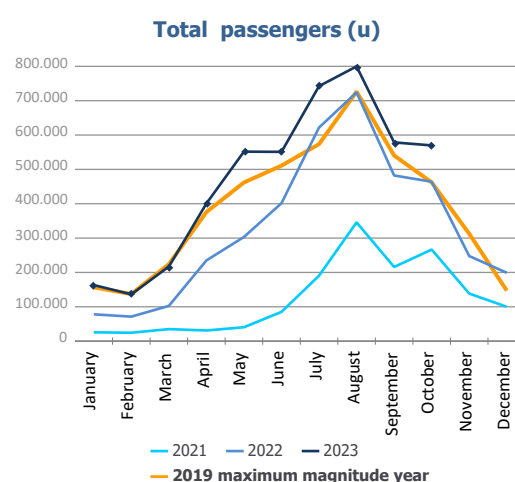
Monthly evolution of passenger traffic	Pleasure cruises			%	
	2022	2023	Diff. 23-22	Monthly	Accumulated
January	27.707	93.013	65.306	235,7%	235,7%
February	20.234	79.194	58.960	291,4%	259,2%
March	45.304	119.885	74.581	164,6%	213,3%
April	131.770	267.420	135.650	102,9%	148,7%
May	213.711	436.569	222.858	104,3%	127,0%
June	234.617	381.587	146.970	62,6%	104,6%
July	343.517	467.607	124.090	36,1%	81,5%
August	326.187	415.154	88.967	27,3%	68,3%
September	330.034	411.670	81.636	24,7%	59,7%
October	371.412	466.075	94.663	25,5%	53,5%
November	181.318				
December	108.494				
Total	2.334.305	3.138.174			



Monthly evolution of passenger traffic	Regular lines ferries			%	
	2022	2023	Diff. 23-22	Monthly	Accumulated
January	50.352	70.262	19.910	39,5%	39,5%
February	51.078	57.059	5.981	11,7%	25,5%
March	57.261	97.166	39.905	69,7%	41,5%
April	103.159	133.201	30.042	29,1%	36,6%
May	89.473	115.112	25.639	28,7%	34,6%
June	166.930	169.419	2.489	1,5%	23,9%
July	278.213	274.776	-3.437	-1,2%	15,1%
August	397.960	384.652	-13.308	-3,3%	9,0%
September	152.317	166.887	14.570	9,6%	9,0%
October	92.657	103.714	11.057	11,9%	9,2%
November	66.384				
December	90.483				
Total	1.596.267	1.572.248			



Monthly evolution of passenger traffic	Total passengers			%	
	2022	2023	Diff. 23-22	Monthly	Accumulated
January	78.059	163.275	85.216	109,2%	109,2%
February	71.312	136.253	64.941	91,1%	100,5%
March	102.565	217.051	114.486	111,6%	105,0%
April	234.929	400.621	165.692	70,5%	88,4%
May	303.184	551.681	248.497	82,0%	85,9%
June	401.547	551.006	149.459	37,2%	69,5%
July	621.730	742.383	120.653	19,4%	52,3%
August	724.147	799.806	75.659	10,4%	40,4%
September	482.351	578.557	96.206	19,9%	37,1%
October	464.069	569.789	105.720	22,8%	35,2%
November	247.702				
December	198.977				
Total	3.930.572	4.710.422			

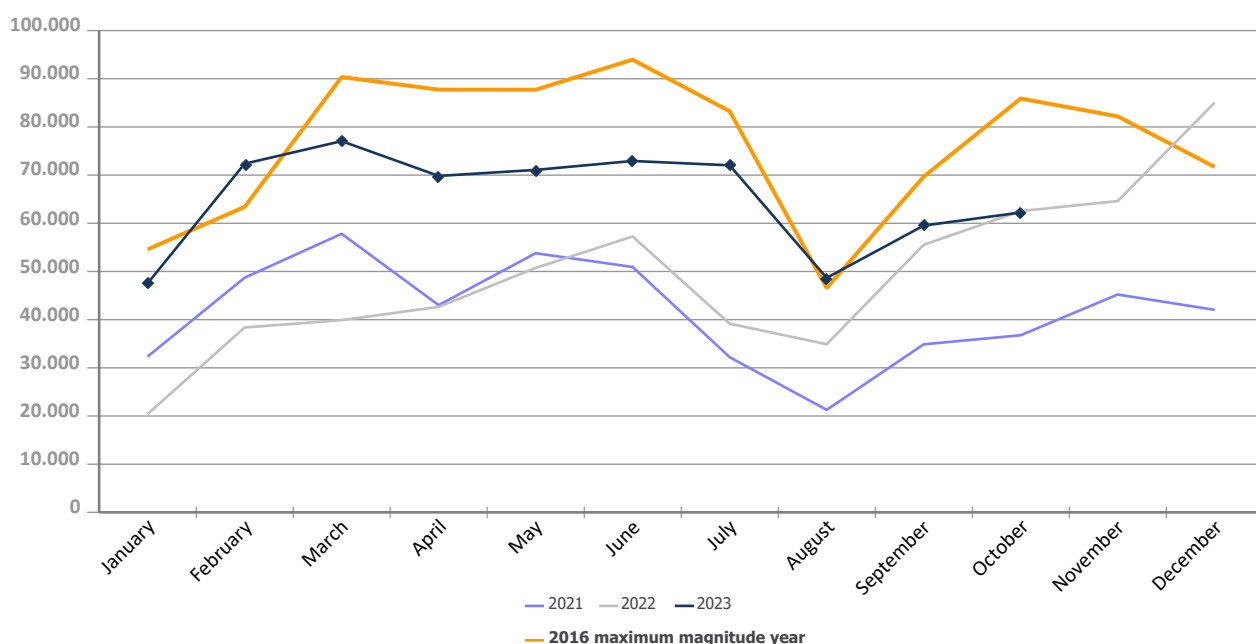


AUTOMOBILE TRAFFIC

Total automobile traffic (units)	Monthly accumulated				% 23-22 accum. September	% 23-22 accum. August
	2022	2023	Diff. 23-22	%		
Automobile traffic by navigation and operation	441.478	653.285	211.807	48,0%	56,0%	64,4%
Domestic	71.467	90.717	19.250	26,9%	29,4%	36,2%
Loaded	59.653	76.969	17.316	29,0%	30,2%	35,4%
Unloaded	11.812	13.727	1.915	16,2%	22,9%	43,8%
Transit	2	21	19	950,0%	950,0%	950,0%
Foreign	370.011	562.568	192.557	52,0%	61,3%	70,1%
Loaded	195.147	268.929	73.782	37,8%	39,7%	40,1%
Unloaded	111.687	198.862	87.175	78,1%	99,7%	130,6%
Transit	63.177	94.777	31.600	50,0%	66,7%	77,3%

Monthly automobile traffic (u)	Monthly		Accumulated		%	
	2022	2023	2022	2023	Monthly	Accumulated
January	20.402	47.534	20.402	47.534	133,0%	133,0%
February	38.375	72.364	58.777	119.898	88,6%	104,0%
March	39.904	77.057	98.681	196.955	93,1%	99,6%
April	42.653	69.834	141.334	266.789	63,7%	88,8%
May	50.736	71.083	192.070	337.872	40,1%	75,9%
June	57.266	72.935	249.336	410.807	27,4%	64,8%
July	39.159	72.037	288.495	482.844	84,0%	67,4%
August	34.906	48.671	323.401	531.515	39,4%	64,4%
September	55.534	59.527	378.935	591.042	7,2%	56,0%
October	62.543	62.243	441.478	653.285	-0,5%	48,0%
November	64.615		506.093			
December	85.065		591.158			

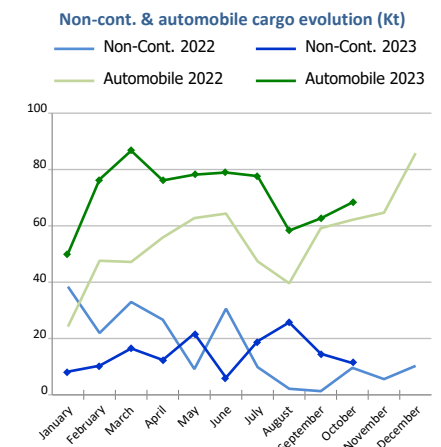
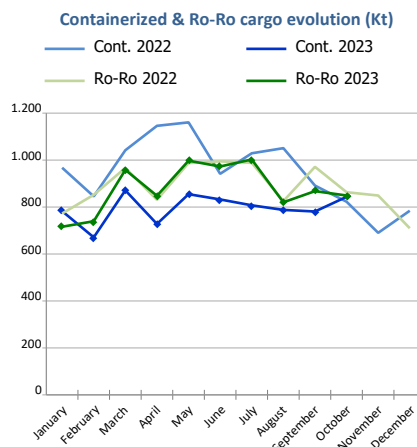
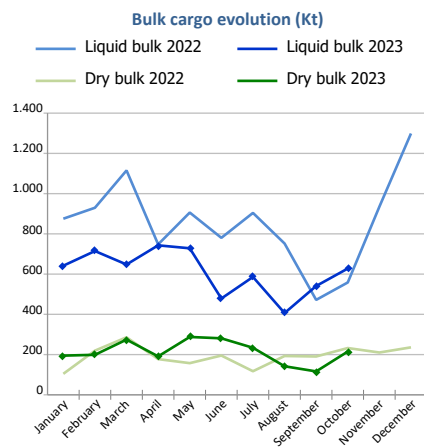
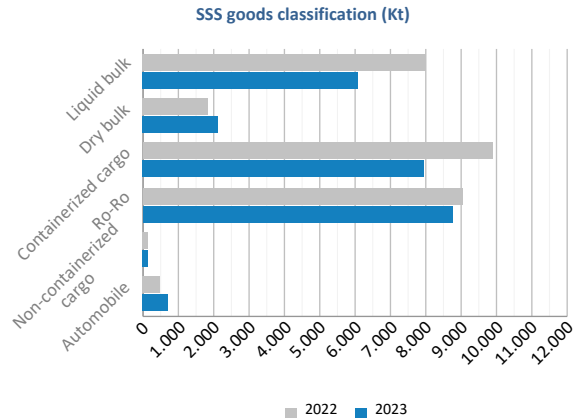
Evolution of monthly automobile traffic (u)



SHORT SEA SHIPPING (SSS)

SSS Goods classification

Goods classification. Tonnes	Monthly accumulated		%	% of total port traffic
	2022	2023		
Liquid bulk	8.040.629	6.114.672	-24,0%	57,0%
Dry bulk	1.873.043	2.134.420	14,0%	53,5%
Containerized cargo	9.898.017	7.960.366	-19,6%	29,3%
Ro-Ro	9.053.403	8.773.091	-3,1%	99,5%
Non-containerized cargo	182.599	145.911	-20,1%	48,8%
Automobile	510.311	713.518	39,8%	71,5%
Total	29.558.003	25.841.977	-12,6%	49,7%



SSS General Cargo	Spanish Islands			SSS Remainder			TOTAL		
	2022	2023	%	2022	2023	%	2022	2023	%
Containerized cargo	620.924	753.900	21,4%	9.277.092	7.206.465	-22,3%	9.898.017	7.960.366	-19,6%
O/D	604.527	734.151	21,4%	2.736.248	2.687.183	-1,8%	3.340.775	3.421.334	2,4%
Transit	16.397	19.749	20,4%	6.540.844	4.519.282	-30,9%	6.557.242	4.539.031	-30,8%
Ro-Ro	4.971.088	5.019.817	1,0%	4.082.315	3.753.274	-8,1%	9.053.403	8.773.091	-3,1%
O/D	4.971.070	5.019.817	1,0%	3.781.863	3.547.518	-6,2%	8.752.933	8.567.335	-2,1%
Transit	18	0		300.452	205.756	-31,5%	300.471	205.756	-31,5%
Non-cont. cargo	5.379	2.575	-52,1%	177.220	143.336	-19,1%	182.599	145.911	-20,1%
O/D	5.361	2.575	-52,0%	171.621	138.977	-19,0%	176.982	141.552	-20,0%
Transit	18	0	-99,8%	5.599	4.359	-22,1%	5.617	4.359	-22,4%
Automobile	104.303	139.900	34,1%	406.008	573.617	41,3%	510.311	713.518	39,8%
O/D	103.965	139.626	34,3%	341.909	470.141	37,5%	445.874	609.767	36,8%
Transit	337	274	-18,7%	64.100	103.477	61,4%	64.437	103.751	61,0%



Short Sea Shipping (SSS):

The transport of cargo/goods and passengers between ports situated in the European Union or between these ports and non-European ports with a coastline in seas bordering Europe. This applies to cargo either originating from or is destined for these countries (in accordance with the European Shortsea Network).

Motorways of the sea (MoS):

Short Sea Shipping services as an alternative to road transport and which fulfill the following criteria: minimum frequency of 3 calls per week and calling at a maximum of 3 different ports.

General cargo:

Including containerized cargo, non-containerized cargo, Ro-Ro and automobiles.

Containerized cargo:

Excluding container cargo by Ro-Ro.

Non-containerized cargo:

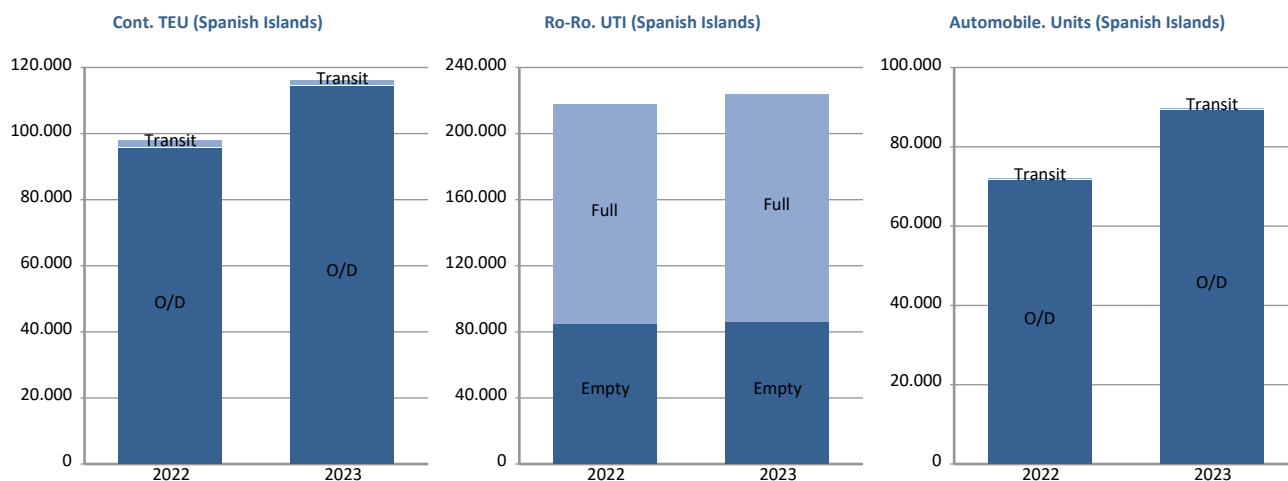
General non-containerized goods other than Ro-Ro and excluding automobiles.

Ro-Ro:

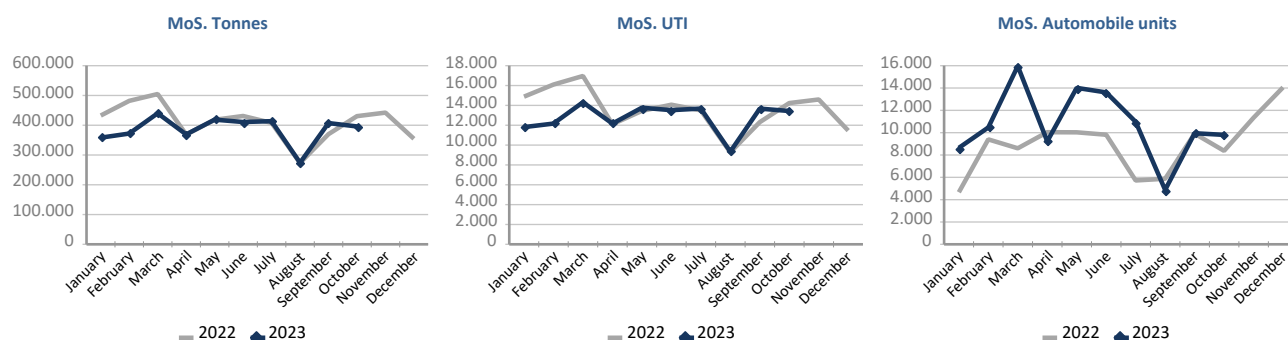
General cargo carried in UTI's. Excluding automobiles.

SHORT SEA SHIPPING (SSS)

SSS General cargo	Spanish Islands			SSS Remainder			TOTAL		
	2022	2023	%	2022	2023	%	2022	2023	%
Containerized cargo. TEU	97.863	116.340	18,9%	839.578	688.354	-18,0%	937.441	804.694	-14,2%
O/D	95.408	114.452	20,0%	313.760	326.455	4,0%	409.168	440.907	7,8%
Full	58.220	70.977	21,9%	189.371	191.540	1,1%	247.591	262.517	6,0%
Empty	37.188	43.475	16,9%	124.389	134.915	8,5%	161.577	178.390	10,4%
Transit	2.456	1.889	-23,1%	525.818	361.899	-31,2%	528.273	363.788	-31,1%
Full	1.189	1.657	39,3%	482.321	327.839	-32,0%	483.510	329.496	-31,9%
Empty	1.267	232	-81,7%	43.497	34.060	-21,7%	44.764	34.292	-23,4%
Ro-Ro. UTI	217.835	224.028	2,8%	139.128	129.545	-6,9%	356.963	353.573	-0,9%
Full	133.447	138.656	3,9%	128.420	118.237	-7,9%	261.867	256.893	-1,9%
Empty	84.388	85.372	1,2%	10.708	11.308	5,6%	95.096	96.680	1,7%
Automobile units	71.710	89.616	25,0%	280.366	395.146	40,9%	352.076	484.762	37,7%
O/D	71.469	89.419	25,1%	235.216	327.236	39,1%	306.685	416.655	35,9%
Transit	241	197	-18,3%	45.150	67.910	50,4%	45.391	68.107	50,0%



Motorways of the Sea (MoS)	EU			Non-EU			TOTAL		
	2022	2023	%	2022	2023	%	2022	2023	%
Tonnes	4.072.967	3.844.318	-5,6%	46.336	15.633	-66,3%	4.119.304	3.859.951	-6,3%
Loaded	2.162.434	2.050.787	-5,2%	21.172	10.435	-50,7%	2.183.606	2.061.223	-5,6%
Unloaded	1.910.533	1.793.530	-6,1%	25.164	5.197	-79,3%	1.935.698	1.798.728	-7,1%
UTI	134.159	127.109	-5,3%	2.708	770	-71,6%	136.867	127.879	-6,6%
Loaded	69.032	65.366	-5,3%	1.415	526	-62,8%	70.447	65.892	-6,5%
Unloaded	65.127	61.743	-5,2%	1.293	244	-81,1%	66.420	61.987	-6,7%
Automobile units	81.800	106.210	29,8%	636	1.301	104,6%	82.436	107.511	30,4%
Loaded	78.281	99.453	27,0%	85	1.296	1424,7%	78.366	100.749	28,6%
Unloaded	3.519	6.757	92,0%	551	5	-99,1%	4.070	6.762	66,1%

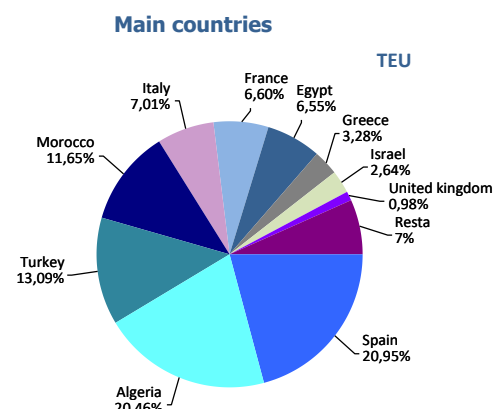


UTI: All those means of unitization, self-propelled or otherwise, that are directly or indirectly used as a means of land transport (e.g. trailers, platforms, trucks, freezer trucks, etc.) are considered as UTI. Containers are not considered to be included, except those that are handled by an equipment transport of the own terminal.

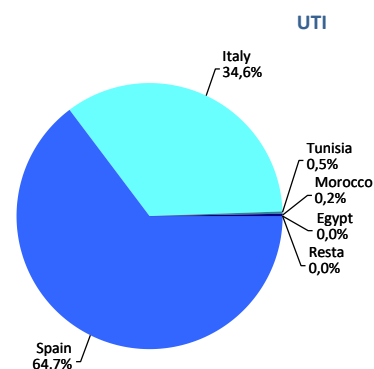
SHORT SEA SHIPPING (SSS)

SSS Ranking countries by mode of packaging

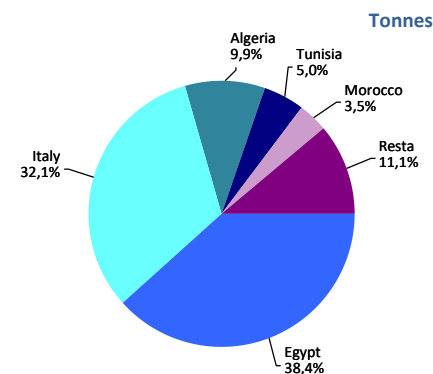
Containerized cargo. TEU	Monthly accumulated				% of total 2023
	2022	2023	Diff. 23-22	%	
Total	937.441	804.694	-132.747	-14,2%	100%
Spain	144.634	168.581	23.947	16,6%	20,9%
Algeria	167.117	164.650	-2.467	-1,5%	20,5%
Turkey	138.405	105.312	-33.093	-23,9%	13,1%
Morocco	76.873	93.749	16.876	22,0%	11,7%
Italy	147.213	56.396	-90.818	-61,7%	7,0%
France	84.895	53.132	-31.763	-37,4%	6,6%
Egypt	45.934	52.678	6.744	14,7%	6,5%
Greece	28.960	26.364	-2.597	-9,0%	3,3%
Israel	17.672	21.278	3.606	20,4%	2,6%
United kingdom	13.011	7.923	-5.089	-39,1%	1,0%
Remainder	72.729	54.634	-18.095	-24,9%	6,8%



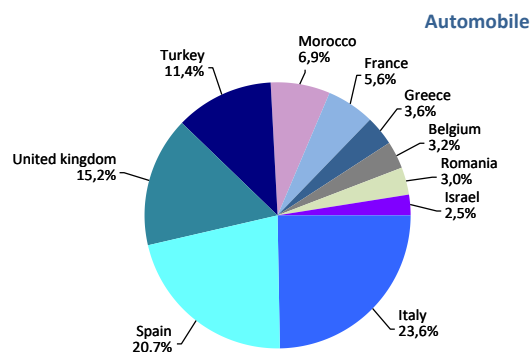
Ro-Ro. UTI	Monthly accumulated				% of total 2023
	2022	2023	Diff. 23-22	%	
Total	356.963	353.573	-3.391	-0,9%	100%
Spain	224.175	228.708	4.533	2,0%	64,7%
Italy	127.810	122.408	-5.402	-4,2%	34,6%
Tunisia	2.049	1.614	-436	-21,3%	0,5%
Morocco	2.912	829	-2.083	-71,5%	0,2%
Egypt	12	13	1	8,3%	0,0%
Remainder	5	1	-4	-80,0%	0,0%



Non-cont. cargo. Tonnes	Monthly accumulated				% of total 2023
	2022	2023	Diff. 23-22	%	
Total	182.599	145.911	-36.688	-20,1%	100%
Egypt	25.134	55.994	30.859	122,8%	38,4%
Italy	39.983	46.858	6.874	17,2%	32,1%
Algeria	5.137	14.394	9.257	180,2%	9,9%
Tunisia	19.323	7.367	-11.956	-61,9%	5,0%
Morocco	3.169	5.127	1.958	61,8%	3,5%
Remainder	89.852	16.171	-73.681	-82,0%	11,1%



Automobile. Units	Monthly accumulated				% of total 2023
	2022	2023	Diff. 23-22	%	
Total	352.076	484.762	132.686	37,7%	100%
Italy	84.625	114.579	29.954	35,4%	23,6%
Spain	79.971	100.372	20.401	25,5%	20,7%
United kingdom	53.295	73.607	20.312	38,1%	15,2%
Turkey	31.697	55.365	23.668	74,7%	11,4%
Morocco	27.186	33.335	6.149	22,6%	6,9%
France	17.473	27.308	9.835	56,3%	5,6%
Greece	9.027	17.662	8.635	95,7%	3,6%
Belgium	3.021	15.458	12.437	411,7%	3,2%
Romania	14.292	14.507	215	1,5%	3,0%
Israel	8.145	12.088	3.943	48,4%	2,5%
Remainder	23.344	20.481	-2.863	-12,3%	4,2%



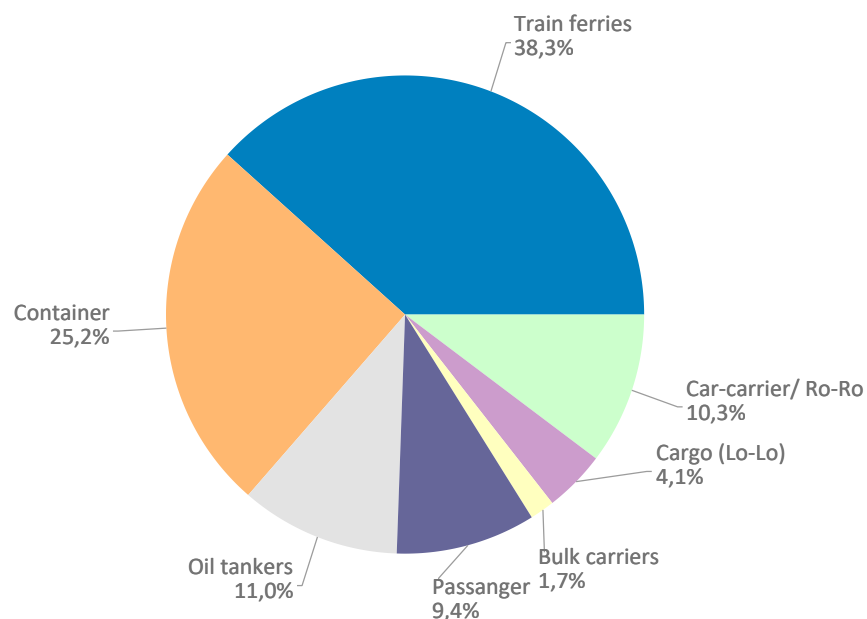
VESSELS TRAFFIC

Vessels traffic	Monthly accumulated		
	2022	2023	%
Number of calls	7.290	7.406	1,6%
Tonnage	294.708.182	317.253.657	7,7%
Average tonnes	40.426	42.837	6,0%

Type of vessels	Monthly accumulated					
	2022		2023		%	
	Calls	GT	Calls	GT	Calls	GT
Total	7.290	294.708.182	7.406	317.253.657	1,6%	7,7%
Car-carrier/ Ro-Ro	775	38.780.364	760	40.332.994	-1,9%	4,0%
Cargo (Lo-Lo)	250	1.462.637	304	1.837.933	21,6%	25,7%
Refrigerators	1	14.868	0	0		
Bulk carriers	127	3.240.859	126	3.576.944	-0,8%	10,4%
Passanger	702	79.431.833	695	86.145.774	-1,0%	8,5%
Oil tankers	996	18.767.962	818	16.075.739	-17,9%	-14,3%
Container	1.741	73.634.645	1.866	84.870.442	7,2%	15,3%
Train ferries	2.698	79.375.014	2.837	84.413.831	5,2%	6,3%

Type of vessels (monthly accumulated 2023)	Domestic		Foreign	
	Calls	GT	Calls	GT
Total	2.648	65.077.177	4.758	252.176.480
Car-carrier/ Ro-Ro	48	1.032.522	712	39.300.472
Cargo (Lo-Lo)	22	62.129	282	1.775.804
Refrigerators			0	0
Bulk carriers	7	105.184	119	3.471.760
Passanger	101	6.826.472	594	79.319.302
Oil tankers	54	608.788	764	15.466.951
Container	249	2.280.853	1.617	82.589.589
Train ferries	2.167	54.161.229	670	30.252.602

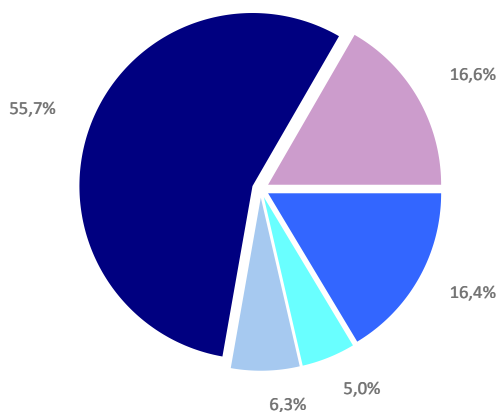
Distribution by type of vessel



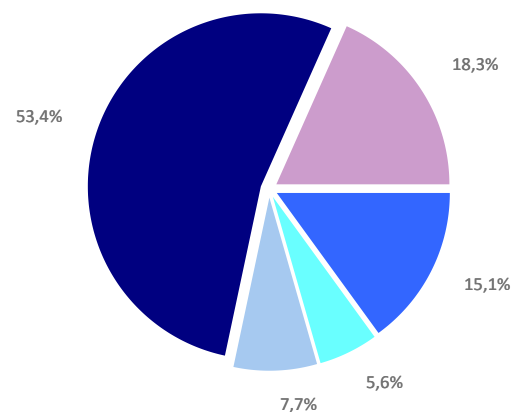
GOODS TRAFFIC

Type of packaging and navigation	Monthly accumulated 2022			Monthly accumulated 2023			%
	Domestic	Foreign	Total	Domestic	Foreign	Total	
Hydrocarbons	830.652	8.684.610	9.515.261	622.966	7.214.925	7.837.891	-17,6%
Incoming	763.495	6.908.560	7.672.055	471.272	6.059.150	6.530.422	-14,9%
Outgoing	67.157	1.776.049	1.843.206	151.695	1.155.775	1.307.470	-29,1%
Other liquid bulk	218.515	2.677.213	2.895.728	131.307	2.764.091	2.895.398	-0,0%
Incoming	135.300	1.854.632	1.989.932	77.090	1.815.424	1.892.514	-4,9%
Outgoing	83.216	822.581	905.797	54.217	948.667	1.002.884	10,7%
Dry bulk	172.480	3.489.735	3.662.216	113.158	3.879.734	3.992.892	9,0%
Incoming	87.787	1.869.920	1.957.707	91.010	2.155.324	2.246.334	14,7%
Outgoing	84.693	1.619.816	1.704.509	22.148	1.724.410	1.746.558	2,5%
Containerized cargo	1.002.751	31.343.409	32.346.160	1.179.709	26.605.776	27.785.486	-14,1%
Incoming	293.779	14.521.549	14.815.328	350.972	12.773.745	13.124.716	-11,4%
Outgoing	708.972	16.821.860	17.530.832	828.738	13.832.032	14.660.769	-16,4%
Non-containerized cargo	4.749.535	4.857.280	9.606.815	4.810.442	4.707.164	9.517.606	-0,9%
Incoming	1.628.333	2.500.140	4.128.472	1.577.457	2.375.812	3.953.269	-4,2%
Outgoing	3.121.202	2.357.140	5.478.342	3.232.985	2.331.351	5.564.337	1,6%
Total general cargo	5.752.286	36.200.689	41.952.975	5.990.152	31.312.940	37.303.092	-11,1%
Incoming	1.922.112	17.021.689	18.943.801	1.928.428	15.149.557	17.077.986	-9,8%
Outgoing	3.830.174	19.179.001	23.009.174	4.061.723	16.163.383	20.225.106	-12,1%
Total throughput (tonnes)	6.973.933	51.052.248	58.026.180	6.857.583	45.171.690	52.029.273	-10,3%
Incoming	2.908.694	27.654.801	30.563.494	2.567.800	25.179.455	27.747.255	-9,2%
Outgoing	4.065.239	23.397.447	27.462.686	4.289.783	19.992.234	24.282.017	-11,6%
Container traffic (TEU)	161.990	2.853.268	3.015.258	187.276	2.530.765	2.718.041	-9,9%
Incoming	82.031	1.424.020	1.506.050	97.749	1.265.875	1.363.624	-9,5%
Outgoing	79.960	1.429.249	1.509.208	89.526	1.264.891	1.354.417	-10,3%

Distribution by type of packaging 2022

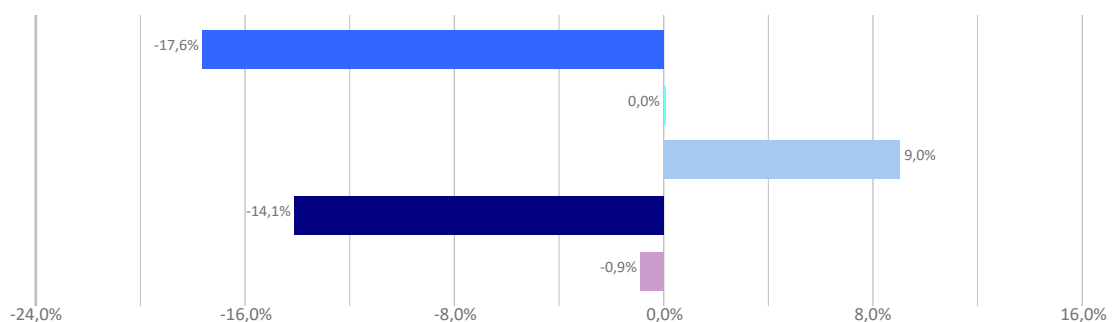


Distribution by type of packaging 2023



Hydrocarbons Liquid bulk Dry bulk Containerized cargo Non Containerized cargo

Annual growth by type of packaging



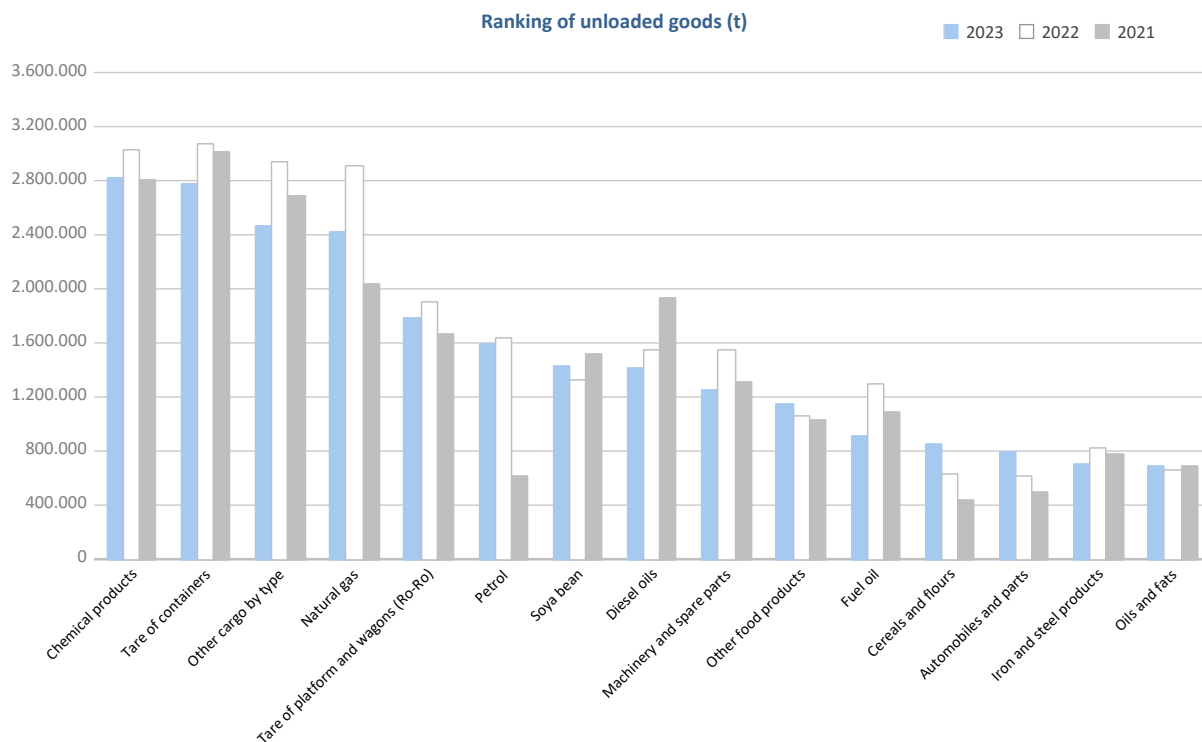
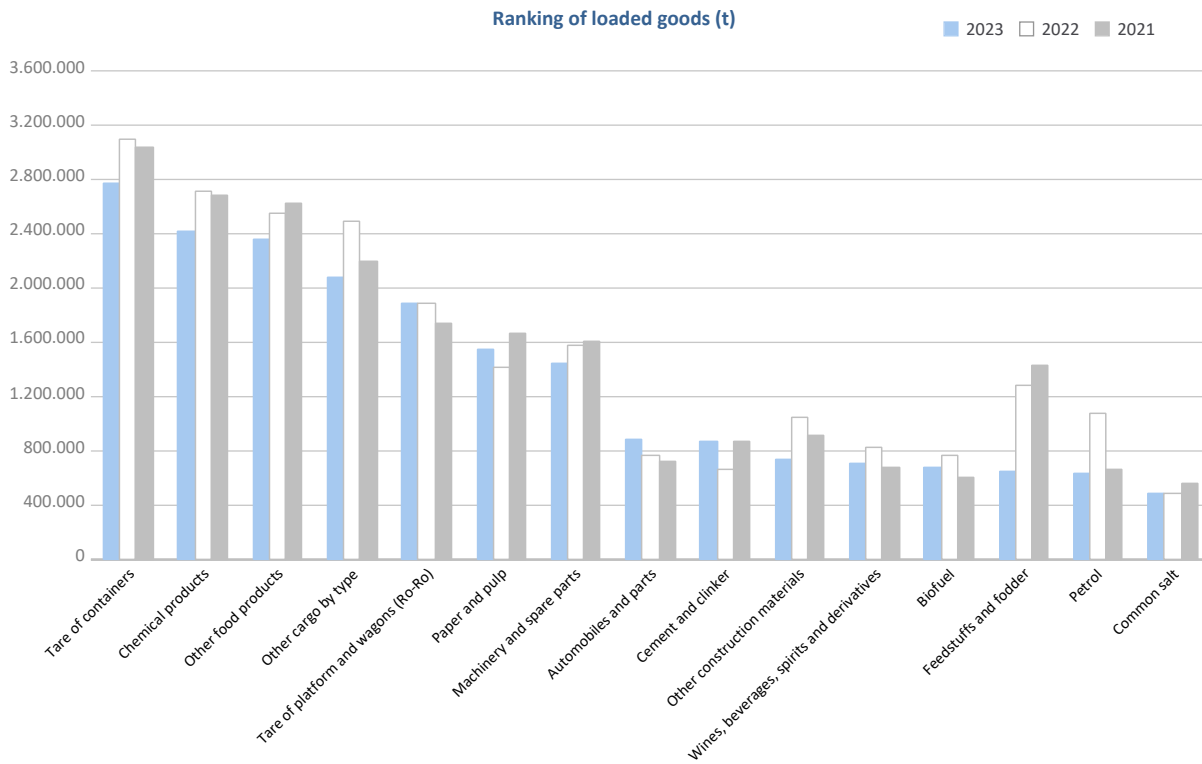
GOODS TRAFFIC

Goods by classification 4.3.7.	Monthly accumulated				% of total accum. 2023
	2022	2023	Diff. 23-22	%	
Tonnes	58.026.180	52.029.273	-5.996.908	-10,3%	100%
Energy	11.235.152	9.306.039	-1.929.113	-17,2%	17,9%
Crude oil	241	33	-207	-86,1%	0,0%
Fuel oil	1.429.721	1.037.288	-392.433	-27,4%	2,0%
Diesel oils	1.922.609	1.742.019	-180.590	-9,4%	3,3%
Petrol	2.701.409	2.232.820	-468.589	-17,3%	4,3%
Other petroleum products	416.067	228.204	-187.863	-45,2%	0,4%
Petroleum fuel gasses	42.095	51.131	9.036	21,5%	0,1%
Coal	99.258	55.950	-43.308	-43,6%	0,1%
Natural gas	3.144.755	2.667.639	-477.117	-15,2%	5,1%
Biofuel	1.478.998	1.290.956	-188.042	-12,7%	2,5%
Iron, steel and metallurgical products	2.559.320	2.283.682	-275.638	-10,8%	4,4%
Iron ore	8.202	3.477	-4.725	-57,6%	0,0%
Other minerals and metallic waste	327.054	330.668	3.614	1,1%	0,6%
Scrap iron	440.786	453.700	12.913	2,9%	0,9%
Iron and steel products	1.269.516	1.073.325	-196.191	-15,5%	2,1%
Other metallurgical products	513.762	422.513	-91.249	-17,8%	0,8%
Non-metallic minerals	968.743	861.889	-106.854	-11,0%	1,7%
Common salt	519.430	504.208	-15.222	-2,9%	1,0%
Other non-metallic minerals	449.313	357.681	-91.632	-20,4%	0,7%
Fertilizers	714.899	587.852	-127.047	-17,8%	1,1%
Phosphates	544	107	-437	-80,4%	0,0%
Potashes	532.976	407.458	-125.517	-23,6%	0,8%
Natural/artificial fertilizer	181.379	180.287	-1.092	-0,6%	0,3%
Chemicals	5.747.665	5.231.941	-515.724	-9,0%	10,1%
Chemical products	5.747.665	5.231.941	-515.724	-9,0%	10,1%
Construction materials	2.650.078	2.259.561	-390.517	-14,7%	4,3%
Asphalt	4.665	6.973	2.308	49,5%	0,0%
Cement and clinker	747.814	915.498	167.684	22,4%	1,8%
Other construction materials	1.897.599	1.337.091	-560.509	-29,5%	2,6%
Agriculture, livestock and food	11.713.421	10.725.670	-987.751	-8,4%	20,6%
Cereals and flours	785.386	975.823	190.437	24,2%	1,9%
Soya bean	1.464.872	1.619.711	154.839	10,6%	3,1%
Fruits, vegetables, pulses	558.343	444.116	-114.227	-20,5%	0,9%
Wines, beverages, spirits and derivatives	1.024.123	826.917	-197.206	-19,3%	1,6%
Canned goods	278.020	282.709	4.689	1,7%	0,5%
Tobacco, coffee, cocoa	818.920	663.526	-155.395	-19,0%	1,3%
Oils and fats	1.070.323	1.040.482	-29.841	-2,8%	2,0%
Other food products	3.611.796	3.508.976	-102.820	-2,8%	6,7%
Frozen fish	617.240	576.853	-40.386	-6,5%	1,1%
Feedstuffs and fodder	1.484.397	786.555	-697.841	-47,0%	1,5%
Other cargo	11.081.928	9.853.680	-1.228.248	-11,1%	18,9%
Timber	443.913	370.648	-73.265	-16,5%	0,7%
Paper and pulp	2.071.490	2.225.063	153.572	7,4%	4,3%
Machinery and spare parts	3.132.575	2.705.586	-426.989	-13,6%	5,2%
Other cargo by type	5.433.949	4.552.383	-881.566	-16,2%	8,7%
Vehicles and transport parts	11.354.975	10.918.958	-436.017	-3,8%	21,0%
Automobiles and parts	1.383.861	1.684.100	300.239	21,7%	3,2%
Tare of platform and wagons (Ro-Ro)	3.792.718	3.679.050	-113.668	-3,0%	7,1%
Tare of containers	6.178.396	5.555.808	-622.588	-10,1%	10,7%

GOODS TRAFFIC

Goods by classification 4.3.7.

Ranking of goods (tonnes)

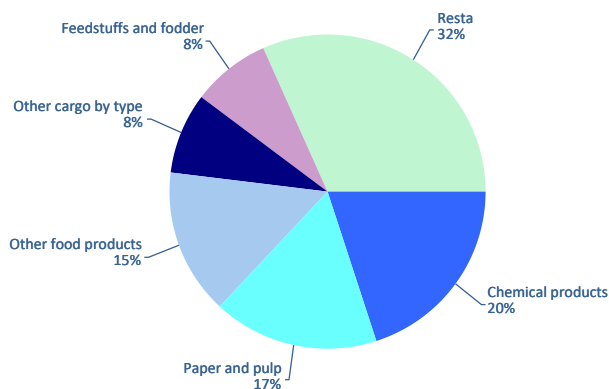


GOODS TRAFFIC

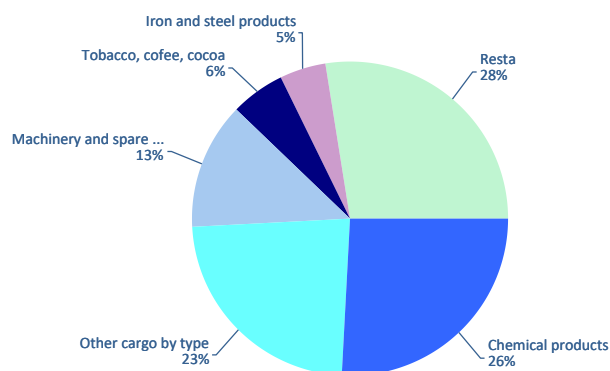
Containerized goods by classification 4.3.7. (Tares & transits not included)

Containerized goods classification	Loaded			Unloaded			Total monthly accumulated		
	2022	2023	%	2022	2023	%	2022	2023	%
Total tonnes (tares & transits not included)	7.602.647	6.518.743	-14,3%	4.974.061	4.929.547	-0,9%	12.576.708	11.448.291	-9,0%
Chemical products	1.565.669	1.301.026	-16,9%	1.119.093	1.272.218	13,7%	2.684.762	2.573.244	-4,2%
Other cargo by type	590.399	540.624	-8,4%	1.282.905	1.151.382	-10,3%	1.873.304	1.692.006	-9,7%
Paper and pulp	998.279	1.105.656	10,8%	156.787	145.134	-7,4%	1.155.066	1.250.791	8,3%
Other food products	1.203.229	982.897	-18,3%	70.003	88.210	26,0%	1.273.232	1.071.107	-15,9%
Machinery and spare parts	403.081	386.501	-4,1%	780.844	641.165	-17,9%	1.183.925	1.027.665	-13,2%
Feedstuffs and fodder	1.037.825	520.269	-49,9%	28.308	45.534	60,9%	1.066.133	565.804	-46,9%
Other construction materials	295.069	217.666	-26,2%	189.454	188.096	-0,7%	484.524	405.763	-16,3%
Wines, beverages, spirits and derivatives	341.444	344.771	1,0%	43.891	32.383	-26,2%	385.335	377.154	-2,1%
Iron and steel products	128.966	142.019	10,1%	260.831	226.677	-13,1%	389.796	368.696	-5,4%
Tobacco, coffee, cocoa	72.064	66.346	-7,9%	296.452	280.012	-5,5%	368.516	346.358	-6,0%
Automobiles and parts	113.913	113.105	-0,7%	137.761	178.051	29,2%	251.674	291.156	15,7%
Other metallurgical products	67.610	75.318	11,4%	157.484	139.231	-11,6%	225.094	214.550	-4,7%
Other minerals and metallic waste	143.171	149.634	4,5%	23.713	22.985	-3,1%	166.884	172.619	3,4%
Other non-metallic minerals	96.232	94.366	-1,9%	65.373	74.600	14,1%	161.605	168.966	4,6%
Oils and fats	145.888	114.845	-21,3%	33.083	36.415	10,1%	178.971	151.260	-15,5%
Fruits, vegetables, pulses	38.462	30.710	-20,2%	95.578	117.835	23,3%	134.041	148.545	10,8%
Canned goods	64.873	59.426	-8,4%	53.709	83.343	55,2%	118.582	142.769	20,4%
Biofuel	93.345	80.869	-13,4%	24.234	23.078	-4,8%	117.579	103.947	-11,6%
Natural/artificial fertilizer	44.276	35.370	-20,1%	26.254	45.693	74,0%	70.530	81.062	14,9%
Cereals and flours	35.157	46.582	32,5%	15.965	25.897	62,2%	51.123	72.479	41,8%
Scrap iron	21.380	22.104	3,4%	15.667	18.311	16,9%	37.047	40.415	9,1%
Frozen fish	7.759	5.383	-30,6%	41.810	32.325	-22,7%	49.568	37.708	-23,9%
Timber	17.080	9.914	-42,0%	17.091	19.271	12,8%	34.170	29.185	-14,6%
Other petroleum products	19.994	15.930	-20,3%	11.937	12.328	3,3%	31.932	28.258	-11,5%
Common salt	26.455	25.058	-5,3%	2.182	1.971	-9,7%	28.637	27.028	-5,6%
Coal	1.963	1.781	-9,3%	15.739	20.873	32,6%	17.702	22.654	28,0%
Cement and clinker	13.721	11.603	-15,4%	2	56	2430,2%	13.723	11.659	-15,0%
Fuel oil	8.314	5.935	-28,6%	3.007	3.283	9,2%	11.321	9.218	-18,6%
Petroleum fuel gasses	2.554	6.836	167,6%	126	872	590,4%	2.680	7.708	187,6%
Asphalt	3.679	5.325	44,7%	17	16	-4,5%	3.696	5.341	44,5%
Potashes	256	139	-45,8%	1.974	1.387	-29,7%	2.229	1.525	-31,6%
Diesel oils	0	560		25	0	-98,6%	25	561	2119,2%
Soya bean	34	3	-90,9%	2.180	509	-76,7%	2.215	512	-76,9%
Iron ore	141	25	-82,6%	338	367	8,6%	479	391	-18,3%
Phosphates	234	107	-54,3%	88	0		322	107	-66,8%
Petrol	117	28	-75,7%	157	16	-89,8%	274	44	-83,8%
Crude oil	9	11	24,4%	0	22		9	33	265,4%
Natural gas	4	2	-50,9%	0	0		4	2	-50,9%

Distribution of main goods Loaded 2023



Distribution of main goods Unloaded 2023

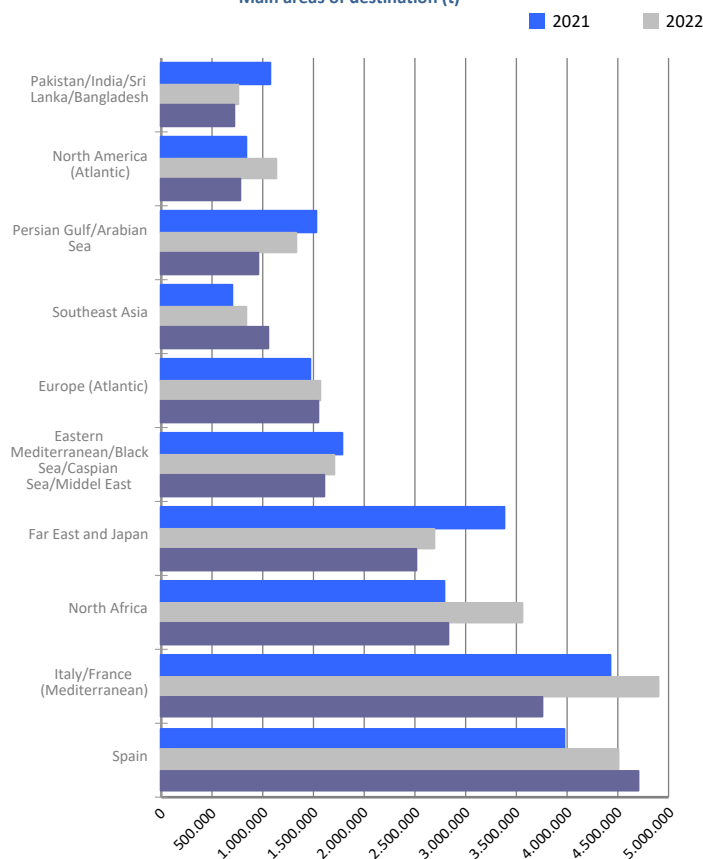


MARITIME TRAFFIC BY ORIGIN/DESTINATION

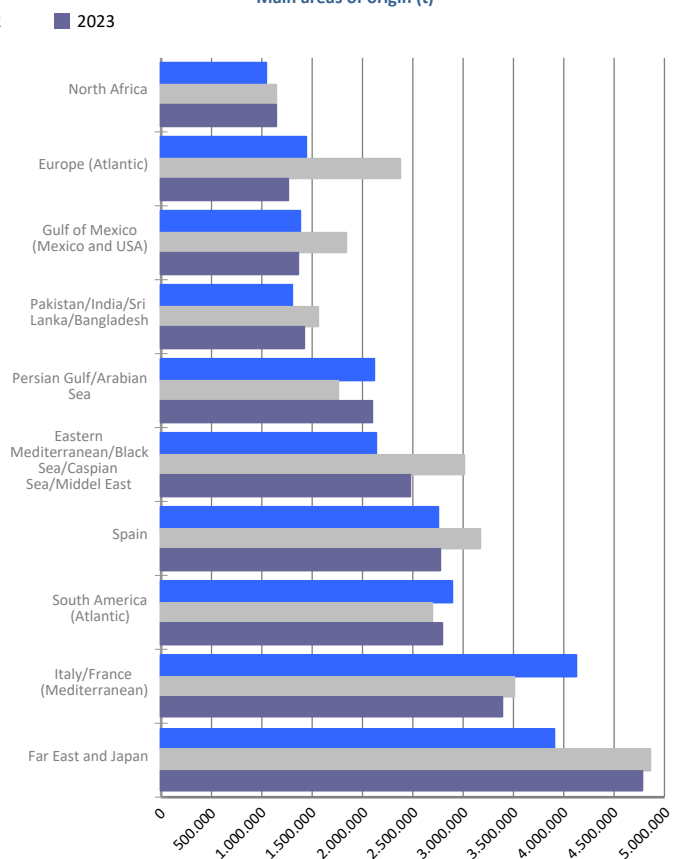
Geographical areas. Tonnes

Geographical areas	Monthly accumulated				% of total accum. 2023
	2022	2023	Diff. 23-22	%	
Tonnes	58.026.180	52.029.273	-5.996.908	-10,3%	100%
Spain	7.680.155	7.477.956	-202.198	-2,6%	14,4%
Far East and Japan	7.551.183	7.294.222	-256.960	-3,4%	14,0%
Italy/France (Mediterranean)	8.406.060	7.133.652	-1.272.408	-15,1%	13,7%
Eastern Mediterranean/Black Sea/Caspian Sea/Middel	4.718.267	4.083.613	-634.654	-13,5%	7,8%
North Africa	4.703.235	3.970.931	-732.304	-15,6%	7,6%
South America (Atlantic)	3.469.638	3.202.042	-267.596	-7,7%	6,2%
Persian Gulf/Arabian Sea	3.076.391	3.049.980	-26.412	-0,9%	5,9%
Europe (Atlantic)	3.940.126	2.827.172	-1.112.954	-28,2%	5,4%
Pakistan/India/Sri Lanka/Bangladesh	2.325.576	2.132.637	-192.938	-8,3%	4,1%
Southeast Asia	1.997.395	2.090.094	92.699	4,6%	4,0%
Gulf of Mexico (Mexico and USA)	2.591.787	2.065.224	-526.563	-20,3%	4,0%
West Africa	1.401.777	1.190.149	-211.628	-15,1%	2,3%
North America (Atlantic)	1.420.145	1.166.283	-253.863	-17,9%	2,2%
Central America and Caribbean	1.061.343	980.588	-80.754	-7,6%	1,9%
Canada (Atlantic) and Great Lakes	1.157.746	979.961	-177.785	-15,4%	1,9%
Red Sea	798.299	745.559	-52.740	-6,6%	1,4%
South America (Pacific)	491.773	494.598	2.825	0,6%	1,0%
Unknown area (Tare of empty containers)	360.808	442.421	81.613	22,6%	0,9%
South-Eastern Africa/Indian Ocean	522.675	432.267	-90.408	-17,3%	0,8%
Australia, New Zealand/Pacific Islands	210.742	175.988	-34.755	-16,5%	0,3%
North America (Pacific)	141.061	93.936	-47.125	-33,4%	0,2%

Main areas of destination (t)



Main areas of origin (t)

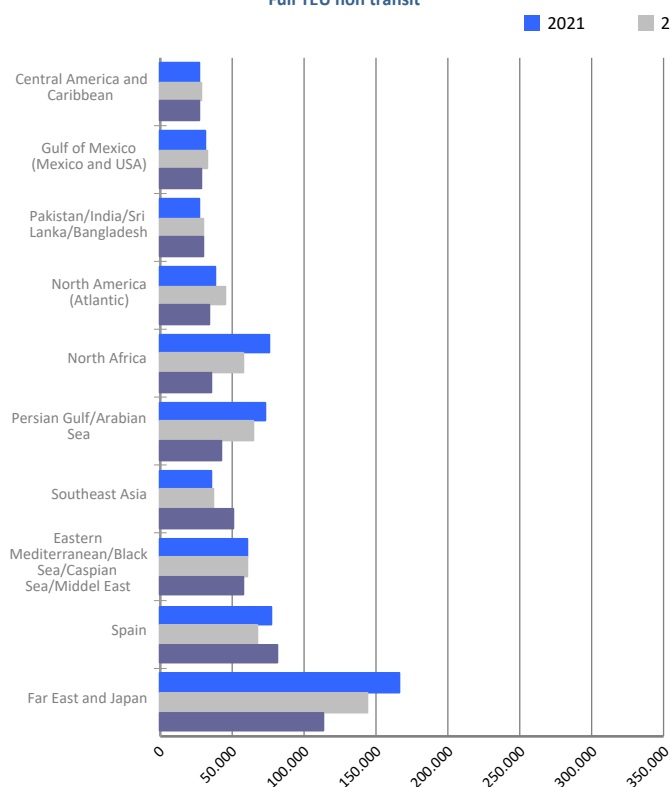


MARITIME TRAFFIC BY ORIGIN/DESTINATION

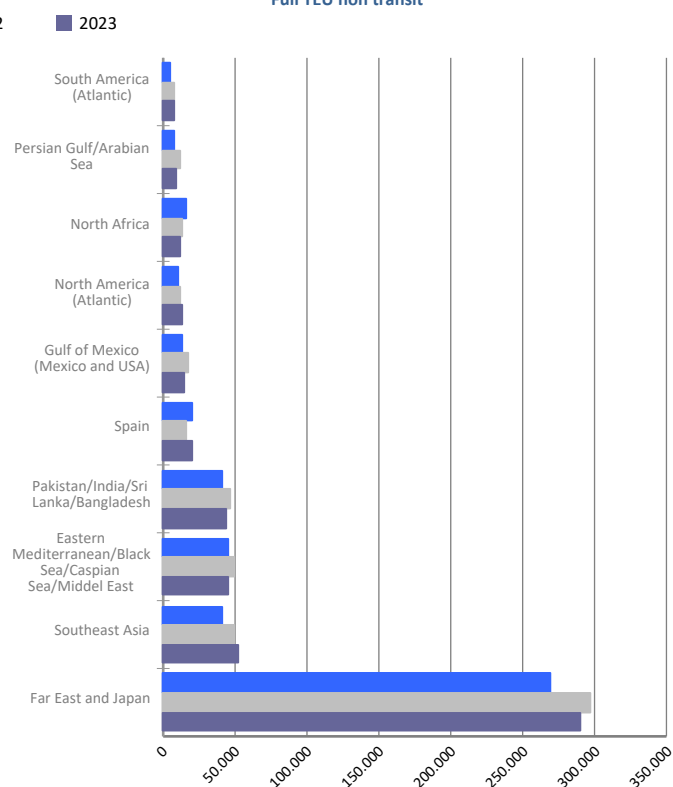
Geographical areas. Full TEU non transit

Geographical areas	Monthly accumulated				% of total accum. 2023
	2022	2023	Diff. 23-22	%	
Full TEU non transit	1.269.083	1.179.708	-89.375	-7,0%	100%
Far East and Japan	441.624	403.571	-38.053	-8,6%	34,2%
Southeast Asia	86.596	103.422	16.826	19,4%	8,8%
Eastern Mediterranean/Black Sea/Caspian Sea/Middel	110.611	103.046	-7.565	-6,8%	8,7%
Spain	84.541	101.431	16.890	20,0%	8,6%
Pakistan/India/Sri Lanka/Bangladesh	76.107	72.877	-3.230	-4,2%	6,2%
Persian Gulf/Arabian Sea	77.159	52.142	-25.017	-32,4%	4,4%
North Africa	71.488	47.314	-24.174	-33,8%	4,0%
North America (Atlantic)	56.943	46.890	-10.053	-17,7%	4,0%
Gulf of Mexico (Mexico and USA)	49.297	43.666	-5.631	-11,4%	3,7%
Central America and Caribbean	34.617	34.002	-615	-1,8%	2,9%
South America (Atlantic)	31.622	29.179	-2.444	-7,7%	2,5%
South America (Pacific)	29.051	26.325	-2.726	-9,4%	2,2%
Red Sea	24.457	24.236	-221	-0,9%	2,1%
West Africa	24.553	23.480	-1.073	-4,4%	2,0%
South-Eastern Africa/Indian Ocean	23.339	20.833	-2.506	-10,7%	1,8%
Italy/France (Mediterranean)	9.860	17.197	7.337	74,4%	1,5%
Canada (Atlantic) and Great Lakes	13.303	11.003	-2.301	-17,3%	0,9%
Australia, New Zealand/Pacific Islands	10.699	9.771	-929	-8,7%	0,8%
North America (Pacific)	6.793	5.635	-1.158	-17,0%	0,5%
Europe (Atlantic)	6.426	3.692	-2.734	-42,5%	0,3%

Main areas of destination
Full TEU non transit



Main areas of origin
Full TEU non transit



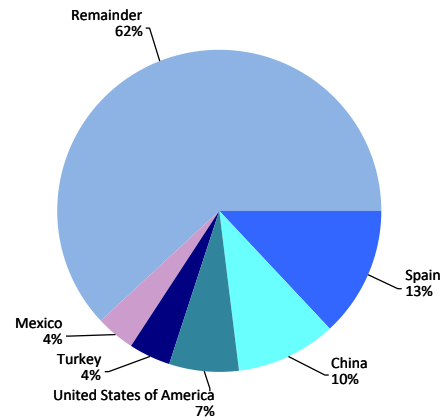
Note: From August 2014, the containerized cargo with origin or destination in Barcelona excludes maritime transit traffic and empty containers.

MARITIME TRAFFIC BY ORIGIN/DESTINATION

Ranking countries. Full TEU non transit

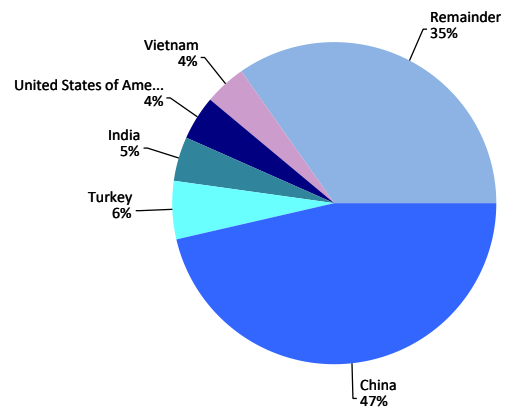
Loaded	Full TEU	% 23-22	% a/packaging
Spain	81.484	19,5%	13,0%
China	62.859	-18,4%	10,0%
United States of America	43.901	-24,3%	7,0%
Turkey	25.799	-15,7%	4,1%
Mexico	24.737	-5,1%	3,9%
United Arab Emirates	24.457	-37,9%	3,9%
India	24.318	3,4%	3,9%
Saudi Arabia	21.576	-14,2%	3,4%
Japan	20.152	-15,1%	3,2%
Morocco	17.906	-2,0%	2,9%
Malaysia	14.359	54,2%	2,3%
Korea (South)	13.724	-36,3%	2,2%
Vietnam	12.127	67,3%	1,9%
Israel	11.743	31,8%	1,9%
Indonesia	11.717	29,9%	1,9%
Remainder	217.115	-16,8%	34,6%
TOTAL	627.972	-11,1%	100%

Main countries. Loaded



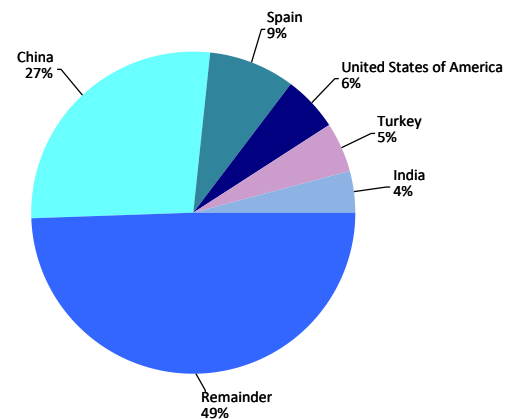
Unloaded	Full TEU	% 23-22	% a/packaging
China	256.624	-4,3%	46,5%
Turkey	31.765	-11,6%	5,8%
India	24.877	-5,4%	4,5%
United States of America	24.498	-2,2%	4,4%
Vietnam	22.936	13,1%	4,2%
Spain	19.947	21,9%	3,6%
Korea (South)	19.717	46,2%	3,6%
Bangladesh	11.238	-0,5%	2,0%
Egypt	9.419	1,8%	1,7%
Saudi Arabia	8.844	-17,6%	1,6%
Greece	7.467	3,6%	1,4%
Indonesia	7.143	-7,6%	1,3%
Pakistan	6.689	-12,5%	1,2%
Thailand	6.424	5,7%	1,2%
Cambodia	6.227	53,6%	1,1%
Remainder	87.923	-5,1%	15,9%
TOTAL	551.736	-1,9%	100%

Main countries. Unloaded



Total	Full TEU	% 23-22	% a/packaging
China	319.483	-7,5%	27,1%
Spain	101.431	20,0%	8,6%
United States of America	68.399	-17,6%	5,8%
Turkey	57.564	-13,5%	4,9%
India	49.195	-1,2%	4,2%
Vietnam	35.063	27,3%	3,0%
Korea (South)	33.441	-4,6%	2,8%
Saudi Arabia	30.420	-15,2%	2,6%
Mexico	30.376	-8,5%	2,6%
United Arab Emirates	27.210	-35,9%	2,3%
Japan	26.078	-11,4%	2,2%
Morocco	19.861	-2,4%	1,7%
Egypt	18.892	-7,8%	1,6%
Indonesia	18.860	12,6%	1,6%
Greece	17.904	1,1%	1,5%
Remainder	325.534	-9,8%	27,6%
TOTAL	1.179.708	-7,0%	100%

Main countries. Total



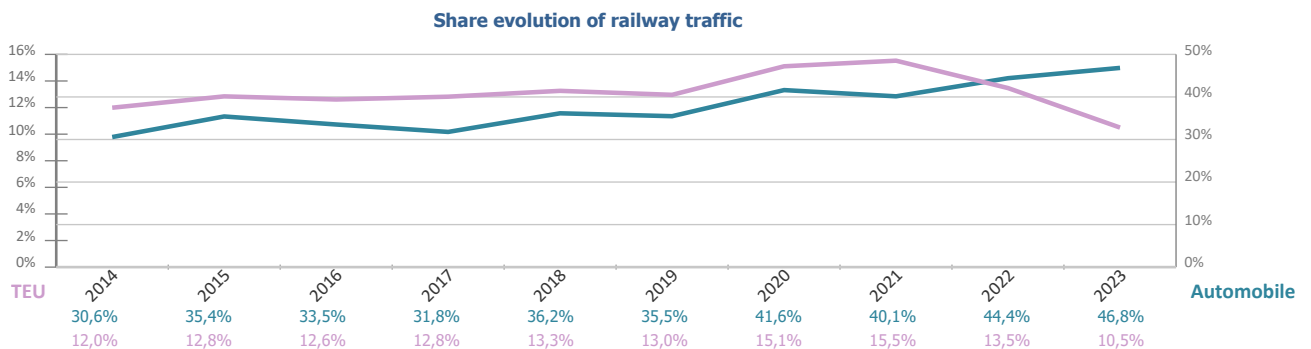
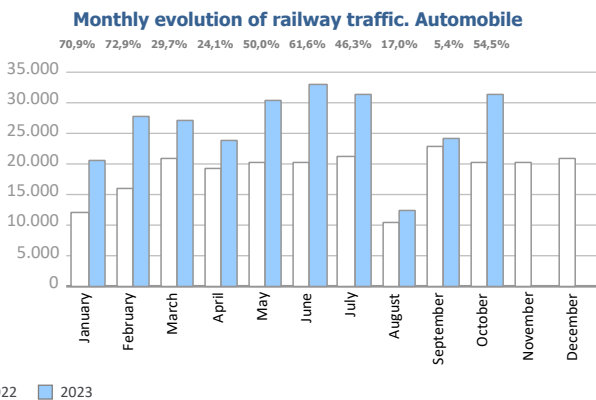
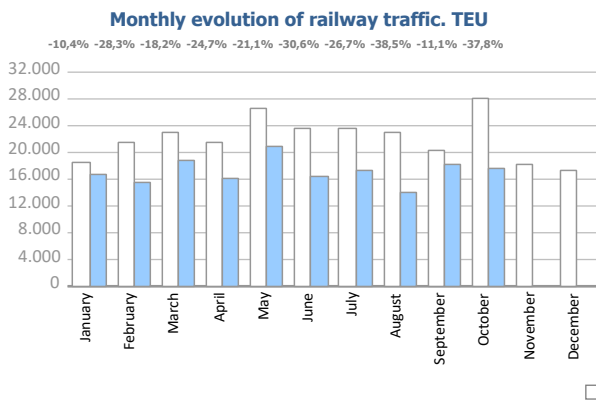
RAILWAY TRAFFIC

Monthly evolution of railway traffic. TEU

Monthly evolution of railway traffic	TEU 2022			TEU 2023			%		% of total port traffic 2023
	Loaded	Unloaded	Total	Loaded	Unloaded	Total	Monthly	Accumulated	
January	9.292	9.346	18.638	7.711	8.992	16.703	-10,4%	-10,4%	10,8%
February	11.086	10.377	21.463	6.537	8.861	15.398	-28,3%	-19,9%	10,1%
March	11.635	11.369	23.004	8.523	10.303	18.826	-18,2%	-19,3%	11,4%
April	11.441	10.015	21.456	6.796	9.358	16.154	-24,7%	-20,7%	10,7%
May	13.313	13.226	26.539	9.619	11.317	20.936	-21,1%	-20,8%	11,8%
June	11.659	11.823	23.482	6.787	9.510	16.297	-30,6%	-22,5%	9,4%
July	11.751	11.991	23.742	6.980	10.415	17.395	-26,7%	-23,1%	10,1%
August	11.481	11.402	22.883	5.378	8.693	14.071	-38,5%	-25,1%	8,5%
September	9.426	11.005	20.431	7.750	10.419	18.169	-11,1%	-23,7%	11,2%
October	10.791	17.416	28.207	7.175	10.362	17.537	-37,8%	-25,4%	11,0%
November	9.316	8.965	18.281						
December	7.757	9.677	17.434						
Total	128.948	136.612	265.560	73.256	98.230	171.486			10,5%

Monthly evolution of railway traffic. Automobile

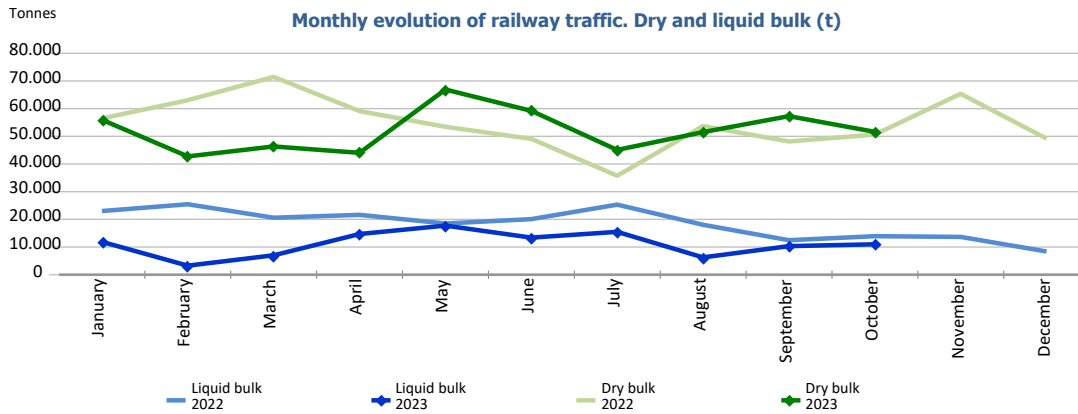
Monthly evolution of railway traffic	Automobile 2022			Automobile 2023			%		% of total port traffic 2023
	Loaded	Unloaded	Total	Loaded	Unloaded	Total	Monthly	Accumulated	
January	1.359	10.591	11.950	4.150	16.267	20.417	70,9%	70,9%	50,7%
February	2.174	13.813	15.987	5.096	22.553	27.649	72,9%	72,1%	43,1%
March	2.418	18.583	21.001	3.567	23.677	27.244	29,7%	53,9%	42,7%
April	2.670	16.613	19.283	4.515	19.415	23.930	24,1%	45,5%	41,5%
May	2.602	17.588	20.190	5.929	24.358	30.287	50,0%	46,5%	47,7%
June	2.449	17.909	20.358	5.878	27.021	32.899	61,6%	49,3%	49,5%
July	2.309	19.053	21.362	6.807	24.450	31.257	46,3%	48,8%	49,3%
August	2.620	7.962	10.582	1.982	10.394	12.376	17,0%	46,4%	32,2%
September	2.564	20.415	22.979	5.584	18.633	24.217	5,4%	40,7%	52,4%
October	1.750	18.476	20.226	6.117	25.138	31.255	54,5%	42,2%	57,3%
November	3.947	16.269	20.216						
December	3.619	17.133	20.752						
Total	30.481	194.405	224.886	49.625	211.906	261.531			46,8%



RAILWAY TRAFFIC

Monthly evolution of railway traffic. Dry and liquid bulk. Tonnes

Monthly evolution of railway traffic	Tonnes 2022			Tonnes 2023			%	
	Dry bulk	Liquid bulk	Total	Dry bulk	Liquid bulk	Total	Monthly	Accumulated
January	56.474	23.006	79.480	55.964	11.888	67.852	-14,6%	-14,6%
February	63.027	25.451	88.478	42.746	3.263	46.009	-48,0%	-32,2%
March	71.467	20.589	92.056	46.334	7.014	53.348	-42,0%	-35,7%
April	59.099	21.628	80.727	44.027	14.701	58.728	-27,3%	-33,7%
May	53.459	18.505	71.964	66.894	17.738	84.632	17,6%	-24,7%
June	49.089	20.079	69.168	59.200	13.398	72.598	5,0%	-20,5%
July	35.755	25.317	61.072	45.081	15.485	60.566	-0,8%	-18,3%
August	53.685	18.038	71.723	51.511	6.251	57.762	-19,5%	-18,4%
September	48.129	12.463	60.592	57.280	10.320	67.600	11,6%	-15,7%
October	50.628	13.911	64.539	51.617	10.995	62.612	-3,0%	-14,6%
November	65.362	13.659	79.021					
December	49.199	8.395	57.594					
Total	655.373	221.041	876.414	520.654	111.053	631.707		



Railway traffic.

Railway gauge traffic (u)	Monthly accumulated		%	% of accumulated total 2023
	2022	2023		
Iberian gauge	7.149	5.901	-17,5%	67,5%
UIC	259	419	61,8%	4,8%
FGC	2.081	2.420	16,3%	27,7%
Total	9.489	8.740	-7,9%	100%

