

**Port of Barcelona traffic statistics**

**Accumulated data September 2023**

**Statistics Service**

## Index

---

### Traffic indicators

Total traffic	3
Main indicators	4
Breakdown of total traffic	5
Breakdown of traffic in transit	6
Monthly evolution of traffic	7

### Container traffic

TEU evolution	8
Container traffic (TEU)	9

### Passenger traffic

Passenger traffic	10
Passenger classification	11

### Automobile traffic

Automobile traffic	12
--------------------	----

### Short Sea Shipping traffic (SSS)

SSS Goods classification	13
SSS General cargo and Motorways of the sea (MoS)	14
SSS Ranking countries	15

### Vessel traffic

Vessel traffic	16
----------------	----

### Goods traffic

Mode of packaging and navigation	17
Goods by classification 4.3.7.	18
Goods ranking	19
Containerized goods by classification 4.3.7.	20

### Maritime traffic by origin/destination

Geographical areas. Tonnes	21
Geographical areas. Full TEU non transit	22
Ranqing countries. Full TEU non transit	23

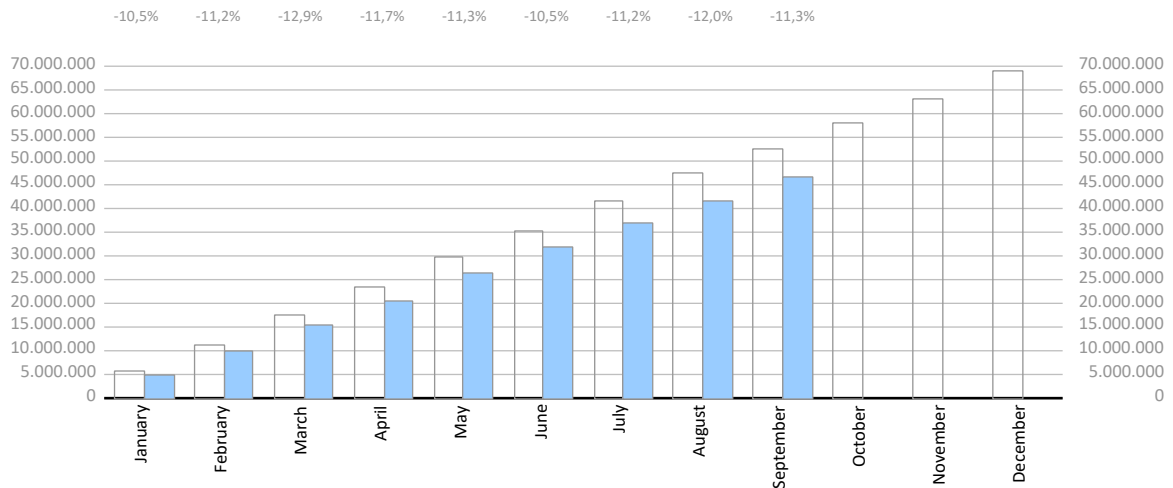
### Railway traffic

Evolution of railway traffic (TEU and automobile)	24
Evolution of railway traffic (Solid and liquid bulk)	25
Railway gauge traffic	25

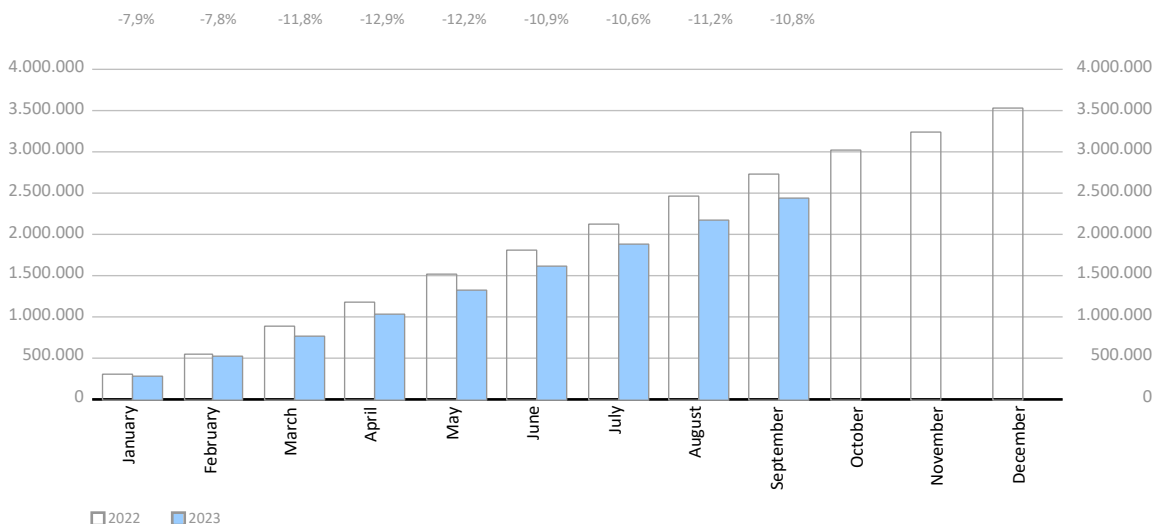
# TRAFFIC INDICATORS

Total traffic	Monthly accumulated				% 23-22 accum. August	% 23-22 accum. July	Total traffic 2022
	2022	2023	Diff. 23-22	%			
<b>Total throughput (tonnes)</b>	<b>52.666.246</b>	<b>46.706.957</b>	<b>-5.959.289</b>	<b>-11,3%</b>	<b>-12,0%</b>	<b>-11,2%</b>	<b>69.141.288</b>
Supplies	1.437.123	1.163.917	-273.206	-19,0%	-18,0%	-17,1%	1.854.561
Fishing	2.704	1.323	-1.380	-51,1%	-50,1%	-51,6%	3.201
<b>TOTAL TRAFFIC (tonnes)</b>	<b>54.106.073</b>	<b>47.872.197</b>	<b>-6.233.876</b>	<b>-11,5%</b>	<b>-12,2%</b>	<b>-11,4%</b>	<b>70.999.050</b>
<b>TEU</b>	<b>2.741.667</b>	<b>2.445.659</b>	<b>-296.008</b>	<b>-10,8%</b>	<b>-11,2%</b>	<b>-10,6%</b>	<b>3.525.036</b>
<b>UTI</b>	<b>323.054</b>	<b>319.314</b>	<b>-3.740</b>	<b>-1,2%</b>	<b>-1,2%</b>	<b>-1,3%</b>	<b>419.191</b>
<b>Automobiles (units)</b>	<b>378.935</b>	<b>591.042</b>	<b>212.107</b>	<b>56,0%</b>	<b>64,4%</b>	<b>67,4%</b>	<b>591.158</b>
<b>Vessels (units)</b>	<b>6.520</b>	<b>6.638</b>	<b>118</b>	<b>1,8%</b>	<b>1,9%</b>	<b>2,0%</b>	<b>8.713</b>
<b>Railway traffic (units)</b>	<b>8.543</b>	<b>7.777</b>	<b>-766</b>	<b>-9,0%</b>	<b>-9,1%</b>	<b>-6,7%</b>	<b>11.234</b>
<b>Cruise passengers (units)</b>	<b>1.673.081</b>	<b>2.671.484</b>	<b>998.403</b>	<b>59,7%</b>	<b>68,3%</b>	<b>81,5%</b>	<b>2.334.305</b>
<b>Ferry passengers (units)</b>	<b>1.346.743</b>	<b>1.468.534</b>	<b>121.791</b>	<b>9,0%</b>	<b>9,0%</b>	<b>15,1%</b>	<b>1.596.267</b>
<b>Automobile passengers (units)</b>	<b>405.926</b>	<b>429.540</b>	<b>23.614</b>	<b>5,8%</b>	<b>5,2%</b>	<b>11,3%</b>	<b>484.993</b>

Monthly evolution of the accumulated traffic of goods. Tonnes



Monthly evolution of the accumulated traffic of goods. TEU



## TRAFFIC INDICATORS

Main indicators	Monthly accumulated				Last 12 months	Total traffic 2022	% 12 months-2022
	2022	2023	Diff. 23-22	%			

### Goods indicators by navigation and operation (tonnes)

	2022	2023	Diff. 23-22	%	Last 12 months	Total traffic 2022	% 12 months-2022
<b>Navigation (t)</b>	<b>52.666.246</b>	<b>46.706.957</b>	<b>-5.959.289</b>	<b>-11,3%</b>	<b>63.181.999</b>	<b>69.141.288</b>	<b>-8,6%</b>
Domestic	6.226.466	6.207.012	-19.454	-0,3%	8.266.764	8.286.217	-0,2%
Foreign	46.439.780	40.499.944	-5.939.835	-12,8%	54.915.235	60.855.071	-9,8%
<b>Operation (t)</b>	<b>52.666.246</b>	<b>46.706.957</b>	<b>-5.959.289</b>	<b>-11,3%</b>	<b>63.181.999</b>	<b>69.141.288</b>	<b>-8,6%</b>
Loaded	15.281.118	14.614.851	-666.267	-4,4%	19.551.336	20.217.603	-3,3%
Unloaded	17.427.246	17.152.600	-274.646	-1,6%	23.038.073	23.312.719	-1,2%
Transit	19.957.882	14.939.506	-5.018.376	-25,1%	20.592.590	25.610.966	-19,6%

### Goods indicators by main units

	2022	2023	Diff. 23-22	%	Last 12 months	Total traffic 2022	% 12 months-2022
<b>Containers (TEU)</b>	<b>2.741.667</b>	<b>2.445.659</b>	<b>-296.008</b>	<b>-10,8%</b>	<b>3.229.028</b>	<b>3.525.036</b>	<b>-8,4%</b>
TEU O/D	1.509.736	1.475.970	-33.766	-2,2%	1.938.987	1.972.753	-1,7%
TEU transit	1.231.931	969.689	-262.242	-21,3%	1.290.041	1.552.283	-16,9%
Containerized tonnes	29.419.764	24.898.101	-4.521.663	-15,4%	33.104.173	37.625.837	-12,0%
Level of containerization	77,27%	74,31%			74,47%	76,75%	
<b>Passengers (u)</b>	<b>3.019.824</b>	<b>4.140.018</b>	<b>1.120.194</b>	<b>37,1%</b>	<b>5.050.766</b>	<b>3.930.572</b>	<b>28,5%</b>
Regular line	1.346.743	1.468.534	121.791	9,0%	1.718.058	1.596.267	7,6%
Pleasure cruises	1.673.081	2.671.484	998.403	59,7%	3.332.708	2.334.305	42,8%
<b>Automobiles (u)</b>	<b>378.935</b>	<b>591.042</b>	<b>212.107</b>	<b>56,0%</b>	<b>803.265</b>	<b>591.158</b>	<b>35,9%</b>
Loaded	228.873	314.434	85.561	37,4%	413.440	327.879	26,1%
Unloaded	97.822	189.491	91.669	93,7%	270.355	178.686	51,3%
Transit	52.240	87.117	34.877	66,8%	119.470	84.593	41,2%
<b>Vessels (u)</b>	<b>6.520</b>	<b>6.638</b>	<b>118</b>	<b>1,8%</b>	<b>8.831</b>	<b>8.713</b>	<b>1,4%</b>
Number of calls	6.520	6.638	118	1,8%	8.831	8.713	1,4%
GT	260.393.602	280.863.020	20.469.418	7,9%	371.344.166	350.874.748	5,8%
Average tonnes by vessel	8.078	7.036	-1.041	-12,9%	7.155	7.935	-9,8%
<b>UTI</b>	<b>323.054</b>	<b>319.314</b>	<b>-3.740</b>	<b>-1,2%</b>	<b>415.451</b>	<b>419.191</b>	<b>-0,9%</b>
Domestic	198.472	203.534	5.063	2,6%	258.737	253.675	2,0%
% Full	61,2%	61,7%			61,7%	61,3%	
Foreign	124.582	115.780	-8.803	-7,1%	156.714	165.516	-5,3%
% Full	92,7%	91,8%			92,0%	92,7%	

## TRAFFIC INDICATORS

Breakdown of total traffic (tonnes)	Monthly accumulated				% 23-22 accum. August	% 23-22 accum. July	% of total accum. 2023
	2022	2023	Diff. 23-22	%			
<b>Goods indicators by type of packaging (t)</b>	<b>52.666.246</b>	<b>46.706.957</b>	<b>-5.959.289</b>	<b>-11,3%</b>	<b>-12,0%</b>	<b>-11,2%</b>	<b>100%</b>
<b>Liquid bulk</b>	<b>11.329.024</b>	<b>9.552.423</b>	<b>-1.776.601</b>	<b>-15,7%</b>	<b>-18,7%</b>	<b>-19,1%</b>	<b>20,5%</b>
<b>Hydrocarbons</b>	<b>8.677.998</b>	<b>6.908.616</b>	<b>-1.769.382</b>	<b>-20,4%</b>	<b>-23,8%</b>	<b>-23,5%</b>	<b>14,8%</b>
Natural gas	2.906.240	2.322.963	-583.276	-20,1%	-25,6%	-22,4%	5,0%
Petrol	2.505.530	1.894.274	-611.256	-24,4%	-27,6%	-29,8%	4,1%
Diesel oils	1.670.688	1.594.894	-75.794	-4,5%	-6,8%	-4,7%	3,4%
Fuel oil	1.251.247	941.547	-309.700	-24,8%	-24,2%	-25,9%	2,0%
Other petroleum products	329.379	136.282	-193.096	-58,6%	-63,6%	-67,7%	0,3%
Remainder	14.914	18.656	3.741	25,1%	28,0%	32,0%	0,0%
<b>Other liquid bulk</b>	<b>2.651.027</b>	<b>2.643.807</b>	<b>-7.219</b>	<b>-0,3%</b>	<b>-1,9%</b>	<b>-4,6%</b>	<b>5,7%</b>
Biofuel	1.214.494	1.023.858	-190.636	-15,7%	-15,5%	-16,9%	2,2%
Chemical products	740.646	933.684	193.038	26,1%	23,7%	19,5%	2,0%
Oils and fats	597.240	630.106	32.866	5,5%	-0,7%	-4,2%	1,3%
Natural/artificial fertilizer	42.377	40.351	-2.026	-4,8%	-4,8%	1,9%	0,1%
Other food products	17.909	11.918	-5.991	-33,5%	-52,8%	-52,8%	0,0%
Remainder	38.361	3.890	-34.471	-89,9%	-85,6%	-100,0%	0,0%
<b>Dry bulk</b>	<b>3.263.779</b>	<b>3.647.483</b>	<b>383.704</b>	<b>11,8%</b>	<b>13,4%</b>	<b>16,5%</b>	<b>7,8%</b>
<b>Special installation</b>	<b>2.940.809</b>	<b>3.430.340</b>	<b>489.530</b>	<b>16,6%</b>	<b>18,6%</b>	<b>21,6%</b>	<b>7,3%</b>
Soya bean	1.050.207	1.113.286	63.079	6,0%	7,9%	-0,2%	2,4%
Cement and clinker	578.189	827.402	249.213	43,1%	40,6%	59,0%	1,8%
Cereals and flours	438.525	686.704	248.178	56,6%	69,9%	107,2%	1,5%
Common salt	371.496	411.626	40.130	10,8%	17,9%	28,4%	0,9%
Potashes	465.014	371.143	-93.871	-20,2%	-22,3%	-27,2%	0,8%
Remainder	37.377	20.179	-17.199	-46,0%	-46,0%	-34,8%	0,0%
<b>Without special installation</b>	<b>322.970</b>	<b>217.144</b>	<b>-105.826</b>	<b>-32,8%</b>	<b>-33,8%</b>	<b>-29,3%</b>	<b>0,5%</b>
Scrap iron	180.774	145.542	-35.232	-19,5%	-16,7%	-15,8%	0,3%
Other non-metallic minerals	67.966	34.754	-33.211	-48,9%	-53,3%	-50,7%	0,1%
Chemical products	20.200	17.300	-2.900	-14,4%	-35,9%	-23,4%	0,0%
Other minerals and metallic waste	13.370	10.916	-2.454	-18,4%	-18,4%	29,9%	0,0%
Common salt	12.523	8.606	-3.917	-31,3%	-53,2%	-53,2%	0,0%
Remainder	28.137	26	-28.111	-99,9%	-99,9%	-99,8%	0,0%
<b>General cargo</b>	<b>38.073.443</b>	<b>33.507.051</b>	<b>-4.566.392</b>	<b>-12,0%</b>	<b>-12,1%</b>	<b>-11,1%</b>	<b>71,7%</b>
<b>Containerized</b>	<b>29.419.764</b>	<b>24.898.101</b>	<b>-4.521.663</b>	<b>-15,4%</b>	<b>-15,9%</b>	<b>-14,5%</b>	<b>53,3%</b>
Tare of containers	5.616.466	4.999.779	-616.687	-11,0%	-11,4%	-10,7%	10,7%
Chemical products	4.310.079	3.706.496	-603.582	-14,0%	-14,2%	-12,8%	7,9%
Other cargo by type	3.507.278	2.702.210	-805.068	-23,0%	-23,7%	-23,3%	5,8%
Other food products	2.760.684	2.685.947	-74.737	-2,7%	-3,6%	-5,3%	5,8%
Paper and pulp	1.765.001	1.853.286	88.285	5,0%	1,5%	1,8%	4,0%
Remainder	11.460.257	8.950.382	-2.509.875	-21,9%	-22,0%	-19,2%	19,2%
<b>Non-containerized</b>	<b>8.653.679</b>	<b>8.608.950</b>	<b>-44.729</b>	<b>-0,5%</b>	<b>0,8%</b>	<b>0,3%</b>	<b>18,4%</b>
Tare of platform and wagons (Ro-Ro)	3.441.884	3.325.199	-116.685	-3,4%	-0,1%	0,0%	7,1%
Other cargo by type	1.427.298	1.378.338	-48.961	-3,4%	-4,1%	-4,2%	3,0%
Automobiles and parts	650.713	982.983	332.270	51,1%	60,0%	62,4%	2,1%
Machinery and spare parts	825.394	849.349	23.955	2,9%	2,3%	2,2%	1,8%
Other food products	411.952	420.786	8.834	2,1%	3,2%	4,9%	0,9%
Remainder	1.896.438	1.652.295	-244.143	-12,9%	-14,1%	-17,1%	3,5%

## TRAFFIC INDICATORS

Breakdown of traffic in transit (tonnes)	Monthly accumulated				% 23-22 accum. August	% 23-22 accum. July	% of total accum. 2023
	2022	2023	Diff. 23-22	%			
<b>Goods indicators by type of packaging (t)</b>	<b>19.957.882</b>	<b>14.939.506</b>	<b>-5.018.376</b>	<b>-25,1%</b>	<b>-27,0%</b>	<b>-26,5%</b>	<b>100%</b>
<b>Liquid bulk</b>	<b>4.656.359</b>	<b>2.984.687</b>	<b>-1.671.672</b>	<b>-35,9%</b>	<b>-38,8%</b>	<b>-40,5%</b>	<b>20,0%</b>
<b>Hydrocarbons</b>	<b>3.563.421</b>	<b>1.943.140</b>	<b>-1.620.281</b>	<b>-45,5%</b>	<b>-49,5%</b>	<b>-51,1%</b>	<b>13,0%</b>
Petrol	1.978.999	804.851	-1.174.149	-59,3%	-62,3%	-63,8%	5,4%
Fuel oil	858.473	639.179	-219.294	-25,5%	-25,5%	-27,7%	4,3%
Diesel oils	582.536	481.402	-101.135	-17,4%	-25,0%	-22,5%	3,2%
Other petroleum products	143.413	17.708	-125.705	-87,7%			0,1%
Remainder	0	0	0				0,0%
<b>Other liquid bulk</b>	<b>1.092.938</b>	<b>1.041.547</b>	<b>-51.391</b>	<b>-4,7%</b>	<b>-1,6%</b>	<b>-4,3%</b>	<b>7,0%</b>
Biofuel	900.684	598.955	-301.730	-33,5%	-30,7%	-32,1%	4,0%
Chemical products	142.230	423.506	281.275	197,8%	185,0%	157,0%	2,8%
Oils and fats	15.178	19.087	3.909	25,8%	78,0%	132,0%	0,1%
Other cargo by type	26.259	0	-26.259				0,0%
Wines, beverages, spirits and derivatives	8.587	0	-8.587				0,0%
Remainder	0	0	0				0,0%
<b>Dry bulk</b>	<b>6.300</b>	<b>9.425</b>	<b>3.125</b>	<b>49,6%</b>	<b>1,3%</b>	<b>1,3%</b>	<b>0,1%</b>
<b>Special installation</b>	<b>6.300</b>	<b>9.425</b>	<b>3.125</b>	<b>49,6%</b>	<b>1,3%</b>	<b>1,3%</b>	<b>0,1%</b>
Potashes	0	9.425	9.425				0,1%
Cereals and flours	6.300	0	-6.300				0,0%
Remainder	0	0	0				0,0%
<b>Without special installation</b>	<b>0</b>	<b>0</b>	<b>0</b>				<b>0,0%</b>
Remainder	0	0	0				0,0%
<b>General cargo</b>	<b>15.295.223</b>	<b>11.945.394</b>	<b>-3.349.829</b>	<b>-21,9%</b>	<b>-23,2%</b>	<b>-21,8%</b>	<b>80,0%</b>
<b>Containerized</b>	<b>14.941.766</b>	<b>11.623.257</b>	<b>-3.318.508</b>	<b>-22,2%</b>	<b>-23,5%</b>	<b>-22,0%</b>	<b>77,8%</b>
Tare of containers	2.538.957	2.002.657	-536.300	-21,1%	-22,0%	-21,9%	13,4%
Other food products	1.615.294	1.722.423	107.128	6,6%	4,8%	1,8%	11,5%
Chemical products	1.852.317	1.393.829	-458.488	-24,8%	-25,0%	-22,6%	9,3%
Other cargo by type	1.808.474	1.186.085	-622.389	-34,4%	-36,2%	-35,7%	7,9%
Paper and pulp	725.240	734.492	9.252	1,3%	-4,5%	-2,0%	4,9%
Remainder	6.401.483	4.583.772	-1.817.712	-28,4%	-29,3%	-26,1%	30,7%
<b>Non-containerized</b>	<b>353.457</b>	<b>322.137</b>	<b>-31.321</b>	<b>-8,9%</b>	<b>-11,7%</b>	<b>-12,5%</b>	<b>2,2%</b>
Automobiles and parts	91.629	138.798	47.169	51,5%	61,4%	70,7%	0,9%
Machinery and spare parts	46.862	50.452	3.590	7,7%	8,4%	6,3%	0,3%
Tare of platform and wagons (Ro-Ro)	65.295	42.745	-22.550	-34,5%	-38,2%	-38,0%	0,3%
Other cargo by type	50.191	40.718	-9.473	-18,9%	-22,1%	-20,4%	0,3%
Wines, beverages, spirits and derivatives	3.330	18.060	14.731	442,4%	377,0%	408,6%	0,1%
Remainder	96.152	31.364	-64.787	-67,4%	-71,0%	-72,0%	0,2%

# TRAFFIC INDICATORS

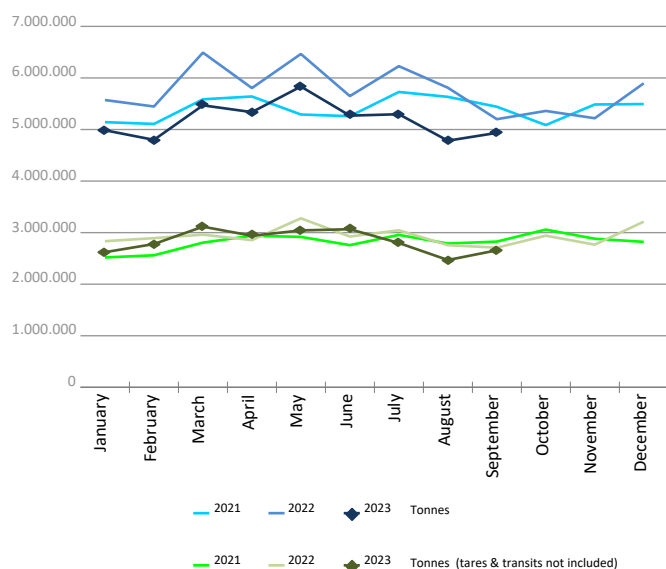
## Monthly evolution of traffic. Tonnes

Monthly evolution of traffic	Total tonnes			%		Tonnes (tares & transits not included)			%	
	2022	2023	Diff. 23-22	Monthly	Accumulated	2022	2023	Diff. 23-22	Monthly	Accumulated
January	5.571.593	4.985.397	-586.196	-10,5%	-10,5%	2.833.810	2.620.827	-212.982	-7,5%	-7,5%
February	5.446.375	4.799.349	-647.026	-11,9%	-11,2%	2.893.004	2.778.741	-114.263	-3,9%	-5,7%
March	6.491.356	5.468.953	-1.022.403	-15,8%	-12,9%	2.960.820	3.115.619	154.799	5,2%	-2,0%
April	5.804.166	5.337.080	-467.086	-8,0%	-11,7%	2.854.306	2.939.415	85.110	3,0%	-0,8%
May	6.465.448	5.833.544	-631.904	-9,8%	-11,3%	3.278.032	3.042.630	-235.402	-7,2%	-2,2%
June	5.648.116	5.268.769	-379.346	-6,7%	-10,5%	2.923.660	3.066.272	142.612	4,9%	-1,0%
July	6.228.813	5.296.454	-932.359	-15,0%	-11,2%	3.045.360	2.799.043	-246.316	-8,1%	-2,1%
August	5.810.036	4.783.098	-1.026.939	-17,7%	-12,0%	2.756.439	2.468.606	-287.833	-10,4%	-3,0%
September	5.200.343	4.934.313	-266.030	-5,1%	-11,3%	2.708.835	2.656.725	-52.110	-1,9%	-2,9%
October	5.359.901					2.940.906				
November	5.218.673					2.766.928				
December	5.896.467					3.212.775				
<b>Total</b>	<b>69.141.288</b>	<b>46.706.957</b>				<b>35.174.874</b>	<b>25.487.878</b>			

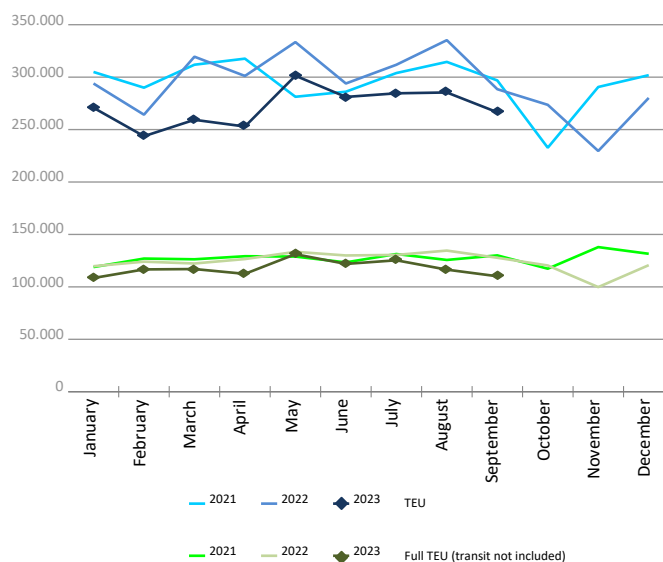
## Monthly evolution of traffic. TEU

Monthly evolution of traffic	Total TEU			%		Full TEU (transit not included)			%	
	2022	2023	Diff. 23-22	Monthly	Accumulated	2022	2023	Diff. 23-22	Monthly	Accumulated
January	293.936	270.814	-23.122	-7,9%	-7,9%	119.697	108.430	-11.268	-9,4%	-9,4%
February	264.194	243.683	-20.511	-7,8%	-7,8%	124.031	116.638	-7.393	-6,0%	-7,7%
March	319.486	259.311	-60.175	-18,8%	-11,8%	122.283	117.005	-5.278	-4,3%	-6,5%
April	301.120	252.903	-48.217	-16,0%	-12,9%	126.513	112.395	-14.117	-11,2%	-7,7%
May	333.402	301.350	-32.052	-9,6%	-12,2%	133.419	131.136	-2.283	-1,7%	-6,4%
June	293.952	281.135	-12.817	-4,4%	-10,9%	129.933	121.905	-8.029	-6,2%	-6,4%
July	311.805	284.578	-27.227	-8,7%	-10,6%	130.457	125.349	-5.108	-3,9%	-6,0%
August	335.260	285.384	-49.876	-14,9%	-11,2%	134.615	116.431	-18.184	-13,5%	-7,0%
September	288.515	266.501	-22.013	-7,6%	-10,8%	127.747	110.117	-17.630	-13,8%	-7,8%
October	273.587					120.390				
November	229.581					99.789				
December	280.201					120.698				
<b>Total</b>	<b>3.525.036</b>	<b>2.445.659</b>				<b>1.489.570</b>	<b>1.059.404</b>			

Goods (total tonnes)



Containers (total TEU)



# CONTAINER TRAFFIC

## TEU evolution

Full-unloaded foreign	Full TEU			%		Full-loaded foreign	Full TEU			%	
	2022	2023	Diff. 23-22	Monthly	Accumulated		2022	2023	Diff. 23-22	Monthly	Accumulated
January	48.476	49.138	662	1,4%	1,4%	January	64.009	51.046	-12.963	-20,3%	-20,3%
February	54.390	51.449	-2.941	-5,4%	-2,2%	February	61.530	56.050	-5.480	-8,9%	-14,7%
March	53.334	44.515	-8.819	-16,5%	-7,1%	March	61.139	60.775	-364	-0,6%	-10,1%
April	59.085	51.432	-7.653	-13,0%	-8,7%	April	58.086	51.390	-6.696	-11,5%	-10,4%
May	55.511	64.093	8.582	15,5%	-3,8%	May	70.010	56.511	-13.499	-19,3%	-12,4%
June	58.300	53.940	-4.361	-7,5%	-4,4%	June	63.144	57.195	-5.949	-9,4%	-11,9%
July	53.493	59.685	6.192	11,6%	-2,2%	July	67.435	54.824	-12.612	-18,7%	-12,9%
August	59.663	56.639	-3.024	-5,1%	-2,6%	August	66.589	50.089	-16.500	-24,8%	-14,5%
September	56.698	48.421	-8.277	-14,6%	-3,9%	September	61.784	50.712	-11.072	-17,9%	-14,8%
October	47.022					October	64.583				
November	36.823					November	54.097				
December	49.571					December	62.276				
<b>Total</b>	<b>632.363</b>	<b>479.309</b>				<b>Total</b>	<b>754.679</b>	<b>488.590</b>			

Full-unloaded domestic	Full TEU			%		Full-loaded domestic	Full TEU			%	
	2022	2023	Diff. 23-22	Monthly	Accumulated		2022	2023	Diff. 23-22	Monthly	Accumulated
January	1.733	1.702	-32	-1,8%	-1,8%	January	5.480	6.545	1.065	19,4%	19,4%
February	1.764	1.836	72	4,1%	1,2%	February	6.348	7.304	956	15,1%	17,1%
March	1.699	2.227	529	31,1%	10,9%	March	6.112	9.488	3.377	55,3%	30,1%
April	1.593	1.818	225	14,1%	11,7%	April	7.750	7.756	6	0,1%	21,0%
May	1.382	2.223	841	60,8%	20,0%	May	6.516	8.310	1.795	27,5%	22,4%
June	1.627	1.938	311	19,1%	19,9%	June	6.863	8.833	1.971	28,7%	23,5%
July	1.523	1.881	358	23,5%	20,3%	July	8.006	8.960	954	11,9%	21,5%
August	1.642	1.989	348	21,2%	20,4%	August	6.722	7.715	993	14,8%	20,7%
September	1.890	2.163	273	14,4%	19,7%	September	7.376	8.821	1.445	19,6%	20,5%
October	1.507					October	7.279				
November	1.772					November	7.097				
December	1.773					December	7.078				
<b>Total</b>	<b>19.903</b>	<b>17.775</b>				<b>Total</b>	<b>82.625</b>	<b>73.732</b>			

Full - Transit	Full TEU			%		Empty	Empty TEU			%	
	2022	2023	Diff. 23-22	Monthly	Accumulated		2022	2023	Diff. 23-22	Monthly	Accumulated
January	105.236	97.136	-8.100	-7,7%	-7,7%	January	69.003	65.249	-3.754	-5,4%	-5,4%
February	89.159	71.919	-17.240	-19,3%	-13,0%	February	51.004	55.126	4.123	8,1%	0,3%
March	136.336	83.590	-52.746	-38,7%	-23,6%	March	60.868	58.717	-2.151	-3,5%	-1,0%
April	129.299	83.957	-45.342	-35,1%	-26,8%	April	45.309	56.551	11.243	24,8%	4,2%
May	136.713	97.479	-39.234	-28,7%	-27,3%	May	63.271	72.735	9.465	15,0%	6,5%
June	108.465	84.533	-23.932	-22,1%	-26,5%	June	55.554	74.698	19.144	34,5%	11,0%
July	124.034	93.105	-30.929	-24,9%	-26,2%	July	57.315	66.125	8.810	15,4%	11,7%
August	131.159	83.800	-47.359	-36,1%	-27,6%	August	69.487	85.153	15.667	22,5%	13,3%
September	100.326	86.280	-14.046	-14,0%	-26,3%	September	60.442	70.105	9.663	16,0%	13,6%
October	93.355					October	59.843				
November	79.302					November	50.490				
December	86.856					December	72.648				
<b>Total</b>	<b>1.320.236</b>	<b>781.797</b>				<b>Total</b>	<b>715.230</b>	<b>604.458</b>			



# CONTAINER TRAFFIC

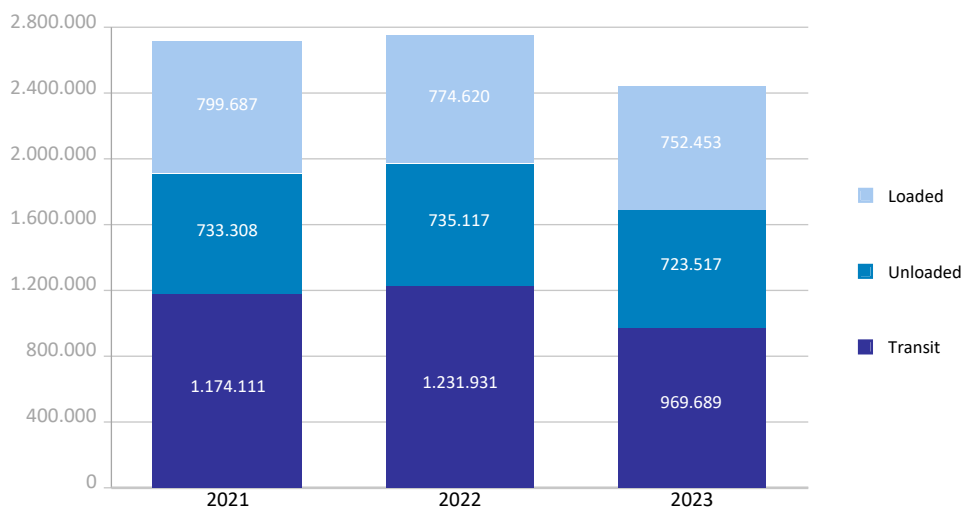
## TEU

Container traffic	Monthly accumulated 2022			Monthly accumulated 2023			%
	Domestic	Foreign	Total	Domestic	Foreign	Total	
<b>Total traffic</b>	<b>146.585</b>	<b>2.595.083</b>	<b>2.741.667</b>	<b>169.602</b>	<b>2.276.058</b>	<b>2.445.659</b>	<b>-10,8%</b>
<b>Unloaded</b>	<b>74.431</b>	<b>1.296.331</b>	<b>1.370.761</b>	<b>88.419</b>	<b>1.141.096</b>	<b>1.229.515</b>	<b>-10,3%</b>
Roll On-Roll Off	20.434	10.943	31.377	21.208	11.448	32.656	4,1%
Lift On-Lift Off	53.997	1.285.388	1.339.384	67.211	1.129.648	1.196.859	-10,6%
<b>Loaded</b>	<b>72.154</b>	<b>1.298.752</b>	<b>1.370.906</b>	<b>81.182</b>	<b>1.134.962</b>	<b>1.216.144</b>	<b>-11,3%</b>
Roll On-Roll Off	20.870	11.025	31.895	23.138	11.075	34.213	7,3%
Lift On-Lift Off	51.285	1.287.727	1.339.012	58.044	1.123.887	1.181.931	-11,7%

Breakdown by navigation and operation	Monthly accumulated 2022			Monthly accumulated 2023			%
	Domestic	Foreign	Total	Domestic	Foreign	Total	
<b>Loaded</b>	<b>71.997</b>	<b>702.623</b>	<b>774.620</b>	<b>81.059</b>	<b>671.394</b>	<b>752.453</b>	<b>-2,9%</b>
Full	61.171	573.723	634.894	73.732	488.590	562.321	-11,4%
Empty	10.826	128.900	139.726	7.328	182.805	190.132	36,1%
<b>Unloaded</b>	<b>72.808</b>	<b>662.309</b>	<b>735.117</b>	<b>85.656</b>	<b>637.861</b>	<b>723.517</b>	<b>-1,6%</b>
Full	14.851	498.948	513.799	17.775	479.309	497.083	-3,3%
Empty	57.957	163.361	221.318	67.882	158.552	226.434	2,3%
<b>Transit</b>	<b>1.780</b>	<b>1.230.151</b>	<b>1.231.931</b>	<b>2.886</b>	<b>966.803</b>	<b>969.689</b>	<b>-21,3%</b>
Full	24	1.060.700	1.060.724	40	781.757	781.797	-26,3%
Empty	1.756	169.452	171.207	2.846	185.047	187.893	9,7%

<b>Total traffic</b>	<b>146.585</b>	<b>2.595.083</b>	<b>2.741.667</b>	<b>169.602</b>	<b>2.276.058</b>	<b>2.445.659</b>	<b>-10,8%</b>
Full	76.046	2.133.371	2.209.417	91.546	1.749.655	1.841.201	-16,7%
Empty	70.539	461.712	532.251	78.055	526.403	604.458	13,6%
% Empty	48,1%	17,8%	<b>19,4%</b>	46,0%	23,1%	<b>24,7%</b>	
% Transit	1,2%	47,4%	<b>44,9%</b>	1,7%	42,5%	<b>39,6%</b>	

General cargo distribution by operation (TEU )

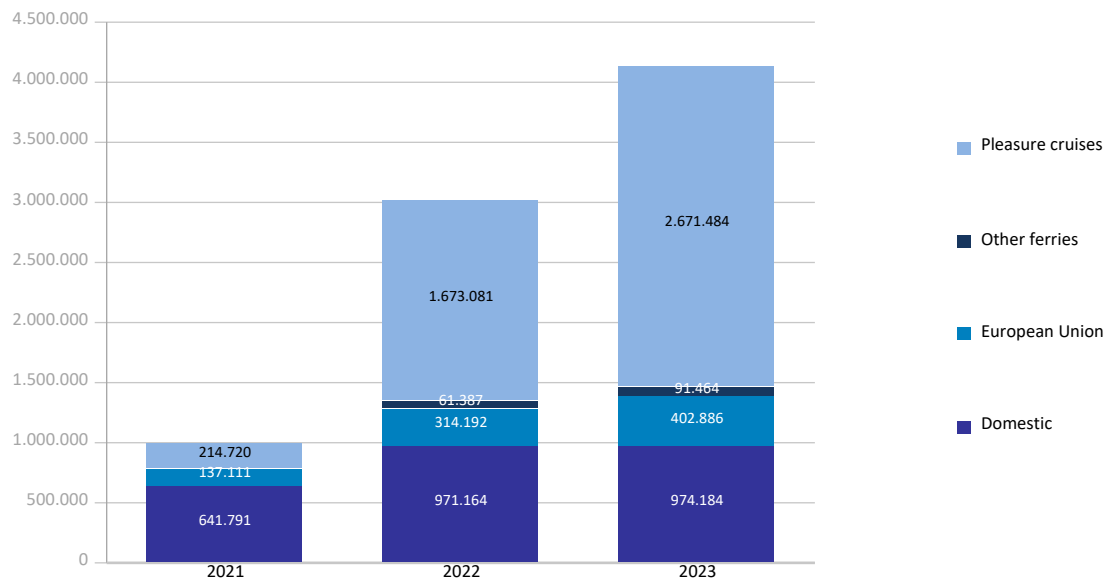


## PASSENGER TRAFFIC

Total passenger traffic (units)	Monthly accumulated				% 23-22 accum. August	% 23-22 accum. July
	2022	2023	Diff. 23-22	%		
<b>Total passengers</b>	<b>3.019.824</b>	<b>4.140.018</b>	<b>1.120.194</b>	<b>37,1%</b>	<b>40,4%</b>	<b>52,3%</b>
Embarkation	1.195.196	1.487.827	292.631	24,5%	26,8%	35,5%
Disembarkation	1.130.080	1.431.863	301.783	26,7%	29,6%	42,2%
Transit	694.548	1.220.328	525.780	75,7%	82,4%	95,5%
<b>Regular line ferries</b>	<b>1.346.743</b>	<b>1.468.534</b>	<b>121.791</b>	<b>9,0%</b>	<b>9,0%</b>	<b>15,1%</b>
Embarkation	700.109	755.477	55.368	7,9%	8,1%	12,9%
Disembarkation	646.634	713.057	66.423	10,3%	9,9%	18,0%
<b>Domestic</b>	971.164	974.184	3.020	0,3%	-0,1%	3,2%
Embarkation	508.234	509.272	1.038	0,2%	-0,1%	2,8%
Disembarkation	462.930	464.912	1.982	0,4%	-0,1%	3,8%
<b>European Union</b>	314.192	402.886	88.694	28,2%	29,8%	45,4%
Embarkation	158.538	199.990	41.452	26,1%	28,6%	41,8%
Disembarkation	155.654	202.896	47.242	30,4%	31,1%	49,5%
<b>Other ferries</b>	61.387	91.464	30.077	49,0%	49,1%	70,8%
Embarkation	33.337	46.215	12.878	38,6%	38,6%	43,0%
Disembarkation	28.050	45.249	17.199	61,3%	64,5%	153,0%
<b>Pleasure cruises</b>	<b>1.673.081</b>	<b>2.671.484</b>	<b>998.403</b>	<b>59,7%</b>	<b>68,3%</b>	<b>81,5%</b>
Embarkation	495.087	732.350	237.263	47,9%	56,8%	69,7%
Disembarkation	483.446	718.806	235.360	48,7%	58,9%	72,0%
Transit	694.548	1.220.328	525.780	75,7%	82,4%	95,5%

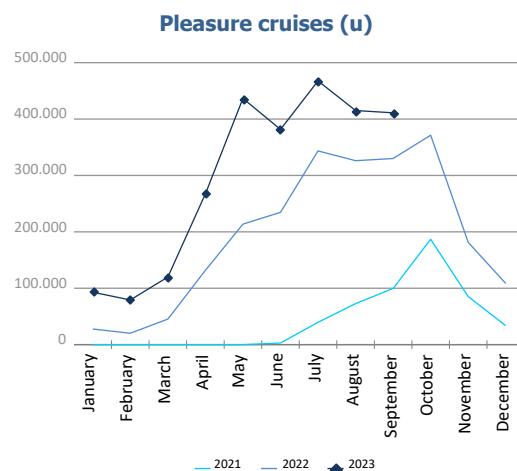
Total passenger calls (units)	Monthly accumulated				% 23-22 accum. August	% 23-22 accum. July
	2022	2023	Diff. 23-22	%		
<b>Total number of calls</b>	<b>3.060</b>	<b>3.110</b>	<b>50</b>	<b>1,6%</b>	<b>2,0%</b>	<b>2,2%</b>
<b>Regular Line ferries</b>	2.478	2.521	43	1,7%	2,1%	2,4%
<b>Pleasure cruises</b>	582	589	7	1,2%	1,6%	1,7%

Passenger traffic distribution (u)

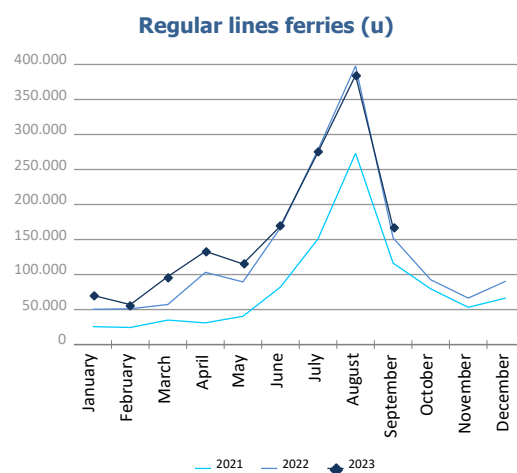


# PASSENGER CLASSIFICATION

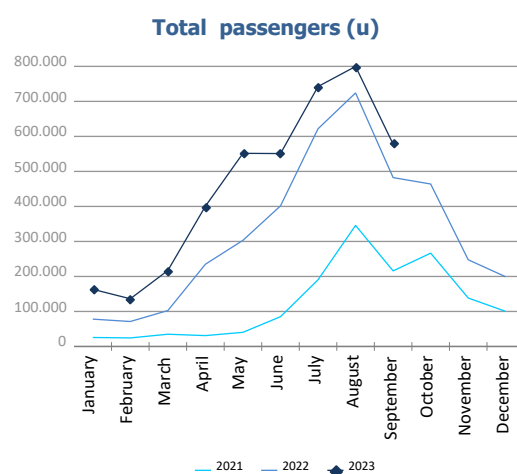
Monthly evolution of passenger traffic	Pleasure cruises			%	
	2022	2023	Diff. 23-22	Monthly	Accumulated
January	27.707	93.013	65.306	235,7%	235,7%
February	20.234	79.194	58.960	291,4%	259,2%
March	45.304	119.885	74.581	164,6%	213,3%
April	131.770	267.420	135.650	102,9%	148,7%
May	213.711	436.569	222.858	104,3%	127,0%
June	234.617	381.587	146.970	62,6%	104,6%
July	343.517	467.607	124.090	36,1%	81,5%
August	326.187	415.154	88.967	27,3%	68,3%
September	330.034	411.055	81.021	24,5%	59,7%
October	371.412				
November	181.318				
December	108.494				
<b>Total</b>	<b>2.334.305</b>	<b>2.671.484</b>			



Monthly evolution of passenger traffic	Regular lines ferries			%	
	2022	2023	Diff. 23-22	Monthly	Accumulated
January	50.352	70.262	19.910	39,5%	39,5%
February	51.078	57.059	5.981	11,7%	25,5%
March	57.261	97.166	39.905	69,7%	41,5%
April	103.159	133.201	30.042	29,1%	36,6%
May	89.473	115.112	25.639	28,7%	34,6%
June	166.930	169.419	2.489	1,5%	23,9%
July	278.213	274.776	-3.437	-1,2%	15,1%
August	397.960	384.652	-13.308	-3,3%	9,0%
September	152.317	166.887	14.570	9,6%	9,0%
October	92.657				
November	66.384				
December	90.483				
<b>Total</b>	<b>1.596.267</b>	<b>1.468.534</b>			



Monthly evolution of passenger traffic	Total passengers			%	
	2022	2023	Diff. 23-22	Monthly	Accumulated
January	78.059	163.275	85.216	109,2%	109,2%
February	71.312	136.253	64.941	91,1%	100,5%
March	102.565	217.051	114.486	111,6%	105,0%
April	234.929	400.621	165.692	70,5%	88,4%
May	303.184	551.681	248.497	82,0%	85,9%
June	401.547	551.006	149.459	37,2%	69,5%
July	621.730	742.383	120.653	19,4%	52,3%
August	724.147	799.806	75.659	10,4%	40,4%
September	482.351	577.942	95.591	19,8%	37,1%
October	464.069				
November	247.702				
December	198.977				
<b>Total</b>	<b>3.930.572</b>	<b>4.140.018</b>			

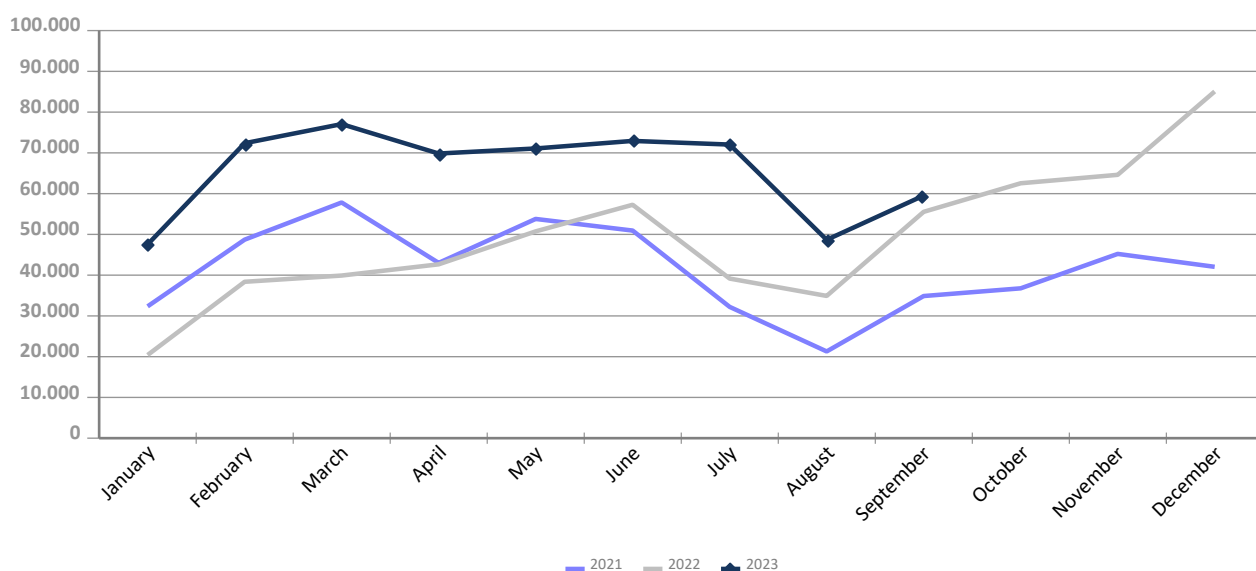


## AUTOMOBILE TRAFFIC

Total automobile traffic (units)	Monthly accumulated				% 23-22 accum. August	% 23-22 accum. July
	2022	2023	Diff. 23-22	%		
<b>Automobile traffic by navigation and operation</b>	<b>378.935</b>	<b>591.042</b>	<b>212.107</b>	<b>56,0%</b>	<b>64,4%</b>	<b>67,4%</b>
<b>Domestic</b>	<b>62.774</b>	<b>81.204</b>	<b>18.430</b>	<b>29,4%</b>	<b>36,2%</b>	<b>32,7%</b>
Loaded	55.155	71.821	16.666	30,2%	35,4%	31,9%
Unloaded	7.617	9.362	1.745	22,9%	43,8%	40,6%
Transit	2	21	19	950,0%	950,0%	950,0%
<b>Foreign</b>	<b>316.161</b>	<b>509.838</b>	<b>193.677</b>	<b>61,3%</b>	<b>70,1%</b>	<b>74,9%</b>
Loaded	173.718	242.613	68.895	39,7%	40,1%	39,0%
Unloaded	90.205	180.129	89.924	99,7%	130,6%	145,9%
Transit	52.238	87.096	34.858	66,7%	77,3%	92,4%

Monthly automobile traffic (u)	Monthly		Accumulated		%	
	2022	2023	2022	2023	Monthly	Accumulated
January	20.402	47.534	20.402	47.534	133,0%	133,0%
February	38.375	72.364	58.777	119.898	88,6%	104,0%
March	39.904	77.057	98.681	196.955	93,1%	99,6%
April	42.653	69.834	141.334	266.789	63,7%	88,8%
May	50.736	71.083	192.070	337.872	40,1%	75,9%
June	57.266	72.935	249.336	410.807	27,4%	64,8%
July	39.159	72.037	288.495	482.844	84,0%	67,4%
August	34.906	48.671	323.401	531.515	39,4%	64,4%
September	55.534	59.527	378.935	591.042	7,2%	56,0%
October	62.543		441.478			
November	64.615		506.093			
December	85.065		591.158			

Evolution of monthly automobile traffic (u)

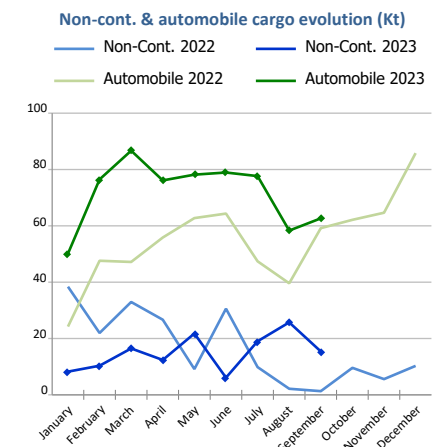
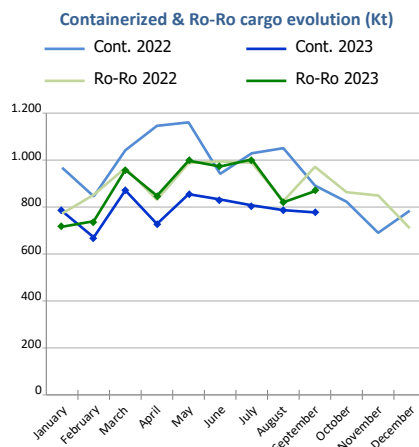
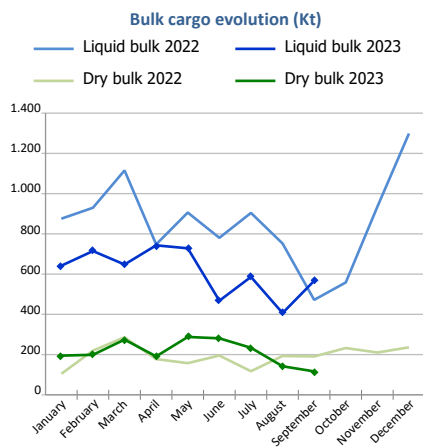
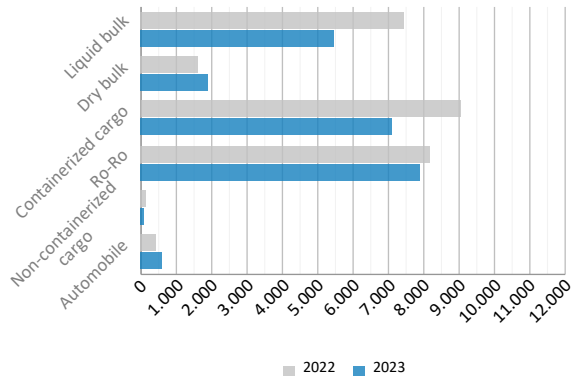


# SHORT SEA SHIPPING (SSS)

## SSS Goods classification

Goods classification. Tonnes	Monthly accumulated		%	% of total port traffic
	2022	2023		
Liquid bulk	7.482.190	5.501.950	-26,5%	57,6%
Dry bulk	1.640.555	1.919.479	17,0%	52,6%
Containerized cargo	9.075.294	7.111.885	-21,6%	29,2%
Ro-Ro	8.190.099	7.923.749	-3,3%	99,4%
Non-containerized cargo	173.013	135.463	-21,7%	47,2%
Automobile	448.180	645.191	44,0%	71,6%
<b>Total</b>	<b>27.009.331</b>	<b>23.237.717</b>	<b>-14,0%</b>	<b>49,8%</b>

SSS goods classification (Kt)



SSS General Cargo	Spanish Islands			SSS Remainder			TOTAL		
	2022	2023	%	2022	2023	%	2022	2023	%
<b>Containerized cargo</b>	555.263	675.963	21,7%	8.520.031	6.435.922	-24,5%	<b>9.075.294</b>	<b>7.111.885</b>	<b>-21,6%</b>
O/D	540.801	658.722	21,8%	2.497.158	2.398.723	-3,9%	<b>3.037.958</b>	<b>3.057.445</b>	<b>0,6%</b>
Transit	14.462	17.241	19,2%	6.022.874	4.037.198	-33,0%	<b>6.037.336</b>	<b>4.054.439</b>	<b>-32,8%</b>
<b>Ro-Ro</b>	4.533.232	4.557.677	0,5%	3.656.867	3.366.072	-8,0%	<b>8.190.099</b>	<b>7.923.749</b>	<b>-3,3%</b>
O/D	4.533.214	4.557.677	0,5%	3.384.627	3.184.148	-5,9%	<b>7.917.841</b>	<b>7.741.825</b>	<b>-2,2%</b>
Transit	18	0		272.239	181.924	-33,2%	<b>272.258</b>	<b>181.924</b>	<b>-33,2%</b>
<b>Non-cont. cargo</b>	5.302	2.378	-55,2%	167.711	133.085	-20,6%	<b>173.013</b>	<b>135.463</b>	<b>-21,7%</b>
O/D	5.284	2.378	-55,0%	163.657	129.452	-20,9%	<b>168.940</b>	<b>131.830</b>	<b>-22,0%</b>
Transit	18	0	-99,8%	4.055	3.633	-10,4%	<b>4.073</b>	<b>3.633</b>	<b>-10,8%</b>
<b>Automobile</b>	91.150	124.505	36,6%	357.030	520.686	45,8%	<b>448.180</b>	<b>645.191</b>	<b>44,0%</b>
O/D	91.001	124.231	36,5%	302.392	426.513	41,0%	<b>393.392</b>	<b>550.744</b>	<b>40,0%</b>
Transit	149	274	83,6%	54.639	94.173	72,4%	<b>54.788</b>	<b>94.448</b>	<b>72,4%</b>



### Short Sea Shipping (SSS):

The transport of cargo/goods and passengers between ports situated in the European Union or between these ports and non-European ports with a coastline in seas bordering Europe. This applies to cargo either originating from or is destined for these countries (in accordance with the European Shortsea Network).

### Motorways of the sea (MoS):

Short Sea Shipping services as an alternative to road transport and which fulfill the following criteria: minimum frequency of 3 calls per week and calling at a maximum of 3 different ports.

### General cargo:

Including containerized cargo, non-containerized cargo, Ro-Ro and automobiles.

### Containerized cargo:

Excluding container cargo by Ro-Ro.

### Non-containerized cargo:

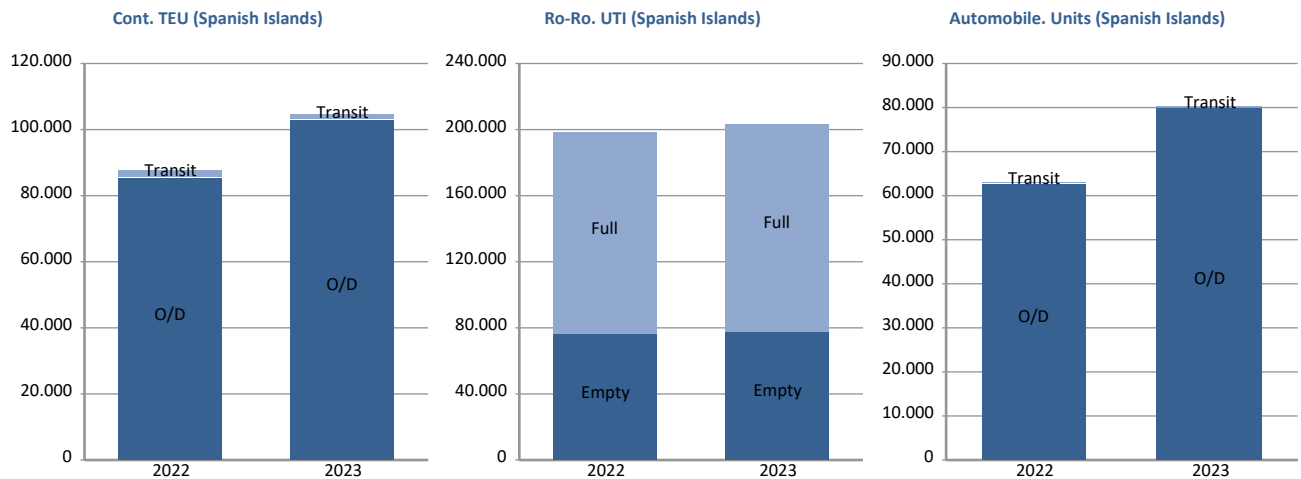
General non-containerized goods other than Ro-Ro and excluding automobiles.

### Ro-Ro:

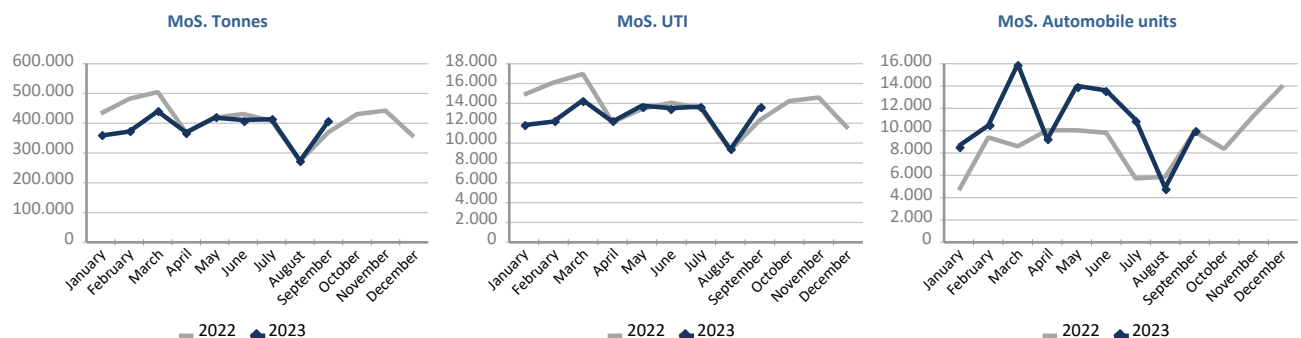
General cargo carried in UTI's. Excluding automobiles.

# SHORT SEA SHIPPING (SSS)

SSS General cargo	Spanish Islands			SSS Remainder			TOTAL		
	2022	2023	%	2022	2023	%	2022	2023	%
<b>Containerized cargo. TEU</b>	87.615	104.433	19,2%	773.632	613.992	-20,6%	<b>861.247</b>	<b>718.424</b>	<b>-16,6%</b>
<b>O/D</b>	85.309	102.790	20,5%	285.177	290.663	1,9%	<b>370.485</b>	<b>393.453</b>	<b>6,2%</b>
Full	51.643	63.781	23,5%	172.180	171.345	-0,5%	<b>223.822</b>	<b>235.126</b>	<b>5,1%</b>
Empty	33.666	39.010	15,9%	112.997	119.318	5,6%	<b>146.663</b>	<b>158.328</b>	<b>8,0%</b>
<b>Transit</b>	2.307	1.643	-28,8%	488.456	323.329	-33,8%	<b>490.762</b>	<b>324.971</b>	<b>-33,8%</b>
Full	1.040	1.419	36,4%	445.957	292.746	-34,4%	<b>446.997</b>	<b>294.165</b>	<b>-34,2%</b>
Empty	1.267	224	-82,3%	42.499	30.583	-28,0%	<b>43.766</b>	<b>30.807</b>	<b>-29,6%</b>
<b>Ro-Ro. UTI</b>	197.947	203.266	2,7%	124.664	115.905	-7,0%	<b>322.611</b>	<b>319.171</b>	<b>-1,1%</b>
Full	121.311	125.722	3,6%	115.107	106.028	-7,9%	<b>236.418</b>	<b>231.750</b>	<b>-2,0%</b>
Empty	76.636	77.544	1,2%	9.557	9.877	3,3%	<b>86.193</b>	<b>87.421</b>	<b>1,4%</b>
<b>Automobile units</b>	62.867	80.124	27,5%	246.546	358.211	45,3%	<b>309.413</b>	<b>438.335</b>	<b>41,7%</b>
<b>O/D</b>	62.776	79.927	27,3%	208.103	295.968	42,2%	<b>270.879</b>	<b>375.895</b>	<b>38,8%</b>
<b>Transit</b>	91	197	116,5%	38.443	62.243	61,9%	<b>38.534</b>	<b>62.440</b>	<b>62,0%</b>



Motorways of the Sea (MoS)	EU			Non-EU			TOTAL		
	2022	2023	%	2022	2023	%	2022	2023	%
<b>Tonnes</b>	3.642.900	3.449.159	-5,3%	45.906	14.844	-67,7%	<b>3.688.806</b>	<b>3.464.003</b>	<b>-6,1%</b>
Loaded	1.939.707	1.842.173	-5,0%	20.744	9.695	-53,3%	<b>1.960.451</b>	<b>1.851.868</b>	<b>-5,5%</b>
Unloaded	1.703.193	1.606.986	-5,6%	25.162	5.149	-79,5%	<b>1.728.355</b>	<b>1.612.135</b>	<b>-6,7%</b>
<b>UTI</b>	119.937	113.704	-5,2%	2.695	740	-72,5%	<b>122.632</b>	<b>114.444</b>	<b>-6,7%</b>
Loaded	61.902	58.440	-5,6%	1.402	502	-64,2%	<b>63.304</b>	<b>58.942</b>	<b>-6,9%</b>
Unloaded	58.035	55.264	-4,8%	1.293	238	-81,6%	<b>59.328</b>	<b>55.502</b>	<b>-6,4%</b>
<b>Automobile units</b>	73.443	96.464	31,3%	619	1.244	101,0%	<b>74.062</b>	<b>97.708</b>	<b>31,9%</b>
Loaded	70.357	90.242	28,3%	68	1.239	1722,1%	<b>70.425</b>	<b>91.481</b>	<b>29,9%</b>
Unloaded	3.086	6.222	101,6%	551	5	-99,1%	<b>3.637</b>	<b>6.227</b>	<b>71,2%</b>

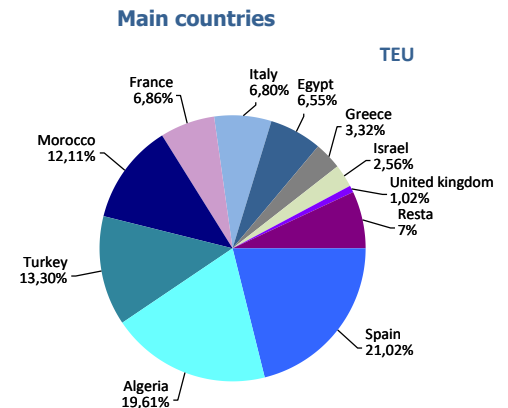


**UTI**: All those means of unitization, self-propelled or otherwise, that are directly or indirectly used as a means of land transport (e.g. trailers, platforms, trucks, freezer trucks, etc.) are considered as UTI. Containers are not considered to be included, except those that are handled by an equipment transport of the own terminal.

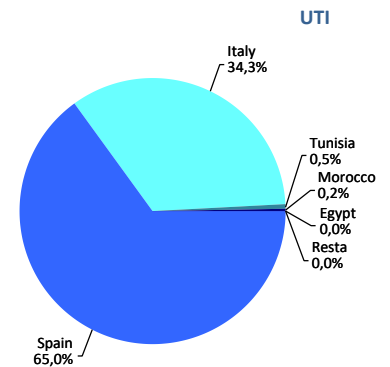
# SHORT SEA SHIPPING (SSS)

## SSS Ranking countries by mode of packaging

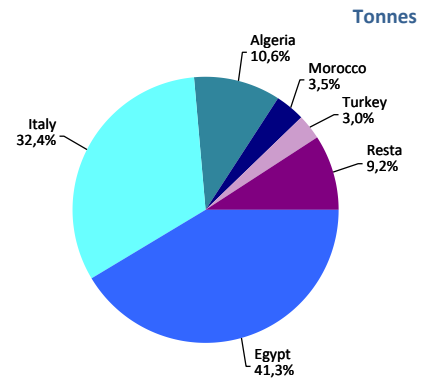
Containerized cargo. TEU	Monthly accumulated				% of total 2023
	2022	2023	Diff. 23-22	%	
<b>Total</b>	<b>861.247</b>	<b>718.424</b>	<b>-142.823</b>	<b>-16,6%</b>	<b>100%</b>
Spain	132.484	151.005	18.521	14,0%	21,0%
Algeria	152.439	140.855	-11.585	-7,6%	19,6%
Turkey	125.802	95.533	-30.269	-24,1%	13,3%
Morocco	68.740	86.977	18.237	26,5%	12,1%
France	79.839	49.287	-30.552	-38,3%	6,9%
Italy	138.435	48.825	-89.610	-64,7%	6,8%
Egypt	42.194	47.073	4.879	11,6%	6,6%
Greece	26.410	23.871	-2.539	-9,6%	3,3%
Israel	16.568	18.411	1.843	11,1%	2,6%
United kingdom	12.532	7.295	-5.238	-41,8%	1,0%
Remainder	65.806	49.295	-16.512	-25,1%	6,9%



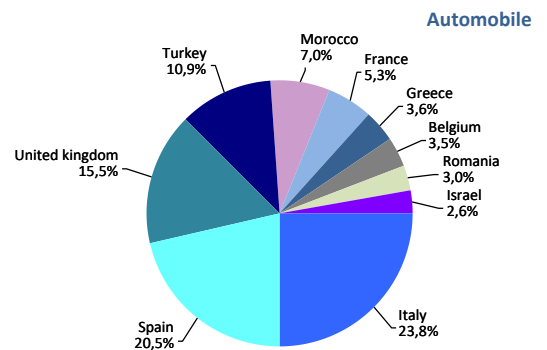
Ro-Ro. UTI	Monthly accumulated				% of total 2023
	2022	2023	Diff. 23-22	%	
<b>Total</b>	<b>322.611</b>	<b>319.171</b>	<b>-3.441</b>	<b>-1,1%</b>	<b>100%</b>
Spain	203.701	207.408	3.707	1,8%	65,0%
Italy	114.174	109.541	-4.633	-4,1%	34,3%
Tunisia	1.822	1.467	-356	-19,5%	0,5%
Morocco	2.899	741	-2.158	-74,4%	0,2%
Egypt	11	13	2	18,2%	0,0%
Remainder	4	1	-3	-75,0%	0,0%



Non-cont. cargo. Tonnes	Monthly accumulated				% of total 2023
	2022	2023	Diff. 23-22	%	
<b>Total</b>	<b>173.013</b>	<b>135.463</b>	<b>-37.550</b>	<b>-21,7%</b>	<b>100%</b>
Egypt	25.131	55.949	30.818	122,6%	41,3%
Italy	38.205	43.834	5.629	14,7%	32,4%
Algeria	5.137	14.394	9.257	180,2%	10,6%
Morocco	2.905	4.793	1.888	65,0%	3,5%
Turkey	59.345	4.088	-55.257	-93,1%	3,0%
Remainder	42.290	12.404	-29.886	-70,7%	9,2%



Automobile. Units	Monthly accumulated				% of total 2023
	2022	2023	Diff. 23-22	%	
<b>Total</b>	<b>309.413</b>	<b>438.335</b>	<b>128.922</b>	<b>41,7%</b>	<b>100%</b>
Italy	72.804	104.473	31.669	43,5%	23,8%
Spain	69.808	90.036	20.228	29,0%	20,5%
United kingdom	46.358	68.006	21.648	46,7%	15,5%
Turkey	29.035	47.569	18.534	63,8%	10,9%
Morocco	24.936	30.614	5.678	22,8%	7,0%
France	13.823	23.338	9.515	68,8%	5,3%
Greece	7.784	15.836	8.052	103,4%	3,6%
Belgium	2.892	15.384	12.492	432,0%	3,5%
Romania	13.158	13.176	18	0,1%	3,0%
Israel	7.558	11.519	3.961	52,4%	2,6%
Remainder	21.257	18.384	-2.873	-13,5%	4,2%



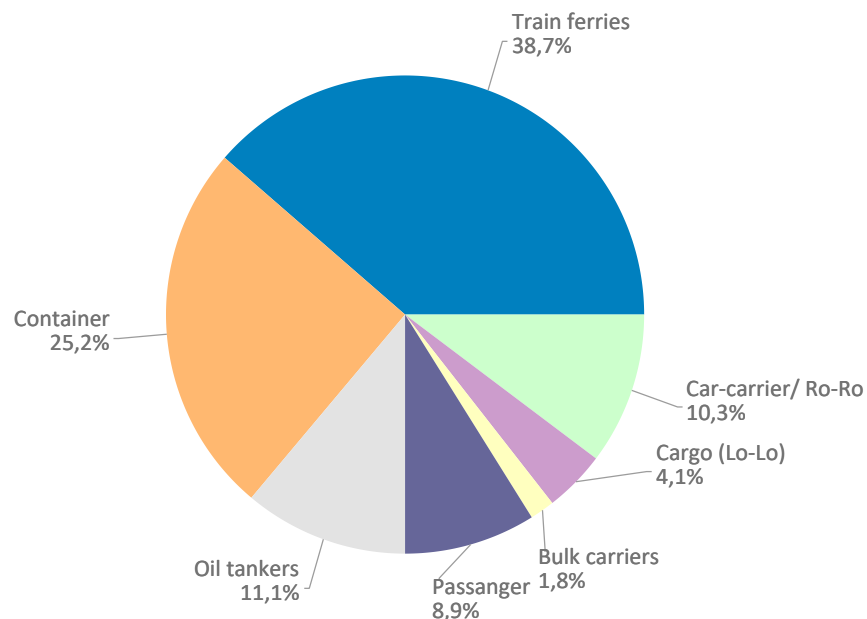
## VESSELS TRAFFIC

Vessels traffic	Monthly accumulated		
	2022	2023	%
Number of calls	6.520	6.638	1,8%
Tonnage	260.393.602	280.863.020	7,9%
Average tonnes	39.938	42.311	5,9%

Type of vessels	Monthly accumulated					
	2022		2023		%	
	Calls	GT	Calls	GT	Calls	GT
<b>Total</b>	<b>6.520</b>	<b>260.393.602</b>	<b>6.638</b>	<b>280.863.020</b>	<b>1,8%</b>	<b>7,9%</b>
Car-carrier/ Ro-Ro	690	34.276.030	682	36.261.858	-1,2%	5,8%
Cargo (Lo-Lo)	223	1.333.773	272	1.672.495	22,0%	25,4%
Refrigerators	1	14.868	0	0		
Bulk carriers	111	2.823.016	117	3.334.542	5,4%	18,1%
Passanger	582	67.034.038	589	73.350.161	1,2%	9,4%
Oil tankers	903	17.020.143	736	14.240.172	-18,5%	-16,3%
Container	1.558	66.070.147	1.672	75.428.056	7,3%	14,2%
Train ferries	2.452	71.821.587	2.570	76.575.736	4,8%	6,6%

Type of vessels (monthly accumulated 2023)	Domestic		Foreign	
	Calls	GT	Calls	GT
<b>Total</b>	<b>2.380</b>	<b>58.125.237</b>	<b>4.258</b>	<b>222.737.783</b>
Car-carrier/ Ro-Ro	43	934.915	639	35.326.943
Cargo (Lo-Lo)	21	56.531	251	1.615.964
Refrigerators			0	0
Bulk carriers	7	105.184	110	3.229.358
Passanger	77	5.261.752	512	68.088.409
Oil tankers	47	476.834	689	13.763.338
Container	221	2.036.985	1.451	73.391.071
Train ferries	1.964	49.253.036	606	27.322.700

Distribution by type of vessel

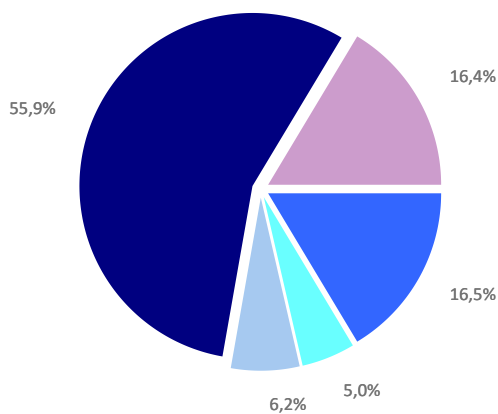




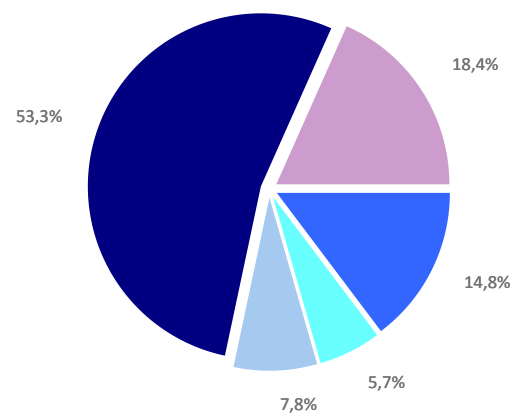
# GOODS TRAFFIC

Type of packaging and navigation	Monthly accumulated 2022			Monthly accumulated 2023			%
	Domestic	Foreign	Total	Domestic	Foreign	Total	
<b>Hydrocarbons</b>	<b>621.401</b>	<b>8.056.596</b>	<b>8.677.998</b>	<b>558.625</b>	<b>6.349.990</b>	<b>6.908.616</b>	<b>-20,4%</b>
Incoming	568.085	6.388.312	<b>6.956.396</b>	434.318	5.311.853	<b>5.746.171</b>	-17,4%
Outgoing	53.317	1.668.284	<b>1.721.601</b>	124.307	1.038.137	<b>1.162.444</b>	-32,5%
<b>Other liquid bulk</b>	<b>208.742</b>	<b>2.442.285</b>	<b>2.651.027</b>	<b>122.023</b>	<b>2.521.784</b>	<b>2.643.807</b>	<b>-0,3%</b>
Incoming	126.971	1.671.467	<b>1.798.438</b>	73.818	1.681.677	<b>1.755.495</b>	-2,4%
Outgoing	81.771	770.818	<b>852.589</b>	48.206	840.107	<b>888.313</b>	4,2%
<b>Dry bulk</b>	<b>163.397</b>	<b>3.100.382</b>	<b>3.263.779</b>	<b>99.173</b>	<b>3.548.310</b>	<b>3.647.483</b>	<b>11,8%</b>
Incoming	78.703	1.635.963	<b>1.714.666</b>	84.010	1.915.037	<b>1.999.048</b>	16,6%
Outgoing	84.693	1.464.419	<b>1.549.112</b>	15.163	1.633.273	<b>1.648.436</b>	6,4%
<b>Containerized cargo</b>	<b>905.860</b>	<b>28.513.904</b>	<b>29.419.764</b>	<b>1.065.872</b>	<b>23.832.229</b>	<b>24.898.101</b>	<b>-15,4%</b>
Incoming	266.761	13.238.792	<b>13.505.553</b>	314.360	11.487.579	<b>11.801.939</b>	-12,6%
Outgoing	639.100	15.275.111	<b>15.914.211</b>	751.513	12.344.649	<b>13.096.162</b>	-17,7%
<b>Non-containerized cargo</b>	<b>4.327.065</b>	<b>4.326.613</b>	<b>8.653.679</b>	<b>4.361.319</b>	<b>4.247.631</b>	<b>8.608.950</b>	<b>-0,5%</b>
Incoming	1.484.551	2.215.621	<b>3.700.172</b>	1.422.677	2.152.316	<b>3.574.994</b>	-3,4%
Outgoing	2.842.515	2.110.992	<b>4.953.507</b>	2.938.642	2.095.314	<b>5.033.956</b>	1,6%
<b>Total general cargo</b>	<b>5.232.926</b>	<b>32.840.517</b>	<b>38.073.443</b>	<b>5.427.191</b>	<b>28.079.860</b>	<b>33.507.051</b>	<b>-12,0%</b>
Incoming	1.751.312	15.454.414	<b>17.205.725</b>	1.737.037	13.639.896	<b>15.376.933</b>	-10,6%
Outgoing	3.481.614	17.386.103	<b>20.867.718</b>	3.690.154	14.439.964	<b>18.130.118</b>	-13,1%
<b>Total throughput (tonnes)</b>	<b>6.226.466</b>	<b>46.439.780</b>	<b>52.666.246</b>	<b>6.207.012</b>	<b>40.499.944</b>	<b>46.706.957</b>	<b>-11,3%</b>
Incoming	2.525.071	25.150.155	27.675.226	2.329.183	22.548.463	24.877.646	-10,1%
Outgoing	3.701.395	21.289.625	24.991.020	3.877.829	17.951.481	21.829.310	-12,7%
<b>Container traffic (TEU)</b>	<b>146.585</b>	<b>2.595.083</b>	<b>2.741.667</b>	<b>169.602</b>	<b>2.276.058</b>	<b>2.445.659</b>	<b>-10,8%</b>
Incoming	74.431	1.296.331	1.370.761	88.419	1.141.096	1.229.515	-10,3%
Outgoing	72.154	1.298.752	1.370.906	81.182	1.134.962	1.216.144	-11,3%

Distribution by type of packaging 2022

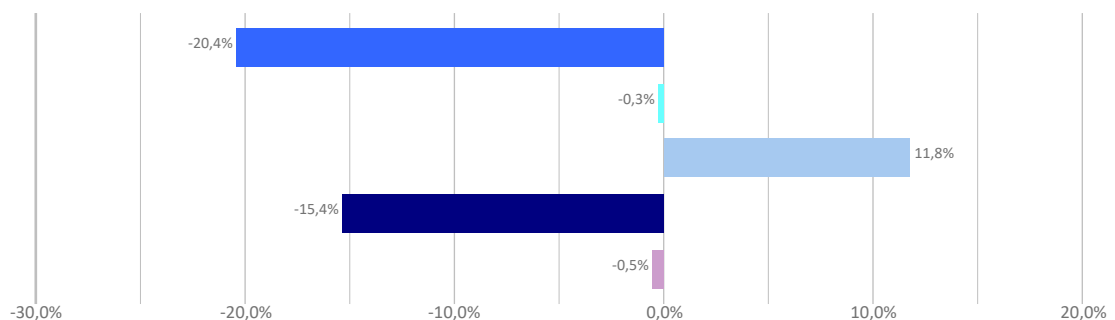


Distribution by type of packaging 2023



Hydrocarbons    Liquid bulk    Dry bulk    Containerized cargo    Non Containerized cargo

Annual growth by type of packaging



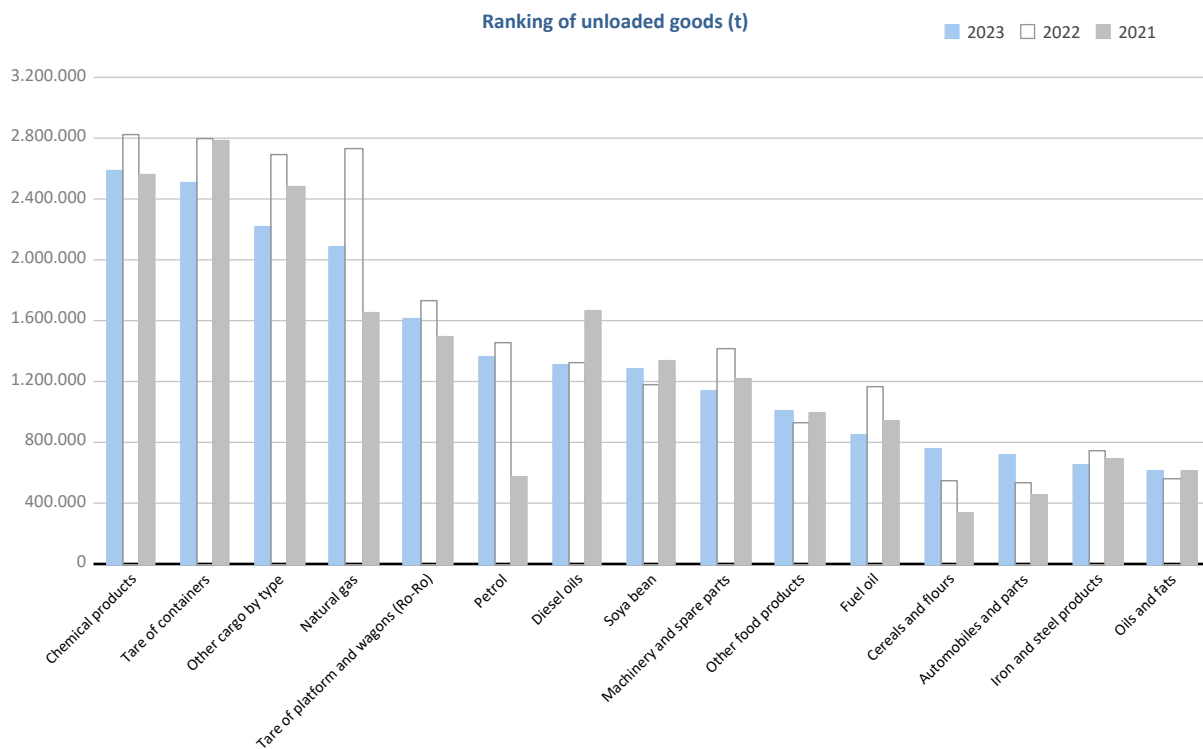
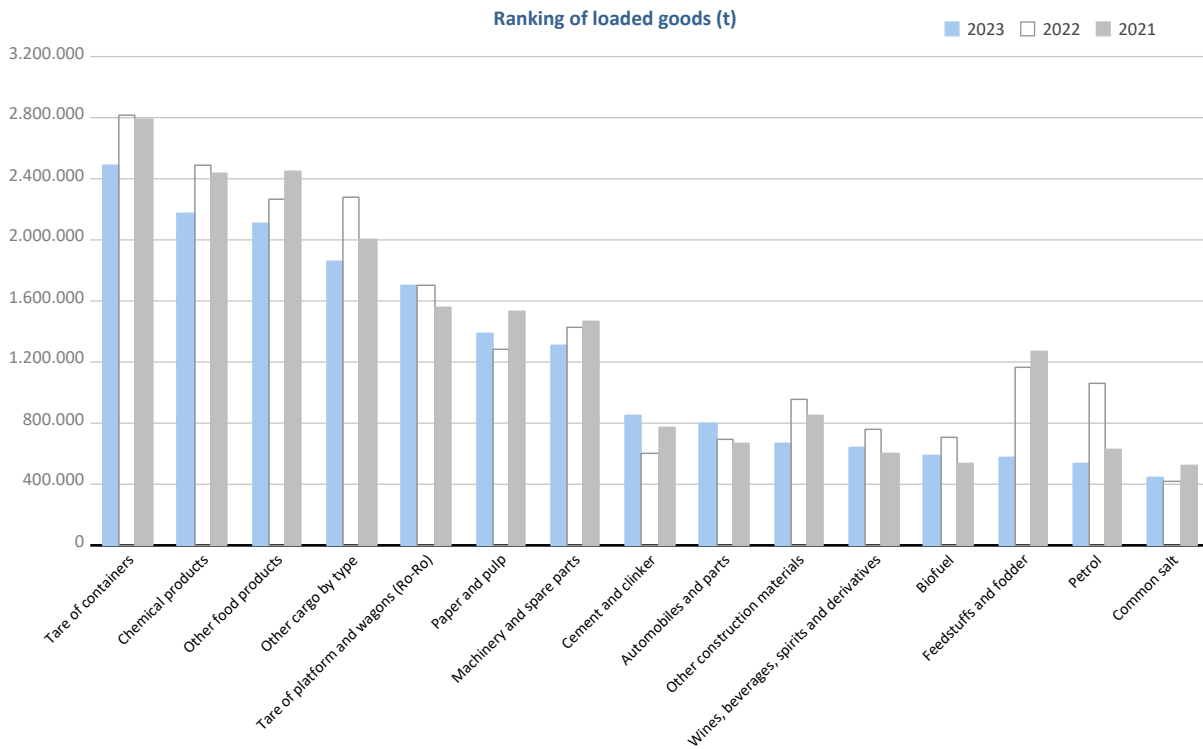
## GOODS TRAFFIC

Goods by classification 4.3.7.	Monthly accumulated				% of total accum. 2023
	2022	2023	Diff. 23-22	%	
<b>Tonnes</b>	<b>52.666.246</b>	<b>46.706.957</b>	<b>-5.959.289</b>	<b>-11,3%</b>	<b>100%</b>
<b>Energy</b>	<b>10.243.636</b>	<b>8.216.571</b>	<b>-2.027.065</b>	<b>-19,8%</b>	<b>17,6%</b>
Crude oil	172	33	-139	-80,6%	0,0%
Fuel oil	1.283.013	976.595	-306.418	-23,9%	2,1%
Diesel oils	1.670.975	1.597.231	-73.743	-4,4%	3,4%
Petrol	2.505.798	1.894.315	-611.483	-24,4%	4,1%
Other petroleum products	401.638	180.469	-221.169	-55,1%	0,4%
Petroleum fuel gasses	36.458	46.662	10.205	28,0%	0,1%
Coal	77.285	51.194	-26.091	-33,8%	0,1%
Natural gas	2.906.278	2.322.965	-583.313	-20,1%	5,0%
Biofuel	1.362.020	1.147.105	-214.915	-15,8%	2,5%
<b>Iron, steel and metallurgical products</b>	<b>2.329.476</b>	<b>2.054.372</b>	<b>-275.104</b>	<b>-11,8%</b>	<b>4,4%</b>
Iron ore	7.545	3.263	-4.282	-56,7%	0,0%
Other minerals and metallic waste	299.050	290.391	-8.659	-2,9%	0,6%
Scrap iron	391.622	392.521	899	0,2%	0,8%
Iron and steel products	1.160.883	982.799	-178.084	-15,3%	2,1%
Other metallurgical products	470.376	385.398	-84.978	-18,1%	0,8%
<b>Non-metallic minerals</b>	<b>878.081</b>	<b>768.701</b>	<b>-109.380</b>	<b>-12,5%</b>	<b>1,6%</b>
Common salt	453.875	454.023	149	0,0%	1,0%
Other non-metallic minerals	424.206	314.678	-109.529	-25,8%	0,7%
<b>Fertilizers</b>	<b>660.190</b>	<b>535.780</b>	<b>-124.409</b>	<b>-18,8%</b>	<b>1,1%</b>
Phosphates	497	83	-413	-83,2%	0,0%
Potashes	492.644	374.497	-118.147	-24,0%	0,8%
Natural/artificial fertilizer	167.049	161.200	-5.849	-3,5%	0,3%
<b>Chemicals</b>	<b>5.309.147</b>	<b>4.771.878</b>	<b>-537.270</b>	<b>-10,1%</b>	<b>10,2%</b>
Chemical products	5.309.147	4.771.878	-537.270	-10,1%	10,2%
<b>Construction materials</b>	<b>2.415.484</b>	<b>2.109.723</b>	<b>-305.761</b>	<b>-12,7%</b>	<b>4,5%</b>
Asphalt	4.512	6.139	1.628	36,1%	0,0%
Cement and clinker	675.266	890.726	215.460	31,9%	1,9%
Other construction materials	1.735.707	1.212.858	-522.849	-30,1%	2,6%
<b>Agriculture, livestock and food</b>	<b>10.449.972</b>	<b>9.580.608</b>	<b>-869.364</b>	<b>-8,3%</b>	<b>20,5%</b>
Cereals and flours	678.356	863.965	185.609	27,4%	1,8%
Soya bean	1.311.310	1.452.336	141.025	10,8%	3,1%
Fruits, vegetables, pulses	481.095	388.539	-92.556	-19,2%	0,8%
Wines, beverages, spirits and derivatives	944.668	745.325	-199.342	-21,1%	1,6%
Canned goods	249.133	256.739	7.606	3,1%	0,5%
Tobacco, coffee, cocoa	754.325	593.887	-160.439	-21,3%	1,3%
Oils and fats	946.365	943.941	-2.424	-0,3%	2,0%
Other food products	3.190.545	3.118.651	-71.894	-2,3%	6,7%
Frozen fish	548.899	517.302	-31.598	-5,8%	1,1%
Feedstuffs and fodder	1.345.275	699.924	-645.351	-48,0%	1,5%
<b>Other cargo</b>	<b>10.102.973</b>	<b>8.823.638</b>	<b>-1.279.335</b>	<b>-12,7%</b>	<b>18,9%</b>
Timber	408.724	318.095	-90.630	-22,2%	0,7%
Paper and pulp	1.884.475	1.971.225	86.750	4,6%	4,2%
Machinery and spare parts	2.845.422	2.449.963	-395.460	-13,9%	5,2%
Other cargo by type	4.964.351	4.084.356	-879.995	-17,7%	8,7%
<b>Vehicles and transport parts</b>	<b>10.277.286</b>	<b>9.845.686</b>	<b>-431.600</b>	<b>-4,2%</b>	<b>21,1%</b>
Automobiles and parts	1.218.937	1.520.708	301.771	24,8%	3,3%
Tare of platform and wagons (Ro-Ro)	3.441.884	3.325.199	-116.685	-3,4%	7,1%
Tare of containers	5.616.466	4.999.779	-616.687	-11,0%	10,7%

# GOODS TRAFFIC

## Goods by classification 4.3.7.

### Ranking of goods (tonnes)

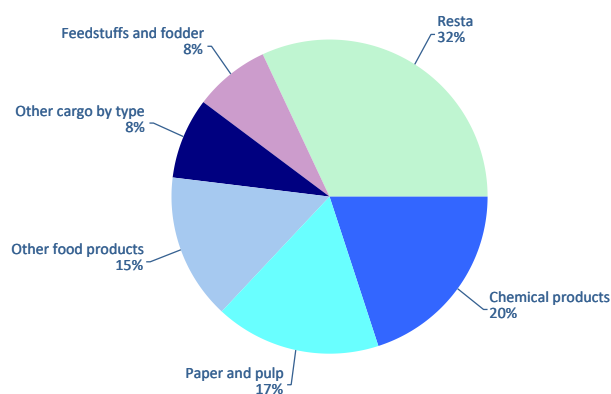


## GOODS TRAFFIC

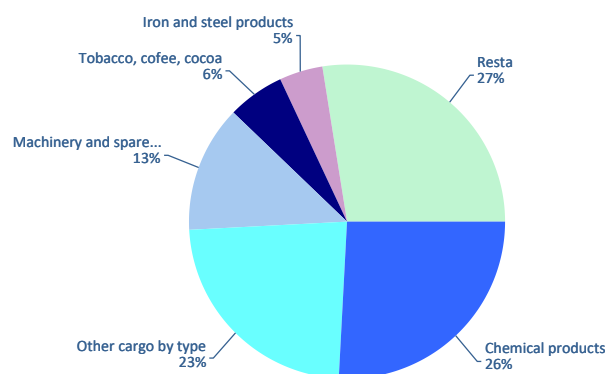
### Containerized goods by classification 4.3.7. (Tares & transits not included)

Containerized goods classification	Loaded			Unloaded			Total monthly accumulated		
	2022	2023	%	2022	2023	%	2022	2023	%
<b>Total tonnes (tares &amp; transits not included)</b>	<b>6.845.533</b>	<b>5.828.957</b>	<b>-14,9%</b>	<b>4.554.766</b>	<b>4.448.788</b>	<b>-2,3%</b>	<b>11.400.299</b>	<b>10.277.746</b>	<b>-9,8%</b>
Chemical products	1.421.077	1.161.849	-18,2%	1.036.655	1.150.694	11,0%	2.457.733	2.312.543	-5,9%
Other cargo by type	531.594	484.145	-8,9%	1.167.132	1.032.172	-11,6%	1.698.727	1.516.317	-10,7%
Paper and pulp	898.498	990.363	10,2%	141.263	128.432	-9,1%	1.039.761	1.118.794	7,6%
Other food products	1.084.409	883.753	-18,5%	60.955	79.772	30,9%	1.145.364	963.525	-15,9%
Machinery and spare parts	361.906	350.280	-3,2%	720.573	580.943	-19,4%	1.082.480	931.223	-14,0%
Feedstuffs and fodder	931.132	451.012	-51,6%	26.675	40.294	51,1%	957.807	491.306	-48,7%
Other construction materials	267.963	197.908	-26,1%	173.902	170.332	-2,1%	441.865	368.241	-16,7%
Wines, beverages, spirits and derivatives	305.439	308.343	1,0%	39.684	29.388	-25,9%	345.124	337.731	-2,1%
Iron and steel products	114.586	128.400	12,1%	242.204	203.411	-16,0%	356.790	331.811	-7,0%
Tobacco, coffee, cocoa	64.804	58.556	-9,6%	271.847	258.459	-4,9%	336.651	317.015	-5,8%
Automobiles and parts	102.655	102.198	-0,4%	123.672	159.306	28,8%	226.327	261.504	15,5%
Other metallurgical products	59.927	65.421	9,2%	145.715	128.566	-11,8%	205.642	193.987	-5,7%
Other minerals and metallic waste	129.429	132.135	2,1%	21.838	20.375	-6,7%	151.267	152.510	0,8%
Other non-metallic minerals	88.010	84.701	-3,8%	58.900	66.715	13,3%	146.910	151.416	3,1%
Oils and fats	131.057	104.112	-20,6%	29.352	32.643	11,2%	160.409	136.755	-14,7%
Fruits, vegetables, pulses	33.043	25.194	-23,8%	86.433	108.552	25,6%	119.476	133.745	11,9%
Canned goods	56.924	53.723	-5,6%	46.064	72.943	58,4%	102.989	126.666	23,0%
Biofuel	84.470	72.383	-14,3%	23.079	19.773	-14,3%	107.549	92.156	-14,3%
Natural/artificial fertilizer	39.926	31.697	-20,6%	23.247	38.321	64,8%	63.173	70.018	10,8%
Cereals and flours	28.281	42.694	51,0%	14.463	24.444	69,0%	42.744	67.138	57,1%
Scrap iron	16.388	19.300	17,8%	14.609	16.961	16,1%	30.997	36.262	17,0%
Frozen fish	6.725	5.136	-23,6%	37.735	29.727	-21,2%	44.459	34.863	-21,6%
Timber	16.077	9.011	-44,0%	15.375	18.028	17,3%	31.452	27.039	-14,0%
Other petroleum products	17.872	14.785	-17,3%	11.023	10.932	-0,8%	28.895	25.717	-11,0%
Common salt	24.399	22.436	-8,0%	2.038	1.778	-12,8%	26.437	24.214	-8,4%
Coal	1.881	1.775	-5,6%	13.114	19.809	51,1%	14.994	21.584	44,0%
Cement and clinker	13.194	10.542	-20,1%	2	51	2195,8%	13.196	10.593	-19,7%
Fuel oil	7.424	5.518	-25,7%	2.499	3.071	22,9%	9.922	8.589	-13,4%
Petroleum fuel gasses	2.149	6.306	193,4%	126	765	505,4%	2.276	7.070	210,7%
Asphalt	3.578	4.564	27,6%	15	16	6,9%	3.593	4.580	27,5%
Potashes	206	104	-49,2%	1.802	1.256	-30,3%	2.007	1.360	-32,2%
Soya bean	33	3	-90,4%	2.180	509	-76,7%	2.213	512	-76,9%
Diesel oils	0	464		25	0	-98,6%	25	465	1739,3%
Iron ore	117	25	-79,1%	338	312	-7,6%	455	337	-26,1%
Phosphates	234	83	-64,3%	75	0		308	83	-73,0%
Petrol	111	25	-77,6%	156	16	-89,7%	268	41	-84,7%
Crude oil	9	11	24,4%	0	22		9	33	265,4%
Natural gas	4	2	-50,9%	0	0		4	2	-50,9%

Distribution of main goods  
Loaded 2023



Distribution of main goods  
Unloaded 2023

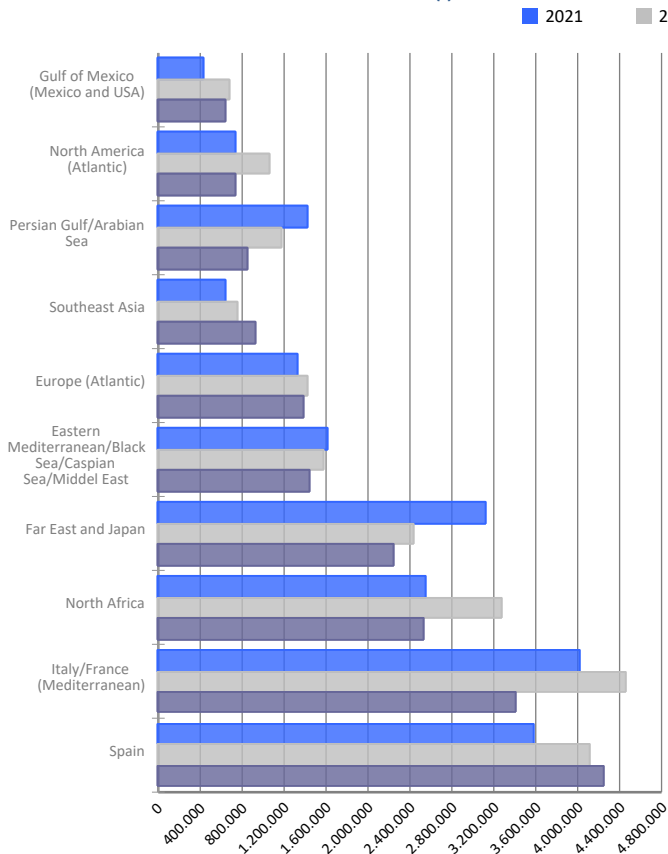


# MARITIME TRAFFIC BY ORIGIN/DESTINATION

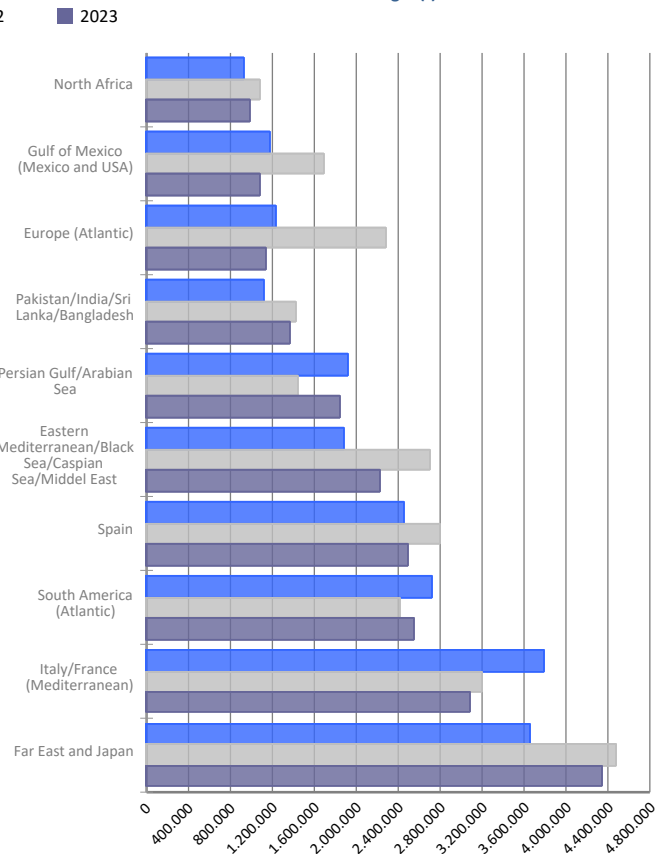
## Geographical areas. Tonnes

Geographical areas	Monthly accumulated				% of total accum. 2023
	2022	2023	Diff. 23-22	%	
<b>Tonnes</b>	<b>52.666.246</b>	<b>46.706.957</b>	<b>-5.959.289</b>	<b>-11,3%</b>	<b>100%</b>
Spain	6.903.460	6.737.464	-165.995	-2,4%	14,4%
Far East and Japan	6.902.513	6.588.578	-313.935	-4,5%	14,1%
Italy/France (Mediterranean)	7.650.480	6.485.836	-1.164.644	-15,2%	13,9%
Eastern Mediterranean/Black Sea/Caspian Sea/Middel	4.278.807	3.660.753	-618.053	-14,4%	7,8%
North Africa	4.354.892	3.520.266	-834.626	-19,2%	7,5%
South America (Atlantic)	3.107.258	2.929.440	-177.818	-5,7%	6,3%
Persian Gulf/Arabian Sea	2.629.176	2.698.020	68.844	2,6%	5,8%
Europe (Atlantic)	3.718.611	2.535.311	-1.183.300	-31,8%	5,4%
Pakistan/India/Sri Lanka/Bangladesh	2.093.965	1.993.835	-100.130	-4,8%	4,3%
Southeast Asia	1.763.753	1.868.873	105.120	6,0%	4,0%
Gulf of Mexico (Mexico and USA)	2.371.988	1.710.456	-661.531	-27,9%	3,7%
West Africa	1.317.302	1.128.685	-188.617	-14,3%	2,4%
North America (Atlantic)	1.303.140	1.033.097	-270.043	-20,7%	2,2%
Central America and Caribbean	954.960	881.698	-73.262	-7,7%	1,9%
Canada (Atlantic) and Great Lakes	1.014.113	806.923	-207.190	-20,4%	1,7%
Red Sea	721.949	660.693	-61.256	-8,5%	1,4%
South America (Pacific)	444.363	452.993	8.630	1,9%	1,0%
Unknown area (Tare of empty containers)	329.217	395.898	66.681	20,3%	0,8%
South-Eastern Africa/Indian Ocean	476.663	376.459	-100.205	-21,0%	0,8%
Australia, New Zealand/Pacific Islands	196.251	163.582	-32.669	-16,6%	0,4%
North America (Pacific)	133.384	78.097	-55.287	-41,4%	0,2%

Main areas of destination (t)



Main areas of origin (t)

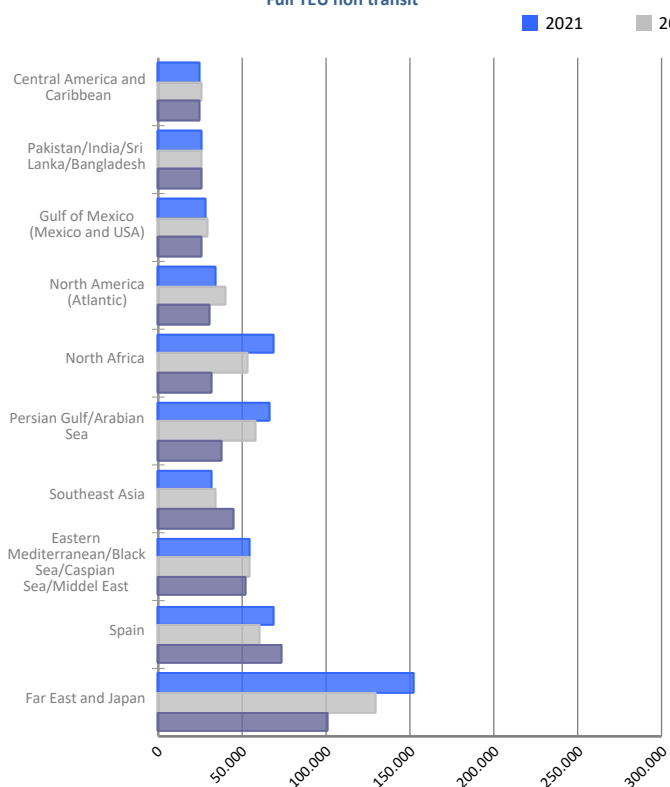


# MARITIME TRAFFIC BY ORIGIN/DESTINATION

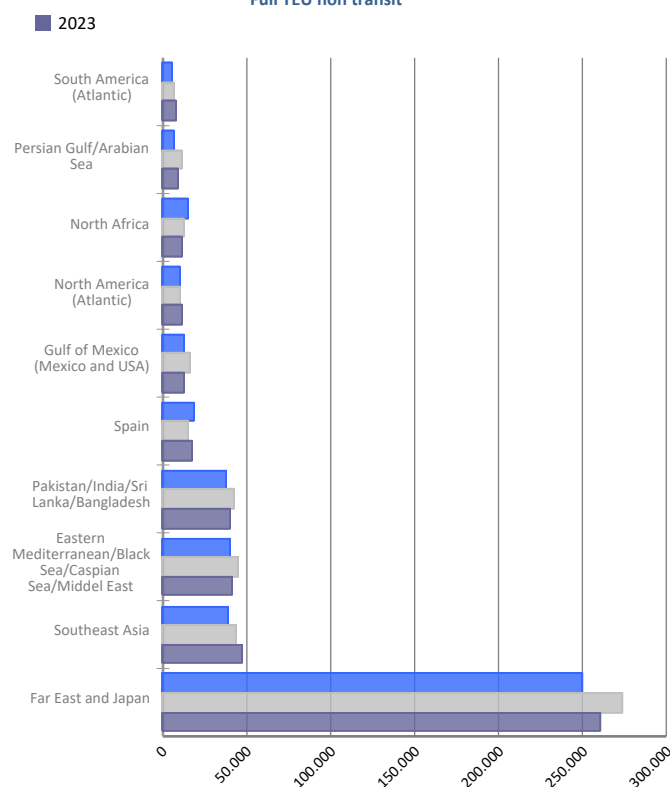
## Geographical areas. Full TEU non transit

Geographical areas	Monthly accumulated				% of total accum. 2023
	2022	2023	Diff. 23-22	%	
<b>Full TEU non transit</b>	<b>1.148.693</b>	<b>1.059.404</b>	<b>-89.289</b>	<b>-7,8%</b>	<b>100%</b>
Far East and Japan	403.871	361.953	-41.919	-10,4%	34,2%
Eastern Mediterranean/Black Sea/Caspian Sea/Middel	99.402	93.058	-6.345	-6,4%	8,8%
Southeast Asia	77.762	91.665	13.904	17,9%	8,7%
Spain	75.767	91.527	15.760	20,8%	8,6%
Pakistan/India/Sri Lanka/Bangladesh	67.796	65.619	-2.177	-3,2%	6,2%
Persian Gulf/Arabian Sea	69.413	46.288	-23.125	-33,3%	4,4%
North Africa	65.889	42.777	-23.112	-35,1%	4,0%
North America (Atlantic)	50.424	42.132	-8.292	-16,4%	4,0%
Gulf of Mexico (Mexico and USA)	45.037	38.936	-6.101	-13,5%	3,7%
Central America and Caribbean	30.876	30.637	-239	-0,8%	2,9%
South America (Atlantic)	28.279	26.455	-1.825	-6,5%	2,5%
South America (Pacific)	26.076	23.617	-2.459	-9,4%	2,2%
Red Sea	22.141	21.795	-347	-1,6%	2,1%
West Africa	22.242	21.514	-729	-3,3%	2,0%
South-Eastern Africa/Indian Ocean	21.236	18.866	-2.370	-11,2%	1,8%
Italy/France (Mediterranean)	8.871	15.599	6.728	75,8%	1,5%
Canada (Atlantic) and Great Lakes	11.635	9.826	-1.809	-15,5%	0,9%
Australia, New Zealand/Pacific Islands	9.796	8.748	-1.048	-10,7%	0,8%
North America (Pacific)	6.213	4.947	-1.266	-20,4%	0,5%
Europe (Atlantic)	5.969	3.449	-2.520	-42,2%	0,3%

Main areas of destination  
Full TEU non transit



Main areas of origin  
Full TEU non transit



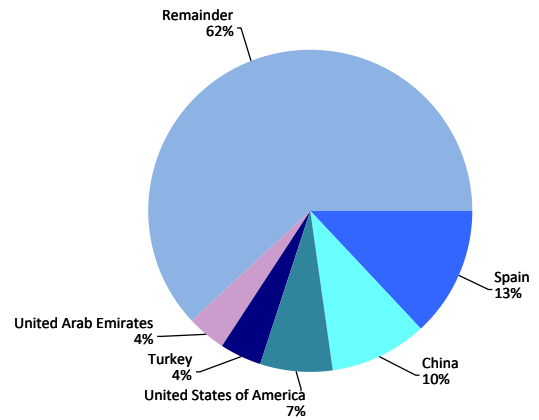
Note: From August 2014, the containerized cargo with origin or destination in Barcelona excludes maritime transit traffic and empty containers.

# MARITIME TRAFFIC BY ORIGIN/DESTINATION

## Ranking countries. Full TEU non transit

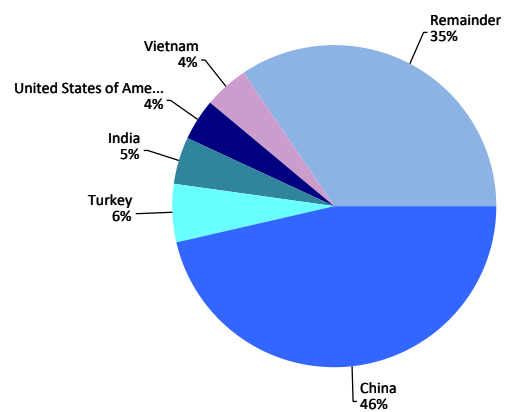
Loaded	Full TEU	% 23-22	% a/packaging
Spain	73.746	21,1%	13,1%
China	54.952	-19,9%	9,8%
United States of America	39.454	-24,1%	7,0%
Turkey	23.641	-13,3%	4,2%
United Arab Emirates	22.409	-36,3%	4,0%
Mexico	22.053	-5,7%	3,9%
India	21.669	9,5%	3,9%
Saudi Arabia	18.479	-19,8%	3,3%
Japan	18.285	-15,3%	3,3%
Morocco	16.148	-1,3%	2,9%
Malaysia	12.646	56,7%	2,2%
Korea (South)	12.394	-36,0%	2,2%
Indonesia	10.839	32,0%	1,9%
South Africa	10.746	-14,3%	1,9%
Vietnam	10.442	63,0%	1,9%
Remainder	194.419	-16,3%	34,6%
<b>TOTAL</b>	<b>562.321</b>	<b>-11,4%</b>	<b>100%</b>

Main countries. Loaded



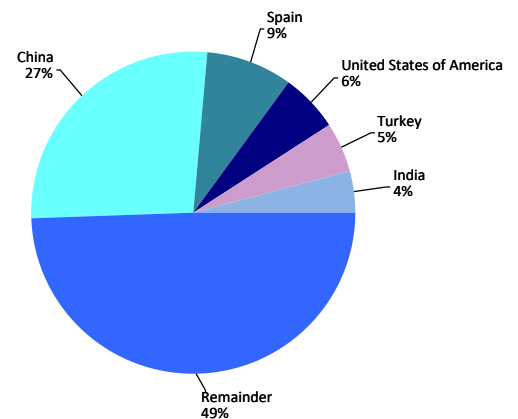
Unloaded	Full TEU	% 23-22	% a/packaging
China	231.106	-6,5%	46,5%
Turkey	28.884	-10,3%	5,8%
India	22.619	-6,3%	4,6%
United States of America	21.814	-3,2%	4,4%
Vietnam	20.948	13,3%	4,2%
Korea (South)	18.048	46,0%	3,6%
Spain	17.782	19,7%	3,6%
Bangladesh	10.403	1,0%	2,1%
Egypt	8.455	1,3%	1,7%
Saudi Arabia	7.939	-19,6%	1,6%
Greece	6.624	5,2%	1,3%
Indonesia	6.555	-5,0%	1,3%
Pakistan	6.059	-11,1%	1,2%
Thailand	5.645	2,6%	1,1%
Brazil	5.586	15,0%	1,1%
Remainder	78.619	-5,4%	15,8%
<b>TOTAL</b>	<b>497.083</b>	<b>-3,3%</b>	<b>100%</b>

Main countries. Unloaded



Total	Full TEU	% 23-22	% a/packaging
China	286.058	-9,4%	27,0%
Spain	91.527	20,8%	8,6%
United States of America	61.268	-17,8%	5,8%
Turkey	52.525	-11,7%	5,0%
India	44.288	0,8%	4,2%
Vietnam	31.390	26,1%	3,0%
Korea (South)	30.442	-4,0%	2,9%
Mexico	27.142	-9,7%	2,6%
Saudi Arabia	26.418	-19,7%	2,5%
United Arab Emirates	24.937	-34,4%	2,4%
Japan	23.562	-11,9%	2,2%
Morocco	17.895	-2,2%	1,7%
Indonesia	17.393	15,1%	1,6%
Egypt	17.188	-7,5%	1,6%
Greece	16.043	1,5%	1,5%
Remainder	291.329	-10,9%	27,5%
<b>TOTAL</b>	<b>1.059.404</b>	<b>-7,8%</b>	<b>100%</b>

Main countries. Total



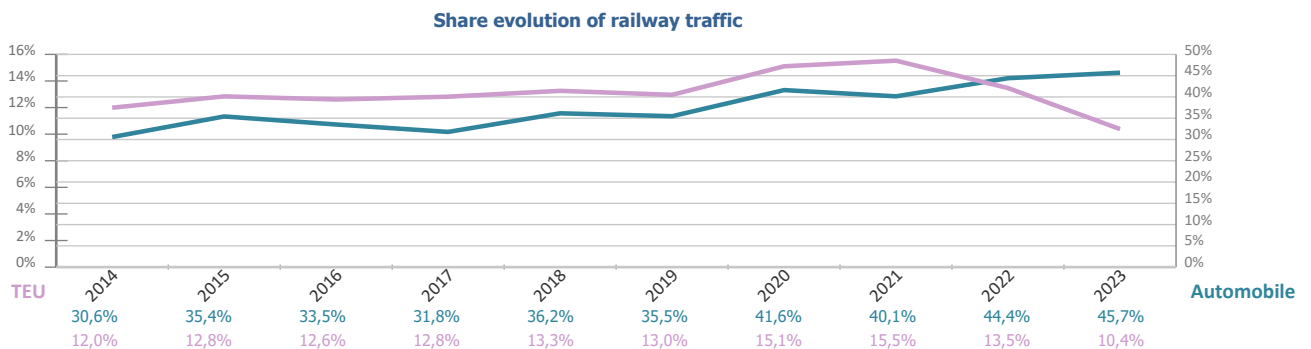
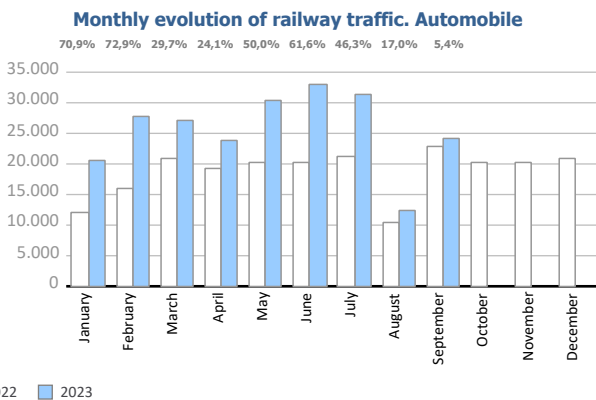
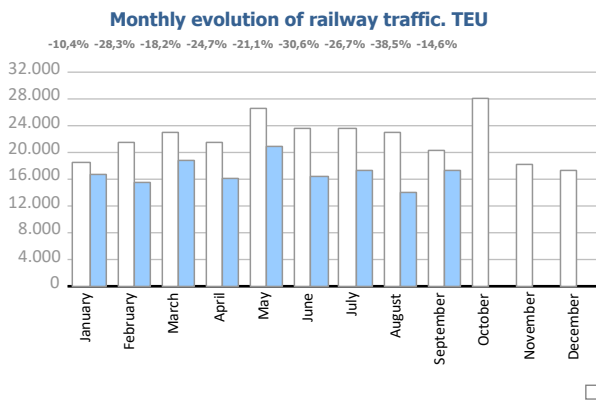
# RAILWAY TRAFFIC

## Monthly evolution of railway traffic. TEU

Monthly evolution of railway traffic	TEU 2022			TEU 2023			%		% of total port traffic 2023
	Loaded	Unloaded	Total	Loaded	Unloaded	Total	Monthly	Accumulated	
January	9.292	9.346	<b>18.638</b>	7.711	8.992	<b>16.703</b>	-10,4%	-10,4%	10,8%
February	11.086	10.377	<b>21.463</b>	6.537	8.861	<b>15.398</b>	-28,3%	-19,9%	10,1%
March	11.635	11.369	<b>23.004</b>	8.523	10.303	<b>18.826</b>	-18,2%	-19,3%	11,4%
April	11.441	10.015	<b>21.456</b>	6.796	9.358	<b>16.154</b>	-24,7%	-20,7%	10,7%
May	13.313	13.226	<b>26.539</b>	9.619	11.317	<b>20.936</b>	-21,1%	-20,8%	11,8%
June	11.659	11.823	<b>23.482</b>	6.787	9.510	<b>16.297</b>	-30,6%	-22,5%	9,4%
July	11.751	11.991	<b>23.742</b>	6.980	10.415	<b>17.395</b>	-26,7%	-23,1%	10,1%
August	11.481	11.402	<b>22.883</b>	5.378	8.693	<b>14.071</b>	-38,5%	-25,1%	8,5%
September	9.426	11.005	<b>20.431</b>	7.226	10.216	<b>17.442</b>	-14,6%	-24,0%	10,6%
October	10.791	17.416	<b>28.207</b>						
November	9.316	8.965	<b>18.281</b>						
December	7.757	9.677	<b>17.434</b>						
<b>Total</b>	<b>128.948</b>	<b>136.612</b>	<b>265.560</b>	<b>65.557</b>	<b>87.665</b>	<b>153.222</b>			<b>10,4%</b>

## Monthly evolution of railway traffic. Automobile

Monthly evolution of railway traffic	Automobile 2022			Automobile 2023			%		% of total port traffic 2023
	Loaded	Unloaded	Total	Loaded	Unloaded	Total	Monthly	Accumulated	
January	1.359	10.591	<b>11.950</b>	4.150	16.267	<b>20.417</b>	70,9%	70,9%	50,7%
February	2.174	13.813	<b>15.987</b>	5.096	22.553	<b>27.649</b>	72,9%	72,1%	43,1%
March	2.418	18.583	<b>21.001</b>	3.567	23.677	<b>27.244</b>	29,7%	53,9%	42,7%
April	2.670	16.613	<b>19.283</b>	4.515	19.415	<b>23.930</b>	24,1%	45,5%	41,5%
May	2.602	17.588	<b>20.190</b>	5.929	24.358	<b>30.287</b>	50,0%	46,5%	47,7%
June	2.449	17.909	<b>20.358</b>	5.878	27.021	<b>32.899</b>	61,6%	49,3%	49,5%
July	2.309	19.053	<b>21.362</b>	6.807	24.450	<b>31.257</b>	46,3%	48,8%	49,3%
August	2.620	7.962	<b>10.582</b>	1.982	10.394	<b>12.376</b>	17,0%	46,4%	32,2%
September	2.564	20.415	<b>22.979</b>	5.584	18.633	<b>24.217</b>	5,4%	40,7%	52,4%
October	1.750	18.476	<b>20.226</b>						
November	3.947	16.269	<b>20.216</b>						
December	3.619	17.133	<b>20.752</b>						
<b>Total</b>	<b>30.481</b>	<b>194.405</b>	<b>224.886</b>	<b>43.508</b>	<b>186.768</b>	<b>230.276</b>			<b>45,7%</b>

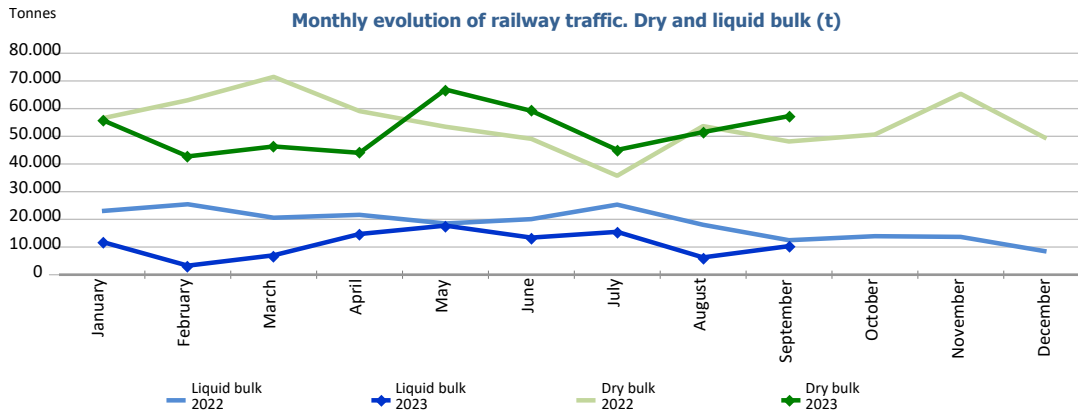




# RAILWAY TRAFFIC

## Monthly evolution of railway traffic. Dry and liquid bulk. Tonnes

Monthly evolution of railway traffic	Tonnes 2022			Tonnes 2023			%	
	Dry bulk	Liquid bulk	Total	Dry bulk	Liquid bulk	Total	Monthly	Accumulated
January	56.474	23.006	<b>79.480</b>	55.964	11.888	<b>67.852</b>	-14,6%	-14,6%
February	63.027	25.451	<b>88.478</b>	42.746	3.263	<b>46.009</b>	-48,0%	-32,2%
March	71.467	20.589	<b>92.056</b>	46.334	7.014	<b>53.348</b>	-42,0%	-35,7%
April	59.099	21.628	<b>80.727</b>	44.027	14.701	<b>58.728</b>	-27,3%	-33,7%
May	53.459	18.505	<b>71.964</b>	66.894	17.738	<b>84.632</b>	17,6%	-24,7%
June	49.089	20.079	<b>69.168</b>	59.200	13.398	<b>72.598</b>	5,0%	-20,5%
July	35.755	25.317	<b>61.072</b>	45.081	15.485	<b>60.566</b>	-0,8%	-18,3%
August	53.685	18.038	<b>71.723</b>	51.511	6.251	<b>57.762</b>	-19,5%	-18,4%
September	48.129	12.463	<b>60.592</b>	57.280	10.320	<b>67.600</b>	11,6%	-15,7%
October	50.628	13.911	<b>64.539</b>					
November	65.362	13.659	<b>79.021</b>					
December	49.199	8.395	<b>57.594</b>					
<b>Total</b>	<b>655.373</b>	<b>221.041</b>	<b>876.414</b>	<b>469.037</b>	<b>100.058</b>	<b>569.095</b>		



## Railway traffic.

Railway gauge traffic (u)	Monthly accumulated		%	% of accumulated total 2023
	2022	2023		
Iberian gauge	6.465	5.274	-18,4%	67,8%
UIC	223	366	64,1%	4,7%
FGC	1.855	2.137	15,2%	27,5%
<b>Total</b>	<b>8.543</b>	<b>7.777</b>	<b>-9,0%</b>	<b>100%</b>

