



PORT INFORMATION

Port of Barcelona has two entrances - North and South - and each one has its own approach channel.

APPROACH CHANNELS

Approach channels consist of two traffic separation schemes guiding ships to/from north and south entrances respectively.

The separation line of the northern approach channel is indicated by a fairway buoy charted name "November - N" and is equipped with a radio beacon signal (racon) that it appears on X-Band radars as letter "N" of the Morse code.

The separation line of the southern approach channel is indicated by a fairway buoy charted name "Sierra - S" and is equipped with a radio beacon signal (racon) that it appears on X-Band radars as the letter "B" of the Morse code.

PRECAUTIONARY AREAS

Two Precautionary Areas have been set between the end of both approach channels and the port entrances.

PORT TRAFFIC

In Barcelona port waters the vessel traffic service (VTS) is provided by 'Barcelona Port Control'.

Inbound Vessels-Reporting Points

One hour prior to arrival at the fairway buoy ships must contact 'Barcelona Traffic' on VHF channel 10 and "Barcelona Port Control" on VHF channel 14.

Two miles before passing the "Sierra" fairway buoy ships must contact "Barcelona Traffic" on VHF channel 10 and "Barcelona Port Control" on VHF channel 14.

Four miles before passing the "November" fairway buoy ships must contact "Barcelona Traffic" on VHF channel 10 and "Barcelona Port Control" on VHF channel 14.

Nevertheless, the High Speed Crafts must report in both cases when they are four miles off the fairway buoy.

Outbound or Shifting Vessels-Reporting Points

One hour before expected departure or shifting, vessels have to contact "Barcelona Port Control" on VHF channel 14.

Twenty minutes before departure or shifting, vessels have to contact "Barcelona Port Control" on VHF channel 14 in order to request port services and/or obtain permission to depart.

Passing fairway buoy must contact "Barcelona Traffic" on VHF channel 10 and "Barcelona Port Control" on VHF channel 14.

Radio Watch

From one hour prior to arrival to two miles away from the "Sierra" fairway buoy or four miles away from "November" fairway buoy and vice versa, ships will maintain a continuous listening watch on VHF channels 10 and 16, and, if possible, VHF channel 14.

From two miles away from the fairway buoy or four miles away from "November" fairway buoy up to be berthed and vice versa, ships will maintain a continuous listening watch on VHF channels 14 and 16, and, if possible, VHF channel 10.

OTHER INFORMATION Emergency

In case of emergency on board, the following stations are on permanent duty 24 hours a day:

"Barcelona Traffic" on VHF channel 10

"Barcelona Port Control" on VHF channel 14

All ships in the port have to follow the instructions given by Port Emergency Plan authorities unless they have overriding contradictory safety reasons which then have to be immediately reported to the authorities.

Ships are requested to inform the aforementioned reporting stations any pollution observed on port waters.

Special Operations

Special operations like launching lifeboats, cleaning, rinsing or painting of the hull, diving operations, main engine immobilisation, hot works and others must be permitted by port authorities. It is recommended applying for permission through agents in advance -at least 48 hours before arriving or 72 hours before arriving if the special operation is expected during weekend or bank holiday -.

Pilotage

Compulsory for vessels over 500 GT. The service is permanent.

Tugs and linesmen

7 private harbour tugs are available (From 45 to 80 tons of bollard pull). If required tug or linesmen assistance they will be requested through Barcelona Port Control. Tug's line used.

Reception Facilities

There are reception facilities for most residues generated from ships.

	MARPOL ANNEX					
	I	II	IV	V	VI	
TRADEBE ECOIMSA 24h: 34 609 301 553	x	x	x		x	
ECOMARPOL 24h: 34 689 985 141				x		
SERV. FLOTANTES OTTO SCHWANDT 24h: 34 607 693 774				x		
TMA Tel. 34 902 454 111	x		x	x	x	

Buoyage

IALA Maritime Buoyage System A.

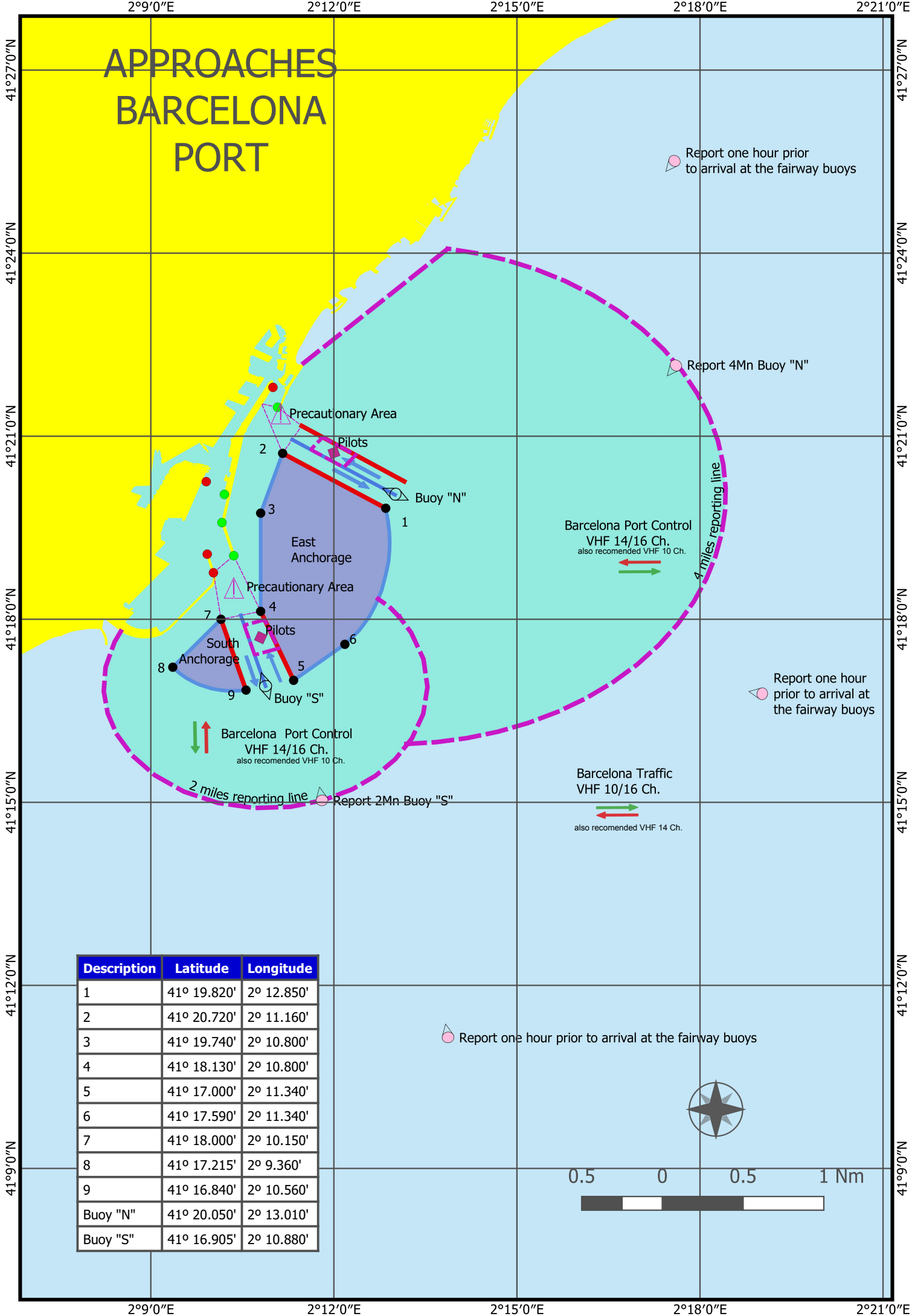
Time

GMT plus 1 hour; GMT plus 2 hours (spring and summer).

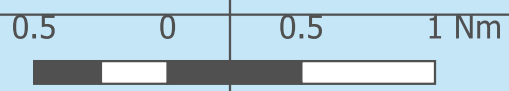
Social Services for Seamen

"Stella Maris": 34 93 443 19 65 (24 hours) Fax 34 93 443 18 43
e-mail: apomar@icab.es

APPROACHES BARCELONA PORT



Description	Latitude	Longitude
1	41° 19.820'	2° 12.850'
2	41° 20.720'	2° 11.160'
3	41° 19.740'	2° 10.800'
4	41° 18.130'	2° 10.800'
5	41° 17.000'	2° 11.340'
6	41° 17.590'	2° 11.340'
7	41° 18.000'	2° 10.150'
8	41° 17.215'	2° 9.360'
9	41° 16.840'	2° 10.560'
Buoy "N"	41° 20.050'	2° 13.010'
Buoy "S"	41° 16.905'	2° 10.880'



Report one hour prior to arrival at the fairway buoys